

Initial central scotomas vs peripheral scotomas in normal-tension glaucoma: clinical characteristics and progression rates

H-k Cho¹, J Lee², M Lee³ and C Kee¹

CLINICAL STUDY

Abstract

Purpose To investigate clinical characteristics and progression rates of the initial central scotomas (ICS) compared with the initial peripheral scotomas (IPS) in normal-tension glaucoma (NTG) patients.

Methods Among NTG patients showing a single hemifield defect and who performed more than five reliable standard visual field (VF) tests, medical records of ICS (involvement of ≥ 3 adjacent points with $P < 5\%$ within the central 12° of fixation and one point with a $P < 0.01$ within the central 6° of fixation) ($n = 32$) or IPS (no VF abnormality within the central 6° of fixation) ($n = 34$) were retrospectively analyzed. The changes of mean thresholds from 10 zones of the glaucoma hemifield test, central 6° and 12° zones, peripheral zones other than central 6° and 12° , and the entire hemifield were inspected. To calculate the progression rates, linear mixed-effect model was employed.

Results There were no significant differences between the two groups in age, gender, ocular factors including baseline/mean treated intraocular pressure, and systemic factors including systolic or diastolic blood pressure/perfusion pressure, mean ocular perfusion pressure (all $P > 0.05$). There were no significant differences in baseline mean deviation and pattern standard deviation ($P > 0.05$) between the two groups, but VF index was significantly lower in ICS group than in IPS group ($P = 0.001$). The progression rates between the two groups were not significantly different in all zones we investigated (all $P > 0.05$).

Conclusions Newly diagnosed cases of NTG with ICS may not differ from those with IPS in clinical characteristics and progression rates under treatment.

Eye (2014) 28, 303–311; doi:10.1038/eye.2013.285; published online 20 December 2013

Keywords: central scotoma; peripheral scotomas; NTG; progression

Introduction

The primary purpose of treatment for glaucoma is to maintain the patient's quality of life through the preservation of vision. From the perspective of quality of life and quality of vision, visual field (VF) defects at or near fixation are more of concern. Patients with VF defects within 5° of fixation are at a greater risk of losing their visual acuity.¹ Central VF defects may cause reading difficulty² and worsen driving performance.³ Therefore, it is important to recognize the progression rates of central VF defects compared with peripheral VF defects in the treatment of glaucoma.

Normal-tension glaucoma (NTG) is a multifactorial disorder with intraocular pressure (IOP) within the statistically normal range.⁴ Although IOP is part of the pathogenic process in NTG,^{5–7} several other factors^{8–13} may contribute to optic nerve damage or may make the nerve more susceptible to damage at lower IOP levels.¹⁴ For instance, it has been proposed that the average blood flow is decreased and that vascular dysregulation may be a risk factor particularly for patients with NTG.^{8–13} VF loss in NTG is reported to be closer to central

¹Department of Ophthalmology, Samsung Medical Center, Sungkyunkwan University School of Medicine, Seoul, Korea

²Department of Ophthalmology, Kong Eye Center, Seoul, Korea

³Department of Ophthalmology, Dankook University School of Medicine, Cheonan, Korea

Correspondence: C Kee, Department of Ophthalmology, Samsung Medical Center, Sungkyunkwan University School of Medicine, 50 Irwon-dong, Gangnam-gu, Seoul 135-710, Korea. Tel: +82 2 3410 3548; Fax: +82 2 3410 0074. E-mail: ckee@skku.edu

Received: 10 April 2013
Accepted in revised form: 11 November 2013
Published online: 20 December 2013

fixation than in the case of high-tension glaucoma.^{15–17} Initial VF defects in NTG can be divided into either central scotomas or peripheral scotomas. On the basis of such findings, different or additional factors may affect the development of these two distinct patterns of VF loss in NTG and may also influence the progression rates.

The purpose of this study was to determine whether we could find the differences in the risk factors and progression rates for initial central scotomas (ICS) and initial peripheral scotomas (IPS) in patients with NTG. We evaluated eyes with either ICS or IPS in a single hemifield and investigated the clinical characteristics and progression rates of these two patterns of VF defects in the early stage of NTG patients.

Materials and methods

Study subjects

Inclusion criteria In a retrospective study involving the medical records of 219 patients who were diagnosed with NTG and had more than five VF tests at the Department of Ophthalmology of the Samsung Medical Center, 66 subjects (66 eyes) were selected for the study based on the inclusion criteria described below. Those who showed initial central or peripheral VF defects in either superior or inferior single hemifield defects were included. Each patient was followed up regularly in the outpatient clinic and had a VF test at least once yearly. A diagnosis of NTG was made when a patient with an IOP of ≤ 21 mm Hg without treatment had findings of glaucomatous optic disc damage and corresponding VF defects, an open angle observed by gonioscopic examination, and no underlying cause for optic disc damage aside from glaucoma. Superotemporal or inferotemporal RNFL defect corresponding to inferior or superior VF defect was identified to make sure only glaucomatous VF defect was included. The central 30-2, SITA-standard strategy program of the Humphrey Field Analyzer (HFA Model640; Humphrey Instruments, Inc., San Leandro, CA, USA) was used for VF testing. A reliable VF fulfilled 3 criteria: fixation loss less than 20%, and false-positive and false-negative rates less than 15%. ICS was defined as the following: (1) involvement of three or more adjacent points with a $P < 0.05$ within the central 12° of fixation; (2) at least one point with a $P < 0.01$ within the central 6° of fixation on the total deviation (TD) plot (Figure 1a). IPS was defined as the following: (1) three or more adjacent points with a $P < 0.05$ outside central 6° of fixation and at least one with $P < 0.01$; (2) no VF abnormality within the central 6° of fixation on the TD plot. (Figure 1b). The definition of a single hemifield defect included the following: (1) three or more adjacent points with a $P < 0.05$ and at least one with a $P < 0.01$ or

lesser on the TD probability map, in the superior or inferior hemifield; (2) no points with a $P < 0.01$ or lesser on the TD probability map of the opposite hemifield; (3) a glaucoma hemifield test (GHT) result that is outside the normal limits. If both eyes met the inclusion criteria, the one with the smaller MD was chosen.

The present study was approved by the Institutional Review Board of Samsung Medical Center, Sungkyunkwan University School of Medicine, Seoul, Korea and followed the tenets of the Declaration of Helsinki.

Exclusion criteria We excluded patients with (1) lens opacities more severe than C2, N2 and P2 according to the lens opacities classification system III criteria,¹⁸ (2) best corrected visual acuity of less than 20/40, (3) spherical equivalent < -6.0 diopters or $> +6.0$ diopters, (4) initial MD of -20 dB or less, for whom glaucoma progression would be difficult to evaluate using a VF test, (5) non-glaucomatous secondary causes affecting the VF (eg, diabetic retinopathy, other diseases of the optic nerve or retina), (6) other intraocular diseases or neurological diseases affecting the VF (eg, pituitary lesions, demyelinating diseases and intracranial abnormalities), or (7) a history of laser treatment or intraocular surgery (except for uncomplicated cataract surgery).

Treatment When NTG was diagnosed, the patients received 5 mg/ml betaxolol (Alcon, Inc, Fort Worth, TX, USA) twice daily. During the follow-up, if glaucoma still progressed or did not reach the target IOP, betaxolol was replaced by 50 μ g/ml latanoprost (Pfizer, Inc., New York, NY, USA). The first target of IOP reduction was to reduce basal IOP by 20%. However, if the first target IOP was not reached, 16 mm Hg was set as the second target IOP. If latanoprost did not have a sufficient effect, 2 mg/ml brimonidine ml (Allergan, Inc., Irvine, CA, USA) was usually added. The treatment strategy and the follow-up interval were identical in all subjects. A Goldmann applanation tonometer (Haag Streit AG, Bern, Switzerland) was used for IOP measurement. The baseline IOP was calculated as the mean IOP before administration of a topical hypotensive agent at each hospital visit. The post-therapeutic IOP was calculated as the mean IOP after administration of a topical hypotensive agent at each hospital visit.

Clinical data The prevalence of systemic factors such as diabetes mellitus, systemic hypertension, migraine, orthostatic hypotension, and peripheral vascular disease was evaluated using the questionnaire obtained at the initial visit of each patient and was analyzed to find the systemic risk factors. Systolic blood pressure (SBP) and diastolic blood pressure (DBP) were measured in each patient. Systolic perfusion pressure (SPP), diastolic

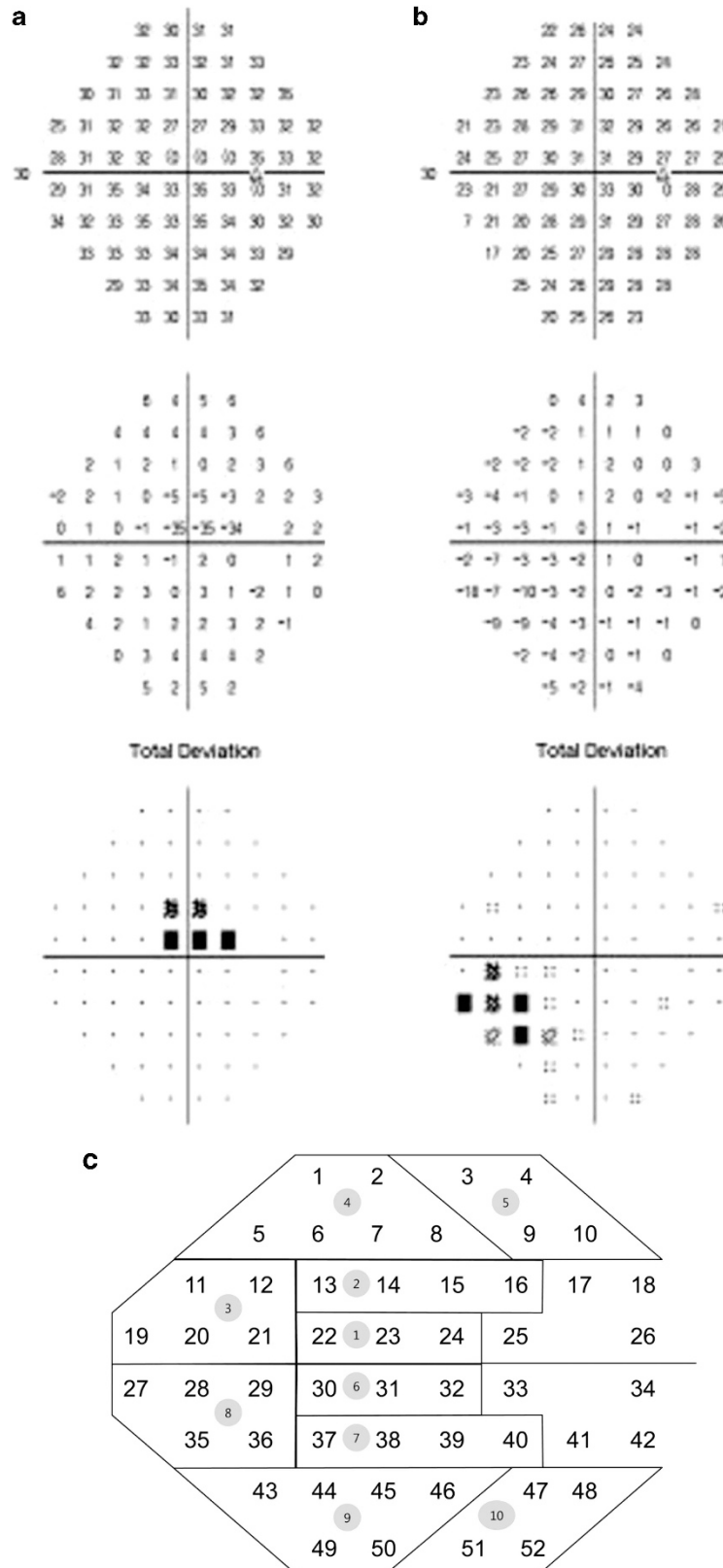


Figure 1 Examples of initial central scotomas (a) and initial peripheral scotomas (b) on the Humphrey 30-2 Swedish interactive threshold algorithm total deviation plot evaluated in the study. Diagram showing the definition of 10 zones of the glaucoma hemifield test and 52 points (c).

perfusion pressure (DPP), and mean ocular perfusion pressure (MOPP) were calculated according to the following formulae using initial IOP: $SPP = SBP - IOP$; $DPP = DBP - IOP$; $MOPP = \text{mean BP} - IOP$; $\text{mean BP} = DBP + (1/3 \times [SBP - DBP])$.

Analysis of VF The mean thresholds of the 10 zones corresponding to those of the GHT (Figure 1c), central 6° zone, central 12° zone, peripheral zone other than the central 6° zone, peripheral zone other than the central 12° zone, and the entire hemifield zone based on glaucoma change probability maps of TD were collected from each follow-up VF test. All follow-up results of the VF tests were compared with an average of two baseline VF tests from the same eye. The changes of mean thresholds from the baseline mean thresholds of each designated zone were analyzed to calculate the progression rate. Initial MD, initial pattern standard deviation (PSD), and initial VF index (VFI) were estimated as the average values from the two baseline VF tests.

Statistical analysis

All clinical characteristics were compared between the ICS group and the IPS group using independent *t* test, χ^2 -test, or Fisher's exact test. $P < 0.05$ was considered significant.

To calculate the progression rate, which is the slope of the mean thresholds of each zone, the linear mixed-effect model with unequal random effect variances was employed. $P < 0.005$ for the slope of 10 zones, $P < 0.0125$ for the slope of central or peripheral zones, and $P < 0.025$ for the slope of the entire hemifield zones were considered to be statistically significant.^{19,20} Only such significant values were selected for the calculation of the mean progression rates. Covariates such as age, gender, initial IOP, initial MD, initial PSD, and initial VFI were controlled. The progression rates of each zone between the ICS group and the IPS group were also compared using the linear mixed-effect model. $P < 0.005$ and 99.5% CI for the 10 zones, $P < 0.0125$ and 98.75% CI for the central or peripheral zones, and $P < 0.025$ and 97.5% CI for the entire hemifield zones were considered to be statistically significant.^{19,20} All statistical analyses were conducted using SAS software version 9.1.3 (SAS, Inc., Cary, NC, USA) and SPSS software version 17.0 (SPSS, Inc., Chicago, IL, USA).

Results

Baseline characteristics

Clinical characteristics Among the 66 eligible patients who met the inclusion criteria, 32 subjects (32 eyes) were

included in the ICS group, and 34 subjects (34 eyes) were included in the IPS group. The mean follow-up period was 7.34 ± 2.29 years overall. Clinical characteristics of the two groups are shown in Table 1. There were no significant differences in the follow-up period, mean age at first visit, gender, and family history of glaucoma between the two groups (all $P > 0.05$). Systemic factors including diabetes mellitus, hypertension, migraine, orthostatic hypotension, and peripheral vascular disease showed no significant difference between the two groups (all $P > 0.05$). Ocular factors including spherical equivalent, central corneal thickness, disc hemorrhage (DH) detection, and presence of β -zone peripapillary atrophy also showed no significant difference between the two groups (all $P > 0.05$). No significant differences were found in baseline IOP and post-therapeutic mean IOP between the two groups (all $P > 0.05$) (Table 1).

There were no significant differences in the therapeutic classes between the two groups. (all $P > 0.05$) (Table 2). Three patients from ICS group and four patients from IPS group underwent uncomplicated cataract surgery.

BP-related parameters are demonstrated in Table 3. There was no significant difference in SBP or DBP between the two groups ($P = 0.510$, $P = 0.088$,

Table 1 Comparison of clinical characteristics of normal-tension glaucoma patients with initial central or peripheral visual field defects

Characteristics (mean \pm SD)	Initial central scotomas (N = 32)	Initial peripheral scotomas (N = 34)	P-value
Follow-up period (yr)	7.19 \pm 2.53	7.47 \pm 2.06	0.626 ^a
<i>Demographic factors</i>			
Age(yrs)	49.87 \pm 11.60	48.50 \pm 14.76	0.677 ^a
Gender, female	18 (56.3%)	19 (55.8%)	0.976 ^b
Family history of glaucoma	2 (6.3%)	3 (8.8%)	1.000 ^c
<i>Systemic factors</i>			
Diabetes mellitus	3	3	1.000 ^c
Hypertension	4	6	0.734 ^b
Migraine	4	3	0.705 ^c
Orthostatic hypotension	4	5	1.000 ^c
Peripheral vascular disease	2	0	0.231 ^c
<i>Ocular factors</i>			
Spherical equivalent(D)	-1.79 \pm 1.78	-1.68 \pm 2.37	0.834 ^a
CCT(um)	526.26 \pm 32.96	529.83 \pm 38.28	0.697 ^a
Disc hemorrhage	6 (18.8%)	7 (20.6%)	0.851 ^b
β -zone PPA	27 (84.4%)	31 (91.2%)	0.469 ^a
Baseline IOP	17.03 \pm 3.21	17.62 \pm 2.87	0.436 ^a
Post-therapeutic mean IOP	14.85 \pm 2.04	15.21 \pm 2.15	0.495 ^a

Abbreviations: CCT, central corneal thickness; D, diopters; IOP, intraocular pressure; m, month; PPA, peripapillary atrophy; SD, standard deviation; VF, visual field; yr, year.

^aIndependent *t*-test.

^b χ^2 -test.

^cFisher exact test.

Table 2 Therapeutic classes at the beginning and the end of the follow-up period and surgeries or laser procedures previous to or during the follow-up period

Treatment modalities	Initial central scotomas (N = 32)	Initial peripheral scotomas (N = 34)	P-value
<i>Therapeutic classes at the beginning of the follow-up period</i>			
Betaxolol	24 (75%)	22 (65%)	0.363 ^a
Brimonidine	0 (0%)	4 (12%)	0.114 ^b
Latanoprost	6 (19%)	8 (23%)	0.635 ^a
Timolol	2 (6%)	0 (0%)	0.231 ^b
<i>Therapeutic classes at the end of the follow-up period</i>			
Betaxolol	15 (47%)	17 (50%)	0.800 ^a
Brimonidine	3 (9%)	3 (9%)	1.000 ^b
Latanoprost	12 (38%)	7 (21%)	0.129 ^a
Betaxolol + latanoprost	1 (3%)	5 (15%)	0.198 ^b
Brimonidine + latanoprost	1 (3%)	2 (5%)	1.000 ^b
<i>Surgical procedures</i>			
Cataract surgery	3 (9%)	4 (12%)	
Filtering surgery	None	None	
Laser procedure	None	None	

^a χ^2 -test.

^b Fisher exact test.

Table 3 Comparison of blood pressure-related and perimetric parameters of normal-tension glaucoma patients with initial central or peripheral visual field defects

Characteristics (mean \pm SD)	Initial central scotomas (N = 32)	Initial peripheral scotomas (N = 34)	P-value
<i>Blood pressure-related parameters</i>			
SBP (mm Hg)	120.78 \pm 13.16	123.21 \pm 16.33	0.510 ^a
DBP (mm Hg)	76.16 \pm 12.05	80.76 \pm 9.44	0.088 ^a
SPP (mm Hg)	103.75 \pm 13.79	105.59 \pm 17.12	0.634 ^a
DPP (mm Hg)	59.13 \pm 12.60	63.15 \pm 10.01	0.155 ^a
MOPP (mm Hg)	91.03 \pm 10.24	94.91 \pm 10.36	0.131 ^a
<i>Perimetric parameters</i>			
Initial MD (dB)	-2.29 \pm 1.67	-2.16 \pm 1.87	0.765 ^a
Initial PSD (dB)	5.74 \pm 3.09	4.62 \pm 2.63	0.117 ^a
Initial VFI (%)	90.74 \pm 6.13	95.37 \pm 4.03	0.001^a
Superior hemifield (%)	26 (81%)	17 (50%)	0.008^b

Abbreviations: DBP, diastolic blood pressure; DPP, diastolic perfusion pressure; MD, mean deviation; MOPP, mean ocular perfusion pressure; PSD, pattern standard deviation; SBP, systolic blood pressure; SD, standard deviation; SPP, systolic perfusion pressure; VF, visual field; VFI, visual field index. Bold letters indicate statistically significant figures.

^a Independent *t*-test.

^b χ^2 -test.

respectively). Calculated SPP and DPP also showed no significant difference between the two groups ($P = 0.510$, $P = 0.088$, respectively). MOPP was 91.03 ± 10.24 in the ICS group and 94.91 ± 10.36 in the IPS group. No significant difference was found in MOPP between the two groups ($P = 0.131$) (Table 3).

Perimetric parameters The mean number of VF tests was 7.52 ± 2.46 in total. Initial MD was -2.29 ± 1.67 in the ICS group and -2.16 ± 1.87 in the IPS group. Initial PSD was 5.74 ± 3.09 in the ICS group and 4.62 ± 2.63 in the IPS group. There was no significant difference in initial MD or initial PSD between the two groups ($P = 0.765$, $P = 0.117$, respectively). Initial VFI was 90.74 ± 6.13 in the ICS group and 95.37 ± 4.03 in the IPS group. Initial VFI in ICS group was significantly lower than that of the IPS group ($P = 0.001$). Involvement of the superior hemifield was 81% (26/32) in the ICS group and 50% (17/34) in the IPS group. Superior hemifield defect was significantly more predominant in the ICS group than in the IPS group ($P = 0.008$) (Table 3).

Progression rates of each zone in ICS group and IPS group

Progression rates were calculated as regression coefficients from the linear mixed-effect model. Progression rates from the 10 zones of the GHT and from the central or peripheral field, and the entire hemifield (according to the initially affected hemifield) are shown in Table 4. There were no significant differences in the progression rates between the two groups in all 10 zones of the GHT ($P = 0.539$, $P = 0.496$, $P = 0.455$, $P = 0.306$, $P = 0.988$, respectively).

There were no significant differences in the progression rates between the two groups in the designated central or peripheral field ($P = 0.151$, $P = 0.908$, $P = 0.845$, $P = 0.767$, respectively). Progression rates from the entire hemifield (according to the initially affected hemifield) in the ICS group and the IPS group were -0.606 dB/year and -0.565 dB/year, respectively. There was also no significant difference in the progression rates from the entire hemifield between the two groups ($P = 0.745$) (Table 4).

Progression rates from all of the zones we investigated showed no significant differences between the ICS group and the IPS group.

Discussion

In the present study, we compared the clinical characteristics including BP-related parameters and progression rates between the ICS group and the IPS group in Korean NTG patients. These two groups had similar initial MD, PSDs and also similar baseline and post-therapeutic mean IOPs, and we followed them for up to 10 years. We intended to determine if there was any difference in clinical characteristics or progression rates between the two groups. Contrary to our expectations, there were no differences in the clinical characteristics

Table 4 Progression rates of investigated zones in normal-tension glaucoma patients with initial central or peripheral visual field defects

Investigated zones	Initial central scotomas (N = 32)	Initial peripheral scotomas (N = 34)	P-value
<i>GHT zones</i>			
Zone 1 or 6	-0.724	-0.611	0.539
Zone 2 or 7	-0.783	-0.939	0.496
Zone 3 or 8	-0.723	-0.581	0.455
Zone 4 or 9	-0.732	-0.566	0.306
Zone 5 or 10	-0.461	-0.458	0.988
<i>Central or peripheral zones</i>			
Central 6° zone	-0.761	-0.437	0.151
Central 12° zone	-0.723	-0.742	0.908
Peripheral zone other than central 6° zone	-0.595	-0.568	0.845
Peripheral zone other than central 12° zone	-0.579	-0.540	0.767
Entire hemifield zone	-0.606	-0.565	0.745

Abbreviation: GHT, glaucoma hemifield test. Linear mixed-effect model with unequal random effect variances. Progression rates were calculated as regression coefficients with the unit of dB/year.

Comparison of progression rates of either superior or inferior zones according to the initially affected hemifield between initial central scotoma group and initial peripheral scotoma group.

between the two groups except for the initial VFI and the occurrence of superior hemifield.

The VFI is the aggregate percentage of visual function for a given field at each point where visual thresholds are estimated. The percentage of visual loss at each point is calculated on the basis of pattern deviations up to -20 dB and TDs beyond -20 dB. Central points have more weight than peripheral points.²¹ Therefore, the ICS group had significantly lower initial VFI than that of the IPS group when the initial MD and PSD were similar between the two groups.

Glaucomatous VF defects are often identified in the upper field, both in primary open-angle glaucoma (POAG) and NTG.²²⁻²⁵ Interestingly, superior VF defects were significantly more identified in the ICS group (81%) than in the IPS group (50%) in our study. These results correspond with a previous study. Park *et al*²⁶ reported that parafoveal scotomas occurred predominantly in the superior hemifield in both NTG (79%) and high pressure glaucoma (87%) subgroups. It seems that glaucomatous central VF defects can be observed more in the superior hemifield than in the inferior hemifield.

It has been reported that, with progression, NTG in the early stage trends toward local depression, particularly in the upper central and upper nasal VFs.²⁷ Ahrlich *et al*²⁸ showed that NTG eyes progress more often in the central VF. Although early stage NTG may progress more often

in the central VF, it is noticeable that the 'rate' of progression, which was the slope of the mean thresholds that also reflected the deepening of the VF defect, was not significantly different between the ICS group and the IPS group in all zones we investigated.

ICS group had scotomas mainly in the central region, and IPS group had scotomas other than the central region in the beginning. During the 7.34 ± 2.29 years of follow-up period, 20/34 (58.8%) patients from the IPS group had involvement of three or more of adjacent points with $P < 5\%$ within the central 12° of fixation at the final VF test. ICS from the ICS group tended to spread toward the peripheral region. Therefore, when we compared the progression rates in both central and peripheral zones (GHT zones, central 6° and 12° zones, peripheral zones other than central 6° and 12°, and the entire hemifield), the rates were not significantly different between the two groups. Our results indicate that the ICS spread out toward the periphery, and the IPS expand toward the center at a similar progression rate.

According to our inclusion criteria, the two groups had some gray zones. Overlapping zone was identified as one or two points near or the outermost central 12° zone (8 points in each hemifield) in five patients from IPS group. However, in those patients, the central 6° zones were cleared and the whole pattern of VF defect was nasal step or arcuate scotomas. We believe it is not unreasonable to apply these inclusion criteria if the purpose is to clinically compare the patients showing mainly central or mainly peripheral VF defects we encounter in practice. Even though there were minor overlapping points between the two groups, we think that it did not entirely affect the rate of progression in 'all' the zones we investigated.

From the perspective of quality of life and quality of vision, VF defects at or near fixation are more of concern. However, our results suggest that the central VF defects do not progress any faster than the peripheral VF defects. This finding may serve as a relief in the treatment of NTG patients involving central VF, especially when they are under proper hypotensive treatment.

Higher frequency of DH detection, systemic hypotension, migraine, and Raynaud's phenomenon or peripheral vascular disease have been reported to be the IOP-independent risk factors for glaucoma, especially for NTG.²⁹⁻³⁸ Park *et al*²⁶ demonstrated that DH was detected more often in the initial parafoveal scotoma group than in initial nasal step group in the subgroup of normal pressure glaucoma. However, in the present study, such findings were not observed. When the frequency of DH is compared with that of previous reports, the follow-up period and interval between visits should be considered.²⁶ Although the mean interval between visits was 4.1-4.9 months in the Park's study, the

follow-up interval was 6 months in our study. There may be a possibility of missed DH detection between visits, which may have affected our results.

Many studies have suggested that impaired autoregulation in ocular blood flow (OBF) may be present in POAG.^{39–44} In NTG, it has been reported that 24-h OPP instability correlates with the severity of glaucomatous VFs at initial presentation.^{32,39} 24-h unstable OPP was also reported to be strongly associated with glaucomatous VF progression in NTG patients.⁴⁰ A previous study showed that systemic hypotension was significantly more prevalent in the initial parafoveal scotoma group than in the initial nasal step group in the subgroup of normal pressure glaucoma.²⁶ Systemic hypotension is considered to be related with impaired OBF. However, in our study, SBP, DBP, SPP, DPP, and MOPP were lower in the ICS group than that of the IPS group, but the differences were not statistically significant. A single measurement of BP was performed at the initial visit, and MOPP was calculated on the basis of the theoretical formula rather than from a direct measurement of OBF. Continuous monitoring of BP or MOPP in a physiologic condition could have led to different results. However, currently there are no available direct methods to measure MOPP in a physiologic condition. Further study and methodology on this matter will be necessary for a proper understanding of the role of ocular perfusion on NTG, especially on central VF defects.

One of the strengths of this study is that it analyzed a cohort of NTG patients who were followed for a relatively long duration of 7.34 ± 2.29 years by a single physician. We directly investigated the rate of progression by measuring changes in the mean thresholds of the designated zones, including the GHT zones, central and peripheral zones, and the entire hemifield, instead of merely using MD indexes which were reported to be insufficient to identify progression in slowly progressing NTG patients.⁴⁵ The subjects in our study had similar baseline MD and PSD between two groups; this strengthens the statistical power of the study for comparison between groups and excludes other possible perimetric index factors that could affect the progression.⁴⁶ The two groups had not only similar initial IOP but also the mean post-treatment IOP. This also excludes the possible influence of IOP to baseline clinical characteristics or progression rates.

Several limitations of the present study should be acknowledged mainly due to its retrospective nature. Inclusion of patients who were followed up for a relatively long period of time could have affected the accuracy of the estimated proportions. The relatively small sample size should also be taken into consideration. A number of patients were excluded from

the analysis because of missing data at the initial visit, including information about systemic factors, and the effect of this selection of patients on our results being not known. However, to compare the clinical characteristics and to calculate the progression, patients with full clinical information and more than five VF tests were required. Also, they had to fulfill the ICS or IPS criteria. Moreover, we cannot rule out the possibility that our results were confounded by other risk factors that we have not evaluated. We evaluated relatively early stage NTG patients (mean MD = -2.22 ± 1.77 dB) with hypotensive treatment. However, this finding regarding progression rates may serve as an important reference to clinicians in the treatment of NTG, which may show more central VF defect, especially in the early stage.^{15–17}

In conclusion, ICS vs IPS may not differ in clinical characteristics, other than VFI and the occurrence of superior hemifield, as well as progression rates in the early stage of NTG patients under treatment. A large, multicenter randomized clinical trial is required to draw more definite conclusions.

Summary

What was known before

- From the perspective of quality of life and quality of vision, visual field defects at or near fixation are more of concern. However, clinical characteristics and progression rates have not yet been well studied between the initial central scotomas and initial peripheral scotomas in normal-tension glaucoma (NTG) patients.

What this study adds

- Initial central scotomas (IPS) versus initial peripheral scotomas (ICS) may not differ in clinical characteristics, other than visual field index and the occurrence of superior hemifield. Progression rates calculated as the changes of mean thresholds in ICS versus IPS were not significantly different in the early stage of NTG patients under treatment. This finding regarding progression rates may serve as an important reference to clinicians in the treatment of NTG, which may show more central VF defect, especially in the early stage.
-

Conflict of interest

The authors declare no conflict of interest.

Acknowledgements

An exemption from informed consent for research was granted because this was a retrospective research study.

Disclaimer

The authors specific contributions to the work described herein are: design of the study (CK); conduct of the study

(HC, JL, ML, CK); data collection and management, analysis and interpretation of the data (HC, JL, ML, CK); preparation, review, and approval of the manuscript (HC, CK). The present study was approved by the Institutional Review Board of Samsung Medical Center, Sungkyunkwan University School of Medicine, Seoul, Korea.

References

- Kolker AE. Visual prognosis in advanced glaucoma: a comparison of medical and surgical therapy for retention of vision in 101 eyes with advanced glaucoma. *Trans Am Ophthalmol Soc* 1977; **75**: 539–555.
- Fujita K, Yasuda N, Oda K, Yuzawa M. [Reading performance in patients with central visual field disturbance due to glaucoma]. *Nihon Ganka Gakkai Zasshi* 2006; **110**: 914–918.
- Coeckelbergh TR, Brouwer WH, Cornelissen FW, Van Wolffelaar P, Kooijman AC. The effect of visual field defects on driving performance: a driving simulator study. *Arch Ophthalmol* 2002; **120**: 1509–1516.
- Levene RZ. Low tension glaucoma: a critical review and new material. *Surv Ophthalmol* 1980; **24**: 621–664.
- Bito LZ. Impact of intraocular pressure on venous outflow from the globe: a hypothesis regarding IOP-dependent vascular damage in normal-tension and hypertensive glaucoma. *J Glaucoma* 1996; **5**: 127–134.
- Schulzer M. Intraocular pressure reduction in normal-tension glaucoma patients. The Normal Tension Glaucoma Study Group. *Ophthalmology* 1992; **99**: 1468–1470.
- Cartwright MJ, Anderson DR. Correlation of asymmetric damage with asymmetric intraocular pressure in normal-tension glaucoma (low-tension glaucoma). *Arch Ophthalmol* 1988; **106**: 898–900.
- Bonomi L, Marchini G, Marraffa M, Bernardi P, Morbio R, Varotto A. Vascular risk factors for primary open angle glaucoma: the Egna-Neumarkt Study. *Ophthalmology* 2000; **107**: 1287–1293.
- Bresson-Dumont H, Bechetoille A. [Role of arterial blood pressure in the development of glaucomatous lesions]. *J Fr Ophtalmol* 1996; **19**: 435–442.
- Cioffi GA, Sullivan P. The effect of chronic ischemia on the primate optic nerve. *Eur J Ophthalmol* 1999; **9**(Suppl 1): S34–S36.
- Flammer J, Orgul S. Optic nerve blood-flow abnormalities in glaucoma. *Prog Retin Eye Res* 1998; **17**: 267–289.
- Flammer J, Orgul S, Costa VP, Orzalesi N, Krieglstein GK, Serra LM et al. The impact of ocular blood flow in glaucoma. *Prog Retin Eye Res* 2002; **21**: 359–393.
- Fuchsjäger-Mayrl G, Wally B, Georgopoulos M, Rainer G, Kircher K, Buehl W et al. Ocular blood flow and systemic blood pressure in patients with primary open-angle glaucoma and ocular hypertension. *Invest Ophthalmol Vis Sci* 2004; **45**: 834–839.
- Collaborative Normal-Tension Glaucoma Study Group. Comparison of glaucomatous progression between untreated patients with normal-tension glaucoma and patients with therapeutically reduced intraocular pressures. *Am J Ophthalmol* 1998; **126**: 487–497.
- Caprioli J, Spaeth GL. Comparison of visual field defects in the low-tension glaucomas with those in the high-tension glaucomas. *Am J Ophthalmol* 1984; **97**: 730–737.
- Chauhan BC, Drance SM, Douglas GR, Johnson CA. Visual field damage in normal-tension and high-tension glaucoma. *Am J Ophthalmol* 1989; **108**: 636–642.
- Thonginnetra O, Greenstein VC, Chu D, Liebmann JM, Ritch R, Hood DC. Normal versus high tension glaucoma: a comparison of functional and structural defects. *J Glaucoma* 2010; **19**: 151–157.
- Chylack Jr, LT, Wolfe JK, Singer DM, Leske MC, Bullimore MA, Bailey IL et al. The Lens Opacities Classification System III. The Longitudinal Study of Cataract Study Group. *Arch Ophthalmol* 1993; **111**: 831–836.
- Smith SD, Katz J, Quigley HA. Analysis of progressive change in automated visual fields in glaucoma. *Invest Ophthalmol Vis Sci* 1996; **37**: 1419–1428.
- Katz J, Gilbert D, Quigley HA, Sommer A. Estimating progression of visual field loss in glaucoma. *Ophthalmology* 1997; **104**: 1017–1025.
- Bengtsson B, Heijl A. A visual field index for calculation of glaucoma rate of progression. *Am J Ophthalmol* 2008; **145**: 343–353.
- Lewis RA, Hayreh SS, Phelps CD. Optic disk and visual field correlations in primary open-angle and low-tension glaucoma. *Am J Ophthalmol* 1983; **96**: 148–152.
- Grave EL, Geijssen C. Comparison of glaucomatous visual field defects in patients with high and low intraocular pressures. In: Greve EL, Heijl A (eds) *Fifth International Visual Field Symposium: Sacramento, October 20-23, 1982*. 5th ed. Kluwer: Boston, MA, USA, 1983, pp 101–105.
- Anderson DR, Hitchings R. A comparative study of visual field of patients with low-tension glaucoma and those with chronic simple glaucoma. In: Greve EL, Heijl A (eds) *Fifth International Visual Field Symposium: Sacramento, October 20-23, 1982*. Kluwer: Boston, MA, USA, 1983, pp 97–99.
- Cantor L. Achieving low target pressures with today's glaucoma medications. *Surv Ophthalmol* 2003; **48**(Suppl 1): S8–16.
- Park SC, De Moraes CG, Teng CC, Tello C, Liebmann JM, Ritch R. Initial parafoveal versus peripheral scotomas in glaucoma: risk factors and visual field characteristics. *Ophthalmology* 2011; **118**: 1782–1789.
- Fukuchi T, Yoshino T, Sawada H, Seki M, Togano T, Tanaka T et al. Progression rate of total, and upper and lower visual field defects in open-angle glaucoma patients. *Clin Ophthalmol* 2010; **4**: 1315–1323.
- Ahrlich KG, De Moraes CG, Teng CC, Prata TS, Tello C, Ritch R et al. Visual field progression differences between normal-tension and exfoliative high-tension glaucoma. *Invest Ophthalmol Vis Sci* 2010; **51**: 1458–1463.
- Hayreh SS, Zimmerman MB, Podhajsky P, Alward WL. Nocturnal arterial hypotension and its role in optic nerve head and ocular ischemic disorders. *Am J Ophthalmol* 1994; **117**: 603–624.
- Demaily P, Cambien F, Plouin PF, Baron P, Chevallerier B. Do patients with low tension glaucoma have particular cardiovascular characteristics? *Ophthalmologica* 1984; **188**: 65–75.
- Graham SL, Drance SM. Nocturnal hypotension: role in glaucoma progression. *Surv Ophthalmol* 1999; **43**(Suppl 1): S10–S16.
- Choi J, Jeong J, Cho HS, Kook MS. Effect of nocturnal blood pressure reduction on circadian fluctuation of mean ocular perfusion pressure: a risk factor for normal tension glaucoma. *Invest Ophthalmol Vis Sci* 2006; **47**: 831–836.

- 33 Corbett JJ, Phelps CD, Eslinger P, Montague PR. The neurologic evaluation of patients with low-tension glaucoma. *Invest Ophthalmol Vis Sci* 1985; **26**: 1101–1104.
- 34 Phelps CD, Corbett JJ. Migraine and low-tension glaucoma. A case-control study. *Invest Ophthalmol Vis Sci* 1985; **26**: 1105–1108.
- 35 Drance S, Anderson DR, Schulzer M. Risk factors for progression of visual field abnormalities in normal-tension glaucoma. *Am J Ophthalmol* 2001; **131**: 699–708.
- 36 Flammer J, Guthauser U, Mahler F. Do ocular vasospasms help cause low-tension glaucoma? *Doc Ophthalmol Proc Ser* 1987; **49**: 397–399
- 37 Drance SM, Douglas GR, Wijsman K, Schulzer M, Britton RJ. Response of blood flow to warm and cold in normal and low-tension glaucoma patients. *Am J Ophthalmol* 1988; **105**: 35–39.
- 38 Broadway DC, Drance SM. Glaucoma and vasospasm. *Br J Ophthalmol* 1998; **82**: 862–870.
- 39 Choi J, Kim KH, Jeong J, Cho HS, Lee CH, Kook MS. Circadian fluctuation of mean ocular perfusion pressure is a consistent risk factor for normal-tension glaucoma. *Invest Ophthalmol Vis Sci* 2007; **48**: 104–111.
- 40 Sung KR, Lee S, Park SB, Choi J, Kim ST, Yun SC *et al*. Twenty-four hour ocular perfusion pressure fluctuation and risk of normal-tension glaucoma progression. *Invest Ophthalmol Vis Sci* 2009; **50**: 5266–5274.
- 41 Sung KR, Cho JW, Lee S, Yun SC, Choi J, Na JH *et al*. Characteristics of visual field progression in medically treated normal-tension glaucoma patients with unstable ocular perfusion pressure. *Invest Ophthalmol Vis Sci* 2011; **52**: 737–743.
- 42 Hafez AS, Bizzarro R, Descovich D, Lesk MR. Correlation between finger blood flow and changes in optic nerve head blood flow following therapeutic intraocular pressure reduction. *J Glaucoma* 2005; **14**: 448–454.
- 43 Tielsch JM, Katz J, Sommer A, Quigley HA, Javitt JC. Hypertension, perfusion pressure, and primary open-angle glaucoma. A population-based assessment. *Arch Ophthalmol* 1995; **113**: 216–221.
- 44 Hafez AS, Bizzarro RL, Rivard M, Lesk MR. Changes in optic nerve head blood flow after therapeutic intraocular pressure reduction in glaucoma patients and ocular hypertensives. *Ophthalmology* 2003; **110**: 201–210.
- 45 Anderson DR, Drance SM, Schulzer M. Natural history of normal-tension glaucoma. *Ophthalmology* 2001; **108**: 247–253.
- 46 Rao HL, Kumar AU, Babu JG, Senthil S, Garudadri CS. Relationship between severity of visual field loss at presentation and rate of visual field progression in glaucoma. *Ophthalmology* 2011; **118**: 249–253.