

Bortezomib enhances cancer cell death by blocking the autophagic flux through stimulating ERK phosphorylation

C Kao^{1,2,8}, A Chao^{1,8}, C-L Tsai¹, W-C Chuang^{1,2}, W-P Huang³, G-C Chen⁴, C-Y Lin¹, T-H Wang^{*,1,2,5,6}, H-S Wang^{1,7} and C-H Lai¹

The antitumor activity of an inhibitor of 26S proteasome bortezomib (Velcade) has been observed in various malignancies, including colon cancer, prostate cancer, breast cancer, and ovarian cancer. Bortezomib has been proposed to stimulate autophagy, but scientific observations did not always support this. Interactions between ERK activity and autophagy are complex and not completely clear. Autophagy proteins have recently been shown to regulate the functions of ERK, and ERK activation has been found to induce autophagy. On the other hand, sustained activation of ERK has also been shown to inhibit the maturation step of the autophagy process. In this study, we sought to identify the mechanism of autophagy regulation in cancer cells treated with bortezomib. Our results indicate that bortezomib blocked the autophagic flux without inhibiting the fusion of the autophagosome and lysosome. In ovarian cancer, as well as endometrial cancer and hepatocellular carcinoma cells, bortezomib inhibited protein degradation in lysosomes by suppressing cathepsins, which requires the participation of ERK phosphorylation, but not JNK or p38. Our findings that ERK phosphorylation reduced cathepsins further explain how ERK phosphorylation inhibits the autophagic flux. In conclusion, bortezomib may induce ERK phosphorylation to suppress cathepsin B and inhibit the catalytic process of autophagy in ovarian cancer and other solid tumors. The inhibition of cisplatin-induced autophagy by bortezomib can enhance chemotherapy efficacy in ovarian cancer. As we also found that bortezomib blocks the autophagic flux in other cancers, the synergistic cytotoxic effect of bortezomib by abolishing chemotherapy-related autophagy may help us develop strategies of combination therapies for multiple cancers.

Cell Death and Disease (2014) 5, e1510; doi:10.1038/cddis.2014.468; published online 6 November 2014

Ovarian cancer leads to the most deaths of all gynecologic cancers.¹ Early diagnosis of ovarian cancer is generally difficult because of the late clinical presentation in its natural history.² Surgery followed by adjuvant chemotherapy is the mainstay of the treatment. Advances in adjuvant chemotherapy such as dose-dense paclitaxel³ and the addition of an angiogenesis inhibitor^{4,5} are increasing the progression-free survival and overall survival. However, even now, complete cures are still rarely accomplished, and current agents for the treatment of recurrent disease have only been modestly effective.² There is an urgent need to investigate drugs with different mechanisms of action in order to develop a better therapeutic strategy in ovarian cancer.

Bortezomib (Velcade, formerly known as PS-341), an inhibitor of the 26S proteasome, is approved for the treatment of multiple myeloma.⁶ Its antitumor activity has also been observed in various malignancies, including colon cancer, prostate cancer, breast cancer, and ovarian cancer.^{7–11} In addition to proteasome inhibition, one of the antimyeloma

mechanisms of bortezomib is the inhibition of transcription factor nuclear factor-kappa beta (NF- κ B).⁶ Blocking the NF- κ B pathway increased the sensitivity of cancer cells to chemotherapy and enhanced their cellular susceptibility to apoptosis.⁶ Recently, bortezomib has been shown to regulate autophagy in breast cancer, melanoma, head and neck cancer, hepatocellular carcinoma, and prostate cancer.^{9,12–17} However, bortezomib-related autophagy regulation has not been reported in ovarian cancer yet.

Autophagy is a conserved process in all eukaryotic cells and contributes to organelle turnover, protein degradation, and differentiation.¹⁸ Autophagy begins with the formation of autophagosomes that selectively engulf organelles and other materials in the cytoplasm. Light chain 3-II (LC3-II) is important in the elongation of double membrane during formation of the autophagosome.¹⁹ The mature autophagosome then fuses with the lysosome, forming the autolysosome. Subsequently, autolysosomal components are degraded by lysosomal catalytic enzymes. Morphologically, initial/immature autophagic

¹Department of Obstetrics and Gynecology, Linkou Medical Center, Chang Gung Memorial Hospital, Taoyuan, Taiwan; ²Graduate Institute of Biomedical Sciences, College of Medicine, Chang Gung University, Taoyuan, Taiwan; ³Department of Life Science, National Taiwan University, Taipei, Taiwan; ⁴Institute of Biological Chemistry, Academia Sinica, Taipei 115, Taiwan; ⁵Genomic Medicine Research Core Laboratory, Linkou Medical Center, Chang Gung Memorial Hospital, Taoyuan, Taiwan; ⁶School of Traditional Chinese Medicine, College of Medicine, Chang Gung University, Taoyuan, Taiwan and ⁷Graduate Institute of Clinical Medical Sciences, College of Medicine, Chang Gung University, Taoyuan, Taiwan

*Corresponding author: T-H Wang, Obstetrics and Gynecology, Linkou Medical Center, Chang Gung Memorial Hospital, No. 5, Fushin St, Taoyuan, Guishan 333, Taiwan. Tel: +886 3 3281200 ext. 5402; Fax: +886 3 3288252; E-mail: knoxtn@cgmh.org.tw

⁸These authors contributed equally to this work.

Abbreviations: ATG, autophagy-related (protein); BTZ, bortezomib; CDDP, cisplatin; CTSB, cathepsin B; ERK, extracellular signal-regulated kinase; LAMP-2, Lysosomal associated membrane protein 2; LC3, light chain 3; LC3-II, cleaved form of LC3; p62/SQSTM1, sequestosome 1/p62

Received 13.7.14; revised 10.9.14; accepted 29.9.14; Edited by GM Fimia

vacuoles (Avi) are cytosolic portions enclosed by double membranes. Upon fusion with endosome, Avi become intermediate, double-membraned, autophagic vacuoles (Avi/d). Upon further fusion with lysosome, these vacuoles become double-membraned, degrading autophagic vacuoles (Avd). Complete degradation results in heterogeneous contents and single membrane structures.^{20–22} P62/sequestosome 1 (p62/SQTM1) is a useful indicator to monitor autophagy, because it decreases when autophagy is completed.²³ P62 accumulates in autophagic-defective tumor cells.¹⁹ In short, p62 degradation is autophagy-dependent.^{24–26}

The role of autophagy in cancer cells is complex and context-dependent.^{26,27} During tumorigenesis, the activation of autophagy suppresses tumor development,²⁸ and down-regulation of autophagy has been shown to promote the aggressiveness of ovarian tumors.²⁹ The autophagy marker LC3 is expressed at lower levels in ovarian cancer tissues than in benign and borderline ovarian tumors, and its expression is lower in advanced stages than in early stages of ovarian cancer.²⁹ On the other hand, the upregulation of autophagy has been shown to increase the survival of clear cell ovarian cancer cells during hypoxic events.³⁰ Chemotherapeutic agents induce cellular and metabolic stress that leads to pro-survival autophagy,³¹ as exemplified by increased autophagy in ovarian cancer cells treated with cisplatin.³² Activation of autophagy is also beneficial to ovarian cancer cells against chemotherapy, and may account for drug resistance.³³

In this study, we sought to identify the role and mechanism of autophagy in cancer cells treated with bortezomib. Our results indicated that bortezomib blocked the autophagic flux at the autophagolysosomal stage by decreasing the levels of cathepsins. More surprisingly, the suppression of cathepsins by bortezomib was mediated by the activation of ERK.

Results

Bortezomib specifically elicited autophagy but blocked the degradation of p62. Treatment with bortezomib increased GFP-LC3 puncta (Figure 1a) and the formation of a double-membraned initial autophagic vacuoles (Avi) and degrading autophagic vacuoles (Avd) (Figure 1b). Although we did not perform quantitatively morphometric analyses of Avi and Avd, we found that the majority of autophagic vacuoles were double-membraned, degrading autophagic vacuoles (Figure 1b). The observation implied that the autophagic flux was blocked at the early stage of autolysosome. The formation of GFP-LC3 puncta increased in a time-dependent manner (Figure 1c), indicating that bortezomib initiated the process of autophagy. Bortezomib also increased the levels of LC3-II in TOV112D (endometrioid type), OV90 (serous type), TOV21G and ES2 (clear cell) ovarian cancer cells in a dose-dependent manner (Figure 1d). ATG5 is involved in the elongation of double membrane in autophagosome, and beclin-1 is required for the initiation of autophagy.¹⁹ Increased levels of ATG5-ATG12 and beclin1 in bortezomib-treated ovarian cancer cells suggested that bortezomib induced the initial steps of autophagy (Supplementary Figure 1).

Ubiquitin-proteasome system and autophagy are two important means of cellular degradation.³⁴ Puncta formation of GFP-

LC3 was detected at 8 h and increased throughout 24 h in bortezomib-treated cells; this was not found in the cells treated with another proteasome inhibitor MG132 at the same concentration (Figure 2a). LC3-II levels were also not increased by MG132 treatment in various types of ovarian cancer cells (Figure 2b). Of note, bortezomib, but not MG132, increased p62 levels in ovarian cancer cells (Figure 2b). P62 is normally degraded by a basal level of autophagy when new protein synthesis is blocked by the treatment with cycloheximide (Figure 2c). However, p62 levels were increased by the co-treatment with cycloheximide and bortezomib, but not by the co-treatment with cycloheximide and MG132 (Figure 2c). These results collectively indicate that the degradation of p62 was specifically inhibited by bortezomib. Although 0.1 μ M of MG132 did not increase autophagosome puncta and LC3-II levels, a much higher concentration (5 μ M) of MG132 did induce autophagosome and LC3-II levels (Supplementary Figure 2).

Bortezomib is a known inhibitor of the NF- κ B signaling pathway, and the activation of NF- κ B was shown to suppress autophagy.³⁵ If this is the case, then bortezomib should activate autophagy and eliminate p62.²³ However, bortezomib inhibited the NF- κ B signaling pathway in seven ovarian cancer lines by increasing I κ B phosphorylation, but also increased p62 levels in eight ovarian cancer cells (Supplementary Figure 3). Inhibition of proteasome by either bortezomib or MG132 was confirmed by the presence of increased levels of ubiquitinated proteins (Supplementary Figure 4). These results suggested that bortezomib suppressed p62 degradation via a NF- κ B-independent, proteasome-independent mechanism.

Bortezomib blocked p62 degradation during autophagy but did not inhibit the fusion of lysosome and autophagosome. Treatment with either chloroquine, an inhibitor that blocks the fusion of lysosome and autophagosome, or bortezomib increased p62 and LC3-II in a time-dependent manner in ovarian cancer cells (Figure 3a). The findings that bortezomib treatment increased p62 levels were also observed in endometrial cancer Ishikawa cells and hepatocellular cancer HepG2 cells (Supplementary Figure 5). To test whether bortezomib inhibited the fusion of lysosome and autophagosome, we used anti-LAMP2 antibody to identify lysosomes and LC3 puncta to indicate autophagosomes. Co-localization of LAMP2 and GFP-LC3 was shown by yellow signals that indicated the co-existence of red (LAMP2) and green (GFP-LC3) signals (Figure 3b). Fusion between autophagosome and lysosome was confirmed in bortezomib-treated cells (Figure 3b).

Lysotracker assays also revealed the co-localization of autophagosome and lysosome, where inhibition of the fusion between autophagosomes and lysosomes by chloroquine was demonstrated by the absence of the Lysotracker signal (Figure 4a). Of note, lysosomal dysfunction was shown by the decreased Lysotracker signals in bortezomib-treated cells (Figure 4a). The GFP-RFP-LC3 expression vector was used to show the flux of autophagy. Rapamycin induces the complete autophagic process, so both yellow (green GFP-LC3 and red RFP-LC3) and red (RFP only) signals were increased, indicating the presence of autophagosomes and autolysosomes, respectively (Figure 4b). Chloroquine inhibits the fusion of autophagosome and lysosome, so only

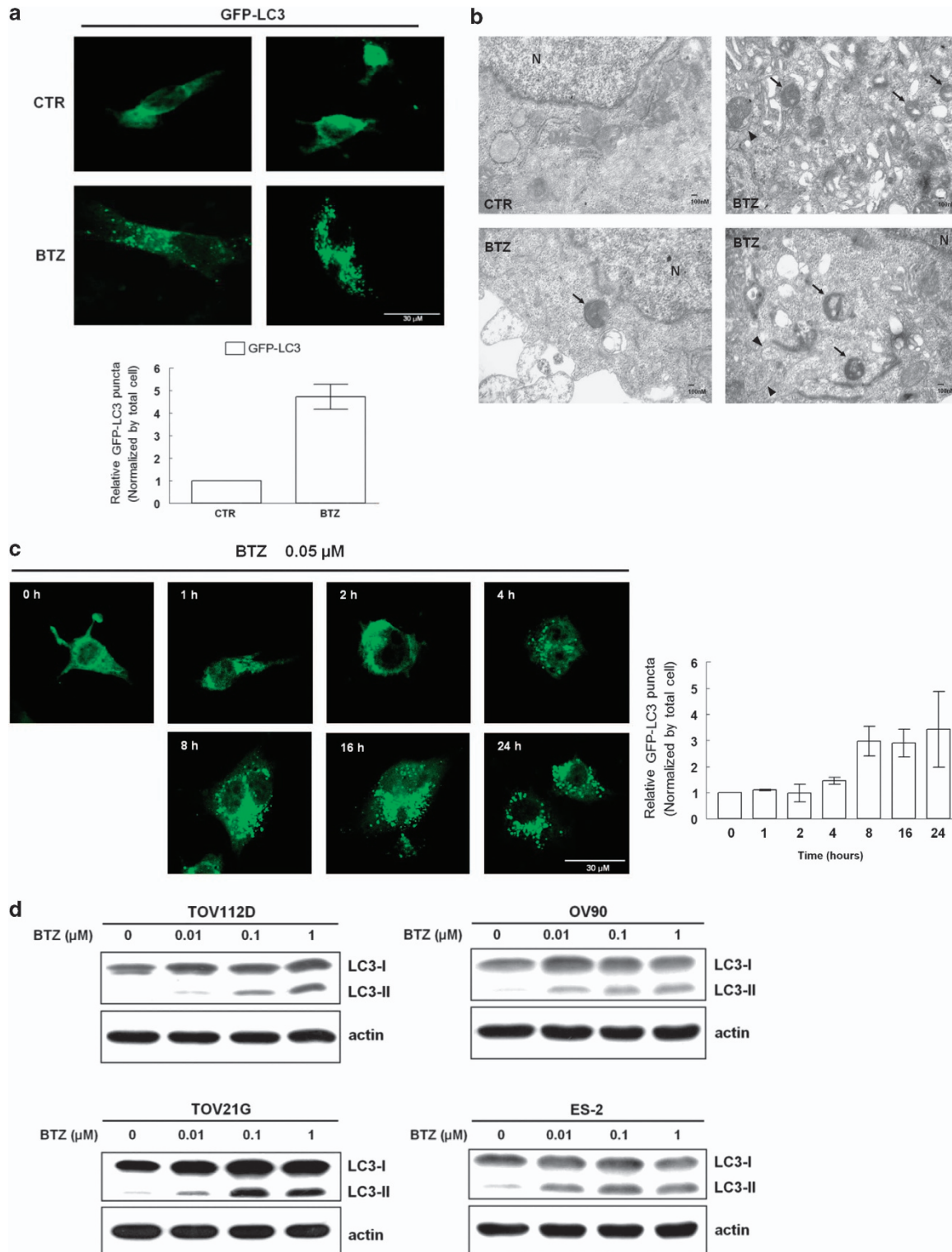


Figure 1 Bortezomib (BTZ) induces autophagy. (a) Immunofluorescent puncta formation in TOV112D cells transfected with GFP-LC3 in the presence or absence of 0.05 μ M BTZ for 24 h. Results shown are mean \pm standard error for three independent experiments. Scale bar represents 30 μ m. (b) Transmission electron microscopy showed that 24 h of BTZ treatment induced the formation of initial autophagic vacuoles (indicated with arrowhead) and degrading autophagic vacuoles (indicated with arrow). Of note, many degrading autophagic vacuoles had double membranes. Scale bar = 100 nm. (c) BTZ induced autophagy in a time-dependent manner. After treatment with 0.05 μ M BTZ for 0, 1, 2, 4, 8, 16, and 24 h, TOV112D cells were analyzed for immunofluorescent GFP-LC3 puncta formation. Results shown are mean \pm standard error for three independent experiments. Scale bar represents 30 μ m. (d) After treatment with designated concentrations of BTZ for 24 h, ovarian cancer cells (TOV112D, TOV21G, OV90, and ES2) were analyzed with western blots for the intensity changes in LC3-I and LC3-II, as indicated. CTR, control

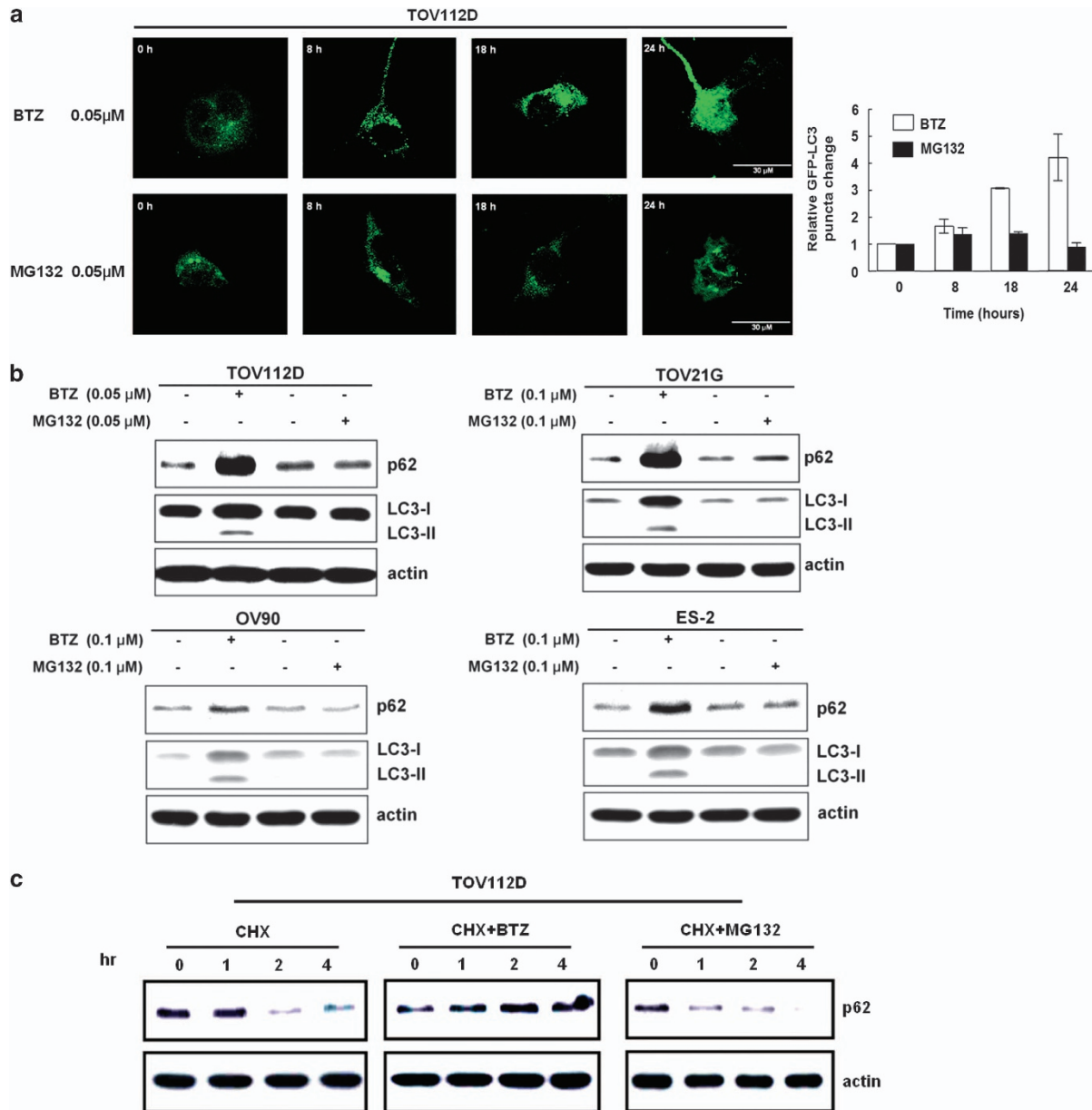


Figure 2 Bortezomib (BTZ) specifically initiates autophagy but blocks the degradation of p62. (a) Left panel: A time-dependent increase of immunofluorescent GFP-LC3 puncta formation was shown in TOV112D cells treated with 0.05 μ M BTZ, but not in those with 0.05 μ M MG132. Scale bar represents 30 μ m. Right panel: The numbers of puncta in every cell were counted and averaged. The fold change of puncta was normalized by the puncta number in the cells at 0 h. Results shown are mean \pm standard error for three independent experiments. (b) Ovarian cancer cell lines (TOV112D, TOV21G, OV90, and ES2) were treated with designated concentrations of BTZ or MG132 for 24 h, and the intensity changes in LC3-II and p62 were analyzed with western blots. (c) TOV112D cells were treated with either 0.05 μ M BTZ or 0.05 μ M MG132 in presence of 100 μ M cycloheximide (CHX) for 1, 2, and 4 h, and the changes in p62 levels were analyzed with western blots

autophagosomes (yellow) predominated in cells treated with both rapamycin and chloroquine (Figure 4b). Using this expression vector, the reduction of acidic lysosomal environment by bortezomib was shown by yellow puncta signal without increasing red puncta (Figure 4b). Taken together, although bortezomib itself does not inhibit the fusion of autophagosome and lysosome, it does impair lysosomal functions in the fused lysosome–autophagosome.

Bortezomib inhibited protein degradation in lysosomes via phosphorylation of ERK, but not JNK or p38.

Cathepsins are important in the autophagic catalytic process.³⁶ In the process to understand how bortezomib suppressed protein degradation in lysosomes, we have found that bortezomib inhibited all levels of cathepsin B/D/G (data not shown). More specifically, the treatment of TOV112D cells with bortezomib suppressed cathepsin B at both the protein and mRNA levels (Figure 5a). Forced expression of cathepsin B significantly supported p62 degradation (Figure 5b), increased signals of Lysotracker (Figure 5f), and rescued bortezomib-treated cells from cell death (Figure 5c). Concomitant with inhibiting cathepsin B and increasing

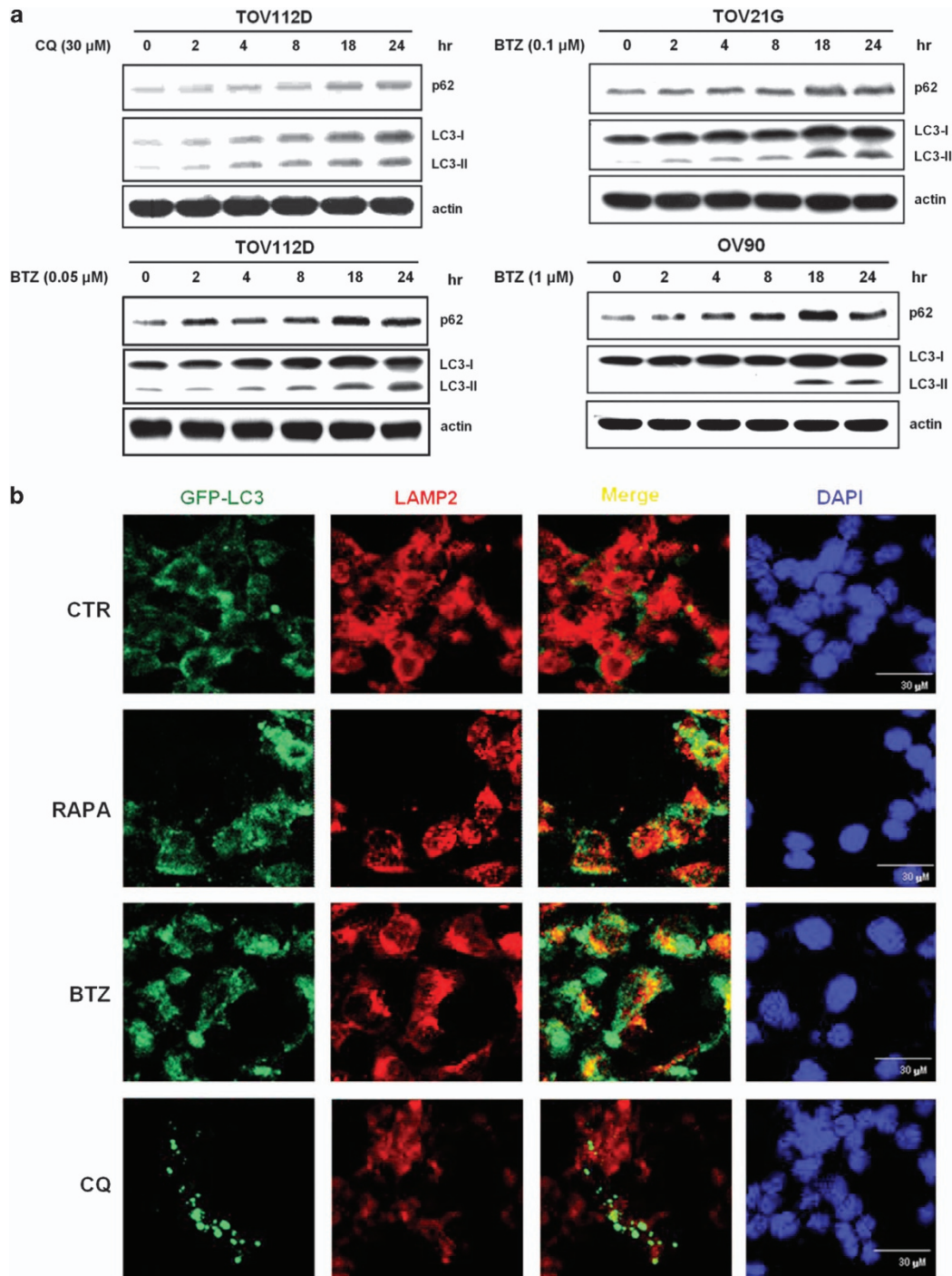


Figure 3 Bortezomib (BTZ) inhibits lysosome functions after the fusion of autophagosome and lysosome. (a) Ovarian cancer cells (TOV112D, TOV21G, and OV90) were treated with designated concentrations of BTZ for designated hours, and the level changes in LC3-I and p62 were analyzed with western blots. Treatment with 30 μ M chloroquine (CQ) in TOV112D cells for the same time periods was used to show the effects of fusion disruption between autophagosome and lysosome. (b) After being transfected with GFP-LC3 for 72 h, TOV112D cells were treated with 0.05 μ M BTZ, 5 μ M rapamycin (RAPA), or 30 μ M chloroquine (CQ) for 24 h, and analyzed for LAMP-2 levels with immunofluorescent microscopy. In the cells treated with rapamycin or BTZ, the merged yellow signals of GFP-LC3 (green) and LAMP-2 (red) indicated the co-localization of autophagosome (marked by GFP-LC3) and lysosome (marked by LAMP-2). Chloroquine blocked the fusion of autophagosome and lysosome, thus minimized yellow signals. Scale bar represents 30 μ m. CTR, control

p62 levels, bortezomib also stimulated ERK phosphorylation in ovarian cancer cells (Figure 5d), endometrial cancer Ishikawa cells, and hepatocellular carcinoma HepG2 cells (Supplementary Figure 5). Treatment with the ERK inhibitor-

PD98059 blocked ERK phosphorylation and rescued cathepsin B levels from suppression by bortezomib, along with significant reduction of p62 (Figure 5d). Forced expression of constitutively active p-ERK (Y204D) significantly inhibited

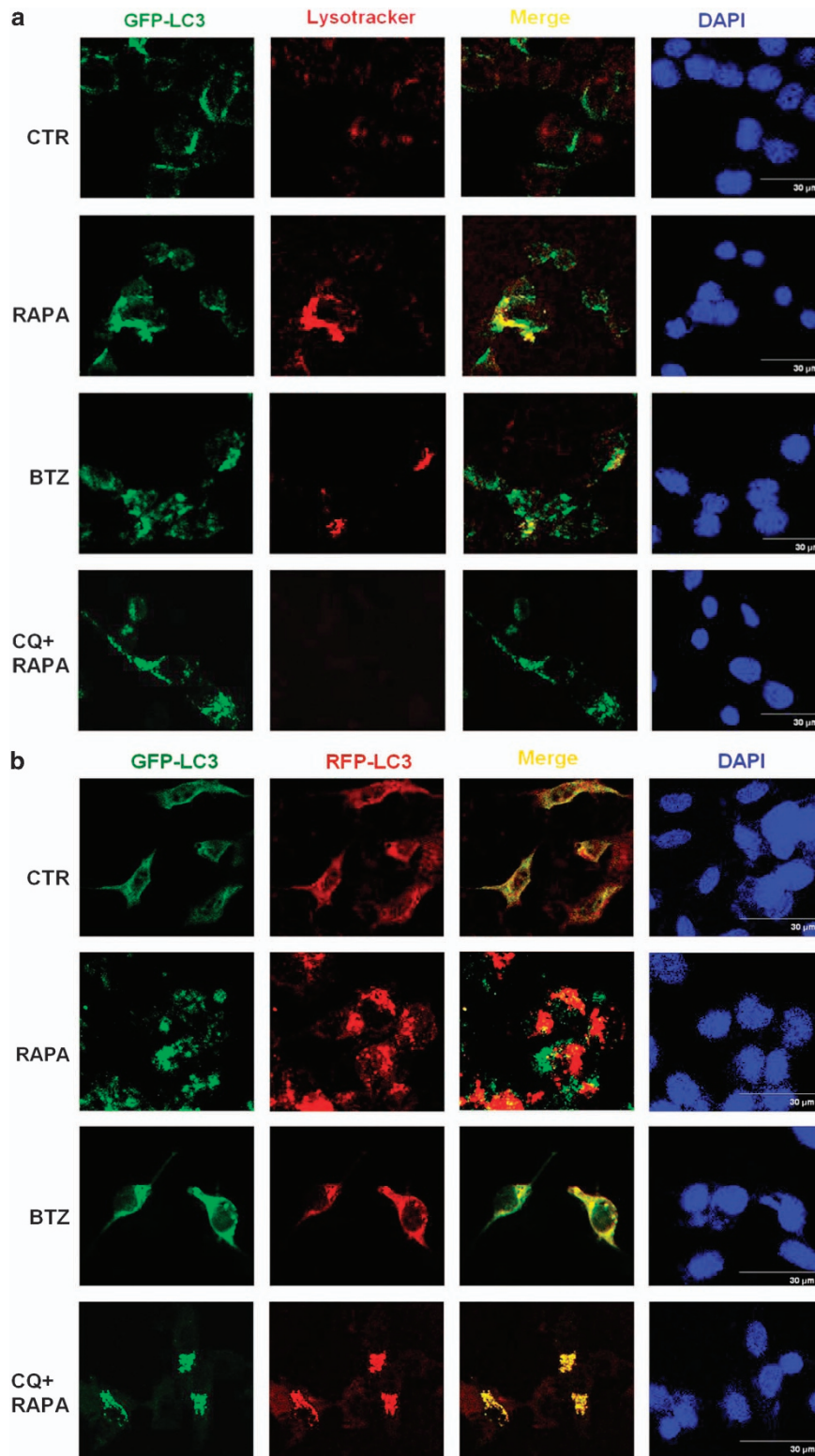


Figure 4 Bortezomib (BTZ) suppresses the catalytic process of autophagy in lysosome. **(a)** TOV112D cells were treated with 0.05 μ M BTZ, 5 μ M rapamycin (RAPA), or 30 μ M CQ for 24 h, and subjected to lysosomal analysis with 300 nM LysoTracker for 16 h. Rapamycin-treated cells were shown as the positive control of autophagy, showing the merged yellow signals of autophagosome (green fluorescence) and functional lysosome (red LysoTracker signals). Even in the cells treated with rapamycin, co-treatment with chloroquine blocked the fusion of autophagosome and lysosome and diminished lysosomal function, shown by the absence of red LysoTracker signal. **(b)** TOV112D cells were transiently transfected with GFP-RFP-LC3 vector for 72 h, and subsequently treated with 0.05 μ M BTZ, 5 μ M rapamycin (RAPA), or 30 μ M CQ for 24 h. Using the GFP-RFP-LC3 expression vector, autophagosomes (GFP) and autolysosomes (RFP) are shown with green and red signals, respectively. Thus, the fluorescence changes can be used as an indicator for the autophagic flux. Scale bar represents 30 μ m. CTR, control

cathepsin B in TOV112D cells (Figure 5e). All of these findings were confirmed in another ovarian cancer TOV21G cells (Supplementary Figure 6). Although bortezomib treatment increased p62 levels in all of eight studied ovarian cancer cell lines, the changes in phospho-ERK and cathepsin B were not consistent in few ovarian cancer cell lines (Supplementary Figure 3), suggesting that additional regulatory mechanisms for cathepsin B exist. In addition, the proteasome inhibitor MG132 at a high concentration (5 μ M) also induced phospho-ERK, but it did not inhibit cathepsin B (Supplementary Figure 7). Therefore, the inhibition of cathepsin B was specific to bortezomib but not to other proteasome inhibitors.

Of note, bortezomib also stimulated JNK phosphorylation but inhibited p38 phosphorylation (Supplementary Figure 8A). However, concomitant treatment with bortezomib and the JNK inhibitor-SP600125 did not rescue cathepsin B levels (Supplementary Figure 8B). In fact, inhibition of JNK further reduced cathepsin B levels (Supplementary Figure 8B). These results indicated that, among three MAPKs, only ERK phosphorylation was responsible for reducing cathepsin B levels.

Bortezomib blocked cisplatin-induced autophagy and enhanced the anticancer effects of cisplatin. Cisplatin chemotherapy has been shown to induce autophagy,³² which is evolved as a self rescuing mechanism by ovarian cancer cells. So we tested whether the bortezomib-blocked catalytic process of autophagy could sensitize the anticancer effect of cisplatin (CDDP). Cisplatin-stimulated autophagy was shown by a time-dependent increase of LC3-II and concomitant decrease of p62 levels (Figure 6a) as well as an increase of GFP-LC3 puncta formation (Figure 6b). Combination of bortezomib and cisplatin increased GFP-LC3 puncta formation and p62 levels in multiple cancer cell lines (Figure 6b and c, and Supplementary Figure 8). Of note, bortezomib attenuated cisplatin-induced cathepsin B/D (Figure 6d). The *in vivo* treatment with both bortezomib and cisplatin inhibited tumor proliferation more effectively than bortezomib alone (Figure 6e). Immunohistochemical analysis of tumors treated with various reagents also provides *in vivo* evidence that bortezomib activated ERK phosphorylation, inhibited cathepsin B, and inhibited p62 degradation (Figure 6f). Cisplatin-induced autophagy was counteracted by the concomitant treatment with bortezomib, shown by decreased cathepsin B (Figure 6) and increased p62 levels (Figure 6 and Supplementary Figure 9). Collectively, these results suggest a novel strategy to reduce autophagy-related, chemotherapeutic resistance and the clinical potential for the combination of bortezomib and cisplatin in the treatment of ovarian cancer (Figure 7).

Discussion

Bortezomib has been proposed to stimulate autophagy,^{12–17,37–39} but contrary findings also exist.^{9,40} Autophagy proteins have been shown to regulate the functions of ERK,⁴¹ whereas all MAPKs, including ERK,⁴² JNK,^{43,44} and p38,³⁸ have been reported to modulate autophagy.^{43,44} On the other hand, sustained activation of ERK was shown to inhibit the maturation step of the autophagy process.⁴⁵ Adding more

surprises to the complexity among bortezomib, ERK activation, and autophagy, this study appears to be the first one revealing that bortezomib blocks the autophagic flux via the phospho-ERK-mediated reduction of cathepsin B.

Even with current methods for detecting autophagosomes and the LC3 conversion from LC3-I to LC3-II, it remains a challenge to accurately measure the flux of autophagy.⁴⁶ Decreasing p62/SQSTM1 levels concomitant with LC3 conversion have been proposed to be useful in monitoring autophagic flux.²³ Therefore, we used the p62 change after bortezomib treatment as a criterion to review the reports in which bortezomib was claimed to stimulate autophagy. The levels of p62 were not shown in six reports.^{12–16,39} In three reports where p62 levels were shown, bortezomib treatment induced p62 degradation in myeloid leukemic cells,³⁷ hepatocellular carcinoma,¹⁷ and lymphoma cells,³⁸ suggesting that bortezomib activates autophagy. However, our findings clearly indicated that bortezomib treatment blocks the autophagic flux in multiple ovarian cancer cell lines, where the numbers of autophagosome and LC3 puncta accumulated and p62 failed to be degraded. Our results are in accordance with the results found with breast cancer cells⁹ and B-Raf-mutated melanoma cells.⁴⁰ We also found that bortezomib treatment resulted in p62 accumulation in hepatocellular carcinoma HepG2 cells and endometrial cancer Ishikawa cells, indicating that autophagic flux was blocked by bortezomib. Taken together, the blockade of autophagic flux appears to be a common effect of bortezomib, at least in solid tumors.

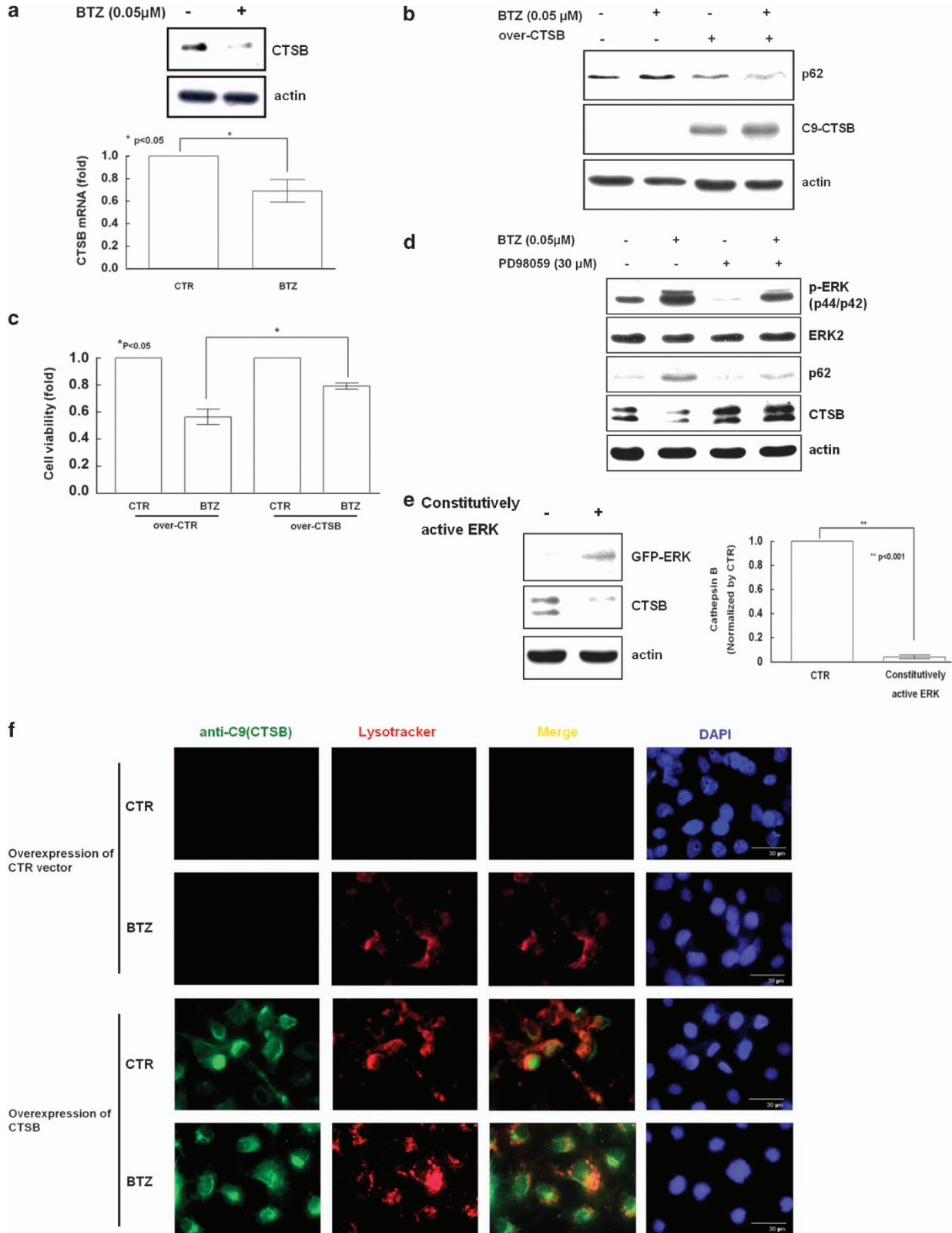
The interactions between ERK activity and autophagy are complex. Autophagy-related protein ATG7 and ATG5 may serve as cellular scaffolds to stimulate ERK phosphorylation.⁴¹ P62/SQSTM1 was also shown to inhibit ERK phosphorylation, and the knockout of p62 was shown to enhance ERK activation *in vivo*.⁴⁷ On the other hand, ERK knockdown has been shown to induce autophagy,⁴⁸ and sustained ERK activation may inhibit the autophagic flux.^{45,49} Our results that bortezomib induced ERK phosphorylation was similar to those reported by Codony-Servat and colleagues.⁵⁰ Our findings that ERK phosphorylation reduced cathepsins further explain how ERK phosphorylation inhibits the autophagic flux.

Cathepsins are lysosomal proteases required for autophagic degradation processes,⁵¹ and they are important for the death, proliferation, and invasion of human cancer cells.³⁶ Cathepsins are overexpressed in many carcinomas and frequently associated with poor clinical prognoses.^{52,53} We found that bortezomib decreased the activity of lysosomal degradation without inhibition of the fusion between autophagosome and lysosome. Our findings were consistent with the report that bortezomib reduces cathepsin activity to block autophagy and decreases cell proliferation.⁹ Our study also provides an additional role of ERK in the inhibition of autophagy. By phosphorylating serine 142, ERK inhibits TFEB that drives the expression of autophagy and lysosomal genes.⁴⁸ Thus, ERK may keep autophagy in check at the transcriptional level. We also found that ERK activation induced by bortezomib can also inhibit the lysosomal stage of autophagy by suppressing cathepsins.

Upon exposure to cytotoxic therapy such as cisplatin, normal and cancer cells activate autophagy to protect

themselves from damage.⁵⁴ Therefore, the combination of chemotherapy with an autophagy-inhibiting mechanism has been proposed to be a viable strategy for cancer therapy.⁴⁶ Although platinum-based chemotherapy is the therapeutic

mainstay of ovarian cancer treatment,³³ increased autophagy was observed in cisplatin-resistant ovarian cancer cells.⁵⁵ Blockade of autophagy with 3-methyladenine has recently been shown to be effective in cisplatin-based chemotherapy



for ovarian cancer cells.⁵⁶ Likewise in our study, the addition of bortezomib blocks cisplatin-activated autophagy, and both drugs synergistically kill cancer cells *in vitro* and *in vivo* (Figure 6). Currently, clinical trials are investigating the use of the combination of bortezomib and cisplatin in the treatment of ovarian cancer.⁵²

In conclusion, the impact of autophagy in different cancers upon anticancer therapy is apparently context-dependent.²⁶ At least in many solid tumors, bortezomib may induce ERK phosphorylation to suppress cathepsin B, and inhibit the catalytic process of autophagy. The inhibition of cisplatin-induced autophagy by bortezomib can enhance chemotherapy efficacy in ovarian cancer. As we also found that bortezomib blocks autophagy in endometrial cancer and hepatocellular cancer, the synergistic cytotoxic effect of bortezomib and cisplatin may be an option as an adjuvant therapy option for multiple cancers.

Materials and Methods

Cell culture and reagents. Human ovarian cancer cell lines TOV112D, TOV21G, OV90, SKOV3, MDAH2774, and ES2 were obtained from ATCC (Rockville, MD, USA). BR and BG1 cells were described previously.¹⁰ Cancer cells were cultured in Dulbecco's modified Eagle's medium/F-12 supplemented with 10% fetal bovine serum and antibiotics at 37 °C with 5% CO₂. Bortezomib (Millennium Pharmaceuticals, Cambridge, MA, USA) was dissolved in medical injectable water at the concentration of 10 mM. Another proteasome inhibitor MG132 (Sigma, St Louis, MO, USA, M7449-200UL) was dissolved in DMSO at 10 mM. Autophagy inhibitor 3-methyladenine (Sigma, M9281-100MG) was dissolved in medical injectable water at 50 mM. Cycloheximide (Sigma, C1988-1G) and chloroquine (Sigma, C6628-25G) were dissolved in medical injectable water at 10 mM. Rapamycin (Sigma, R8781-200UL) was dissolved in DMSO at 10 mM, and PD98059 (Sigma, P215-1MG) was dissolved in DMSO at 100 mM. Cisplatin was available at 0.5 mg/ml (Fresenius Kabi, Raleigh, NC, USA).

Cell viability assay. Cells were treated with designated concentrations of bortezomib and 3-methyladenine in Dulbecco's modified Eagle's medium/F-12 supplemented with 10% fetal bovine serum for 24 h before assay. The growth inhibition effect of bortezomib was measured with MTT (3-(4,5-dimethylthiazol-2-yl)-2,5-diphenyltetrazolium bromide) method (Sigma, M5655-1G). TOV112D cells were plated at 10 000 cells/well in 96-well plates. Working concentration of MTT solution was 1 mg/ml. Optical density was measured using VICTOR2 Scanning multi-well spectrophotometer (Bio Surplus, San Diego, CA, USA) with the absorbance at 570 nm.

Western blot analysis. Cells were lysed in ice-cold RIPA lysis buffer (1% Triton X-100, 1% NP-40, 0.1% SDS, 0.5% DOC, 20 mM Tris-hydroxymethylaminomethane (Tris-HCl, pH 7.4), 150 mM NaCl, protease inhibitors (Sigma), and phosphatase inhibitors (Sigma)) for 30 min. Following electrophoretic separation on a 10% SDS-PAGE gels (LC3 on 13% SDS-PAGE gels), the proteins on the gels were transferred to nitrocellulose membranes (Amersham Pharmacia Biotech, Uppsala, Sweden). Protein samples were analyzed using anti-LC3 (Novus Biologicals, Littleton, CO, USA; NB100-2220), anti-ATG5 (Novus Biologicals, NB110-53818), anti-beclin1 (Epitomics, Cambridge, MA, USA; 2026-1), anti-phospho ERK (Cell Signaling, Danvers, MA, USA; 4376), anti-phospho-JNK (Cell Signaling, 4668), anti-phospho-p38 (Santa Cruz Biotechnology, Dallas, TX, USA;

sc-7973), anti-phospho-cJun (Cell Signaling, 3270), anti-p62 (PROGEN Biotechnik, Heidelberg, Germany; GP62), or anti-cathepsin B (Biovision, Milpitas, CA, USA; 3190-100) as primary antibodies, and corresponding horseradish peroxidase-conjugated secondary antibodies (Santa Cruz Biotechnology, sc-2004, sc2005) or peroxidase-conjugated Affinipure donkey anti-guinea pig IgG (secondary antibody for p62) (Jackson ImmunoResearch Laboratories, West Grove, PA, USA; 706-035-148). Labeled proteins were subsequently detected by enhanced chemiluminescence (ECL, Millipore, Bradford, MA, USA). For each sample, band intensities were normalized to β -actin (Sigma, sc-47778).^{57,58}

RNA interference. For shRNA transfection, 3×10^5 cells were resuspended in 300 μ l of RPMI1640, and cell suspensions were mixed with 30 μ g of shRNA. We used electroporation to transfect shRNA at 100 voltages for 70 mSec with ECM2001 instrument (BTX Instrument Division Harvard Apparatus, Inc., Holliston, MA, USA). The shRNA corresponding to the human cDNA sequence for BECN1 (5-CCCGTGGGAATGGAATGAGATT-3) were purchased from National RNAi Core Facility, Academia Sinica, Taiwan.

DNA transfection. The analyses of sh-BECN1, GFP-LC3 (a gift from Dr. Jennifer Leppincott-Schwartz, National Institutes of Child Health and Human Development, Bethesda, MD, USA), C9-CTSB and GFP-RFP-LC3 (obtained from Addgene Inc., Cambridge, MA, USA), GFP-active ERK (Y205D) were described previously.^{59,60} For transfection experiments, 3×10^6 of TOV112D or TOV21G cells were resuspended in 300 μ l of RPMI1640, and cell suspensions were mixed with 30 μ g of DNA. We used electroporation to transfect shRNA at 100–120 voltages for 70 mSec with the ECM2001 instrument (BTX Instrument Division Harvard Apparatus, Inc., Holliston, MA, USA).

Immunofluorescent microscopy. After transient transfection with GFP-LC3 or GFP-RFP-LC3, cancer cells were cultured on chamber slide at the concentration of 10^3 cells per well overnight. After treatment with bortezomib overnight, cells were fixed with acetone for 5 min and incubated in blocking buffer (5% normal goat serum in PBS) for 1 h at RT to reduce nonspecific binding. For LAMP-2 (Sigma, PRS3627) or cathepsin B (Biovision, 3190-100) staining, cells were incubated with a rabbit polyclonal antibody (1 : 100; Invitrogen, Grand Island, NY, USA; A22283-300L) overnight. After being incubated with Alexa Fluor 546 conjugated anti-rabbit IgG (1 : 100; Invitrogen, A22283-300L), the slides were mounted with mounting medium (SouthernBiotech, Birmingham, AL, USA; 0100-20) and cover glass, and analyzed with the Leica TCS SP2 laser-scanning confocal system (Leica, Wetzlar, Germany) as described previously.⁶¹

Immunohistochemistry. Paraffin-embedded tumor tissue sections (4 μ m) were deparaffinized with xylene and rehydrated through ethanol gradient series. Sections were stained with an anti-p62 antibody (PROGEN Biotechnik) and second anti-guinea pig IgG antibody (Jackson ImmunoResearch Laboratories, 706-035-148) using an immunohistochemistry stainer equipped with a Ventana Basic DAB (3, 30-diaminobenzidine) Detection Kit (Tucson, AZ, USA) according to the manufacturer's protocol. Hematoxylin was used for counterstaining in all specimens as described previously.^{62,63}

Transmission electron microscopy. Cancer cells were plated at 1×10^6 cell/well in 24-well plates and treated with designated concentrations of bortezomib for 24 h. After the cells were washed with PBS twice, they were incubated with fixation buffer (3% glutaraldehyde + 2% paraformaldehyde in 0.1 M cacodylate buffer, pH 7.4) at 4 °C for 2 h. Following the removal of fixation buffer, cells were incubated with 0.1 M cacodylate buffer (pH 7.4) at 4 °C for 10 min. After incubation with designated concentrations (30, 50, 70, 95%) of alcohol for gradual dehydration,

Figure 5 Bortezomib (BTZ) induces the phosphorylation of ERK, reduces the level of cathepsin B (CTSB), and suppresses the catalytic process in autophagic lysosomes. (a) TOV112D cells were treated with 0.05 μ M BTZ for 24 h. CTSB protein and mRNA levels were measured by immunoblotting and real-time quantitative PCR, respectively. Results shown are mean \pm standard error for three independent experiments. (b) The effects of the overexpression of CTSB for 72 h on the TOV112D cells treated with 0.05 μ M BTZ for 24 h were analyzed by measuring the p62 protein level and (c) using the MTT assays. Forced expression of C9-CTSB was detected by anti-C9 antibody with western blot analysis. Results shown are the mean \pm standard error for three independent experiments. (d) The effects induced by the treatment with 0.05 μ M BTZ and 30 μ M PD98059 for 24 h were analyzed in TOV112D cells using immunoblotting for the levels of ERK phosphorylation, CTSB, and p62. (e) The effect of forced expression of a constitutively active p-ERK (Y204D) for 72 h in TOV112D cells were analyzed by measuring the level of CTSB. Results shown are mean \pm standard error for three independent experiments. (f) TOV112D cells were transfected with a C9-CTSB expression vector and treated with 0.05 μ M BTZ. After lysosomal labeling with 300 nM LysoTracker (red) for 16 h, the colocalization of CTSB and functional lysosomes was shown by yellow merged signals of anti-C9 (green) into LysoTracker (red). Scale bar represents 30 μ m

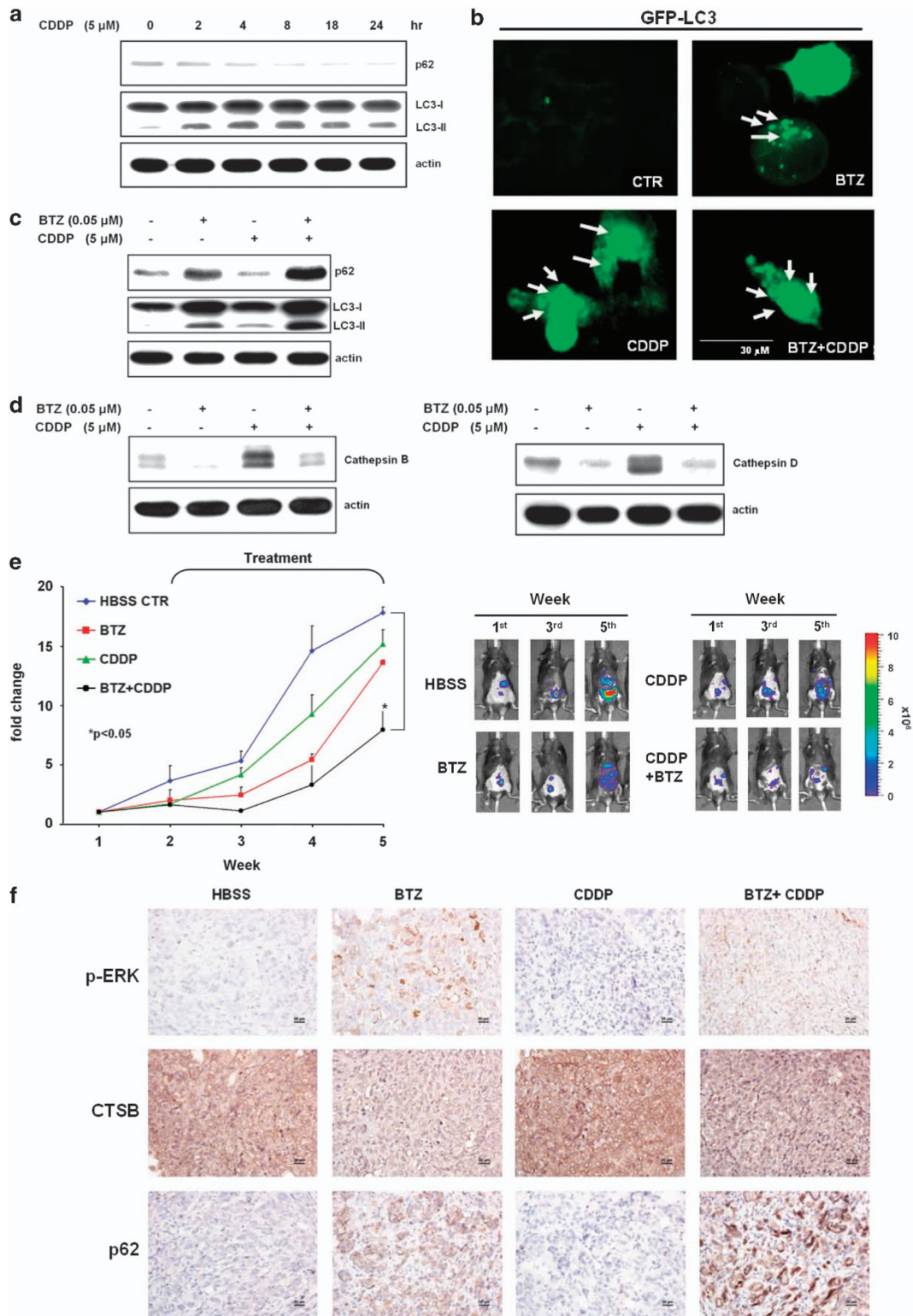


Figure 6 Bortezomib (BTZ) blocks cisplatin (CDDP)-induced autophagy and enhances cytotoxicity in mice. (a) Treatment with 5 μ M CDDP caused a time-dependent autophagy of TOV112D, shown by increasing levels of LC3-II and decreasing levels of p62. (b) Puncta formation (arrow) in TOV112D cells treated with 0.05 μ M BTZ, 5 μ M CDDP, or the combination of both for 24 h. Scale bar represents 30 μ m. (c) Treatment with 0.05 μ M BTZ inhibited CDDP-induced autophagy, shown by the increased level of p62 and LC3-I. (d) CDDP-induced autophagy was characterized with increased levels of cathepsin B, which was inhibited by the co-treatment with BTZ. (e) Ten millions of MOSEC/LUC cells were intraperitoneally injected into C57BL/6 mice. Subsequently, the mice were intraperitoneally injected with 100 μ L HBSS (vehicle alone), 20 μ g/mL BTZ per mouse, 100 μ L CDDP (80 μ M) per mouse, or both twice a week. The mice were then analyzed with the IVIS 200 *in vivo* imaging system on a weekly basis. (f) Protein levels of p-ERK, cathepsin B (CTSB), and p62 from representative tumors from the aforementioned studied mice were analyzed with immunohistochemistry. Protein levels were shown as different intensities of brown color. Cell nuclei were counterstained with hematoxylin. Scale bar represents 20 μ m. CTR, control

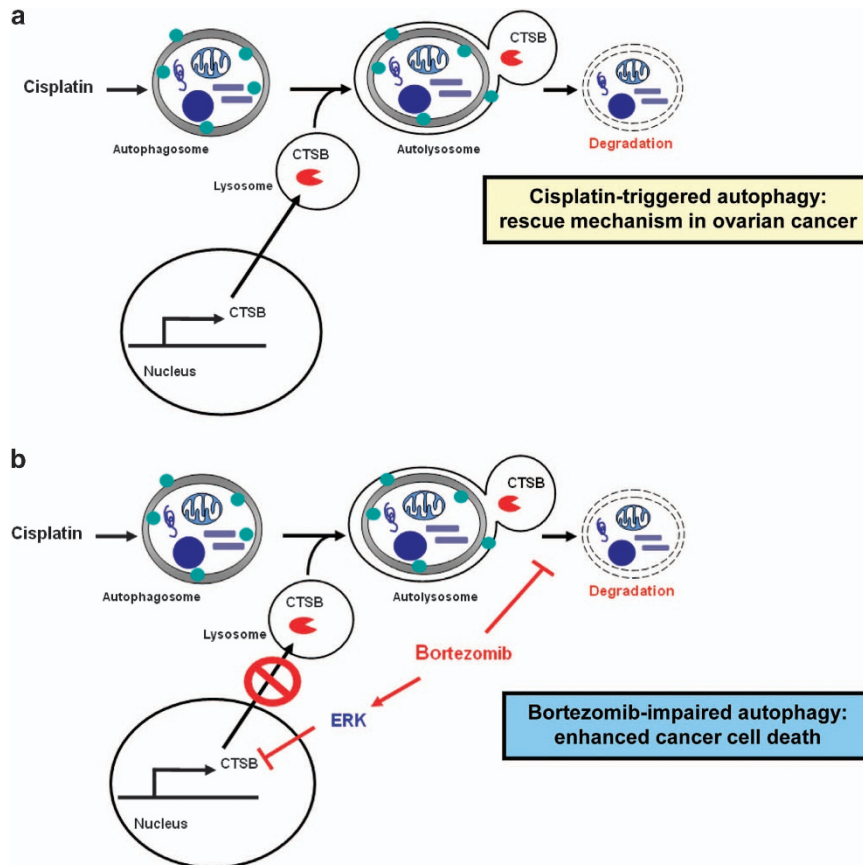


Figure 7 ERK phosphorylation induced by bortezomib inhibits the catalytic process of autophagy and enhances cisplatin-induced cytotoxicity of cancer cells. (a) Upon the treatment with cisplatin, cancer cells often use autophagy as a form of self-rescue. Increased levels of cathepsin B (CTSB) are required to complete the catabolic process of autophagy. (b) Treatment with bortezomib induces phosphorylation of ERK, which decreases CTSB levels and blocks the catabolic process of autophagy. By adding bortezomib to cisplatin-based chemotherapy, self-rescuing autophagy of cancer cells is suppressed, resulting in an enhanced anticancer efficacy

the cells were incubated with alcohol: Epon = 1 : 1 buffer for 7 h for infiltration, and incubated with 100% Epon for embedding. Cells were stained with 4% uranyl acetate for 2 h and citrate for 10 min. Images were captured with TEM (H-7500, Hitachi Co. Ltd., Tokyo, Japan).

Tumor growth monitoring using an *in vivo* imaging system. One million of mouse ovarian surface epithelial cancer cells (MOSEC/LUC), which constitutively expressed luciferase, in 100 μ l of Hank's balanced salt solution were intraperitoneally injected to each C57BL/6 mouse using a 23-gauge needle (Becton Dickson, Franklin Lakes, NJ, USA). After 2–4 days, mice were injected with luciferin intraperitoneally (100 μ l of 0.4 mg/ml luciferin; Goldbio, St. Louis, MO, USA; luck-1) for 10 min, and tumor growth was monitored by luciferase activity detected with the Xenogen IVIS 200 *In Vivo* Imaging System (Xenogen Corp., Alameda, CA, USA). All mice were sedated with isoflurane before the imaging. Light outputs were quantified using the LivingImage software (Xenogen Corp.), as previously described.¹⁰

Statistical analyses. Statistical analysis was performed using SPSS statistical software, version 17.0 (SPSS Inc., Chicago, IL, USA). Differences between results were analyzed using the Mann-Whitney U-test. All values were expressed as mean \pm standard error which was calculated from three independent experiments unless indicated otherwise. *P*-value less than 0.05 were considered statistically significant.

Conflict of Interest

The authors declare no conflict of interest.

Acknowledgements. This work was supported by the grants: MOHW102-TD-PB-111-NSC106 (to T.H. Wang), NSC100-2314-B182-016 MY3 (to TH Wang), CMRPG391461 ~ 4 (to T.H. Wang), and CMRPG3C0281 ~ 3 (to TH Wang). We are grateful for the help from Microscope Core Laboratory, CGMH, and Molecular Imaging Center, CGMH, and English editing by Dr. Shihyee Mimi Wang (Department of Obstetrics and Gynecology, White Memorial Hospital, Los Angeles).

1. Siegel R, Naishadham D, Jemal A. Cancer statistics, 2013. *CA Cancer J Clin* 2013; **63**: 11–30.
2. Coleman RL, Monk BJ, Sood AK, Herzog TJ. Latest research and treatment of advanced-stage epithelial ovarian cancer. *Nat Rev Clin Oncol* 2013; **10**: 211–224.
3. Katsumata N, Yasuda M, Takahashi F, Isonishi S, Jobo T, Aoki D et al. Dose-dense paclitaxel once a week in combination with carboplatin every 3 weeks for advanced ovarian cancer: a phase 3, open-label, randomised controlled trial. *Lancet* 2009; **374**: 1331–1338.
4. Burger RA, Brady MF, Bookman MA, Fleming GF, Monk BJ, Huang H et al. Incorporation of bevacizumab in the primary treatment of ovarian cancer. *N Engl J Med* 2011; **365**: 2473–2483.
5. Perren TJ, Swart AM, Pfisterer J, Ledermann JA, Pujade-Lauraine E, Kristensen G et al. A phase 3 trial of bevacizumab in ovarian cancer. *N Engl J Med* 2011; **365**: 2484–2496.
6. Richardson PG, Anderson KC. Bortezomib: a novel therapy approved for multiple myeloma. *Clin Adv Hematol Oncol* 2003; **1**: 596–600.
7. Cusack JC Jr., Liu R, Houston M, Abendroth K, Elliott PJ, Adams J et al. Enhanced chemosensitivity to CPT-11 with proteasome inhibitor PS-341: implications for systemic nuclear factor-kappaB inhibition. *Cancer Res* 2001; **61**: 3535–3540.
8. Befani CD, Vlachostergios PJ, Hatzidaki E, Patrikidou A, Bonanou S, Simos G et al. Bortezomib represses HIF-1 α protein expression and nuclear accumulation by inhibiting both PI3K/Akt/TOR and MAPK pathways in prostate cancer cells. *J Mol Med (Berl)* 2012; **90**: 45–54.
9. Periyasamy-Thandavan S, Jackson WH, Samadder JS, Erickson B, Barrett JR, Raney L et al. Bortezomib blocks the catabolic process of autophagy via a cathepsin-dependent mechanism, affects endoplasmic reticulum stress and induces caspase-dependent cell death in antiestrogen-sensitive and resistant ER+ breast cancer cells. *Autophagy* 2010; **6**: 19–35.

10. Kao C, Chao A, Tsai CL, Lin CY, Chuang WC, Chen HW *et al*. Phosphorylation of signal transducer and activator of transcription 1 reduces bortezomib-mediated apoptosis in cancer cells. *Cell Death Dis* 2013; **4**: e512.
11. Chen KF, Liu CY, Lin YC, Yu HC, Liu TH, Hou DR *et al*. CIP2A mediates effects of bortezomib on phospho-Akt and apoptosis in hepatocellular carcinoma cells. *Oncogene* 2010; **29**: 6257–6266.
12. Selimovic D, Porzig BB, El-Khattouti A, Badura HE, Ahmad M, Ghanjati F *et al*. Bortezomib/proteasome inhibitor triggers both apoptosis and autophagy-dependent pathways in melanoma cells. *Cell Signal* 2013; **25**: 308–318.
13. Yu HC, Hou DR, Liu CY, Lin CS, Shiau CW, Cheng AL *et al*. Cancerous inhibitor of protein phosphatase 2A mediates bortezomib-induced autophagy in hepatocellular carcinoma independent of proteasome. *PLoS One* 2013; **8**: e55705.
14. Zhu K, Dunner K Jr., McConkey DJ. Proteasome inhibitors activate autophagy as a cytoprotective response in human prostate cancer cells. *Oncogene* 2010; **29**: 451–462.
15. Milani M, Rzymiski T, Mellor HR, Pike L, Bottini A, Generali D *et al*. The role of ATF4 stabilization and autophagy in resistance of breast cancer cells treated with Bortezomib. *Cancer Res* 2009; **69**: 4415–4423.
16. Li C, Johnson DE. Bortezomib induces autophagy in head and neck squamous cell carcinoma cells via JNK activation. *Cancer Lett* 2012; **314**: 102–107.
17. Hui B, Shi YH, Ding ZB, Zhou J, Gu CY, Peng YF *et al*. Proteasome inhibitor interacts synergistically with autophagy inhibitor to suppress proliferation and induce apoptosis in hepatocellular carcinoma. *Cancer* 2012; **118**: 5560–5571.
18. Zhang Y, Morgan MJ, Chen K, Choksi S, Liu ZG. Induction of autophagy is essential for monocyte-macrophage differentiation. *Blood* 2012; **119**: 2895–2905.
19. Mizushima N, Levine B. Autophagy in mammalian development and differentiation. *Nat Cell Biol* 2010; **12**: 823–830.
20. Eskelinen EL. Doctor Jekyll and Mister Hyde: autophagy can promote both cell survival and cell death. *Cell Death Differ* 2005; **12**: 1468–1472.
21. Mizushima N. Autophagy: process and function. *Genes Dev* 2007; **21**: 2861–2873.
22. Mizushima N, Ohsumi Y, Yoshimori T. Autophagosome formation in mammalian cells. *Cell Struct Funct* 2002; **27**: 421–429.
23. Mizushima N, Yoshimori T. How to interpret LC3 immunoblotting. *Autophagy* 2007; **3**: 542–545.
24. Kraft C, Peter M, Hofmann K. Selective autophagy: ubiquitin-mediated recognition and beyond. *Nat Cell Biol* 2010; **12**: 836–841.
25. Pankiv S, Clausen TH, Lamark T, Brech A, Bruun JA, Outzen H *et al*. p62/SQSTM1 binds directly to Atg8/LC3 to facilitate degradation of ubiquitinated protein aggregates by autophagy. *J Biol Chem* 2007; **282**: 24131–24145.
26. White E. Deconvoluting the context-dependent role for autophagy in cancer. *Nat Rev Cancer* 2012; **12**: 401–410.
27. Long JS, Ryan KM. New frontiers in promoting tumour cell death: targeting apoptosis, necroptosis and autophagy. *Oncogene* 2012; **31**: 5045–5060.
28. Mathew R, Karp CM, Beaudoin B, Vuong N, Chen G, Chen HY *et al*. Autophagy suppresses tumorigenesis through elimination of p62. *Cell* 2009; **137**: 1062–1075.
29. Shen Y, Li DD, Wang LL, Deng R, Zhu XF. Decreased expression of autophagy-related proteins in malignant epithelial ovarian cancer. *Autophagy* 2008; **4**: 1067–1068.
30. Spowart JE, Townsend KN, Huwait H, Eshragh S, West NR, Ries JN *et al*. The autophagy protein LC3A correlates with hypoxia and is a prognostic marker of patient survival in clear cell ovarian cancer. *J Pathol* 2012; **228**: 437–447.
31. Dalby KN, Tekedereli I, Lopez-Berestein G, Ozpolat B. Targeting the prodeath and prosurvival functions of autophagy as novel therapeutic strategies in cancer. *Autophagy* 2010; **6**: 322–329.
32. Zhang Y, Cheng Y, Ren X, Zhang L, Yap KL, Wu H *et al*. NAC1 modulates sensitivity of ovarian cancer cells to cisplatin by altering the HMGB1-mediated autophagic response. *Oncogene* 2012; **31**: 1055–1064.
33. Bast RC Jr. Molecular approaches to personalizing management of ovarian cancer. *Ann Oncol* 2011; **22**: viii5–viii15.
34. Rubinsztein DC. The roles of intracellular protein-degradation pathways in neurodegeneration. *Nature* 2006; **443**: 780–786.
35. Djavaheri-Mergny M, Amelotti M, Mathieu J, Besancon F, Bauvy C, Souquere S *et al*. NF-kappaB activation represses tumor necrosis factor-alpha-induced autophagy. *J Biol Chem* 2006; **281**: 30373–30382.
36. Mohamed MM, Sloane BF. Cysteine cathepsins: multifunctional enzymes in cancer. *Nat Rev Cancer* 2006; **6**: 764–775.
37. Fang J, Rhyasen G, Bolanos L, Rasch C, Varney M, Wunderlich M *et al*. Cytotoxic effects of bortezomib in myelodysplastic syndrome/acute myeloid leukemia depend on autophagy-mediated lysosomal degradation of TRAF6 and repression of PSMA1. *Blood* 2012; **120**: 858–867.
38. Granato M, Santarelli R, Lotti LV, Di Renzo L, Gonnella R, Garufi A *et al*. JNK and macroautophagy activation by bortezomib has a pro-survival effect in primary effusion lymphoma cells. *PLoS One* 2013; **8**: e75965.
39. Kim SY, Song X, Zhang L, Bartlett DL, Lee YJ. Role of Bcl-xL/Bcl-1 in interplay between apoptosis and autophagy in oxaliplatin and bortezomib-induced cell death. *Biochem Pharmacol* 2014; **88**: 178–188.
40. Armstrong JL, Corazzari M, Martin S, Pagliarini V, Falasca L, Hill DS *et al*. Oncogenic B-RAF signaling in melanoma impairs the therapeutic advantage of autophagy inhibition. *Clin Cancer Res* 2011; **17**: 2216–2226.
41. Martinez-Lopez N, Athonvarangkul D, Mishall P, Sahu S, Singh R. Autophagy proteins regulate ERK phosphorylation. *Nat Commun* 2013; **4**: 2799.
42. Pattinre S, Bauvy C, Codogno P. Amino acids interfere with the ERK1/2-dependent control of macroautophagy by controlling the activation of Raf-1 in human colon cancer HT-29 cells. *J Biol Chem* 2003; **278**: 16667–16674.
43. He W, Wang Q, Srinivasan B, Xu J, Padilla MT, Li Z *et al*. A JNK-mediated autophagy pathway that triggers c-IAP degradation and necroptosis for anticancer chemotherapy. *Oncogene* 2014; **33**: 3004–3013.
44. de la Cruz-Morcillo MA, Valero ML, Callejas-Valera JL, Arias-Gonzalez L, Melgar-Rojas P, Galan-Moya EM *et al*. p38MAPK is a major determinant of the balance between apoptosis and autophagy triggered by 5-fluorouracil: implication in resistance. *Oncogene* 2012; **31**: 1073–1085.
45. Corcelle E, Djerbi N, Mari M, Nebout M, Fiorini C, Fenichel P *et al*. Control of the autophagy maturation step by the MAPK ERK and p38: lessons from environmental carcinogens. *Autophagy* 2007; **3**: 57–59.
46. White E. Q&A: Eileen White on understanding autophagy. *Cancer Discov* 2012; **2**: 863.
47. Rodriguez A, Duran A, Selloum M, Champy MF, Diez-Guerra FJ, Flores JM *et al*. Mature-onset obesity and insulin resistance in mice deficient in the signaling adapter p62. *Cell Metab* 2006; **3**: 211–222.
48. Settembre C, Di Malta C, Polito VA, Garcia Arencibia M, Vetrini F, Erdin S *et al*. TFEB links autophagy to lysosomal biogenesis. *Science* 2011; **332**: 1429–1433.
49. Corcelle E, Nebout M, Bekri S, Gauthier N, Hofman P, Poujeol P *et al*. Disruption of autophagy at the maturation step by the carcinogen lindane is associated with the sustained mitogen-activated protein kinase/extracellular signal-regulated kinase activity. *Cancer Res* 2006; **66**: 6861–6870.
50. Codony-Servat J, Tapia MA, Bosch M, Oliva C, Domingo-Domenech J, Mellado B *et al*. Differential cellular and molecular effects of bortezomib, a proteasome inhibitor, in human breast cancer cells. *Mol Cancer Ther* 2006; **5**: 665–675.
51. Reiser J, Adair B, Reinheckel T. Specialized roles for cysteine cathepsins in health and disease. *J Clin Invest* 2010; **120**: 3421–3431.
52. Bengsch F, Buck A, Gunther SC, Seiz JR, Tacke M, Pfeifer D *et al*. Cell type-dependent pathogenic functions of overexpressed human cathepsin B in murine breast cancer progression. *Oncogene* 2013; **33**: 4474–4484.
53. Beckham TH, Lu P, Cheng JC, Zhao D, Turner LS, Zhang X *et al*. Acid ceramidase-mediated production of sphingosine 1-phosphate promotes prostate cancer invasion through upregulation of cathepsin B. *Int J Cancer* 2012; **131**: 2034–2043.
54. Kaushal GP, Kaushal V, Herzog C, Yang C. Autophagy delays apoptosis in renal tubular epithelial cells in cisplatin cytotoxicity. *Autophagy* 2008; **4**: 710–712.
55. Yu H, Su J, Xu Y, Kang J, Li H, Zhang L *et al*. p62/SQSTM1 involved in cisplatin resistance in human ovarian cancer cells by clearing ubiquitinated proteins. *Eur J Cancer* 2011; **47**: 1585–1594.
56. Zhang N, Dai L, Qi Y, Di W, Xia P. Combination of FTY720 with cisplatin exhibits antagonistic effects in ovarian cancer cells: role of autophagy. *Int J Oncol* 2013; **42**: 2053–2059.
57. Chao A, Tsai CL, Wei PC, Hsueh S, Chao AS, Wang CJ *et al*. Decreased expression of microRNA-199b increases protein levels of SET (protein phosphatase 2A inhibitor) in human choriocarcinoma. *Cancer Lett* 2010; **291**: 99–107.
58. Wang TH, Chao A, Tsai CL, Chang CL, Chen SH, Lee YS *et al*. Stress-induced phosphoprotein 1 as a secreted biomarker for human ovarian cancer promotes cancer cell proliferation. *Mol Cell Proteomics* 2010; **9**: 1873–1884.
59. Hailey DW, Rambold AS, Satpute-Krishnan P, Mitra K, Sougrat R, Kim PK *et al*. Mitochondria supply membranes for autophagosome biogenesis during starvation. *Cell* 2010; **141**: 656–667.
60. Lin CY, Chao A, Wang TH, Hsueh S, Lee YS, Wu TI *et al*. A dual tyrosine kinase inhibitor lapatinib suppresses overexpression of matrix metalloproteinase 1 (MMP1) in endometrial cancer. *J Mol Med (Berl)* 2014; **92**: 969–981.
61. Tsai CL, Tsai CN, Lin CY, Chen HW, Lee YS, Chao A *et al*. Secreted stress-induced phosphoprotein 1 activates the ALK2-SMAD signaling pathways and promotes cell proliferation of ovarian cancer cells. *Cell Rep* 2012; **2**: 283–293.
62. Chao A, Lin CY, Lee YS, Tsai CL, Wei PC, Hsueh S *et al*. Regulation of ovarian cancer progression by microRNA-187 through targeting Disabled homolog-2. *Oncogene* 2012; **31**: 764–775.
63. Chao A, Lai CH, Tsai CL, Hsueh S, Hsueh C, Lin CY *et al*. Tumor stress-induced phosphoprotein 1 (STIP1) as a prognostic biomarker in ovarian cancer. *PLoS One* 2013; **8**: e57084.



Cell Death and Disease is an open-access journal published by **Nature Publishing Group**. This work is licensed under a **Creative Commons Attribution 4.0 International Licence**. The images or other third party material in this article are included in the article's Creative Commons licence, unless indicated otherwise in the credit line; if the material is not included under the Creative Commons licence, users will need to obtain permission from the licence holder to reproduce the material. To view a copy of this licence, visit <http://creativecommons.org/licenses/by/4.0>

Supplementary Information accompanies this paper on Cell Death and Disease website (<http://www.nature.com/cddis>)