

# Apoptosis is associated with triacylglycerol accumulation in Jurkat T-cells

NMS Al-Saffar<sup>\*1</sup>, JC Titley<sup>2</sup>, D Robertson<sup>3</sup>, PA Clarke<sup>2</sup>, LE Jackson<sup>1</sup>, MO Leach<sup>1</sup> and SM Ronen<sup>1</sup>

<sup>1</sup>Cancer Research UK Clinical Magnetic Resonance Research Group, Royal Marsden NHS Trust, Downs Road, Sutton Surrey SM2 5PT, UK; <sup>2</sup>Cancer Research UK Centre for Cancer Therapeutics, Royal Marsden NHS Trust, Downs Road, Sutton Surrey SM2 5PT, UK; <sup>3</sup>Electron Microscopy Unit, Institute of Cancer Research, Royal Marsden NHS Trust, Downs Road, Sutton Surrey SM2 5PT, UK

Magnetic resonance spectroscopy is increasingly used as a non-invasive method to investigate apoptosis. Apoptosis was induced in Jurkat T-cells by Fas mAb. <sup>1</sup>H magnetic resonance spectra of live cells showed an increase in methylene signal as well as methylene/methyl ratio of fatty acid side chains at 5 and 24 h following induction of apoptosis. To explain this observation, <sup>1</sup>H magnetic resonance spectra of cell extracts were investigated. These demonstrated a 70.0±7.0%, 114.0±8.0% and 90.0±5.0% increase in the concentration of triacylglycerols following 3, 5 and 7 h of Fas mAb treatment ( $P<0.05$ ). Confocal microscopy images of cells stained with the lipophilic dye Nile Red demonstrated the presence of lipid droplets in the cell cytoplasm. Quantification of the stained lipids by flow cytometry showed a good correlation with the magnetic resonance results ( $P\geq 0.05$  at 3, 5 and 7 h). <sup>31</sup>P magnetic resonance spectra showed a drop in phosphatidylcholine content of apoptosing cells, indicating that alteration in phosphatidylcholine metabolism could be the source of triacylglycerol accumulation during apoptosis. In summary, apoptosis is associated with an early accumulation of mobile triacylglycerols mostly in the form of cytoplasmic lipid droplets. This is reflected in an increase in the methylene/methyl ratio which could be detected by magnetic resonance spectroscopy.

British Journal of Cancer (2002) 86, 963–970. DOI: 10.1038/sj/bjc/6600188 www.bjcancer.com

© 2002 Cancer Research UK

**Keywords:** MRS; apoptosis; Fas; triacylglycerols

Apoptosis is a genetically controlled pathway of cell death which exhibits distinct morphological features. Accumulating evidence shows that apoptosis and genes associated with it have a significant effect on malignant phenotype. Moreover, it is now well documented that most cancer therapeutics kill cells *in vitro* and *in vivo* through the activation of apoptotic cell death (Ellis *et al*, 1997; Hickman, 1996). As a result intensive research has been focused on understanding the genetic basis of apoptosis and the development of novel therapies that are designed to launch specifically the apoptotic machinery of the cell. The development of methods for the detection of apoptosis would also be useful as early markers for response in treated tumours.

Magnetic resonance spectroscopy (MRS) has been used in several studies concerned with apoptotic cell death (Bhakoo and Bell, 1997; Williams *et al*, 1998; Ronen *et al*, 1999). In investigating cell death in several systems including Fas-induced apoptosis in Jurkat T-cells, Blankenberg and co-workers have found that the increase in methylene/methyl (CH<sub>2</sub>/CH<sub>3</sub>) signal intensity ratio of fatty acid side chains correlates with the onset of apoptosis, suggesting that <sup>1</sup>H MRS could be used to detect and quantify apoptotic cell death *in vitro* (Blankenberg *et al*, 1996, 1997). The authors speculate that the increase in this ratio is due to increased mobility of plasma membrane lipids. In contrast, an *in vivo* investigation of gene therapy-induced apoptosis showed an increase in both CH<sub>2</sub> and CH<sub>3</sub> resonances with no significant alteration in

their ratio (Hakumaki *et al*, 1999). In this case the alterations in <sup>1</sup>H MR spectra were reported to be associated with an accumulation of polyunsaturated fatty acids. <sup>13</sup>C and <sup>31</sup>P MRS have been applied to investigate the nature of the accumulated lipids and the mechanism underlying changes in lipid and fatty acid metabolism during apoptosis. Treatment of KB cells with Miltefosine (HePC) resulted in a decrease in phosphatidylcholine (PtdCho) and an increase in the neutral lipids triacylglycerols (TAGs) and diacylglycerols (DAGs) as well as fatty acid synthesis, indicating a possible impairment of the DAG pathway during HePC-induced apoptosis (Engelmann *et al*, 1996). An inhibition of PtdCho synthesis was also observed in HL-60 cells undergoing apoptosis induced by a variety of cytotoxic drugs (Williams *et al*, 1998).

In this study we investigated <sup>1</sup>H MR spectra of intact cells as well as cell extracts of control and apoptotic Jurkat T-cells. Combined with <sup>31</sup>P MRS, flow cytometry and confocal microscopy we have tried to determine the nature, origin and mechanism of lipid changes associated with apoptosis. We demonstrate that in intact cells, an increase in CH<sub>2</sub>/CH<sub>3</sub> ratio occurs in the early stage of Fas-induced apoptosis and is associated with an early accumulation of TAGs mostly in the form of cytoplasmic lipid droplets.

## MATERIALS AND METHODS

### Cell culture and treatment

Jurkat (human acute lymphoblastic T cell leukaemia, clone E6.1) cells were obtained from ECACC (UK) and grown in RPMI 1640 medium supplemented with 10% (v v<sup>-1</sup>) heat-inactivated foetal calf serum (FCS), 2 mM L-glutamine, 50 U ml<sup>-1</sup> penicillin and 50 µg ml<sup>-1</sup>

\*Correspondence: NMS Al-Saffar; E-mail: nada@icr.ac.uk  
Received 12 October 2001; revised 7 January 2002; accepted 10 January 2002

streptomycin (Gibco, UK) in an atmosphere of 5% CO<sub>2</sub> in air at 37°C. For biological and MRS investigations of apoptosis, Jurkat cells (10<sup>6</sup> cells ml<sup>-1</sup>) were stimulated with 100 ng ml<sup>-1</sup> mouse monoclonal IgM anti-human Fas mAb, clone CH-11 (TCS Biological, UK).

### Cell cycle analysis (CCA)

Cells (10<sup>6</sup>) were washed in phosphate buffered saline (PBS), fixed in 70% ethanol, incubated with 100 µg ml<sup>-1</sup> RNase A and 40 µg ml<sup>-1</sup> propidium iodide (PI) (Sigma, UK) in citrate-buffered saline for 30 min at 37°C (Hotz *et al*, 1994). DNA histograms were generated by fluorescence activated cell sorting (FACS) analysis using an EPICS Elite ESP cell sorter (Beckman-Coulter, High Wycombe, UK) at 488 nm. Data were plotted and analysed using WinMDI version 2.7 and Cylched flow cytometry application software (University of Wales College of Medicine, Cardiff based activities, UK).

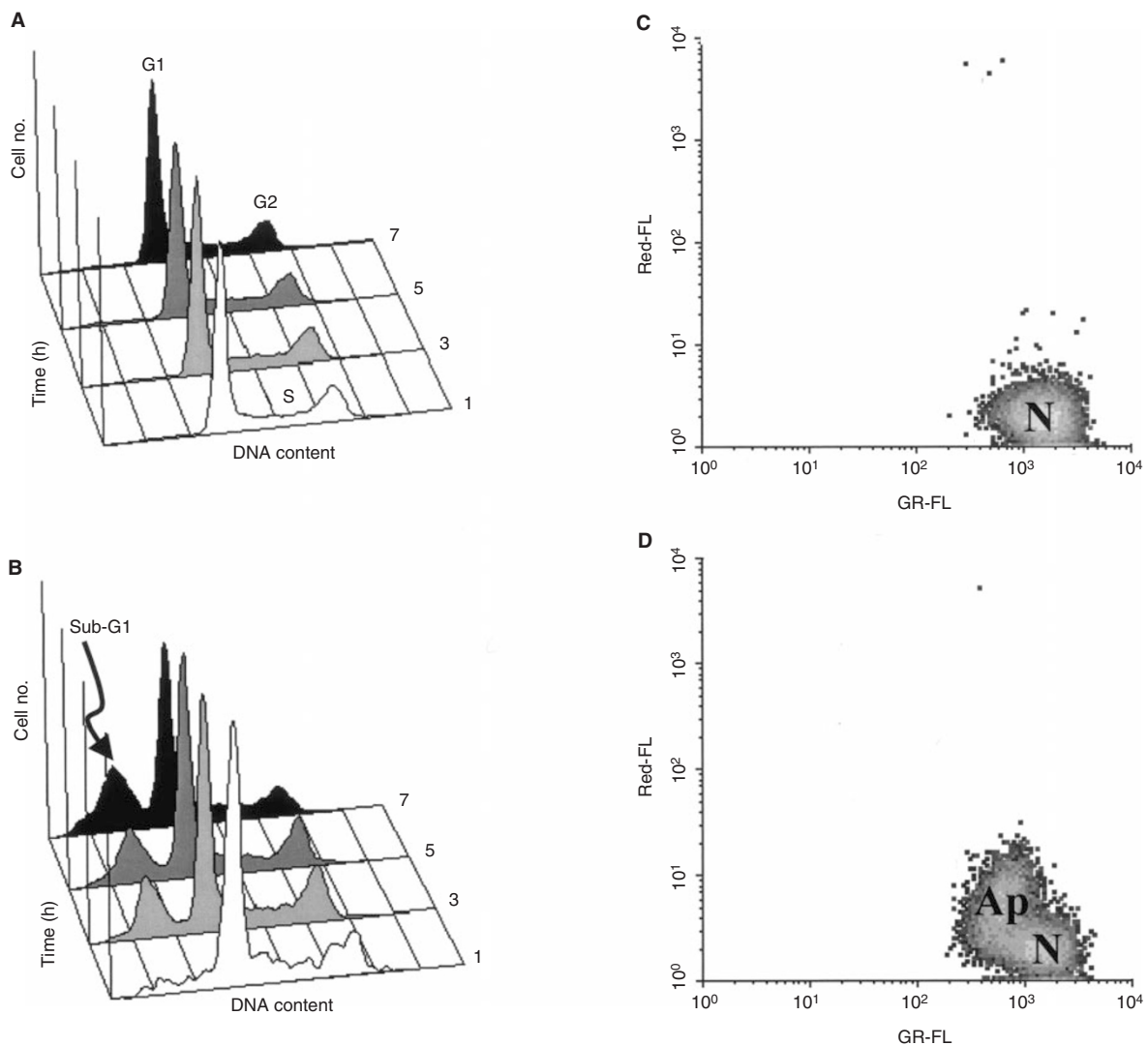
### Mitochondrial transmembrane potential ( $\Delta\Psi_m$ )

Mitochondrial  $\Delta\Psi_m$  was measured by incubating live cells (10<sup>6</sup>) at 37°C with 1 ml of PBS solution containing 50 nM of 3,3'-dihexy-

loxcarbocyanine iodide (DiOC<sub>6</sub> (3); Molecular Probes, UK) for 30 min. Samples were immediately analysed by FACS on an EPICS Elite ESP cell sorter. Data were analysed using WinMDI version 2.7 software.

### MRS of intact cells

Live cells (2 × 10<sup>8</sup>) were washed twice with PBS-D<sub>2</sub>O and suspended in 400 µl of PBS-D<sub>2</sub>O in a standard 5 mm NMR tube. A 410 µl capillary containing 0.075% TSP (Sigma, UK) in PBS-D<sub>2</sub>O served as an external reference (0.0 p.p.m.). <sup>1</sup>H MR spectra were acquired at room temperature on a 250 MHz Bruker spectrometer using a 60° flip angle, a 1 s relaxation delay, spectral width of 20 p.p.m. and 64 K data points. HDO resonance was suppressed by presaturation. Spectra were plotted and analysed using MestRe-C version 1.5.1 software (<http://qobruce.usc.es/jsgroup/MestRe-C/MestRe-C.html>). CH<sub>2</sub> and CH<sub>3</sub> contents were determined by integration and normalised relative to TSP and cell number. Lactate contribution to the CH<sub>2</sub> resonance was subtracted following deconvolution (Barba *et al*, 2001) using xcdplot software (Bruker).



**Figure 1** Cell cycle analysis by FACS of (A) Control, (B) Fas mAb treated (100 ng ml<sup>-1</sup>) Jurkat T-cells as a function of time. The presence of hypodiploid apoptotic cells is indicated by build up of the sub-G1 population. Analysis of mitochondrial  $\Delta\Psi_m$  of (C) Control, (D) Fas mAb treated (100 ng ml<sup>-1</sup>, 1 h) Jurkat T-cells by DiOC<sub>6</sub>(3) uptake. N=normal cells, strong green (DiOC<sub>6</sub>) log fluorescence (GR-FL), weak red (PI) log fluorescence (Red-FL); Ap=apoptotic cells, weak green (DiOC<sub>6</sub>) log fluorescence (GR-FL), weak red (PI) log fluorescence (Red-FL).

## MRS of cell extracts

At different time points, cell extracts were obtained from  $1-2 \times 10^8$  control or treated cells, using a modification of the dual phase extraction method (Ronen *et al*, 1999). This method separates aqueous metabolites, lipid metabolites and proteins.  $^{31}\text{P}$  MR spectra of the lipid fraction of cell extracts were acquired at room temperature on a 400 MHz Bruker spectrometer using a  $90^\circ$  flip angle, a 7 s relaxation delay, spectral width of 20 p.p.m., and 32 K data points. For  $^1\text{H}$  MR analysis, lipid samples were resuspended in  $700 \mu\text{l}$  of  $\text{CDCl}_3$  containing 0.03% TMS (Sigma, UK).  $^1\text{H}$  MR spectra were acquired at room temperature on a 600 MHz Bruker spectrometer using a  $45^\circ$  flip angle and a 2 s relaxation delay, spectral width of 12 p.p.m. and 32 K data points. To remove the broad peaks arising from relatively immobile components of lipid cell extracts and to enable quantification of TAG peaks at 4.3 p.p.m.,  $^1\text{H}$  MR spectra of lipid extracts were also acquired using a Carr-Purcell-Meiboom-Gill (CPMG) pulse sequence  $90^\circ-(\tau-180^\circ-\tau)_n$ -acquire ( $\tau=0.77$  ms,  $n=128$ ) and a 2 s relaxation delay. Spectra were plotted and analysed as above. Metabolite contents were determined by integration and normalised relative to internal standards and cell number.

## Nile Red staining

Unfixed cells ( $10^6$ ) or cells fixed for 1 h at room temperature with 1 ml of 4% paraformaldehyde/PBS pH 7.4, were stained with Nile Red as described previously (Greenspan *et al*, 1985). Briefly, cell

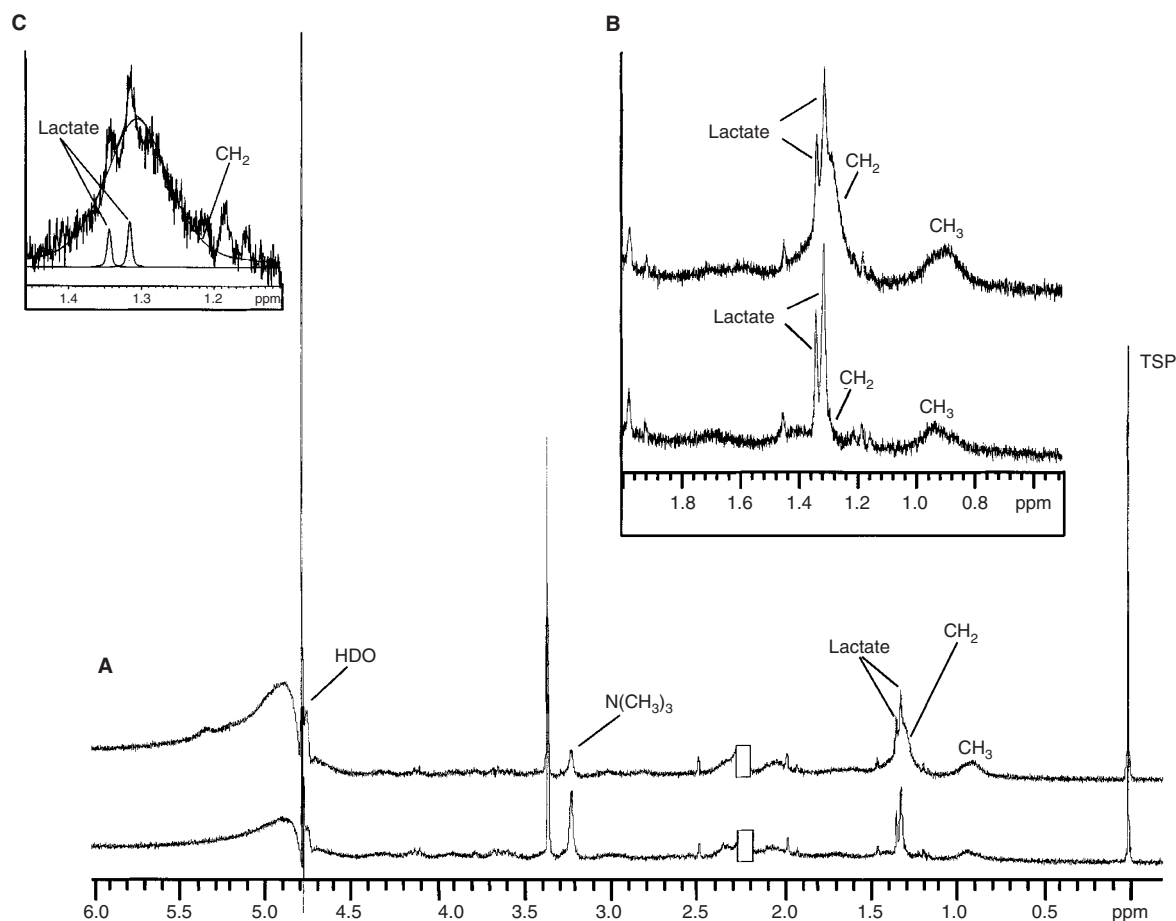
pellets were rinsed once with RPMI 1640, incubated at room temperature with 1 ml of PBS solution containing  $100 \text{ ng ml}^{-1}$  of the fluorescent stain Nile Red (Sigma, UK) for at least 5 min. Co-staining with Nile Red and PI was obtained by permeabilising the fixed cells with 0.5% Triton X-100/PBS for 10 min, incubating at  $37^\circ\text{C}$  with RNase A for 30 min, staining cells with Nile Red as above and then staining cell pellets with PI for 2 min. Stained cells were mounted in a Vectorshield without DAPI (Vector Laboratories, USA), then viewed with a Leica TCS SP confocal microscope. Fixed cells were used in the case of confocal microscopy as immediate access to equipment was not always possible (no difference in neutral lipid localisation within cells was observed between fixed and live cells). Live cells stained with Nile Red were also analysed on an EPICS Elite ESP cell sorter. Data were analysed using WinMDI version 2.7 software.

## Statistics

Results are expressed as mean  $\pm$  s.d. and  $n \geq 3$  unless otherwise specified. Data were analysed using an unpaired two-tailed Student's standard *t*-test or ANOVA (Arcus Quickstat Biomedical) and differences were assumed to be significant when  $P < 0.05$ .

## RESULTS

The human T-cell leukaemia 'Jurkat' were used as an *in vitro* model to study the metabolic changes that are detectable by  $^1\text{H}$



**Figure 2** (A)  $^1\text{H}$  MR spectra of control (bottom) and 24 h Fas mAb treated ( $100 \text{ ng ml}^{-1}$ ) (top) intact Jurkat T-cells, (B) An expanded region of the  $^1\text{H}$  MR spectra showing the increase in  $\text{CH}_3$  and  $\text{CH}_2$  resonances following induction of apoptosis, (C) An example of the deconvolution carried out to quantify changes in the  $\text{CH}_2$  peak. Spectra are the result of 128 scans plotted with line broadening of 0.1 Hz and are acquired using similar cell numbers for control and treated cells (residual acetone @ 2.22 p.p.m. was removed from plots).

MRS in intact cells and cell extracts following Fas-induced apoptosis. The Fas system was chosen as a model system as it activates the two pathways described for apoptosis in general (Green, 2000). Treatment with the Fas mAb resulted in induction of apoptosis. Figure 1A,B show the time course for the appearance of hypodiploid apoptotic cells detected as a sub-G1 population of cells following cell cycle analysis (CCA) by FACS. Apoptotic cells could be detected within 3 h of Fas mAb treatment. Loss of mitochondrial  $\Delta\Psi_m$  occurred within 1 h (Figure 1C,D).

MRS was used to identify the metabolic changes occurring following Fas-induced apoptosis.  $^1\text{H}$  MR spectra of intact Jurkat cells were acquired following 5 and 24 h of Fas mAb treatment. Spectra of treated cells showed a  $314.0 \pm 107.0\%$  and  $603.0 \pm 242.0\%$  ( $P < 0.02$ ) increase in  $\text{CH}_2$  signal as well as a  $224 \pm 104.0\%$  and  $196 \pm 69.0\%$  ( $P < 0.04$ ) increase in  $\text{CH}_2/\text{CH}_3$  ratio at 5 and 24 h respectively. Interestingly, an increase in the  $\text{CH}_3$  resonance was only observed following 24 h treatment relative to control (up to  $246.0 \pm 67.0\%$ ,  $P < 0.003$ ) (Figure 2). However, using both CCA and morphological analysis as well as trypan blue exclusion we found that the majority of 24 h treated cells had undergone secondary necrosis. In contrast, cells treated for 5 h displayed clear apoptotic morphology. Consequently, further investigations of lipid metabolism during apoptosis concentrated on cells treated with Fas mAb for up to 7 h when no secondary necrosis could be observed.

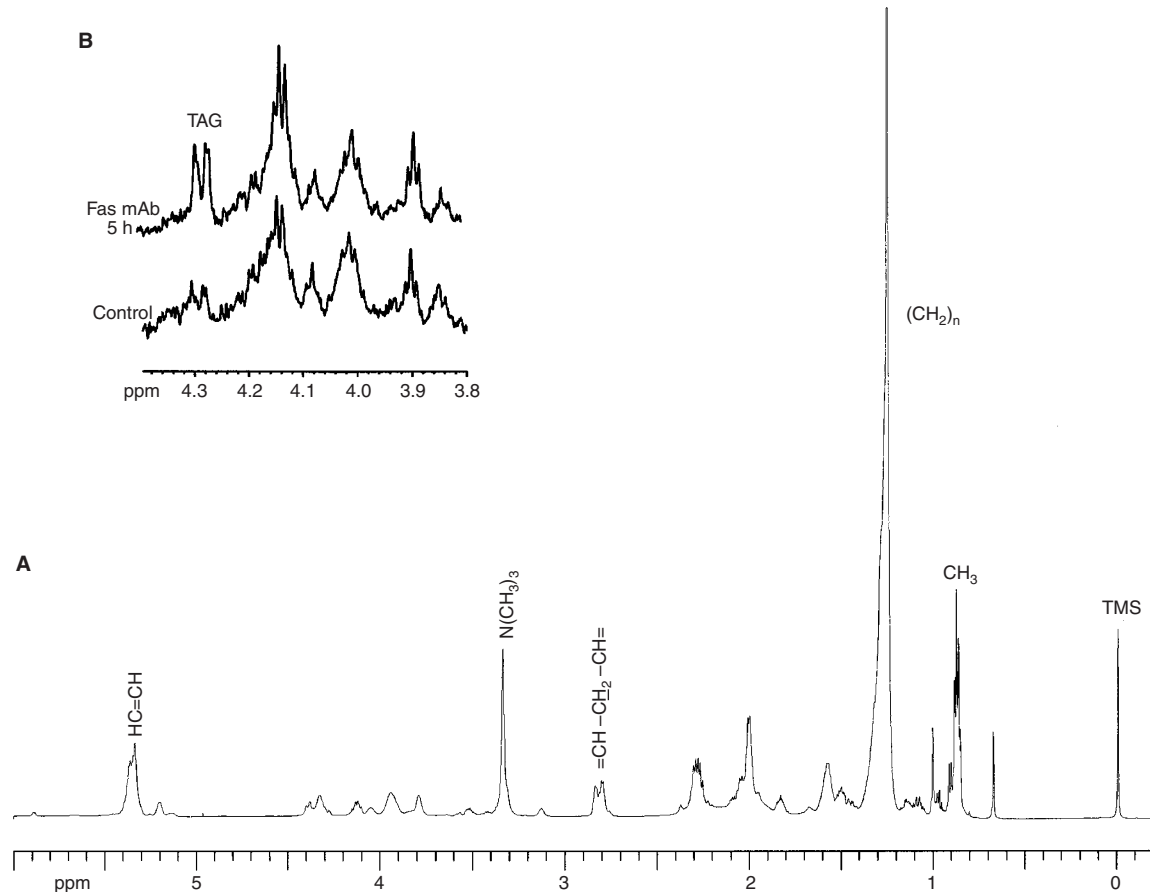
In order to remove proteins and other aqueous metabolites that could contribute to the  $\text{CH}_3$  and  $\text{CH}_2$  peaks in  $^1\text{H}$  MR spectra (Kauppinen *et al*, 1993; Di Vito *et al*, 2001), further investigations

of lipid metabolism were performed by monitoring lipid cell extracts at different time points. An example of the lipid phase  $^1\text{H}$  MR spectrum of control Jurkat cell extracts is shown in Figure 3A. No significant change was found in the  $\text{CH}_2$  and  $\text{CH}_3$  peak areas or in the  $\text{CH}_2/\text{CH}_3$  ratio of the treated cell extracts relative to control. Furthermore, there were no detectable changes in treated *vs* control cells in the areas of the peaks resonating at 5.4 and 2.8 p.p.m., which are assigned to the vinyl and bis-allylic protons of mobile polyunsaturated fatty acids. However, analysis of  $^1\text{H}$  MR spectra run under the CPMG pulse sequence showed an increase in the peaks resonating at 4.3 p.p.m. in treated cell extracts relative to controls (Figure 3B). Literature assignments show that this peak results from the interactions between protons at carbon 1 and 3 of the glycerol backbone of TAG with their geminal

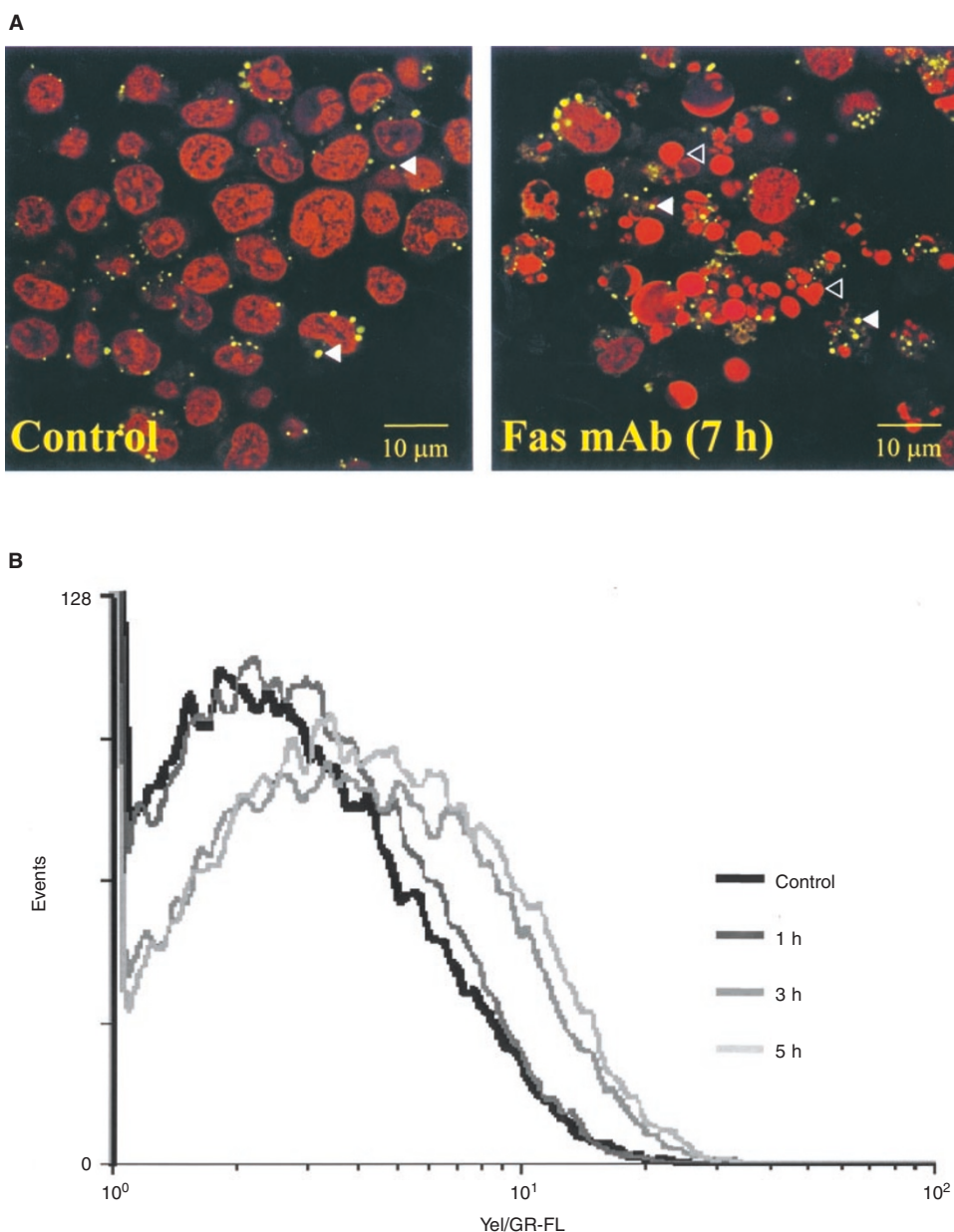
**Table 1**  $^1\text{H}$  MRS quantification of triacylglycerols in Fas mAb treated ( $100 \text{ ng ml}^{-1}$ ) Jurkat T-cells relative to control

Time (h)	TAG <sup>a</sup> (%)	s.d.	P-value <sup>b</sup>
0	100.0	0	–
1	98.0	9.0	0.8
3	170.0	7.0	0.005
5	214.0	8.0	0.05
7	190.0 <sup>c</sup>	5.0	–

<sup>a</sup>Triacylglycerols. <sup>b</sup>Unpaired two-tailed Student's standard *t*-test. <sup>c</sup> $n=2$  (for all other experiments  $n=3$ ).



**Figure 3** (A)  $^1\text{H}$  MR spectrum of the lipid fraction of Jurkat T-cell extracts, (B) An expanded region of the CPMG  $^1\text{H}$  MR spectra of the lipid fractions of control and Fas mAb treated ( $100 \text{ ng ml}^{-1}$ ) Jurkat T-cell extracts. This illustrates the increase in the triacylglycerol (TAG)-specific peak around 4.3 p.p.m. Spectra are the result of 128 scans plotted with line broadening of 1 Hz.



**Figure 4** (A) Confocal microscopy images of control and Fas mAb treated ( $100 \text{ ng ml}^{-1}$ ) Jurkat T-cells co-stained with the lipophilic dye Nile Red and PI. The yellow represents Nile Red stained neutral lipid droplets, examples are indicated by full arrowheads. Examples of apoptotic bodies are indicated by open arrowheads. (B) Yellow/Green log fluorescence (Yel/GR-FL) in Nile Red stained Jurkat T-cells following treatment with Fas mAb ( $100 \text{ ng ml}^{-1}$ ) as a function of time. This illustrates the build up of neutral lipids in treated cells as detected by FACS.

**Table 2** Flow cytometric quantification of yellow/green fluorescence emitted from Nile Red stained Fas mAb treated ( $100 \text{ ng ml}^{-1}$ ) Jurkat T-cells relative to control

Time (h)	Y/G FL <sup>a</sup> (%)	s.d.	P-value <sup>b</sup>
0	100.0	0	–
1	129.0	24.0	0.07
3	146.0	18.0	0.006
5	171.0	28.0	0.007
7	161.0 <sup>c</sup>	23.0	0.02

<sup>a</sup>Yellow/green log fluorescence. <sup>b</sup>Unpaired two-tailed Student's standard *t*-test. <sup>c</sup> $n=4$  (for all other experiments  $n=5$ ).

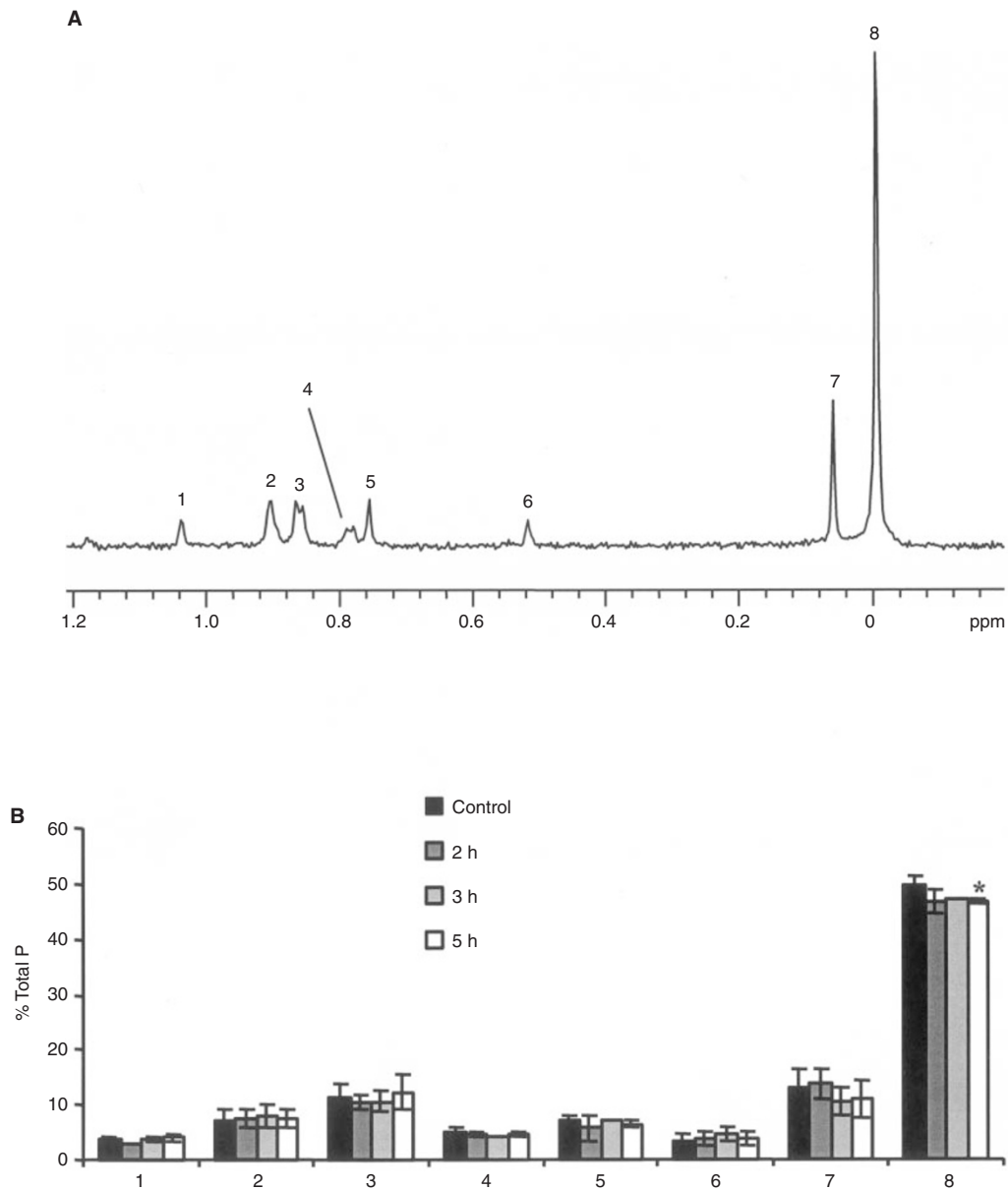
(4.17 p.p.m.) and vicinal (5.25 p.p.m.) protons giving rise to a doublet of doublet resonances which is specific to TAG (Casu *et al*, 1991). Assignments were confirmed by 2D COSY <sup>1</sup>H MRS (data not shown). As illustrated in Table 1, quantification of the amount of TAG showed a significant increase following treatment with Fas mAb (up to  $214.0 \pm 8.0\%$  at 5 h,  $P < 0.05$ ).

Confocal microscopy images of cells stained with Nile Red – a lipophilic dye that serves as a sensitive stain for the detection of neutral lipids (Greenspan *et al*, 1985) – demonstrated the presence of lipid droplets in the cell cytoplasm. Confocal microscopy images of cells co-stained with PI and Nile Red further confirmed the onset of apoptosis which was indicated by the presence of apoptotic bodies in treated cells compared to controls (Figure 4A). It also

showed that cytoplasmic lipid droplets within the treated population have increased in size and fluorescence intensity.

Flow cytometry was used for an accurate quantification of mobile lipid content per cell. This showed that fluorescence emitted by Nile Red stained neutral lipids increased as a function of time following treatment with Fas mAb (Figure 4B). As illustrated in Table 2, quantification of the mean fluorescence emitted per cell showed a significant increase following the induction of apoptosis (up to  $171.0 \pm 28.0\%$  at 5 h,  $P < 0.01$ ) relative to control ( $n=5$ ). This increase showed a good correlation with the amount of TAGs measured by  $^1\text{H}$  MRS ( $P \geq 0.05$   $^1\text{H}$  MRS vs FACS for each time point). Furthermore, the accumulation of neutral lipids was first detected by FACS at 1 h ( $129\% \pm 24.0\%$ ,  $P < 0.08$ ). This is as early as the loss of mitochondrial  $\Delta\Psi_m$ , a known early event in the apoptotic cascade (Figure 1C,D).

To investigate if neutral lipid accumulation in our model is caused by cell cycle arrest as reported in some systems (Delikatny *et al*, 1996; Barba *et al*, 1999), we used FACS analysis to quantify the DNA content of control and treated cells. Cell cycle analysis showed that up to 7 h, Fas mAb treatment has only resulted in the appearance of the subG1 peak indicative of apoptosis. When the distribution of cells in different phases of the cell cycle was determined, control cells and the non-apoptotic fraction of Fas-treated cells had very similar distributions. Both in control and treated cells the distribution ranged between 55–58% in G1, 30–35% in S and 10–12% in G2 phases ( $n=4$ ) over different time points. Moreover, the number of Fas-treated cells was comparable to control cells throughout the treatment time, ruling out any cytostatic effect of Fas mAb.



**Figure 5** (A)  $^1\text{H}$  decoupled  $^{31}\text{P}$  MR spectrum of the lipid fractions of Jurkat T-cell extracts (1=cardiolipin, 2=plasmalogen phosphatidylethanolamine, 3=phosphatidylethanolamine, 4=phosphatidylserine, 5=sphingomyelin, 6=phosphatidylinositol, 7=plasmalogen phosphatidylcholine, 8=phosphatidylcholine). Spectrum is the result of 1280 scans plotted with line broadening of 0.1 Hz. (B) Time course for the changes in phospholipid content of Jurkat T-cells showing the drop in phosphatidylcholine levels following Fas mAb treatment ( $100 \text{ ng ml}^{-1}$ ) (\*  $P < 0.01$ ).



The  $^{31}\text{P}$  MR spectrum of the lipid fraction of control Jurkat T-cells is shown in Figure 5A. The only change observed was in PtdCho which dropped from  $50 \pm 2.0\%$  of the total phospholipid content in control to  $47 \pm 0.5\%$  following 5 h of treatment ( $P < 0.01$ ) (Figure 5B).

## DISCUSSION

Using  $^1\text{H}$  MRS, we have investigated spectra of intact cells as well as cell extracts of control and apoptotic Jurkat T-cells. Combined with  $^{31}\text{P}$  MRS, flow cytometry and confocal microscopy we have tried to determine the nature, origin and mechanism of lipid changes associated with apoptosis.

In agreement with previous reports (Blankenberg *et al*, 1996, 1997), an increase in the  $\text{CH}_2/\text{CH}_3$  ratio was observed in  $^1\text{H}$  MR spectra of intact apoptotic cells following 5 and 24 h of Fas mAb treatment. In addition, an increase in both  $\text{CH}_2$  and  $\text{CH}_3$  resonances was also observed in line with other work (Hakumaki *et al*, 1999). However this increase was only observed following 24 h of treatment, whereas at 5 h an increase in  $\text{CH}_2$  was observed but  $\text{CH}_3$  remained constant. This might be due to the fact that at the late 24 h time point, the majority of the cells had undergone secondary necrosis leading to loss of cell membrane integrity. Therefore to investigate apoptosis-specific changes, we have concentrated on investigating changes in lipid metabolism during the first 7 h following Fas mAb treatment when the majority of cells displayed apoptotic morphology and 99.0% of the cells had retained membrane integrity.

A change in the  $^1\text{H}$  MRS lipid profile can result from an increase in the mobility of lipid fatty acid chains as a result of a change in cellular localisation, membrane composition, or an increase in fatty acid synthesis. It could also be due to a change in the degree of saturation of fatty acid side chains. As mentioned above,  $^1\text{H}$  MR spectra of intact Jurkat cells treated with Fas mAb showed an increase in the  $\text{CH}_2/\text{CH}_3$  ratio relative to control indicating a possible increase in lipid mobility and/or fatty acid synthesis.  $^1\text{H}$  MR spectra of cell extracts were thus investigated to learn more about the nature of the observed changes. Extraction destroys the supramolecular organisation of all lipids in the cells including the association between cholesterol esters and TAGs and makes it impossible to distinguish between those which were mobile and MR-visible in the intact cells and those which were immobilised, for example in the bilayer, and thus MR-invisible.  $^1\text{H}$  MR spectra of the lipid fractions of control and treated cell extracts were therefore used to investigate whether treatment with Fas mAb had led to an increase in fatty acid synthesis. Spectra of lipid fractions of control and treated cell extracts showed that the  $\text{CH}_2$  and  $\text{CH}_3$  peak areas as well as  $\text{CH}_2/\text{CH}_3$  ratio were constant, suggesting that the total amount and composition of fatty acids within the cells did not change with the onset of apoptosis. An increase in  $\text{CH}_2$  and  $\text{CH}_3$  has been observed previously, and was associated with an increase in polyunsaturated fatty acid concentration (Hakumaki *et al*, 1999). In contrast, in our cells no change in the degree of unsaturation of fatty acid chains was detected as indicated by the peaks resonating at 2.8 and 5.4 p.p.m.

In our model, onset of apoptosis and alterations in  $\text{CH}_2/\text{CH}_3$  ratio were associated with an increase in mobile TAG concentration. Confocal microscopy images of cells stained with the lipophilic dye Nile Red demonstrated that neutral lipids detected by  $^1\text{H}$  MRS could originate from lipid droplets that are located in the cell cytoplasm. Results of fluorescence intensity of Nile Red stained neutral lipids obtained by flow cytometry and the increase in the concentration of TAGs detected by  $^1\text{H}$  MRS were within experimental error, suggesting that TAG accumulation in Jurkat T-cells originates mostly from cytoplasmic lipid droplets. This is in agreement with results from others reporting diffusion coefficient values for lipid signals in apoptotic cells which are consistent with lipids

present in cytoplasmic droplets rather than in restricted membrane domains (Hakumaki *et al*, 1999).

Prior studies have shown that the prominent neutral lipid signals detected by  $^1\text{H}$  MRS can be due to cell cycle arrest caused by saturation density or acidic pH (Delikatny *et al*, 1996; Barba *et al*, 1999). Others have speculated that accumulation of lipids is possibly due to cells undergoing growth arrest prior to apoptosis subsequent to gene therapy (Hakumaki *et al*, 1999). This study shows no accumulation of cells in a particular phase of the cell cycle, suggesting that the neutral lipids detected in our  $^1\text{H}$  MR spectra of Jurkat cells are correlated only with apoptosis.

It is also interesting to note that the accumulation of TAGs was first detected at 1 h following the stimulation of the Fas pathway which is as early as the loss of the mitochondrial  $\Delta\Psi_m$  and prior to the appearance of the hypodiploid cells which occurred at 3 h following Fas mAb treatment. This indicates that Fas-induced apoptosis correlates with a relatively early increase in TAGs.

Regarding the source of the accumulated TAGs,  $^1\text{H}$  MRS-detected neutral lipid accumulation could result from an increase in fatty acid synthesis and subsequent accumulation of TAGs. However, this can be ruled out by the fact that no increase in the  $\text{CH}_2$  and  $\text{CH}_3$  peak areas was detected in spectra of cell extracts.

$^1\text{H}$  MRS-detected neutral lipid accumulation has also been suggested to result from impairment in the PtdCho turnover pathway either by activated PtdCho catabolism, or by inactivated PtdCho anabolism (Veale *et al*, 1996). This is in line with our observation of a significant drop in PtdCho. Considering the PtdCho anabolic pathway, as the cells are preparing to die, they could be reducing their uptake of choline, hence less PtdCho would be synthesised. This would lead to an increase in the other PtdCho substrate DAG, which could then be converted to TAG by the cells to prevent disruption of cellular metabolism (Exton, 1994). Others have reported an inhibition of PtdCho synthesis at the level of cytidine diphosphate-choline:1,2-diacylglycerol choline phosphotransferase (CPT) following intracellular acidification (Williams *et al*, 1998; Anthony *et al*, 1999). This could be the cause for the accumulation of TAGs in our cells.

Considering the PtdCho catabolic pathway, different phospholipases have been reported to be activated during Fas-induced apoptosis including PtdCho-specific phospholipase C (Cifone *et al*, 1995), phospholipase  $A_2$  (Atsumi *et al*, 1998) and phospholipase D (Han *et al*, 1999). The increase in lipids associated with HSV-tk-induced apoptosis was attributed to the hydrolysis of PtdCho into lysophosphatidylcholine and free fatty acids via the activation of phospholipase  $A_2$  (Hakumaki *et al*, 1999).

Lysophosphatidylcholine is below the detection level in our control and treated cell spectra. Hence some increase in lysophosphatidylcholine could remain unobserved in our system. Lysophosphatidylcholine could also be hydrolysed into fatty acids and glycerophosphocholine (GPC). However, we have found that GPC dropped rather than increased in our treated cells (data not shown), indicating that this catabolic pathway is unlikely in our system. Other groups have suggested that  $^1\text{H}$  MRS detectable mobile lipids might be generated by the catabolism of PtdCho via the action of PtdCho-specific phospholipase C activity (Veale *et al*, 1997; Ferretti *et al*, 1999). In our system this is not very likely because phosphocholine drops following treatment (Al-Saffar *et al*, 1999). Further work is required to determine whether the PtdCho depletion observed in our cells is linked to the accumulation of TAGs described here.

In summary, we have demonstrated that apoptosis correlates with an increase in  $\text{CH}_2/\text{CH}_3$  ratio as well as an accumulation of TAGs in cytoplasmic lipid droplets. This event is specific to apoptosis and occurs as early as the loss of mitochondrial  $\Delta\Psi_m$  and hence could be a useful indicator of apoptotic cell death in treated tumours. These findings are also being extended to chemotherapy induced apoptosis.

## ACKNOWLEDGEMENTS

The authors would like to thank the University of London Intercollegiate Research Services (ULIRS) at King's College London and Queen Mary and Westfield College for the use of their NMR

## REFERENCES

- Al-Saffar NM, Clarke PA, DiStefano F, Leach MO, Ronen SM (1999) Detection of metabolic changes associated with Fas- and chemotherapy-induced apoptosis using MRS. *Proc ISMRM* (Abstract)
- Anthony ML, Zhao M, Brindle KM (1999) Inhibition of phosphatidylcholine biosynthesis following induction of apoptosis in HL-60 cells. *J Biol Chem* **274**: 19686–19692
- Atsumi G-I, Tajima M, Hadano A, Nakatani Y, Murakami M, Kudo I (1998) Fas-induced arachidonic acid release is mediated by Ca<sup>2+</sup>-independent phospholipase A2 but not cytosolic phospholipase A2, which undergoes proteolytic inactivation. *J Biol Chem* **273**: 13870–13877
- Barba I, Cabañas ME, Arus C (1999) The relationship between nuclear magnetic resonance-visible lipids, lipid droplets, and cell proliferation in cultured C6 cells. *Cancer Res* **59**: 1861–1868
- Barba I, Mann P, Cabañas ME, Arus C, Gasparovic C (2001) Mobile lipid production after confluence and pH stress in perfused C6 cells. *NMR in Biomedicine* **14**: 33–40
- Bhakoo KK, Bell JD (1997) The application of NMR spectroscopy to the study of apoptosis. *Cell Mol Biol* **43**: 621–629
- Blankenberg FG, Katsikis PD, Storrs RW, Beaulieu C, Spielman D, Chen JY, Naumovski L, Tait JF (1997) Quantitative analysis of apoptotic cell death using proton nuclear magnetic resonance spectroscopy. *Blood* **89**: 3778–3786
- Blankenberg FG, Storrs RW, Naumovski L, Goralski T, Spielman D (1996) Detection of apoptotic cell death by proton nuclear magnetic resonance spectroscopy. *Blood* **87**: 1951–1956
- Casu M, Anderson GJ, Choi G, Gibbons WA (1991) NMR lipid profile of cells, tissues and body fluids: 1-D and 2-D proton NMR of lipids from rat liver. *Magn Reson Chem* **29**: 594–602
- Cifone MG, Roncaioli P, De Maria R, Camarda G, Santoni A, Ruberti G, Testi R (1995) Multiple pathways originate at the Fas/APO-1 (CD95) receptor: Sequential involvement of phosphatidylcholine-specific phospholipase C and acidic sphingomyelinase in the propagation of the apoptotic signal. *EMBO J* **14**: 5859–5868
- Delikatny EJ, Lander CM, Jeitner TM, Hancock R, Mountford CE (1996) Modulation of MR-visible mobile lipid levels by cell culture conditions and correlations with chemotactic response. *Int J Cancer* **65**: 238–245
- Di Vito M, Lenti L, Knijn A, Iorio E, d'Agostino F, Molinari A, Calcabrini A, Stringaro A, Meschini S, Arancia G, Bozzi A, Strom R, Podo F (2001) H-1 NMR-visible mobile lipid domains correlate with cytoplasmic lipid bodies in apoptotic T-lymphoblastoid cells. *Biochim Biophys Acta-Mol Cell Biol Lipids* **1530**: 47–66
- Ellis PA, Smith IE, McCarthy K, Detre S, Salter J, Dowsett M (1997) Preoperative chemotherapy induces apoptosis in early breast cancer [4]. *Lancet* **349**: 849
- Engelmann J, Henke J, Willker W, Kutscher B, Nossner G, Engel J, Leibfritz D (1996) Early stage monitoring of miltefosine induced apoptosis in KB cells by multinuclear NMR spectroscopy. *Anticancer Res* **16**: 1429–1439
- Exton JH (1994) Phosphatidylcholine breakdown and signal transduction. *Biochim Biophys Acta – Lipids & Lipid Metabol* **1212**: 26–42
- Ferretti A, Knijn A, Iorio E, Pulciani S, Giambenedetti M, Molinari A, Meschini S, Stringaro A, Calcabrini A, Freitas I, Strom R, Arancia G, Podo F (1999) Biophysical and structural characterization of 1H-NMR-detectable mobile lipid domains in NIH-3T3 fibroblasts. *Biochim Biophys Acta-Mol Cell Biol Lipids* **1438**: 329–348
- Green DR (2000) Apoptotic pathways: Paper wraps stone blunts scissors. *Cell* **102**: 1–4
- Greenspan P, Mayer EP, Fowler SD (1985) Nile red: A selective fluorescent stain for intracellular lipid droplets. *J Cell Biol* **100**: 965–973
- Hakumaki JM, Poptani H, Sandmair A-M, Yla-Herttuala S, Kauppinen RA (1999) 1H MRS detects polyunsaturated fatty acid accumulation during gene therapy of glioma: Implications for the in vivo detection of apoptosis. *Nature Med* **5**: 1323–1327
- Han J-S, Hyun B-C, Kim J-H, Shin I (1999) Fas-mediated activation of phospholipase D is coupled to the stimulation of phosphatidylcholine-specific phospholipase C in A20 cells. *Arch Biochem Biophys* **367**: 233–239
- Hickman JA (1996) Apoptosis and chemotherapy resistance. *Euro J Can* **32**: 921–926
- Hotz MA, Gong J, Traganos F, Darzynkiewicz Z (1994) Flow cytometric detection of apoptosis: Comparison of the assays of in situ DNA degradation and chromatin changes. *Cytometry* **15**: 237–244
- Kauppinen RA, Niskanen T, Hakumaki JM, Williams SR (1993) Quantitative analysis of <sup>1</sup>H NMR detected proteins in the rat cerebral cortex *in vivo* and *in vitro*. *NMR in Biomedicine* **6**: 242–247
- Ronen SM, DiStefano F, McCoy CL, Robertson D, Smith TAD, Al-Saffar NM, Titley J, Cunningham DC, Griffiths JR, Leach MO, Clarke PA (1999) Magnetic resonance detects metabolic changes associated with chemotherapy-induced apoptosis. *Br J Cancer* **80**: 1035–1041
- Veale MF, Dingley AJ, King GF, King NJC (1996) 1H-NMR visible neutral lipids in activated T lymphocytes: Relationship to phosphatidylcholine cycling. *Biochim Biophys Acta – Lipids & Lipid Metabol* **1303**: 215–221
- Veale MF, Roberts NJ, King GF, King NJC (1997) The generation of 1H-NMR-Detectable mobile lipid in stimulated lymphocytes: Relationship to cellular activation, the cell cycle, and phosphatidylcholine-specific phospholipase C. *Biochem Biophys Res Commun* **239**: 868–874
- Williams SNO, Anthony ML, Brindle KM (1998) Induction of apoptosis in two mammalian cell lines results in increased levels of fructose-1,6-bisphosphate and CDP-choline as determined by 31P MRS. *Magn Reson Med* **40**: 411–420

service. Cancer Research UK funding is gratefully acknowledged by NMS Al-Saffar, LE Jackson, MO Leach and SM Ronen (grant number SP1780/0103), PA Clarke and JC Titley (grant number SP2330).