

ORIGINAL ARTICLE

Glucagon-like peptide 1 receptor activation regulates cocaine actions and dopamine homeostasis in the lateral septum by decreasing arachidonic acid levels

IA Reddy^{1,12}, JA Pino^{2,3,12}, P Weikop^{4,5}, N Osses², G Sørensen^{4,5}, T Bering⁴, C Valle⁶, RJ Bluett^{1,7}, K Erreger⁸, G Wortwein^{4,9}, JG Reyes², D Graham¹⁰, GD Stanwood¹⁰, TA Hackett^{1,11}, S Patel⁷, A Fink-Jensen^{4,5}, GE Torres^{3,13} and A Galli^{1,8,13}

Agonism of the glucagon-like peptide 1 (GLP-1) receptor (GLP-1R) has been effective at treating aspects of addictive behavior for a number of abused substances, including cocaine. However, the molecular mechanisms and brain circuits underlying the therapeutic effects of GLP-1R signaling on cocaine actions remain elusive. Recent evidence has revealed that endogenous signaling at the GLP-1R within the forebrain lateral septum (LS) acts to reduce cocaine-induced locomotion and cocaine conditioned place preference, both considered dopamine (DA)-associated behaviors. DA terminals project from the ventral tegmental area to the LS and express the DA transporter (DAT). Cocaine acts by altering DA bioavailability by targeting the DAT. Therefore, GLP-1R signaling might exert effects on DAT to account for its regulation of cocaine-induced behaviors. We show that the GLP-1R is highly expressed within the LS. GLP-1, in LS slices, significantly enhances DAT surface expression and DAT function. Exenatide (Ex-4), a long-lasting synthetic analog of GLP-1 abolished cocaine-induced elevation of DA. Interestingly, acute administration of Ex-4 reduces septal expression of the retrograde messenger 2-arachidonylglycerol (2-AG), as well as a product of its presynaptic degradation, arachidonic acid (AA). Notably, AA reduces septal DAT function pointing to AA as a novel regulator of central DA homeostasis. We further show that AA oxidation product γ -ketoaldehyde (γ -KA) forms adducts with the DAT and reduces DAT plasma membrane expression and function. These results support a mechanism in which postsynaptic septal GLP-1R activation regulates 2-AG levels to alter presynaptic DA homeostasis and cocaine actions through AA.

Translational Psychiatry (2016) 6, e809; doi:10.1038/tp.2016.86; published online 17 May 2016

INTRODUCTION

Cocaine addiction is a highly prevalent disorder characterized by continued drug use in spite of negative consequences. Despite the harmful effects of cocaine, the development of pharmacotherapies to treat cocaine addiction has been slow. This is because modulators of addictive behavior are limited and we lack a comprehensive understanding of their mechanisms. Starting with the discovery that glucagon-like peptide 1 (GLP-1) regulates amphetamine-induced locomotion,¹ GLP-1 receptor (GLP-1R) agonism has been shown to reduce the rewarding properties of cocaine and other drugs of abuse in rodents.^{2–4}

GLP-1 is both a hormone produced by L cells of the intestine and a neuropeptide produced by the nucleus of the tractus solitarius.^{5,6} Notably, GLP-1 synthetic analogs are already approved to treat type 2 diabetes and obesity in humans.^{7,8} These synthetic derivatives have a greatly extended half-life over

endogenous GLP-1.^{5,7} As such, they remain in circulation long enough to cross the blood–brain barrier.⁹ The importance of the brain bioavailability of GLP-1 analogs is underscored by the prominent expression of the GLP-1R within the brain.¹⁰ Ex-4 is one such synthetic GLP-1 analog that has been used extensively to demonstrate that GLP-1R activation reduces the preference and actions of cocaine, amphetamine, alcohol and nicotine.^{1,2,11,12–17} Importantly, the GLP-1R 168Ser allele has been associated with increased measures of alcohol self-administration in humans.¹⁷ These data suggest that GLP-1R signaling might regulate common mechanisms within the brain's reward system.

The neurotransmitter dopamine (DA) underlies the rewarding properties of drugs of abuse, as well as natural rewards.¹⁸ It is released at DA terminals during drug intake and in anticipation of the consumption of drugs.^{18,19} We therefore hypothesized that the effects of GLP-1R stimulation on cocaine reward would occur

¹Neuroscience Program, Vanderbilt University School of Medicine, Nashville, TN, USA; ²Instituto de Química, Facultad de Ciencias, Pontificia Universidad Católica de Valparaíso, Valparaíso, Chile; ³Department of Pharmacology and Therapeutics, College of Medicine, University of Florida, Gainesville, FL, USA; ⁴Laboratory of Neuropsychiatry, Department of Neuroscience and Pharmacology, University of Copenhagen, Copenhagen, Denmark; ⁵Psychiatric Centre Copenhagen, University Hospital Copenhagen, Copenhagen, Denmark; ⁶Departamento de Ciencias Básicas, Universidad de Viña del Mar, Viña del Mar, Chile; ⁷Department of Psychiatry, Vanderbilt University Medical Center, Nashville, TN, USA; ⁸Department of Molecular Physiology and Biophysics, Vanderbilt University Medical Center, Nashville, TN, USA; ⁹Department of Public Health, University of Copenhagen, Copenhagen, Denmark; ¹⁰Department of Biomedical Sciences and Center for Brain Repair, Florida State University, Tallahassee, FL, USA and ¹¹Department of Hearing and Speech Sciences, Vanderbilt University Medical Center, Nashville, TN, USA. Correspondence: IA Reddy, Neuroscience Program, Vanderbilt University School of Medicine, 7124 MRB3, 465 21st Avenue South, Nashville, TN 37232, USA or Dr JA Pino, Department of Pharmacology and Therapeutics, College of Medicine, University of Florida, 1200 Newell Drive, ARB R5-237, Gainesville, FL 32610, USA or Dr A Galli, Department of Molecular Physiology and Biophysics, Vanderbilt University Medical Center, 7124 MRB3, 465 21st Avenue South, Nashville, TN 37232, USA.

E-mail: india.a.reddy@vanderbilt.edu or josepino@ufl.edu or aurelio.galli@vanderbilt.edu

¹²These authors contributed equally to this work.

¹³These authors contributed equally to this work.

Received 18 December 2015; revised 19 February 2016; accepted 30 March 2016

at DA nodes exhibiting GLP-1R signaling. One such node is found within the forebrain lateral septum (LS). The LS possesses a high concentration of GLP-1Rs and contains DA projections.¹⁰ In addition, the LS has historically been linked to reward; it was identified by Olds and Milner²⁰ as a potent site of electrical self-stimulation in rats.²⁰ Since then, several studies have found that the LS is fundamental to the rewarding properties of drugs of abuse.^{3,21–23} Most notably, the Aston-Jones group has found that the LS is an important relay center between the hippocampus and the ventral tegmental area (VTA) for information about cocaine–context associations and that the LS is necessary for the formation of cocaine conditioned place preference (CPP).^{22,23}

Recently, Harasta *et al.*³ found that endogenous signaling through the GLP-1R in the LS acts to dampen cocaine-induced locomotion and cocaine CPP, both considered DA-associated behaviors.³ In the current study, we sought to determine the mechanism by which GLP-1R stimulation modulates septal DA homeostasis and the actions of cocaine. Cocaine blocks DA reuptake via the DA transporter (DAT), resulting in high levels of synaptic DA. Here we demonstrate that GLP-1R stimulation inhibits the ability of cocaine to increase extracellular DA levels. This phenomenon is associated with increased DAT surface expression and function mediated by a reduction in endocannabinoid and arachidonic acid (AA) levels in the LS. These findings reveal a novel mechanism of GLP-1R action in brain and provide a more comprehensive understanding of how emerging GLP-1R-targeted therapies affect signaling in the brain.

MATERIALS AND METHODS

Animals

Male NMRI mice (Taconic, Lille Skensved, Denmark) were used for microdialysis and c-fos experiments.⁴ Sprague Dawley rats, weighing 320–345 g, were also used for the study (Taconic). All other *in vivo* experiments used adult male C57BL/6 mice from Jackson Laboratories (Farmington, CT, USA) or bred internally at the Vanderbilt University (Nashville, TN, USA). All the animals were kept at room temperature in a 12 h light/dark cycle with free access to food and water. All the experiments were performed during the light cycle. For immunohistochemical characterization of GLP-1R localization, bacterial artificial chromosome transgenic mice containing a fluorescent reporter expressed in GLP-1R-expressing cells were generated as described in Supplementary Information. All the experiments were in accordance with directives of 'Principles of Laboratory Animal Care' (NIH publication No. 85–23) and approved by either the Danish Experimental Animal Inspectorate and the council of the European Communities or the Vanderbilt Institutional Animal Care and Use Committee.

Drugs and materials

The suppliers for all chemicals not otherwise identified can be found in the Supplementary Information.

Immunohistochemistry for DAT and mApple

The brains from GLP-1R bacterial artificial chromosome transgenic mice were extracted, post-fixed overnight in PFA and sectioned by vibratome (75 μ m). The sections were immunostained and imaged as described in the Supplementary Information.

High-speed chronoamperometry

The slices containing LS (300 μ m) were prepared and chronoamperometry performed as previously described.²⁴ High KCl artificial cerebrospinal fluid (with 30 mM KCl, 97.5 mM NaCl) was applied to the bath for 2 min to induce DA release. The oxidative signal measured in the slices is attributable to DA as the reduction/oxidation charge ratio is in the range 0.6–1.0.

c-fos expression

The procedure for c-fos IHC is as previously described.²⁵ Briefly, the coronal brain sections (15 μ m) were cut through septum using a cryostat. Synthetic

oligonucleotide DNA probes (DNATechnology, Aarhus, Denmark) were used for the visualization of c-fos mRNA by autoradiography. The probe sequence was 5'-CGGGCAGTGGCAGCTCTGGATGCCGCTGCCTTCTCTGACTGC-3'.

In vivo microdialysis in mice

Microdialysis was performed as described previously⁴ with few modifications. The dialysis probe was positioned in LS, anteroposterior: 0.5 mm, mediolateral: 0.3 mm relative to the bregma and dorsoventral: –2.2 mm relative to skull surface.²⁶ The microdialysis probe was perfused at a rate of 0.9 μ l min^{–1} with artificial cerebrospinal fluid. The first two 30-min samples were discarded to obtain stable basal values. Hereafter, two 30-min fractions were collected to establish baseline DA levels. Subsequently, the mice were injected with Ex-4 or vehicle, and three 30-min fractions were collected. The mice were then subjected to local perfusion with cocaine (50 μ M) for 30 min and five 30-min fractions were collected. All the fractions were assayed immediately after collection using high-performance liquid chromatography with electrochemical detection.²⁷

Ex vivo slice protein biotinylation assay

The procedure for biotinylation of live brain slices has been validated and was performed at 28 °C as described previously.²⁸

Ex vivo slice [3H]DA transport assay

The slices were obtained as described above and allowed to recover (\geq 1 h at 28 °C) with continuous oxygenation. Following the recovery, the slices were treated with the drug (that is, GLP-1) for 10 min followed by the application of 50 nM [³H]DA for 10 min with the drug still present at 28 °C. When Ex-9 was used, the slices were pretreated with Ex-9 for 10 min before the addition of drug/vehicle. Total protein was taken, and the samples were processed for protein concentration using a Bio-Rad (Philadelphia, PA, USA) protein assay and spectrometry at 595 nm. Equivalent volumes of the sample were added to 3 ml of scintillation fluid (Ecoscint H, National Diagnostics, Atlanta, GA, USA) and radioactive counts were measured by scintillation counter. [³H]DA was divided by protein and normalized to average control uptake from paired vehicle-treated slices from the same animal. The uptake protocol and DAT specificity were validated in slices treated with DAT blocker GBR-12909 (Sigma Aldrich, St. Louis, MO, USA), which blocked uptake in LS by 58.2% ($t(5) = 11.97$; $P < 0.0001$ by Student's *t*-test; $n = 6$).

2-AG and AA measurements

The mice were injected with Ex-4 or vehicle (intraperitoneally) 30 min before being killed. The mice were rapidly decapitated and the brains were obtained and blocked to obtain DS and LS punches. Punches were quickly placed into Eppendorf tubes on dry ice and stored at –80 °C until use. The samples were homogenized in methanol and centrifuged; water was added to the supernatant for a final ratio of 70:30 methanol:water. Liquid chromatography/mass spectrometry was performed as previously described.²⁹ Following liquid chromatography/mass spectrometry, excess methanol was suctioned off the pellets. The pellets were resuspended and processed for protein concentration using a Bio-Rad protein assay and spectrometry at 595 nm.

Cell culture

Rat pheochromocytoma cells (PC12) were obtained from the American Type Culture Collection (Manassas, VA, USA), and were cultured in Dulbecco's Modified Eagle's medium supplemented with 6% fetal bovine serum (heat inactivated), 6% horse serum (heat inactivated), 1 mM glutamine, 100 U ml^{–1} penicillin and 100 μ g ml^{–1} streptomycin at 37 °C in a humidified 5% CO₂ incubator.³⁰ The PC12 cells overexpressing human DAT fused to GFP (hDAT cells) were stably transfected with the plasmid pEGFP-C2-hDAT using Lipofectamine 2000 and were cultured under the same conditions. Krebs–Henseleit buffer was used (144 mM NaCl, 4.2 mM KCl, 1.6 mM MgCl₂, 1.6 mM KH₂PO₄, 10 mM HEPES, pH 7.4) and Fe³⁺ (197 μ M)/ascorbate (19.7 mM) solutions were prepared in Krebs–Henseleit buffer. In some cases, salicylamine, a γ -KA scavenger, was added to the culture media and preincubated with the cells for 1 h at 37 °C before further treatments. The cell viability was measured using Trypan blue staining.

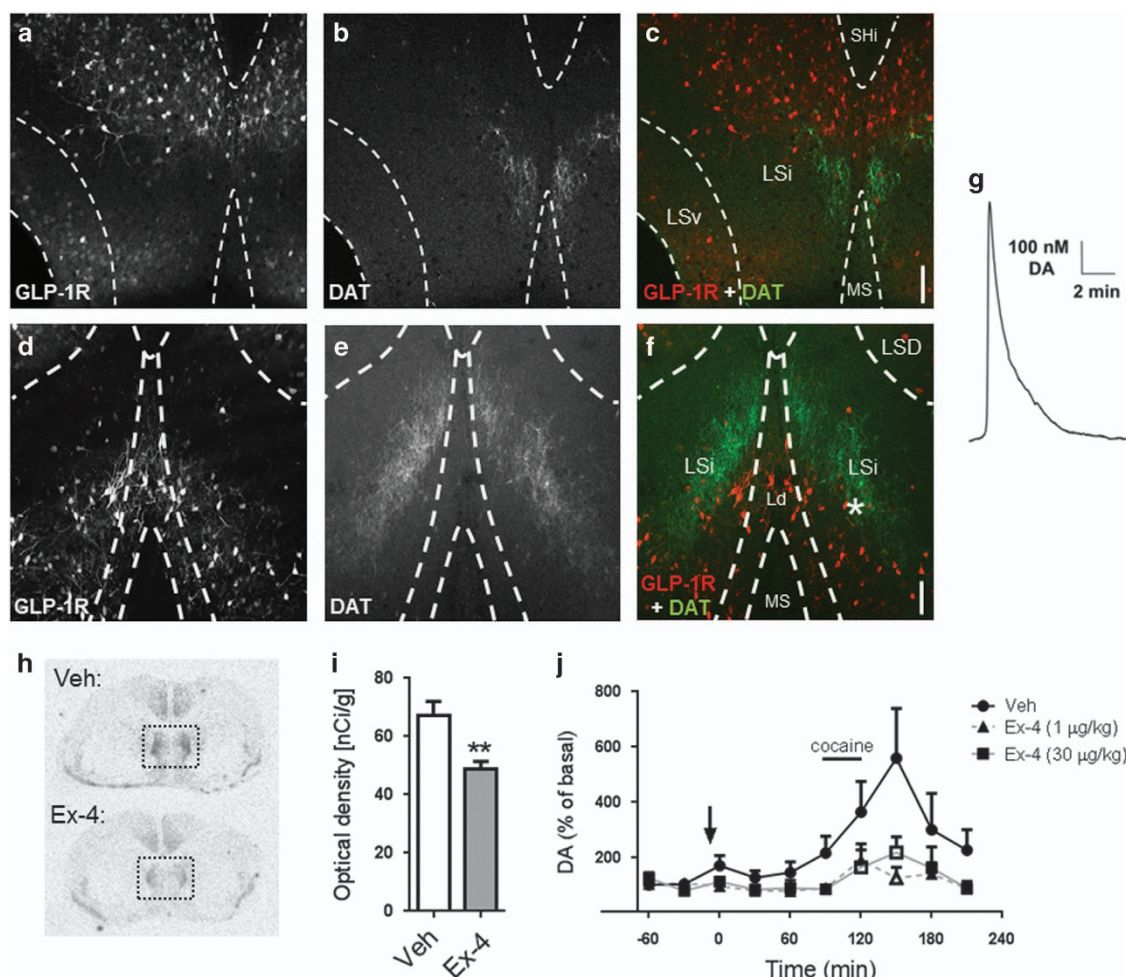


Figure 1. The glucagon-like peptide 1 receptor (GLP-1R) is highly expressed in the lateral septum (LS) where GLP-1R agonists block cocaine-induced dopamine (DA) *in vivo*. (**a–c**) Cells expressing the GLP-1R (white in **a**, red in **c**) and terminals expressing dopamine transporter (DAT; white in **b**, green in **c**) in rostral LS (GLP-1R in **a**, DAT in **b**, merge in **c**). Confocal images in z stack through 13 planes taken with a $\times 10$ objective. (**d–f**) Cells expressing the GLP-1R (white in **d**, red in **f**) and terminals expressing DAT (white in **e**, green in **f**) in caudal LS (GLP-1R in **d**, DAT in **e**, merge in **f**). Confocal images in z stack through 14 planes taken with a $\times 10$ objective. (**g**) DA release induced by 30 mM KCl (representative of $n=3$) in section from the caudal LS. Approximate site of recording is demarcated by * in **f**. Ld, laterodorsal tegmental nucleus; LSd, dorsal LS; LSi, intermediate LS; LSv, ventral LS; MS, medial septum; SHi, septohippocampal nucleus. Dotted lines delineate region boundaries.²⁶ Scale bars, 100 μ m. (**h**) Representative c-fos expression in the LS 30 min following vehicle (top) or Ex-4 (30 μ g kg⁻¹, intraperitoneally, bottom) injection. Dotted box includes the LS. (**i**) Quantification of optical density analysis of c-fos autoradiographs in LS ($t(14)=3.26$; $**P<0.01$ by Student's *t*-test; $n=8$). (**j**) Cocaine (50 μ M) greatly increased septal DA levels in mice pretreated with saline (intraperitoneally, solid circles). This cocaine-induced DA increase is significantly diminished in mice pretreated with Ex-4 (1 μ g kg⁻¹ intraperitoneally, solid triangles; 30 μ g kg⁻¹ intraperitoneally, solid squares). Extracellular concentrations of DA are expressed as the percentage of basal levels in two fractions collected before the intervention; significant analysis of variance. Open symbols indicate significance by *post hoc* test where $P<0.001$ at 150 min and $P<0.05$ at 120 min; $n=5$ –6 per group.

PC12 transport assays

The DAT-mediated uptake of DA in PC12 cells overexpressing a GFP-tagged DAT (hDAT) has been described previously.³¹

Cell surface biotinylation in hDAT cells

The cell surface biotinylation was performed as described by Egaña *et al.*³¹ with some modifications.

Immunoprecipitations

Immunoprecipitations were performed using 1 mg total protein. To immunoprecipitate DAT-GFP, the cell homogenates were incubated overnight at 4 °C with a monoclonal anti-GFP antibody (G-6539, 1:100), followed by the addition of 50 μ l of a mixture of protein A and protein G Sepharose beads (2 h at 4 °C in rotatory shaker). The immunoprecipitated proteins were recovered by centrifugation at 14 000 *g* for 2 min (4 °C),

washed with ice-cold buffer D, and resuspended in protein sample buffer containing β ME. The proteins were separated by SDS-polyacrylamide gel electrophoresis and transferred to PVDF membranes before incubation with an antibody against γ -KA-lysyl adduct (neuroketals antibody, C-17, 1:400) and anti-DAT (MAB369, 1:1000).

Analyses

The data are presented as means \pm s.e.m. The data were examined with Student's *t*-test for comparisons of only two data sets and one-way or two-way analysis of variance for comparisons of multiple groups, followed by Tukey's- or Bonferroni-corrected comparisons. In *ex vivo* [³H]DA uptake experiments, samples with low protein content ($<6 \mu$ g ml⁻¹) were excluded from the analysis ($n=1$). Optical density of bands was determined using Image J software. The statistical analysis was performed with GraphPad Prism software, version 5.02 (GraphPad Software, San Diego, CA, USA). A *P*-value <0.05 defined the statistical significance.

The methods for Supplementary Figures can be found in the Supplementary Information.

RESULTS

GLP-1R-expressing neurons are juxtaposed to DA terminals in the LS

The GLP-1R is highly expressed within the LS,¹⁰ a brain region in which DAT-expressing DA terminals reside.³² Here, to the best of our knowledge, we first describe their proximity and anatomical distribution in this region (Figure 1). To this end, we generated a transgenic mouse expressing a bacterial artificial chromosome for the protein mApple under the control of the promoter for the GLP-1R. The mApple signal was amplified by immunostaining (Figures 1a, c, d and f) and DAT was labeled in parallel (Figures 1b, c, e and f). Within the rostral LS (Figures 1a–c), the DA terminals are found medially in the intermediate LS subregion (LSi), directly adjacent to GLP-1R-expressing cells found mostly in the dorsal LSi. We observed visible overlap between these cell bodies/projections and DA terminals. Within the caudal LS (Figures 1d–f), there is similar evidence for this anatomical overlap. The DA terminals are labeled as two strips extending dorsomedially to ventrolaterally in the LSi. The GLP-1R-expressing cells are also found in the caudal LSi, but the cell bodies additionally extend further into the more medial laterodorsal tegmental area. Importantly, we show that DA terminals within this region release DA: superfusing LS

slices with an artificial cerebrospinal fluid solution containing high $[K^+]$ causes DA release as recorded by high-speed chronoamperometry (Figure 1g; approximate electrode placement is denoted by * in Figure 1f). The use of mApple for identifying GLP-1R-expressing neurons was validated by *in situ* hybridization (Supplementary Figure 1).

Systemic administration of a GLP-1R agonist reduces cocaine-induced DA elevation and c-fos expression in the LS

We next tested whether a therapeutically relevant administration (that is, systemic administration) of Ex-4 was capable of altering neuronal activity in the LS. We first evaluated the effect of Ex-4 on the activation of septal neurons by measuring c-fos expression. Ex-4 administration (intraperitoneally) 30 min before killing decreased basal c-fos gene expression by *in situ* hybridization relative to vehicle-treated mice (Figures 1h and i). This result indicates that systemic administration of Ex-4 alters neuronal activity in the LS.

The psychogenic and addictive properties of cocaine are mediated, at least in part, through the blockade of DAT-mediated DA reuptake and an increase in extracellular DA.^{33,34} Therefore, signaling pathways able to modulate or diminish this DA increase offer enormous therapeutic potential. We determined the effect of systemic Ex-4 on local cocaine-induced changes in DA homeostasis *in vivo* within the LS, as measured by microdialysis in freely moving mice. The perfusion of cocaine

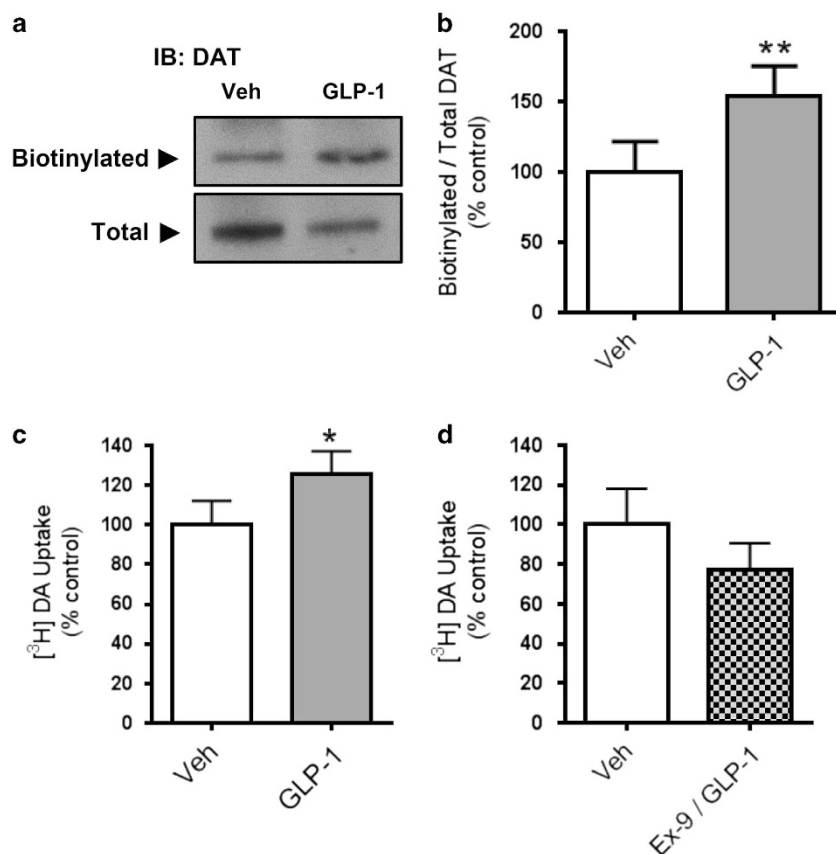


Figure 2. Local activation of the glucagon-like peptide 1 receptor (GLP-1R) promotes septal dopamine transporter (DAT) membrane expression and $[^3H]$ DA uptake. (a) Representative immunoblot of surface and total DAT following slice treatment with vehicle (artificial cerebrospinal fluid, aCSF) or 1 nM GLP-1. (b) Ratio of DAT surface expression in GLP-1-treated *ex vivo* septal slices as percentage of average vehicle values ($t(3) = 10.12$; $**P < 0.01$ by Student's *t*-test; $n = 4$). The slices were treated with 1 nM GLP-1 for 20 min. (c) $[^3H]$ DA uptake in the LS from *ex vivo* slice preparation following 20 min treatment with vehicle (aCSF) or 10 nM GLP-1. Uptake was significantly elevated ($t(4) = 2.35$; $*P < 0.05$ by Student's *t*-test; $n = 5$). (d) Pretreatment with 100 nM Ex-9 for 10 min blocks the increase in $[^3H]$ DA uptake following treatment with 10 nM GLP-1 ($t(3) = 1.047$; $P = 0.19$ by Student's *t*-test; $n = 4$).

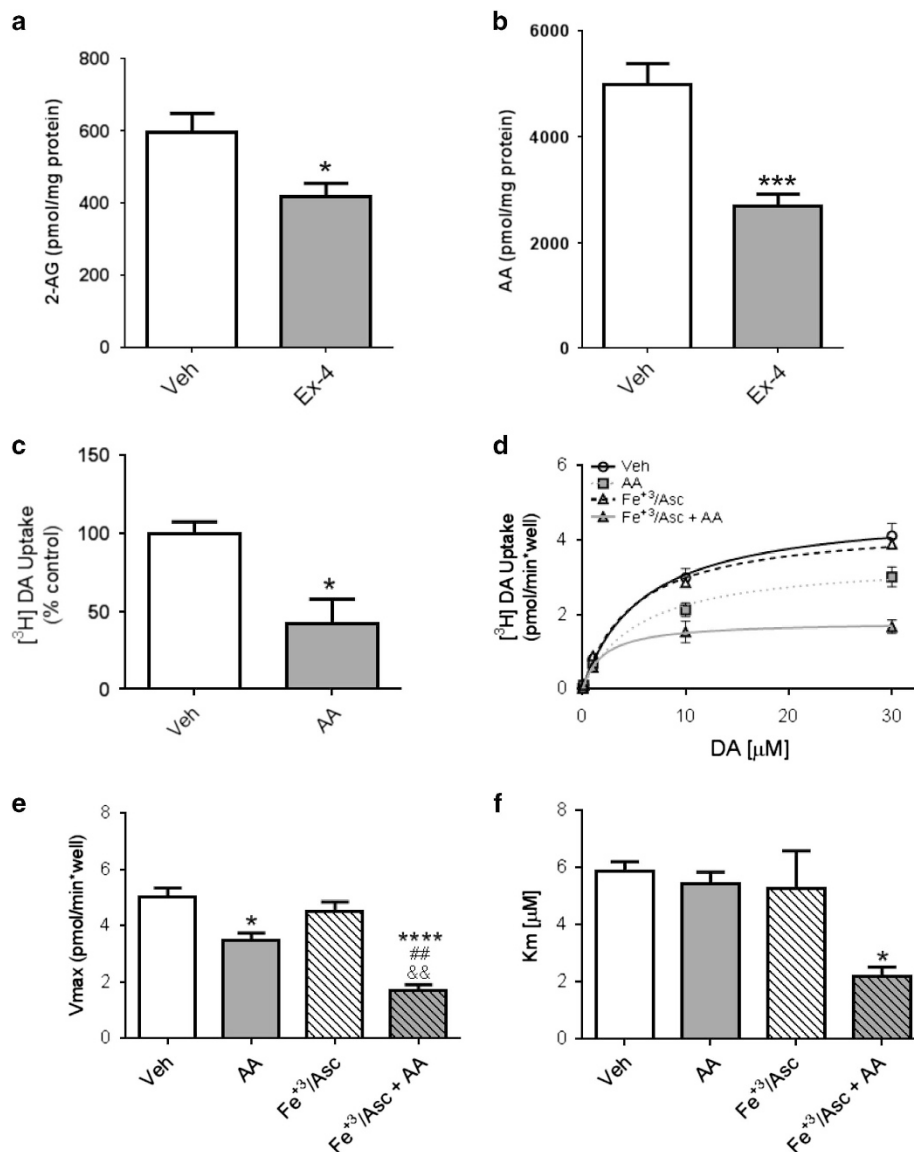


Figure 3. Treatment of mice with Ex-4 reduces septal arachidonic acid (AA) levels and AA is a strong modulator of dopamine transporter (DAT) function in lateral septum (LS). (a) Ex-4 ($2.4 \mu\text{g kg}^{-1}$, intraperitoneally) administered *in vivo* 30 min before killing resulted in lower levels of septal 2-AG ($t(11) = 2.62$; $*P < 0.05$ by Student's *t*-test; $n = 6-7$). (b) Exenatide (Ex-4; $2.4 \mu\text{g kg}^{-1}$, intraperitoneally) administered 30 min before death reduces levels of septal AA ($t(10) = 5.018$; $***P < 0.001$ by Student's *t*-test; $n = 6$). (c) Eighty micromolar AA applied for 20 min to slices containing the LS reduces $[^3\text{H}]\text{DA}$ uptake to 42% of vehicle (dimethyl sulfoxide)-treated slices ($t(3) = 2.59$; $*P < 0.05$ by Student's *t*-test; $n = 4$). (d) $[^3\text{H}]\text{DA}$ uptake kinetics in human DAT (hDAT) cells treated either with vehicle (open circles) or $\text{Fe}^{+3}/\text{Asc}$ (open triangles) or with $40 \mu\text{M}$ AA for 1 h at 37°C in absence (gray squares) or presence of $\text{Fe}^{+3}/\text{Asc}$ (gray triangles). The kinetic parameters (e) V_{max} and (f) K_{m} were obtained from the Michaelis-Menten fit to the influx of $[^3\text{H}]\text{DA}$. Each value represents mean \pm s.e.m. of \geq three independent experiments. $*P < 0.05$, $****P < 0.001$, $##P < 0.01$ and $\&\&P < 0.01$ indicate significant differences between vehicle (Veh) and AA, Veh and $\text{Fe}^{+3}/\text{Asc} + \text{AA}$, AA and $\text{Fe}^{+3}/\text{Asc} + \text{AA}$ and $\text{Fe}^{+3}/\text{Asc}$ and $\text{Fe}^{+3}/\text{Asc} + \text{AA}$, respectively. Significant analysis of variance followed by *post hoc* tests.

through the microdialysis probe increased septal DA ~ 5 -fold (Figure 1j; $F(9,49) = 2.73$, $P = 0.014$ by analysis of variance). Systemic pretreatment with Ex-4 (intraperitoneally) 90 min prior impaired the cocaine's ability to significantly increase extracellular DA. These results were paralleled in rats (Supplementary Figure 2A), demonstrating across species that GLP-1R activation diminishes the cocaine's ability to increase extracellular DA in the LS.

Local GLP-1R signaling blocks cocaine-induced elevation in DA, promotes septal DAT membrane expression and increases DA uptake

We next sought to determine whether local GLP-1R activation could account for observed systemic effects of Ex-4 on the LS. Ex-4

or vehicle was perfused through the microdialysis probe concurrently with cocaine (Supplementary Figure 2B). The local administration of Ex-4 impaired the ability of cocaine to increase extracellular DA levels. This finding further highlights the role of septal GLP-1Rs in modulating cocaine's ability to enhance DA function.

Multiple mechanisms could explain how local GLP-1R signaling impairs cocaine-induced increases in extracellular DA in the LS. However, DAT-mediated DA reuptake is the primary mechanism regulating extracellular DA levels,³⁵ a process dynamically regulated by DAT plasma membrane expression.³⁶⁻⁴⁰ Notably, DAT expression is inversely proportional to the ability of cocaine to cause its behavioral effects.^{41,42} Therefore, we hypothesized that GLP-1R signaling regulates DA homeostasis in the LS, as well

as cocaine's ability to increase extracellular DA, by controlling DAT surface expression. In support of this mechanism, GLP-1 application increased surface levels of DAT as measured by LS slice biotinylation⁴³ (Figures 2a and b). To determine whether the elevation of DAT surface expression translated to functional changes in DAT activity, we measured uptake of [³H]DA in septal slices treated with GLP-1. GLP-1 significantly increased DA uptake (Figure 2c). This increase was specific to GLP-1R signaling, as demonstrated by its blockade by the selective GLP-1R antagonist, exendin-(9–39)-amide (Ex-9; Figure 2d).⁴⁴ Ex-9 alone had no significant effect ($91\% \pm 13\%$; $t(3) = 0.6749$; $P = 0.55$ by Student's *t*-test; $n = 4$). These studies were performed in slices in which only the local circuits are intact; therefore, we can assume that our observations were the result of local GLP-1R stimulation and not the result of feed-forward circuit-level changes. Together, these data demonstrate that GLP-1R signaling increases both DAT expression at the plasma membrane and DA uptake, suggesting that GLP-1R signaling might regulate cocaine actions in the LS through DAT-dependent mechanisms.

Ex-4 reduces levels of the retrograde messenger, 2-AG, and lowers levels of AA in the LS

Our findings thus far suggest that septal GLP-1R agonism affects DAT expression and function locally. However, the GLP-1R is predominantly expressed postsynaptically (Figure 1 and Supplementary Figure 1), whereas the DAT is located on presynaptic DA terminals (Figure 1). This raised the possibility that GLP-1R signaling regulates DAT function through a retrograde signal. 2-AG is a well-established endogenous cannabinoid retrograde messenger whose signaling has been shown to modify reward and feeding.^{45–48} Of note, cannabinoid CB1 receptor antagonists, which decrease 2-AG signaling, have been shown to decrease cocaine reward.⁴⁹ 2-AG is synthesized postsynaptically, but degraded into free AA in presynaptic axon terminals. Indeed, 2-AG hydrolysis via monoacylglycerol lipase is the primary mechanism for free AA generation in the central nervous system.⁵⁰ Importantly, AA impairs DAT-mediated DA uptake.^{51–53} Thus we sought to determine whether GLP-1R activation modulates 2-AG-AA signaling. To this end, mice were injected with Ex-4 (intraperitoneally) 30 min prior to death, and the LS was punched and analyzed by mass spectrometry for 2-AG and free AA levels.⁵⁰ We found that Ex-4 significantly reduced both 2-AG and AA levels in the LS (Figures 3a and b), pointing towards reduced endocannabinoid metabolism in the LS. This phenomenon was not observed in the dorsal striatum (DS), where DAT is expressed in high quantities but GLP-1R-expressing cells are only sparsely distributed (Supplementary Figure 3). These data demonstrate region-specific regulation by GLP-1R signaling of 2-AG levels and its metabolism.

AA reduces DA uptake and DAT surface expression

Among its functions as a signaling molecule, AA has been previously shown to impair DAT-mediated DA uptake.^{51–53} Consistent with findings from heterologous cell lines and striatal synaptosomes,^{51–53} we first demonstrated that AA application to LS slices significantly reduced DA uptake (Figure 3c).

Although we have established that AA inhibits DAT function in the LS, the mechanism(s) responsible for this effect are unknown. To define these molecular mechanisms, we adopted PC12 cells stably transfected with the human DAT (hDAT cells). The PC12 cells contain vesicles capable of neurotransmitter release.⁵⁴ These vesicles hold catecholamines (mostly DA) and as such they were suitable for our molecular studies. The incubation of hDAT cells with AA alone decreased the DAT maximal velocity (*V*_{max}) to 69% of control condition (Figures 3d and e). Notably, psychostimulants are known to induce oxidative stress,^{55–57} whereas GLP-1R signaling, which reduces AA levels, is known to reduce it.⁵⁸ Thus,

we further explored mechanistically the interplay between oxidative stress and AA levels in terms of DAT function. Here, we treated hDAT cells with AA along with an oxidizing solution containing Fe^{+3} ($197 \mu\text{M}$) plus ascorbate (19.7 mM , $\text{Fe}^{+3}/\text{Asc}$; Figures 3d–f). Importantly, $\text{Fe}^{+3}/\text{Asc}$ induces the lipid peroxidation of AA, a process that produces reactive species capable of modifying protein structure and function.^{59–62} Notably, DAT is highly susceptible to oxidant injury.^{63–65} We thus posited that AA might exhibit greater inhibitory effects under oxidative conditions. Indeed, a greater decrease in *V*_{max} to 34% of control was obtained when AA was applied in the presence of $\text{Fe}^{+3}/\text{Asc}$ (Figures 3d and e; See also Supplementary Figure 4 for validation of oxidizing conditions and cell viability). However, when hDAT cells were incubated with $\text{Fe}^{+3}/\text{Asc}$ alone, there were no significant changes in DAT activity (Figures 3d and e). These results show that in the presence of AA, there is a significant reduction in DAT function under both oxidizing and non-oxidizing conditions. Notably, a greater loss of function was observed under oxidizing conditions, which also affects DAT's apparent affinity for DA (Figure 3f).

DAT plasma membrane trafficking is a key regulator of DA transport capacity.^{66,67} Therefore, the effect of AA on DAT function could be explained by the changes in the cell surface expression. Our results indicate that in hDAT cells, AA, under both oxidative and non-oxidative conditions, decreases significantly and to the same extent plasma membrane DAT (Figures 4a and b) as determined by biotinylation. Therefore, the decrease in DAT function induced by AA alone parallels the decreased transport

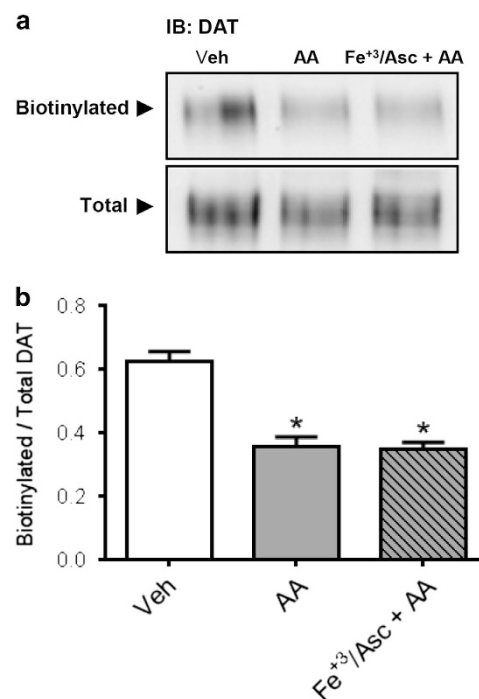


Figure 4. Arachidonic acid (AA) decreases dopamine transporter (DAT) cell surface expression in human DAT (hDAT) cells. **(a)** Cell surface biotinylation and immunoblots for DAT using anti-DAT in extracts from hDAT cells treated with AA ($40 \mu\text{M}$) for 1 h at 37°C in the absence or presence of $\text{Fe}^{+3}/\text{Asc}$. **(b)** Results expressed as the ratio of optical density between biotinylated (surface) and total DAT signals for each experimental condition. Each value represents mean \pm s.e.m. of \geq three independent experiments. * $P < 0.05$ indicates significant differences with respect to vehicle condition (0.1% ethanol in Krebs–Henseleit buffer). Significant analysis of variance followed by *post hoc* tests.

capacity induced by AA (Figure 3). These data also point to additional mechanisms promoted in terms of DAT function by oxidative stress.

AA oxidative product, γ -KA, forms a complex with DAT and regulates its function

The oxidation of AA (mediated by free radicals and other reactive oxygen/nitrogen species) yields a series of prostaglandin H_2 isomers that rearrange to their corresponding γ -ketoaldehydes (γ -KAs), also named isoketals. These γ -KAs react rapidly with lysine residues forming stable adducts, which can modulate the activity of proteins.^{59–62} At the plasma membrane, DAT localizes to microdomains including lipid rafts. Lipid rafts are regions highly enriched in phospholipids containing AA, and DAT localization to lipid rafts has been associated with regulation of DAT function and trafficking.^{68–70} Therefore, we determined whether posttranslational modifications of DAT by γ -KAs are associated with changes in DAT function.

To determine whether DAT is a target of AA oxidative products (for example, γ -KAs) and whether this interaction is relevant for its function, we conducted experiments using synthetic isoketals (IsoK). The hDAT cells were incubated with IsoK or vehicle for 1 h at 37°C and cell extracts were used for immunoprecipitation experiments. We observed a significant increase (78%) in the amount of isoketal adducts that co-immunoprecipitated with DAT compared with the control condition (Figures 5a and b). Importantly, incubation with IsoK resulted in a 59% decrease in function compared with vehicle control (Figures 5c and d), with no change in K_m (Figure 5e). Furthermore, we evaluated the effects of salicylamine, a selective scavenger of γ -KA, on DA uptake (Figure 5f). In the presence of salicylamine, there were no significant changes in V_{max} (Figure 5g) or K_m (Figure 5h) when cells were treated with AA under non-oxidative or oxidative conditions with respect to the control condition. This is in contrast to our earlier results in the absence of salicylamine (Figures 3d and e), suggesting that the ability to form γ -KA-DAT adducts is necessary for AA to impair DAT function. Importantly, our findings demonstrate that DAT is a target of AA oxidative products, and that this interaction has profound functional implications.

DISCUSSION

Since the discovery that the LS is a potent site of electrical self-stimulation in both rodents and humans,^{20,71} it has historically received relatively little attention as a reward center. Recent studies, however, suggest that it integrates output from traditional reward areas including the VTA and lateral hypothalamus.^{22,23} In this context, the LS has been described as a relay node from the hippocampus (area CA3) to the VTA, and has been suggested to have a pivotal role in encoding context–reward associations for cocaine.²² Notably, functional inactivation of the rostral LS abolished cocaine CPP.²³ These reports and others^{21,72,73} characterize the LS as a brain region critically involved in coordinating the activity of multiple reward centers and reinforce its importance in cocaine reward.

GLP-1Rs are highly expressed in the LS and their signaling has been shown to attenuate the locomotor response to the psychostimulant D -amphetamine,¹ to reduce cocaine CPP,^{14,16} and to block self-administration for cocaine in rodents.⁴ Therefore it is conceivable that their signaling within the LS may modulate cocaine CPP and reward. To support this hypothesis, a recent study shows that GLP-1R expression in the LS controls cocaine CPP and locomotion.³ However, the mechanism by which GLP-1R signaling fine tunes DA homeostasis and cocaine reward in the LS remains elusive.

Cocaine, by targeting the DAT, increases extracellular DA levels, which leads to cocaine's behavioral actions. DAT expression level

is an important factor in determining the effects of cocaine, likely through effects on basal DA tone. For example, extended access to cocaine, which results in escalating cocaine intake, causes lower expression of striatal DAT and reduced DA clearance in rats.^{74–78} The involvement of DAT expression in cocaine's behavioral actions is further supported by the finding that hyperlocomotor responsiveness to cocaine is significantly enhanced in two different mouse models expressing low levels of DAT,^{41,42} likely resulting from reduced basal DAT-mediated DA uptake.⁴¹ In addition, experiments from heterologous cell lines show that cocaine is more potent in inhibiting DA uptake in cells expressing lower amounts of DAT.⁷⁹ Notably, a high percentage of striatal DAT (at least 47%) needs to be occupied by cocaine in addicts before they report subjective effects of the drug,⁸⁰ implying that modulating DAT surface expression alters the reinforcing effects of cocaine in humans. However, it is clear to us that other mechanisms in addition to DAT occupancy participate in the behavioral actions of cocaine. These include altered firing activity of dopaminergic neurons and/or other mechanisms that modify DA release. These kinds of mechanisms have been defined for other drugs of abuse, such as morphine, and may be contributing in parallel to altered cocaine reward.⁸¹

In this study, we hypothesized that GLP-1R signaling controls, at least in part, cocaine actions by regulating DAT expression/function in the LS. We find that GLP-1R agonism enhances membrane expression of DAT. This increase translates into an increase in transport capacity, and is paralleled by reduced ability of cocaine to increase extracellular DA levels. Our data suggest that increasing the amount of DAT expressed at the cell surface may reduce the extent to which cocaine is effective at increasing extracellular DA within the LS. These data offer an additional mechanism for GLP-1R signaling regulation of the reinforcing and rewarding properties of cocaine without precluding the possibility that GLP-1R signaling may also affect DA release and firing properties of VTA neurons.

Here we find that stimulating the GLP-1R through administration of Ex-4 in a therapeutically relevant manner (systemic administration) reduces septal 2-AG levels. One possibility is that the decrease in 2-AG is due to GLP-1R-mediated stimulation of PI3K,⁸² or inhibition of PTEN,⁸³ which will decrease the levels of plasma membrane PIP_2 , one of the precursors for 2-AG synthesis.⁸⁴ We show that in the LS GLP-1R is located postsynaptically. Indeed, 2-AG diffuses across synapses. Therefore, we believe that this loss of 2-AG is causal for the observed decrease in LS AA content as AA is primarily produced in the brain through the presynaptic conversion from 2-AG.⁵⁰ This reduction is important as AA has been shown to inhibit DA uptake in *ex vivo* and *in vitro* preparations,^{51–53} and that psychostimulants such as amphetamine cause release of AA by activation of PLA_2 .⁸⁵ Consistent with AA-mediated inhibition of septal DA uptake, we show that GLP-1R-mediated reduction in AA signaling is associated with an increase in DA uptake in LS slices. This increase in DAT function stems at least in part from augmented DAT surface expression, pointing to DAT trafficking as the underlying mechanism by which GLP-1R signaling and AA levels controls DA homeostasis in the LS, as depicted by our schematic model (Supplementary Figure 5).

Of note, AA is known to facilitate a pro-inflammatory state in the brain,⁸⁶ GLP-1 analogs, on the other hand, possess both anti-inflammatory and neuroprotective effects.^{58,87,88} GLP-1R stimulation has demonstrated positive effects in rodent models of Alzheimer's disease as well as Parkinson's disease (a degenerative disorder of dopaminergic neurons).^{88–90} Furthermore, psychostimulants themselves enhance AA levels and may exacerbate oxidative stress in the brain,^{55–57,85} possibly increasing the levels of harmful AA metabolites. On the basis of our findings, GLP-1R signaling may oppose the effects of psychostimulants by affecting levels of AA as well as oxidative stress.

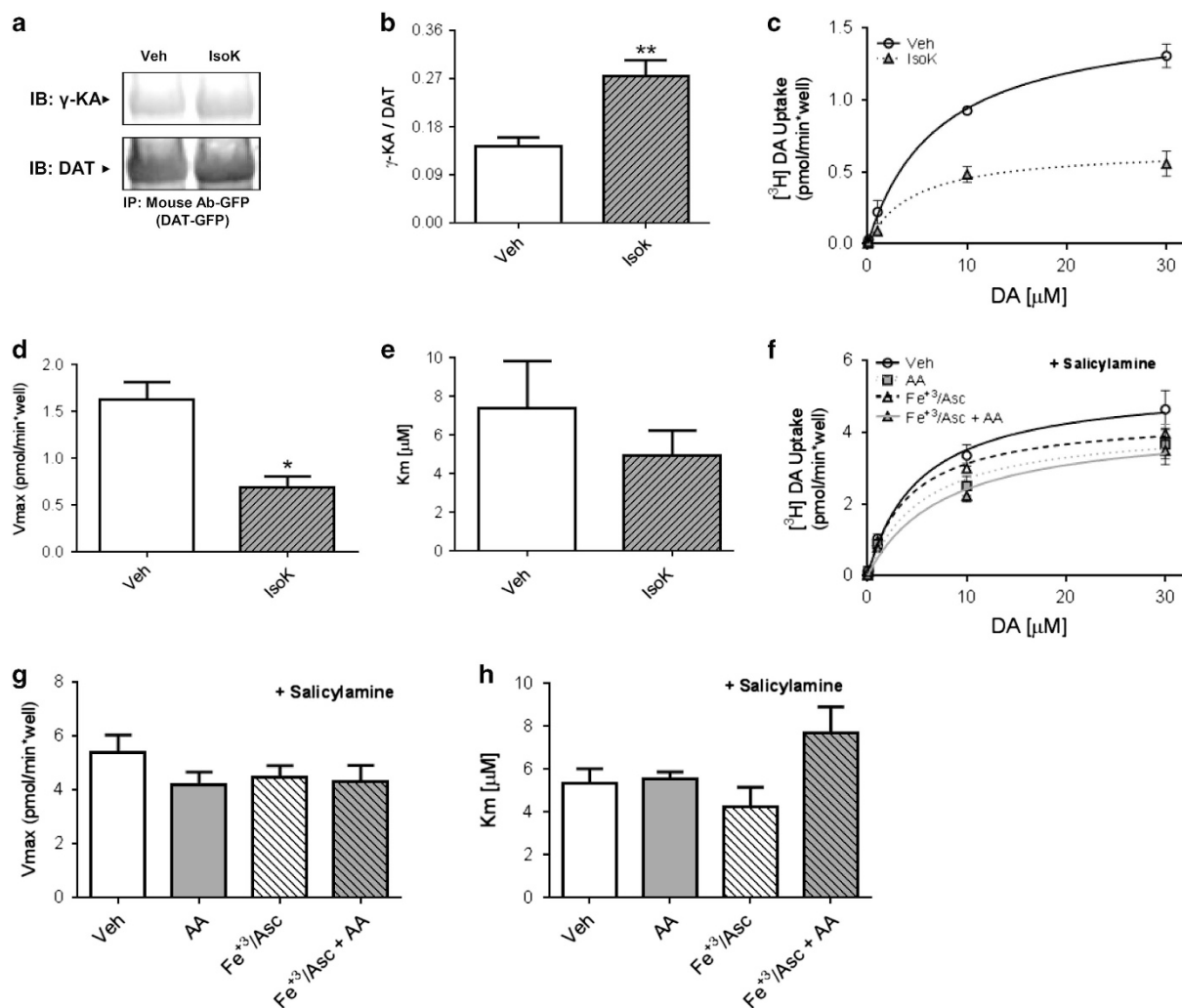


Figure 5. Synthetic isoketals form adducts with human dopamine transporter (hDAT) and decrease its function. **(a)** Immunoblots with anti- γ -KA protein adduct and anti-DAT antibodies using green fluorescent protein (GFP)-DAT immunoprecipitates from hDAT cells treated with synthetic isoketals (1 μM) for 1 h at 37 $^{\circ}\text{C}$. **(b)** Quantification of immunoprecipitates as a ratio of γ -KA:DAT. Each value represents mean \pm s.e.m. of \geq four independent experiments ($t(6) = 3.94$; $**P < 0.01$ by Student's t -test; $n = 4$). **(c)** Uptake of $[^3\text{H}]$ DA in hDAT cells treated with vehicle (open circles) or with 1 μM synthetic isoketals (gray triangles) for 1 h at 37 $^{\circ}\text{C}$. The kinetic parameters **(d)** Vmax and **(e)** Km were obtained from the Michaelis–Menten fit to $[^3\text{H}]$ DA uptake. Each value represents mean \pm s.e.m. of three independent experiments (Vmax: $t(4) = 4.21$; $*P < 0.05$ by Student's t -test; $n = 3$; Km: $t(4) = 0.88$; $*P = 0.43$ by Student's t -test). **(f)** Influx of $[^3\text{H}]$ DA in hDAT cells pretreated with salicylamine (0.5 mM) and then treated with vehicle (open circles, 0.1% ethanol in Krebs–Henseleit buffer), $\text{Fe}^{+3}/\text{Asc}$ (open triangles) or with 40 μM AA for 1 h at 37 $^{\circ}\text{C}$ in the absence (gray squares) or presence of $\text{Fe}^{+3}/\text{Asc}$ (gray triangles). The kinetic parameters **(g)** Vmax and **(h)** Km were obtained from the Michaelis–Menten fit to the influx of $[^3\text{H}]$ DA. Each value represents mean \pm s.e.m. of \geq three independent experiments. No significant differences were observed between the groups. The statistical analysis was performed with analysis of variance. AA, arachidonic acid; Veh, vehicle.

In this study, we provide biochemical and functional evidence supporting the notion that AA regulates DAT function by regulating DAT trafficking. We believe that the increase in DAT surface expression promoted by GLP-1R signaling represents a mechanism by which this neuropeptide controls both cocaine-induced increase in LS DA as well as cocaine actions. This AA-mediated mechanism is enhanced by peroxidation of AA leading to the formation of AA metabolites such as γ -KA. The treatment of hDAT cells with AA under conditions favoring lipid peroxidation significantly decreased DAT surface expression and transport capacity; the latter effect was also demonstrated with synthetic isoketals. These results are consistent with the known ability of isoketals to impair the function of plasma membrane proteins.⁹¹ Interestingly, AA alone was also able to significantly reduce DAT function. However, this reduction was smaller than that obtained

under conditions favoring lipid peroxidation or in the presence of isoketals. These results provide a mechanism for the results reported by Chen *et al.*⁵² and Zhang and Reith,⁵³ wherein the activity of DAT expressed in heterologous systems was reduced by AA.^{52,53} They also mechanistically support the notion that GLP-1R signaling regulates DA homeostasis in the LS by decreasing AA levels. How exactly AA and its metabolites control DAT function and trafficking remains elusive. However, we hypothesize that covalent interactions of AA metabolites with specific lysine residues on the DAT support these actions.⁵⁹ Notably, we were able to demonstrate a physical interaction between γ -KA and DAT by immunoprecipitation.

In summary, we have shown that GLP-1R agonism increases DAT function and membrane expression, decreases cocaine-induced increases in extracellular DA, and reduces endocannabinoid and AA

signaling in the LS. This decrease is important as cocaine has been shown to increase 2-AG tone in the brain.⁹² This suggests that other brain centers targeted by cocaine and expressing the GLP-1R, albeit at lower levels, may exhibit a similar mechanism of reward modulation. These brain regions include the nucleus accumbens and VTA, which have been identified as targets of Ex-4 actions on brain reward.^{11–13,93,94} Nevertheless, this mechanism has still to be validated outside the LS. Our study points to septal GLP-1R as a potential novel target for the treatment of drug abuse. Targeting GLP-1R signaling represents an enormous translational opportunity as GLP-1 analogs are already available for clinical use.

CONFLICT OF INTEREST

SP has an active research contract with Lundbeck Pharmaceuticals; however, the work presented in the manuscript was supported entirely by the grants named above and Vanderbilt University. The remaining authors declare no conflict of interest.

ACKNOWLEDGMENTS

Funding was provided by NIH grants DA035263 to AG, DA035588 to AG and GDS, DC012527 to TAH, DA021213 to GET, MH100096 to SP, MH106192 to RJ, and DA036940 to IAR; CONICYT doctoral fellowship grant to JAP (21080629 and 24100103); FONDECYT grant (1140758 and 1110267) to JGR; PUCV-VRIEA grants to JGR and JAP; T32GM007347 from the NIGMS for the Vanderbilt MSTP; and The Ivan Nielsen Foundation. The experiments were performed, in part, through the use of the VUMC Cell Imaging Shared Resource. We thank Dr Sean Davies from Vanderbilt University for the generous donation of synthetic isoketals and Dr Francisca Bronfman for kindly providing PC12 cells.

REFERENCES

- Erreger K, Davis AR, Poe AM, Greig NH, Stanwood GD, Galli A. Exendin-4 decreases amphetamine-induced locomotor activity. *Physiol Behav* 2012; **106**: 574–578.
- Reddy IA, Stanwood GD, Galli A. Moving beyond energy homeostasis: new roles for glucagon-like peptide-1 in food and drug reward. *Neurochem Int* 2014; **73**: 49–55.
- Harasta AE, Power JM, von Jonquieres G, Karl T, Drucker DJ, Housley GD *et al*. Septal glucagon-like peptide 1 receptor expression determines suppression of cocaine-induced behavior. *Neuropsychopharmacology* 2015; **40**: 1969–1978.
- Sorensen G, Reddy IA, Weikop P, Graham DL, Stanwood GD, Wortwein G *et al*. The glucagon-like peptide 1 (GLP-1) receptor agonist exendin-4 reduces cocaine self-administration in mice. *Physiol Behav* 2015; **149**: 262–268.
- Baggio LL, Drucker DJ. Biology of incretins: GLP-1 and GIP. *Gastroenterology* 2007; **132**: 2131–2157.
- Alhadeff AL, Rupprecht LE, Hayes MR. GLP-1 neurons in the nucleus of the solitary tract project directly to the ventral tegmental area and nucleus accumbens to control for food intake. *Endocrinology* 2012; **153**: 647–658.
- Drucker DJ, Nauck MA. The incretin system: glucagon-like peptide-1 receptor agonists and dipeptidyl peptidase-4 inhibitors in type 2 diabetes. *Lancet* 2006; **368**: 1696–1705.
- Pi-Sunyer X, Astrup A, Fujioka K, Greenway F, Halpern A, Krempf M *et al*. A randomized, controlled trial of 3.0 mg of liraglutide in weight management. *N Engl J Med* 2015; **373**: 11–22.
- Kastin AJ, Akerstrom V. Entry of exendin-4 into brain is rapid but may be limited at high doses. *Int J Obes Relat Metab Disord* 2003; **27**: 313–318.
- Merchenthaler I, Lane M, Shughrue P. Distribution of pre-pro-glucagon and glucagon-like peptide-1 receptor messenger RNAs in the rat central nervous system. *J Comp Neurol* 1999; **403**: 261–280.
- Dickson SL, Shirazi RH, Hansson C, Bergquist F, Nissbrandt H, Skibicka KP. The glucagon-like peptide 1 (GLP-1) analogue, exendin-4, decreases the rewarding value of food: a new role for mesolimbic GLP-1 receptors. *J Neurosci* 2012; **32**: 4812–4820.
- Shirazi RH, Dickson SL, Skibicka KP. Gut peptide GLP-1 and its analogue, exendin-4, decrease alcohol intake and reward. *PLoS One* 2013; **8**: e61965.
- Egecioglu E, Engel JA, Jerlhag E. The glucagon-like peptide 1 analogue exendin-4 attenuates the nicotine-induced locomotor stimulation, accumbal dopamine release, conditioned place preference as well as the expression of locomotor sensitization in mice. *PLoS One* 2013; **8**: e77284.
- Egecioglu E, Engel JA, Jerlhag E. The glucagon-like peptide 1 analogue, exendin-4, attenuates the rewarding properties of psychostimulant drugs in mice. *PLoS One* 2013; **8**: e69010.

- Egecioglu E, Steensland P, Fredriksson I, Feltmann K, Engel JA, Jerlhag E. The glucagon-like peptide 1 analogue Exendin-4 attenuates alcohol mediated behaviors in rodents. *Psychoneuroendocrinology* 2013; **38**: 1259–1270.
- Graham DL, Erreger K, Galli A, Stanwood GD. GLP-1 analog attenuates cocaine reward. *Mol Psychiatry* 2013; **18**: 961–962.
- Suchankova P, Yan J, Schwandt ML, Stangl BL, Caparelli EC, Momenan R *et al*. The glucagon-like peptide-1 receptor as a potential treatment target in alcohol use disorder: evidence from human genetic association studies and a mouse model of alcohol dependence. *Transl Psychiatry* 2015; **5**: e583.
- Volkow ND, Wise RA. How can drug addiction help us understand obesity? *Nat Neurosci* 2005; **8**: 555–560.
- Berridge KC, Robinson TE. What is the role of dopamine in reward: hedonic impact, reward learning, or incentive salience? *Brain Res Brain Res Rev* 1998; **28**: 309–369.
- Olds J, Milner P. Positive reinforcement produced by electrical stimulation of septal area and other regions of rat brain. *J Comp Physiol Psychol* 1954; **47**: 419–427.
- Sheehan TP, Chambers RA, Russell DS. Regulation of affect by the lateral septum: implications for neuropsychiatry. *Brain Res Brain Res Rev* 2004; **46**: 71–117.
- Luo AH, Tahsili-Fahadan P, Wise RA, Lupica CR, Aston-Jones G. Linking context with reward: a functional circuit from hippocampal CA3 to ventral tegmental area. *Science* 2011; **333**: 353–357.
- Sartor GC, Aston-Jones GS. A septal-hypothalamic pathway drives orexin neurons, which is necessary for conditioned cocaine preference. *J Neurosci* 2012; **32**: 4623–4631.
- Dadalko OI, Siuta M, Poe A, Erreger K, Matthies HJ, Niswender K *et al*. mTORC2/ rictor signaling disrupts dopamine-dependent behaviors via defects in striatal dopamine neurotransmission. *J Neurosci* 2015; **35**: 8843–8854.
- Sorensen G, Jensen M, Weikop P, Dencker D, Christiansen SH, Loland CJ *et al*. Neuropeptide Y Y5 receptor antagonism attenuates cocaine-induced effects in mice. *Psychopharmacology (Berl)* 2012; **222**: 565–577.
- Franklin K, Paxinos G. *The Mouse Brain in Stereotaxic Coordinates*. Academic Press: New York, NY, USA, 2007.
- Weikop P, Egestad B, Kehr J. Application of triple-probe microdialysis for fast pharmacokinetic/pharmacodynamic evaluation of dopaminergic activity of drug candidates in the rat brain. *J Neurosci Methods* 2004; **140**: 59–65.
- Robertson SD, Matthies HJ, Owens WA, Sathananthan V, Christianson NS, Kennedy JP *et al*. Insulin reveals Akt signaling as a novel regulator of norepinephrine transporter trafficking and norepinephrine homeostasis. *J Neurosci* 2010; **30**: 11305–11316.
- Shonesy BC, Bluett RJ, Ramikie TS, Baldi R, Hermanson DJ, Kingsley PJ *et al*. Genetic disruption of 2-arachidonoylglycerol synthesis reveals a key role for endocannabinoid signaling in anxiety modulation. *Cell Rep* 2014; **9**: 1644–1653.
- Bronfman FC, Tcherpakov M, Jovin TM, Fainzilber M. Ligand-induced internalization of the p75 neurotrophin receptor: a slow route to the signaling endosome. *J Neurosci* 2003; **23**: 3209–3220.
- Egana LA, Cuevas RA, Baust TB, Parra LA, Leak RK, Hochendoner S *et al*. Physical and functional interaction between the dopamine transporter and the synaptic vesicle protein synaptogyrin-3. *J Neurosci* 2009; **29**: 4592–4604.
- Ciliax BJ, Heilman C, Demchyshyn LL, Pristupa ZB, Ince E, Hersch SM *et al*. The dopamine transporter: immunohistochemical characterization and localization in brain. *J Neurosci* 1995; **15**(Pt 1): 1714–1723.
- Kuhar MJ, Ritz MC, Boja JW. The dopamine hypothesis of the reinforcing properties of cocaine. *Trends Neurosci* 1991; **14**: 299–302.
- Chen R, Tilley MR, Wei H, Zhou F, Zhou FM, Ching S *et al*. Abolished cocaine reward in mice with a cocaine-insensitive dopamine transporter. *Proc Natl Acad Sci USA* 2006; **103**: 9333–9338.
- Giros B, Jaber M, Jones SR, Wightman RM, Caron MG. Hyperlocomotion and indifference to cocaine and amphetamine in mice lacking the dopamine transporter. *Nature* 1996; **379**: 606–612.
- Speed N, Saunders C, Davis A, Owens W, Matthies H, Saadat S *et al*. Impaired striatal Akt signaling disrupts dopamine homeostasis and increases feeding. *PLoS One* 2011; **6**: 1–10.
- Williams JM, Owens WA, Turner GH, Saunders C, Dipace C, Blakely RD *et al*. Hypoinsulinemia regulates amphetamine-induced reverse transport of dopamine. *PLoS Biol* 2007; **5**: 2369–2378.
- Owens WA, Williams JM, Saunders C, Avison MJ, Galli A, Daws LC. Rescue of dopamine transporter function in hypoinsulinemic rats by a D2 receptor-ERK-dependent mechanism. *J Neurosci* 2012; **32**: 2637–2647.
- Gulley JM, Zahniser NR. Rapid regulation of dopamine transporter function by substrates, blockers and presynaptic receptor ligands. *Eur J Pharmacol* 2003; **479**: 139–152.
- Zahniser NR, Sorkin A. Rapid regulation of the dopamine transporter: role in stimulant addiction? *Neuropharmacology* 2004; **47**: 80–91.

- 41 Rao A, Sorkin A, Zahniser NR. Mice expressing markedly reduced striatal dopamine transporters exhibit increased locomotor activity, dopamine uptake turnover rate, and cocaine responsiveness. *Synapse* 2013; **67**: 668–677.
- 42 Tilley MR, Cagniard B, Zhuang X, Han DD, Tiao N, Gu HH. Cocaine reward and locomotion stimulation in mice with reduced dopamine transporter expression. *BMC Neurosci* 2007; **8**: 42.
- 43 Robertson SD, Matthies HJ, Sathananthan V, Christianson NSB, Kennedy JP, Lindsley CW et al. Insulin reveals Akt signaling as a novel regulator of norepinephrine transporter trafficking and norepinephrine homeostasis. *J Neurosci* 2010; **30**: 11305–11316.
- 44 Göke R, Fehmann HC, Linn T, Schmidt H, Krause M, Eng J et al. Exendin-4 is a high potency agonist and truncated exendin-(9-39)-amide an antagonist at the glucagon-like peptide 1-(7-36)-amide receptor of insulin-secreting beta-cells. *J Biol Chem* 1993; **268**: 19650–19655.
- 45 Horder J, Harmer CJ, Cowen PJ, McCabe C. Reduced neural response to reward following 7 days treatment with the cannabinoid CB1 antagonist rimonabant in healthy volunteers. *Int J Neuropsychopharmacol* 2010; **13**: 1103–1113.
- 46 Labouebe G, Liu S, Dias C, Zou H, Wong JC, Karunakaran S et al. Insulin induces long-term depression of ventral tegmental area dopamine neurons via endocannabinoids. *Nat Neurosci* 2013; **16**: 300–308.
- 47 Parsons LH, Hurd YL. Endocannabinoid signalling in reward and addiction. *Nat Rev Neurosci* 2015; **16**: 579–594.
- 48 Xi ZX, Peng XQ, Li X, Song R, Zhang HY, Liu QR et al. Brain cannabinoid CB(2) receptors modulate cocaine's actions in mice. *Nat Neurosci* 2011; **14**: 1160–1166.
- 49 Xi ZX, Spiller K, Pak AC, Gilbert J, Dillon C, Li X et al. Cannabinoid CB1 receptor antagonists attenuate cocaine's rewarding effects: experiments with self-administration and brain-stimulation reward in rats. *Neuropsychopharmacology* 2008; **33**: 1735–1745.
- 50 Nomura DK, Morrison BE, Blankman JL, Long JZ, Kinsey SG, Marcondes MC et al. Endocannabinoid hydrolysis generates brain prostaglandins that promote neuroinflammation. *Science* 2011; **334**: 809–813.
- 51 L'Hirondel M, Chéramy A, Godeheu G, Glowinski J. Effects of arachidonic acid on dopamine synthesis, spontaneous release, and uptake in striatal synaptosomes from the rat. *J Neurochem* 1995; **64**: 1406–1409.
- 52 Chen N, Appell M, Berfield JL, Reith ME. Inhibition by arachidonic acid and other fatty acids of dopamine uptake at the human dopamine transporter. *Eur J Pharmacol* 2003; **478**: 89–95.
- 53 Zhang L, Reith ME. Regulation of the functional activity of the human dopamine transporter by the arachidonic acid pathway. *Eur J Pharmacol* 1996; **315**: 345–354.
- 54 Westerink RH, Ewing AG. The PC12 cell as model for neurosecretion. *Acta Physiol (Oxf)* 2008; **192**: 273–285.
- 55 Kovacic P. Role of oxidative metabolites of cocaine in toxicity and addiction: oxidative stress and electron transfer. *Med Hypotheses* 2005; **64**: 350–356.
- 56 Poon HF, Abdullah L, Mullan MA, Mullan MJ, Crawford FC. Cocaine-induced oxidative stress precedes cell death in human neuronal progenitor cells. *Neurochem Int* 2007; **50**: 69–73.
- 57 Ng F, Berk M, Dean O, Bush AI. Oxidative stress in psychiatric disorders: evidence base and therapeutic implications. *Int J Neuropsychopharmacol* 2008; **11**: 851–876.
- 58 Teramoto S, Miyamoto N, Yatomi K, Tanaka Y, Oishi H, Arai H et al. Exendin-4, a glucagon-like peptide-1 receptor agonist, provides neuroprotection in mice transient focal cerebral ischemia. *J Cereb Blood Flow Metab* 2011; **31**: 1696–1705.
- 59 Brame CJ, Salomon RG, Morrow JD, Roberts LJ 2nd. Identification of extremely reactive gamma-ketoaldehydes (isolevuglandins) as products of the isoprostane pathway and characterization of their lysyl protein adducts. *J Biol Chem* 1999; **274**: 13139–13146.
- 60 Davies SS, Amarnath V, Brame CJ, Boutaud O, Roberts LJ 2nd. Measurement of chronic oxidative and inflammatory stress by quantification of isoketal/levuglandin gamma-ketoaldehyde protein adducts using liquid chromatography tandem mass spectrometry. *Nat Protoc* 2007; **2**: 2079–2091.
- 61 Davies SS, Amarnath V, Roberts LJ 2nd. Isoketals: highly reactive gamma-ketoaldehydes formed from the H2-isoprostane pathway. *Chem Phys Lipids* 2004; **128**: 85–99.
- 62 Davies SS, Brantley EJ, Voziyan PA, Amarnath V, Zagol-Ikapiite I, Boutaud O et al. Pyridoxamine analogues scavenge lipid-derived gamma-ketoaldehydes and protect against H2O2-mediated cytotoxicity. *Biochemistry* 2006; **45**: 15756–15767.
- 63 Morel P, Tallineau C, Pontcharraud R, Piriou A, Huguet F. Effects of 4-hydroxynonenal, a lipid peroxidation product, on dopamine transport and Na+/K+-ATPase in rat striatal synaptosomes. *Neurochem Int* 1998; **33**: 531–540.
- 64 Park SU, Ferrer JV, Javitch JA, Kuhn DM. Peroxynitrite inactivates the human dopamine transporter by modification of cysteine 342: potential mechanism of neurotoxicity in dopamine neurons. *J Neurosci* 2002; **22**: 4399–4405.
- 65 Huang CL, Huang NK, Shyue SK, Chern Y. Hydrogen peroxide induces loss of dopamine transporter activity: a calcium-dependent oxidative mechanism. *J Neurochem* 2003; **86**: 1247–1259.
- 66 Robertson SD, Matthies HJ, Galli A. A closer look at amphetamine-induced reverse transport and trafficking of the dopamine and norepinephrine transporters. *Mol Neurobiol* 2009; **39**: 73–80.
- 67 Mortensen OV, Amara SG. Dynamic regulation of the dopamine transporter. *Eur J Pharmacol* 2003; **479**: 159–170.
- 68 Pike LJ, Han X, Chung KN, Gross RW. Lipid rafts are enriched in arachidonic acid and plasmenylethanolamine and their composition is independent of caveolin-1 expression: a quantitative electrospray ionization/mass spectrometric analysis. *Biochemistry* 2002; **41**: 2075–2088.
- 69 Cremona ML, Matthies HJ, Pau K, Bowton E, Speed N, Lute BJ et al. Flotillin-1 is essential for PKC-triggered endocytosis and membrane microdomain localization of DAT. *Nat Neurosci* 2011; **14**: 469–477.
- 70 Gabriel LR, Wu S, Kearney P, Bellve KD, Standley C, Fogarty KE et al. Dopamine transporter endocytic trafficking in striatal dopaminergic neurons: differential dependence on dynamin and the actin cytoskeleton. *J Neurosci* 2013; **33**: 17836–17846.
- 71 Heath RG. Electrical self-stimulation of the brain in man. *Am J Psychiatry* 1963; **120**: 571–577.
- 72 Prado-Alcala R, Streather A, Wise RA. Brain stimulation reward and dopamine terminal fields. II. Septal and cortical projections. *Brain Res* 1984; **301**: 209–219.
- 73 Zahm DS, Parsley KP, Schwartz ZM, Cheng AY. On lateral septum-like characteristics of outputs from the accumbal hedonic "hotspot" of Pecina and Berridge with commentary on the transitional nature of basal forebrain "boundaries". *J Comp Neurol* 2013; **521**: 50–68.
- 74 Ahmed SH, Koob GF. Transition from moderate to excessive drug intake: change in hedonic set point. *Science* 1998; **282**: 298–300.
- 75 Calipari ES, Ferris MJ, Jones SR. Extended access of cocaine self-administration results in tolerance to the dopamine-elevating and locomotor-stimulating effects of cocaine. *J Neurochem* 2014; **128**: 224–232.
- 76 Ferris MJ, Calipari ES, Mateo Y, Melchior JR, Roberts DC, Jones SR. Cocaine self-administration produces pharmacodynamic tolerance: differential effects on the potency of dopamine transporter blockers, releasers, and methylphenidate. *Neuropsychopharmacology* 2012; **37**: 1708–1716.
- 77 Calipari ES, Ferris MJ, Melchior JR, Bermejo K, Salahpour A, Roberts DC et al. Methylphenidate and cocaine self-administration produce distinct dopamine terminal alterations. *Addict Biol* 2014; **19**: 145–155.
- 78 Ferris MJ, Calipari ES, Rose JH, Siciliano CA, Sun H, Chen R et al. A single amphetamine infusion reverses deficits in dopamine nerve-terminal function caused by a history of cocaine self-administration. *Neuropsychopharmacology* 2015; **40**: 1826–1836.
- 79 Chen N, Reith ME. Substrates and inhibitors display different sensitivity to expression level of the dopamine transporter in heterologously expressing cells. *J Neurochem* 2007; **101**: 377–388.
- 80 Volkow ND, Wang GJ, Fischman MW, Foltin RW, Fowler JS, Abumrad NN et al. Relationship between subjective effects of cocaine and dopamine transporter occupancy. *Nature* 1997; **386**: 827–830.
- 81 Mazei-Robison MS, Koo JW, Friedman AK, Lansink CS, Robison AJ, Vinish M et al. Role for mTOR signaling and neuronal activity in morphine-induced adaptations in ventral tegmental area dopamine neurons. *Neuron* 2011; **72**: 977–990.
- 82 Perry T, Greig NH. The glucagon-like peptides: a double-edged therapeutic sword? *Trends Pharmacol Sci* 2003; **24**: 377–383.
- 83 Ye Y, Birnbaum Y. Cyclic AMP-mediated pleiotropic effects of glucagon-like peptide-1 receptor activation. Focus on "Exendin-4 attenuates high glucose-induced cardiomyocyte apoptosis via inhibition of endoplasmic reticulum stress and activation of SERCA2a". *Am J Physiol Cell Physiol* 2013; **304**: C505–C507.
- 84 El Manira A, Kyriakatos A. The role of endocannabinoid signaling in motor control. *Physiology (Bethesda)* 2010; **25**: 230–238.
- 85 Bhattacharjee AK, Chang L, White L, Bazinet RP, Rapoport SI. D-Amphetamine stimulates D2 dopamine receptor-mediated brain signaling involving arachidonic acid in unanesthetized rats. *J Cereb Blood Flow Metab* 2006; **26**: 1378–1388.
- 86 Farooqui AA, Horrocks LA, Farooqui T. Modulation of inflammation in brain: a matter of fat. *J Neurochem* 2007; **101**: 577–599.
- 87 Abbas T, Faivre E, Holscher C. Impairment of synaptic plasticity and memory formation in GLP-1 receptor KO mice: Interaction between type 2 diabetes and Alzheimer's disease. *Behav Brain Res* 2009; **205**: 265–271.
- 88 Holscher C. Central effects of GLP-1: new opportunities for treatments of neurodegenerative diseases. *J Endocrinol* 2014; **221**: T31–T41.
- 89 Holscher C, Li L. New roles for insulin-like hormones in neuronal signalling and protection: new hopes for novel treatments of Alzheimer's disease? *Neurobiol Aging* 2010; **31**: 1495–1502.

- 90 Harkavyi A, Abuirmeileh A, Lever R, Kingsbury AE, Biggs CS, Whitton PS. Glucagon-like peptide 1 receptor stimulation reverses key deficits in distinct rodent models of Parkinson's disease. *J Neuroinflammation* 2008; **5**: 19.
- 91 Brame CJ, Boutaud O, Davies SS, Yang T, Oates JA, Roden D *et al*. Modification of proteins by isoketal-containing oxidized phospholipids. *J Biol Chem* 2004; **279**: 13447–13451.
- 92 Rivera P, Miguens M, Coria SM, Rubio L, Higuera-Matas A, Bermudez-Silva FJ *et al*. Cocaine self-administration differentially modulates the expression of endogenous cannabinoid system-related proteins in the hippocampus of Lewis vs. Fischer 344 rats. *Int J Neuropsychopharmacol* 2013; **16**: 1277–1293.
- 93 Mietlicki-Baase EG, Ortinski PI, Reiner DJ, Sinon CG, McCutcheon JE, Pierce RC *et al*. Glucagon-like peptide-1 receptor activation in the nucleus accumbens core suppresses feeding by increasing glutamatergic AMPA/kainate signaling. *J Neurosci* 2014; **34**: 6985–6992.
- 94 Mietlicki-Baase EG, Ortinski PI, Rupprecht LE, Olivos DR, Alhadeff AL, Pierce RC *et al*. The food intake-suppressive effects of glucagon-like peptide-1 receptor signaling in the ventral tegmental area are mediated by AMPA/kainate receptors. *Am J Physiol Endocrinol Metab* 2013; **305**: E1367–E1374.



This work is licensed under a Creative Commons Attribution 4.0 International License. The images or other third party material in this article are included in the article's Creative Commons license, unless indicated otherwise in the credit line; if the material is not included under the Creative Commons license, users will need to obtain permission from the license holder to reproduce the material. To view a copy of this license, visit <http://creativecommons.org/licenses/by/4.0/>

Supplementary Information accompanies the paper on the Translational Psychiatry website (<http://www.nature.com/tp>)