

# SCIENTIFIC REPORTS

**OPEN**

## Corrigendum: Identifying mutations in Tunisian families with retinal dystrophy

Imen Habibi, Ahmed Chebil, Yosra Falfoul, Nathalie Allaman-Pillet, Fedra Kort, Daniel F. Schorderet & Leila El Matri

*Scientific Reports* 6:37455; doi: 10.1038/srep37455; published online 22 November 2016; updated on 04 May 2017

This Article contains errors. The position of the mutation p.(R91W); (V172D) was incorrectly calculated, taking as a starting point the beginning of cDNA rather than the start codon. The correct position of the mutation is c.[271C > T]; [515T > A]. As a result of this the following changes in the Article are made:

The legend of Figure 3 is incorrect,

“(C) c.[325C > T]; [569T > A] (RPE65)”

should read:

“(C) c.[271C > T]; [515T > A] (RPE65)”.

In Table 3 for the family ID F7, the DNA mutation should read ‘c.[271C > T]; [515T > A]’.

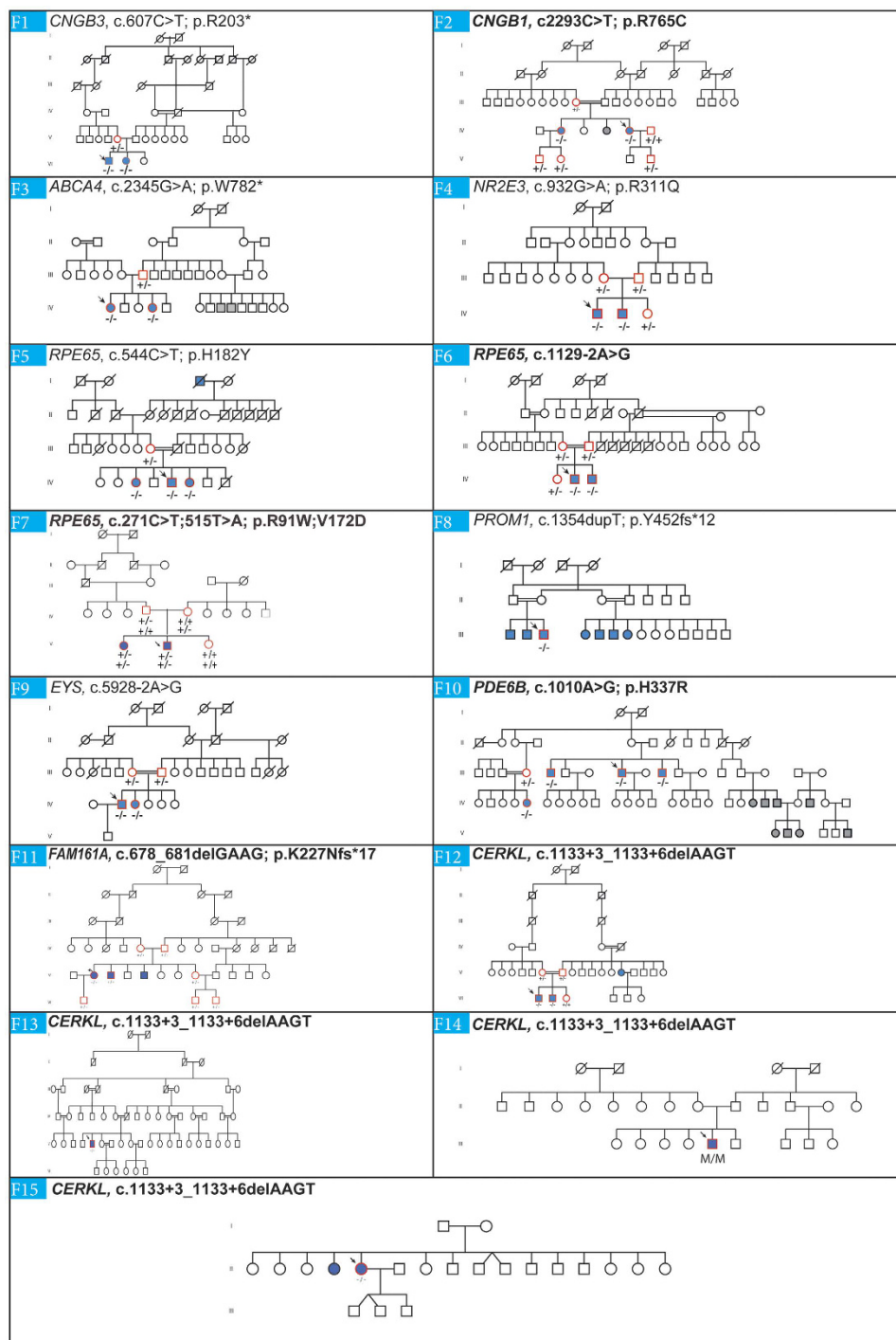
In Figure 5 for family F7 ‘RPE65, c.325C > T; 569T > A; p.R91W; V172D’ should read ‘RPE65, c.271C > T; 515T > A; p.R91W; V172D’. The correct Figure 5 appears below as Figure 1.

In the Results section under the subheading ‘Mutation analysis’,


“The second mutation was identified in family F7 and was a new compound heterozygous mutations c.[325C > T]; [569T > A] resulting in p.(R91W); (V172D) (Fig. 3C)”.

should read:

“The second mutation was identified in family F7 and was a new compound heterozygous mutations c.[271C > T]; [515T > A] resulting in p.(R91W); (V172D) (Fig. 3C)”.



**Figure 1.**

 This work is licensed under a Creative Commons Attribution 4.0 International License. The images or other third party material in this article are included in the article's Creative Commons license, unless indicated otherwise in the credit line; if the material is not included under the Creative Commons license, users will need to obtain permission from the license holder to reproduce the material. To view a copy of this license, visit <http://creativecommons.org/licenses/by/4.0/>

© The Author(s) 2017