

SCIENTIFIC REPORTS



OPEN

Hydrogen sulfide - cysteine cycle system enhances cadmium tolerance through alleviating cadmium-induced oxidative stress and ion toxicity in *Arabidopsis* roots

Received: 29 June 2016
Accepted: 25 November 2016
Published: 22 December 2016

Honglei Jia^{1,2}, Xiaofeng Wang², Yanhua Dou², Dan Liu², Wantong Si³, Hao Fang^{2,4}, Chen Zhao^{2,4}, Shaolin Chen^{2,4}, Jiejun Xi⁵ & Jisheng Li^{2,4}

Cadmium (Cd^{2+}) is a common toxic heavy metal ion. We investigated the roles of hydrogen sulfide (H_2S) and cysteine (Cys) in plant responses to Cd^{2+} stress. The expression of H_2S synthetic genes *LCD* and *DES1* were induced by Cd^{2+} within 3 h, and endogenous H_2S was then rapidly released. H_2S promoted the expression of Cys synthesis-related genes *SAT1* and *OASA1*, which led to endogenous Cys accumulation. The H_2S and Cys cycle system was stimulated by Cd^{2+} stress, and it maintained high levels in plant cells. H_2S inhibited the ROS burst by inducing alternative respiration capacity (AP) and antioxidant activity. H_2S weakened Cd^{2+} toxicity by inducing the metallothionein (MTs) genes expression. Cys promoted GSH accumulation and inhibited the ROS burst, and GSH induced the expression of phytochelatin (PCs) genes, counteracting Cd^{2+} toxicity. In summary, the H_2S and Cys cycle system played a key role in plant responses to Cd^{2+} stress. The Cd^{2+} tolerance was weakened when the cycle system was blocked in *lcdes1-1* and *oasa1* mutants. This paper is the first to describe the role of the H_2S and Cys cycle system in Cd^{2+} stress and to explore the relevant and specificity mechanisms of H_2S and Cys in mediating Cd^{2+} stress.

Cadmium (Cd^{2+}) is a common toxic heavy metal ion in the environment. It greatly affects the growth and development of plants and is harmful to human health through the food chain^{1,2}. Because of its carcinogenic properties and its detrimental effects on the growth of organisms, Cd^{2+} contamination of agricultural soil has become a critical concern. Preventing reduced growth and accumulation of Cd^{2+} in harvested organs of plants growing on Cd^{2+} -contaminated soils has become an urgent task as it can contribute to food safety. Thus, it is important to explore plant stress defense mechanisms and to find ways to reduce the Cd^{2+} accumulation in grains.

As a heavy metal not participating in redox reactions, Cd^{2+} can easily dissolve in water and quickly be taken up by plant roots^{3,4}. The physiological consequences of Cd^{2+} toxicity in plants are chlorosis, stunted growth, and cell death, among others⁵⁻⁷. At the cellular level, Cd^{2+} can alter protein structure and inhibit enzyme activity by binding to sulfhydryl and carbonyl groups and replacing essential co-factors of enzymes⁷⁻⁹. The overproduction of reactive oxygen species (ROS) is the primary response of plants to Cd^{2+} with negative impact on cell function¹⁰. Further damage can be caused by ROS-independent, secondary mechanisms. Lipid peroxidation is the most deleterious effect caused by Cd^{2+} -induced ROS⁴. Malondialdehyde (MDA), one of the decomposition products of lipid peroxidation, can modify active substrates in plant cells, including nucleic acids, proteins and saccharides¹¹. To become resistant to Cd^{2+} toxicity, plants have developed several strategies, such as inducing the

¹School of Environmental Science and Engineering, Shaanxi University of Science & Technology, Xi'an, Shaanxi 710021, China. ²College of Life Sciences, Northwest A&F University, Yangling, Shaanxi 712100, China. ³Inner Mongolia Key Laboratory of Biomass-Energy Conversion, Inner Mongolia University of Science and Technology, Baotou, Neimenggu, 014010, China. ⁴Biomass Energy Center for Arid and Semi-arid Lands, Northwest A&F University, Shaanxi 712100, China. ⁵Department of Grassland Science, College of Animal Science and Technology, Northwest A&F University, Shaanxi 712100, China. Correspondence and requests for materials should be addressed to J.L. (email: lijsh2011@163.com)

alternative respiratory pathway¹¹, activating antioxidants and glutathione (GSH)¹², and regulating the influx and efflux of heavy metals^{13,14}, as well as regulating the levels of heavy metal chelators, phytochelatins (PCs)¹⁵ and metallothioneins (MTs)¹⁶.

Hydrogen sulfide (H₂S) has been considered toxic gas for many years, which inhibits cytochrome oxidase activity in animal cell¹⁷. Recently, it has emerged as the third endogenous gasotransmitter, following the discovery of nitric oxide and carbon monoxide¹⁷. In plant systems, endogenous H₂S is generated through enzymatic pathways. Cysteine (Cys) desulfhydrases (CDes) are key enzymes involved in H₂S generation¹⁸. Cys synthesis occurs via two sequential phases catalyzed by serine acetyltransferase (SAT) and O-acetylserine(thiol)lyase (OAS-TL), both of which are encoded by multigene families¹⁹. L-Cys desulfhydrase (LCD) is the most understood CDes in Arabidopsis; it regulates L-Cys degradation into pyruvate, ammonia and H₂S²⁰. OAS-TL regulates that H₂S and O-acetylserine (OAS) synthetise L-Cys²⁰. These physiological processes form H₂S - Cys cycle system in cell. Recently, based on the sequence characteristics of DES1, it has been classified as an OAS-TL²¹. However, functional analysis of this enzyme revealed that DES1 has a higher affinity for L-Cys and degrades it to generate H₂S²¹.

The alternative respiratory pathway is a unique pathway in the mitochondrial electron transport chain in higher plants that is regulated by alternative oxidase (AOX)²². A large body of evidence suggests that the enhanced alternative pathway could improve stress tolerance through limiting the ROS burst^{22,23}. Recent research indicated that respiratory activity is regulated by endogenous H₂S in *Escherichia coli*²⁴. However, the relationship between H₂S and the alternative respiratory pathway in plant responses to Cd²⁺ stress is unclear.

Sulfur is an essential element that is taken up by plants in its oxidized state, reduced to H₂S, and first incorporated into Cys before it is used in metabolic processes. The products of sulfur metabolism, such as Cys, GSH, PCs, MTs and H₂S, have biological functions in plant responses to heavy metal stress and oxidative stress²⁵. Recently, positive effects of H₂S in response to several types of abiotic stress in plants have been found, such as osmotic stress, salt stress, heat shock stress and heavy metal stress^{26–29}. It has been reported that a cross-talk between H₂S and nitric oxide is responsible for the increased Cd²⁺ tolerance in alfalfa and Bermuda grass plants^{30,31}. In addition, H₂S alleviates Cd²⁺ toxicity by regulating cadmium transport in *Populus euphratica* cells³². H₂S is also involved in the growth and development of plants through its effects on stomatal closure and seed germination and by increasing the growth rate^{33–36}. Cys acts as a functional precursor for many important biologic activators, such as PCs and GSH, which can enhance the tolerance of plants to heavy metal stress^{25,37}. In addition, Cd²⁺ tolerance significantly decreases when Cys biosynthesis is blocked in *oasa1-1* and *oasa1-2* mutants³⁷.

Compelling evidence has suggested that H₂S and Cys are involved in plant tolerance to heavy metal stress. The biosynthesis of H₂S and Cys are interrelated. H₂S is involved in the uptake of SO₄²⁻ and in the biosynthesis of Cys. Cys is also involved in the generation of H₂S. Nevertheless, the relation and interaction between H₂S and Cys are yet unknown under Cd²⁺ stress. In this study, we aimed to clarify the common and independent functions of H₂S and Cys in Cd²⁺ stress. Additionally, we sought to demonstrate the working mechanisms of the H₂S and Cys cycle system response to Cd²⁺ stress in Arabidopsis.

Results

Effect of Cd²⁺ on root elongation, MDA and EL in Arabidopsis roots. Arabidopsis seedlings (7-d-old) were transferred aseptically to 1/2 MS medium-containing CdCl₂, and the lengths of the primary roots were measured 5 d later. Cd²⁺ stress led to toxicity symptoms and inhibited the elongation of Arabidopsis roots in a dose-dependent manner. As shown in Fig. 1a and b, root growth was slightly inhibited under 25 μM Cd²⁺, but root elongation was significantly inhibited under 50 to 150 μM Cd²⁺, exhibiting 53.5% to 34.9% inhibition, respectively. Malondialdehyde (MDA) and electrolyte leakage (EL) are considered as good indicators of stress-induced cell damage. Cd²⁺ stress caused lipid peroxidation and MDA accumulation. When plants were treated with 50 to 150 μM Cd²⁺, the MDA content of the roots increased by 117% to 200%, respectively (Fig. 1c). In the presence of 50 to 150 μM Cd²⁺, EL increased by 131% to 217%, respectively (Fig. 1d). The 50 to 150 μM Cd²⁺ treatment had significant effects on Arabidopsis roots. 100 and 150 μM Cd²⁺ concentrations were too violent for plant growth and 150 μM Cd²⁺ concentrations lead to the seedling etiolation in Fig. 1a. Thus, 50 μM Cd²⁺ was chosen for further study of Cd²⁺ stress.

Effect of Cd²⁺, NaHS and Cys on the H₂S and Cys cycle system. To explore the working mechanisms of the H₂S and Cys cycle system's response to Cd²⁺ stress in Arabidopsis roots, a time-course analysis of endogenous H₂S and Cys contents was performed. Endogenous H₂S and Cys contents undulated along with the time of Cd²⁺ stress. H₂S content was rapidly induced after treatment with Cd²⁺ for 3 h, reached the highest level at 9 h, and then decreased at 12 h, but had another increase at 36 h (Fig. 2a). Treatment with Cys could enhance the H₂S level and maintain H₂S content at a high level in Cd²⁺ stress (Fig. 2a). The Cys level slightly decreased in the initial stage under Cd²⁺ treatment, but it increased after treatment with Cd²⁺ for 12 h and maintained a high level from 24 to 36 h (Fig. 2b). Treatment with NaHS promoted Cys accumulation and a high level of Cys was maintained during Cd²⁺ stress (Fig. 2b). When plants were treated with 50 or 100 μM Cd²⁺ for a long time, both H₂S and Cys levels were enhanced in Arabidopsis roots (Fig. 2c and d). As mentioned above, H₂S and Cys contents were elevated by Cd²⁺ stress, and H₂S appeared to be an important mediator in the Cd²⁺-induced increase of Cys, and the H₂S and Cys cycle system was enhanced.

The effects of Cd²⁺, NaHS and Cys on synthetic genes of H₂S and Cys. To study the direct effects of Cd²⁺, NaHS and Cys on genes regulating the synthesis of H₂S and Cys, the Arabidopsis seedlings were exposed to various treatments for 3 h. The expressions of H₂S synthetic genes *LCD* and *DES1* were markedly induced by Cd²⁺ and Cys (Fig. 3a and b), but the expression of *D-CDES* was not significantly affected by Cd²⁺ and Cys treatments (Fig. 3c). *SATs* and *OASs* are the important synthetic genes of Cys, but they had different responses to Cd²⁺, NaHS and Cys. The expression levels of *SAT1* and *OASA1* were slightly increased in Cd²⁺ stress, but they were

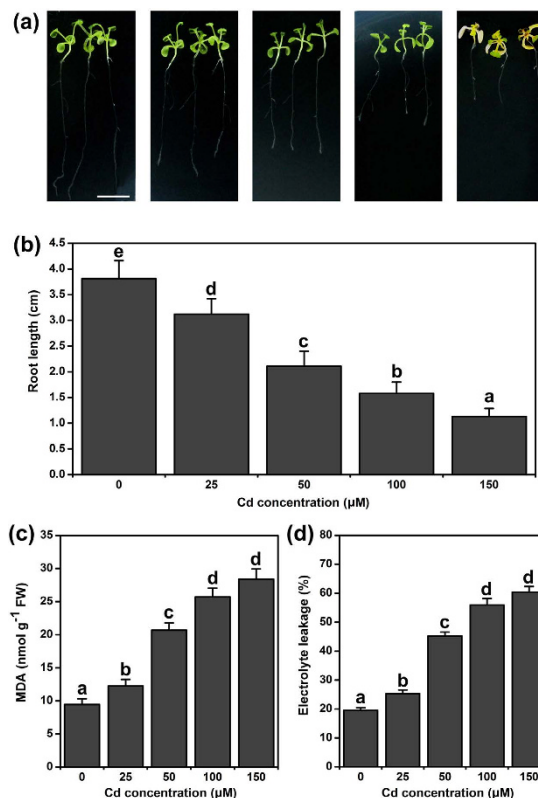


Figure 1. The effect of Cd²⁺ on root length, MDA and EL in Arabidopsis roots. (a) Phenotype of root growth in WT seedlings. Bar = 1 cm. (b) The root lengths of WT seedlings (n > 25). (c) MDA contents in WT roots stressed by various concentrations of Cd²⁺. (d) EL in WT roots stressed by various concentrations of Cd²⁺. 7-d-old Arabidopsis seedlings were grown on 1/2 MS agar plates supplied with 0–150 µM Cd²⁺ for 5 d, and the lengths of the primary roots, MDA contents and EL were recorded. Mean values and SE were calculated from three replicates. Within each set of experiments, bars with different letters are significantly different (P < 0.05, Duncan's multiple range tests).

markedly induced by treatment with NaHS (Fig. 3d and g). Additionally, the expression of SAT5 was inhibited by Cys (Fig. 3f). SAT3, OASB and OASC did not respond to Cd²⁺, NaHS or Cys (Fig. 3e,h and i).

The effects of Cd²⁺, NaHS and Cys on root elongation, MDA and EL in *lccdes1-1* and *oasa1* mutants. Five-day-old Arabidopsis seedlings were transferred aseptically to Cd²⁺-containing 1/2 MS medium, and the lengths of the primary roots were measured one week later. The root elongation of *lccdes1-1* mutant was shorter compared to WT root elongation under control conditions, but the root elongation of *oasa1* was the same as WT (Fig. 4a and b). The *lccdes1-1* and *oasa1* mutants were more sensitive to Cd²⁺ stress. Application of NaHS or Cys recovered the Cd²⁺-induced growth inhibition in WT. NaHS markedly recovered the effect of Cd²⁺ in *lccdes1-1*, but it only partly recovered the effect of Cd²⁺ in *oasa1* (Fig. 4a and b). On the contrary, treatment with Cys slightly recovered the effect of Cd²⁺ in *lccdes1-1*, but it significantly recovered the effect of Cd²⁺ in *oasa1* (Fig. 4a and b). Cys-mediated partial recovery the root length may be due to an independent physiological action of Cys in *lccdes1-1* because H₂S production was blocked in the double mutant. NaHS or Cys treatment markedly decreased the EL level and the content of MDA under Cd²⁺ stress in WT (Fig. 4c and d). NaHS strongly reduced the MDA content and the EL in *lccdes1-1* and *oasa1* (Fig. 4c and d). Cys prevented the effects of Cd²⁺ on the MDA content and EL in *oasa1* but partly weakened the effects of Cd²⁺ on the MDA content and EL in *lccdes1-1* (Fig. 4c and d).

The effects of Cd²⁺, NaHS and Cys on the alternative respiratory pathway. The alternative respiratory pathway plays an important role in plant stress resistance by limiting the ROS burst³⁸. In this study, we sought to elucidate the roles of NaHS and Cys in the alternative respiratory pathway under Cd²⁺ stress. In general, the alternative pathway operates at a low level under normal conditions, but it can be significantly induced when plants are stimulated by various environmental stresses²³. We first checked the expression of AOX genes after Cd²⁺, NaHS and Cys treatments for 3 h. The expression of AOX1A, AOX1C and AOX2 were increased in Cd²⁺ stress (Fig. 5a,b and c). Interestingly, NaHS and Cys treatments also markedly enhanced the expression levels of AOX1A, AOX1C and AOX2 in both control and Cd²⁺ stress conditions (Fig. 5a,b and c). Furthermore, the total respiration capacity (TP), cytochrome respiration capacity (CP) and alternative respiration capacity (AP) were analyzed in WT and mutant plants. TP was slightly enhanced by 25 or 50 µM Cd²⁺, but it was inhibited by 100 or 150 µM Cd²⁺ in WT (Fig. 5d). Under Cd²⁺ stress, CP was inhibited in a dose-dependent manner; however,

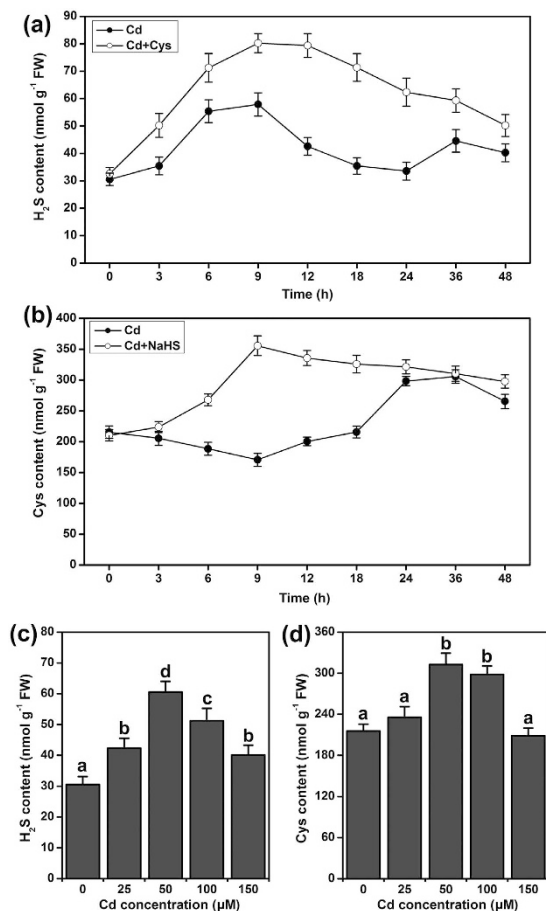


Figure 2. Analysis of endogenous H₂S and Cys contents in WT roots of Arabidopsis. (a) Time-course of H₂S content. (b) Time-course of Cys content. 7-d-old WT seedlings were treated with 50 μM Cd²⁺, 50 μM Cd²⁺ + 1 mM Cys and 50 μM Cd²⁺ + 50 μM NaHS for 0 to 48 h. (c) Changes of H₂S content in various Cd²⁺ concentrations. (d) Changes of Cys content in various Cd²⁺ concentrations. 7-d-old WT seedlings were supplied with 0–150 μM Cd²⁺ for 5 d. Mean values and SE are calculated from three replicates. Within each set of experiments, bars with different letters are significant different ($P < 0.05$, Duncan's multiple range tests).

AP was increased under Cd²⁺ stress, and AP achieved its maximum induction with the 50 μM Cd²⁺ treatment (Fig. 5e). Similar to the pattern of expression of the AOX genes in response to NaHS or Cys treatments under Cd²⁺ stress, AP was increased by NaHS or Cys under Cd²⁺ stress (Fig. 5f). However, it was different in the mutant plants. Under Cd²⁺ stress, the effects of Cys on AP were not observed in *lcd* and *des1-1*, and they were especially decreased in *lccdes1-1* (Fig. 5g,h and i). In *oasa1*, the effects of NaHS and Cys were the same as in WT under Cd²⁺ stress (Fig. 5g).

The effects of Cd²⁺, NaHS and Cys on antioxidant enzyme activity and GSH level, and the relationship among AP, antioxidant enzyme activity, and GSH level in Cd²⁺ stress.

Antioxidant enzymes depress the level of ROS. A previous study showed that H₂S could enhance antioxidant activity in rice³⁹. In addition, many studies suggested that AOX was important in maintaining the homeostasis of the redox state^{22,38}. Therefore, the effects of Cd²⁺, NaHS, Cys and AP on antioxidant enzyme activity were analyzed. As shown in Fig. 6a and c, after 12 h of 50 μM Cd²⁺ treatment, the activities of SOD and CAT in plants were significantly higher than in the control plants in WT. NaHS or Cys treatments could enhance the antioxidant activity under unstressed conditions (Fig. 6b and d), and this enhancement was further strengthened under Cd²⁺ stress in WT (Fig. 6a and c). However, treatment with n-propyl gallate (nPG) had no significant effect on the antioxidant activity of the plants either under Cd²⁺ stress or under unstressed conditions. Furthermore, nPG did not affect the elevated antioxidant activity of the NaHS- and Cys-treated plants under Cd²⁺ stress (Fig. 6a and c). The effects of Cd²⁺ and Cys were altered in *lccdes1-1*; treatment with Cd²⁺ or Cys did not enhance the antioxidant activity in *lccdes1-1* (Fig. 6b and d). Additionally, the effects of Cd²⁺ on the SOD activity were also weakened, and CAT activity was negligible in *oasa1* (Fig. 6d). Contrarily, treatment with NaHS still enhanced the antioxidant activity in mutant plants (Fig. 6b and d).

GSH is the product of sulfur metabolism, and it has positive biological functions in plant responses to heavy metal stress and oxidative stress²⁵. As shown in Fig. 6e, the GSH content was increased in Cd²⁺ stress. NaHS and Cys also enhanced the GSH level in WT (Fig. 6e and f). Specially, Cys had a significant promoting effect on GSH content. The *oasa1* mutant did not respond to Cd²⁺ and NaHS, and even had a reduced GSH level, but Cys still

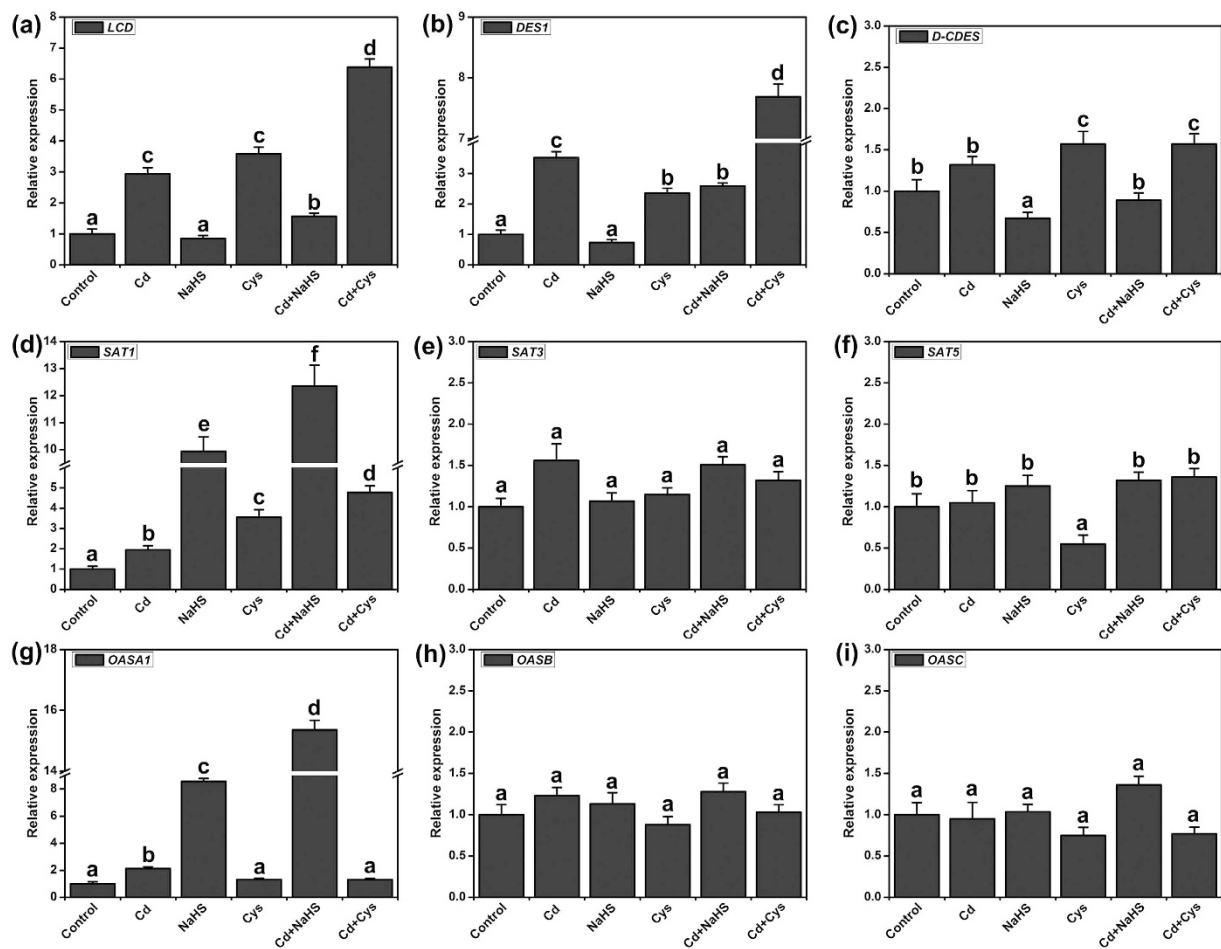


Figure 3. qRT-PCR analysis the synthesis genes of H₂S and Cys in Arabidopsis WT roots. Relative expression levels were normalized with the internal standard *EF1a*. 7-d-old WT seedlings were grown on agar plates supplemented with 50 μM Cd²⁺, 50 μM NaHS, 1 mM Cys, 50 μM Cd²⁺ plus 50 μM NaHS, and 50 μM Cd²⁺ plus 1 mM Cys for 3 h, respectively. Mean values and SE were calculated from three replicates. Within each set of experiments, bars with different letters are significant different ($P < 0.05$, Duncan's multiple range tests).

increased the GSH content in *oasa1* (Fig. 6f). Additionally, the effect of Cd²⁺, NaHS and Cys on the GSH content in *lcdes1-1* was the same as WT plants (Fig. 6f).

Effect of NaHS and Cys on ROS, and the relationship between AP and ROS in Cd²⁺ stress. To estimate the potential role of the H₂S and Cys cycle in ROS homeostasis, we visualized the production of H₂O₂ in the roots under Cd²⁺ stress. Over-accumulation of H₂O₂ was visualized by fluorescence labeling in the roots subjected to Cd²⁺ stress (Fig. 7a). Conversely, NaHS or Cys treatment considerably diminished the accumulation of H₂O₂ in Cd²⁺ stress (Fig. 7a and b). Additionally, inhibiting the alternative respiratory pathway with nPG caused an over-accumulation of H₂O₂ under Cd²⁺ stress. The effects of NaHS and Cys were partly averted and slightly weakened by nPG in Cd²⁺ stress, respectively (Fig. 7a and b). As shown in the time-course of H₂O₂, the ROS burst occurred during the early phase of Cd²⁺ stress. Then, high levels of ROS were maintained from 4 to 8 h and declined after 12 h. H₂S supplementation could maintain H₂O₂ at a low level during Cd²⁺ stress. Treatment with Cys did not alter the burst of H₂O₂ in the early phase, but it prevented the over-accumulation of H₂O₂ after 6 h (Fig. 7c).

Effect of NaHS and Cys on Cd²⁺ accumulation. The role of H₂S and Cys in Cd²⁺ homeostasis was investigated by measuring the percentage of Cd²⁺ in the root. The results in Fig. 8a show that Cd²⁺ accumulation increased in roots under Cd²⁺ stress in WT and in the mutants, but the mutants accumulated more Cd²⁺ than the WT. NaHS or Cys supplementation had inhibitory effects on Cd²⁺ uptake and accumulation in WT and *oasa1*. Nevertheless, *lcdes1-1* did not respond to the effect of NaHS under Cd²⁺ stress, but the effect of Cys on Cd²⁺ uptake and accumulation was only partially reduced in *lcdes1-1*.

Effect of NaHS and Cys on the expression of heavy metal chelator genes. When plants were treated with Cd²⁺ for 3 h, the expression of the heavy metal chelator genes *PCS1*, *PCS2*, *MT1A*, *MT1B* and *MT2B* was significantly up-regulated in WT. Cys supplementation promoted the expression of *PCS1* and *PCS2*, and

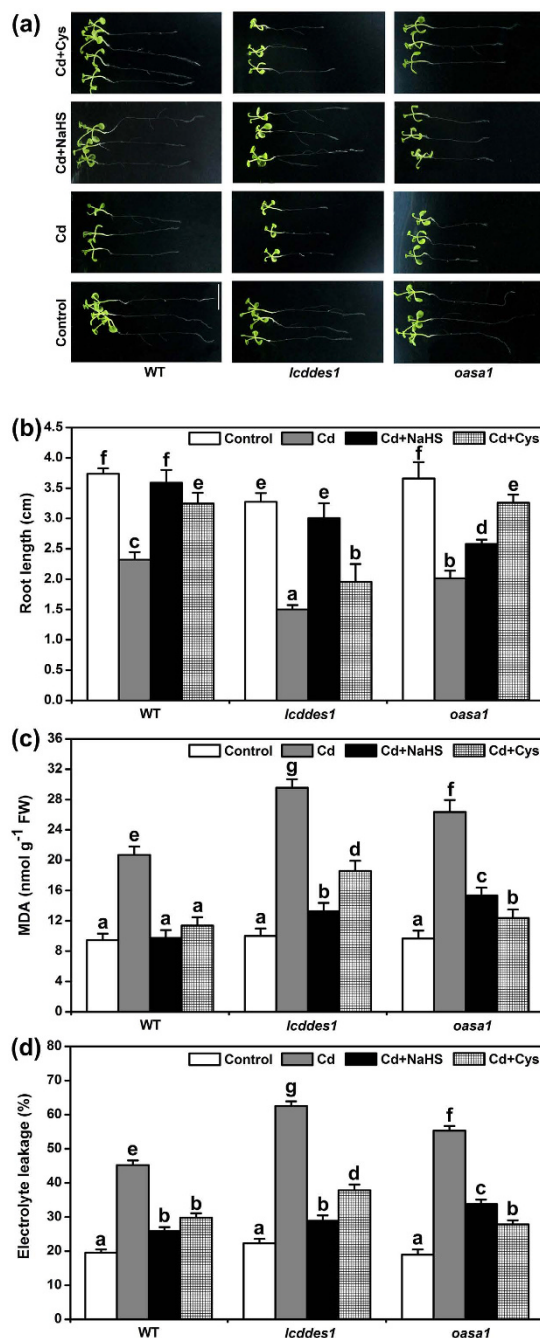


Figure 4. The effect of H₂S and Cys on root length, MDA and EL in *lclldes1-1* and *oasa1* mutant plants under Cd²⁺ stress. (a) Phenotype of Arabidopsis root growth. Bar = 1 cm. (b) The root lengths of Arabidopsis seedlings (n > 25). (c) MDA contents in Arabidopsis roots. (d) EL in Arabidopsis roots. 7-d-old Arabidopsis seedlings were grown on 1/2 MS agar plates supplied with 50 μM Cd²⁺, 50 μM Cd²⁺ plus 50 μM NaHS and 50 μM Cd²⁺ plus 1 mM Cys for 5 d respectively, and the lengths of the primary roots, MDA contents and EL were recorded. Mean values and SE were calculated from three replicates. Within each set of experiments, bars with different letters are significantly different (P < 0.05, Duncan's multiple range tests).

NaHS promoted the expression of *MT1A*, *MT1B* and *MT2B* (Fig. 8b). To further study the effect of the H₂S and Cys cycle system on the heavy metal chelator genes, the time-course of *PCS1* and *MT1A* gene expression was investigated. Cd²⁺ was found to up-regulate the expression of *PCS1* and *MT1A* genes at 0.5 h, which then remained at a high expression level. Cys enhanced the expression of the *PCS1* gene at 0.5 h, which reached a maximum by 1 h, but NaHS enhanced the expression of the *PCS1* gene at 6 to 12 h. The expression of *MT1A* was different from *PCS1*. After 3 h of Cys supplementation, the expression of *MT1A* started to increase, reaching a maximum at 6 h, and NaHS enhanced the expression of *MT1A* gene at 0.5 h (Fig. 8c and d).

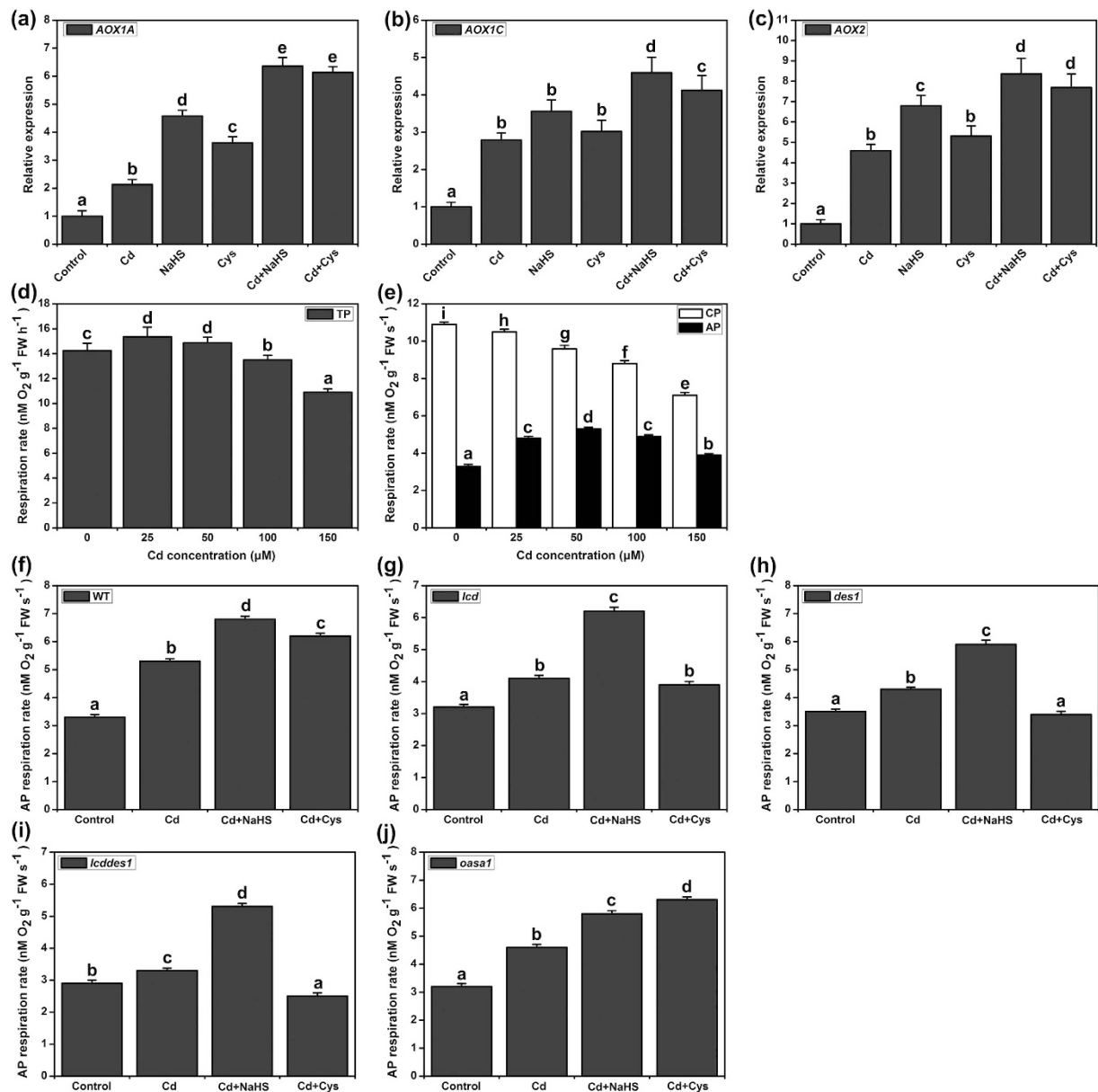


Figure 5. Effect of H₂S and Cys on the expression of AOX genes and the activity of TP, CP and AP in Cd²⁺ stress. (a–c) The expression of AOX1A, AOX1C and AOX2. 7-d-old WT seedlings were grown on 1/2 MS agar plates supplied with 50 μM Cd²⁺, 50 μM NaHS, 1 mM Cys, 50 μM Cd²⁺ plus 50 μM NaHS, and 50 μM Cd²⁺ plus 1 mM Cys for 3 h, respectively. (d,e) Changes in TP, CP and AP activity in various Cd²⁺ concentrations for 5 d in WT. (f–i) AP activity in WT and mutants. 7-d-old Arabidopsis seedlings were grown on 1/2 MS agar plates treated with 50 μM Cd²⁺, 50 μM Cd²⁺ plus 50 μM NaHS and 50 μM Cd²⁺ plus 1 mM Cys for 5 d. Mean values and SE were calculated from three replicates. Within each set of experiments, bars with different letters are significantly different ($P < 0.05$, Duncan's multiple range tests).

Discussion

The root is the primary organ that plants deploy to accumulate most of the heavy metals to which they are exposed^{40,41}. Sulfur metabolism is required for the growth and development of plants, and the production of sulfur metabolites also plays a critical role in plant responses to heavy metal-induced stress²⁵. H₂S and Cys are important sulfur metabolism products that participate in suppressing heavy metal stress in plants⁴⁰. In previous reports, H₂S and Cys were always studied separately in plant responses to abiotic stress^{39,42}. Recently, H₂S and H₂S-induced Cys accumulation were reported to be critical in imparting Cr⁶⁺ tolerance in Arabidopsis⁴³. Therefore, the H₂S and Cys cycle is an important system for regulating H₂S and Cys functions in heavy metal stress. In this study, we used the *lddes1-1* and *oasa1* Arabidopsis mutants to block the H₂S and Cys cycle system. Then, we intensively researched the relevant and specificity roles of H₂S and Cys in Cd²⁺ stress. Our results indicated that Cd²⁺ can rapidly accumulate in Arabidopsis roots and inhibit the primary root growth in a Cd²⁺ concentration-dependent manner (Figs 1a and 7a), suggesting that Cd²⁺ is easily absorbed and highly toxic.

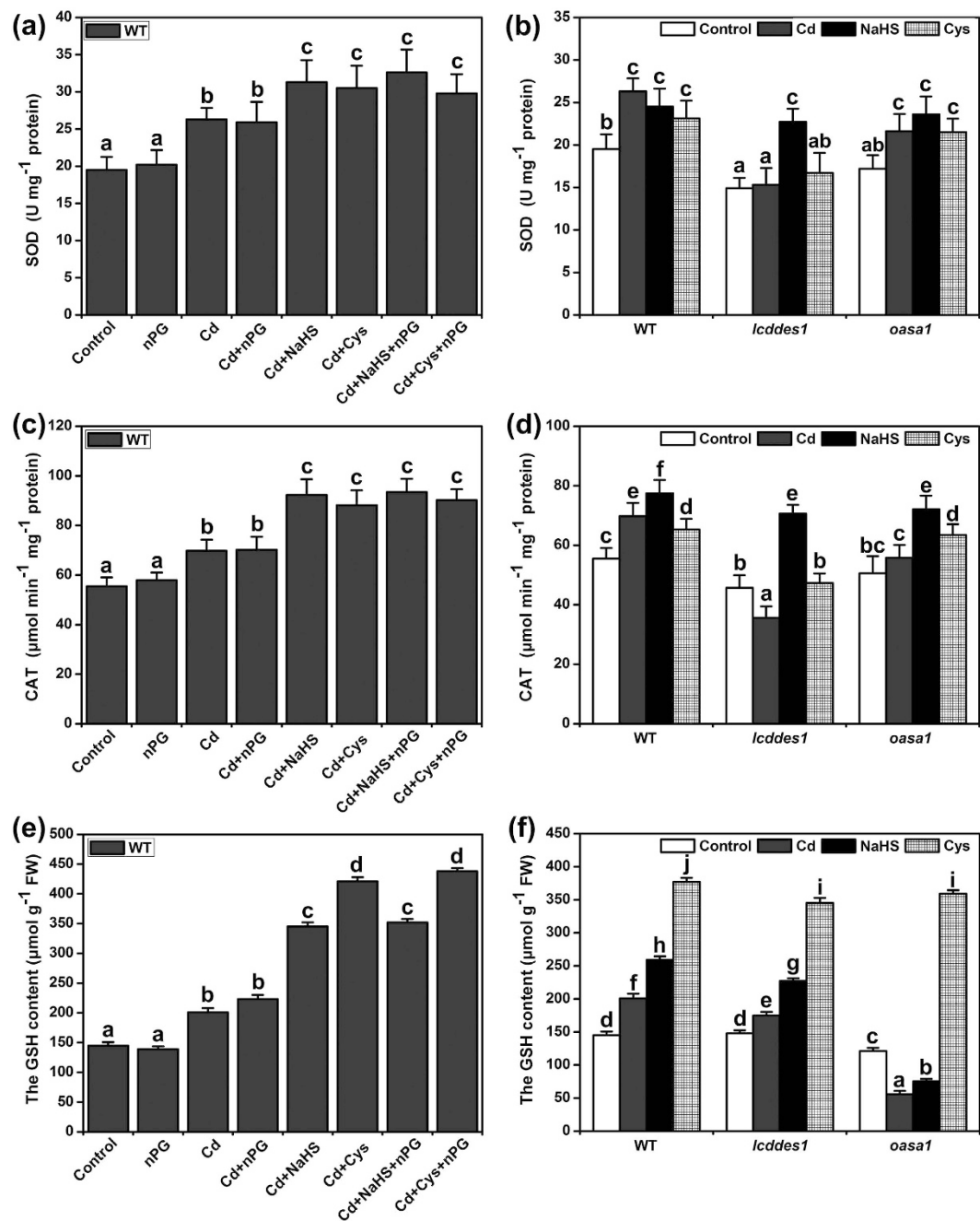


Figure 6. Effect of H₂S and Cys on antioxidant enzymes activity and GSH level in Cd²⁺ stress. 7-d-old Arabidopsis seedlings were grown on 1/2 MS agar plates supplemented with 50 μM Cd²⁺, 50 μM NaHS, 1 mM Cys, and 200 μM nPG for 6 h, and SOD activity (a,b), CAT activity (c,d) and GSH content (e,f) were recorded. Mean values and SE were calculated from three replicates. Within each set of experiments, bars with different letters are significantly different ($P < 0.05$, Duncan's multiple range tests).

We observed that endogenous H₂S and Cys levels undulate from 3 to 48 h under Cd²⁺ stress (Fig. 2). However, the endogenous patterns of change were different for H₂S and Cys levels. Endogenous H₂S was first induced by Cd²⁺ stress, and then Cys levels increased. On this account, we suppose that H₂S is produced rapidly under Cd²⁺ stress and that it acts as second messenger to activate the synthesis of Cys, implying that Cd²⁺ stress could be the direct cause of endogenous H₂S release but that Cys accumulation is a secondary effect of Cd²⁺ stress. Data for the expression of H₂S and Cys synthetic genes supports this hypothesis. The expression of H₂S synthetic genes was directly induced by Cd²⁺, and then, exogenous H₂S supplementation induced the upregulation of Cys synthetic-related genes (Fig. 3). Additionally, exogenous H₂S or Cys supplementation during Cd²⁺ stress could rapidly induce mutual endogenous levels of the other contents in Cd²⁺ stress. These results suggested that the H₂S - Cys cycle system was triggered by Cd²⁺ and that H₂S and Cys could promote the production of each other,

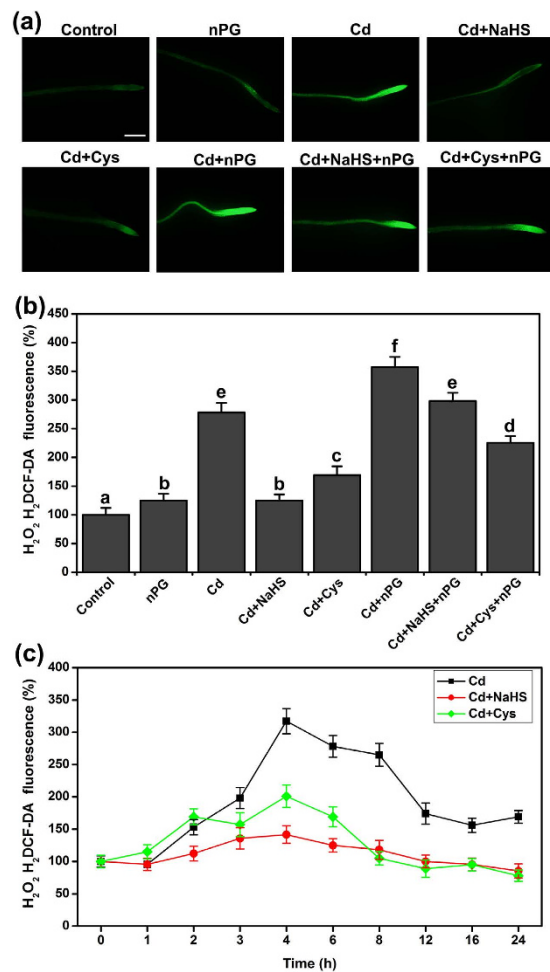


Figure 7. The changes of the endogenous H₂O₂ level in Arabidopsis root. (a) H₂O₂ H₂DCF-DA fluorescence in WT roots (bar = 100 μm). (b) Quantification of H₂O₂ H₂DCF-DA fluorescence intensity. (c) Time-course of H₂O₂ level. 7-d-old Arabidopsis seedlings were grown on 1/2 MS agar plates supplemented with 50 μM Cd²⁺, 50 μM NaHS, 1 mM Cys, and 200 μM nPG for 6 h (a,b), 0–24 h (c). H₂DCF-DA fluorescence intensity data represents mean grey values. SE was calculated from measurements of at least five roots for each treatment, and the experiments were repeated three times. Within each set of experiments, bars with different letters are significantly different (P < 0.05, Duncan's multiple range tests).

forming a cycle of activation. Finally, treatment with Cd²⁺ for 5 d, H₂S and Cys contents increased significantly in Arabidopsis roots.

The expression levels of the Cys synthesis-related genes *OASA1* and *SAT1* were up-regulated significantly by H₂S treatment, and the H₂S synthesis genes *LCD* and *DES1* were up-regulated significantly by Cys treatment (Fig. 3). *OASA1* directly regulated Cys synthesis, and *LCD* and *DES1* directly regulated H₂S synthesis; thus, *lcd*, *des1-1*, *lcddes1-1* and *oasa1* were used to study the H₂S and Cys cycle system in Cd²⁺ stress. The Cd²⁺-induced root shortening and increases in MAD and EL were markedly enhanced in mutant plants, suggesting that the Cd²⁺ resistance was weakened when the H₂S and Cys cycle was blocked. Exogenous H₂S or Cys supplementation only partly restored the root growth, MAD and EL levels, suggesting that H₂S or Cys alone could not replace the function of the H₂S and Cys cycle in plant cells. Additionally, the H₂S and Cys system is also important for stress caused by other heavy metals, such as Cr⁶⁺; it was reported that NaHS treatment increases the expression levels of the Cys synthesis-related genes⁴³. However, different heavy metal stress condition lead to the difference genes expression include MTs genes⁴³, thus Cd²⁺ and Cr⁶⁺ condition also could lead to the difference MTs genes expression. The details regarding the mechanism of H₂S in heavy metal resistance requires further study.

Excessive Cd²⁺ can induce the production of ROS, which is highly toxic to biomembranes, nucleic acids and proteins¹¹. The alternative respiratory pathway plays an important role in stress conditions by repressing the production of ROS^{22,23,42}. Our study also found that the CP and AP activities were altered by Cd²⁺ stress (Fig. 5e). Plant signaling molecules, such as nitric oxide, can regulate the alternative respiratory pathway in stress conditions⁴⁴. Whether an H₂S signal or Cys could affect AP activity was not previously known; our analysis found that exogenous H₂S or Cys supplementation could further induce the activity of AP in Cd²⁺ stress. However, in H₂S synthesis mutants, the effect of Cys was negligible, and in Cys synthesis mutants, the effect of H₂S was not altered.

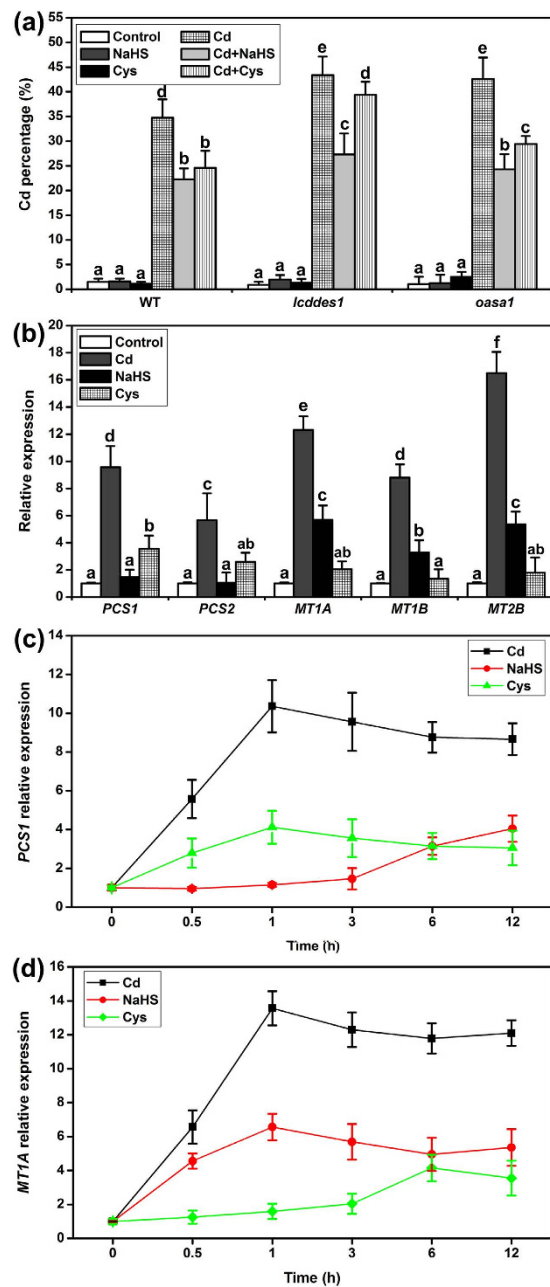


Figure 8. Effect of NaHS and Cys on Cd²⁺ percentage and qRT-PCR analysis the expression of heavy metal chelators genes in Arabidopsis roots. (a) Cd²⁺ accumulation in Arabidopsis roots. (b) The expression of *PCS1*, *PCS2*, *MT1A*, *MT1B* and *MT2B* in WT. (c) Time-course of *PCS1* gene expression. (d) Time-course of *MT1A* gene expression. 7-d-old Arabidopsis seedlings were grown on 1/2 MS agar plates supplied with 50 μM Cd²⁺, 50 μM NaHS and 1 mM Cys for 5 d (a), 3 h (b), 0–12 (c,d). Mean values and SE were calculated from three replicates. Within each set of experiments, bars with different letters are significantly different ($P < 0.05$, Duncan's multiple range tests).

These data imply that H₂S is a direct trigger of AP activity and that Cys might play an indirect role in Cd²⁺ stress. The expression of AOX genes was also induced by H₂S within 3 h, but not by Cys.

Antioxidases are also one of the central elements in maintaining ROS levels in plant cells⁴⁵. We investigated the connection between the alternative respiratory pathway and antioxidant enzymes, but we found that the activities of SOD and CAT were not altered when the alternative respiratory pathway was inhibited by nPG (Fig. 6a and c), suggesting that the alternative respiratory pathway and antioxidant enzymes have independent functions in response to Cd²⁺ stress. The activities of SOD and CAT were induced by Cd²⁺ and increased Cd²⁺ resistance (Fig. 6). H₂S or Cys biosynthesis was necessary for the increase in SOD and CAT activities in response to Cd²⁺ stress because Cd²⁺-induced activities of SOD and CAT were weakened in H₂S and Cys synthesis mutants. We further studied the relationship of H₂S and Cys in this physiological process. H₂S supplementation could remedy the deficiency

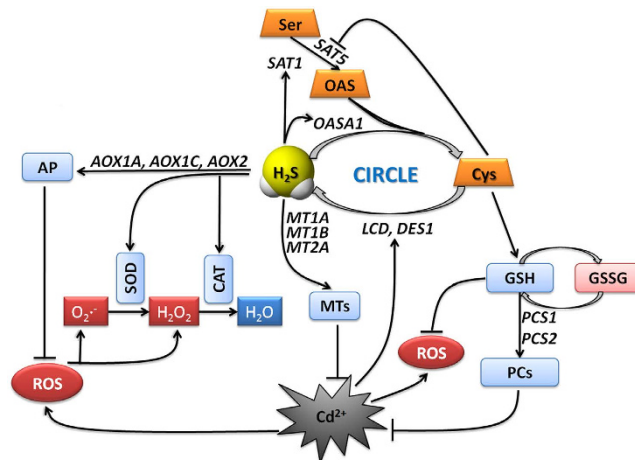


Figure 9. A diagram representing Cd^{2+} -induced toxicity and protective mechanism of the H_2S and Cys cycle system in *Arabidopsis* roots. Arrows indicate enhanced effects and hyphens indicate suppressed effects.

of Cys biosynthesis and increase the activities of SOD and CAT in *oasa1* mutants, but Cys supplementation could not. These data suggest that the activities of SOD and CAT are directly regulated by H_2S and that Cys indirectly affects the activities of SOD and CAT by promoting the generation of H_2S .

GSH performs numerous physiological functions in the plant response to heavy metal stress⁴⁶. Cys is a precursor of GSH, which stores and transports GSH via the γ -glutamyl cycle⁴⁷. In this study, supplementation with exogenous H_2S or Cys strengthened Cd^{2+} -mediated GSH elevation in WT plants (Fig. 6f). It is interesting that the effects of Cd^{2+} and H_2S were reversed in *oasa1*, but the effects of Cd^{2+} and H_2S were not altered in *lcdes1-1* (Fig. 6f). These results suggest that Cys is a direct regulatory factor of GSH, and H_2S affects GSH levels indirectly. Additionally, the GSH content was not altered by nPG (Fig. 6e), suggesting that the alternative respiratory pathway and GSH are not related in their responses to Cd^{2+} stress.

Cd^{2+} enrichment was also observed in this study (Fig. 8a). Inhibiting Cd^{2+} uptake and enhancing Cd^{2+} efflux are the main defense strategies that plant cells use to prevent Cd^{2+} toxicity. Exogenous H_2S or Cys supplementation effectively inhibited the accumulation of Cd^{2+} (Fig. 8a). When endogenous H_2S or Cys synthesis was blocked, Cd^{2+} over-accumulation occurred (Fig. 8a), suggesting that the H_2S and Cys cycle system is important for inhibiting Cd^{2+} uptake or enhancing Cd^{2+} efflux. Additionally, the effect of Cys was partly inhibited in the *lcdes1-1* mutant, implying that the role of H_2S in the H_2S and Cys cycle might be to directly regulate Cd^{2+} uptake or efflux.

The generation of chelators is also an effective pathway in plant cells for avoiding Cd^{2+} toxicity. *PCS1*, *PCS2*, *MT1A*, *MT1B* and *MT2B* are mainly expressed in roots and regulate PCs and MTs synthesis; the expression of these chelators is generally induced by numerous heavy metal ions^{42,43,48}. Interestingly, the expression of *PCS1* and *PCS2* was found to be induced by Cys in a very short time, and the expression of *MT1A*, *MT1B* and *MT2B* was induced by H_2S (Fig. 8b). However, only long-term supplementation of Cys or H_2S induced the expression of *PCS1* and *MT1A* (Fig. 8c,d). These data suggest that the generation of chelators can be regulated differently in plant cells. Cys and H_2S played different roles in the physiological process, but when combined Cys and H_2S mutually promoted the expression of chelator synthesis genes to a level higher than when they were used as separate supplements.

Based on the data described above, a signal pathway model was developed and is depicted in Fig. 9. It shows the specific roles of H_2S and Cys in regulating plant responses to Cd^{2+} stress and their interaction. H_2S is activated much earlier than Cys in plant responses to Cd^{2+} stress, acting as a secondary messenger to increase Cys accumulation by regulating the transcription levels of *SAT1* and *OASA1*. In addition, the production of H_2S might deplete the endogenous Cys pool, which might subsequently increase the expression of *SAT1* or *OASA1*. Furthermore, once the H_2S and Cys cycle is initiated, it works to maintain elevated H_2S and Cys levels. H_2S inhibits the ROS burst by promoting CP and antioxidase activities, and it weakens Cd^{2+} ion toxicity by inducing the gene expression of MTs. Cys acts as a precursor of GSH to promote GSH accumulation, which then contributes to inhibiting the ROS burst. GSH also induces genes expression of PCs, leading to raised PC activity, which counteracts Cd^{2+} ion toxicity. In sum, the H_2S and Cys cycle system is a key regulator of the response to Cd^{2+} stress in plants that acts to induce and maintain levels of bioactive molecules (H_2S , Cys, GSH, PCs, and MTs) that improve plant resistance to Cd^{2+} stress.

Materials and Methods

Plant material and chemical treatments. This study was carried out on *Arabidopsis thaliana*, including wild ecotypes Columbia (Col-0) and the *lcd* (SALK_082099), *des1-1* (SALK_103855), *lcdes1-1* and *oasa1* (SALK_074242c) mutants. Seeds were surface sterilized with 70% ethanol for 30 s and 15% sodium hypochlorite for 15 min and were washed at least five times with sterilized water before sowing on solid 1/2 Murashige and Skoog (MS) medium (pH 5.7), which contained 1% (w/v) sucrose, and 0.8% (w/v) agar. After that, the seeds were vernalized for 48 h at 4 °C. Then, the seedlings were grown in a growth room, which had the temperature set at

22 °C and a 14/10 h light/dark photoperiod under a photon flux density of 120 mmol m⁻²s⁻¹. The Arabidopsis plants used throughout this work were grown routinely in a growth chamber under 50–60% humidity.

Following 7 d growth, Arabidopsis seedlings were transferred to the following mediums: (1) 1/2 MS agar medium, (2) 1/2 MS agar medium containing 25–150 μM CdCl₂, 50 μM sodium hydrosulfide (NaHS), 1 mM Cys, or 200 μM n-propyl gallate (nPG), respectively. The H₂S donors NaHS, Cys and nPG were purchased from Sigma (USA).

Root elongation assays. Seven-day-old Arabidopsis seedlings grown on the vertical 1/2 MS agar plates were transferred to the 1/2 MS agar medium containing various chemicals for the different treatments. Root elongation was measured after 5 d of various treatments. All experiments were repeated at least three times, with photographs collected at 7 d from one representative experiment being shown. The root length was measured with ImageJ.

Electrolyte leakage assay. Measurement of ion leakage was determined according to Sairam and Srivastava (2002) with some modifications⁴³. The 7-d-old Arabidopsis seedlings were treated for 5 d on the 1/2 MS agar medium containing different chemicals. Following the treatments, the roots were collected and washed in deionized water three times to remove surface-adhered electrolytes. Then, they were immersed in 10 ml deionized water for 3 h at 25 °C in test tubes. After the incubation, the conductivity in the bathing solution was determined (C_1), and the conductivity of deionized water was also determined (C_0). The samples were heated in boiling water for 1 h before the total conductivity was measured in the bathing solution (C_2). Relative ion leakage was expressed as a percentage of the total conductivity after heating in boiling water [relative ion leakage = $(C_1 - C_0) / (C_2 - C_0) \times 100$].

MDA and GSH content assays. The chemical treatments were the same as the measurements of ion leakage. Following the treatments⁴⁹, Arabidopsis roots were collected. Lipid peroxidation of the roots was measured by estimating the MDA content according to the method of Heath and Packer. The GSH content was measured based on a previously described method⁴⁹.

Measurement of H₂S content. H₂S quantification was performed as described by Nashef *et al.*⁵⁰. The chemical treatments were the same as the methods of ion leakage. Following the treatments, the seedling roots were collected with liquid nitrogen and ground into fine powder with mortar and pestle; 0.3 g of frozen tissue was homogenized in 1 ml 100 mM potassium phosphate buffer (pH = 7), which contained 10 mM ethylenediaminetetra-acetic acid (EDTA). The homogenates were centrifuged at 15,000 × g for 20 min at 4 °C, and 100 μl of supernatant was used for the quantification of H₂S in an assay mixture containing 1,880 μl extraction buffer and 20 μl of 20 mM 5,5'-dithiobis (2-nitrobenzoic acid), for a total volume of 2 ml. The assay mixture was incubated at room temperature for 2 min, and the absorbance was read at 412 nm. H₂S was quantified based on a standard curve of known concentrations of NaHS.

Measurement of the Cys content. The chemical treatments were the same as the measurements of ion leakage. Following the treatments, Arabidopsis roots were collected. Cys can react specifically with acid ninhydrin, and the product was extracted by methylbenzene, which has a maximum absorbance at 560 nm. The reaction is highly sensitive for Cys determination. Thus, the Cys content could be determined as described previously⁵¹.

RNA isolation and qRT-PCR. Seven-day-old Arabidopsis seedlings were transferred to the 1/2 MS agar medium containing different chemicals and treated for 0–12 h. Following the treatments, roots of Arabidopsis were harvested to extract total RNA for real-time polymerase chain reaction (RT-PCR). Total RNA was extracted using an RNAPrep pure plant kit (Tiangen, Beijing) and was treated with RNase-free DNase reagent (RNase-free DNase kit, Tiangen). The total RNA was reverse-transcribed into first-strand cDNA using PrimeScript™ Reverse Transcriptase (Takara, Japan) and Oligo (dT)₁₅ primer (Takara) following the manufacturer's instructions. The samples were amplified using SYBR Green I (SYBR® Premix Ex Taq™ Kit, Takara). The housekeeping gene EF1A was used as an internal control. The thermal cycle used was as follows: 95 °C for 10 s, and 40 cycles of 95 °C for 5 s and 59 °C for 25 s. This was followed by 80 cycles of 10 s during the time elapsed at 55–95 °C. The PCR amplifications for each gene were performed in triplicate. The results were analyzed by Rotor-Gene Real-Time Analysis Software 6.1 (Build 81).

Extraction and assay of antioxidant enzymes. Seven-day-old Arabidopsis seedlings were transferred to the 1/2 MS agar medium containing different chemicals and treated for 6 h. Following the treatments, Arabidopsis roots were collected and enzymes extracted according to the method of Mostofa *et al.*⁵¹. Activities of antioxidant and glyoxalase were determined by the standard methods reported in Mostofa and Fujita⁵² for SOD (EC 1.15.1.1) and CAT (EC 1.11.1.6). The protein standard was bovine serum albumin (BSA), which was employed to determine the protein content.

Determination of H₂O₂ contents. H₂O₂ was visualized using the specific H₂O₂ fluorescent probe dichlorofluorescein diacetate (H₂DCF-DA) according to the method described by Maffei *et al.*⁵³. Seven-day-old Arabidopsis seedlings were transferred to the 1/2 MS agar medium containing different chemicals and treated for 0–24 h. Following the treatments, Arabidopsis seedlings were incubated in the reaction buffer containing 10 mM 4-(2-hydroxyethyl)-1-piperazine-ethanesulfonic acid (HEPES)-NaOH (pH 7.5) and 10 μM H₂DCF-DA for 15 min at 25 °C. Thereafter, the roots were washed three times with the HEPES-NaOH buffer (pH 7.4) prior to visualization using a laser confocal scanning microscope (Leica SM IRBE Multisync FE 1250). Excitation was at 480 nm and emission was at 520 nm. Images were processed and analyzed using the Leica Tcs SP2 software.

Statistical analysis. Each experiment was repeated at least three times and with three replications each time. Values were expressed as the mean \pm SE. Experiments that required an analysis of variance were analyzed using SPSS 17.0 for one-way analysis of variance (ANOVA) followed by Dunnett's post hoc multiple comparisons. The confidence coefficient was set at 0.05.

References

- Bolan, N. S. *et al.* Chapter Four—Cadmium Contamination and Its Risk Management in Rice. *Ecosystems Adv. Agron.* **119**, 183–273 (2013).
- Sun, H. *et al.* Association of cadmium in urine and blood with age in a general population with low environmental exposure. *Chemosphere.* **156**, 392–397 (2016).
- Kan, Q. *et al.* Nitrate reductase-mediated NO production enhances Cd accumulation in Panax notoginseng roots by affecting root cell wall properties. *J. Plant Physiol.* **193**, 64–70 (2016).
- Sandalio, L. M., Dalurzo, H. C., Gómez, M., Romero-Puertas, M. C. & del Río, L. A. Cadmium-induced changes in the growth and oxidative metabolism of pea plants. *J. Exp. Bot.* **52**, 2115–2126 (2001).
- Ortega-Villasante, C., Rellán-Álvarez, R., Del Campo, F. F., Carpena-Ruiz, R. O. & Hernández, L. E. Cellular damage induced by cadmium and mercury in *Medicago sativa*. *J. Exp. Bot.* **56**, 2239–2251 (2005).
- Wang, J. L., Li, T., Liu, G. Y., Smith, J. M. & Zhao, Z. W. Unraveling the role of dark septate endophyte (DSE) colonizing maize (*Zea mays*) under cadmium stress: physiological, cytological and genic aspects. *Sci Rep.* **6**, 22028 (2016).
- Sharma, S. S., Dietz, K. J. & Mimura, T. Vacuolar compartmentalization as indispensable component of heavy metal detoxification in plants. *Plant Cell Environ.* **39**, 1112–1126 (2016).
- Elobeid, M., Gobel, C., Feussner, I. & Polle, A. Cadmium interferes with auxin physiology and lignification in poplar. *J. Exp. Bot.* **63**, 1413–1421 (2012).
- Qin, W., Bazeille, N., Henry, E., Zhang, B., Deprez, E. & Xi, X. G. Mechanistic insight into cadmium-induced inactivation of the Bloom protein. *Sci Rep.* **6**, 26225 (2016).
- Schützendübel, A. *et al.* Cadmium-induced changes in antioxidative systems, hydrogen peroxide content, and differentiation in Scots pine roots. *Plant Physiol.* **127**, 887–898 (2001).
- Stohs, S. J. & Bagchi, D. Oxidative mechanisms in the toxicity of metal ions. *Free Radic. Biol. Med.* **18**, 321–336 (1995).
- Semane, B. *et al.* Cadmium responses in *Arabidopsis thaliana*: glutathione metabolism and antioxidative defence system. *Physiol. Plant.* **129**, 519–528 (2007).
- Migocka, M. *et al.* Cucumber metal tolerance protein CsMTP9 is a plasma membrane H⁺-coupled antiporter involved in the Mn²⁺ and Cd²⁺ efflux from root cells. *Plant J.* **84**, 1045–1058 (2015).
- Greger, M., Kabir, A. H., Landberg, T., Maity, P. J. & Lindberg, S. Silicate reduces cadmium uptake into cells of wheat. *Environ. Pollut.* **211**, 90–97 (2016).
- Vatamaniuk, O. K., Mari, S., Lang, A., Chalasani, S., Demkiv, O. L. & Rea, P. A. Phytochelatin synthase, a dipeptidyltransferase that undergoes multisite acylation with -glutamylcysteine during catalysis. *J. Biol. Chem.* **279**, 22449–22460 (2004).
- Cobbett, C. & Goldsbrough, P. Phytochelatin and metallothioneins: roles in heavy metal detoxification and homeostasis. *Annu. Rev. Plant Biol.* **53**, 159–182 (2002).
- Tan, B. H., Wong, P. T. H. & Bian, J. S. Hydrogen sulfide: a novel signaling molecule in the central nervous system. *Neurochem. Int.* **56**, 3–10 (2010).
- Papenbrock, J., Riemenschneider, A., Kamp, A., SchulzVogt, H. N. & Schmidt, A. Characterization of cysteine-degrading and H₂S-releasing enzymes of higher plants—from the field to the test tube and back. *Plant Biol.* **9**, 582–588 (2007).
- Sirko, A., Blaszczyk, A. & Liszewska, F. Overproduction of SAT and/or OASTL in transgenic plants: a survey of effects. *J. Exp. Bot.* **55**, 1881–1888 (2004).
- Kopriva, S. Regulation of sulfate assimilation in Arabidopsis and beyond. *Ann. Bot.* **97**, 479–495 (2006).
- Alvarez, C., Calo, L., Romero, L. C., Garcia, I. & Gotor, C. An O-acetylserine(thiol) lyase homolog with L-cysteine desulfhydrase activity regulates cysteine homeostasis in Arabidopsis. *Plant Physiol.* **152**, 656–669 (2010).
- Zhang, L. & Liu, J. Enhanced fatty acid accumulation in *Ischochrysis galbana* by inhibition of the mitochondrial alternative oxidase pathway under nitrogen deprivation. *Bioresour. Technol.* **211**, 783–786 (2016).
- Giraud, E. *et al.* The absence of ALTERNATIVE OXIDASE1a in Arabidopsis results in acute sensitivity to combined light and drought stress. *Plant Physiol.* **147**, 595–610 (2008).
- Korshunov, S., Imlay, K. R. & Imlay, J. A. The cytochrome bd oxidase of *Escherichia coli* prevents respiratory inhibition by endogenous and exogenous hydrogen sulfide. *Mol. Microbiol.*, doi: 10.1111/mmi. (2016).
- Takahashi, H., Kopriva, S., Giordano, M., Saito, K. & Hell, R. Sulfur Assimilation in Photosynthetic Organisms: Molecular Functions and Regulations of Transporters and Assimilatory Enzymes. *Annu. Rev. Plant Biol.* **62**, 157–184 (2011).
- Christou, A., Manganaris, G. A., Papadopoulos, I. & Fotopoulos, V. Hydrogen sulfide induces systemic tolerance to salinity and non-ionic osmotic stress in strawberry plants through modification of reactive species biosynthesis and transcriptional regulation of multiple defence pathways. *J. Exp. Bot.* **647**, 1953–1966 (2013).
- Li, J. S., Jia, H. L., Wang, J., Cao, Q. & Wen, Z. Hydrogen sulfide is involved in maintaining ion homeostasis via regulating plasma membrane Na⁺/H⁺ antiporter system in the hydrogen peroxide-dependent manner in salt-stress *Arabidopsis thaliana* root. *Protoplasma* **251**, 899–912 (2014).
- Li, Z. G., Yang, S. Z., Long, W. B., Yang, G. X. & Shen, Z. Z. Hydrogen sulfide may be a novel downstream signal molecule in nitric oxide-induced heat tolerance of maize (*Zea mays L.*) seedlings. *Plant Cell and Environ.* **36**, 1564–1572 (2013).
- Chen, J. *et al.* Hydrogen sulfide alleviates aluminum toxicity in barley seedlings. *Plant Soil* **362**, 301–318 (2013).
- Li, L., Wang, Y. & Shen, W. Roles of hydrogen sulfide and nitric oxide in the alleviation of cadmium-induced oxidative damage in alfalfa seedling roots. *BioMetals.* **25**, 617–631 (2012).
- Shi, H., Ye, T. & Chan, Z. Nitric oxide-activated hydrogen sulfide is essential for cadmium stress response in bermudagrass (*Cynodon dactylon* (L.) Pers.) *Plant Physiol. Biochem.* **74**, 99–107 (2014).
- Sun, J., Wang, R., Zhang, X., Yu, Y., Zhao, R., Li, Z. & Chen, S. Hydrogen sulfide alleviates cadmium toxicity through regulations of cadmium transport across the plasma and vacuolar membranes in *Populus euphratica* cells. *Plant Physiol. Biochem.* **65**, 67–74 (2013).
- Zhang, H. *et al.* Hydrogen sulfide promotes wheat seed germination and alleviates the oxidative damage against copper stress. *J. Integr. Plant Biol.* **50**, 1518–1529 (2008).
- Jia, H., Hu, Y., Fan, T. & Li, J. Hydrogen sulfide modulates actin-dependent auxin transport via regulating ABPs results in changing of root development in Arabidopsis. *Sci. Rep.* **5**, 8251 (2015).
- Dooley, F. D., Nair, S. P. & Ward, P. D. Increased growth and germination success in plants following hydrogen sulfide administration. *PLoS one* **8**, e62048–e62052 (2013).
- Zhang, H. *et al.* Hydrogen Sulfide Promotes Root Organogenesis in *Ipomoea batatas*, *Salix matsudana* and *Glycine max*. *J. Integr. Plant Biol.* **51**, 1086–1094 (2009).

37. López-Martín, M. C., Becana, M., Romero, L. C. & Gotor, C. Knocking Out Cytosolic Cysteine Synthesis Compromises the Antioxidant Capacity of the Cytosol to Maintain Discrete Concentrations of Hydrogen Peroxide in Arabidopsis. *Plant Physiol.* **147**, 562–572 (2008).
38. Wang, J. & Vanlerberghe, G. C. A lack of mitochondrial alternative oxidase compromises capacity to recover from severe drought stress. *Physiol. Plant* **149**, 461–473 (2013).
39. Mostofa, M. G., Rahman, A., Ansary, M. M., Watanabe, A., Fujita, M. & Tran, L. S. Hydrogen sulfide modulates cadmium-induced physiological and biochemical responses to alleviate cadmium toxicity in rice. *Sci. Rep.* **5**, 14078 (2015).
40. Mostofa, M. G., Hossain, M. A., Fujita, M. & Tran, L. S. Physiological and biochemical mechanisms associated with trehalose-induced copper-stress tolerance in rice. *Sci. Rep.* **5**, 11433 (2015).
41. Flores-Cáceres, M. L., Hattab, S., Boussetta, H., Banni, M. & Hernández, L. E. Specific mechanisms of tolerance to copper and cadmium are compromised by a limited concentration of glutathione in alfalfa plants. *Plant Sci.* **233**, 165–173 (2015).
42. Li, Y., Chen, Y. Y., Yang, S. G. & Tian, W. M. Cloning and characterization of HbMT2a, a metallothionein gene from *Hevea brasiliensis* Muell. Arg differently responds to abiotic stress and heavy metals. *Biochem. Biophys. Res. Commun.* **461**, 95–101 (2015).
43. Fang, H., Liu, Z., Jin, Z., Zhang, L., Liu, D. & Pei, Y. An emphasis of hydrogen sulfide-cysteine cycle on enhancing the tolerance to chromium stress in Arabidopsis. *Environ. Pollut.* **213**, 870–877 (2016).
44. Jian W. *et al.* Alternative oxidase pathway is involved in the exogenous SNP-elevated tolerance of *Medicago truncatula* to salt stress. *J. Plant Physiol.* **193**, 79–87 (2016).
45. Sairam, R. K. & Srivastava, G. C. Changes in antioxidant activity in subcellular fraction of tolerant and susceptible wheat genotypes in response to long term salt stress. *Plant Sci.* **162**, 897–904 (2002).
46. Freeman, J. L. *et al.* Increased glutathione biosynthesis plays a role in nickel tolerance in *Thlaspi* nickel hyperaccumulators. *Plant Cell* **16**, 2176–2191 (2004).
47. Seth, C. S. *et al.* Phytoextraction of toxic metals: a central role for glutathione. *Plant Cell Environ.* **35**, 334–346 (2012).
48. Zimeri, A. M., Dhankher, O. P., McCaig, B. & Meagher, B. M. The plant MT1 metallothioneins are stabilized by binding cadmium and are required for cadmium tolerance and accumulation. *Plant Mol. Biol.* **58**, 839–855 (2005).
49. Heath, R. L. & Packer, L. Photoperoxidation in isolated chloroplasts: I. Kinetics and stoichiometry of fatty acid peroxidation. *Arch. Biochem. Biophys.* **125**, 189–198 (1968).
50. Nashef, A. S., Osugam, D. T. & Feeney, R. E. Determination of hydrogen sulfide with 5,5'-dithiobis-(2-nitrobenzoic acid), N-ethylmaleimide, and parachloromercuribenzoate. *Anal. Biochem.* **79**, 394–405 (1977).
51. Gaitonde, M. K. A spectrophotometric method for the direct determination of cysteine in the presence of other naturally occurring amino acids. *Biochem. J.* **104**, 627–633 (1967).
52. Mostofa, M. G. & Fujita, M. Salicylic acid alleviates copper toxicity in rice (*Oryza sativa* L.) seedlings by up-regulating antioxidative and glyoxalase systems. *Ecotoxicology* **22**, 959–973 (2013).
53. Mostofa, M. G., Yoshida, N. & Fujita, M. Spermidine pretreatment enhances heat tolerance in rice seedlings through modulating antioxidative and glyoxalase systems. *Plant Growth Regul.* **73**, 31–44 (2014).

Acknowledgements

This work was supported by the Natural Science Foundation of China (NSFC No. 31400246), the China Postdoctoral Science Foundation (No. 2015T81052), Shaanxi Natural Science Basic Research Project (No. 2015JQ3087), Northwest A&F University basic research Foundation (No. 2014YB039), Natural Science Foundation of Shaanxi University of Science & Technology (No. 2016GBJ-01) and the Start-up Fund for the introduction of talent from Northwest A&F University (Z111021602). Thanks Johannes Liesche, Northwest A&F University, for language modification of the manuscript.

Author Contributions

J.S.L. and H.L.J. designed research; J.S.L. and H.L.J. performed research; X.F.W., Y.H.D. and D.L. screened mutant plants; H.L.J., W.T.S., H.F., C.Z., S.L.C. and J.J.X. analyzed data; and J.S.L. and H.L.J. wrote the paper.

Additional Information

Supplementary information accompanies this paper at <http://www.nature.com/srep>

Competing financial interests: The authors declare no competing financial interests.

How to cite this article: Jia, H. *et al.* Hydrogen sulfide - cysteine cycle system enhances cadmium tolerance through alleviating cadmium-induced oxidative stress and ion toxicity in Arabidopsis roots. *Sci. Rep.* **6**, 39702; doi: 10.1038/srep39702 (2016).

Publisher's note: Springer Nature remains neutral with regard to jurisdictional claims in published maps and institutional affiliations.



This work is licensed under a Creative Commons Attribution 4.0 International License. The images or other third party material in this article are included in the article's Creative Commons license, unless indicated otherwise in the credit line; if the material is not included under the Creative Commons license, users will need to obtain permission from the license holder to reproduce the material. To view a copy of this license, visit <http://creativecommons.org/licenses/by/4.0/>

© The Author(s) 2016