


# SCIENTIFIC REPORTS

**OPEN**

## **Corrigendum: Real-Time Control of a Neuroprosthetic Hand by Magnetoencephalographic Signals from Paralysed Patients**

Ryohei Fukuma, Takufumi Yanagisawa, Youichi Saitoh, Koichi Hosomi, Haruhiko Kishima, Takeshi Shimizu, Hisato Sugata, Hiroshi Yokoi, Masayuki Hirata, Yukiyasu Kamitani & Toshiki Yoshimine

*Scientific Reports* 6:21781; doi: 10.1038/srep21781; published online 24 February 2016; updated on 19 October 2016

This Article contains errors.

In Table 1, the heading 'Hand MMT [0–5]' should read 'MMT [0–5]'. In addition, the disease durations of subjects 6 and 9 were incorrectly given as '10' and '20' years, respectively. These should read '38' and '21'.

In Figure 3c, the upper limit of the colour bar is incorrectly given as '20', and should read '65'. The figure legend is correct. The correct Figure 3 appears below as Figure 1.

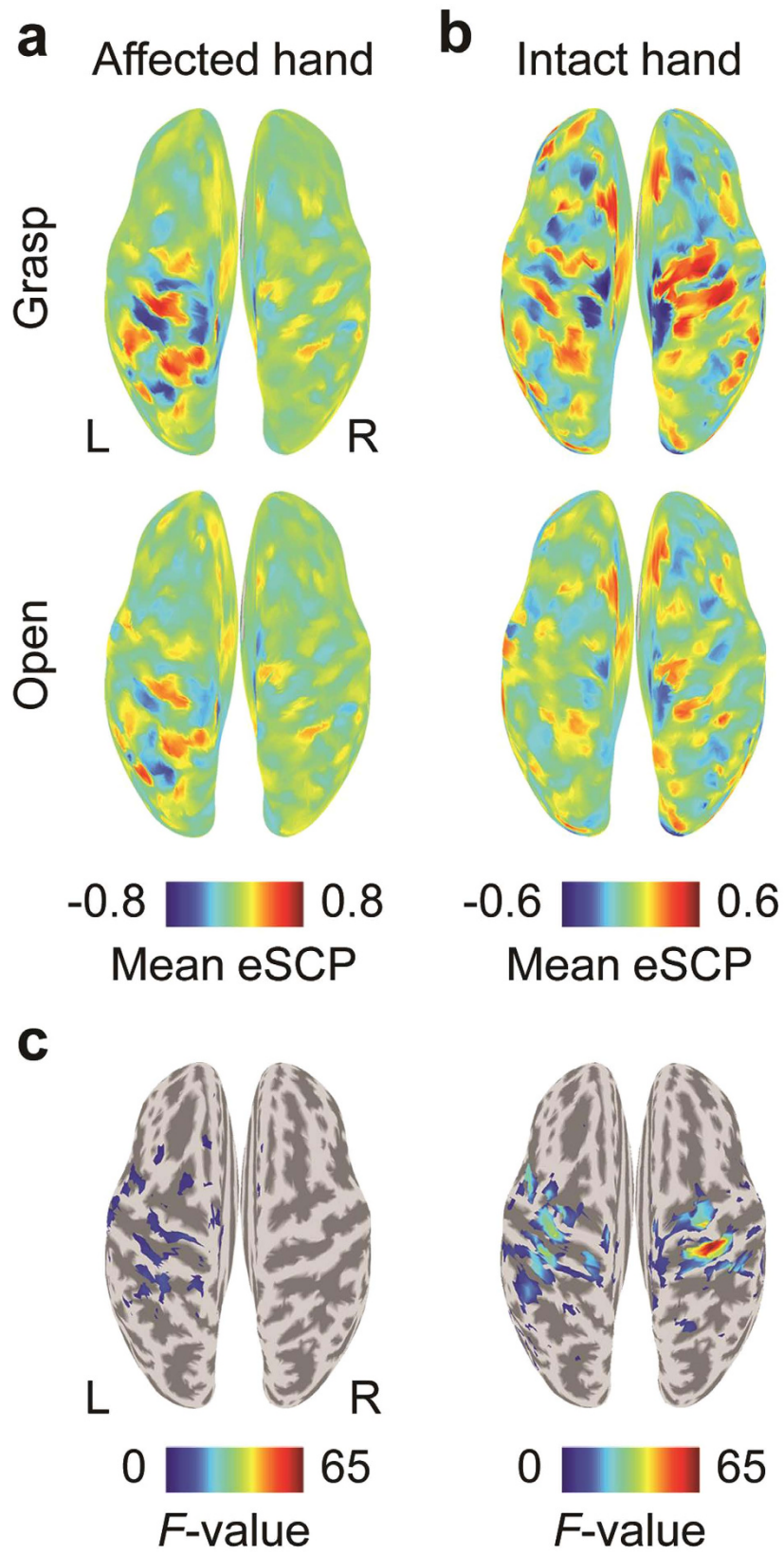


Figure 1.



This work is licensed under a Creative Commons Attribution 4.0 International License. The images or other third party material in this article are included in the article's Creative Commons license, unless indicated otherwise in the credit line; if the material is not included under the Creative Commons license, users will need to obtain permission from the license holder to reproduce the material. To view a copy of this license, visit <http://creativecommons.org/licenses/by/4.0/>

© The Author(s) 2016