

SCIENTIFIC REPORTS

OPEN

Corrigendum: Epigenetic inactivation of the CpG demethylase TET1 as a DNA methylation feedback loop in human cancers

Lili Li, Chen Li, Haitao Mao, Zhenfang Du, Wai Yee Chan, Paul Murray, Bing Luo, Anthony TC Chan, Tony SK Mok, Francis KL Chan, Richard F. Ambinder & Qian Tao

Scientific Reports 6:26591; doi: 10.1038/srep26591; published online 26 May 2016; updated on 06 October 2016

This Article contains errors in Figure 2D where the Hodgkin lymphoma ‘TET1-MSP’ methylated and unmethylated MSP bands are incorrect. The correct Figure 2D appears below as Figure 1.

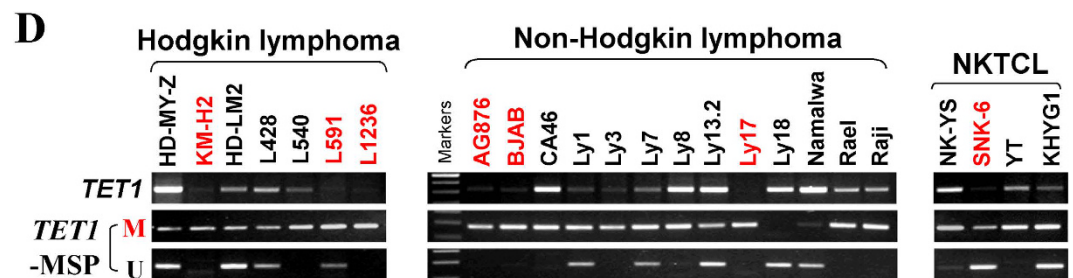



Figure 1.

 This work is licensed under a Creative Commons Attribution 4.0 International License. The images or other third party material in this article are included in the article's Creative Commons license, unless indicated otherwise in the credit line; if the material is not included under the Creative Commons license, users will need to obtain permission from the license holder to reproduce the material. To view a copy of this license, visit <http://creativecommons.org/licenses/by/4.0/>

© The Author(s) 2016