

SCIENTIFIC REPORTS

OPEN

A Concept of Cross-Ferroic Plasma Turbulence

S. Inagaki^{1,2}, T. Kobayashi³, Y. Kosuga⁴, S.-I. Itoh^{1,2}, T. Mitsuzono⁵, Y. Nagashima^{1,2}, H. Arakawa⁶, T. Yamada⁷, Y. Miwa⁵, N. Kasuya^{1,2}, M. Sasaki^{1,2}, M. Lesur¹, A. Fujisawa^{1,2} & K. Itoh^{2,3}

Received: 23 July 2015

Accepted: 08 February 2016

Published: 26 February 2016

The variety of scalar and vector fields in laboratory and nature plasmas is formed by plasma turbulence. Drift-wave fluctuations, driven by density gradients in magnetized plasmas, are known to relax the density gradient while they can generate flows. On the other hand, the sheared flow in the direction of magnetic fields causes Kelvin-Helmholtz type instabilities, which mix particle and momentum. These different types of fluctuations coexist in laboratory and nature, so that the multiple mechanisms for structural formation exist in extremely non-equilibrium plasmas. Here we report the discovery of a new order in plasma turbulence, in which chained structure formation is realized by cross-interaction between inhomogeneities of scalar and vector fields. The concept of *cross-ferroic turbulence* is developed, and the causal relation in the multiple mechanisms behind structural formation is identified, by measuring the relaxation rate and dissipation power caused by the complex turbulence-driven flux.

“Panta Rhei - everything flows and nothing lasts (Heraclitus)”, is true in our universe, because one structure that decays is generated after another. The variety of scalar and vector fields in nature is formed by plasma turbulence¹. Drift-wave fluctuations², which are excited by density gradient in magnetized plasmas, play important roles in turbulent structure formation in laboratory plasmas (such as for fusion-oriented research). Drift waves drive cross-field flux to generate, e.g. zonal flows and zonal magnetic fields, which circumnavigate the main magnetic field^{1,3,4}. On the other hand, the sheared flow in the direction of magnetic fields is predicted to cause Kelvin-Helmholtz type instability⁵ (D’Angelo mode⁶). This instability is considered to be a key element in understanding the turbulent transport in space plasmas. Both drift wave and D’Angelo mode fluctuations induce cross-field fluxes of particle and momentum, and the interferences and competition between gradients of different fields (density, azimuthal and axial velocities) take place^{1,2,5,7,8}. (Concerning the flow-shear driven mode, although it was identified experimentally^{9,10}, direct interference between particle and density fluxes associated with this mode has not been measured.) Thus, there is a central problem, i.e., what would happen if both the pressure-gradient driven turbulence and flow-shear-driven turbulence coexist simultaneously? How does it impact structural formation in extremely non-equilibrium plasmas? Here we report the discovery of a new order in cross-ferroic turbulence, in which chained structure formation is realized by cross-interaction between different inhomogeneities of scalar and vector fields. Drift-wave fluctuations cause cross-field flux of momentum, which enhances the velocity gradient. The enhanced velocity gradient excites Kelvin-Helmholtz type instability, which causes an up-hill flux of particles in the strong-velocity-shear region. The causal relation in the competing structure formations is identified, by measuring the relaxation rate and dissipation power in the complex turbulence-driven flux.

Results

The interference and competing formation of large-scale orders are experimentally identified on the linear magnetized plasma in PANTA (Plasma Assembly for Nonlinear Turbulence Analysis)¹¹. A homogeneous axial (z) magnetic field of $B = 0.09$ T confines plasma in the radial (r) direction. The azimuthal (θ) direction, which

¹Research Institute for Applied Mechanics, Kyushu University, 6-1 Kasuga-Koen, Kasuga-city, Fukuoka 816-8580, Japan. ²Research Center for Plasma Turbulence, Kyushu University, 6-1 Kasuga-Koen, Kasuga-city, Fukuoka 816-8580 Japan. ³National Institute for Fusion Science, 322-6 Oroshi-cho, Toki-city, Gifu 509-5292, Japan. ⁴Institute for Advanced Study, Kyushu University, 6-10-1 Hakozaki, Higashi-ku, 812-8581, Fukuoka Japan. ⁵Interdisciplinary Graduate School of Engineering Sciences, Kyushu University, 6-1 Kasuga-Koen, Kasuga-city, Fukuoka 816-8580, Japan. ⁶Teikyo University, 6-22 Misaki-machi, Omuta-city, Fukuoka 836-8505, Japan. ⁷Faculty of Arts and Science, Kyushu University, 744 Motoooka, Nishi-ku, Fukuoka 819-0395, Japan. Correspondence and requests for materials should be addressed to S.I. (email: inagaki@riam.kyushu-u.ac.jp)

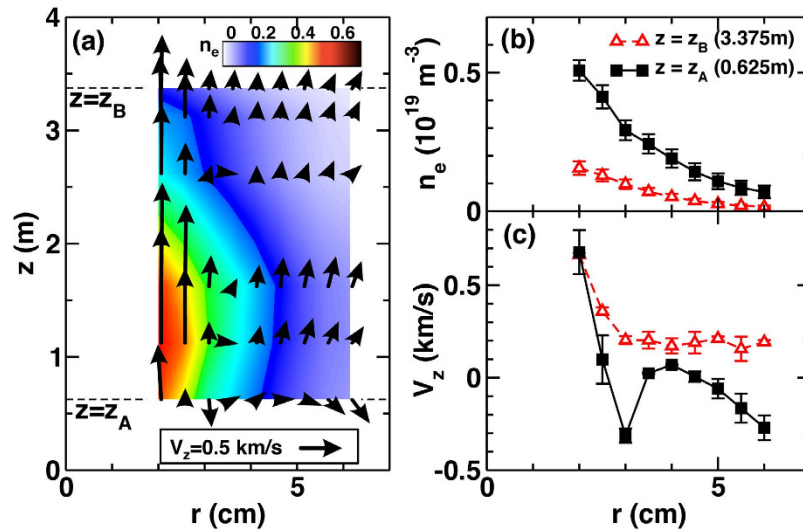


Figure 1. Structure formation in magnetized plasma. Contour plot of density and projected view of flow vector field on the r - z plane (a). Radial profiles of density (b) and axial flow velocity (c) at two different axial locations (z_A , z_B).

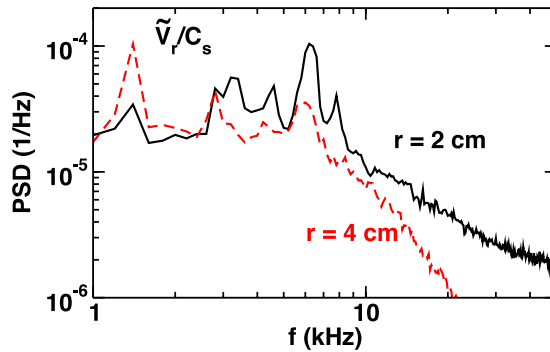


Figure 2. Power spectrum density of radial flow velocity at the inner ($r = 2$ cm) and outer ($r = 4$ cm) regions of plasma column.

corresponds to the electron diamagnetic direction, is defined as right-hand direction of z . A helicon plasma source is located at one side of a vessel, where a double loop antenna on a quartz tube (radius 5 cm, located at $z = 0$ m) is installed. Argon gas at 0.1 Pa is fed in the quartz tube and is ionized by 2.7 kW of 7 MHz rf waves from an antenna on the tube. On the other side of the vessel, the plasma is terminated by an endplate (stainless steel). This boundary condition (source at one end and metal plate at the other end) induces a plasma flow and weak gradient of electron pressure in the direction of the magnetic field, and determines the axial mode structure of the drift wave. In the region of $z < 2.5$ m, the cross-field transport by turbulence is dominant loss channel of plasma, and the plasma weakly varies along the field line. Typical plasma parameters are as follows: plasma radius $a \sim 5$ cm, plasma length $L \sim 4$ m, electron density $\langle n_e \rangle \sim 1 \times 10^{19} \text{ m}^{-3}$, electron temperature $\langle T_e \rangle \sim 3$ eV, and ion temperature $\langle T_i \rangle \sim 0.3$ eV, where $\langle \rangle$ denotes long time average. A 4-tips probe is used to measure scalar-fields (n_e , T_e) and flow vector-fields (V_r , V_θ , V_z) (see ‘Methods’). The fluctuation component of a general quantity A is defined as $\tilde{A} = A - \langle A \rangle$. The axial location of the probe can be translocated to $z = 0.625, 1.125, 1.625, 2.625, 3.125, 3.375$ m in a shot by shot manner.

Figure 1(a) illustrates the density profile and time-averaged plasma flow (arrows) on the r - z plane. Figure 1(b,c) show radial profiles of density and axial flow at two axial locations, $z_A = 0.625$ m and $z_B = 3.375$ m. A striking observation is that the particle flux is inward (up-gradient) and the axial flow is reversed in some area (e.g., near center at $z = z_A$).

These complex behaviors of flow are induced by fluctuations. The spatiotemporal structure of fluctuations in the PANTA plasma is measured by a 64-channel probe array¹². Figure 2 indicates that the frequencies of the strongest coherent peaks in the power spectrum of \tilde{V}_r at $r = 4$ cm are 2.8 kHz (which satisfies the dispersion relation of drift waves) and 1.2 kHz (a mediator of the streamer¹²). In contrast, at $r = 2$ cm, the peak of spectrum appears at 6.5 kHz, and the higher frequency broadband modes are enhanced compared to that at $r = 4$ cm. The peak at 6.5 kHz is considered to be a D’Angelo mode (the details are discussed later).

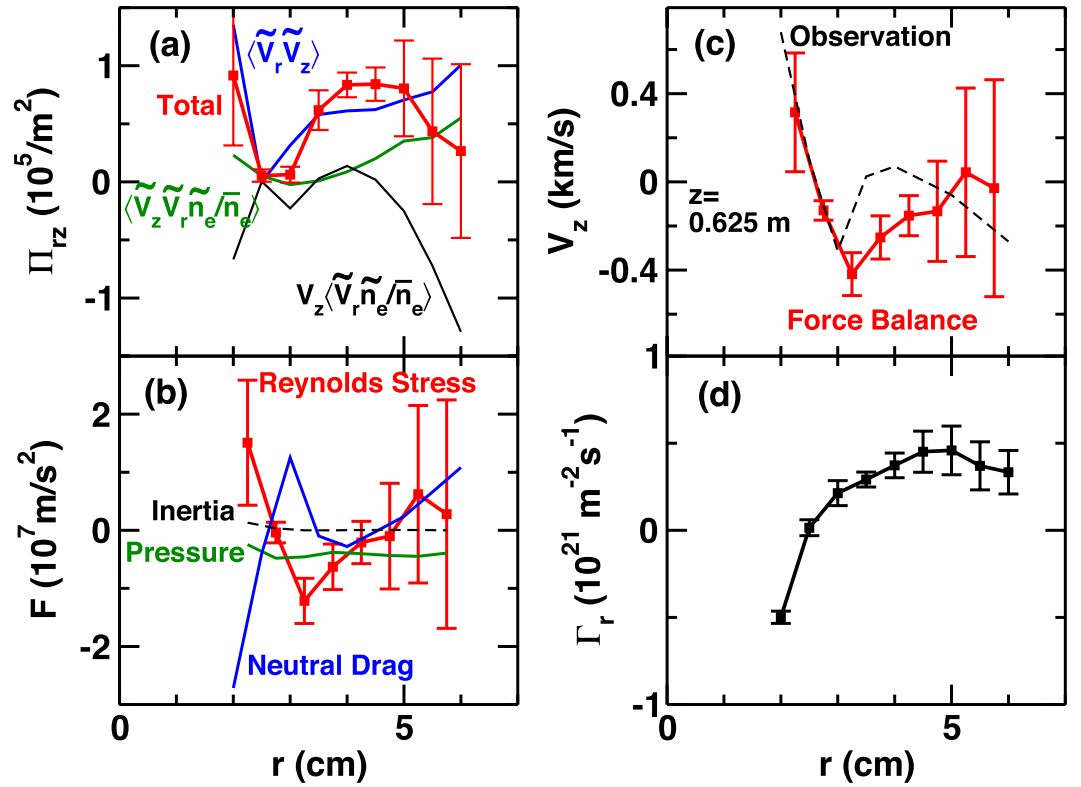


Figure 3. Radial profiles (at $z = z_A$) of (a) Reynolds stress, (b) force density, (c) axial flow velocity and (d) radial particle flux.

The momentum and particle transport driven by fluctuations are shown in Fig. 3 (at $z = z_A$). Here Reynolds stress is calculated as¹³,

$$\Pi_{rz} = \langle \tilde{V}_r \tilde{V}_z \rangle + \bar{V}_z \langle \tilde{V}_r \tilde{n}_e \rangle / \bar{n}_e + \langle \tilde{n}_e \tilde{V}_r \tilde{V}_z \rangle / \bar{n}_e, \quad (1)$$

where $\bar{n}_e \equiv \langle n_e \rangle$. The first, second and third terms are shown in Fig. 3(a). The total Reynolds stress has a dip around $r = 2.5$ – 3 cm. Thus the opposite of the divergence of Reynolds stress, $-(r^{-1} \partial(r \Pi_{rz}) / \partial r)$, i.e. the driving force of the flow, is negative in the region of $r = 3$ – 4 cm, where the inversion of axial flow is observed. The four terms in the force balance equation, $0 = -V_z \frac{\partial V_z}{\partial z} - \frac{\partial p}{\partial z} - m_i n_i \frac{\partial(r \Pi_{rz})}{r \partial r} - m_i n_i \nu_{in} V_z$, (where p is total pressure, m_i is the ion mass, ν_{in} is the ion-neutral collision frequency) are shown in Fig. 3(b). The inertia term $V_z \partial V_z / \partial z$ is negligibly small compared to the other terms in the region of measurement (Fig. 1(a)). The parallel pressure gradient term is also small at this location ($z = z_A$). Hence the dominant drive of the flow is the Reynolds stress term, which balances with neutral drag to determine V_z . We substitute a neutral drag coefficient $\nu_{in} = 40$ kHz, which is assumed to be constant over the plasma column and is evaluated based on neutral pressure measurement with an ionization gauge¹⁴. The V_z estimated by force balance (dotted line in Fig. 3(c)) is consistent with the observed steep gradient and inversion of flow near the center ($r = 2$ – 3 cm). This inversion of axial flow in Fig. 1(c) is caused by the Reynolds stress of drift-wave fluctuations. Drift-waves are excited by radial density gradient and drive an outward particle flux in the outer portion of plasma ($r > 2.5$ cm) as shown in Fig. 3(d). The outward flux relaxes the density gradient. On the other hand, an inward particle flux is generated at $r = 2$ cm by D'Angelo mode, which is excited by the steep gradient of velocity near the center. The inward flux steepens the density profile in the central region. This is a *cross-ferroic* structure formation via plasma turbulence, in the sense that different fields (density and velocity) and corresponding fluxes (particle and momentum) cross-interact.

The force balance is also evaluated at $z = 1.123$ m. The Reynolds force plays a dominant role again in the flow-drive terms. In the region ($z < 2$ m), the turbulence driven-*radial* flux is dominant over the loss along the field line as the relaxation channel of particle/mass. The calculation is compared with observations as shown in Fig. 4. There is small discrepancy (off-set) in the magnitude between the observation and calculation. This originates from uncertainty of the estimation of density profile of neutral particle in the model. Although there is uncertainty in the evaluation of neutral drag term, the calculated flow is consistent with the observation qualitatively in that: 1) Strong axial flow and shear layer is formed in the central region. 2) The dip of the axial flow is located at around $r = 3$ cm. We thus stress that the picture of structure formation by turbulence holds in wider region along the field line.

This chained structure formation can be understood quantitatively by analyzing the stability condition of D'Angelo⁶. The instability condition is obtained via a fluid model as $|\langle V_z \rangle'| > |\langle V_z \rangle_c|$, where

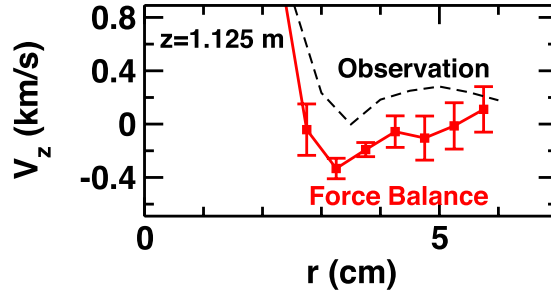


Figure 4. Radial profiles of calculated- and observed-axial flow velocity at $z = 1.125$ m.

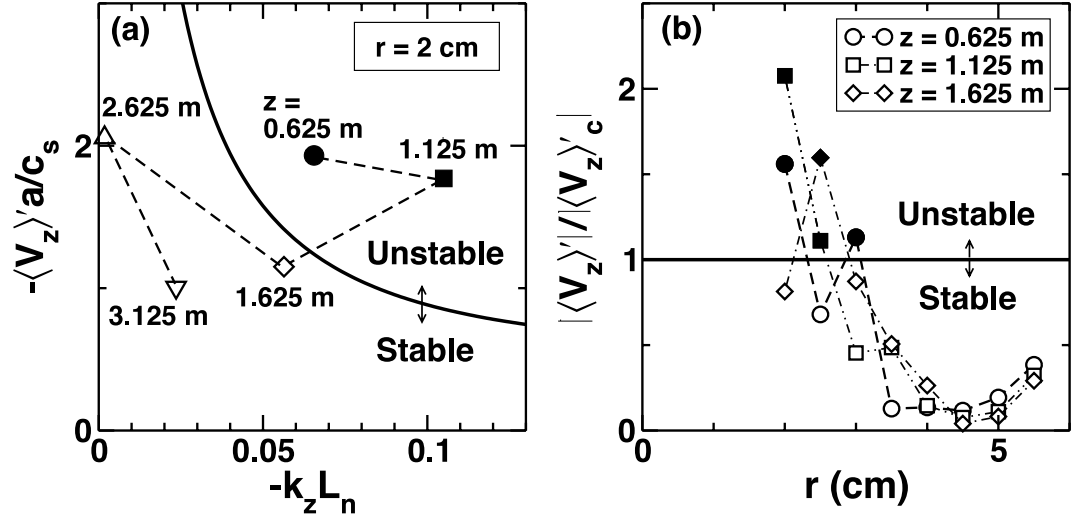


Figure 5. Stability diagram for D'Angelo mode. Diagram on the $k_z L_n - \langle V_z \rangle' a/c_s$ plane where L_n is the density gradient scale length (a). Radial profiles of normalized axial flow gradient at three different z -locations (b). Solid lines denote the stability boundary, above which the theoretical model predicts instability. Symbols denote experimental observations.

$$\langle V_z \rangle'_c = \frac{k_z c_s}{\rho_s k_\theta} + \frac{\omega_{*e}^2}{4k_z c_s \rho_s k_\theta (1 + k_\perp^2 \rho_s^2)}. \quad (2)$$

Here, c_s is the ion sound speed, ρ_s is the ion sound Larmor radius, ω_{*e} is the drift wave frequency, $k_\perp = \sqrt{k_r^2 + k_\theta^2}$, and $\langle V_z \rangle'$ denotes $\partial \langle V_z \rangle / \partial r^{15}$. Figure 5 shows the stability diagram for experimental parameters, $k_\theta \rho_s = 1$. D'Angelo mode can be unstable in inner (2–3 cm) regions close to the source region ($z = 0.625, 1.125$ m). When the velocity profile is monotonic and the gradient is weak (as is the case at $z = 3.375$ m in Fig. 1(c)), the D'Angelo mode is linearly stable. When the drift-wave and D'Angelo mode fluctuations coexist, the interference of particle and momentum fluxes takes place. The result of quasi-linear theory for particle and momentum fluxes is:

$$\frac{\Gamma_n}{n_0 c_s} = \sum_k k_\theta \rho_s \frac{-\omega + \omega_{*e}}{k_z^2 D_z} \left| \frac{e\tilde{\phi}_k}{T_e} \right|^2 + \sum_k k_\theta \rho_s \frac{c_s^2 k_z^2 - c_s k_z \rho_s k_z \langle v_z \rangle'}{k_z^2 D_z \omega} \left| \frac{e\tilde{\phi}_k}{T_e} \right|^2, \quad (3)$$

$$\frac{\Pi_{rz}}{c_s^2} = \sum_k k_\theta \rho_s \frac{(-\omega + \omega_{*e}) c_s k_z}{k_z^2 D_z \omega} \left| \frac{e\tilde{\phi}_k}{T_e} \right|^2 + \sum_k k_\theta \rho_s \frac{c_s k_z - \rho_s k_\theta \langle v_z \rangle'}{\gamma_{KH}} \left| \frac{e\tilde{\phi}_k}{T_e} \right|^2 \Theta(\gamma_{KH}), \quad (4)$$

where ϕ_k is the potential fluctuation of both modes and $D_z = v_{th,e}^2 / \nu_{ei}$, Θ is the step function, and $\gamma_{KH} = \sqrt{4(1 + k_\perp^2 \rho_s^2)(k_z c_s k_\theta \rho_s \langle V_z \rangle' - k_z^2 \rho_s^2) - \omega_{*e}^2}$ is the growth rate of the D'Angelo mode. The first terms in the RHS of Eq. (3) and (4) are the effects from density gradient, and the second terms are driven by $\langle V_z \rangle'$. The second term in the RHS of Eq. (3) is always negative (i.e., the particle flux is up-hill) for unstable D'Angelo mode ($k_z k_\theta \langle V_z \rangle' > 0$). Thus, the net particle flux can be inward when this term becomes dominant, i.e. parallel flow

shear dominates the fluctuations. In turn, while releasing free energy stored in ∇n_e , the drift waves exert Reynolds stress to drive macroscopic flows. The momentum flow by ∇n_e -driven drift-wave turbulence has been discussed in the literature^{13,16,17}. However, the present observation indicates, for the first time, interferences between fluxes of particle and axial momentum. We found a chained interaction in the observed turbulence. That is, the drift wave induces momentum flux, which reverses the flow direction. The enhanced velocity gradient excites the D'Angelo mode, which is stable without flow reversal (for the present parameters). D'Angelo mode causes an up-hill particle flux near the axis.

Discussion

The primary origin in this chained structural formation is examined via the rate of dissipations^{18,19}. Each energy relaxation rate W_j associated with the j -th turbulence-driven flow V_j ($j = r, \theta, z$), is evaluated from the volume integral of $W_j = F_j V_j$, where F is the force density, $\mathbf{F} = (-\partial p_e / \partial r, -n_i m_i \partial(r \Pi_{r\theta}) / r \partial r, -n_i m_i \partial(r \Pi_{r\theta}) / r \partial r)$. The energy relaxation rates (W_r, W_θ, W_z) are calculated as (76 W, 0.16 W, 11 W), respectively. These values are obtained by integrating the power density over a volume ($0.625 \text{ m} < z < 3.375 \text{ m}$, $2 \text{ cm} < r < 6 \text{ cm}$, $0 < \theta < 2\pi$). The dissipation power of fluctuation energy, W_{turb} , is evaluated by the volume integral of $n_i m_i \tilde{V}^2 / 2\tau_{\text{corr}}$. Here the correlation time of turbulence is estimated as $\tau_{\text{corr}} \sim 1 \text{ ms}$ from Fig. 2, and W_{turb} is estimated as 4.1 W. From these evaluations, we find that $W_r \gg W_z \sim W_{\text{turb}} \gg W_\theta$. The power W_r is dominant and thus the main relaxation channel of turbulent processes is the decay of density profile via radial flow.

In conclusion, in *cross-ferroic turbulence*, we analyzed the turbulent structural formation of scalar and vector fields of extremely nonequilibrium magnetized plasma. The results show elements in *cross-ferroic turbulence*: (i) Scalar-fields and vector-fields spontaneously produce global-scale orders. (ii) Both fields interfere with each other, yielding a chained structure in a selected region of plasma. (iii) The dominant cause can be detected by evaluating the non-linear relaxation rate. Namely, the drift-wave fluctuations drive momentum transport, which generates the inversion and strong shear of axial flow in the central region. The enhanced gradient of flow velocity, in turn, drives the D'Angelo mode, which causes particle pinch and collimates the plasma density in the central region.

Methods

4-tips probe measurement. Two tips are aligned in the axial direction, to measure the axial velocity, $\langle V_z \rangle$ and \tilde{V}_z , with Mach probe technique. The other two are coordinated in the azimuthal direction for radial velocity measurement ($\langle V_r \rangle$ and \tilde{V}_r), through the difference of floating potentials, ϕ_f . The axial flow velocity is evaluated as $V_z = c_s (2T_e/T_i)^{1/2} (I_u - I_d)/(I_u + I_d)^{20}$, where I_u and I_d denote ion saturation currents in the upstream and downstream side, respectively. An alternative model to evaluate the flow velocity yields identical results. The upstream tip and downstream tip are exchanged in a shot-by-shot manner to balance the small individual variability of tips. The error bars in the Reynolds force term in Fig. 3 are originated from the asymmetry of the tips. Double-probe method is also applied by using a pair of tips, where $\langle T_e \rangle$ and $\langle n_e \rangle$ are evaluated by using similar discharges. The ion temperature of $\langle T_i \rangle \sim 0.3 \text{ eV}$ is measured by use of an ion sensitive probe. The long time-averaged potential $\langle \phi \rangle$ is estimated from the floating potential $\langle \phi_f \rangle$, while considering the impact of $\langle T_e \rangle$. Relative density fluctuations are provided by relative ion saturation current fluctuations, as $\tilde{n}_e/\langle n_e \rangle = \tilde{I}_{is}/\langle I_{is} \rangle$. The temperature fluctuation amplitude $(\tilde{T}_e/\langle T_e \rangle)$ of the drift-wave is evaluated as $\sim 10\%$ of $\tilde{n}_e/\langle n_e \rangle$ and $e\phi_f/\langle T_e \rangle$ by using a triple-probe method in PANTA²¹. In this study, the temperature fluctuation is not monitored but taken into account in the measurement error for evaluating the level of density and flow velocity fluctuations. The measurement errors by temperature fluctuation are estimated to be at most 5% for \tilde{n}_e and 50% for ϕ_f , respectively. The probe head is movable ($r > 2 \text{ cm}$), without disturbing plasma turbulence.

References

1. Diamond, P. H., Itoh, S.-I., Itoh, K. & Hahm, T. S. Zonal flows in plasma—a review. *Plasma Phys. Control. Fusion* **47**, R35 (2005).
2. Kadomtsev, B. B. *Plasma Turbulence* Academic, New York, 78–106 (1965).
3. Fujisawa, A. *et al.* Identification of Zonal Flows in a Toroidal Plasma. *Phys. Rev. Lett.* **93**, 165001 (2004).
4. Fujisawa, A. *et al.* Experimental Evidence of a Zonal Magnetic Field in a Toroidal Plasma. *Phys. Rev. Lett.* **98**, 165001 (2007).
5. Amatucci, W. E. Inhomogeneous plasma flows: A review of *in situ* observations and laboratory experiments. *J. Geophys. Res.* **104**, 14481 (1999).
6. D'Angelo, N. Kelvin—Helmholtz Instability in a Fully Ionized Plasma in a Magnetic Field. *Phys. Fluids* **8**, 1748 (1965).
7. Bai, L., Fukuyama, A. & Uchida, M. Flow shear stabilization of a hybrid dissipative trapped electron-ion temperature gradient mode in tokamaks. *Plasma Phys. Control. Fusion* **40**, 785 (1998).
8. Hasegawa, H. *et al.* Transport of solar wind into Earth's magnetosphere through rolled-up Kelvin–Helmholtz vortices. *Nature* **430**, 755 (2004).
9. Agrimson, E., D'Angelo, N. & Merlino, R. L. Excitation of Ion-Acoustic-Like Waves by Subcritical Currents in a Plasma Having Equal Electron and Ion Temperatures. *Phys. Rev. Lett.* **86**, 5282 (2001).
10. Kaneko, T., Tsunoyama, H. & Hatakeyama, R. Drift-Wave Instability Excited by Field-Aligned Ion Flow Velocity Shear in the Absence of Electron Current. *Phys. Rev. Lett.* **90**, 125001 (2003).
11. Yamada, T. *et al.* End plate biasing experiments in linear magnetized plasmas. *Nucl. Fusion* **54**, 114010 (2014).
12. Yamada, T. *et al.* Anatomy of plasma turbulence. *Nature Phys.* **4**, 721 (2008).
13. Diamond, P. H. *et al.* An overview of intrinsic torque and momentum transport bifurcations in toroidal plasmas. *Nucl. Fusion* **53**, 104019 (2013).
14. Nagashima, Y. *et al.* Observation of the parametric-modulational instability between the drift-wave fluctuation and azimuthally symmetric sheared radial electric field oscillation in a cylindrical laboratory plasma. *Phys. Plasmas* **16**, 020706 (2009).
15. Kosuga, Y., Itoh, S.-I. & Itoh, K. Density peaking by parallel flow shear driven instability in PANTA. *Plasma Fusion Res.* **10**, 3401024 (2015).
16. Mattor, N. & Diamond, P. H. Momentum and thermal transport in neutral-beam-heated tokamaks. *Phys. Fluids* **31**, 1180 (1988).
17. Angioni, C. *et al.* Intrinsic Toroidal Rotation, Density Peaking, and Turbulence Regimes in the Core of Tokamak Plasmas. *Phys. Rev. Lett.* **107**, 215003 (2011).
18. Itoh, K. & Itoh, S.-I. Entropy Production and Inward Heat Pinch of Plasma. *J. Phys. Soc. Jpn.* **65**, 468 (1996).
19. Kosuga, Y. *et al.* On the efficiency of intrinsic rotation generation in tokamaks. *Phys. Plasmas* **17**, 102313 (2010).

20. Hudis, M. & Lidsky, L. M. Directional Langmuir Probe, *J. Appl. Phys.* **41**, 5011 (1970).
21. Kawashima, K. *et al.* Evaluation of Electron Temperature Fluctuations Using Two Different Probe Techniques in Plasma Assembly for Nonlinear Turbulence Analysis (PANTA). *Plasma Fusion Res.* **6**, 2406118 (2011).

Acknowledgements

We are grateful to P. H. Diamond, A. Fukuyama and G. R. Tynan for useful discussion. This work is partly supported by the Grant-in-Aid for Scientific Research of JSPF, Japan (15H02335, 15H02155, 23244113) the collaboration programs of RIAM Kyushu University and of the National Institute for Fusion Science (NIFS13KOCT001), and Asada Science Foundation.

Author Contributions

S.I., T.K., T.M., Y.N., H.A., T.Y. and M.Y. carried out the experiments and analyzed the data. S.I.I. planned the research. Y.K., N.K., M.S. and M.L. carried out the theory and simulation. A.F. and K.I. analyzed the data.

Additional Information

Competing financial interests: The authors declare no competing financial interests.

How to cite this article: Inagaki, S. *et al.* A Concept of Cross-Ferroic Plasma Turbulence. *Sci. Rep.* **6**, 22189; doi: 10.1038/srep22189 (2016).



This work is licensed under a Creative Commons Attribution 4.0 International License. The images or other third party material in this article are included in the article's Creative Commons license, unless indicated otherwise in the credit line; if the material is not included under the Creative Commons license, users will need to obtain permission from the license holder to reproduce the material. To view a copy of this license, visit <http://creativecommons.org/licenses/by/4.0/>