



OPEN

# Author Correction: Dysfunctional EAT thickness may promote maladaptive heart remodeling in CVD patients through the ST2-IL33 system, directly related to EPAC protein expression

Elena Vianello , Elena Dozio , Francesco Bandera, Gerd Schmitz, Manuela Nebuloni, Erika Longhi, Lorenza Tacchini, Marco Guazzi & Massimiliano Marco Corsi Romanelli

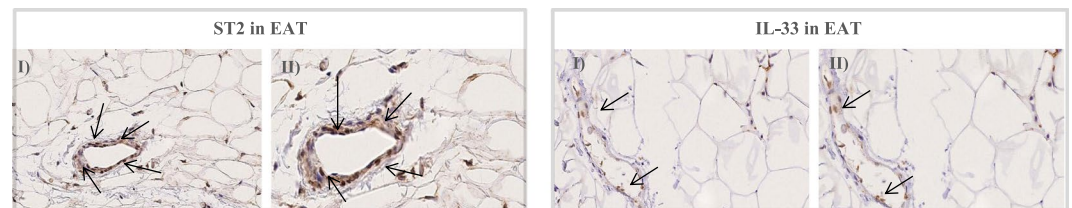
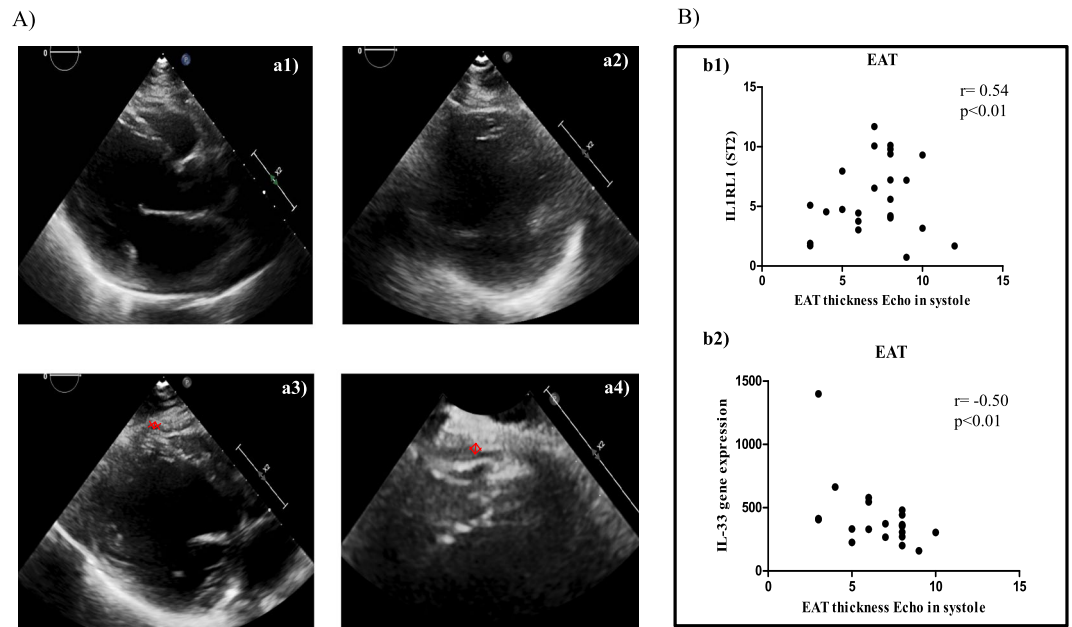
Correction to: *Scientific Reports* <https://doi.org/10.1038/s41598-019-46676-w>, published online 17 July 2019

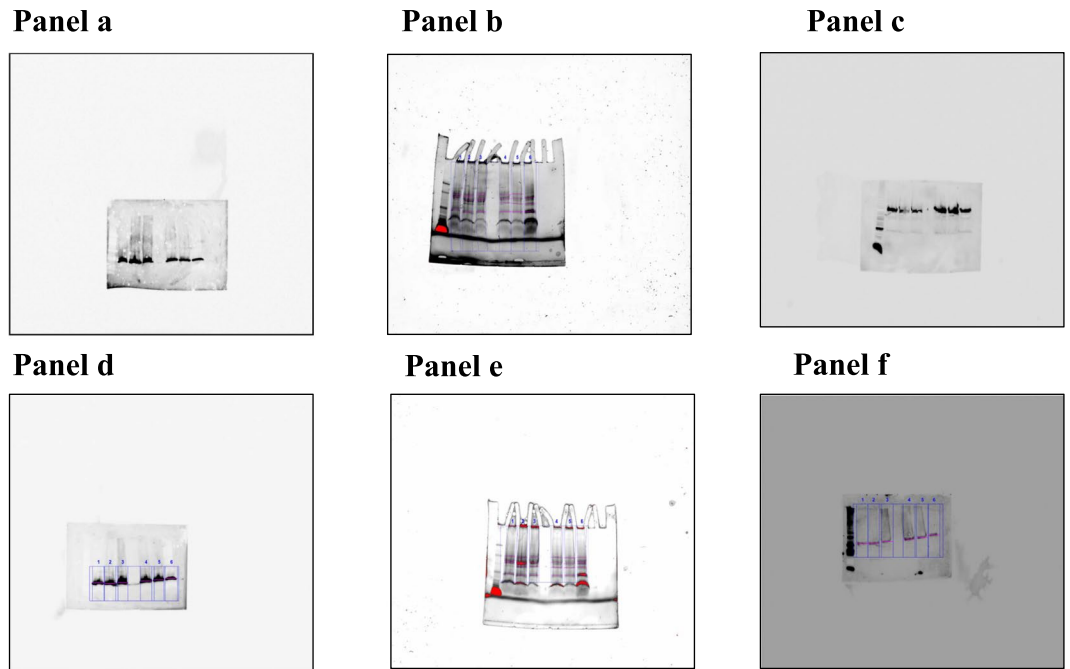
This Article contains errors. In Figure 1a, the incorrect image was used for panel a3, and the labelling of these panels was inconsistent. The correct Figure and Legend appears below, in Fig. 1.

The scale bars provided in Figure 2c are incorrect. The correct Figure 2c appears below as Fig. 2, with information on magnification provided in the legend.

The Supplementary Information did not include full-length gel images. Uncropped images for gels used in Figure 2b and 3b are provided below as Fig. 3.

Published online: 21 January 2020





**Figure 3.** (**Panel a**) shows the full gel provided in Figure 3a of the Article as EPAC1; (**Panel b**) shows the stain-free gel shown in Figures 2b and 3a of the Article, and used as normalizer for ST2 and EPAC1 immunoblots after stripping phase; (**Panel c**) shows the full membrane provided in Figure 2b of the Article as ST2; (**Panel d**) shows the full membrane provided in Figure 3a of the Article as EPAC2; (**Panel e**) shows the gel for a stain free gel shown in membrane provided in Figures and 2b and 3a of the Article, and used as normalizer for IL-33 and EPAC2 immunoblots after stripping phase; (**Panel f**) shows the full gel provided in Figure 2b of the Article as IL-33.



**Open Access** This article is licensed under a Creative Commons Attribution 4.0 International License, which permits use, sharing, adaptation, distribution and reproduction in any medium or format, as long as you give appropriate credit to the original author(s) and the source, provide a link to the Creative Commons license, and indicate if changes were made. The images or other third party material in this article are included in the article's Creative Commons license, unless indicated otherwise in a credit line to the material. If material is not included in the article's Creative Commons license and your intended use is not permitted by statutory regulation or exceeds the permitted use, you will need to obtain permission directly from the copyright holder. To view a copy of this license, visit <http://creativecommons.org/licenses/by/4.0/>.

© The Author(s) 2020