

SCIENTIFIC REPORTS



OPEN

Author Correction: DNA metabarcoding and morphological macroinvertebrate metrics reveal the same changes in boreal watersheds across an environmental gradient

Caroline E. Emilson¹, Dean G. Thompson¹, Lisa A. Venier¹, Teresita M. Porter^{1,2}, Tom Swystun¹, Derek Chartrand¹, Scott Capell¹ & Mehrdad Hajibabaei²

Correction to: *Scientific Reports* <https://doi.org/10.1038/s41598-017-13157-x>, published online 06 October 2017

This Article and the accompanying Supplementary Information file contain a repeated typographical error where,

“CO1 BE”

should read:

“CO1 BR5”

Additionally, in the Methods section under the subheading ‘DNA Metabarcoding analysis’,

“The CO1 BE marker from each sample was amplified through a two-step polymerase chain reaction (PCR) regime using the B forward and E reverse³⁵...”

should read:

“The CO1 BR5 marker from each sample was amplified through a two-step polymerase chain reaction (PCR) regime using the B forward and ArR5 reverse¹⁴...”

Finally, this Article contains an error in Supplementary Figure S1, where the order labels are misaligned with respect to the taxa. The correct Figure S1 appears below as Figure 1.

¹Natural Resources Canada, Canadian Forest Service, Great Lakes Forestry Centre, 1219 Queen St. East, Sault Ste. Marie, P6A 2E5, Canada. ²Centre for Biodiversity Genomics @ Biodiversity Institute of Ontario & Department of Integrative Biology, University of Guelph, 50 Stone Road East, Guelph, N1G 2W1, Canada. Correspondence and requests for materials should be addressed to C.E.E. (email: caroline.emilson@gmail.com) or M.H. (email: mhajibab@uoguelph.ca)

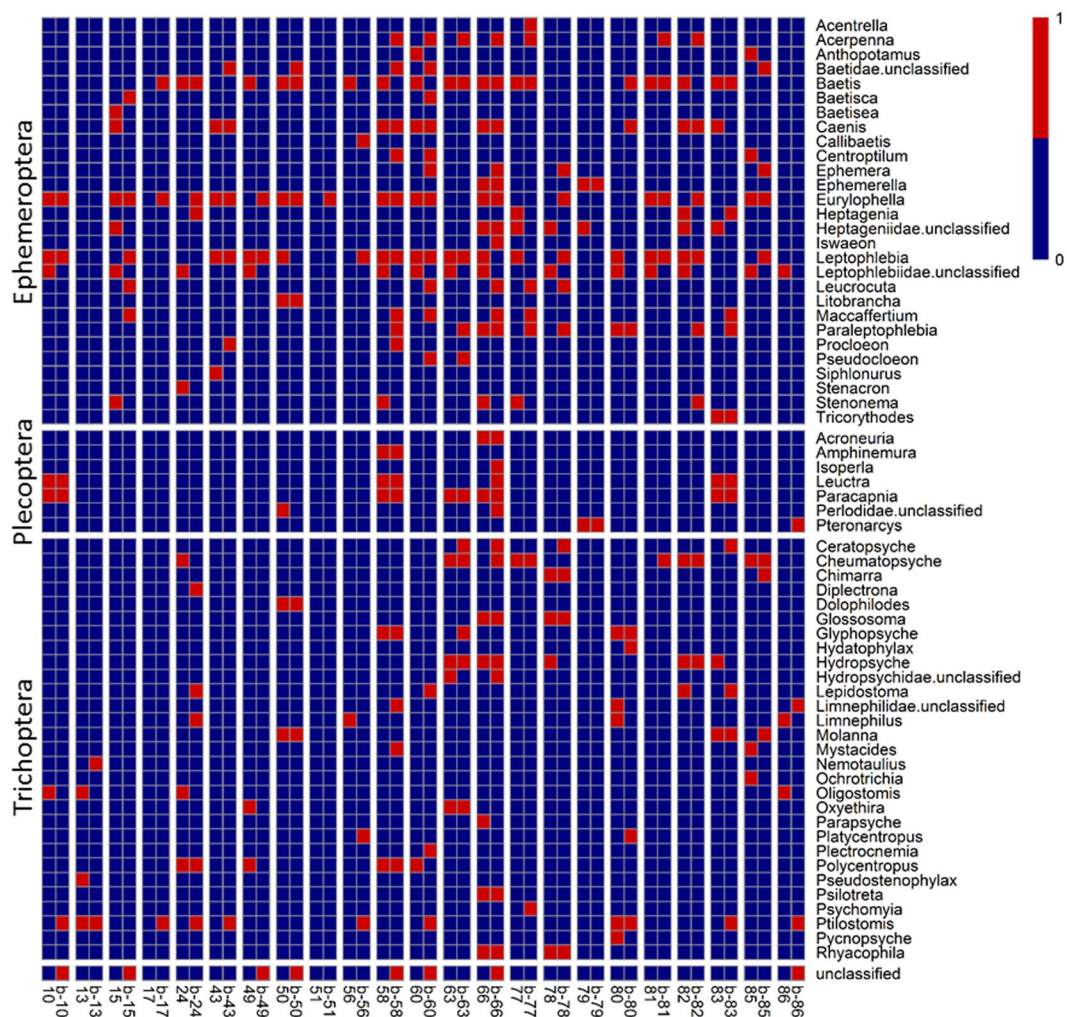



Figure 1.

 **Open Access** This article is licensed under a Creative Commons Attribution 4.0 International License, which permits use, sharing, adaptation, distribution and reproduction in any medium or format, as long as you give appropriate credit to the original author(s) and the source, provide a link to the Creative Commons license, and indicate if changes were made. The images or other third party material in this article are included in the article's Creative Commons license, unless indicated otherwise in a credit line to the material. If material is not included in the article's Creative Commons license and your intended use is not permitted by statutory regulation or exceeds the permitted use, you will need to obtain permission directly from the copyright holder. To view a copy of this license, visit <http://creativecommons.org/licenses/by/4.0/>.

© The Author(s) 2018