

SCIENTIFIC REPORTS

OPEN

Erratum: Human pressures and ecological status of European rivers

B. Grizzetti, A. Pistocchi, C. Liqueste, A. Udias, F. Bouraoui & W. van de Bund

Scientific Reports 7:205; doi:10.1038/s41598-017-00324-3; Article published online 16 March 2017

Published online: 26 July 2017

This Article contains an error in Figure 5, where ‘T1 (true negative)’ should read:

“Country reports LOWER ecological status & model predicts LOWER ecological status”.

The correct Figure 5 appears below as Figure 1.

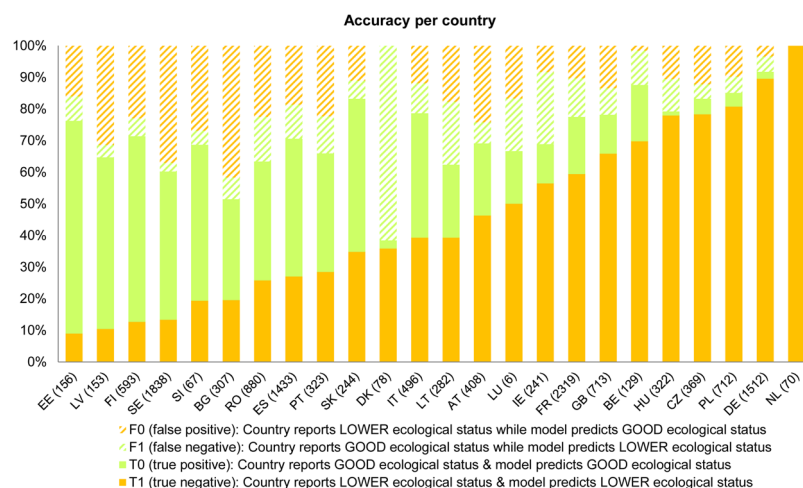


Figure 1. Distribution of model accuracy and errors per country. The values within brackets indicate the number of catchments with available data. Results are based on the random forest method. The analysis refers to the period 2004–2009, for which data on the ecological status were reported and most of the pressures indicators were available.



Open Access This article is licensed under a Creative Commons Attribution 4.0 International License, which permits use, sharing, adaptation, distribution and reproduction in any medium or format, as long as you give appropriate credit to the original author(s) and the source, provide a link to the Creative Commons license, and indicate if changes were made. The images or other third party material in this article are included in the article's Creative Commons license, unless indicated otherwise in a credit line to the material. If material is not included in the article's Creative Commons license and your intended use is not permitted by statutory regulation or exceeds the permitted use, you will need to obtain permission directly from the copyright holder. To view a copy of this license, visit <http://creativecommons.org/licenses/by/4.0/>.

© The Author(s) 2017

European Commission, Joint Research Centre (JRC), Directorate D—Sustainable Resources, via Enrico Fermi 2749, 21027, Ispra, Italy. Correspondence and requests for materials should be addressed to B.G. (email: bruna.grizzetti@ec.europa.eu)