

SCIENTIFIC REPORTS



OPEN

Differential expression of the protein kinase A subunits in normal adrenal glands and adrenocortical adenomas

Received: 10 October 2016

Accepted: 8 February 2017

Published online: 13 March 2017

Isabel Weigand¹, Cristina L. Ronchi², Marthe Rizk-Rabin³, Guido Di Dalmazi⁴, Vanessa Wild⁵, Kerstin Bathon⁶, Beatrice Rubin⁷, Davide Calebiro⁶, Felix Beuschlein⁴, Jérôme Bertherat³, Martin Fassnacht^{1,2,8} & Silviu Sbiera^{1,2}

Somatic mutations in protein kinase A catalytic α subunit (*PRKACA*) were found to be causative for 30–40% of cortisol-producing adenomas (CPA) of the adrenal gland, rendering PKA signalling constitutively active. In its resting state, PKA is a stable and inactive heterotetramer, consisting of two catalytic and two regulatory subunits with the latter inhibiting PKA activity. The human genome encodes three different PKA catalytic subunits and four different regulatory subunits that are preferentially expressed in different organs. In normal adrenal glands all regulatory subunits are expressed, while CPA exhibit reduced protein levels of the regulatory subunit II β . In this study, we linked for the first time the loss of RII β protein levels to the *PRKACA* mutation status and found the down-regulation of RII β to arise post-transcriptionally. We further found the PKA subunit expression pattern of different tumours is also present in the zones of the normal adrenal cortex and demonstrate that the different PKA subunits have a differential expression pattern in each zone of the normal adrenal gland, indicating potential specific roles of these subunits in the regulation of different hormones secretion.

ACTH-independent Cushing syndrome is mostly due to cortisol-producing adrenocortical adenomas or carcinomas. Whereas adrenocortical cancer is a very rare tumour^{1,2}, adenomas with autonomous cortisol secretion are frequent^{3–5}. With the advent of whole exome sequencing somatic mutations in the gene encoding the catalytic subunit α of protein kinase A (*PRKACA*) has been revealed in approximately 30–40% of CPA, associated with overt Cushing syndrome^{6–11}. Also other components of cAMP/PKA signalling were often shown to be either mutated, such as the stimulating G protein (G_{as}) which is encoded by the *GNAS* gene or deregulated in different endocrine disorders^{12,13} indicating the major role played by this pathway in hormonal secretion functions.

Under basal conditions, cAMP-dependent Protein Kinase (PKA) is a stable and inactive heterotetramer, consisting of two catalytic and two regulatory subunits. The human genome encodes three different catalytic subunits (α , β and γ) and four different regulatory subunits (I α , I β , II α , II β) that are each preferentially expressed in different organs¹⁴. In addition, the protein kinase X was also shown to associate with the PKA regulatory subunits¹⁵. PKA has two isoforms, referred to as I and II, depending on whether type I or type II regulatory subunits bind the catalytic subunits^{16,17}. Common to all regulatory subunits is the inhibitory role of the activity of the PKA catalytic subunits in the absence of cAMP¹⁸. PKA signalling is activated when two molecules of cAMP bind each regulatory subunit of the PKA heterotetramer, leading to its dissociation and releasing of the catalytic subunits, which thereby become active. Furthermore, the regulatory subunits can specifically interact with A-kinase anchoring

¹Department of Internal Medicine I, Division of Endocrinology and Diabetes, University Hospital, University of Wuerzburg, Wuerzburg, Germany. ²Comprehensive Cancer Center Mainfranken, University of Wuerzburg, Wuerzburg, Germany. ³Institut Cochin, INSERM U1016, CNRS UMR810, Department of Endocrinology, Reference Center for Rare Adrenal diseases, Assistance Publique Hôpitaux de Paris, Hôpital Cochin, Descartes University, Paris, France. ⁴Medizinische Klinik und Poliklinik IV, Ludwig-Maximilians University, Munich, Germany. ⁵Institute of Pathology, University of Wuerzburg, Wuerzburg, Germany. ⁶Institute of Pharmacology and Toxicology and Bioimaging Center, University of Wuerzburg, Wuerzburg, Germany. ⁷Endocrinology Unit, Department of Medicine, University of Padua, Padua, Italy. ⁸Central Laboratory, University Hospital, University of Wuerzburg, Wuerzburg, Germany. Correspondence and requests for materials should be addressed to S.S. (email: Sbiera_S@ukw.de)

proteins (AKAPs) that target PKA to specific subcellular compartments^{19,20}. This interaction may explain the different expression patterns and roles played by the different PKA isoforms.

Interestingly, the *PRKACA* mutations identified in CPA are situated at the interface between the catalytic subunit and the regulatory subunits⁶. By functional characterization of the initially identified L206R substitution and 199–200 insW insertion, it was shown that the binding of the regulatory subunits to the catalytic subunits is affected by these mutations, rendering PKA constitutively active²¹.

In normal adrenal glands (nAG), as in other endocrine tissues, both type I and II regulatory subunits are expressed²², but a detailed analysis had not been performed. Thus, it remains unclear if the expression of the regulatory subunits influences the specific steroidogenic profile of the three zones of the adrenal cortex. Of note, in some CPA, reduced protein levels of the regulatory subunit II β have been previously observed^{23,24}. Here we investigate if the *PRKACA* mutations leading to hyperactivity of PKA signalling in CPA are associated with the loss of RII β protein levels and demonstrate a clear connection between RII β protein levels and the mutation status of *PRKACA*. Furthermore, we describe a comprehensive pattern of PKA subunits expression in the different zones of the adrenal cortex and speculate about the functional consequences of these findings.

Material and Methods

Tissue collection. Formalin-fixed paraffin embedded (FFPE) tissues from patients that underwent surgery due to adrenocortical adenomas (n = 103) or carcinomas (n = 33) were consecutively collected at the University Hospitals of Wuerzburg (n = 115), Munich (n = 9) and Padua (n = 12). In addition, 15 FFPE tissues from normal adrenal glands from patients that underwent adrenalectomy due to kidney tumours were consecutively collected at the University Hospital Wuerzburg. Furthermore, fresh frozen tissues of 34 CPA were collected consecutively at the University Hospitals of Wuerzburg (n = 15) and Munich (n = 9), and the Hôpital Cochin Paris (n = 10)²³ for mRNA and protein analyses. All patients gave informed consent and the study was approved by the Ethics Committees of the University Hospitals of Wuerzburg, Munich and Padua and the Institute Cochin Paris. The *PRKACA* mutation status was determined using exome sequencing (CPA^{Co_{mut}} n = 8, CPA^{Co_{WT}} n = 13, endocrine inactive adenomas = EIA n = 13)^{6,11} or Sanger sequencing of the hotspot around the amino acid L206 (CPA^{mut} n = 15, CPA^{WT} n = 21) (some samples were also part of other studies^{6,10}). In addition, *GNAS* mutation status was determined using exome sequencing (CPA^{GNAS_{mut}} n = 7, CPA^{GNAS_{WT}} n = 26) or Sanger Sequencing of the hotspot region between amino acids R201 and Q227 (CPA^{GNAS_{WT}} n = 5). The methods were carried out in accordance with the approved guidelines. Detailed patient and *PRKACA* mutation data of all CPA are listed in Supplementary Tables S1a and b.

Patients and clinical annotations. Clinical parameters, such as sex, age at diagnosis, tumour size, and laboratory hormone analysis, and in case of adrenocortical carcinoma (ACC), tumour stage according to the European Network for the Study of Adrenal Tumours (ENSAT) classification²⁵, Weiss score, Ki67 index, presence and number of distant metastasis, and detailed follow-up information were collected through the German ACC and the ENSAT Registry (www.ensat.org/registry)²⁶. Malignancy and hormonal hypersecretion were defined according to established clinical, biochemical, and morphological criteria. The patient characteristics are listed in the Supplementary Tables S1a,b and S2.

Chromogenic immunohistochemistry staining. Full FFPE slides were deparaffinised and antigen retrieval was performed in 10 mM citric acid monohydrate buffer (pH 6.5) in a pressure cooker for 13 min. Unspecific binding sites were blocked with 20% human AB serum at room temperature (RT) for 1 h and primary antibodies were incubated in an appropriate dilution concentration at RT for 1 h (PRKACA: BD #610980, 1:1000; PRKAR2B: Sigma #HPA008421, 1:40; PRKAR1A: Novus #29250002, 1:250; PRKAR1B: Abnova #H00005575-M05, 1:100; PRKAR2A: BD #612243, 1:5000 and N-Universal Negative Controls anti-rabbit or anti-mouse: Dako). Signal amplification was achieved by En-Vision System Labelled Polymer-HRP Anti-Rabbit (Dako) for 40 min and developed for 10 min with DAB+ Liquid Kit (Dako). Nuclei were counterstained using Mayer's hematoxylin for 2 min. Specificities of antibodies were determined by WB. All antibodies gave one specific band at the predicted size.

Quantitative analysis of PKA subunits immunoreactivity. Chromogenic staining intensities were determined by two independent investigators (I.W. & S.S.) and graded as 0 (negative), 1 (low), 2 (medium) and 3 (high). The proportion of positive tumour cells was calculated for each specimen and scored 0 if 0% were positive, 0.1 if 1–9% were positive, 0.5 if 10–49% were positive and 1 if 50% or more were positive^{27,28}. A semi quantitative H-score was then calculated by multiplying the staining intensity grading score with the proportion score as described previously²⁹. Where discrepancies were observed, results were jointly assessed by both investigators and the final score was formed by consensus. The Spearman r for inter-observer agreement for each staining was high (>0.85).

Fluorescence immunohistochemistry staining. Full FFPE slides were deparaffinised and antigen retrieval was performed as described in the previous chapter. Unspecific binding sites were blocked with 20% human AB serum in TBS and to reduce auto fluorescence, cold water fish skin gelatine (Aurion) was added to a final concentration of 0.1% to the blocking buffer and incubated at RT for 30 min. Primary antibodies were incubated in an appropriate dilution concentration overnight at 4 °C (PRKAR2B: Sigma #HPA008421, 1:30; 58K Golgi protein: GeneTex #GTX26284, 1:50). Fluorescence labelled secondary antibodies against rabbit (goat-anti rabbit-Alexa596; LifeTechnologies #A11072, 1:200) and mouse (goat anti mouse-Alexa488; Dianova #115-545-062, 1:200) were used at RT for 3 h. Vectashield with DAPI (Vector Laboratories #H1200) was used as nuclear counterstain and mounting medium. Optical images were acquired using a Leica SP5 confocal microscope.

Gene expression analysis. RNA from fresh frozen tissues was isolated using the RNeasy Lipid Tissue Mini Kit (Qiagen) and reverse transcribed with the QuantiTect Reverse Transcription Kit (Qiagen). qRT-PCR was performed using pre-designed Taqman gene expression probes (Thermo Fischer Scientific) for *PRKACA* (Hs00427274_m1) and all PKA regulatory subunits (*PRRKARIA*: Hs00267597_m1, *PRKAR2A*: Hs00177760_m1; *PRKAR1B*: Hs00406762_m1; *PRKAR2B*: Hs00176966_m1). Endogenously expressed β -actin (Hs9999903_m1) was used for normalization. 5 ng cDNA were used for each PCR reaction and each sample was analysed in duplicate. Transcripts were amplified using the TaqMan Gene Expression Master Mix (Thermo Fischer), the CFX96 real-time thermocycler (Bio-rad) and Bio-Rad CFX Manager 2.0 software. Cycling conditions were 95 °C for three min followed by 50 cycles of 95 °C for 30 sec, 60 °C for 30 sec, and 72 °C for 30 sec. Using the Δ CT method³⁰, the gene expression levels were normalized to those of β -actin.

Western blot analysis. 20 mg of tumour tissue were shredded in lysis buffer containing 1% Triton-X and protease inhibitors. After sonication, cells were frozen at -80 °C, thawed and protein concentrations were determined using a bicinchoninic acid (BCA) kit (Sigma-Aldrich).

12 μ g protein from each sample was loaded on a 10% denaturing gel and proteins were separated by SDS-PAGE³¹. Proteins were transferred by tank blot onto a PVDF Membrane (GE Healthcare) and membranes were blocked in 5% skimmed milk in TBS-Tween at RT for 1 h. Primary antibodies (*PRKAR2B*: BD #610625, 1:1000 and *PRKACA*: BD #610980, 1:1000) were incubated over night at 4 °C. Membranes were washed 3 times in TBS-Tween and HRP-labelled secondary antibodies (goat-anti rabbit: Jackson ImmunoResearch Laboratories, #111-035-144 and goat-anti mouse: Jackson ImmunoResearch Laboratories, #115-035-003) were diluted 1:10000 and incubated at RT for 1 h. The protein-antibody complex was visualized by enhanced chemiluminescence using the Amersham ECL Prime reagent (GE Healthcare) and documented on X-ray film (Fuji). Normalization of protein levels was performed by re-probing the blot with an antibody recognizing human GAPDH (Sigma-Aldrich 1:10000). Autoradiographs were scanned, and the quantification of individual bands was performed using the FIJI software³².

Statistical analysis. The Mann-Whitney- U test was used to determine differences between two non-parametric datasets and Kruskal-Wallis test with Dunns post-test were used to determine statistically significant differences between more than two non-parametric datasets. Statistical analyses were performed using GraphPad Prism (version 6.0). P values < 0.05 were considered as statistically significant.

Results

RII β and RI α protein levels are significantly decreased in C α -mutated CPA. Chromogenic immunohistochemistry staining on FFPE tissue from CPA (with mutated (n = 18) and WT (n = 20) *PRKACA*), aldosterone producing adenoma = APA (n = 20), EIA (n = 25) and ACC (n = 33) was performed for all PKA regulatory subunits and the catalytic subunit α . While C α protein levels were not altered between *PRKACA*^{mut} CPA (Fig. 1A) and *PRKACA*^{wt} CPA (Fig. 1B), CPAs in general had lower C α protein levels compared to the other tumour types (Fig. 1C). RI α had significantly decreased immunoreactivity in *PRKACA*^{mut} CPA (Fig. 1D) compared to a strong immunoreactivity in *PRKACA*^{wt} CPA (Fig. 1E). Overall, RI α protein levels were very high in adrenocortical tumours (Fig. 1F).

We did not observe any significant differences in protein levels between *PRKACA*^{wt} and *PRKACA*^{mut} CPA for the regulatory subunits II α and I β (mean intensity 1.91 \pm 0.67 vs 1.42 \pm 0.91, p = 0.13 and 1.78 \pm 0.79 vs 1.53 \pm 0.79, p = 0.05, respectively) (Fig. 1G–L). However, RII β showed no or very weak immunoreactivity in *PRKACA*^{mut} CPA, while staining intensity was significantly higher in *PRKACA*^{wt} CPA (0.42 \pm 0.48 vs 1.55 \pm 0.72, p < 0.05) (Fig. 1M,N). A few *PRKACA* mutated samples showed a strong or normal expression of RII β , but they did not harbour the most common, L206R mutation, but other mutations in *PRKACA* (p.E32V: green, p.245_248del: red, see Fig. 1 legend). Between the different endocrine active adenomas, the strongest staining intensity of RII β was observed in APA (2.53 \pm 0.90 vs 0.42 \pm 0.48 vs 1.55 vs 0.72, p < 0.05) (Fig. 1O).

Strongly reduced RII β protein levels in C α -mutated CPA compared to WT CPA were further confirmed by Western blot analysis from three different patient cohorts including 2 cohorts from Germany and one from France (Fig. 2A) (RII β to GAPDH ratio in *PRKACA*^{mut} CPA vs *PRKACA*^{wt} CPA: 0.08 \pm 0.12 vs 0.86 \pm 0.53, p < 0.0001) (Fig. 2B). In general, all *PRKACA* mutated samples showed only weak expression of RII β . The only exception was the recently detected p.245_248del mutation, which was found in a patient with autonomous cortisol secretion but no overt Cushing syndrome (upper blot). Also C α protein levels were reduced in mutated compared to WT samples although not to the same extent (Fig. 2B). Since approximately 10% of CPA harbour activating somatic mutations in the *GNAS* gene, leading to increased PKA signalling^{7–9}, we investigated if *GNAS* mutations also affect the stability of PKA regulatory subunits. For this purpose, we analysed additionally the CPA^{GNAS mut} separately from CPA^{PRKACA mut} and CPA^{PRKACA WT GNAS WT} both regarding immunohistochemistry and immunoblotting results. However, mutations in the *GNAS* gene did not point to any degradation of the PKA regulatory subunits in CPA (Supplementary Fig. 1).

mRNA expression of PKA subunits is not significantly altered between C α -mutated CPA and WT CPA. To explore if the C α mutations have an effect on the transcriptional regulation of any PKA subunit, we performed qRT-PCR. mRNA expression levels were not altered between the *PRKACA*^{mut} and *PRKACA*^{wt} CPA for all the PKA subunits we tested (Fig. 3), but C α expression was increased, while RI α and RII β expressions were decreased in all CPA compared to nAG (0.16 \pm 0.07 vs 0.07 \pm 0.04, p = 0.0033; 4.81 \pm 4.44 vs 11.12 \pm 2.15, p = 0.0003 and 0.42 \pm 0.35 vs 1.07 \pm 0.22, p = 0.001, Fig. 3A,B,E, respectively).

RII β localizes to the Golgi apparatus in *PRKACA*^{WT} tumour cells and is not detectable in *PRKACA*^{L206R mut} cells. In order to investigate, a possible connection between reduced RII β protein levels

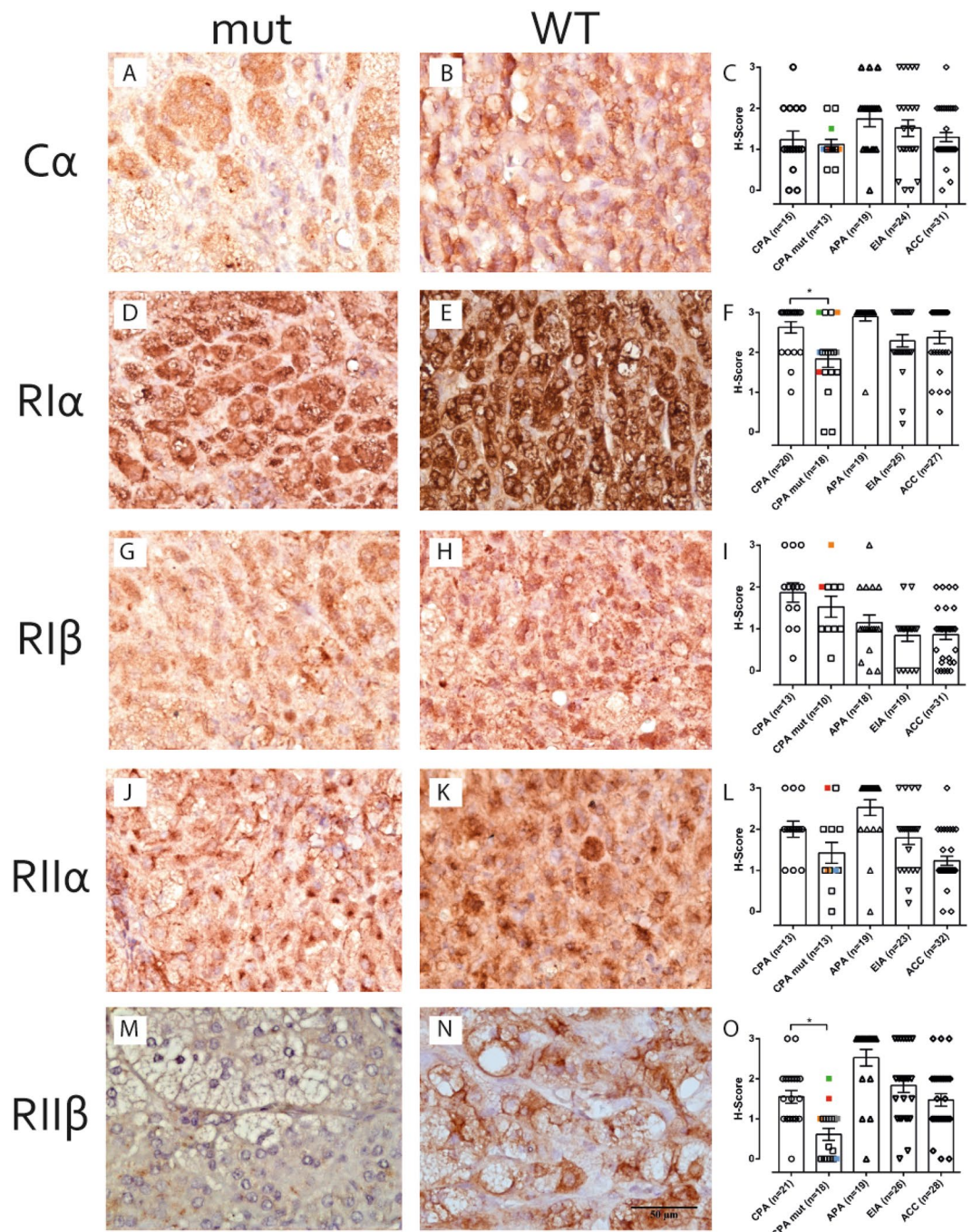


Figure 1. Immunohistochemical staining of the PKA subunits on CPA. Representative immunohistochemical staining for the PKA C α subunit in CPA^{PRKACA^{mut}} (A) and CPA^{PRKACA^{WT}} (B). An analysis of all stained tissues for C α is shown in (C). Representative immunohistochemical staining for the PKA RI α subunit in CPA^{mut} (D) and CPA^{WT} (E). An analysis of all stained tissues for RI α is shown in (F). Representative immunohistochemical staining for the PKA RI β subunit in CPA^{mut} (G) and CPA^{WT} (H). An analysis of all stained tissues for RI β is shown in (I). Representative immunohistochemical staining for the PKA RII α subunit in CPA^{mut} (J) and CPA^{WT} (K). An analysis of all stained tissues for RII α is shown in (L). Representative immunohistochemical staining for the PKA RII β subunit in CPA^{mut} (M) and CPA^{WT} (N). An analysis of all stained tissues for RII β is shown in (O). Mutations, other than the L206R mutation are indicated in different colours. p.200_201insV: blue, p.199_200insW: grey, p.E32V: green, p.W197R: orange, p.245_248.del: red. Kruskal-Wallis test with Dunn's correction for multiple comparisons was performed to determine statistically significant differences between all data sets. * $p < 0.05$.

in *PRKACA* mutated tumours and its subcellular localization in these tumours, we performed simultaneous fluorescence immunohistochemistry of RII β and the Golgi apparatus in a subset of 10 CPA (6 WT and 4 mutated).

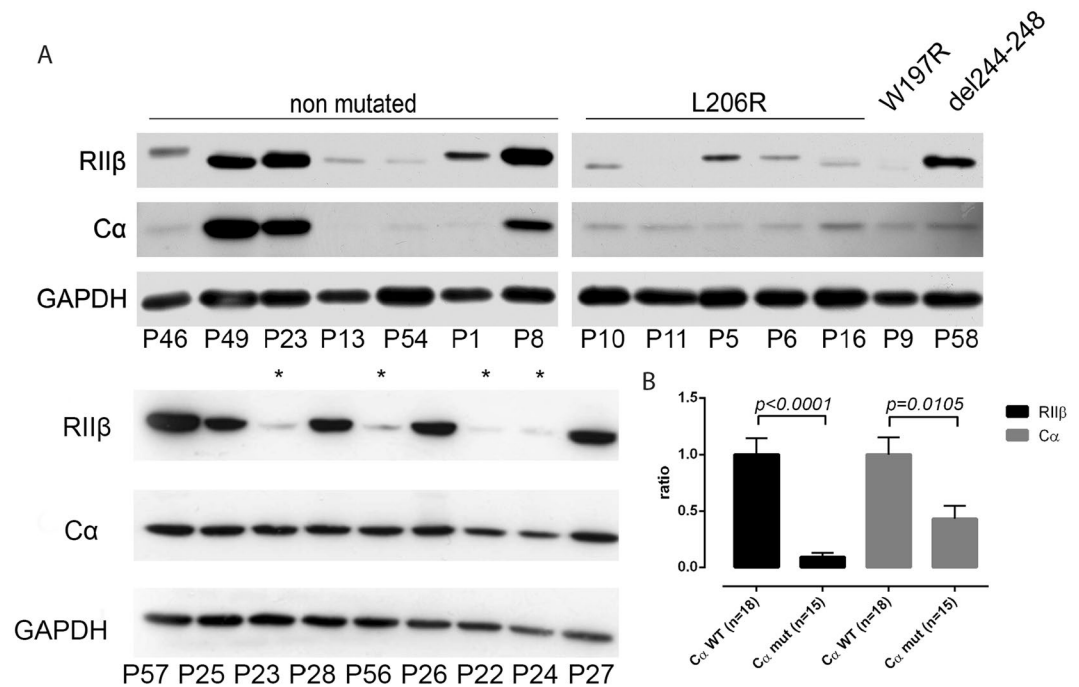


Figure 2. Western blots of cortisol producing adrenocortical adenomas. Western blotting of RII β , C α and GAPDH. The patient ID according to Supplementary Tables S1a and b are given under each band. *PRKACA* mutation status is indicated as such and “*” indicates samples harbouring the L206R mutation in *PRKACA*, as well (A). Densitometric analysis of western blots was done using the Fiji software³². The quotient of RII β /GAPDH and C α /GAPDH was normalized to the mean of WT RII β /GAPDH or C α /GAPDH and this ratio is shown on the y-axis (B).

Co-staining of RII β and several different organelle markers in adrenocortical tumour cells NCI-H295R, revealed a co-localization of RII β with the Golgi apparatus but not with the endoplasmic reticulum, mitochondria or lysosomes (Supplementary Material & Methods; Supplementary Fig. 2). And indeed, in our stained *PRKACA*^{WT} CPA tissues, RII β had a very localized distribution, accumulating in small spots close to the nucleus (Fig. 4A). Golgi apparatus staining showed a very similar pattern and the overlay revealed a close proximity of RII β and Golgi apparatus (Fig. 4A,B). In *PRKACA*^{L206Rmut} CPA, RII β staining was not detectable and there was no indication that it changed location in these cells (Fig. 4C).

The PKA subunits are differentially expressed in normal adrenal glands. The above mentioned observations that the different PKA subunits have different expression patterns between the tumours with different hormonal pattern suggest some relation between PKA subunit expression and steroid secretion. Therefore, we analysed expression levels of these subunits in the different zones of the adrenal cortex and the medulla. C α protein levels were highest in the *zona glomerulosa*, but it was also moderately strong expressed in the other two zones of the cortex and was almost absent in the medulla (Fig. 5). In general, expression of all subunits was rather low in the medulla with exception of RII α , which in contrast to all other subunits was almost ubiquitously strong throughout the adrenal gland (RI α : 0.71 ± 0.49 ; RII α : 3.0 ± 0.0 ; RI β : 0.0 ± 0.0 ; RII β : 0.67 ± 0.58 ; C α : 0.50 ± 0.71) (Fig. 5E). The *zona glomerulosa* seems to be characterized by low expression of RI β , whereas all other subunits are rather highly expressed (RI α : 3.0 ± 0.0 ; RII α : 2.67 ± 0.62 ; RI β : 0.71 ± 0.61 ; RII β : 2.82 ± 0.40 ; C α : 2.71 ± 0.47) (Fig. 5). The pattern in the cortisol-producing *zona fasciculata* is strikingly similar with one exception, the low expression of RII β (RI α : 2.89 ± 0.33 ; RII α : 2.13 ± 0.83 ; RI β : 0.71 ± 0.61 ; RII β : 1.18 ± 0.60 ; C α : 1.79 ± 0.89) (Fig. 5B). Thus, the two β subunits seem to be negatively correlated with secretion of aldosterone and cortisol, a pattern which can also be partly found in the aldosterone- and cortisol-producing adenomas. Interestingly, the *zona reticularis*, which produces quantitatively the highest amount of steroid hormones in the circulating blood, mainly precursors and androgen, is characterized by high expression of all four regulatory subunits (RI α : 2.67 ± 0.5 ; RII α : 2.53 ± 0.64 ; RI β : 2.64 ± 0.5 ; RII β : 2.18 ± 0.87 ; C α : 1.71 ± 0.83) (Fig. 5).

Discussion

Decreased protein levels of PKA RII β and RI α subunits in cortisol producing adenomas. In 2008 two studies had shown that protein expression of the RII β subunit of PKA is markedly reduced in CPA compared to other adrenocortical tumours, while no such differences were observed regarding the expression of the other regulatory subunits^{23,24}. There were some discrepancies between the two studies, with Mantovani *et al.* demonstrating that a loss of RII β results in a compensatory increase of RI α protein levels in Y1 cells, while Vincent-Dejean *et al.* failed to observe this phenomenon in tumour samples. Furthermore, the latter found decreased RII β protein levels only in a subpopulation of CPA with increased PKA activity. This discrepancy came

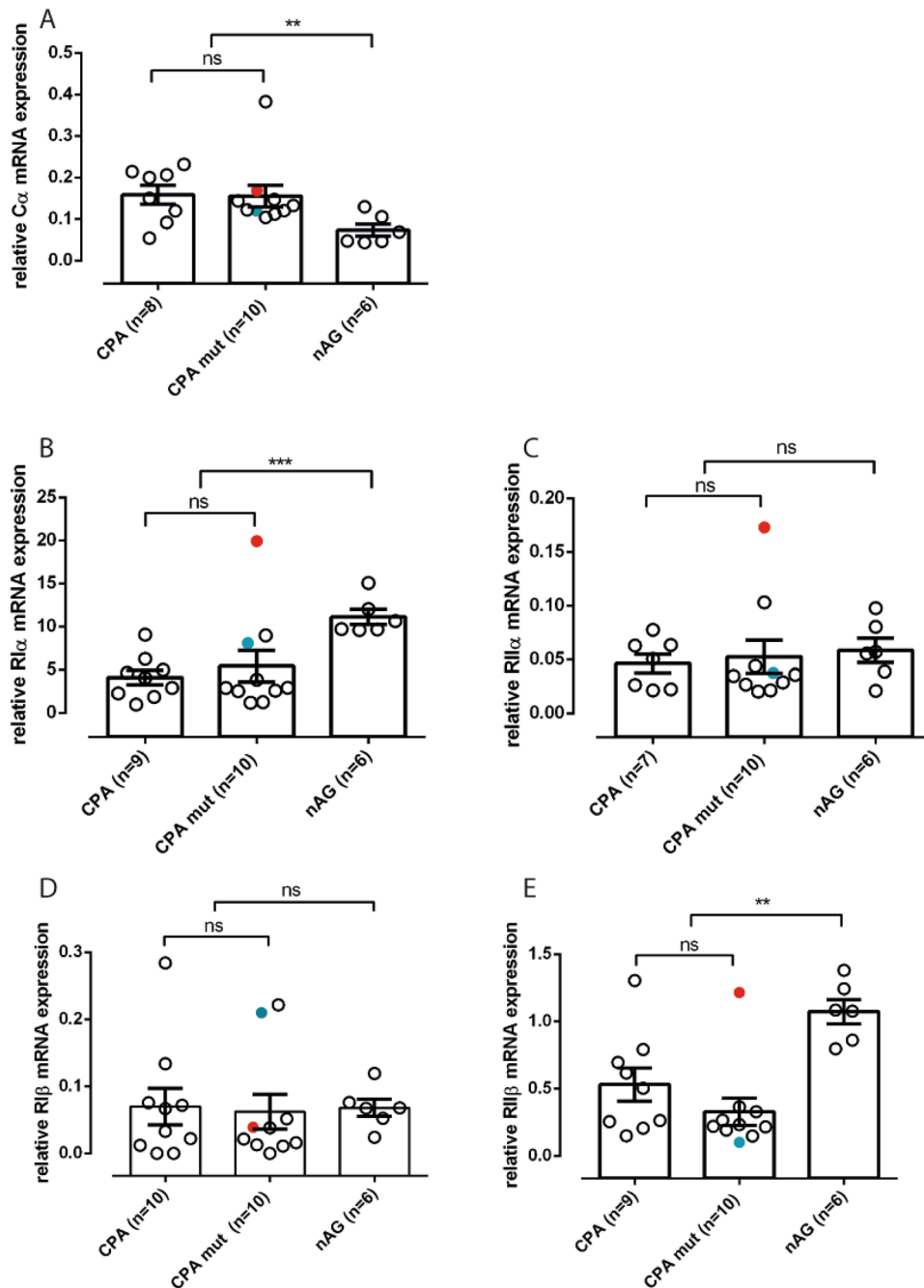


Figure 3. PKA subunits mRNA expression on CPA. Relative PKA subunits mRNA expression (normalized to β -actin using the Δ CT method³⁰) for PRKACA (A), PRKAR1A (B), PRKAR2A (C), PRKAR1B (D) and PRKAR2B (E). The non-parametric Mann-Whitney-U Test was performed to identify statistical differences between CPA (combined CPA PRKACA mutated and non mutated) and normal adrenal glands (nAG). Red dot: p.245_248del mutation in PRKACA, blue dot: p.W197R PRKACA mutation.

as a surprise, as the compensatory up-regulation of one regulatory PKA subunit in response to down-regulation of the other has been shown in several systems^{33,34}. One study demonstrated that also mutations in the regulatory subunit $RI\alpha$, leading to its decreased expression, induced the compensatory mechanism leading to an increase of other regulatory subunits³⁴. The down-regulation of $RII\beta$ in CPA could not be explained for some time. Recently, we could prove that mutations in the $C\alpha$ subunit decrease the binding potential of regulatory subunits²¹ and already many years ago it was demonstrated, that unbound regulatory subunits are normally degraded in the proteasome in a ubiquitin-dependent manner³⁵. Following the discovery of mutations in the gene encoding for the catalytic subunit α of PKA as the underlying cause of CPA tumorigenesis⁶ we hypothesized that these mutations might be causative for the decreased $RII\beta$ protein expression in these tumours. Therefore, we assessed the protein levels of PKA subunits by both immunohistochemistry and immunoblotting in a large series of adrenocortical

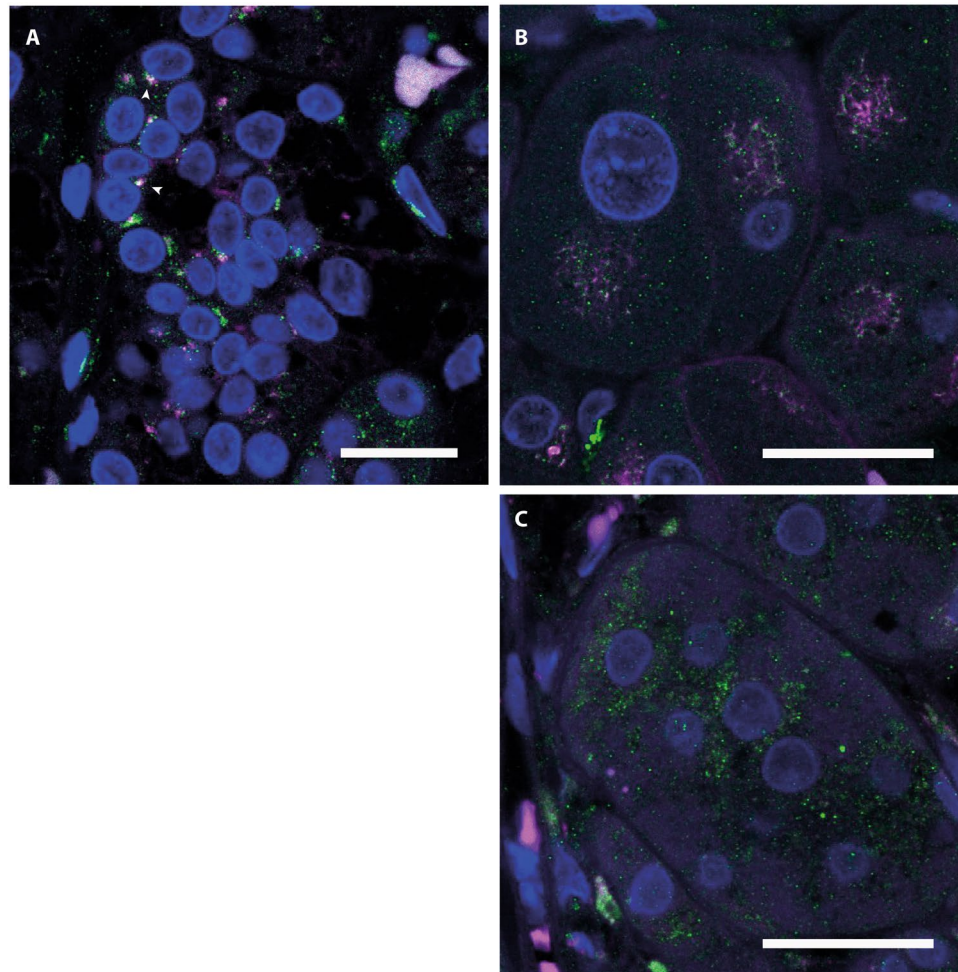


Figure 4. Co-immunofluorescence of RII β and the Golgi apparatus. Representative co-immunofluorescence of RII β (magenta) and the Golgi marker 58K protein (green) in a PRKACA^{WT} tumour (A,B) and in a PRKACA^{L206R mut} tumour (C). The overview shows accumulation of RII β in localized areas close to the nucleus and the overlay with the Golgi apparatus marker reveals co-localization (white, arrowheads). A higher magnification of the same tumour shows the close proximity of RII β and the Golgi apparatus (B), while the RII β staining is absent in the L206R mutated tumour (C). Scale bar 20 μ m (A) and 10 μ m (B,C).

tumours with known *PRKACA* mutation status, including 10 samples that had already been included in the study by Vincent-Dejean *et al.*²³.

Since reduced RII β protein levels were found in CPA in general²⁴ but were particularly pronounced in a sub-population of CPA with high PKA activity²³, we hypothesized, that this subpopulation is the *PRKACA* mutated CPA group. This hypothesis was confirmed by our immunohistochemistry results where CPA with mutations in the *PRKACA* gene showed reduced RII β protein levels compared to *PRKACA*^{WT} CPA. We also observed significantly reduced RI α protein levels in *PRKACA*^{mut} compared to *PRKACA*^{WT} CPA but no significant differences concerning the other two regulatory subunits or the catalytic subunit itself. One possible explanation for this down-regulation could be the general differences in abundance of these two regulatory subunits in the adrenal cortex, so the degradation of unbound regulatory subunits failing to bind the mutated catalytic subunits may be stronger in the case of the subunits with higher adrenal expression.

Surprisingly, the only *PRKACA*^{WT} CPA that lacked immunoreactivity for RII β in immunohistochemistry was from a patient with autonomous cortisol secretion and did not reveal any somatic mutations affecting the cAMP/PKA signalling pathway. Interestingly, in this sample, by whole exome sequencing, we could identify a germline genomic variant in the *GNAS* gene (encoding the alpha subunit of the stimulatory G protein (Gs) and involved in cAMP regulation) (p.R600G, SNP: rs74897360)¹¹, however, the clinical significance of this SNP has never been investigated before.

Mantovani *et al.* found decreased RII β protein levels in CPA compared to ACC²⁴. In our series only the *PRKACA*^{mut} CPA had significantly decreased RII β levels compared to ACC but not WT CPA. Neither did we observe any significant differences between the other PKA subunits between any of the adrenocortical adenomas subgroups, nor when we compared them with adrenocortical carcinomas. This previous study also showed that in the low RII β group there was also a significant reduction in RII α protein and a tendency for reduced C α and

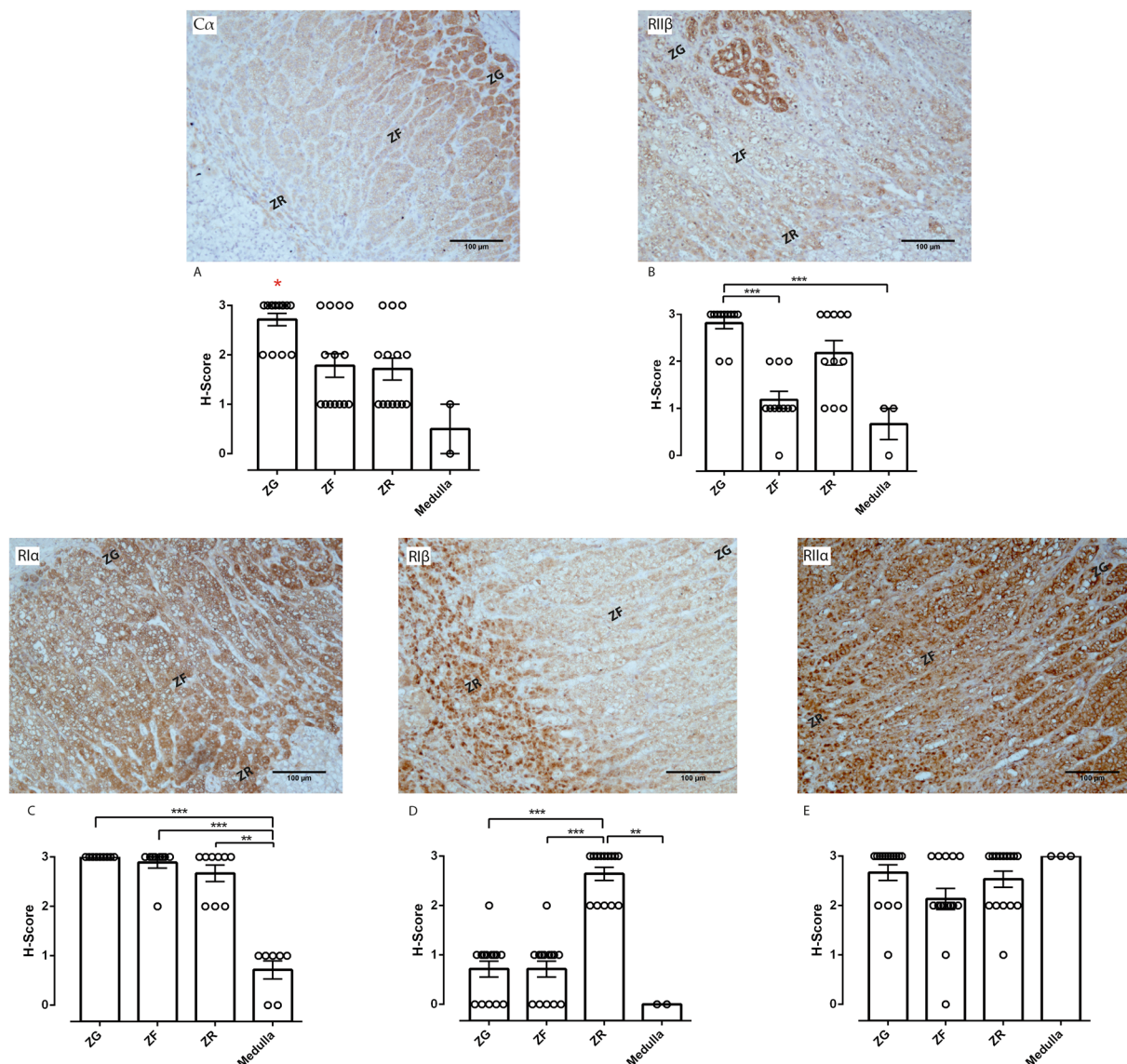


Figure 5. Immunohistochemical staining of the PKA subunits in normal adrenal glands. Representative immunohistochemical staining of the PKA subunits in the different zones of the adult normal adrenal gland and analysis of staining intensities of the different zones of the adrenal cortex and the medulla. C α is strongly expressed in the *Zona glomerulosa* (A), RII β is strongly expressed in the *Zona glomerulosa* and *Zona reticularis* (B), RI α is strongly expressed in all zones of the adrenal cortex (C), RI β has a strong expression in the *Zona reticularis* (D) and RII α is expressed in the whole adrenal gland including the medulla (E). ZG: *Zona glomerulosa*, ZF: *Zona fasciculata*, ZR: *Zona reticularis*. Kruskal-Wallis test with Dunn's correction for multiple comparisons was performed to determine statistically significant differences between all data sets. * $p < 0.05$, ** $p < 0.01$, *** $p < 0.001$.

RI α subunits protein expression. Although we did not investigate RII α with immunoblotting, we did not observe reduced RII α protein levels in *PRKACA*^{mut} CPA by immunohistochemistry. However, what we could show was that the C α and RI α protein levels were both significantly reduced in *PRKACA*^{mut} compared to *PRKACA*^{wt} CPA. The discrepancy between these results and the fact that immunohistochemistry did not reveal a similar reduction for the C α could arise from partly different samples and also from the two methods used. But also other groups found a reduced expression of the mutant C α protein⁸ in the tumours.

In contrast to the samples carrying the frequent L206R *PRKACA* mutations, decrease of RII β protein levels was observed in only some of the other mutated tumours. Highest RII β expression was observed in the sample carrying the p.E32V mutation¹¹, which lies outside the interface of regulatory and catalytic subunits and does maybe not influence the formation of a stable PKA holoenzyme. Unchanged RII β protein expression in western blot analysis was also found in the sample carrying the p.245_248.del mutation¹¹, however, this tumour is from a patient without signs of clinical Cushing Syndrome, suggesting that the effects of this mutation are less severe.

As at mRNA level, we did not observe any downregulation of RI α and RII β in *PRKACA*^{mut} samples compared to *PRKACA*^{wt} CPA, therefore a post-translational regulation and/or degradation is a more likely explanation for the decrease in protein levels. In 2011, it was shown that the E3 ligase Praja2 interacts with the regulatory subunits I α , II α and II β , tagging them for proteasomal degradation in order to prolong the activated PKA signalling³⁶. However, our results indicate a more restricted mechanism of degradation, especially for RII β in *PRKACA*^{mut} samples, since RII β protein levels were completely absent in most samples. This degradation could be mediated by a RII β -specific A-kinase anchoring protein (AKAP), that modifies either its subcellular localization or tags it for proteasomal/lysosomal degradation. Indicative for such a degradation tagging would be the change of RII β protein localization between *PRKACA*^{wt} and *PRKACA*^{mut} samples towards a more proteasomal/lysosomal localization. As we hypothesized that the *PRKACA* mutations possibly changes RII β subcellular localization we checked if RII β is also co-localized with the golgi apparatus in tissues derived from *PRKACA*^{wt} and *PRKACA*^{L206Rmut} CPA or if this localization changes in the mutated samples. A co-localization of RII β with the Golgi apparatus has already been described in different cell types^{37,38}. This hypothesis proved not to be true so we don't have yet a conclusive answer for the reasons leading to low levels of RII β in *PRKACA*^{L206Rmut} CPA. Now, additional functional studies would be necessary to answer this question but they are beyond the scope of this publication.

Interestingly, other groups investigating the expression of the PKA subunits in other endocrine tissues such as thyroid and thyroid derived tumours³⁹ found exactly the opposite, no to low levels of RII β and RI α in normal thyroid tissue but both subunits had increased levels in both benign and malignant thyroid tumours³⁹ showing that PKA function in endocrine organs is very variable.

Possible correlation between expression of different PKA subunits and hormone secretion pattern in normal adrenal glands.

A differential expression of several PKA isoforms in different tissues or subcellular compartments has already been described^{14,38}. Here we have demonstrated further, that some PKA subunits are not only organ specific, but that their expression is different between the different functional zones of the adrenal cortex, indicating possible specific roles in the secretion of hormones. The catalytic subunit α is most abundantly expressed in the *zona glomerulosa*, the zone of the adrenal cortex that secretes mainly mineralocorticoids. However, the strong expression of C α seems to be compensated by a strong expression of all regulatory subunits, with the exception of RI β , in this zone, suggesting a high level of regulation through formation of an inactive PKA heterotetramer. RI β showed the most limited expression pattern in the adrenal gland being restricted to the *zona reticularis*, responsible for sex hormones secretion. Therefore, it could be involved in the regulation of these hormones. RII α was the only subunit that showed expression in all zones of the adrenal cortex and additionally in the adrenal medulla, a part of the adrenal gland of neuroendocrine origin that secretes catecholamines. RII β , although considered to be one of the main regulatory subunits in the adrenal glands, showed only a weak to medium immunoreactivity in the *zona fasciculata*, which produces mainly cortisol but was abundant in the *zona glomerulosa* and *zona reticularis*. Together with the fact that low RII β expression is associated with an increase in cortisol production in a subset of adrenocortical adenomas, this suggests that at least in the adrenal cortex this subunit is responsible for the negative regulation of cortisol production.

In conclusion, our study shows a direct link between *PRKACA* mutations and reduced protein levels of two regulatory subunits of PKA in a sub-group of CPA and that specific expression overlapping the different functional zones of the adrenal cortex, could indicate distinct roles of the different PKA regulatory subunits in the secretion of different hormones.

References

- Fassnacht, M., Kroiss, M. & Allolio, B. Update in adrenocortical carcinoma. *J Clin Endocrinol Metab* **98**, 4551–4564, doi:10.1210/jc.2013-3020 (2013).
- Else, T. *et al.* Adrenocortical carcinoma. *Endocr Rev* **35**, 282–326, doi:10.1210/er.2013-1029 (2014).
- Grumbach, M. M. *et al.* Management of the clinically inapparent adrenal mass (“incidentaloma”). *Ann Intern Med* **138**, 424–429 (2003).
- Mansmann, G. *et al.* The clinically inapparent adrenal mass: update in diagnosis and management. *Endocr Rev* **25**, 309–340, doi:10.1210/er.2002-0031 (2004).
- Fassnacht, M. *et al.* Management of adrenal incidentalomas: European Society of Endocrinology Clinical Practice Guideline in collaboration with the European Network for the Study of Adrenal Tumors. *Eur J Endocrinol* **175**, G1–G34, doi:10.1530/EJE-16-0467 (2016).
- Beuschlein, F. *et al.* Constitutive activation of PKA catalytic subunit in adrenal Cushing's syndrome. *N Engl J Med* **370**, 1019–1028, doi:10.1056/NEJMoa1310359 (2014).
- Goh, G. *et al.* Recurrent activating mutation in *PRKACA* in cortisol-producing adrenal tumors. *Nat Genet* **46**, 613–617, doi:10.1038/ng.2956 (2014).
- Sato, Y. *et al.* Recurrent somatic mutations underlie corticotropin-independent Cushing's syndrome. *Science* **344**, 917–920, doi:10.1126/science.1252328 (2014).
- Cao, Y. *et al.* Activating hotspot L205R mutation in *PRKACA* and adrenal Cushing's syndrome. *Science* **344**, 913–917, doi:10.1126/science.1249480 (2014).
- Di Dalmazi, G. *et al.* Novel somatic mutations in the catalytic subunit of the protein kinase A as a cause of adrenal Cushing's syndrome: a European multicentric study. *J Clin Endocrinol Metab* **99**, E2093–2100, doi:10.1210/jc.2014-2152 (2014).
- Ronchi, C. L. *et al.* Genetic landscape of sporadic unilateral adrenocortical adenomas without *PRKACA* p.Leu206Arg mutation. *J Clin Endocrinol Metab*, jc20161586, doi: 10.1210/jc.2016-1586 (2016).
- Lacroix, A. *et al.* Aberrant G-protein coupled receptor expression in relation to adrenocortical overfunction. *Clin Endocrinol (Oxf)* **73**, 1–15, doi:10.1111/j.1365-2265.2009.03689.x (2010).
- Stratakis, C. A. cAMP/PKA signaling defects in tumors: genetics and tissue-specific pluripotential cell-derived lesions in human and mouse. *Mol Cell Endocrinol* **371**, 208–220, doi:10.1016/j.mce.2013.01.015 (2013).
- Corbin, J. D., Keely, S. L. & Park, C. R. The distribution and dissociation of cyclic adenosine 3':5'-monophosphate-dependent protein kinases in adipose, cardiac, and other tissues. *J Biol Chem* **250**, 218–225 (1975).
- Diskar, M. *et al.* Regulation of cAMP-dependent protein kinases: the human protein kinase X (PrKX) reveals the role of the catalytic subunit alphaH-alphaI loop. *J Biol Chem* **285**, 35910–35918, doi:10.1074/jbc.M110.155150 (2010).

16. Hofmann, F., Beavo, J., Bechtel, P. & Krebs, E. Comparison of adenosine 3':5'-monophosphate-dependent protein kinases from rabbit skeletal and bovine heart muscle. *Journal of Biological Chemistry* **250**, 7795–7801 (1975).
17. Scott, J. D. *et al.* The molecular cloning of a type II regulatory subunit of the cAMP-dependent protein kinase from rat skeletal muscle and mouse brain. *Proceedings of the National Academy of Sciences* **84**, 5192–5196 (1987).
18. Beavo, J. A., Bechtel, P. J. & Krebs, E. G. Activation of protein kinase by physiological concentrations of cyclic AMP. *Proc Natl Acad Sci USA* **71**, 3580–3583 (1974).
19. Rubin, C., Rangel-Aldao, R., Sarkar, D., Erlichman, J. & Fleischer, N. Characterization and comparison of membrane-associated and cytosolic cAMP-dependent protein kinases. Physicochemical and immunological studies on bovine cerebral cortex protein kinases. *Journal of Biological Chemistry* **254**, 3797–3805 (1979).
20. Lohmann, S. M., DeCamilli, P., Einig, I. & Walter, U. High-affinity binding of the regulatory subunit (RII) of cAMP-dependent protein kinase to microtubule-associated and other cellular proteins. *Proc. Natl. Acad. Sci* **81**, 6723–6727 (1984).
21. Calebiro, D. *et al.* PKA catalytic subunit mutations in adrenocortical Cushing's adenoma impair association with the regulatory subunit. *Nat Commun* **5**, 5680, doi:10.1038/ncomms6680 (2014).
22. Feliciello, A., Gottesman, M. E. & Avvedimento, E. V. The biological functions of A-kinase anchor proteins. *Journal of molecular biology* **308**, 99–114 (2001).
23. Vincent-Dejean, C. *et al.* Identification of a clinically homogenous subgroup of benign cortisol-secreting adrenocortical tumors characterized by alterations of the protein kinase A (PKA) subunits and high PKA activity. *Eur J Endocrinol* **158**, 829–839, doi:10.1530/EJE-07-0819 (2008).
24. Mantovani, G. *et al.* Different expression of protein kinase A (PKA) regulatory subunits in cortisol-secreting adrenocortical tumors: relationship with cell proliferation. *Exp Cell Res* **314**, 123–130, doi:10.1016/j.yexcr.2007.08.024 (2008).
25. Fassnacht, M. *et al.* Limited prognostic value of the 2004 International Union Against Cancer staging classification for adrenocortical carcinoma: proposal for a Revised TNM Classification. *Cancer* **115**, 243–250, doi:10.1002/cncr.24030 (2009).
26. Fassnacht, M. *et al.* Improved survival in patients with stage II adrenocortical carcinoma followed up prospectively by specialized centers. *J Clin Endocrinol Metab* **95**, 4925–4932, doi:10.1210/jc.2010-0803 (2010).
27. Handra-Luca, A., Bilal, H., Bertrand, J. C. & Fouret, P. Extra-cellular signal-regulated ERK-1/ERK-2 pathway activation in human salivary gland mucoepidermoid carcinoma: association to aggressive tumor behavior and tumor cell proliferation. *Am J Pathol* **163**, 957–967, doi:10.1016/S0002-9440(10)63455-4 (2003).
28. Al-Haddad, S. *et al.* Psoriasis (S100A7) expression and invasive breast cancer. *Am J Pathol* **155**, 2057–2066, doi:10.1016/S0002-9440(10)65524-1 (1999).
29. Olausson, K. A. *et al.* DNA repair by ERCC1 in non-small-cell lung cancer and cisplatin-based adjuvant chemotherapy. *N Engl J Med* **355**, 983–991, doi:10.1056/NEJMoa060570 (2006).
30. Pfaffl, M. W. A new mathematical model for relative quantification in real-time RT-PCR. *Nucleic Acids Research* **29**, e45, doi:10.1093/nar/29.9.e45 (2001).
31. Laemmli, U. K. Cleavage of structural proteins during the assembly of the head of bacteriophage T4. *Nature* **227**, 680–685 (1970).
32. Schindelin, J. *et al.* Fiji: an open-source platform for biological-image analysis. *Nature methods* **9**, 676–682 (2012).
33. Amieux, P. S. *et al.* Compensatory regulation of RI α protein levels in protein kinase A mutant mice. *Journal of Biological Chemistry* **272**, 3993–3998 (1997).
34. Robinson-White, A. *et al.* PRKAR1A Mutations and protein kinase A interactions with other signaling pathways in the adrenal cortex. *J Clin Endocrinol Metab* **91**, 2380–2388, doi:10.1210/jc.2006-0188 (2006).
35. Hegde, A. N., Goldberg, A. L. & Schwartz, J. H. Regulatory subunits of cAMP-dependent protein kinases are degraded after conjugation to ubiquitin: a molecular mechanism underlying long-term synaptic plasticity. *Proc Natl Acad Sci USA* **90**, 7436–7440 (1993).
36. Lignitto, L. *et al.* Control of PKA stability and signalling by the RING ligase praja2. *Nature cell biology* **13**, 412–422 (2011).
37. Rios, R. M., Celati, C., Lohmann, S. M., Bornens, M. & Keryer, G. Identification of a high affinity binding protein for the regulatory subunit RII beta of cAMP-dependent protein kinase in Golgi enriched membranes of human lymphoblasts. *EMBO J* **11**, 1723–1731 (1992).
38. Keryer, G. *et al.* Differential localization of protein kinase A type II isozymes in the Golgi-centrosomal area. *Experimental cell research* **249**, 131–146 (1999).
39. Ferrero, S. *et al.* Different expression of protein kinase A (PKA) regulatory subunits in normal and neoplastic thyroid tissues. *Histol Histopathol* **30**, 473–478 (2015).

Acknowledgements

The authors thank Sabine Herterich for performing the Sanger sequencing to determine the *GNAS* mutation status. This work has been supported by grants from the ERA-NET “E-Rare” (grant 01GM1407B to M.F. and D.C.) and the IZKF Wuerzburg (grant B-281 to M.F. and D.C.). This publication was funded by the German Research Foundation (DFG) and the University of Wuerzburg in the funding programme Open Access Publishing.

Author Contributions

I.W., D.C. and S.S. conceived and performed experiments. M.R.R. and K.B. performed experiments. V.W., B.R., F.B. and J.B. collected patient material. C.L.R. and G.D.D. collected patient material and clinical data. S.S., D.C. and M.F. supervised the project. I.W., M.F. and S.S. wrote the manuscript. All authors reviewed the manuscript.

Additional Information

Supplementary information accompanies this paper at doi:10.1038/s41598-017-00125-8

Competing Interests: The authors declare that they have no competing interests.

Publisher's note: Springer Nature remains neutral with regard to jurisdictional claims in published maps and institutional affiliations.



This work is licensed under a Creative Commons Attribution 4.0 International License. The images or other third party material in this article are included in the article's Creative Commons license, unless indicated otherwise in the credit line; if the material is not included under the Creative Commons license, users will need to obtain permission from the license holder to reproduce the material. To view a copy of this license, visit <http://creativecommons.org/licenses/by/4.0/>

© The Author(s) 2017