



Publisher Correction: The expanding landscape of inflammatory cells affecting cancer therapy

Ralph Weissleder and Mikael J. Pittet

Correction to: *Nature Biomedical Engineering* <https://doi.org/10.1038/s41551-020-0524-y>, published 18 March 2020.

In the version of the Perspective originally published, in Fig. 1c the data for DC₂ were mistakenly duplicated from the data for DC₁, and the data for DC₃, pDC, Mono₁₋₄ and Mø_{1-cycl} were incorrectly plotted. These errors have now been corrected, and the original and corrected panels are shown below.

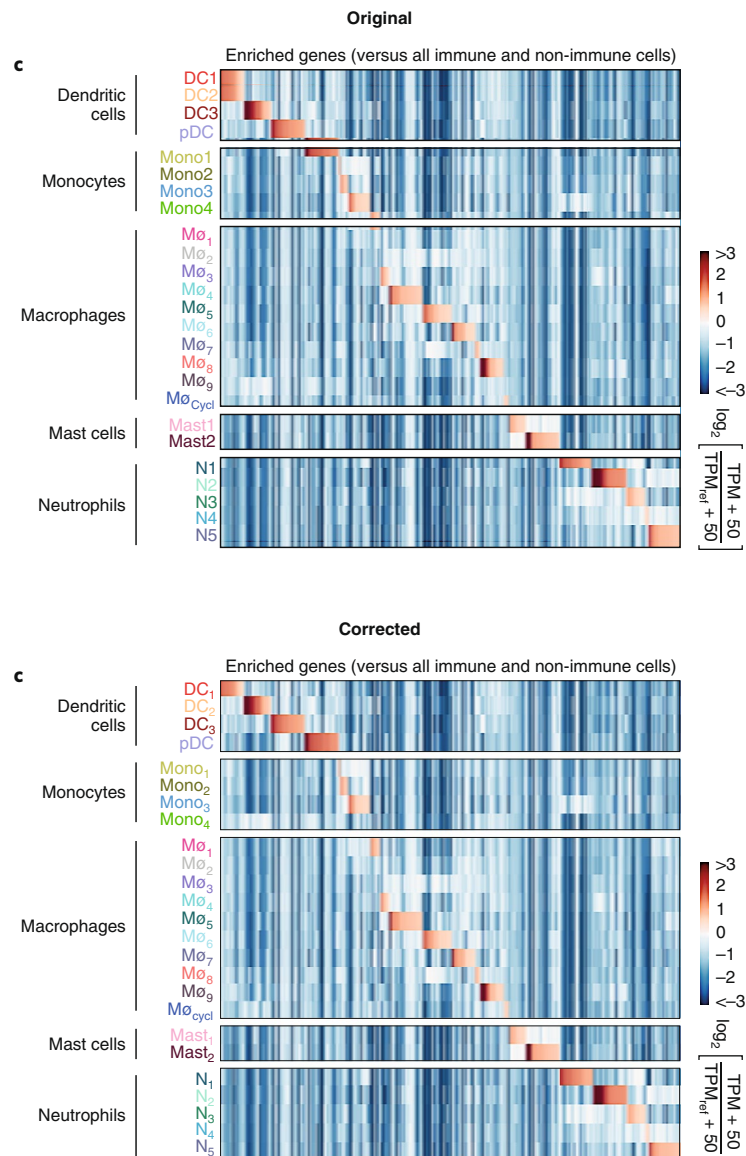


Fig. 1 | Original and Corrected.

Published online: 6 April 2020

<https://doi.org/10.1038/s41551-020-0554-5>

© Springer Nature Limited 2020