

ARTICLE

DOI: 10.1038/s41467-018-07235-5

OPEN

Microevolution of *Neisseria lactamica* during nasopharyngeal colonisation induced by controlled human infection

Anish Pandey¹, David W. Cleary^{1,2,3}, Jay R. Laver¹, Andrew Gorringe⁴, Alice M. Deasy^{5,6}, Adam P. Dale^{1,2}, Paul D. Morris^{5,6}, Xavier Didelot^{7,9}, Martin C.J. Maiden⁸ & Robert C. Read^{1,2,3}

Neisseria lactamica is a harmless coloniser of the infant respiratory tract, and has a mutually-excluding relationship with the pathogen *Neisseria meningitidis*. Here we report controlled human infection with genomically-defined *N. lactamica* and subsequent bacterial microevolution during 26 weeks of colonisation. We find that most mutations that occur during nasopharyngeal carriage are transient indels within repetitive tracts of putative phase-variable loci associated with host-microbe interactions (*pgl* and *lgt*) and iron acquisition (*fetA* promoter and *hpuA*). Recurrent polymorphisms occurred in genes associated with energy metabolism (*nuoN*, *rssA*) and the CRISPR-associated *cas1*. A gene encoding a large hypothetical protein was often mutated in 27% of the subjects. In volunteers who were naturally co-colonised with meningococci, recombination altered allelic identity in *N. lactamica* to resemble meningococcal alleles, including loci associated with metabolism, outer membrane proteins and immune response activators. Our results suggest that phase variable genes are often mutated during carriage-associated microevolution.

¹Clinical and Experimental Sciences, Faculty of Medicine, University of Southampton, Southampton SO166YD, UK. ²Southampton NIHR Biomedical Research Centre, University Hospital Southampton, Southampton SO166YD, UK. ³Institute for Life Sciences, University of Southampton, Southampton SO166YD, UK. ⁴Public Health England, Porton Down, Salisbury SP40JG, UK. ⁵Department of Infection, Immunity and Cardiovascular Disease, University of Sheffield, Sheffield S103JF, UK. ⁶Department of Cardiology, Sheffield Teaching Hospitals NHS Foundation Trust, Sheffield S103JF, UK. ⁷School of Public Health, Faculty of Medicine, Imperial College London, London SW72AZ, UK. ⁸Department of Zoology, Peter Medawar Building, University of Oxford, Oxford OX13SY, UK. ⁹Present address: Department of Statistics, School of Life Sciences, Gibbet Hill Campus, University of Warwick, Coventry CV4 7AL, UK. Correspondence and requests for materials should be addressed to A.P. (email: anishkumarpandey89@gmail.com) or to R.C.R. (email: r.c.read@soton.ac.uk)

Within-host selection of some bacterial species has been investigated in a variety of human niches during natural disease¹. In the respiratory tract, startling levels of genomic change have been observed in pathogens during disease. Examples include diversifying hypermutation among *Burkholderia dolosa* populations² and convergent evolution in *Pseudomonas aeruginosa* sub-lineages, both among sufferers of cystic fibrosis^{3,4}.

At the gene-level, mutations within a small number of loci, mediating DNA mismatch repair systems, can lead to hypermutation among host-pathogen interaction genes². Genetic diversity can also be caused by phase variation resulting from random slipped-strand mispairing in hypermutable, repetitive, polymeric sequences in ‘contingency loci’, such as the lipooligosaccharide biosynthetic genes^{5–7}. These can drive host- or population-specific, selection bottlenecks⁸. The result of this is phenotypic and stochastic variation in both colonisation and disease outcomes, which is enhanced by the acquisition of beneficial genetic material from unrelated organisms through the various mechanisms of horizontal gene transfer⁹.

Colonisation is an important prerequisite for disease⁶, but beyond species-species interactions and clearance, very little is known about how colonising species are impacted by the cumulative challenges experienced when occupying a new niche. Asymptomatic carriage of *Staphylococcus aureus* in the anterior nares is associated with rare adaptive change, but invasive isolates exhibit very little genomic variation compared to carriage isolates^{10,11}. Regarding the nasopharyngeal pathogen *Neisseria meningitidis*, a study contrasting bloodstream and nasal isolates from four individuals found no evidence of gene-specific convergent evolution but detected phase variation in type IV pilus biogenesis loci¹².

Neisseria lactamica is an exclusively human nasopharyngeal commensal with highest prevalence of carriage in infancy. Carriage of *N. lactamica* has an inverse epidemiological relationship with infections caused by *N. meningitidis*¹³. Here, we used two controlled human infection studies to examine the microevolution of *N. lactamica*, a harmless commensal, genetically and phenotypically similar to *N. meningitidis* and *Neisseria gonorrhoeae*¹⁴. Initially, a short-term colonisation study was used to contrast *N. lactamica* collected from in vivo and in vitro passage over a period of 1 month. A second study, the purpose of which was to explore the potential, protective effect of *N. lactamica* colonisation in young adults, a demographic at risk of *Neisseria* infection¹⁵, examined inoculated *N. lactamica*, other wild-type *N. lactamica* and wild-type *N. meningitidis* collected¹⁶, over 6 months of carriage.

In this work, we determine the intra-host genomic diversification of *N. lactamica* over time, comparing this with in vitro dynamics. We contrast the contribution of non-synonymous polymorphisms to that of mutations in contingency loci that drive phase variation. In addition, we examine the frequency of recombination, inferring horizontal gene transfer (HGT) events between both inoculated and wild-type *N. lactamica* with *N. meningitidis*. Using estimates of diversity, we determine the effective population size in colonised individuals. These results offer insights into the impacts on genomic structure and microevolutionary processes in a bacterial coloniser of the human respiratory tract.

Results

Mutations and effective population size. We recovered isolates from throat swabs taken from volunteers who had been inoculated with 10^4 CFU ml⁻¹ of *N. lactamica* Y92–1009 cell bank stock¹⁷ for a short period (1 month) of carriage and compared

them with isolates that underwent in vitro passage for the same period of time (Supplementary Figure 1; additional data in Supplementary Data 1). Isolates that had undergone passage in vitro exhibited a greater number of non-synonymous and stop codon single nucleotide polymorphisms (SNPs). There were also more insertions ($n = 6$ base insertion events) observed during in vitro passage. Isolates from colonised participants had marginally more synonymous SNPs but no insertions, only one deletion and no SNPs introducing premature stop codons. Deleterious mutations observed in the in vitro isolates involved citrate synthase (*gltA*) and pilin subunit (*pilP*) genes and, once fixed in the population, were seen to recur in all subsequent isolates. This contrasts with isolates recovered from volunteers who had undergone controlled infection (ie in vivo), in which almost all SNPs occurred only once per sampling point despite multiple colony sampling. Mutations in *mgo* (Malate:quinone oxidoreductase) and *phrB* which confers resistance to nalidixic acid and rifampicin in *N. gonorrhoeae*¹⁸, were seen to occur in both datasets; however, the position of *mgo* mutations differed while the synonymous *phrA* mutation occurred in the same position in both the in vitro controls as well 2/5 colonised volunteers (Supplementary Data 1).

A greater number of mutations in genes containing hypermutable, polymeric tracts, i.e. phase variable genes, were observed in vivo. These were compared to those identified in vitro over a month. No unique in vitro mutations were identified (i.e. these were also seen in vivo); conversely, novel in vivo changes in repetitive sequences were observed. Two of these genes were primarily associated with the modification of lipooligosaccharide (LOS), known to mediate host-pathogen response (glycosyltransferases; *lgtG* gene). There was also phase variation detected in the specificity subunit (*hsdS*) of the type 1, dual gene, NgoAV restriction modification system and genes implicated in iron acquisition among *Neisseria* spp. (*hpuA* and rubredoxin). Phase variation was also observed in a conserved hypothetical protein with putative glycosyl transferase activity (Table 1). No consistent pattern of phase switching ON vs phase switching OFF was observed among the isolates tested (Supplementary Data 2), however, two genes, the haemoglobin receptor *hpuA* and glycosyltransferase *lgtG* exhibited a significant shift from PHASE ON → OFF in weeks 8 and 4 respectively ($<p = 0.05$ Fisher’s exact test).

Substitution rate estimates were five times greater in the in vitro isolates (7.55×10^{-5} substitutions per site per year) compared to the in vivo isolates (1.45×10^{-5} substitutions per site per year, extrapolated from 1 month of carriage). Tajima’s *D*, a comparison of pairwise differences and segregating sites in a given population of alleles, was used to indicate whether the population was undergoing positive (selective sweeps) or negative selection. Here the statistic was negative (approximately -1) for both in vivo and in vitro (Table 2), an indication of selective sweeps and a function of rare mutations in the population. Additionally, the estimates of effective population size (N_e) were low (~ 18) and approximately the same for both sample sets. Whilst differences appeared in both the rate and type of mutation that occurred during in vivo colonisation, as compared to in vitro passage, the overall impact on population genomic diversity was similar.

Microevolution during long-term *N. lactamica* carriage in humans. In a controlled human infection model, in which 149 volunteers were inoculated with *N. lactamica* intranasally, a total of 95 isolates of *N. lactamica* Y92–1009 and 14 isolates of *N. meningitidis* from 37 participants recovered over 6 months¹⁶ were sequenced. An additional two individuals carried wild-type *N. lactamica* belonging to sequence types other than the inoculum

Table 1 Phase-variable locus mutations observed in comparison of in vitro passage and in vivo colonization during short-term carriage (1 month)

Position	Common genotypes ^a	In vivo only genotypes	Location ^b	Gene/(s)	Details
1,483,216	(G)10→9	(G)10→11	Coding	NEIS1156 (c-hp)	Glycosyl transferase
161,341	(C)12→13	(C)12→11	Coding	NEIS2011 (<i>lgtG</i>) glucosyltransferase	LOS subunit modifier by transferase activity
1,124,158	(G)9→10	(TACGCTGGAAGC) 1-2	Coding	NEIS2362(36) <i>hsdS</i>	Type I restriction modification system, specificity subunit S
1,124,237	(G)9→10	(G)9→11	Coding	NEIS2362(36) <i>hsdS</i>	Type I restriction modification system, specificity subunit S
1,483,216	N/A: in vivo only	(C)10→11	Coding	glycosyl transferase family 2	Glycosyl transferase gene
617,862	N/A: in vivo only	(C)10→9	Coding	<i>hpuA</i>	Haemoglobin-haptoglobin utilisation protein
1,688,136	N/A: in vivo only	(G)13 →12	Intergenic	l-hp/rubredoxin	Large multidomain protein ^c /Rubredoxin: involved in Fe ²⁺ binding
1,717,988	N/A: in vivo only	(C)10→9	Intergenic	<i>ybaB</i> /MDP	DNA binding protein /multidomain protein
1,933,087	(A)28→27	(A)28→26	Intergenic	AutA /hp	Autotransporter A
593,527	(G)10→9	(G)10→12	Intergenic	FetA VRF4-8 ←/→ NEIS1949	Finotyping antigen/GroS chaperone protein folding
189,023	(A)20→19	(A)20→17	Intergenic	NEIS2043: 2 (Thif) →/← NEIS2044: 28	Enzyme activation/hp
837,301	(CTTG)9→10	(CTTG)9→11	Intergenic	hp ←/→ NEIS0842:42	YadA-like C-terminal region/ conserved hypothetical protein
893,705	(T)18→17	(T)18→15	Intergenic	NEIS0978 (396) ←/← NEIS0528(112)	Putative surface fibril protein/putative periplasmic binding protein
893,707	(T)18→17	(T)18→19	Intergenic	NEIS0978 (396) ←/← NEIS0528(112)	Putative surface fibril protein/putative periplasmic binding protein

^aCommon genotypes are those that were found in both in vivo and in vitro datasets

^bLocations are wither within coding sequences or intergenic. For the latter this simply refers to a location outside a known CDS, no inference to upstream promoters has been made

^cMulti Domain Protein contained the following domains (yadA Hia auto transporter, chromosome segregation ATPase, flagellin)

Table 2 Effective population size and Tajima's D calculated for *N. lactamica* Y92-1009 sample sets

<i>N. lactamica</i> Y92-1009 sample set (n)	Tajima's D	θ Tajima (+/- s.d.)	Effective population size (N_e)
In vitro passaged (n = 29) ^a	-1.08	0.13 (+/-0.11)	18.74
In vivo (n = 31) ^a	-0.92	0.12 (+/-0.12)	17.52
In vivo <i>N. lactamica</i> solo colonised (n = 97) ^b	-1.02	0.20 (+/-0.18)	29.79
In vivo <i>N. lactamica</i> co-colonised with <i>N. meningitidis</i> (n = 19) ^b	-0.96	0.26 (+/-0.23)	39.10

Sample sets marked with

^aWere sourced from a short-term clinical study in which isolates were recovered from inoculated volunteers as opposed to in vitro passage. This study took place over a month. Sample sets marked with

^bWere sourced from a long-term, 26-week colonization, experimental human challenge study. S.d. is standard deviation

strain (ST-4192 and ST-11524, $n = 9$ isolates) and are discussed later. In 91% ($n = 32$) of participants, *N. lactamica* was isolated from more than one sampling point over the course of 6 months. In 8 individuals both *N. lactamica* and *N. meningitidis* were isolated, with 4 individuals having simultaneous carriage of both species.

A total of 268 mutations were identified in *N. lactamica* following isolation. The most prevalent (71.6%, $n = 192$), were modifications to repetitive tracts in putatively phase variable loci. A list of genes containing 6–14 nucleotide homopolymeric tracts in the *N. lactamica* Y92-1009 are detailed in Supplementary Data 3. From this list of 98 genes, 11 contingency loci were found in which phase variation recurred longitudinally, within and between volunteers (Fig. 1a, b). All contingency loci were found to contain homopolymeric G/C tracts, despite evidence of A/T tracts among the 98 candidate loci. Genes affected by these mutations were involved in LOS and pilin subunit modification (*lgt* and *pgl* loci), iron acquisition (*hpuA*) and type I restriction-modification (*hsdS*). The hypothetical proteins were assigned putative function as glycosyl transferases (hp and c-hp), and

transferrin binding activity (hp2). While most of these mutations occurred in polymeric tracts located within coding sequence, 28/192 were detected in an intergenic promoter region bordering the *fetA* gene, potentially modulating transcriptional efficiency. All isolates contained changes in the repeat tracts of at least two of these contingency loci.

Transient SNPs in non-phase varying genes were the second most abundant mutations (46/268, 17%). These occurred after various intervals within different volunteers and were detected once. A total of 29 non-synonymous SNPs, 15 synonymous SNPs, 3 insertions, 2 multiple base substitutions and 3 deletion events were observed (Supplementary Data 4).

We defined a persistent mutation as one which was identified in consecutive isolates. A total of 15 SNPs, disseminated among five of the volunteers, were found to persist longitudinally. These were found in lipid-hydrolase protein *rssA*, oxidoreductase *nuoN*, energy synthase *atpC* and CRISPR-associated endonuclease *casI* and two hypothetical proteins. In addition to this, seven deletion events appeared fixed in three volunteers, these affected a large hypothetical protein and are discussed later in this section. The

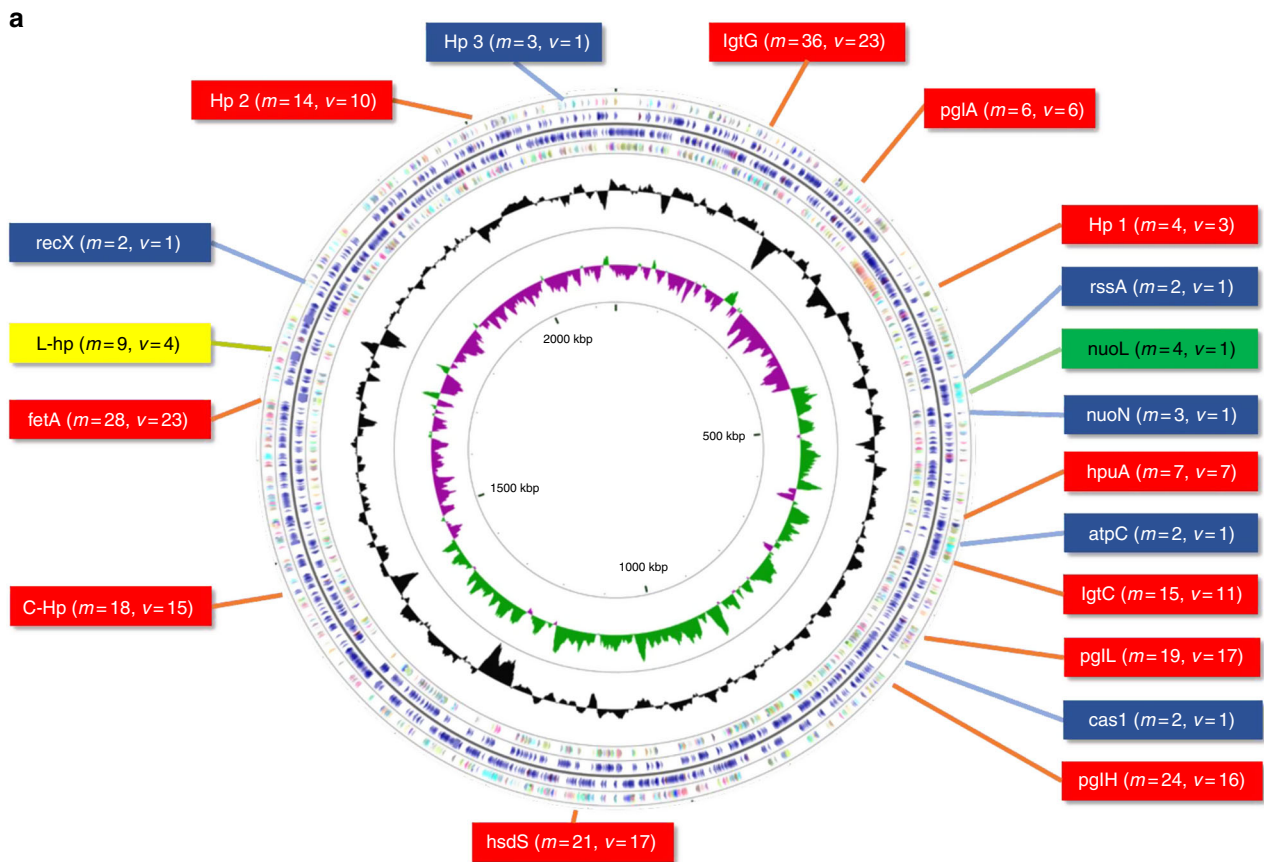


Fig. 1 a, b Mutations that occurred in isolates recovered over 6 months of nasopharyngeal carriage are outlined as follows: changes to repetitive tracts of phase-variable, contingency loci (Red), genes in which SNPs were persistently detected across multiple volunteers (Blue), including an example from the short-term, in vitro VS in vivo study (Green) and the sole gene in which various mutations discovered across multiple timepoints and volunteers (Yellow). m refers to the number of mutations detected in a given gene across v volunteers. The genes are placed in positions relative to their approximate location in the *N. lactamica* Y92-1009 genome. **b** Volunteers in which Single-Nucleotide Polymorphisms (SNPs) were seen are specified in the Volunteer column. Mutations which affected multiple volunteers are quantified in the accompanying figure above. Mutation locations are indicated in the Position column. The type of mutation is given in the mutation column where C tract/G tract refers to a homopolymeric region of cytosine/ guanine repeats where insertions and deletions occurred. PV denotes phase-variable

non-synonymous mutation found in *rssA* has been seen in another *N. lactamica* isolate found via BLASTp against the nr database. The location and nature of the remaining mutations were not identified in either sequence database blast of the entire catalogue of pubMLST *Neisseria* or via non-specific BLASTp against the nr database. Therefore, these are most likely novel polymorphisms found during the course of this study. These persistent mutations were shown alongside the phase variations in Fig. 1a, b and tabulated in Supplementary Data 5.

Convergent mutation was rare in this dataset; however, twelve mutations were found in eight (27%) of the volunteers that localized to a single, large (~10 kb) hypothetical protein (herein referred to as L-hp, accession: ARB05049.1) (Fig. 2). The sequence of this gene is specific to this strain and not detected outside of *N. lactamica* Y92-1009 in a sequence search among all *Neisseria* isolates in the pubMLST.org/neisseria database or non-specific BLASTp against the nr database. The locus is located at position 1,719,272 in the *N. lactamica* Y92-1009 genome, with a GC content (31.3%) that was skewed negatively, compared to the overall GC content of the genome (52.2%) closer towards the mean GC content for *Haemophilus influenzae* (~G + C: 38%). This was the only coding sequence devoid of phase variable tracts found to be targeted by mutation across multiple volunteers. L-hp contained 8 conserved protein domains which included an extended signal peptide of the type V secretion system (pfam13018), A tryptophan-ring motif (pfam15401), supporting a HiaBD2 trimeric autotransporter adhesin (pfam15403), YadA like, left-handed beta roll (cl17507) and four YadA-like C terminal regions (3 copies of cl27224 and pfam03895). Five of the twelve mutations persisted in volunteers 158 and 227, reducing the predicted protein size by 84–93%. Only two of the twelve mutations identified were seen to occur within the domains and both targeted YadA-like C terminal regions. CDART analysis, which contrasts the positions and functions of protein domain architecture but not necessarily sequence similarity, revealed significant homology with other *N. lactamica* strains (score = 5/5, three sequences) and *H. influenzae* (Mean GC content: ~38, score 4/5, thirteen sequences) and *Neisseria cinerea* ATCC 14685 hep/hag repeat protein (score = 4/5, two sequences) but only marginal or non-existent matches to other members of the *Neisseriaceae*. This indicates that three other *N. lactamica* strains possess this exact protein architecture (with regards to domain dissemination and function throughout the protein) with all five domains present, but that fifteen sequences from both *H. influenzae* and *N. cinerea* genomes possess proteins with very similar domain architecture. Protein BLAST analysis identified significant matches (>95% identity) only among other *N. lactamica* Y92-1009 genomes.

Effect of recombination. ClonalframeML was used to detect loci in *N. lactamica* affected by recombination in the core genome ($n = 1595$ core loci) and to quantify the total effect of recombination compared to mutation (r/m) (Table 3). A total of 18 loci were detected as recombinant over the course of this analysis (Table 4). Three of these loci affected by recombination were identified in volunteers ($n = 27$ volunteers) carrying only *N. lactamica* Y92-1009. These included a hypothetical protein (NEIS1708, NMB0444), a putative mafs3 cassette (NEIS1794) and an intracellular septation protein (NEIS1828, NMB0342). The effect of recombination (r/m) was 3.62, based on all volunteer isolates experimentally challenged with *N. lactamica* Y92-1009. Eight volunteers co-carried the experimentally inoculated *N. lactamica* Y92-1009 strain, however isolates from one volunteer were excluded from recombination analysis as only one isolate from *N. meningitidis* and *N. lactamica* was recovered leaving seven

volunteers ($n = 19$ isolates) with wild-type *N. meningitidis* (Table 3). Here the average r/m value was 3.84, which was similar to that seen when the bacterium was not co-colonised with *N. meningitidis*. Only small (<20 bp) importations were detected in volunteers co-carrying experimentally inoculated *N. lactamica* Y92-1009 and *N. meningitidis*. As a result, there were no recombinant loci identified in co-colonised individuals who were experimentally inoculated with *N. lactamica*.

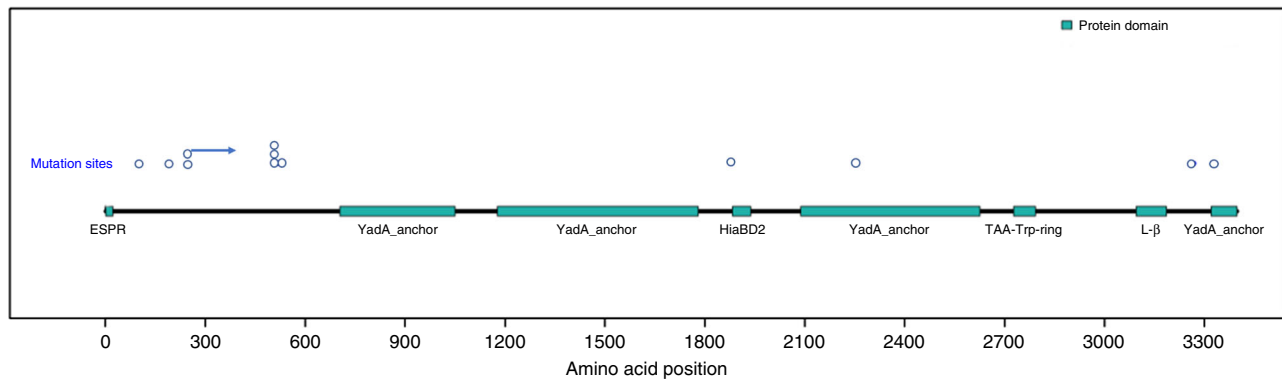
Mutation rates and effective population size. Given the above mutation parameters we estimated the effective population size for the *N. lactamica* inoculum. We inferred a mutation rate in terms of SNPs per site per year. Sixty-four SNPs were detected among twenty-seven volunteers carrying only *N. lactamica* Y92-1009. This yielded a mutation rate of 2.21×10^{-6} substitutions per site per year. Seven SNPs were detected among seven volunteers co-colonised with *N. meningitidis* and were used to infer a mutation rate of 9.32×10^{-7} substitutions per site per year. Therefore, no evidence of an enhanced mutation rate was observed in volunteers co-carrying the inoculated *N. lactamica* and strains of *N. meningitidis*. Tajima's D was found to be negative (approximately -1) for *N. lactamica* isolates examined with or without meningococcal co-colonisation (Table 2). The estimations of effective population size (N_e) were found to be consistently low in all four sets (Table 2).

Recombination between co-colonising *N. lactamica* and *N. meningitidis*. Two volunteers (36 and 291) were found to co-carry naturally acquired *N. lactamica* (ST-4192 and 11524, $n = 9$ isolates) in addition to commensal *N. meningitidis* (ST-41 and ST-10457, $n = 6$ isolates) (Supplementary Table 1). Together, these volunteers accounted for the majority of recombinant loci detected ($n = 15/18$ loci, Table 4). Volunteer 255 was the only individual who was observed to carry more than one *N. meningitidis* ST during this period: a-ST-10478 meningococcus at the first sampling point, followed by a ST-213 *N. meningitidis*. In contrast to the *N. lactamica* Y92-1009 challenge strain, the r/m values were between 3–5 times higher for wild-type *N. lactamica* and *N. meningitidis* (Table 3). The largest r/m (overall effect of recombination calculated as described in Table 3 legend.) detected was 18.06 and was calculated for volunteer 291 wild-type *N. lactamica* and may imply the organism was subject to a recent, interspecific recombination event although it is impossible to verify whether the event occurred before or during the course of the study.

Six recombinant alleles were identified in the *N. lactamica* isolated from volunteer 291 that were also found in the co-carried *N. meningitidis* (Supplementary Figure 2). Of these six alleles, four (NEIS0071, a putative lipoprotein; NEIS0072 & NEIS2514, hypothetical proteins; and NEIS0899, *lst*, a LOS subunit sialyltransferase) were shared by *N. lactamica* and co-colonising *N. meningitidis* recovered from the second and third sampling points. By week 16 however a different allele for these loci was identified in the recovered *N. lactamica*. In contrast, for two loci (NEIS1834, an acyl carrier protein and NEIS1835, a succinyltransferase) it was the week 16 isolates that were found to share the same allele as the meningococci. This might suggest that these recombination events reflect independent exchanges, however this is not possible to determine from this data alone.

Discussion

As anticipated from previous in vitro studies of the meningococcus¹⁹, phase variation was the principle mechanism by which microbial diversity arose in the commensal carried by individuals over 6 months. With the assumption that the mutation rate estimate acquired from the largest number of volunteers ($n = 97$)

a Domains, mutations and mutation ranges introduced in large-hypothetical protein (ARB05049.1)**b** Mutation information

Volunteer	Timepoint (week)	Mutation type	Mutation annotation	Position	Protein size reduction (%)	Methionine start sites introduced
172	26	SNP	E102K (GAA→AAA)	Coding (304/10197 nt)	0	0
172	16	Deletion	Δ997 bp	Coding (0574-1570/10197 nt)	94	1
158	8	Deletion	Δ461 bp	Coding (0747-1207/10197 nt)	93	0
158	26	Deletion	Δ461 bp	Coding (0747-1207/10197 nt)	93	0
227	4	Deletion	Δ1 bp	Coding (1539/10197 nt)	84	1
227	8	Deletion	Δ1 bp	Coding (1539/10197 nt)	84	1
227	16	Deletion	Δ1 bp	Coding (1539/10197 nt)	84	1
315	16	Insertion	GGGGG→GGGGGG	Coding (1577/10197 nt)	84	1
113	16	Deletion	Δ1bp (AAAAA→AAAA)	Coding (5638/10197 nt)	45	1
221	26	Deletion	Δ1 bp	Coding (6762/10197 nt)	34	0
201	26	Insertion	+GG	Coding (9803/10197 nt)	2	5
104	16	Deletion	Δ1 bp	Coding (9990/10197 nt)	2	5

Fig. 2 Domains, mutations and mutation areas of effect introduced in Large-Hypothetical Protein (ARB05049.1) (**a**) with the distribution found between volunteers (**b**). Mutations are coloured blue and white and are listed in **b** in the order they occur along the protein depicted in **a****Table 3** Relative recombination effect (r/m) of isolates in colonised volunteers and the parameters used to infer them

Colonisation	Organism	ST	Isolates (n)	R/theta	Delta ^a	Nu	r/m
Co-colonised	<i>N. lactamica</i> (<i>l</i>) (Y92-1009)	613	97	0.48 (5.7 E ⁻⁴)	35 (2.8 E ⁻²)	0.22 (1.6E ⁻⁵)	3.61
	<i>N. lactamica</i> (<i>l</i>) (Y92-1009)	613	19	0.40 (9.1 E ⁻³)	138 (4.5 E ⁻⁶)	0.11 (9.1 E ⁻⁴)	3.84
	<i>N. lactamica</i> (WT)	11524	3	0.68 (3.0 E ⁻²)	585 (2.1 E ⁻⁷)	0.05 (6.4 E ⁻⁶)	18.06
	<i>N. meningitidis</i> (WT)	41	3	0.38 (1.8 E ⁻³)	403 (7.4 E ⁻⁷)	0.07 (1.2 E ⁻⁶)	10.69
	<i>N. lactamica</i> (WT)	4192	6	0.39 (9.1 E ⁻³)	123 (3.5 E ⁻⁶)	0.19 (1.4 E ⁻⁴)	9.21
	<i>N. meningitidis</i> (WT)	10457	3	0.28 (1.2 E ⁻²)	420 (9.4 E ⁻⁷)	0.07 (4.3 E ⁻⁵)	8.32

The table displays recombination parameters among wild-type (WT) *N. lactamica* and *N. meningitidis* in addition to inoculated (*l*) *N. lactamica* Y92-1009 in single and co-colonised volunteers. The parameters include the relative rate of recombination to mutation (R/theta), the mean length of detected recombinant regions (Delta) and mean divergence level between recipient and donor (Nu). Standard deviations are indicated for these values in the accompanying brackets (X.X E^{-X}). The parameters were multiplied together to generate the relative effect of recombination compared to the relative effect of mutation (r/m). The sequence type (ST) of each collection of organisms is also given

^aDelta is calculated by ClonalFrameML as 1/Delta. This has been resolved in the table to show clearly how r/m was calculated. Standard deviations for this value are for 1/Delta

over the longest period (26 weeks) is the most accurate, the value of 2.21×10^{-6} substitutions per site, per year is in agreement with estimates detected in *N. gonorrhoeae*^{20–22} and *N. meningitidis*²³. Our values for effective population size in the four sample sets (long-term carriage of *N. lactamica* with and without carriage of *N. meningitidis*; short-term carriage in vivo; in vitro passage) were much lower ($N_e = 1–25$) than those recently described among *Escherichia coli* examined over a year²⁴, but comparable to those observed in *Vibrio cholerae*²⁵. These latter two studies, however, examined different organisms in different niches, with the *Vibrio* observations collected during acute infection. A low effective population size may indicate the presence of severe bottlenecks or growth limitation, and our

observations may be an outcome of the dynamic antagonistic and commensal processes that occur among members of the microbiota of the upper respiratory tract²⁶. It is worth noting, too, that, at least in murine models of pneumococcal colonisation, N_e was also found to be low, between 11 and 203, and thus comparable to our findings^{27,28}. Although these numbers are derived from single colony isolates, and thus may not reflect the true genomic heterogeneity of the population [29] the low number of mutations observed longitudinally within individuals suggests the estimation of both mutation rate and N_e are accurate. Moreover, a similar substitution rate of 1.45×10^{-5} SNPs per site per year was observed when multiple colonies were sampled among six volunteers in the short-term study (1 month), this is in contrast to

Table 4 Genes undergoing recombination

Organism	Volunteer	Recombinant NEIS loci	Gene alias	Annotation	Direction of recombination
<i>N. lactamica</i> (I)	166	NEIS1708	NMB0444	hp	Unknown
<i>N. lactamica</i> (I)	133	NEIS1794	N/A	Putative mafS3 cassette	Unknown
<i>N. lactamica</i> (I)	38	NEIS1828	NMB0342	Intracellular septation protein A	Unknown
<i>N. lactamica</i> (WT)	36	NEIS1795	NMC1795	MafI immunity gene: type o2MGI-2	Unknown
<i>N. lactamica</i> (WT)	291	NEIS0069	NMB0085	Sodium glutamate transport	Unknown
<i>N. lactamica</i> (WT)	291	NEIS0073	NMB0088	Outer membrane transport	Unknown
<i>N. lactamica</i> (WT)	291	NEIS1837	NMB0334 (pgi2)	Glycolysis pathway enzyme	Unknown
<i>N. lactamica</i> (WT)	291	NEIS2437	NMB0336	Putative lipoprotein	Unknown
<i>N. lactamica</i> (WT)	291	NEIS0071	NMB0071	Putative lipoprotein	Interspecific
<i>N. lactamica</i> (WT)	291	NEIS0072	NMB0087	hp	Interspecific
<i>N. lactamica</i> (WT)	291	NEIS0899	NMB0922 (lst)	LOS alpha-2,3-sialyltransferase	Interspecific
<i>N. lactamica</i> (WT)	291	NEIS2514	hp	—	Interspecific
<i>N. lactamica</i> (WT)	291	NEIS1834	NMB0336	Enoyl-(acyl carrier protein) reductase	Interspecific
<i>N. lactamica</i> (WT)	291	NEIS1835	NMB0335	N-succinyltransferase	Interspecific
<i>N. meningitidis</i> (WT)	36	NEIS2149	NMB0011	Peptidoglycan (cell wall) biosynthesis	Unknown
<i>N. meningitidis</i> (WT)	36	NEIS2859	hp	—	Unknown
<i>N. meningitidis</i> (WT)	291	NEIS0210	NMB0018 (pilE)	Pilus component synthesis	Unknown
<i>N. meningitidis</i> (WT)	291	NEIS1402	hp	—	Unknown

The table lists genes identified as recombinant in the dataset following analysis by ClonalFrameML. Isolates of *N. lactamica* are differentiated with the labels wild-type (WT) and artificially-inoculated (I). Gene names are given as found on PubMLST *Neisseria* (NEIS loci), in addition to more commonly recognised gene aliases. The label interspecific, refers to loci that shared the same recombinant allele with their co-colonising species during the course of the study

the finding of a substitution rate of 2.21×10^{-6} SNPs per site per year in the long-term study (6 months) across many more volunteers, albeit over a much shorter period of colonisation. Additionally, the bulk (70%) of the mutations observed in the short term in vivo (Supplementary Data 1) cohort occurred once per colony sampled. Mutation prevalence over all colonies at a given time point and mutation recurrence across time points were observed to be rare events.

Purifying selection acts to remove non-beneficial mutations, and our observation that most SNPs were transient, non-recurrent events, combined with a negative Tajima's D value, suggest that diversity was lower than expected, consistent with the population being subject to bottleneck events. Despite this, some non-synonymous SNPs persisted longitudinally in some volunteers, becoming fixed in the sample and staying for at least one further time point. These included non-novel mutations in *rssA* and novel mutations in the *nuoN*, *rssA*, 2 hypothetical proteins and *cas1* loci. The *nuo* operon, which encodes subunits for NADH dehydrogenase complex I, is among those genes up-regulated in iron replete conditions in *N. gonorrhoeae*²⁹ and *N. meningitidis* incubated in human blood³⁰. Cas1 acts as a dsDNA endonuclease in a minimal, self-promoted, CRISPR-Cas type II-C system in *N. lactamica*, that has been postulated to provide adaptive protection to its host from unbeneficial, exogenous, horizontal gene transfer³¹. The persistent mutations in phospholipase RssA represent the first evidence of this gene adapting to the oropharyngeal environment.

Most of the insertion and deletion events not present in contingency loci affected one gene: a large, (~10,000 bp) multi domain hypothetical protein (L-hp). An in-silico simulation of how these mutations might affect protein coding revealed frame-shifted introductions of interproteomic methionine residues and overall reductions in predicted protein size. The L-hp locus was the only region in which mutations were seen to persist in some volunteers. The low GC content of this locus relative to *N. lactamica* Y92-1009 suggests that it may have been horizontally acquired by *N. lactamica* from another nasopharyngeal coloniser, perhaps *H. influenzae*, based on the results from CDART and the

possession of a *H. influenzae* autotransporter domain. This is not uncommon and there are other examples of genes postulated to have been acquired by *N. lactamica* 020-06 from *H. influenzae*, including phosphocholine biogenesis genes *licABCD*, ATPase gene *slpA*, protease gene *slpB* and putative surface fibril protein NLA12600³². The presence of trimeric autoadhesins such as the Yada -like and Hia conserved domains, suggest this protein may have a role in initial attachment of the bacterium to a human host³³. Post-colonisation, it may be that the deletion of these proteins is beneficial, perhaps metabolically or as it is a site for host-recognition.

In conclusion, *N. lactamica* Y92-1009 possesses a stable genome that undergoes stochastic mutation, at a low mutation rate with minimal evidence of recombination or interspecific interaction with co-colonising meningococci, as was demonstrated by wild-type *N. lactamica*. However, the observed genetic changes indicate an important role of phase variation among genes associated with host-commensal interaction and iron acquisition in sustained colonisation of human hosts. A lack of micro-evolutionary evidence in *N. lactamica* isolates co-colonised with *N. meningitidis* suggests that the meningococcal carriage suppression induced by *N. lactamica* may be due to outcompeting the pathobiont for essential resources in the nutrient-limited, nasopharyngeal niche.

Methods

Controlled human infection with *N. lactamica*. *N. lactamica* Y92-1009 was originally isolated during a 1992 carriage study of school pupils in Londonderry, Northern Ireland. Its use in an experimental human challenge model (Clinical Trial Registration: NCT02249598) has been reported previously [16]. The study was approved by the National Health Service Research Ethics Committee (11/YH/0224), was overseen by an independent safety committee, and was conducted in accordance with the Declaration of Helsinki. Written informed consent was gained from participants prior to inclusion in the study. Briefly, 149 participants received nasal challenge with 10^4 CFU of *N. lactamica*. In this group, natural *N. meningitidis* carriage at baseline was 36/149 (24.2% [95% CI, 17.5%–31.8%]). Natural carriage of *N. lactamica* prior to inoculation was observed in 3/149 individuals (1.9% [95% CI, .4%–3.5%]). Following challenge, oropharyngeal swabs were taken at 2, 4, 8, 16, and 26 weeks and were plated directly onto gonococcus (GC)-selective media (E&O Laboratories, Scotland) and incubated at 37 °C in 5% CO₂. After 48 hours,

possible *Neisseria* spp. colonies were subjected to API-NH strip testing (bioMérieux, France) and PCR¹⁶. The isolates were not extensively passaged. Growth was limited to two passages (one for isolation from the host and one for preparation of sequencing). Two weeks after inoculation, oropharyngeal swabs from 48 individuals challenged with *N. lactamica* yielded cultivable *N. lactamica* (33.6% [95% CI, 25.9%–41.9%]), but colonization with *N. lactamica* was detected as late as week 26, by which time colonisation with *N. lactamica* at some point in the study had been confirmed in 61 of 149 (41.0% [95% CI, 33.0%–49.3%]) of the challenge group. All isolates of *N. lactamica* and *N. meningitidis* were cryostored. The study flow is summarised in Supplementary Figure 3.

Choice of *Neisseria* isolates for genomic analysis. The inclusion strategy prioritised the following: (a) isolates from individual volunteers that were recovered from multiple sampling points; (b) isolates from volunteers co-colonised with *N. meningitidis*; and, (c) isolates recovered either early (week 2) in the study or later (week 26), with the rationale that the isolates from earlier time points had undergone adaptation and selection more recently and the isolates at the late time point would have a greater chance of demonstrating signs of convergent evolution, having colonised their respective hosts for the longest period of time. In total 97 *N. lactamica* Y92–1009, 14 *N. meningitidis* and 9 non-Y92–1009 *N. lactamica* isolates were chosen for sequencing and analysis. These isolates are summarised in Supplementary Data 6

Comparison of in vitro passage vs. in vivo colonisation. To compare stochastic mutation during in vitro passage with variation observed intra-host, 10 additional volunteers were intra-nasally inoculated with 10^4 CFU ml⁻¹ *N. lactamica* Y92–1009 stock. Oropharyngeal swabs were used to take samples at days 1, 2, 3, 14 and 28. Colonisation was established in five of the ten volunteers. In vitro serial passages were done in duplicate and in parallel with the in vivo colonisation study. Isolates, consisting of 1–5 colonies, were subcultured on Columbia blood agar every weekday for 28 days. A maximum of five colonies of *N. lactamica* from each sampling point were selected and sequenced.

Culture. Bacterial samples were recovered from cryostorage (–80 °C) and streaked onto Columbia + horse blood plates and cultured overnight at 37 °C. *N. lactamica* colonies were confirmed using X-gal (Sigma Aldrich, USA) in PBS. Two blue colonies were then subcultured into bijoux tubes, each containing 2 ml Tryptic Soy broth with 0.2% yeast extract (Sigma Aldrich, USA). The cultures were grown overnight with agitation at 37 °C.

Genomic DNA extraction. Genomic DNA was extracted using the Wizard Genomic Purification Kit (Promega, USA). Sample purity and concentration (OD 260/280) were assessed using a Nanodrop 1000 spectrophotometer (ThermoFisher, UK) and Qubit 2.0 fluorometer with the BR dsDNA kit (Invitrogen, UK). For long read sequencing of the reference genome, a sample of cell bank purified stock was cultured and extracted using the Gentra Puregene yeast/bacteria kit according to manufacturer's instructions (Qiagen, Germany) to produce 30 µg of high molecular weight (>40 kDa) DNA.

Sequencing. All isolates of *N. lactamica* were sequenced using an Illumina HiSeq 2000 instrument as described previously³⁴ to generate 2 × 151 bp PE libraries. For the reference genome, high molecular weight DNA was pooled and sequenced using the Pacific Biosciences RSII instrument as outlined in¹⁷ (Earlham institute, Norwich). Data for the reference strain is available on NCBI with accession CP019894.

Genome assembly, correction and annotation. Reads were assembled using velvet optimiser and added to the PubMLST *Neisseria* database³⁵ [https://pubmlst.org/neisseria/]. The resultant contigs were annotated using automated processes to identify specific loci using the PubMLST.org/*neisseria* 'NEIS loci' catalogue³⁶. The reference genome was assembled at the Earlham institute (as described in¹⁷). Error correction of the reference was done with Illumina reads using Pilon v1.17³⁷. Annotation was done using Prokka v1.11³⁸ aided by a curated protein list from *N. lactamica* 020-06 (accession: FN995097).

Mutational and recombination analyses. Mutational analysis was performed by mapping reads against the reference genome assembly using the breseq v0.23b pipeline³⁹. In addition, in order to determine the novelty of persistent, volunteer-specific, and in one case, non-specific non synonymous mutations identified in this study, the specific location and amino acid changes relative to that position of mutants were searched via sequence database BLAST of the entire *Neisseria* loci catalogue hosted on pubMLST *Neisseria* database and via non-specific BLASTp against the nr database.

Recombination analysis was done using ClonalFrameML v1.25 (CFML)⁴⁰ using core XMFA alignments and a core genome, maximum-likelihood (ML) tree as input. The genome comparator tool [https://pubmlst.org/neisseria/] was used to determine core NEIS loci. Before generating an alignment, the NEIS loci were exported in FASTA format and screened for paralogues using CD-HIT v4.6.4⁴¹

which were excluded from the pool of core NEIS loci. The genome comparator tool was then used to output core XMFA and FASTA alignments, the former to be used as input to CFML, the latter to be used to construct a ML tree. The ML tree was created by converting the FASTA alignment to PHYLIP format using EMBOSS seqret v6.6⁴² and running PHYML v20131022⁴³ on the PHYLIP alignment using the HKY85 model. This process also outputted a transition/transversion ratio to be used as the -kappa input parameter in CFML. ML trees were converted to binary format using the R package ape v3.0⁴⁴. The use of XMFA files with CFML introduced 1000 bp spacer segments between each gene in the alignment. The subsequent data on the location of recombinant alleles was adjusted to correctly confirm their identity. Any recombinant alleles were examined manually using mView⁴⁵ to confirm significant divergence suggesting recombination instead of false positives due to interspersed, minor mutation events.

Phase variation ON VS OFF statistics. Six genes, *igtG*, *igtC*, *pglA*, *pglH*, *hsdS* and *hpuA* were tested for significant differences in phase ON vs phase OFF status in weeks 2, 4, 8, 16 and 26. These six were tested as we limited the analysis to those that underwent at least one phase variation and where putative ON/OFF expression status data was available in the literature from other *Neisseria* spp.^{46,47}. In addition, *jetA* was excluded as this is not an ON/OFF phase variable event but a promoter-dependent modulator for transcriptional efficacy, the role of which is unconfirmed in this *Neisseria* spp. Fishers exact tests using 2 × 2 contingency tables were tested in GraphPad Prism contingency table calculator⁴⁸. The input into the table was the number of isolates for an early time point which had putative phase ON copy numbers vs putative phase OFF copy numbers. The second row of the contingency table contains the isolates with ON/OFF copy number for the later time point to be tested. When testing isolates in week 2, null values were used in place of week zero samples in the contingency table.

Protein sequence analysis. Where applicable, hypothetical proteins were investigated using the conserved domain architecture tool⁴⁹, which was used to meta-analyze the predicted protein domains. These domains, alongside any mutations that were seen to occur during longitudinal carriage, were used as input for plot protein⁵⁰ to generate a protein diagram. In silico translations to determine effects of mutation on protein size were examined using Expasy translate⁵¹.

Effective population size, selection and mutation rate calculations. Core loci alignments, generated as described above, were used as input for the R package PopGenome⁵² to test for selection using Tajima's D⁵³ and to calculate diversity via Tajima's theta (θ). The mean values for Tajima's D and θ were taken and the standard deviation of the population was calculated. Mutation rate (m) was calculated as the number of SNPs per site per year. Effective population size (N_e) was estimated by rearranging the formula $\theta = 2gN_e m L$ to $N_e = \theta / (2m g L)$ ⁵⁴, where θ is the mean genetic diversity using Tajima's theta, m is the mutation rate per site per year, g is the generation rate (estimated to be roughly one cell division per day: 1/365) and L is the genome length (2,146,723 bp).

Data availability

The complete reference genome is available¹⁷ as published work and on GenBank (accession: CP019894.1). One of the major proteins of interest dubbed "l-hp" can be found at accession number ARB05049.1. Sample assemblies and reads from the long-term study have been deposited in the European Nucleotide Archive (ENA) and can be accessed using the study access code PRJEB9839. A full list including volunteer codes, isolates, and ENA accession codes is shown in Supplementary Data 7. Sample assemblies and reads can also be accessed by searching for the "ID number" (displayed in Supplementary Data 7) in the PubMLST *Neisseria* isolate search page [https://pubmlst.org/bigdb?db=pubmlst_neisseria_isolates&page=query]. The database can be queried in the following manner. The Isolate Provenance Field must be changed to "ID". The value in the middle must be left as an "=" sign. The ID number can be now entered and submitted. Other data supporting the findings of the study are available in this article and its Supplementary Information files, or from the corresponding authors upon request.

Received: 9 May 2018 Accepted: 17 October 2018

Published online: 12 November 2018

References

- Didelot, X., Walker, A. S., Peto, T. E., Crook, D. W. & Wilson, D. J. Within-host evolution of bacterial pathogens. *Nat. Rev. Microbiol.* **14**, 150–162 (2016).
- Lieberman, T. D. et al. Genetic variation of a bacterial pathogen within individuals with cystic fibrosis provides a record of selective pressures. *Nat. Genet.* **46**, 82–87 (2013).
- Marvig, R. L., Sommer, L. M., Molin, S. & Johansen, H. K. Convergent evolution and adaptation of *Pseudomonas aeruginosa* within patients with cystic fibrosis. *Nat. Genet.* **47**, 57–64 (2015).

4. Feliziani, S. et al. Coexistence and Within-Host Evolution of Diversified Lineages of Hypermutable *Pseudomonas aeruginosa* in Long-term Cystic Fibrosis Infections. *PLoS Genet.* **10**, e1004651 (2014).
5. Ochman, H., Lawrence, J. G. & Groisman, E. A. Lateral gene transfer and the nature of bacterial innovation. *Nature* **405**, 299–304 (2000).
6. Siegel, S. J. & Weiser, J. N. Mechanisms of bacterial colonization of the respiratory tract. *Annu. Rev. Microbiol.* **69**, 425–444 (2015).
7. Richardson, A. R., Yu, Z., Popovic, T. & Stojiljkovic, I. Mutator clones of *Neisseria meningitidis* in epidemic serogroup a disease. *Proc. Natl Acad. Sci. USA* **99**, 6103–6107 (2002).
8. Aidley, J., Rajopadhye, S., Akinyemi, N. M., Lango-Scholey, L. & Bayliss, C. D. Nonspecific bottlenecks control the divergence and diversification of phase-variable bacterial populations. *MBio* **8**, e02311 (2017).
9. Crofts, A. A. et al. *Campylobacter jejuni* transcriptional and genetic adaptation during human infection. *Nat. Microbiol.* **3**, 494–502 (2018).
10. Young, B. C. et al. Evolutionary dynamics of *Staphylococcus aureus* during progression from carriage to disease. *Proc. Natl Acad. Sci.* **109**, 4550–4555 (2012).
11. Golubchik, T. et al. Within-Host Evolution of *Staphylococcus aureus* during Asymptomatic Carriage. *PLoS ONE* **8**, e61319 (2013).
12. Klughammer, J. et al. Comparative genome sequencing reveals within-host genetic changes in *neisseria meningitidis* during invasive disease. *PLoS ONE* **12**, e0169892 (2017).
13. Gold, R., Goldschneider, I., Lepow, M. L., Draper, T. F. & Randolph, M. Carriage of *Neisseria meningitidis* and *Neisseria lactamica* in infants and children. *J. Infect. Dis.* **137**, 112–121 (1978).
14. Sheikhi, R. et al. Comparative proteomics analysis of two strains of *Neisseria meningitidis* serogroup B and *Neisseria lactamica*. *Jundishapur J. Microbiol.* **8**, e25228 (2015).
15. Jeppesen, C. A. et al. Meningococcal carriage in adolescents in the United Kingdom to inform timing of an adolescent vaccination strategy. *J. Infect.* **71**, 43–52 (2015).
16. Deasy, A. M. et al. Nasal inoculation of the commensal *Neisseria lactamica* inhibits carriage of *Neisseria meningitidis* by young adults: a controlled human infection study. *Clin. Infect. Dis.* **60**, 1512–1520 (2015).
17. Pandey, A. K. et al. *Neisseria lactamica* Y92-1009 complete genome sequence. *Stand. Genom. Sci.* **12**, 41 (2017).
18. Cahoon, L. A., Stohl, E. A. & Seifert, H. S. The *Neisseria gonorrhoeae* photolyase orthologue *phrB* is required for proper DNA supercoiling but does not function in photo-reactivation. *Mol. Microbiol.* **79**, 729–742 (2011).
19. Moxon, R., Bayliss, C. & Hood, D. Bacterial contingency loci: the role of simple sequence DNA repeats in bacterial adaptation. *Annu. Rev. Genet.* **40**, 307–333 (2006).
20. Grad, Y. H. et al. Genomic epidemiology of *Neisseria gonorrhoeae* with reduced susceptibility to cefixime in the USA: A retrospective observational study. *Lancet Infect. Dis.* **14**, 220–226 (2014).
21. Ezewudo, M. N. et al. Population structure of *Neisseria gonorrhoeae* based on whole genome data and its relationship with antibiotic resistance. *PeerJ* **3**, e806 (2015).
22. Didelot, X. et al. Genomic analysis and comparison of two gonorrhoea outbreaks. *MBio* **7**, e00525 (2016).
23. Lamelas, A. et al. Emergence of a new epidemic *neisseria meningitidis* serogroup a clone in the African meningitis belt: High-resolution picture of genomic changes that mediate immune evasion. *MBio* **5**, e01974 (2014).
24. Ghalayini, M. et al. “Evolution of a dominant natural isolate of *Escherichia coli* in the human gut over a year suggests a neutral evolution with reduced effective population size”. *Appl. Environ. Microbiol.* **84**, e02377–17 (2018).
25. Levade, I. et al. *Vibrio cholerae* genomic diversity within and between patients. *Microb. Genomics* <https://doi.org/10.1099/mgen.0.000142> (2017).
26. Cleary, D. W. & Clarke, S. C. The nasopharyngeal microbiome. *Emerg. Top. Life Sci.* **1**, 297 LP–297312 (2017).
27. McKernan, K. J. et al. Sequence and structural variation in a human genome uncovered by short-read, massively parallel ligation sequencing using two-base encoding. *Genome Res.* **19**, 1527–1541 (2009).
28. Li, Y., Thompson, C. M., Trzciński, K. & Lipsitch, M. Within-host selection is limited by an effective population of *Streptococcus pneumoniae* during nasopharyngeal colonization. *Infect. Immun.* **81**, 4534–4543 (2013).
29. Jackson, L. A. et al. Transcriptional and functional analysis of the *Neisseria gonorrhoeae* *fur* regulon. *J. Bacteriol.* **192**, 77–85 (2010).
30. Echenique-Rivera, H. et al. Transcriptome analysis of *Neisseria meningitidis* in human whole blood and mutagenesis studies identify virulence factors involved in blood survival. *PLoS Pathog.* **7**, e1002027 (2011).
31. Zhang, Y. et al. Processing-Independent CRISPR RNAs Limit Natural Transformation in *Neisseria meningitidis*. *Mol. Cell* **50**, 488–503 (2013).
32. Bennett, J. S. et al. Independent evolution of the core and accessory gene sets in the genus *Neisseria*: insights gained from the genome of *Neisseria lactamica* isolate 020-06. *BMC Genom.* **11**, 652 (2010).
33. Łyskowski, A., Leo, J. C. & Goldman, A. Structure and biology of trimeric autotransporter adhesins. *Adv. Exp. Med. Biol.* **715**, 143–158 (2011).
34. Bratcher, H. B., Corton, C., Jolley, K. A., Parkhill, J. & Maiden, M. C. J. A gene-by-gene population genomics platform: De novo assembly, annotation and genealogical analysis of 108 representative *Neisseria meningitidis* genomes. *BMC Genomics* **15**, 1138 (2014).
35. Jolley, K. A. & Maiden, M. C. J. BIGSdb: Scalable analysis of bacterial genome variation at the population level. *BMC Bioinforma.* **11**, 595 (2010).
36. Harrison, O. B. et al. *Neisseria* genomics: current status and future perspectives. *Pathog. Dis.* **75**, ftx060 (2017).
37. Walker, B. J. et al. Pilon: an integrated tool for comprehensive microbial variant detection and genome assembly improvement. *PLoS ONE* **9**, e112963 (2014).
38. Seemann, T. Prokka: Rapid prokaryotic genome annotation. *Bioinformatics* **30**, 2068–2069 (2014).
39. Deatherage, D. E. & Barrick, J. E. Identification of mutations in laboratory-evolved microbes from next-generation sequencing data using *breseq*. *Methods Mol. Biol.* **1151**, 165–188 (2014).
40. Didelot, X. & Wilson, D. J. ClonalFrameML: efficient inference of recombination in whole bacterial genomes. *PLoS Comput. Biol.* **11**, e1004041 (2015).
41. Fu, L., Niu, B., Zhu, Z., Wu, S. & Li, W. CD-HIT: Accelerated for clustering the next-generation sequencing data. *Bioinformatics* **28**, 3150–3152 (2012).
42. Rice, P., Longden, I. & Bleasby, A. EMBOS: The European Molecular Biology Open Software Suite. *Trends Genet.* **16**, 276–277 (2000).
43. Guindon, S., Delsuc, F., Dufayard, J. F. & Gascuel, O. Estimating maximum likelihood phylogenies with PhyML. *Methods Mol. Biol.* **537**, 113–137 (2009).
44. Popescu, A. A., Huber, K. T. & Paradis, E. Ape 3.0: New tools for distance-based phylogenetics and evolutionary analysis in R. *Bioinformatics* **28**, 1536–1537 (2012).
45. Brown, N. P., Leroy, C. & Sander, C. MView: a web-compatible database search or multiple alignment viewer. *Bioinformatics* **14**, 380–381 (1998).
46. Churchward, C. P. et al. Phase variable DNA repeats in *Neisseria gonorrhoeae* influence transcription, translation, and protein sequence variation. *Microb. Genomics* <https://doi.org/10.1099/mgen.0.000078> (2016).
47. Snyder, L. A. S., Butcher, S. A. & Saunders, N. J. Comparative whole-genome analyses reveal over 100 putative phase-variable genes in the pathogenic *Neisseria* spp. *Microbiology* **147**, 2321–2332 (2001).
48. Miller, J. M. GraphPad PRISM. *Analysis* <https://www.graphpad.com> (2003).
49. Geer, L. Y., Domrachev, M., Lipman, D. J. & Bryant, S. H. CDART: Protein homology by domain architecture. *Genome Res.* **12**, 1619–1623 (2002).
50. Turner, T. Plot protein: Visualization of mutations. *J. Clin. Bioinforma.* **3**, 14 (2013).
51. Gasteiger, E. et al. ExPASy: The proteomics server for in-depth protein knowledge and analysis. *Nucleic Acids Res.* **31**, 3784–3788 (2003).
52. Pfeifer, B., Wittelsbürger, U., Ramos-Onsins, S. E. & Lercher, M. J. PopGenome: an efficient swiss army knife for population genomic analyses in R. *Mol. Biol. Evol.* **31**, 1929–1936 (2014).
53. Tajima, F. Statistical method for testing the neutral mutation hypothesis by DNA polymorphism. *Genetics* **123**, 585–595 (1989).
54. Didelot, X. et al. Genomic evolution and transmission of *Helicobacter pylori* in two South African families. *Proc. Natl Acad. Sci. USA* **110**, 13880–13885 (2013).

Acknowledgements

This project was supported by funding from the UK Medical Research Council: MR/N013204/1 and MR/026993/1, The Sir Christopher Benson Studentship (University of Southampton), the Wessex Institute of Virology and Infectious Disease and the Southampton NIHR Biomedical Research Centre. This publication made use of the PubMLST website [<https://pubmlst.org/>] developed by Keith Jolley and Martin Maiden³⁵ and sited at the University of Oxford. The development of that website was funded by the Wellcome Trust. We also made use of the iridis4 compute cluster [<https://www.southampton.ac.uk/isolutions/staff/iridis.page>] hosted at the University of Southampton and wish to thank the HPC support staff in particular, Dr Elena Vataga.

Author contributions

A.P. performed the analyses described within and wrote the first draft of the manuscript. D.W.C. suggested further analyses and alongside R.C.R. helped construct the manuscript and revisions. J.R.L., A.G., X.D. and M.C.J.M. helped with study design, analysis and made suggestions/corrections to the manuscript. P.D.M., A.P.D., A.M.D. and R.C.R.

conceived and executed the two clinical studies from which the study isolates were sourced.

Additional information

Supplementary Information accompanies this paper at <https://doi.org/10.1038/s41467-018-07235-5>.

Competing interests: The authors declare no competing interests.

Reprints and permission information is available online at <http://npg.nature.com/reprintsandpermissions/>

Publisher's note: Springer Nature remains neutral with regard to jurisdictional claims in published maps and institutional affiliations.



Open Access This article is licensed under a Creative Commons Attribution 4.0 International License, which permits use, sharing, adaptation, distribution and reproduction in any medium or format, as long as you give appropriate credit to the original author(s) and the source, provide a link to the Creative Commons license, and indicate if changes were made. The images or other third party material in this article are included in the article's Creative Commons license, unless indicated otherwise in a credit line to the material. If material is not included in the article's Creative Commons license and your intended use is not permitted by statutory regulation or exceeds the permitted use, you will need to obtain permission directly from the copyright holder. To view a copy of this license, visit <http://creativecommons.org/licenses/by/4.0/>.

© The Author(s) 2018