

# Kinetin Improves *IKBKAP* mRNA Splicing in Patients With Familial Dysautonomia

FELICIA B. AXELROD, LEONARD LIEBES, GABRIELLE GOLD-VON SIMSON, SANDRA MENDOZA, JAMES MULL, MAIRE LEYNE, LUCY NORCLIFFE-KAUFMANN, HORACIO KAUFMANN, AND SUSAN A. SLAUGENHAUPT

Departments of Pediatrics [F.B.A., G.G.S.], Neurology [F.B.A., H.K.], Medicine [L.L., S.M.], and Physiology and Neuroscience [L.N.-K.], New York University School of Medicine, New York, New York 10016; Department of Neurology (Genetics), Center for Human Genetic Research [J.M., M.L., S.A.S.], Massachusetts General Hospital, Boston, Massachusetts 02114

**ABSTRACT:** Familial dysautonomia (FD) is caused by an intronic splice mutation in the *IKBKAP* gene that leads to partial skipping of exon 20 and tissue-specific reduction in I- $\kappa$ -B kinase complex-associated protein/elongation protein 1 (IKAP/ELP-1) expression. Kinetin (6-furfurylaminopurine) has been shown to improve splicing and increase WT *IKBKAP* mRNA and IKAP protein expression in FD cell lines and carriers. To determine whether oral kinetin treatment could alter mRNA splicing in FD subjects and was tolerable, we administered kinetin to eight FD individuals homozygous for the splice mutation. Subjects received 23.5 mg/Kg/d for 28 d. An increase in WT *IKBKAP* mRNA expression in leukocytes was noted after 8 d in six of eight individuals; after 28 d, the mean increase compared with baseline was significant ( $p = 0.002$ ). We have demonstrated that kinetin is tolerable in this medically fragile population. Not only did kinetin produce the desired effect on splicing in FD patients but also that effect seems to improve with time despite lack of dose change. This is the first report of a drug that produces *in vivo* mRNA splicing changes in individuals with FD and supports future long-term trials to determine whether kinetin will prove therapeutic in FD patients. (*Pediatr Res* 70: 480–483, 2011)

Familial dysautonomia (FD), also known as Riley Day syndrome or hereditary sensory and autonomic neuropathy type III, is a rare fatal autosomal recessive disease, which impairs the development of sensory and autonomic nerves (1). Affected patients have characteristic alacrima, depressed tendon reflexes, decreased pain and temperature perception, gastrointestinal dysmotility (1,2), and afferent baroreflex failure resulting in extreme blood pressure volatility (3). The leading causes of death include respiratory infections, renal failure, and unexpected sleep death (4). Current treatments are limited to supportive measures and are not always effective.

In 2001, we discovered that the disease was caused by mutations in I- $\kappa$ -B kinase complex-associated protein (*IKBKAP*) gene, leading to a deficiency of I- $\kappa$ -B kinase complex-associated protein (IKAP)/elongation protein 1 (ELP-1) (5). IKAP, also known as ELP-1, is an essential

component of the human elongator complex, which promotes the transcriptional elongation of a number of target genes (6). Ninety-nine percent of patients with FD are homozygous for the IVS20+6T>C mutation (5), which weakens the splice site, causing variable, tissue-specific skipping of exon 20 in the transcribed RNA message, resulting in reduced protein expression of IKAP. Interestingly, the splicing abnormality primarily affects neuronal tissue, which produces mostly the shortened or mutant *IKBKAP* mRNA and a minimal amount of functional protein product (5,7). Other cells, like fibroblasts, produce almost equal levels of the normally spliced or WT *IKBKAP* mRNA and mutant *IKBKAP* mRNA.

As a result of a National Institute of Neurological Disorders and Stroke-sponsored drug screen (8), kinetin (6-furfurylaminopurine), a dietary supplement, was shown to rescue the splicing abnormality and restore normal IKAP protein levels in FD fibroblasts and transformed lymphoblast lines after only 1 wk in culture (9,10). Recently, the ability of kinetin to correct the splicing defect was also demonstrated in induced pluripotent FD stem cell-derived neural crest precursors from fibroblasts (11) and olfactory stem cells (12). Animal studies showed that kinetin was well absorbed orally, followed first-order elimination, was distributed into plasma and into the CNS, and was not a clastogenic agent (Sitek studies No. 0849-M208, No. 0849-1721.4, No. 0849-1731.C, SITEK Research Laboratories, Rockville, MD, 2005–2007).

Initial clinical studies of kinetin were performed in carriers of the IVS20+6T>C mutation, which despite being asymptomatic have some degree of mis-splicing and decreased levels of WT *IKBKAP* mRNA (13). Encouragingly, after receiving kinetin for 8 d, an increase in WT *IKBKAP* mRNA was found in circulating leukocytes. Here, we report the result of a pharmacokinetics study and 1 mo trial of kinetin in patients with FD.

## METHODS

**Study population.** Eight individuals with FD (mean age  $36 \pm 9$  y; 2 males; Table 1), who were homozygous for the IVS20+6T>C mutation, were enrolled in the study. Subjects were recruited from the FD registry database at the Dysautonomia Center of the New York University School of Medicine.

**Abbreviations:** AUC, area under curve;  $C_{max}$ , maximum plasma concentration; ELP-1, elongation protein 1; FD, familial dysautonomia; *IKBKAP*, I- $\kappa$ -B kinase complex-associated protein gene; IKAP, I- $\kappa$ -B kinase complex-associated protein;  $T_{max}$ , time of maximal concentration

Received February 28, 2011; accepted May 10, 2011.

Correspondence: Felicia B. Axelrod, M.D., NYU Dysautonomia Center, NYU Langone Medical Center, 530 First Avenue, suite 9Q, New York, NY 10016; e-mail: felicia.axelrod@nyumc.org

Supported by CTSI Grant 1UL1RR029893 and grants from the NIH General Clinical Research Centers Program of the National Center for Research Resources M01 RR-00096; NIH NS058318, NS036326, U54NS065736; FDA FD-R-3731-01, and awards from the Dysautonomia Foundation, Inc, New York, NY.

The authors report no conflicts of interest.

**Table 1.** Demographics and pharmacokinetics

Demographics				Pharmacokinetics				
No.	Weight (kg)	Gender	Age (y)	Administration Route	Total daily dose (mg)	AUC (ng/mL·h)	$T_{max}$ (h)	$C_{max}$ (ng/mL)
1	41	F	28	Gastrostomy	1000	21,001	0.96	2715
2	46	M	30	Oral	1000	7195	1.74	1521
3	64	F	46	Oral	1500	10,320	1.22	2267
4	51	F	33	Gastrostomy	1000	5542	1.81	724
5	50	F	24	Oral	1250	48,889	3.85	4673
6	56	F	49	Oral	1250	33,307	1.81	6521
7	45	F	37	Oral	1250	9925	1.42	2103
8	60	M	37	Gastrostomy	1500	26,152	2.56	2715

NYU School of Medicine Institutional Research Board approved the study and informed consent was obtained from all participants.

**Study preparation.** Patients were admitted to the General Clinical Research Center (Bellevue Hospital, New York, NY). An indwelling venous catheter was inserted. Vital signs were measured and baseline bloods obtained to establish pretreatment *IKBKAP* mRNA levels and safety parameters. The daily dose of kinetin for each patient was calculated based on weight as 23.5 mg/kg. This dose was identical to the dose used in the carrier study (13), which was extrapolated from cell culture data (9,10). The initial kinetin dose was administered in the morning, 2 h after eating. Doses ranged from 1000 to 1500 mg (Table 1). The kinetin was given in clear capsules containing 250 mg kinetin and 120 mg of maltodextrin (Nature's Best, Inc., Hauppauge, NY). Dosages were administered either *via* the gastrostomy tube or by mouth. Standard meals were served throughout the day.

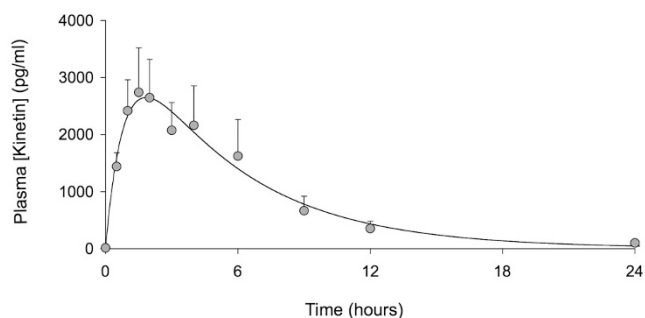
**Kinetin pharmacokinetics study.** To determine the pharmacokinetics of kinetin, blood was drawn 2 h before the single dose of kinetin was given. Blood samples were repeated after 0.5, 1, 1.5, 2, 3, 4, 6, 9, 12, and 24 h. All blood samples were taken after 10 min in the seated position. At the 8-d follow-up visit, blood was obtained 2 h after the morning kinetin dose to measure plasma kinetin levels.

**One-month safety and tolerability study.** After completing the pharmacokinetics study, patients were discharged from the General Clinical Research Center and instructed to continuing taking the same kinetin dose once daily for 28 consecutive days. Participants returned weekly for repeat safety bloods and clinical assessment.

**Measurement of plasma kinetin levels.** Whole blood was collected in heparinized tubes. After centrifugation (10 min at 2000 × g), the plasma was extracted and stored in aliquots at -20°C. Kinetin levels were determined using a validated solid-phase extraction method using caffeine (2.5 ng) as an internal standard and Varian Bond Elut 200 mg C18 extraction columns (Varian, Lake Forest, CA). One milliliter plasma was mixed with 70 μL of 1N acetic acid. The extraction columns were activated with 3 mL of acetonitrile and washed with 3 mL of distilled H<sub>2</sub>O. The kinetin containing plasma sample (1 mL) was applied to the extraction column followed by 2 mL of distilled H<sub>2</sub>O. The kinetin was eluted with the addition of 1 mL methanol. The samples were taken to dryness by vacuum centrifugation. Before analysis, the samples were reconstituted with 250 μL of the A component of the mobile-phase buffer (5% acetonitrile/H<sub>2</sub>O pH = 3.0); 100 μL was injected into the analytical system *via* a WISP 717 autosampler (Waters, Milford, MA). The analysis used a 15-min linear gradient to 90% acetonitrile/H<sub>2</sub>O, (B component) followed by a 5-min isocratic B, and then a 5-min linear return to A mobile phase using Knauer type 42 pumps (Sonntek, Saddle River, NJ) controlled by Pyramid software (Axxiom Chromatography, Moorepark, CA). The reverse phase HPLC used a Luna C18, 3 μ analytical column (4.6 × 150 mm; Phenomenex, Torrance, CA) with ultraviolet detection at 280 nm. The assay for kinetin was linear over the range of 0.05 to 5.0 μg/mL. We used nonlinear models available in Winnonlin 5.1 (Pharsight, Sunnyvale, CA) to calculate values of maximum plasma concentration ( $C_{max}$ ) and times of maximal concentration ( $T_{max}$ ), the area under curve (AUC), elimination rate constant ( $K_{el}$ ), and time of half-life ( $T_{1/2}$ ).

**Measurement of *IKBKAP* mRNA levels.** Blood samples for *IKBKAP* mRNA were obtained before administration of the first kinetin dose and then at 8 d and at 28 d. Five milliliter of blood was collected into two vacutainers using the PAXgene Blood RNA System containing the PreAnalytiX reagent (PreAnalytiX, Switzerland) to stabilize intracellular RNA.

As previously described (13,14), RNA extraction and quantification were performed, and the relative amount of WT *IKBKAP* mRNA was measured using semi-quantitative RT-PCR. Briefly, the relative amount of spliced transcripts was determined using an Alpha 2000 Imager Analyzer (BioRad, Hercules, CA) and Image Quant QL (Amersham, Piscataway, NJ) software,



**Figure 1.** Venous plasma levels of kinetin after administration ( $n = 8$ , data are mean  $\pm$  SEM). Time zero represents the time of drug administration.

using the integrated density value for each band. These values were then expressed as percent exon inclusion *i.e.* the percent of *IKBKAP* transcript produced that contains exon 20 (10).

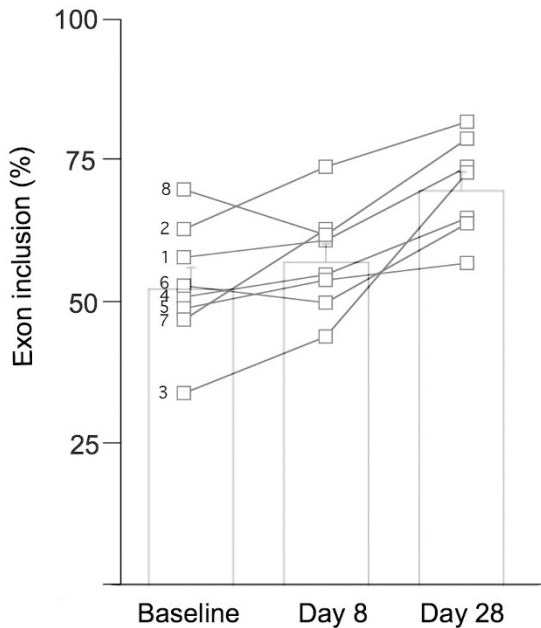
**Statistics.** A repeated-measure ANOVA was used to compare *IKBKAP* mRNA exon inclusion levels at baseline, d 8 and d 28. Statistical analyses were performed using SPSS (version 14.0). Data are shown as mean  $\pm$  SD, unless otherwise stated. The  $p$  values of 0.05 or less were considered statistically significant.

## RESULTS

**Kinetin absorption.** Seven of the eight subjects completed the trial; one subject (female, 37 y old) developed a community-acquired respiratory infection after 21-d of receiving kinetin and was withdrawn from the study. Based on the extrapolation of efficacy data obtained in cell culture studies (9), the target kinetin level was a plasma concentration ( $C_{max}$ ) of 2150 ng/mL. Only subjects 2 and 4 did not meet this target. The remaining participants either met or exceeded the target (Table 1). The mean  $C_{max}$  was  $2866 \pm 1889$  ng/mL and  $T_{max} = 2.1$  h. The mean AUC was  $20,291 \pm 15,203$  ng/mL·h. Kinetin was rapidly absorbed and then cleared according to first-order elimination kinetics (Fig. 1). Eight days after receiving kinetin, repeated plasma kinetin levels 2 h after dose administration were  $2994 \pm 3168$  ng/mL and did not show accumulation or slower metabolism.

**Effect on *IKBKAP* mRNA.** All patients with FD increased the amount of normal WT *IKBKAP* mRNA produced in white blood cells after taking kinetin. At baseline, the mean percentage exon inclusion (*i.e.* the percentage of correctly spliced *IKBKAP* mRNA) was  $54 \pm 10\%$ . This increased to  $57 \pm 10\%$  after receiving kinetin for 8 d and increased further to  $71 \pm 9\%$  after receiving kinetin for 28 d ( $p = 0.002$ , Fig. 2). There

## DISCUSSION



**Figure 2.** The percent of *IKBKAP* transcript produced that include exon 20 at baseline, after 8 d of receiving kinetin and after 28 d of receiving kinetin. Open squares show individual data. Subject number is to the left of the baseline values. Bar charts show mean  $\pm$  SEM;  $p = 0.002$ .

was no relationship between the kinetin dosages and peak concentration levels achieved or the effect on WT *IKBKAP* mRNA production.

**Tolerability.** Overall, kinetin was well tolerated with only minimal side effects reported over the 28-d period. Diarrhea occurred in two subjects. Mild to moderate nausea was reported in three participants. These side effects were anticipated because they were common complaints in all subjects before they began taking kinetin. Three subjects complained of headaches. The side effects were not severe enough to cause any of the subjects to drop out of the study over the 28 d.

**Safety.** Mild transitory changes in laboratory values were noted. Three patients with FD (no. 3, 6, and 8) had modest increases in liver enzymes. Subject no. 3 had the highest serum glutamic oxaloacetic transaminase and serum glutamic pyruvic transaminase values at 110 U/L and 169 U/L, respectively. Values in subjects 6 and 8 never exceeded 82 U/L for either transaminase, and bilirubin and alkaline phosphatase values remained normal for all three subjects. One subject (2) had a decrease in platelet count from his baseline 168,000/mL to 47,000/mL accompanied by a slight decrease in white blood count from baseline of 5300/mL to 3300/mL after 28 d of receiving kinetin but had no overt signs of viral illness. The possibility of a laboratory error could not be excluded. All laboratory changes were reversible and normalized after discontinuation of kinetin. Blood pressure and heart rate in supine and upright positions were unaffected by kinetin administration. There were no changes in weight or differences noted in the neurological examination during the 28-d period.

FD is caused by an intronic splice mutation in the *IKBKAP* gene that leads to partial skipping of exon 20 and tissue-specific reduction in IKAP/ELP-1 protein expression. Because kinetin has been shown to improve splicing and increase WT *IKBKAP* mRNA and IKAP protein expression in FD cell lines, we administered kinetin to eight FD individuals who are homozygous for the splice mutation and were able to demonstrate *in vivo* splicing changes.

To date, four substances have been identified that potentially increase total IKAP protein levels in FD cell lines, by either increasing total *IKBKAP* gene expression or modifying mRNA splicing and increasing WT *IKBKAP* mRNA production (9,15–17). These compounds have been postulated as therapeutic agents for patients with FD. Although *in vitro* administration of tocotrienols was reported to increase total *IKBKAP* gene expression (16), its effectiveness could not be replicated by other recent studies (11,17). Epigallocatechin gallate, like kinetin, reportedly modifies mRNA splicing (15), but its effectiveness in cell lines is modest when compared with kinetin (9,11). Most recently, phosphatidylserine was shown to also increase total *IKBKAP* expression, however, its effects on *IKAP* levels in patients with FD are still unknown. To date, kinetin is the first of these compounds to be subjected to an objective assessment in humans regarding pharmacokinetics, impact on mRNA splicing and safety.

Our results address several fundamental issues relevant to kinetin's possible role as a therapeutic agent for individuals affected with FD. First, we confirm that kinetin results in plasma levels equivalent to cell culture concentrations reported to affect *IKBKAP* splicing (9). Consistent with results from a previous study of oral administration of kinetin, kinetin elimination is almost complete by 12 h after ingestion (13).

Second, our data show that kinetin corrects the FD splicing defect in affected individuals and raises the level of normal *IKBKAP* mRNA *in vivo*. After 8 d of single daily dosing, normal splicing of *IKBKAP* had increased in six of eight subjects. Even more intriguing was the finding that the magnitude of splicing continued to improve without dosage change, because the levels of WT *IKBKAP* mRNA were greater in all subjects on d 28 than on d 8. It is possible that this is the result of a cumulative effect, similar to that seen in FD cell lines (10). Furthermore, the kinetin was relatively well tolerated and safe over this 28-d period. Given the severity of FD and the possibility that kinetin may alter the natural history of the disease, some tolerance for minor side effects might be warranted.

Our data clearly demonstrates that kinetin can modify splicing in peripheral leukocytes. We anticipate that *IKBKAP* mRNA expression may be similarly affected in neural tissues where mis-splicing is most profound causing the deficits characteristic to this disorder. Gene expression studies in HeLa cells after reduction of ELP-1 by RNAi has shown that a subset of Elongator target genes play a role in cell migration (6). This is consistent with previously described neuropathology in FD, such as arrested small fiber neuronal development resulting in variable degrees of disease severity (1). Because

of its small molecular size (215.21), kinetin crosses the blood brain barrier quickly (Sitek study No. 0849-M208; SITEK Research Laboratories, Rockville, MD, 2005). Therefore, we project that target levels of kinetin will be achieved in human neuronal tissue to improve splicing efficiency so that there is increased production of WT *IKBKAP* mRNA transcript and thus increased amounts of normal functioning IKAP. IKAP is an integral component of the human Elongator complex, a transcriptional regulator that impacts on a host of other target genes (6) some of which may be involved in maintenance of sensory and autonomic nervous systems. Thus by modifying activity of these target genes, the natural history of FD may be altered and relentless progression attenuated. Long-term clinical trials of kinetin are warranted.

**Acknowledgments.** We thank the staff of the General Clinical Research Center at Bellevue Hospital for their diligence in obtaining and preparing samples. We thank the participants and their families for their continued support.

## REFERENCES

1. Axelrod FB 2004 Familial dysautonomia. *Muscle Nerve* 29:352–363
2. Axelrod FB, Gold-von Simson G 2007 Hereditary sensory and autonomic neuropathies: types II, III, and IV. *Orphanet J Rare Dis* 2:39
3. Norcliffe-Kaufmann L, Axelrod F, Kaufmann H 2010 Afferent baroreflex failure in familial dysautonomia. *Neurology* 75:1904–1911
4. Axelrod FB, Goldberg JD, Ye XY, Maayan C 2002 Survival in familial dysautonomia: impact of early intervention. *J Pediatr* 141:518–523
5. Slaugenhaupt SA, Blumenfeld A, Gill SP, Leyne M, Mull J, Cuajungco MP, Liebert CB, Chadwick B, Idelson M, Reznik L, Robbins C, Makalowska I, Brownstein M, Krappmann D, Scheidereit C, Maayan C, Axelrod FB, Gusella JF 2001 Tissue-specific expression of a splicing mutation in the *IKBKAP* gene causes familial dysautonomia. *Am J Hum Genet* 68:598–605
6. Close P, Hawkes N, Cornez I, Creppe C, Lambert CA, Rogister B, Siebenlist U, Merville MP, Slaugenhaupt SA, Bours V, Svejstrup JQ, Chariot A 2006 Transcription impairment and cell migration defects in elongator-depleted cells: implication for familial dysautonomia. *Mol Cell* 22:521–531
7. Cuajungco MP, Leyne M, Mull J, Gill SP, Lu W, Zagzag D, Axelrod FB, Maayan C, Gusella JF, Slaugenhaupt SA 2003 Tissue-specific reduction in splicing efficiency of *IKBKAP* due to the major mutation associated with familial dysautonomia. *Am J Hum Genet* 72:749–758
8. Heemskerck J, Tobin AJ, Bain LJ 2002 Teaching old drugs new tricks. Meeting of the Neurodegeneration Drug Screening Consortium, 7–8 April 2002, Washington, DC, USA. *Trends Neurosci* 25:494–496
9. Slaugenhaupt SA, Mull J, Leyne M, Cuajungco MP, Gill SP, Hims MM, Quintero F, Axelrod FB, Gusella JF 2004 Rescue of a human mRNA splicing defect by the plant cytokinin kinetin. *Hum Mol Genet* 13:429–436
10. Hims MM, Ibrahim EC, Leyne M, Mull J, Liu L, Lazaro C, Shetty RS, Gill S, Gusella JF, Reed R, Slaugenhaupt SA 2007 Therapeutic potential and mechanism of kinetin as a treatment for the human splicing disease familial dysautonomia. *J Mol Med* 85:149–161
11. Lee G, Papapetrou EP, Kim H, Chambers SM, Tomishima MJ, Fasano CA, Ganat YM, Menon J, Shimizu F, Viale A, Tabar V, Sadelain M, Studer L 2009 Modelling pathogenesis and treatment of familial dysautonomia using patient-specific iPSCs. *Nature* 461:402–406
12. Boone N, Loriod B, Bergon A, Sbai O, Formisano-Tréziny C, Gabert J, Khrestchatsky M, Nguyen C, Féron F, Axelrod FB, Ibrahim el C 2010 Olfactory stem cells, a new cellular model for studying molecular mechanisms underlying familial dysautonomia. *PLoS One* 5:e15590
13. Gold-von Simson G, Goldberg JD, Rolnitzky LM, Mull J, Leyne M, Voustantiyouk A, Slaugenhaupt SA, Axelrod FB 2009 Kinetin in familial dysautonomia carriers: implications for a new therapeutic strategy targeting mRNA splicing. *Pediatr Res* 65:341–346
14. Gold-von Simson G, Leyne M, Mull J, Rolnitzky LM, Goldberg JD, Berlin D, Axelrod FB, Slaugenhaupt SA 2008 *IKBKAP* mRNA in peripheral blood leukocytes: a molecular marker of gene expression and splicing in familial dysautonomia. *Pediatr Res* 63:186–190
15. Anderson SL, Qiu J, Rubin BY 2003 EGCG corrects aberrant splicing of *IKAP* mRNA in cells from patients with familial dysautonomia. *Biochem Biophys Res Commun* 310:627–633
16. Anderson SL, Qiu J, Rubin BY 2003 Tocotrienols induce *IKBKAP* expression: a possible therapy for familial dysautonomia. *Biochem Biophys Res Commun* 306:303–309
17. Keren H, Donyo M, Zeevi D, Maayan C, Pupko T, Ast G 2010 Phosphatidylserine increases *IKBKAP* levels in familial dysautonomia cells. *PLoS ONE* 5:e15884