

Defining human dendritic cell progenitors by multiparametric flow cytometry

Gaëlle Breton¹, Jaeyop Lee², Kang Liu² & Michel C Nussenzweig^{1,3}

¹Laboratory of Molecular Immunology, The Rockefeller University, New York, New York, USA. ²Department of Microbiology and Immunology, Columbia University Medical Center, New York, New York, USA. ³Howard Hughes Medical Institute, Chevy Chase, Maryland, USA. Correspondence should be addressed to M.C.N. (nussen@rockefeller.edu).

Published online 20 August 2015; doi:10.1038/nprot.2015.092

Human dendritic cells (DCs) develop from progressively restricted bone marrow (BM) progenitors: these progenitor cells include granulocyte, monocyte and DC progenitor (GMDP) cells; monocyte and DC progenitor (MDP) cells; and common DC progenitor (CDP) and DC precursor (pre-DC) cells. These four DC progenitors can be defined on the basis of the expression of surface markers such as CD34 and hematopoietin receptors. In this protocol, we describe five multiparametric flow cytometry panels that can be used as a tool (i) to simultaneously detect or phenotype the four DC progenitors, (ii) to isolate DC progenitors to enable *in vitro* differentiation or (iii) to assess the *in vitro* differentiation and proliferation of DC progenitors. The entire procedure from isolation of cells to flow cytometry can be completed in 3–7 h. This protocol provides optimized antibody panels, as well as gating strategies, for immunostaining of BM and cord blood specimens to study human DC hematopoiesis in health, disease and vaccine settings.

INTRODUCTION

DCs are a heterogeneous population of immune cells that are essential mediators of immunity and tolerance^{1–3}. Although DCs share a common ability to process and present antigen to naive T cells for the initiation of an immune response, they are not all identical, and their unique abilities and phenotypes are current areas of investigation. DCs from humans, which are best defined in the blood, are identified with BDCA markers. BDCA-2(CD303)⁺ plasmacytoid DCs (pDCs) have the unique ability to rapidly produce abundant type I interferon (IFN) in response to viral infection⁴. BDCA-1(CD1c)⁺ conventional DCs (cDCs) have been proposed to excel in CD4⁺ T-cell priming^{5,6}. Finally, BDCA-3(CD141)^{hi} cDCs have the ability to capture dead cells and to cross-present exogenous antigen, offering a mechanism for priming CD8⁺ T cells specific for pathogens that do not directly infect DCs^{7–12}.

Whereas DC development has been studied extensively in mice¹³, the origin of human DCs and their relation to monocytes have been long debated. Our group has recently clarified the pathway for human DC hematopoiesis and shown its sequential origin from increasingly restricted but well-defined BM progenitors^{14,15} (Fig. 1). Human granulocyte, monocyte and DC lineages originate from a common progenitor, the GMDP. GMDPs develop into a more restricted human MDP. MDPs give rise to monocytes and a CDP, which loses the potential to produce monocytes and is restricted to produce the three major subsets of DCs. These committed DC progenitors reside in BM, as well as in cord blood (CB), but not in blood or lymphoid tissues¹⁴. Finally, CDPs give rise to pDCs, as well as to a circulating cDC precursor cell (pre-cDC). Indeed, pre-cDCs develop in the BM, travel through the blood and differentiate into the two subsets of cDCs in peripheral lymphoid organs. In studies of human volunteers injected with Fms-related tyrosine kinase 3 ligand (FLT3L), we showed that human pre-cDCs are mobilized into the blood similarly to the more differentiated DC subsets¹⁵. Now that the lineage-committed progenitors and immediate precursors for human DCs have been identified, studies to further define human DC

hematopoiesis in health, disease and vaccine settings are possible, as well as the exploration of their potential utility in cellular immunotherapies. This can be facilitated by the use of this protocol, in which we describe flow cytometry assays to isolate and characterize DC progenitors.

Development of the protocol

The study of human DC hematopoiesis has been hampered by the absence of validated markers to identify and track progenitors. Human hematopoietic stem and progenitor cells (HSPCs) are commonly defined by the expression of the cell surface protein CD34, as well as the non-expression of lineage antigens that are present on mature leukocytes. These Lin[−] (lineage) CD34⁺ HSPCs comprise only a small and variable fraction of human BM cells (2–4%), CB cells (~1%) and peripheral blood (PB; <0.2%). Human HSPCs have been further fractionated using common markers such as CD38, CD90, CD45RA, CD117 (stem cell

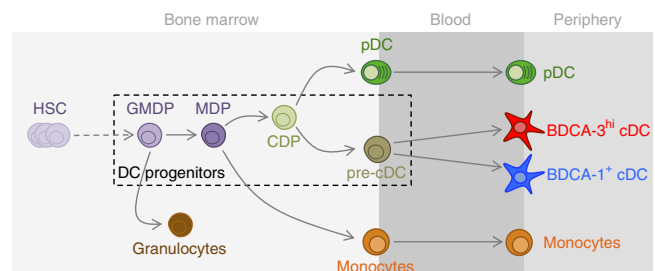


Figure 1 | Schematic view of human dendritic cell (DC) hematopoiesis. DC hematopoiesis is initiated in the bone marrow (BM). A granulocyte, monocyte and DC progenitor (GMDP) develops into a monocyte and DC progenitor (MDP). MDPs give rise to monocytes and a common DC progenitor (CDP), which loses the potential to produce monocytes. CDPs give rise to plasmacytoid DCs (pDCs), as well as a circulating cDC precursor (pre-cDC). Pre-cDCs migrate from the BM through the blood to the periphery to produce the two major subsets of conventional DCs (cDCs)—i.e., BDCA-1⁺ cDCs and BDCA-3^{hi} cDCs.



TABLE 1 | List of monoclonal antibodies used in this study.

Marker	Fluorochrome	Clone	Host species and isotype	Manufacturer	Cat. no.
BDCA-2 (CD303)	FITC	AC144	Mouse IgG1	Miltenyi	130-090-510
CD116	FITC	4H1	Mouse IgG1	BioLegend	305906
BDCA-3 (CD141)	PE	AD5-14H12	Mouse IgG1	Miltenyi	130-090-514
CD135	PE	4G8	Mouse IgG1	BD Biosciences	558996
CD45	PE Texas Red	HI30	Mouse IgG1	Life Technologies	MHCD4517
HLA-DR	PE Texas Red	TÜ36	Mouse IgG2b	Life Technologies	MHLDR17
CD45RA	PE Texas Red	MEM-56	Mouse IgG2b	Life Technologies	MHCD45RA17
CD3	PE Texas Red	S4.1	Mouse IgG2a	Life Technologies	MHCD0317
CD19	PE Texas Red	SJ25-C1	Mouse IgG1	Life Technologies	MHCD1917
CD14	PE Texas Red	TüK4	Mouse IgG2a	Life Technologies	MHCD1417
BDCA-2 (CD303)	PerCP-Cy5.5	201A	Mouse IgG2a	BioLegend	354210
CD66b	PerCP-Cy5.5	G10F5	Mouse IgM	BioLegend	305108
CD335	PerCP-Cy5.5	9E2	Mouse IgG1	BioLegend	331920
CD10	PerCP-Cy5.5	HI10a	Mouse IgG1	BioLegend	312216
CD335	PE-Cy7	9E2	Mouse IgG1	BD Biosciences	562101
BDCA-3	PE-Cy7	M80	Mouse IgG1	BioLegend	344110
HLA-DR	PE-Cy7	L243	Mouse IgG2a	BioLegend	307616
CD11c	PE-Cy7	3.9	Mouse IgG1	BioLegend	301608
CD33	PE-Cy7	WM53	Mouse IgG1	eBioscience	25-0338-42
CD38	PE-Cy7	HIT2	Mouse IgG1	BioLegend	303516
CD117	Brilliant Violet 421	104D2	Mouse IgG1	BioLegend	313216
BDCA-3 (CD141)	Brilliant Violet 421	M80	Mouse IgG1	BioLegend	344114
CD117	Brilliant Violet 510	104D2	Mouse IgG1	BioLegend	313220
CD123	Brilliant Violet 510	6H6	Mouse IgG1	BioLegend	306022
CD45	V500	HI30	Mouse IgG1	BD Biosciences	560777
CD10	Brilliant Violet 605	HI10a	Mouse IgG1	BioLegend	312222
CD20	Brilliant Violet 605	2H7	Mouse IgG2b	BioLegend	302333
CD123	Brilliant Violet 650	6H6	Mouse IgG1	BioLegend	306019
CD45RA	Qdot 655	MEM-56	Mouse IgG2b	Invitrogen	Q10069
CD14	Qdot 800	TüK4	Mouse IgG2a	Invitrogen	Q10064
BDCA-2	APC	AC144	Mouse IgG1	Miltenyi	130-090-905
CD115	APC	9-4D2-1E4	Rat IgG1	BioLegend	347306
Clec9A	Alexa Fluor 700	683409	Mouse IgG1	R&D Systems	FAB6049N
CD34	Alexa Fluor 700	581	Mouse IgG1	BioLegend	343526
BDCA-1 (CD1c)	APC-Cy7	L161	Mouse IgG1	BioLegend	331520
CD3	BUV395	UCHT1	Mouse IgG1	BD Biosciences	563546
CD19	BUV395	SJ25-C1	Mouse IgG1	BD Biosciences	563549



TABLE 2 | Antibody panels for human dendritic cell progenitors.

Panel	Panel #1, 15 color (identification)	Panel #2, 15 color (characterization)	Panel #3, 11 color (isolation)	Panel #4, 13 color (culture output)	Panel #5, 14 color (culture proliferation)
FITC	CD116	CD116	CD116	BDCA-2	CFSE
PerCP Cy5.5	CD66b/CD335/BDCA-2	CD66b/CD335/BDCA-2	CD66b/CD335/BDCA-2/CD10	CD66b	CD66b
PE	CD135	CD135	CD135	BDCA-3	BDCA-3
PE Texas Red	CD45	CD45RA	CD3/CD19/CD14	HLA-DR	HLA-DR
PE-Cy7	BDCA-3	(antibody of choice)	BDCA-3	CD335	CD335
APC	CD115	CD115	CD115	—	BDCA-2
Alexa Fluor 700	CD34	CD34	CD34	Clec9A	Clec9A
APC-Cy7	BDCA-1	BDCA-1	BDCA-1	BDCA-1	BDCA-1
BV421	CD117	BDCA-3	CD117	—	—
V500, BV510	CD123	CD117	CD123	CD45	CD45
BV605	CD10	CD10	—	CD20	CD20
Qdot 655, BV650	CD45RA	CD123	CD45RA	CD123	CD123
Qdot 800	CD14	CD14	—	CD14	CD14
Live/Dead	Live/Dead blue	Live/Dead blue	—	Live/Dead blue	Live/Dead blue
BUV395	CD3/CD19	CD3/CD19	—	CD3	CD3

factor (SCF) receptor) and CD135 (FLT3 receptor)^{16–19}. However, the combination of these markers does not separate DC lineage-committed progenitors from multipotential progenitors. Moreover, it has been reported that a small fraction of cells that lack the expression of CD34 have progenitor potential²⁰. These Lin[−] CD34[−] cells probably represent precursor cells that have lost CD34 expression but that are still too immature to express lineage markers. Therefore, CD34, as well as the aforementioned markers, are not enough to further separate HSPCs, and additional markers are required to identify and isolate DC lineage-committed progenitors.

As hematopoiesis relies on instructive cues from the BM niche such as hematopoietins, we hypothesized that the lineage potential of a progenitor might be determined by the set of growth factor receptors that it expresses. We showed that multipotential progenitors such as myeloid and lymphoid progenitors were heterogeneous, and they could be further fractionated using antibodies against receptors for granulocyte-macrophage colony-stimulating factor (GM-CSFR; CD116), macrophage colony-stimulating factor (M-CSFR; CD115) and interleukin-3 (IL-3R; CD123) (refs. 14,15). By using two slightly different antibody panels, we identified the following: (i) the human DC lineage-committed GMDP, MDP and CDP in the Lin[−] CD34⁺ fraction by combining antibodies against CD45RA, CD116, CD115 and CD123, as well as CD38 (ref. 14), and (ii) the human pre-cDC, which was found in the Lin[−] CD34[−] fraction and identified on the basis of the expression or lack of CD45RA, CD116, CD115 and CD123, as well as CD135 and CD117 (ref. 15). These progenitors are rare, which presents a challenge for the isolation of these cells.

When working with scarce cells, the simultaneous analysis of all four DC progenitors seems to be essential in order to provide a comprehensive view of DC hematopoiesis.

The proven multicolor panels presented in this protocol are based on our original studies^{14,15} with modifications enabling simultaneous assessment of all DC lineage-committed progenitors. As the common feature of progenitors that are capable of developing into DCs is surface expression of CD117 and CD135, the panel to define them includes the following: (i) antibodies specific to CD117 and CD135, as well as CD34, CD123, CD115, CD116 and CD45RA; (ii) antibodies specific to CD3 (T cell), CD19 (B cell), CD14 (monocytes), CD335 (natural killer (NK) cell), CD66b (granulocytes) and CD10 (lymphoid progenitors) to exclude specific lineages (Lin[−]); (iii) antibodies specific to BDCA-1, BDCA-2 and BDCA-3 to exclude differentiated DCs (BDCA[−]); (iv) a viability dye to exclude dead cells; and (v) an optional antibody specific to CD45 to visualize hematopoietic cells in nonhematopoietic tissues or *in vitro* cultures. All antibodies (Table 1) and fluorochrome combinations (Table 2) are commercially available, and experiments can be run on commonly available flow cytometers and flow sorters that are capable of multicolor analysis (see configurations in Tables 3 and 4).

Defining human DC progenitors also required that we develop an efficient culture assay to study the ability of the progenitors to proliferate and differentiate in response to hematopoietic growth factors. Through systematic testing of different combinations of cytokines, as well as the use of mouse stromal cell lines, we showed that the *in vitro* differentiation of CD34⁺ HSPCs on MS-5 stromal cells in addition to FLT3L, SCF and GM-CSF cytokines (referred

TABLE 3 | Configuration of LSR II.

Detector	Long-pass filter	Band-pass filter	Fluorochrome
Blue laser (488 nm)			
A	685LP	695/40	PerCP-Cy5.5
B	505LP	530/30	FITC, CFSE
C	—	488/10	SSC
Yellow/green laser (561 nm)			
A	750LP	780/60	PE-Cy7
D	600LP	610/20	PE Texas Red
E	—	582/15	PE
Red laser (633 nm)			
A	735LP	780/60	APC-Cy7
B	690LP	710/50	Alexa Fluor 700
C	—	660/20	APC
Violet laser (405 nm)			
A	635LP	655/20	Qdot 655, BV650
B	595LP	605/20	BV605
C	505LP	525/50	V500, BV510
D	—	450/50	BV421
UV laser (355 nm)			
A	735LP	780/60	Qdot 800
B	410LP	450/50	Live/Dead blue
C	—	379/28	BUV395

TABLE 4 | Configuration of ARIA III.

Detector	Long-pass filter	Band-pass filter	Fluorochrome
Blue laser (488 nm)			
A	655LP	695/40	PerCP-Cy5.5
B	502LP	530/30	FITC
C	—	488/10	SSC
Yellow/green laser (561 nm)			
A	735LP	780/60	PE-Cy7
D	600LP	610/20	PE Texas Red
E	—	582/15	PE
Red laser (640 nm)			
A	735LP	780/60	APC-Cy7
B	690LP	730/45	Alexa Fluor 700
C	—	660/20	APC
Violet laser (407 nm)			
A	600LP	660/20	Qdot 655
B	502LP	510/50	BV510
C	—	450/40	BV421

affect the composition of the progenitor compartment, CB cells can also be examined. As CB can be collected quite easily and cryopreserved, it is a good source of human progenitors. When these populations are purified and cultured in MS5+FSG, CB progenitors showed a differentiation potential similar to that exhibited by their BM counterparts^{14,15}.

Identification and characterization of DC progenitors. As described, human DC progenitors can be identified by the lack of lineage and BDCA markers and by combining CD123, CD34, CD115, CD116, CD45RA, CD117 and CD135 markers (Table 2; panel #1). As shown in Figure 2b for BM and Figure 2c for CB, the following cells can be distinguished:

- Cells with the phenotype Lin⁻BDCA⁻CD123^{-/lo}CD34⁺CD117⁺CD135⁺CD116⁻CD115⁻CD45RA⁺ correspond to the GMDPs with the ability to generate granulocytes, monocytes and DCs.
- Cells with the phenotype Lin⁻BDCA⁻CD123^{-/lo}CD34⁺CD117⁺CD135⁺CD116⁻CD115⁺CD45RA⁺ represent the MDPs, which have the potential to give rise to monocytes and DCs but not to granulocytes.
- Cells with the phenotype Lin⁻BDCA⁻CD123^{hi}CD34⁺CD117⁺CD135⁺CD116⁺CD115⁻CD45RA⁺ correspond to the CDPs with the capacity to give rise to all DCs but not to monocytes and granulocytes.
- Pre-cDCs have the phenotype Lin⁻BDCA⁻CD123^{-/lo}CD34⁻CD117⁺CD135⁺CD116⁺CD115⁻CD45RA⁺ and are restricted to the two subsets of cDCs.

to as MS5+FSG herein) support the development of multiple lineages, including all three major human DC subsets. The resulting DC subsets resemble their blood counterparts both in gene expression and function¹⁴.

Experimental design

In this protocol, we give a flow cytometry-based workflow for (i) simultaneous detection of DC progenitors (Table 2, panel #1 and Fig. 2), as well as their characterization (Table 2, panel #2 and Fig. 3); (ii) isolation of DC progenitors to enable *in vitro* differentiation (Table 2, panel #3 and Fig. 4); and (iii) evaluation of DC progenitor *in vitro* differentiation (Table 2, panel #4 and Fig. 5) and proliferation (Table 2, panel #5 and Fig. 6). The procedure also covers various preparatory steps— isolation, freezing and thawing of mononuclear cells (MNCs) and hematopoietic differentiation on stromal cells.

Source tissue. The procedure can be performed on BM or CB samples. BM samples are typically obtained from elderly human donors; however, as age-related developmental changes may



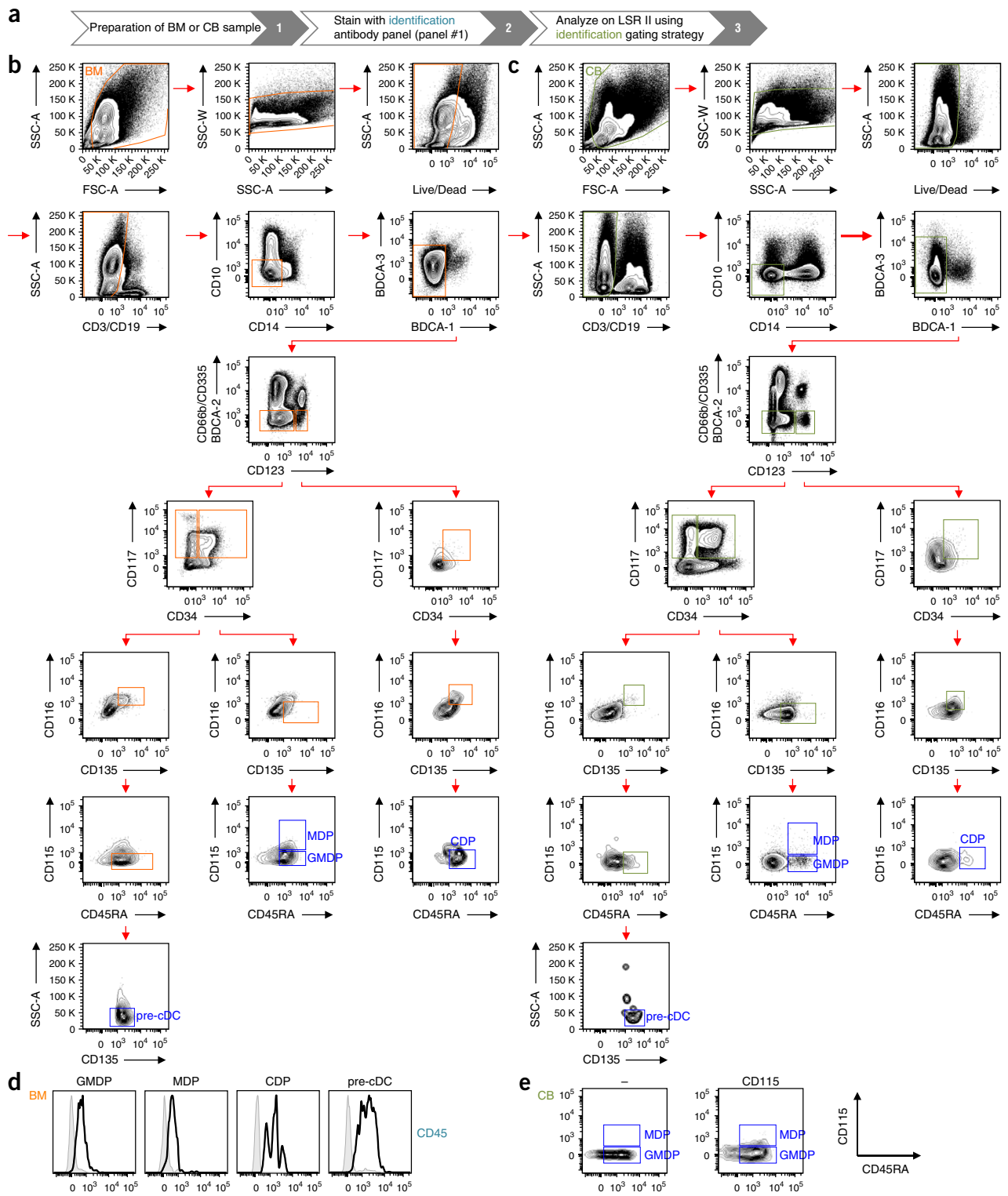


Figure 2 | Gating strategy for the identification of human DC progenitors. **(a)** Workflow for the identification of DC progenitors. **(b,c)** Human BM **(b)** and CB **(c)** MNCs were stained as indicated in **Table 2** (panel #1). Progenitors are identified by first gating on live cells (FSC-A versus SSC-A), and then on singlets (SSC-A versus SSC-W) and live cells (Live/Dead blue versus SSC-A). Lin⁻BDCA⁻ cells are obtained by successively gating out CD3⁺, CD19⁺ cells (CD3, CD19 versus SSC-A), CD14⁺, CD10⁺ cells (CD14 versus CD10), BDCA-1⁺, BDCA-3^{hi} cells (BDCA-1 versus BDCA-3) and CD66b⁺, CD335⁺, BDCA-2⁺ cells (CD66b, CD335, BDCA-2 versus CD123). Lin⁻BDCA⁻CD123^{-/lo} and Lin⁻BDCA⁻CD123^{hi} populations are further subgated on the basis of the expression of CD34 versus CD117, CD135 versus CD116 and CD45RA versus CD115. In these gated populations, GMDPs are CD123^{-/lo}CD34⁺CD117⁺CD135⁺CD116⁻CD115⁻CD45RA⁺; MDPs are CD123^{-/lo}CD34⁺CD117⁺CD135⁺CD116⁺CD115⁺CD45RA⁺; CDPs are CD123^{hi}CD34⁺CD117⁺CD135⁺CD116⁺CD115⁻CD45RA⁺; and pre-cDCs are CD123^{-/lo}CD34⁻CD117⁺CD135⁺CD116⁺CD115⁻CD45RA⁺SSC-A^{lo}. FSC, forward scatter; SSC, side scatter. **(d)** Expression of CD45 by GMDPs, MDPs, CDPs and pre-cDCs from human BM. Histograms show the expression of stained (black line) and unstained (gray line) cells. **(e)** FMO control for CD115 staining used to discriminate between GMPs and MDPs in CB.



PROTOCOL

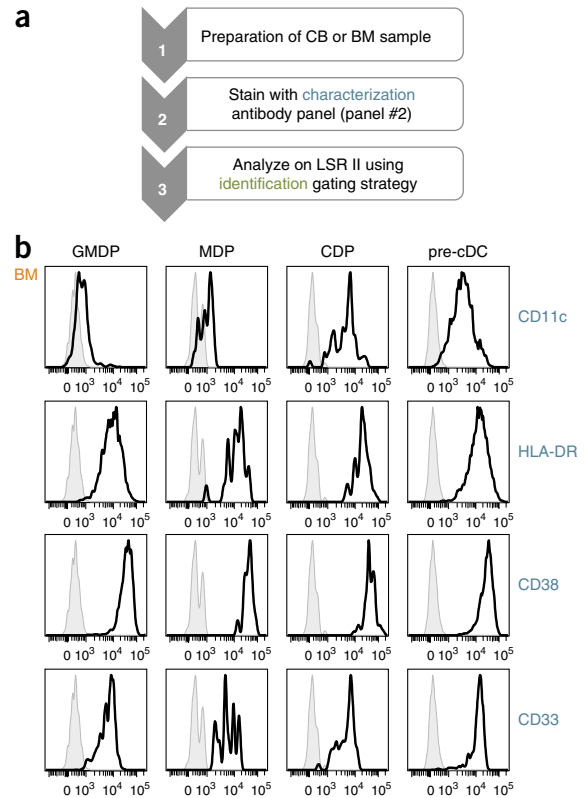
Figure 3 | Characterization of human DC progenitors. **(a)** Workflow for the characterization of DC progenitors. **(b)** Expression of CD11c, HLA-DR, CD38 and CD33 by GMDPs, MDPs, CDPs and pre-cDCs from human BM. DC progenitors are defined as in **Figure 2b**. Histograms show expression (x axis) and number of cells (y axis) of stained (black line) and unstained (gray line) cells.

Of note, we do not include isotype controls in our immunostaining, as the use of fluorescent isotype controls is not completely accurate, and because we have ascertained that the monoclonal antibodies are specific by carefully titrating them and using fluorescence minus one (FMO) controls for gating.

In nonhematopoietic tissues, we recommend using CD45 to visualize hematopoietic progenitors, as it may be challenging to identify these rare cells among other cells such as autofluorescent macrophages. As shown in **Figure 2d**, most, if not all, DC progenitors express CD45. Therefore, one channel in antibody panel #1 remains open to the potential use of CD45.

As DC progenitors are rare cells in both BM and CB, their identification is a matter of carefully defining the gates separating positive and negative cells. As shown in **Figure 2b,c**, the first step in the identification of human DC progenitors consists of excluding dead cells and debris by scatter gating. Live cells are then gated for singlets (side scatter(SSC)-W versus SSC-A; W = width, A = area), and dying cells are excluded on the basis of the uptake of the Live/Dead blue stain. The next step consists in the sequential exclusion of all lineage (CD3, CD19, CD14, CD66b, CD335 and CD10)- and BDCA (BDCA-1, BDCA-2 and BDCA-3)-expressing cells. To have a better resolution in our gates, we avoid as much as possible the use of a ‘dump’ channel containing all antibodies marking all excluded populations. Nonetheless, if the use of a ‘dump’ channel is considered to accommodate an additional antibody of interest (as done in **Table 2**, panel #3), one should carefully titrate each antibody separately before combining them to avoid any compensation issues and difficulties in discriminating between negative cells and cells with low expression. The use of CD123 allows clear separation of cells that express a high level of CD123 (CD123^{hi}) from cells that express no or a low level of CD123 (CD123^{lo} cells). CDPs are found within the CD123^{hi} cells by sequentially gating on CD135⁺, CD116⁺, CD45RA⁺ and CD115⁻ cells. The CD123^{lo} gate is further analyzed by gating on CD34⁺ CD117⁺ (CD34⁺) cells or CD34⁻ CD117⁺ (CD34⁻) cells. Pre-cDCs are found in the CD34⁻ gate. Indeed, we first gate on cells that express CD135, CD116 and CD45RA but do not express CD115, and then exclude SSC-A-high cells, as these cells contain some monocyte precursors¹⁵. In contrast, the CD34⁺ population contains both GMDPs and MDPs. These progenitors are all CD135⁺, CD116⁻ and CD45RA⁺; expression of CD115 allows the separation of GMDPs (CD115⁻ cells) from MDPs (CD115⁺ cells). Even though the CD115 staining is very faint and it is not possible to get a clear-cut separation of positive and negative cells, the use of FMO control allows for proper gating on CD115⁺ cells (**Fig. 2e**). Moreover, if we consider that lineage commitment occurs when the capacity to give rise to one cell type, e.g., monocyte and DC, is increased and the capacity to produce another cell type, e.g., granulocyte, is lost, dim CD115 expression is sufficient to separate cells with GMDP potential from cells with MDP potential.

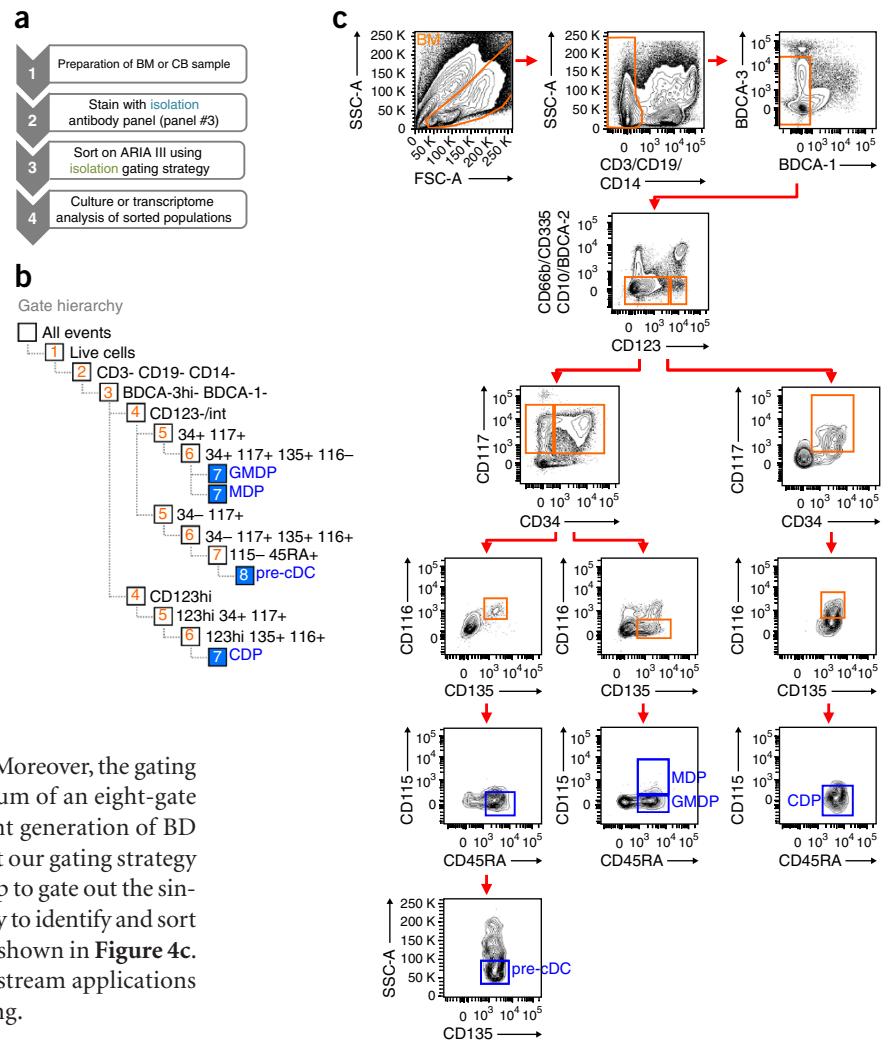
To characterize DC progenitors, we use a related combination of antibodies (**Table 2**, panel #2). Panel #2 leaves a channel open to accommodate an additional antibody of interest. We prefer the



phycoerythrin (PE) channel for this purpose, as PE is bright, and most if not all antibodies are available in this color. Because CD135 staining is crucial in order to identify DC progenitors and because only CD135 PE works well in our hands, we decided to open the PE-Cy7 channel. PE-Cy7 is a tandem dye that can degrade in the presence of light and heat, and it will then emit in the parent dye channel (PE). However, by avoiding the exposure of samples to light and heat, this problem can be largely avoided. The gating procedure is the same as that previously described (**Fig. 2b,c**), and the expression of CD11c, HLA-DR, CD38 and CD33 on DC progenitors is shown (**Fig. 3b**). HLA-DR, whose expression is neither specific nor identical within the DC subsets, is also expressed by DC progenitors. CD11c, which is weakly expressed on cDCs and completely lacking on pDCs, is upregulated during DC development. CD38, which was initially used to identify multipotential progenitors¹⁶, as well as DC lineage-committed progenitors¹⁴, is also expressed by pre-cDCs. Because CD38 is expressed by all hematopoietic progenitors, we decided not to use it in our antibody panels and focus more on hematopoietin receptors that allow further separation of these cells. CD33, which is highly specific to the hematopoietic compartment, is expressed by all DC progenitors.

Isolation of progenitors. We developed our flow cytometry strategy to identify DC progenitors on a 16-color flow cytometer (BD LSR II with blue, yellow/green, red, violet and UV lasers; see configuration in **Table 3**). To isolate DC progenitors, we adapted our panel to maximize the capacities of an 11-color cell sorter (BD Aria III with blue, yellow/green, red and violet lasers; see configuration in **Table 4**). This was done in part by restricting the number of channels used for lineage markers and by omitting the Live/Dead blue stain to exclude dead cells, relying only on

Figure 4 | Gating strategy for the isolation of human DC progenitors. **(a)** Workflow for the isolation of DC progenitors. **(b)** Gate hierarchy for sorting. **(c)** Human BM MNCs were stained as indicated in **Table 2** (panel #3). Progenitors are identified by first gating on live cells (FSC-A versus SSC-A). Lin⁻ BDCA⁻ cells are obtained by successively gating out CD3⁺, CD19⁺, CD14⁺ cells (CD3, CD19 and CD14 versus SSC-A), BDCA-1⁺, BDCA-3^{hi} cells (BDCA-1 versus BDCA-3) and CD66b⁺, CD335⁺, CD10⁺, BDCA-2⁺ cells (CD66b, CD335, CD10, BDCA-2 versus CD123). Lin⁻BDCA-CD123^{hi} and Lin⁻BDCA-CD123^{hi} populations are further subgated on the basis of the expression of CD34 versus CD117, CD135 versus CD116 and CD45RA versus CD115. In these gated populations, GMDPs are CD123^{-/lo} CD34⁺CD117⁺CD135⁺CD116⁻CD115⁻CD45RA⁺; MDPs are CD123^{-/lo}CD34⁺CD117⁺CD135⁺CD116⁻CD115⁻CD45RA⁺; CDPs are CD123^{hi}CD34⁺CD117⁺CD135⁺CD116⁻CD115⁻CD45RA⁺; and pre-cDCs are CD123^{-/lo}CD34⁻CD117⁺CD135⁺CD116⁻CD115⁻CD45RA⁺SSC-A^{lo}. FSC, forward scatter; SSC, side scatter.



exclusion by scatter gating (**Table 2**, panel #3). Moreover, the gating hierarchy while sorting is limited to a maximum of an eight-gate sort depth. This limit is intrinsic to the current generation of BD Aria III sorter hardware and firmware. To limit our gating strategy to eight steps (**Fig. 4b**), we also removed the step to gate out the singlets (SSC-W versus SSC-A). The gating strategy to identify and sort all DC-defined progenitors simultaneously is shown in **Figure 4c**. The sorted cells are suitable for various downstream applications such as cell culture or gene expression profiling.

Composition and proliferative capacity of *in vitro*-differentiated cells. Hematopoietic differentiation can be induced *in vitro* by coculture of hematopoietic progenitors on mouse BM stromal cells plus cytokines. To assess the differentiation potential of different hematopoietic progenitors and their multilineage or restricted potential, we developed an additional antibody panel (**Table 2**, panel #4). BM CD34⁺ HSPCs cultured in MS5+FSG for 7 d can produce T cells (CD3⁺), B cells (CD20⁺), NK cells (CD335⁺), granulocytes (CD66b⁺), monocytes (CD14⁺) and all three major subsets of DCs, that is, pDCs and both subsets of cDCs (**Fig. 5b**). Human CD45 antibody must be included in this panel, as it discriminates between human cells and mouse stromal cells, which are not entirely gated out by scatter analysis. Of note, BDCA markers are often used to classify human DCs. However, they are not strictly restricted to DCs; we therefore used them in combination with Clec9A for BDCA-3^{hi} cDCs, CD14 for BDCA-1⁺ cDCs and CD123 for BDCA-2⁺ pDCs.

To examine the proliferative potential of DC progenitors, we purified them from CB and stained them with carboxyfluorescein diacetate succinimidyl ester (CFSE) before culturing in MS5+FSG. By using a 14-color antibody panel (**Table 2**, panel #5) that includes CFSE, we were able to track the cells that were expanding in culture by CFSE dilution. As shown in **Figure 6b,c**, all progenitors are expanding in culture, even though DC lineage-committed progenitors—GMDP, MDP and CDP cells—have a

greater proliferative capacity than DC immediate precursors, i.e., pre-cDCs. Moreover, BDCA-1⁺ and BDCA-3^{hi} cDCs differentiate as early as 12 h from CDP and pre-cDC progenitors.

Applications of the protocol

We believe that the protocol described here has multiple applications and a wide interdisciplinary scope including (i) further definition of human DC hematopoiesis in health, disease and vaccine settings, as well as (ii) evaluating DC progenitors' applications in therapeutic approaches.

Our protocol can be used as an initial tool to analyze normal or abnormal immunophenotypic changes during DC development in humans. For instance, it can facilitate the study of diseases involving aberrant DC hematopoiesis such as chronic myelogenous leukemia (CML)²¹ or a newly identified form of primary immunodeficiency characterized by recurrent infections and disseminated bacille Calmette-Guérin (BCG) infection after vaccination in patients lacking GATA2 (ref. 22) and interferon regulatory factor 8 (IRF8)²³. Because of their capacity to elicit and regulate immune responses, DCs are essential to any effort for vaccine development. Therefore, our protocol provides important tools to design and monitor and potentially improve vaccines that rely on DCs.

Finally, the methods described above can support the exploration of new cellular therapeutic approaches based on

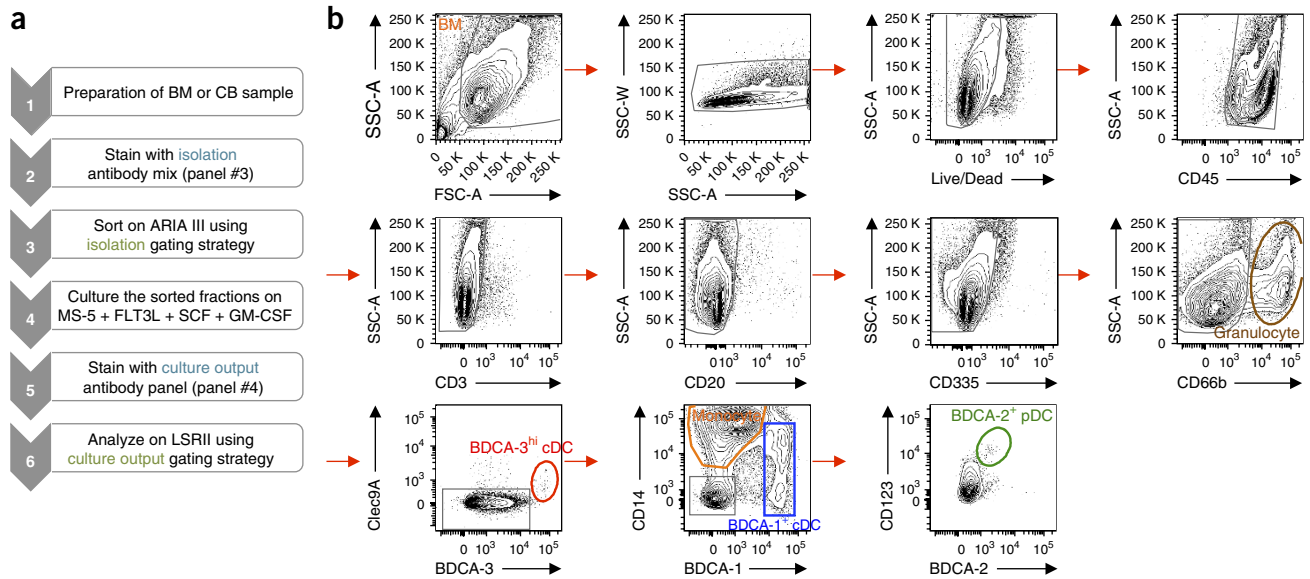


Figure 5 | Gating strategy for culture output after hematopoietic differentiation on MS-5 stromal cells of human DC progenitors. **(a)** Workflow for isolation of DC progenitors. **(b)** CD34⁺ HSPCs from BM were isolated as in **Figure 3c**, and then cultured in MS5+FSG for 7 d. Culture output was assessed by flow cytometry using antibody panel #4, as indicated in **Table 2**. Cells developing in culture are identified by first gating on live cells (FSC-A versus SSC-A), and then on singlets (SSC-A versus SSC-W) and live cells (Live/Dead blue versus SSC-A). CD45⁺Lin⁻ cells are obtained by successively gating on CD45⁺ cells (CD45 versus SSC-A) and gating out CD3⁺ cells (CD3 versus SSC-A), CD19⁺ cells (CD19 versus SSC-A) and CD335⁺ cells (CD335 versus SSC-A). Flow cytometry plots show phenotype of output cells, including granulocytes (brown), BDCA-3^{hi} cDCs (red), BDCA-1⁺ cDCs (blue), monocytes (orange) and BDCA-2⁺ pDCs (green).

DC progenitors including stem cell therapies focused on embryonic stem cells and induced pluripotent stem cells. The composition and the properties of the cells that are produced after *in vitro* differentiation of progenitors will differ considerably depending on the culture condition, and therefore this system can be used to evaluate DC progenitors to identify novel regulators of DC hematopoiesis or to test the toxicity of new

drug candidates. Of note, therapeutic approaches based on human DC progenitors may require the development of a nonxenogeneic culture system; therefore, it would be good to explore the feasibility of expanding DC progenitors in an entirely human coculture system using either umbilical vein endothelial cells for CB progenitors or BM stromal cells for BM progenitors.

MATERIALS

REAGENTS

Cell samples

• Human samples can be obtained from national blood centers for CB and from local hospitals for BM **! CAUTION** Universal precautions must be taken while manipulating human specimens, and all experiments must be carried out in at least class II biological safety cabinets and using appropriate protection equipment. **! CAUTION** Parental informed consent (CB) or patient informed consent (BM) must be obtained before collection, and protocols must conform to your Institutional Review Board (IRB)'s guidelines. IRB-approved protocols usually require that the samples be anonymous and fully deidentified at the site of collection by hospital personnel.

Cell culture

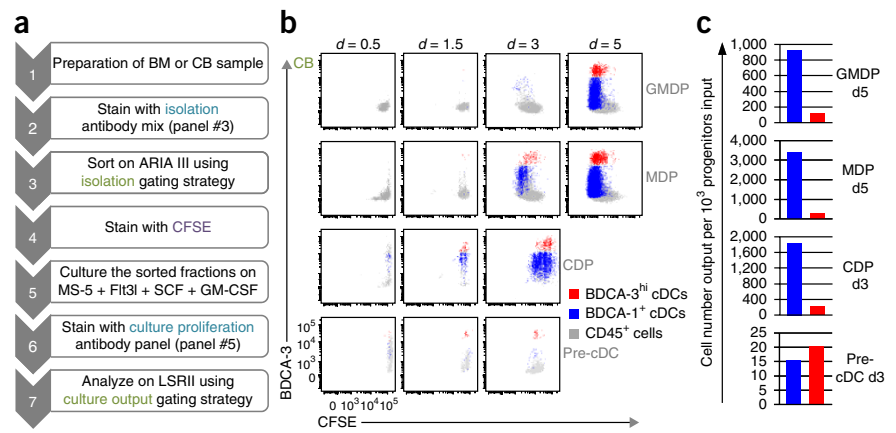
- Dulbecco's PBS 1× (DPBS; Life Technologies, cat. no. 14190)
- RPMI-1640 (Life Technologies, cat. no. 21870-076)
- α-MEM 1× (Life Technologies, cat. no. 12561-056)
- FBS, heat inactivated (Life Technologies, cat. no. 16140-071)
- ▲ **CRITICAL** We recommend testing several lots of serum for culture optimization and then using the same lot for an entire series of experiments. In our case, we always test three or four lots for hematopoietic differentiation on MS-5 stromal cells and select the one that supports the development of CD34⁺ HSPCs with an overall better yield for DCs.
- Antibiotic-antimycotic solution (Cellgro, cat. no. 30-004-CI)
- Collagenase type IV (Sigma-Aldrich, cat. no. C-5138)
- Ficoll-Paque plus (GE Healthcare, cat. no. 17-1440-03)
- Trypsin-EDTA, 0.05% (Life Technologies, cat. no. 25300-054)

- EDTA, 0.5 M (Life Technologies, cat. no. 15575)
- ACK lysing buffer (Life Technologies, cat. no. A10492)
- Mitomycin C (Sigma-Aldrich, cat. no. M4287) **! CAUTION** Avoid contact and inhalation. Wear gloves, safety glasses and a lab coat.
- DMSO (Sigma-Aldrich, cat. no. 154938)
- Trypan blue stain 0.4% (wt/vol) (Life Technologies, cat. no. 15250-061)
- Carboxy-fluorescein diacetate succinimidyl ester (CFSE; Life Technologies, cat. no. C1165)
- Recombinant human SCF ligand (SCF; R&D systems, cat. no. 255-SC-050/CF)
- Human FLT3 ligand (FLT3L; Celldex Therapeutics, special order)
- Leukine (sargramostim) as a human GM-CSF (Genzyme)
- ▲ **CRITICAL** Leukine is a prescription drug that must be ordered through a pharmacy.
- Human serum albumin (HSA; Sigma-Aldrich, cat. no. A9511)
- MS-5 mouse bone marrow stromal cell line (Creative Bioarray, cat. no. CSC-C2763) **! CAUTION** The cell lines used in your research should be regularly checked to ensure that they are authentic and that they are not infected with mycoplasma.
- Benzonase nuclease, 10 kU, 25 U/μl (Novagen, cat. no. 70664-3)
- Heparin, cell culture grade (Sigma-Aldrich, cat. no. H3149)
- Bleach **! CAUTION** Bleach is an irritant. Avoid contact with eyes, skin and clothing.

Plasticware

- 50-ml conical tubes (BD Falcon, cat. no. 352098)
- 15-ml conical tubes (BD Falcon, cat. no. 352097)
- 5-ml polypropylene round-bottom tube (BD Falcon, cat. no. 352063)

Figure 6 | Proliferative capacity of human DC progenitors after hematopoietic differentiation on MS-5 stromal cells. **(a)** Workflow for culture proliferation of DC progenitors. **(b)** GMDPs, MDPs, CDPs and pre-cDCs were purified from CB, as shown in **Figure 3c**, labeled with CFSE, and cultured in MS5+FSG for 0.5, 1.5, 3 and 5 d; proliferation was assessed by flow cytometry using antibody panel #5, as indicated in **Table 2**. Flow cytometry plots show gated culture-derived cells, as defined in **Figure 5b**: CD45⁺ cells (gray), BDCA-1⁺ cDCs (blue) and BDCA-3^{hi} cDCs (red). **(c)** Graphs showing the output of BDCA-1⁺ cDCs (blue) and BDCA-3^{hi} cDCs (red) for 10³ GMDPs (5 d), MDPs (5 d), CDPs (3 d) and pre-cDCs (3 d) cultured in MS5+FSG, as illustrated in **Figure 6b**.



- 5-ml polystyrene round-bottom tube (BD Falcon, cat. no. 352052)
- 5-ml polystyrene round-bottom tube with cell-strainer cap (BD Falcon, cat. no. 352235)
- 25-ml serological pipette (Costar, cat. no. 4489)
- 10-ml serological pipette (Costar, cat. no. 4488)
- 5-ml serological pipette (Costar, cat. no. 4487)
- Transfer pipette (Sarstedt, cat. no. 86.1171.001)
- Microcentrifuge tubes (1.5 ml; Eppendorf, cat. no. 022363204)
- Cryogenic screw-cap micro tubes (2-ml; Sarstedt, cat. no. 72.694.006)
- Micro tubes with screw caps, conical bottom (1.5-ml; RPI Corp, cat. no. 144500)
- Titer tube micro test tubes (Bio-Rad, cat. no. 223-9391)
- 96-well micro-well plates V-bottom without lid (Nunc, cat. no. 249570)
- 96-well micro-well plates lid (Nunc, cat. no. 263339)
- 96-well tissue culture plates flat-bottom (BD Falcon, cat. no. 357072)
- 10-cm tissue culture dishes (BD Falcon, cat. no. 353003)
- 15-cm tissue culture dishes (BD Falcon, cat. no. 353025)
- 150-cm² tissue culture flasks straight neck with vented cap (BD Falcon, cat. no. 355001)
- 10-ml syringe (BD Falcon, cat. no. 309604)
- Syringe filter with a 0.2- μ m membrane (Pall, cat. no. 4612)
- Cell strainer, 100 μ m (BD Falcon, cat. no. 352360)
- Cell strainer, 70 μ m (BD Falcon, cat. no. 352350)
- Precision specimen container, 4 ounce, positive seal indicator (Covidien, cat. no. 2200SA)

Flow cytometry reagents

- Antibodies (**Table 1**) ▲ **CRITICAL** Each antibody must be titrated before use (see Reagent Setup) ! **CAUTION** All antibodies must be kept at 4 °C and protected from exposure to direct light.
- Live/Dead fixable blue dead cell stain kit for UV excitation (Life Technologies, cat. no. L23105) ! **CAUTION** Keep it at -20 °C and protect it from exposure to direct light.
- Formaldehyde solution 37% (wt/vol) H₂O (Sigma-Aldrich, cat. no. 252549) ! **CAUTION** Formaldehyde is toxic by inhalation or if swallowed; it is irritating to the skin, eyes and respiratory system, and it may be carcinogenic. Formaldehyde should be used with appropriate safety measures, such as protective gloves, glasses, clothing and sufficient ventilation. All waste should be handled according to hazardous waste regulations.
- BD CompBeads set anti-mouse Ig κ (BD Biosciences, cat. no. 552843)
- BD CompBeads set anti-rat Ig κ (BD Biosciences, cat. no. 552844)
- Amine-reactive compensation bead kit (Life Technologies, cat. no. A10346)

EQUIPMENT

- Biological safety level 2 (BSL-2) tissue culture facilities
- BSL-2 sorting facilities
- Class II biological safety cabinet (The Baker Company, cat. no. SG403)
- Cell incubator (37 °C, 5% CO₂; Nuair, cat. no. NU-5500)
- Tabletop centrifuge with rotors and adapters for 50- and 15-ml conical tubes and 96-well plates (Sorvall, cat. no. 75-004-367)
- Microcentrifuge (Eppendorf, cat. no. 5424)
- Inverted microscope (Nikon, cat. no. Eclipse TS100)
- Hemocytometer (Fisher Scientific, cat. no. 02-671-5) or other cell counter

- Cryo 1 °C freezing container (Nalgene, cat. no. 5100-0001)
- LN2 storage systems (Thermo Scientific, cat. no. 7404)
- BD LSR II flow cytometer running DIVA 8.0, or equivalent (BD Biosciences, special order). Our LSR II is equipped with four lasers with a configuration allowing 16-color, 18-parameter flow cytometry (**Table 3**)
- BD Aria III cell sorter running DIVA 8.0, or equivalent (BD Biosciences, special order). Our Aria III is equipped with three lasers with a configuration allowing 11-color, 13-parameter flow cytometry (**Table 4**)
- BD FACSDiva V8.0.1 software (BD Biosciences) for data acquisition
- FlowJo software V9.8.2 (TreeStar) for data analysis

REAGENT SETUP

Heparin Dissolve heparin in PBS at a final concentration of 1,000 U/ml. Filter this solution with a 0.2- μ m syringe filter and divide the solution into aliquots in a 5-ml polypropylene round-bottom tube. Store the heparin at 4 °C for up to 2 years.

Collagenase solution Dissolve 100 mg of collagenase type IV in 50 ml of RPMI-1640 to obtain a 2 mg/ml collagenase stock solution. Filter this solution with a 0.2- μ m syringe filter. Store the solution in 10-ml aliquots at -20 °C for up to 1 year.

Freezing medium Prepare freezing medium by adding 10% (vol/vol) DMSO in FBS on the day of use.

Thawing medium Prepare thawing medium by adding 10% (vol/vol) FBS in RPMI-1640, and store it at 4 °C for up to 4 weeks.

CFSE stock CFSE is resuspended in DMSO at a concentration of 5 mM. Store the stocks in aliquots of 50 μ l in Eppendorf tubes at -80 °C for up to 1 year. Each batch of CFSE should be titrated before use in the procedure (**Box 1**) on cells to determine the optimal concentration for labeling (0.5 μ M final was used in the example results shown here).

MS-5 growth medium Prepare the growth medium by adding 10% (vol/vol) FBS and 1% (vol/vol) penicillin-streptomycin in α -MEM.

▲ **CRITICAL** Prepare the medium in advance and store it at 4 °C for up to 2–3 weeks.

Mitomycin C solution Dissolve mitomycin C in sterile H₂O to obtain a 0.5 mg/ml stock solution. Store the solution in 500- μ l aliquots at -20 °C for up to 1 year.

Cytokine buffer Mix 0.1% (vol/vol) HSA in PBS. Sterilize the solution by filtration using a 0.2- μ m syringe filter, and store it for up to 6 months at 4 °C.

Reconstitution of cytokines Reconstitute human cytokines in cytokine buffer at a stock concentration of 20 μ g/ml for GM-CSF and SCF ligand and 100 μ g/ml for FLT3L. Store the cytokines in 50- μ l aliquots at -80 °C for up to 2 years. ▲ **CRITICAL** Vials of lyophilized cytokines should be centrifuged in a microcentrifuge at maximum speed for 1 min at room temperature (20–25 °C) before opening vials.

Formaldehyde working solution Mix 2% (vol/vol) formaldehyde in PBS. Store the solution at 4 °C for up to 1 month.

Staining buffer Mix 1% (vol/vol) FBS in PBS. ▲ **CRITICAL** Staining buffer can be prepared in advance and stored at 4 °C for up to 1 month.

Sorting buffer Mix 1% (vol/vol) FBS and 0.5 M EDTA (2 mM final) in PBS. ▲ **CRITICAL** Sorting buffer can be prepared in advance and stored at 4 °C for up to 1 month.



Box 1 | CFSE staining ● TIMING 30 min

To assess the ability of cells to proliferate in culture (Steps 36–38), we use a cell proliferation assay. Cells are labeled with the fluorescent dye CFSE. Those cells that proliferate show a reduction in CFSE fluorescence intensity, which is measured directly by flow cytometry.

1. Wash the cells twice in PBS and resuspend them in PBS at a 2×10^7 cells per ml concentration.
2. Prepare a $1 \mu\text{M}$ working solution of CFSE from the stock (5 mM) by diluting the stock in PBS. Label the cells by adding one volume of working solution of CFSE ($1 \mu\text{M}$) to one volume of cells. The final concentration of CFSE is then $0.5 \mu\text{M}$.
3. Incubate the cells in the dark with gentle mixing at room temperature for 8 min.
4. Quench the reaction by adding an equal volume of FBS for 2 min.
5. Wash the cells twice with PBS and resuspend them in MS-5 growth medium.
6. To assess the proliferation of bulk CD34⁺ cells or purified progenitors (see Step 36B for isolation of progenitors using panel #3) during hematopoietic differentiation on MS-5 stromal cells, proceed directly to Step 33.

Live/Dead blue viability dye Thaw Live/Dead blue powder by leaving it for 10 min at room temperature. Add 50 μl of DMSO and vortex it thoroughly. Store the solution in 1- μl aliquots in Eppendorf tubes at -20°C for up to 1 year. Each batch of Live/Dead blue should be titrated before use in the procedure on dying cells, for example, cells kept in culture at a very dense concentration such as 20×10^6 cells per ml, to determine the optimal dilution for labeling (1/1,000 final in the example results shown here). When you are ready to use Live/Dead blue, thaw and keep on ice a 1- μl aliquot into which you add 99 μl of PBS (1/100 Live/Dead blue working solution).

Amine-reactive Live/Dead blue CompBeads Vortex the beads thoroughly before use. Resuspend one drop of positive beads and one drop of negative beads in 500 μl of PBS. Add 20 μl of Live/Dead blue working solution to 180 μl of beads solution in a 5-ml polypropylene round-bottom tube (final dilution of Live/Dead blue is 1/1,000). Incubate the mixture for 30 min at 4°C in the dark. Wash the beads twice with PBS. Resuspend the beads in 150 μl of formaldehyde working solution and transfer them to a titer tube. Prepare the beads on the day of use. ▲ **CRITICAL** It is crucial to use PBS alone and not staining buffer that contains serum, as proteins from the serum would prevent the binding of Live/Dead blue to the compensation beads.

Antibody staining solution The amounts of antibody needed per staining are determined by titration experiments done before performing the procedure. The optimal concentration of an antibody is determined by a titration experiment in which typically 2×10^6 cells in a 20- μl volume are stained with 1 \times , 2 \times , 4 \times and 8 \times the amount of antibody. The optimal concentration

for a specific antibody is the amount giving the best fluorochrome signal and the least fluorochrome spreading. To prepare the antibody staining solution, mix the titrated amount of antibody for all antibodies and make it up to 20 μl with staining buffer (Table 2). The staining volume is 40 μl total (20 μl of cell suspension + 20 μl of antibody staining solution). The staining volume should be scaled up according to the number of cells. Prepare this solution on the day of use. ▲ **CRITICAL** Spin the antibody staining solution in a microcentrifuge at maximum speed for 1 min at room temperature to remove antibody aggregates. Use the supernatant only to stain cells.

▲ **CRITICAL** Always prepare the antibody staining solution in excess (10% more than needed for the experiment).

BD CompBeads Vortex the beads thoroughly before use. Prepare a positive bead solution and a negative bead solution (typically one drop of beads is added to 500 μl of PBS for the positive solution). For the negative FACS control, add 100 μl of negative bead solution in one well of a 96-well V-bottom plate. For the positive FACS controls, add 100 μl of positive bead solution per well of a 96-well V-bottom plate for each control. Add the titrated amount of antibody. Incubate the 96-well plate for 30 min at 4°C in the dark. Wash the beads twice with PBS. Resuspend each control in 150 μl of formaldehyde working solution. Transfer the controls to titer tubes. Prepare the beads on the day of use. ▲ **CRITICAL** Carefully check that the monoclonal antibody chosen can be recognized by the beads (for example, use anti-mouse IgG CompBeads for mouse monoclonal antibodies).

PROCEDURE

Donor CB and BM collection and initial processing ● TIMING 10–45 min

! **CAUTION** All human blood, body fluids and tissues must be treated as if infectious and universal precautions must be taken by lab workers while manipulating these specimens.

! **CAUTION** All human biological waste to be discarded should be treated with bleach or it should be autoclaved, and then it can be discarded according to your institution disposal procedures.

▲ **CRITICAL** All steps should be carried out in a class II biological safety cabinet.

1| Obtain human samples from CB, as described in option A, or obtain and prepare a single-cell suspension of BM, as described in option B.

(A) CB sample ● TIMING ~10 min

- (i) Obtain a fresh cord blood unit (CBU; typically 80–140 ml) provided in citrate phosphate dextrose adenine (CPDA-1) preservative solution.

▲ **CRITICAL STEP** The CBU should be kept at room temperature until processing. For optimum results, processing should take place in <12 h, and the samples that are older than 24 h should not be used.

(B) BM sample ● TIMING ~45 min

- (i) Obtain biopsies from surgical procedures such as routine hip arthroplasty. The biopsy should be kept on ice immediately after surgical removal in a container for specimen collection, and it should be preserved in 1–2 ml of heparin (1,000 units per ml).

- (ii) Weigh the specimen for reference.
 - ▲ **CRITICAL STEP** Samples can be stored at 4 °C for a few hours before starting the isolation procedure.
 - ▲ **CRITICAL STEP** This protocol has been optimized for solid biopsies and not aspirates—i.e., a sample of the liquid portion of BM.
 - ▲ **CRITICAL STEP** This protocol is optimized for the processing of specimen weighing 20–40 g. For smaller or larger specimens, adjust the volumes accordingly.
- (iii) Wash the BM biopsy in PBS and transfer it into a 50-ml tube with 10–20 ml of collagenase solution. Incubate the mixture for 30 min at 37 °C under continuous agitation.
 - ! **CAUTION** Collagenase digestion of tissues to create single-cell suspensions may result in the destruction of certain cell surface markers. However, we did not observe the destruction of any of the surface markers that we tested.
 - ▲ **CRITICAL STEP** Add 10 ml of collagenase solution to every 20 g of tissue. Collagenase is thawed and kept on ice.
 - ▲ **CRITICAL STEP** This short digestion allows the disruption of the bony matrix, as well as the release of the fat constituting the marrow.
- (iv) Filter the BM cell suspension through a fine mesh nylon screen.

Isolation of CB and BM MNCs via density gradient ● TIMING 1.5 h

2| Prepare CB (option A) or BM (option B) density gradients.

(A) CB gradient

- (i) Dilute the entire CBU 1:1 with sterile PBS in an upright appropriately sized sterile tissue culture flask.
- (ii) Carefully and slowly layer 35 ml of diluted CB onto 15 ml of Ficoll-Paque in a 50-ml conical tube. Repeat the process in additional tubes for the remaining diluted CBU. If the last amount does not total 35 ml, make up the volume to 35 ml with PBS.

(B) BM gradient

- (i) Carefully and slowly layer 35 ml of BM cell suspension onto 15 ml of Ficoll-Paque in a 50-ml conical tube. If the amount does not total 35 ml, make up the volume to 35 ml with PBS.
 - ▲ **CRITICAL STEP** The more diluted the sample, the better the purity of the MNCs.
 - ▲ **CRITICAL STEP** To avoid mixing Ficoll-Paque and the cell suspension, tilt the 50-ml conical tube at a 45 °C angle and slowly let the blood run down on the side of the tube onto the Ficoll layer.

3| Centrifuge the mixture at 850g for 30 min at 20 °C in a swinging-bucket rotor with no brake.

4| Aspirate the upper layer (yellow layer corresponding to the plasma, in the case of CB) leaving the mononuclear cell layer (white layer at the interphase between the Ficoll and the plasma) undisturbed.

? TROUBLESHOOTING

5| Carefully transfer each mononuclear cell layer using a sterile transfer pipette to a new 50-ml conical tube.

6| Fill the 50-ml conical tubes with RPMI-1640, mix well, and centrifuge the tubes at 480g for 5 min at 20 °C with brake.

7| Carefully remove the supernatant completely. Pool the pellet of all 50-ml conical tubes. Fill the 50-ml conical tube with RPMI-1640, mix it well and centrifuge it at 480g for 5 min at 20 °C with brake.

▲ **CRITICAL STEP** CB samples sometimes show substantial contamination of the interphase layer with red blood cells. In that case, resuspend the cell pellet in 5 ml of ACK lysing buffer. Allow it to stand for 5 min at 4 °C. Fill the 50-ml conical tube with RPMI-1640, mix it well and centrifuge it at 480g for 5 min at 20 °C with brake. Remove the supernatant; resuspend the cells in 50 ml of RPMI-1640 and centrifuge them once more at 480g for 5 min at 20 °C with brake.

8| Carefully remove the supernatant completely. Resuspend the cells in 50 ml of staining buffer, count the cells using a hemocytometer or other cell counter, and determine the viability by trypan blue stain exclusion. If you are not pausing, proceed directly to Step 35 (staining panel #1, 2 or 3) or Step 33 (staining panel #4 or 5).

■ **PAUSE POINT** Keep the cells in staining buffer at 4 °C for 1–2 h until use, or freeze them for long-term storage, as described in Steps 9–12.

Freezing of CB and BM MNCs ● TIMING 20 min

9| Centrifuge the cells at 480g for 5 min at 20 °C.

10| Resuspend the cells at a density of 10×10^6 cells per ml in freezing medium.

PROTOCOL

11| Transfer 1 ml of cells in freezing medium per sterile cryogenic micro tube.

▲ **CRITICAL STEP** Label each tube clearly (date, sample name, cell concentration).

▲ **CRITICAL STEP** The optimal cell concentration for freezing is 10×10^6 cells per ml. However, you can go up to 50×10^6 cells per ml in case of large specimens.

12| Put the cryogenic vial in a freezing container, and store it at -80°C for 12–24 h before transferring it to the liquid nitrogen tank for long-term storage.

■ **PAUSE POINT** Cells can be stored in liquid nitrogen for years.

Thawing CB and BM MNCs ● **TIMING 30 min**

13| Add 10 ml of cold thawing medium in a 15-ml conical tube to thaw one vial or add 40 ml of cold thawing medium in a 50-ml conical tube to thaw up to ten vials.

▲ **CRITICAL STEP** To obtain the best possible survival, thawing of cells must be performed as quickly as possible, and the thawing medium should be cold to minimize heat shocks.

14| Remove the vial from the liquid nitrogen tank, and hold it at room temperature until the sides are thawed but the center remains frozen.

▲ **CRITICAL STEP** Do not place the vial into a 37°C water bath, as it is important not to dramatically heat-shock the cells.

15| Transfer the contents of the vial (~1 ml) into a 15-ml conical tube containing cold thawing medium.

16| Centrifuge the cells at $480g$ for 5 min at 20°C .

17| Resuspend the cells in staining buffer for extemporaneous use.

Culture of mouse MS-5 stromal cells ● **TIMING 8 d**

▲ **CRITICAL** Mouse MS-5 stromal cells are only required for staining panel #4 or 5.

18| Culture MS-5 stromal cells in 10-cm tissue culture dishes with 10 ml of MS-5 growth medium. Place the cells in a CO_2 cell incubator.

▲ **CRITICAL STEP** MS-5 stromal cells grow in monolayers. Examine the tissue culture dish under the microscope; the cells are ready to be split when they are 95% confluent.

19| Aspirate the MS-5 growth medium and wash the cells twice with 10 ml of PBS.

20| Add 2 ml of trypsin-EDTA 0.05% (wt/vol) solution and incubate the cells for 2 min at 37°C in a CO_2 cell incubator.

▲ **CRITICAL STEP** Inadequate washing of cells with PBS or using an old trypsin solution may result in partial detachment of cells from the dish.

21| Add 10 ml of MS-5 growth medium and collect the cells by pipetting.

22| Transfer the cell suspension in a 15-ml conical tube and centrifuge it at $480g$ for 5 min at 20°C .

23| Aspirate the supernatant and resuspend the cells in 10 ml of MS-5 growth medium.

24| Add 0.5 ml of cell suspension to 9.5 ml of MS-5 growth medium, and plate the cells onto a 10-cm tissue culture dish. Place the cells in a CO_2 cell incubator.

25| When the culture is 95% confluent, if required, split the dish for maintenance (by repeating Steps 19–24). Confluence should be reached after 3–4 d of culture.

26| To expand the cells for coculture experiment, prepare an extra tissue culture dish by adding 1 ml of cell suspension to 19 ml of MS-5 growth medium into a 15-cm Petri dish.

▲ **CRITICAL STEP** Do not use cells that have a high passage number or that are growing slowly. The doubling time for healthy MS-5 is ~24 h.

■ **PAUSE POINT** It is possible to pause the protocol at this stage by freezing and storing MS-5 stromal cells in liquid nitrogen tank for future use. Cells can be frozen and thawed as described in Steps 9–17 for MNCs.

Hematopoietic differentiation on MS-5 stromal cells ● TIMING 8 d

27| The day before the coculture experiment (day 0), take the extra tissue culture dish of MS-5 stromal cells that was prepared (Step 26), and proceed to mitomycin C treatment. Aspirate the medium without disturbing the MS-5 stromal cell layer. Add 20 ml of fresh MS-5 growth medium containing 10 µg/ml mitomycin C. Incubate the dish for 3 h in a CO₂ cell incubator.

28| Trypsinize the MS-5 stromal cell layer, as described in Steps 19–23.

29| Count the MS-5 cells using a hemocytometer or other cell counters and determine viability by trypan blue stain exclusion.

30| Centrifuge the cells at 480g for 5 min at 20 °C; aspirate the supernatant.

31| Resuspend the pellet at 2.5 × 10⁵ per ml in MS-5 growth medium.

32| Seed 2.5 × 10⁴ cells (100 µl) per well of a 96-well flat-bottom tissue culture plate. Incubate the cells overnight in a CO₂ cell incubator.

33| The following day (day 1), resuspend a maximum of 10⁴ bulk CD34⁺ cells or purified progenitors (see Step 36B for isolation of progenitors using panel #3) in 100 µl of MS-5 growth medium containing 40 ng/ml GM-CSF and SCF ligand and 200 ng/ml FLT3L.

▲ CRITICAL STEP If progenitors need to be stained with CFSE (panel #4) before coculture with MS-5 stromal cells, proceed as described in **Box 1**.

34| Seed the progenitor cells on top of the MS-5 stromal cells prepared in Step 32. Incubate the cells for 7 d in a CO₂ cell incubator.

Cell surface staining ● TIMING 1–2 h

35| Take all or an aliquot of the cell suspension from Step 8. Use at least 2–4 × 10⁶ cells for simple phenotyping (panel #1) and characterization (panel #2) staining. If you are sorting the cells (panel #3), start with a sufficient number of cells to obtain a reasonable number of progenitors after sorting. We usually sort 100–200 × 10⁶ CB or BM MNCs to achieve sufficient progenitors. Use the whole MS-5 culture from Step 34 for culture output (panel #4) and culture proliferation (panel #5) staining.

▲ CRITICAL STEP We recommend working with fresh samples. If you are working with frozen samples, thawing and staining should preferably be performed on the same day. If you are using frozen cells, count the cells (from Step 17) after thawing using the hemocytometer or other cell counter and determine the viability by Trypan Blue Stain exclusion.

? TROUBLESHOOTING

36| If you are performing cell surface staining for panel #1 and 2, follow option A; for panel #3, follow option B; and for panel #4 and panel #5, follow option C.

! CAUTION This and all subsequent steps should avoid exposure to direct light to preserve fluorochromes.

▲ CRITICAL STEP Do not forget to prepare the compensation tubes as well (see Reagent Setup).

(A) Staining for panel #1 and #2 ● TIMING 1 h 30 min

- (i) Resuspend the cells (from Step 8) in PBS at a density of 100 × 10⁶ cells per ml.
- (ii) Put 2 × 10⁶ cells (20 µl) in each well of a 96-well V-bottom plate.
- (iii) Add 2 µl of 1/100 Live/Dead blue working solution to each well.
- (iv) Incubate the cells at 4 °C in the dark for 20 min.
- (v) Wash the cells by adding 150 µl of staining buffer per well.
- (vi) Centrifuge the cells at 480g for 5 min at 20 °C; flick the plate to decant the supernatant.
- (vii) Add 20 µl of the antibody staining solution per well.
- (viii) Incubate the cells at 4 °C in the dark for 30 min.
- (ix) Wash the cells by adding 150 µl of staining buffer per well.
- (x) Centrifuge the cells at 480g for 5 min at 20 °C; flick the plate to decant the supernatant.
- (xi) Resuspend the cells in 150 µl of formaldehyde working solution per well. Transfer the samples to titer tubes.
- (xii) Keep the samples in the dark at 4 °C, and acquire samples on a flow cytometer.

■ PAUSE POINT Fixed cells can be kept in the dark at 4 °C for up to 48 h before analyzing by flow cytometry.

PROTOCOL

(B) Staining for panel #3 ● TIMING 1 h

- (i) Resuspend the cells (from Step 8) in staining buffer at a density of 400×10^6 cells per ml in a 50-ml conical tube.
- (ii) Add 20 μ l per 8×10^6 cells of the antibody staining solution.
- (iii) Incubate the cells at 4 °C in the dark for 30 min.
- (iv) Wash the cells by adding 40 ml of sorting buffer.
- (v) Centrifuge the cells at 480g for 5 min at 20 °C. Aspirate the supernatant.
- (vi) Resuspend the cells in sorting buffer at a density of 30×10^6 cells per ml, and transfer them to a 5-ml polypropylene round-bottom tube.

▲ **CRITICAL STEP** We recommend filtering the cell sample before sorting using a 5-ml polystyrene round-bottom tube with a cell-strainer cap. Transfer the sample in a 5-ml polypropylene round-bottom tube for sorting.

- (vii) Keep the sample in the dark on ice, and then sort the sample on a cell sorter in a timely manner (within 1 h).

(C) Staining for panel #4 and #5 ● TIMING 1 h 30 min

- (i) Collect all cells from MS-5 stromal coculture (from Step 34) by vigorous pipetting, and transfer them to a 96-well V-bottom plate.
- (ii) Centrifuge the cells at 480g for 5 min at 20 °C; flick the plate to decant the supernatant.
- (iii) Stain the cells by the standard surface staining method, as in Step 36A(iii–xii).

■ **PAUSE POINT** Fixed cells can be kept in the dark at 4 °C for up to 48 h before analyzing by flow cytometry.

Acquisition and cell sorting ● TIMING ~1–4 h

37| Run the compensation controls (see Reagent Setup). Create the compensation matrix and apply it to tubes for both acquisition and sorting.

▲ **CRITICAL STEP** Compensation controls must consist of a negative and a positive population for each single fluorochrome. The negative and positive populations should have the same autofluorescence, which means that each positive bead should be compared with its matching negative bead.

▲ **CRITICAL STEP** When you first set up a panel, you must include a nonstained tube, as well as FMO control (FMO) tubes. FMOs sequentially contain all fluorochrome or tandem dyes minus one; they are used to define proper gates and to control the compensation process.

? TROUBLESHOOTING

38| Run the samples (from Step 36A(xii) and Step 36C(iii)) for acquisition on the flow cytometer. Analyze data using FlowJo, as depicted in **Figure 2** (panel #1), **Figure 3** (panel #2), **Figure 5** (panel #4) and **Figure 6** (panel #5).

▲ **CRITICAL STEP** If you do not have FlowJo software, use FACSDiva software or an equivalent.

? TROUBLESHOOTING

39| Proceed to simultaneous sorting of the four populations of interest—i.e., GMDPs, MDPs, CDPs and pre-cDCs—from MNCs obtained in Step 8 and stained in Step 36B(i–vi) using an 85- μ m nozzle cell sorter. Collect the sorted cells in 1.5-ml conical-bottom tubes with screw caps, in which you add 300 μ l of MS-5 growth medium and vortex the collection tubes to coat the surface. You can collect up to 2.5×10^5 cells per tube.

▲ **CRITICAL STEP** If you are sorting cells to analyze mRNA expression by gene array, cells should be recovered without interruption and should be kept at 4 °C at all times to avoid changes in gene expression.

? TROUBLESHOOTING

? TROUBLESHOOTING

Step 4

If the upper layer is contaminated with RBCs, the samples—that is, upper layer and interphase—should be mixed and layered over a second batch of Ficoll in a new 50-ml conical tube. Repeat this step if necessary.

Step 35

Post-thaw samples may clot. The cells are probably aggregating because of the release of DNA by cells dying during the freezing-thawing process. Include DNase such as benzonase (final concentration 25 U/ml) in thawing medium (Steps 13–17), as well as in staining buffer in Steps 36A(iii,iv), 36A(vii,viii) and 36B(ii,iii).

Step 37

If you have no staining of compensation beads, it may be because not all compensation controls have been prepared in Step 36. You must prepare a compensation control for each fluorochrome or conjugate if you are using tandem dyes. It may also be that you are not using the proper beads; use anti-mouse Ig κ for mouse monoclonal antibodies and anti-rat Ig κ for rat monoclonal antibodies.

Step 38

If you have clogging of the sample line while acquiring samples, the cells are probably aggregating because of poor viability. We recommend resuspending the cells in sorting buffer that contains EDTA and filtering the cells using 5-ml polystyrene round-bottom tubes with cell-strainer caps.

Step 39

If you have clogging of the sample line while sorting samples, the cells are probably aggregating because of poor viability. We recommend diluting the cells and filtering the sample again using a 5-ml polystyrene round-bottom tube with a cell-strainer cap.

● TIMING

Staining panel #1: ~3 h–5 h 30 min

Steps 1–8, fresh samples: ~2 h or Steps 13–17, frozen samples: 30 min

Steps 35 and 36A, staining: 1 h 30 min

Steps 37 and 38, acquisition: ~1–2 h

Staining panel #2: ~3 h–5 h 30 min

Steps 1–8, fresh samples: ~2 h or Steps 13–17, frozen samples: 30 min

Steps 35 and 36A, staining: 1 h 30 min

Steps 37 and 38, acquisition: ~1–2 h

Staining panel #3: 3 h 30 min–7 h

Steps 1–8, fresh samples: ~2 h or Steps 13–17, frozen samples: 30 min

Steps 35 and 36B, staining: 1 h

Steps 37 and 39, sorting: ~2–4 h

Staining panel #4: 3 h–5 h 30 min + 8 d coculture

Steps 1–8, fresh samples: ~2 h or Steps 13–17, frozen samples: 30 min

Steps 18–26, culture of mouse MS-5 stromal cells: 8d

Steps 27–34, hematopoietic differentiation on MS-5 stromal cells: 8 d

Steps 35 and 36C, staining: 1 h 30 min

Steps 37 and 38, acquisition: ~1–2 h

Staining panel #5: ~3 h–5 h 30 min + 8 d coculture

Steps 1–8, fresh samples: ~2 h or Steps 13–17, frozen samples: 30 min

Box 1, CFSE staining: 30 min

Steps 18–26, culture of mouse MS-5 stromal cells: 8d

Steps 27–34, hematopoietic differentiation on MS-5 stromal cells: 8 d

Steps 35 and 36C, for staining: 1 h 30 min

Steps 37 and 38, acquisition: ~1–2 h

ANTICIPATED RESULTS

Typically, GMDPs, MDPs and CDPs are found in the Lin⁻ CD34⁺ cells, which comprise only a small and variable fraction of human BM cells (2–4%) and CB cells (~1%): (i) GMDPs represent 5% (BM) and 10% (CB) of CD34⁺ cells; (ii) MDPs represent 0.5% (BM) and 0.5% (CB) of CD34⁺ cells; and (iii) CDPs represent 2% (BM) and 0.4% (CB) of CD34⁺ cells¹⁴. Pre-cDCs, which are found in the Lin⁻ CD34⁻ cells, represent 0.1% (BM) and 0.008% (CB) of CD45⁺ cells¹⁵. Therefore, DC progenitors are rare cells; some variability in the number of progenitors is expected from one donor to another, but progenitors are consistently found in all BM and CB specimens. Variability between subjects is particularly problematic for BM samples that are obtained from elderly donors, in which age-related changes may affect the composition and the phenotype of the cells.

As this protocol is based mainly on flow cytometry, it is crucial to verify the proper function and setup of the flow cytometer or cell sorter by running an appropriate cytometer procedure and making sure that laser delays are properly adjusted²⁴. This step is often omitted and an improper setting will give inconsistent results.

To perform a full and comprehensive evaluation of BM and CB hematopoietic progenitors using multiparametric flow cytometry (panels #1 and #2), an ideal number of 2×10^6 (BM) or 4×10^6 (CB) cells are required. Therefore, a small fraction of BM or CB is used, allowing the majority of the sample to be used for other studies. This protocol provides an appropriate method for BM and CB analysis that could be applied to samples from healthy or abnormal donors. Moreover, the same procedure could be adapted to other tissues—that is, blood, lymph node or tonsil—in order to identify and sort pre-cDCs for further studies and applications. Of note, the low frequency of pre-cDCs in whole blood (~15 cells per ml of blood) dictates the use of several milliliters of blood for their quantification.

To ensure successful hematopoietic differentiation of DC progenitors in MS5+FSG culture, cell sorting should be performed under sterile conditions, and sorting parameters such as sheath fluid pressure should be optimized for viability of the cells. Ideally, a maximum of 10⁴ CD34⁺ HSPCs or DC progenitors are plated on top of MS-5 stromal cells for 7 d. After 2 d of expansion, colonies can be observed under the microscope. The proportion of CD45⁺ cells substantially increases over 7 d. For early hematopoietic progenitors such as CD34⁺ HSPCs, the yield of cells can be increased a little bit by extending the culture; however, over 14 d expansion is associated with substantially lower output of CD45⁺ cells because of competition for cytokines and nutrients, as well as stromal cell death. The efficiency of the hematopoietic differentiation is going to depend on the sample itself, as variability between donors exists, and the number of cells that are initially cocultured on MS-5 stromal cells. After the cells are sufficiently expanded, further characterization can be performed using flow cytometry (panels #4 and #5).

ACKNOWLEDGMENTS This work was supported by US National Institutes of Health (NIH) grant 1U19AI111825-01 (to M.C.N.), NIH grant AI13013, NIH/National Center for Advancing Translational Sciences (NCATS) grant UL1 TR000043, The Iris and Junming Le Foundation (to G.B.), The Empire State Stem Cell Fund through New York State Department of Health Contract no. C029562 (to K.L.) and NIH/National Institute of Allergy and Infectious Disease (NIAID) grant AI101251 (to K. Liu). M.C.N. is a Howard Hughes Medical Institute investigator.

AUTHOR CONTRIBUTIONS G.B., J.L., K.L. and M.C.N. conceived and developed the original strategy to identify the DC progenitors; G.B. modified the protocol and performed the experiments; G.B. and M.C.N. wrote the manuscript; and all authors reviewed the manuscript.

COMPETING FINANCIAL INTERESTS The authors declare no competing financial interests.

Reprints and permissions information is available online at <http://www.nature.com/reprints/index.html>.

- Steinman, R.M. & Hemmi, H. Dendritic cells: translating innate to adaptive immunity. *Curr. Top. Microbiol. Immunol.* **311**, 17–58 (2006).
- Steinman, R.M. & Banchereau, J. Taking dendritic cells into medicine. *Nature* **449**, 419–426 (2007).
- Manicassamy, S. & Pulendran, B. Dendritic cell control of tolerogenic responses. *Immunol. Rev.* **241**, 206–227 (2011).
- Colonna, M., Trinchieri, G. & Liu, Y.J. Plasmacytoid dendritic cells in immunity. *Nat. Immunol.* **5**, 1219–1226 (2004).
- Jin, J.O., Zhang, W., Du, J.Y. & Yu, Q. BDCA1-positive dendritic cells (DCs) represent a unique human myeloid DC subset that induces innate and adaptive immune responses to *Staphylococcus aureus* infection. *Infect. Immun.* **82**, 4466–4476 (2014).
- Cohn, L. *et al.* Antigen delivery to early endosomes eliminates the superiority of human blood BDCA3⁺ dendritic cells at cross presentation. *J. Exp. Med.* **210**, 1049–1063 (2013).
- Bachem, A. *et al.* Superior antigen cross- presentation and XCR1 expression define human CD11c⁺CD141⁺ cells as homologues of murine CD8⁺ dendritic cells. *J. Exp. Med.* **207**, 1273–1281 (2010).
- Crozat, K. *et al.* The XC chemokine receptor 1 is a conserved selective marker of mammalian cells homologous to mouse CD8a⁺ dendritic cells. *J. Exp. Med.* **207**, 1283–1292 (2010).
- Jongbloed, S.L. *et al.* Human CD141⁺ (BDCA-3)⁺ dendritic cells (DCs) represent a unique myeloid DC subset that cross-presents necrotic cell antigens. *J. Exp. Med.* **207**, 1247–1260 (2010).
- Poulin, L.F. *et al.* Characterization of human DNGR-1⁺ BDCA3⁺ leukocytes as putative equivalents of mouse CD8a⁺ dendritic cells. *J. Exp. Med.* **207**, 1261–1271 (2010).
- Villadangos, J.A. & Shortman, K. Found in translation: the human equivalent of mouse CD8⁺ dendritic cells. *J. Exp. Med.* **207**, 1131–1134 (2010).
- Robbins, S.H. *et al.* Novel insights into the relationships between dendritic cell subsets in human and mouse revealed by genome-wide expression profiling. *Genome Biol.* **9**, R17 (2008).
- Geissmann, F. *et al.* Development of monocytes, macrophages, and dendritic cells. *Science* **327**, 656–661 (2010).
- Lee, J. *et al.* Restricted dendritic cell and monocyte progenitors in human cord blood and bone marrow. *J. Exp. Med.* **212**, 385–99 (2015).
- Breton, G. *et al.* Circulating precursors of human CD1c⁺ and CD141⁺ dendritic cells. *J. Exp. Med.* **212**, 401–413 (2015).
- Doulatov, S. *et al.* Revised map of the human progenitor hierarchy shows the origin of macrophages and dendritic cells in early lymphoid development. *Nat. Immunol.* **11**, 585–593 (2010).
- Hao, Q.L. *et al.* Identification of a novel, human multilymphoid progenitor in cord blood. *Blood* **97**, 3683–3690 (2001).
- Hoebeke, I. *et al.* T-, B- and NK-lymphoid, but not myeloid cells arise from human CD34⁺CD38⁺CD7⁺ common lymphoid progenitors expressing lymphoid-specific genes. *Leukemia* **21**, 311–319 (2007).
- Majeti, R., Park, C.Y. & Weissman, I.L. Identification of a hierarchy of multipotent hematopoietic progenitors in human cord blood. *Cell Stem Cell* **1**, 635–645 (2007).
- Wang, J. *et al.* SCID-repopulating cell activity of human cord blood-derived CD34⁺ cells assured by intra-bone marrow injection. *Blood* **101**, 2924–2931 (2003).
- Boissel, N. *et al.* Defective blood dendritic cells in chronic myeloid leukemia correlate with high plasmatic VEGF and are not normalized by imatinib mesylate. *Leukemia* **18**, 1656–1661 (2004).
- Bigley, V. *et al.* The human syndrome of dendritic cell, monocyte, B and NK lymphoid deficiency. *J. Exp. Med.* **14**, 227–234 (2011).
- Hambleton, S. *et al.* IRF8 mutations and human dendritic-cell immunodeficiency. *N. Engl. J. Med.* **365**, 127–138 (2011).
- Perfetto, S.P. *et al.* Quality assurance for polychromatic flow cytometry using a suite of calibration beads. *Nat. Protoc.* **7**, 2067–2079 (2012).