

# Disruption of Frontal Theta Coherence by $\Delta^9$ -Tetrahydrocannabinol is Associated with Positive Psychotic Symptoms

Paul D Morrison<sup>\*1</sup>, Judith Nottage<sup>1</sup>, James M Stone<sup>1,2</sup>, Sagnik Bhattacharyya<sup>1</sup>, Nigel Tunstall<sup>1</sup>, Rudolf Brenneisen<sup>3</sup>, David Holt<sup>4</sup>, Daniel Wilson<sup>1,5</sup>, Alex Sumich<sup>1,5</sup>, Philip McGuire<sup>1</sup>, Robin M Murray<sup>1</sup>, Shitij Kapur<sup>1</sup> and Dominic H ffytche<sup>1</sup>

<sup>1</sup>The Biomedical Research Centre, Institute of Psychiatry, King's College London, Denmark Hill, UK; <sup>2</sup>Department of Experimental Medicine, Imperial College London, London, UK; <sup>3</sup>Department of Clinical Research, University of Bern, Bern, Switzerland; <sup>4</sup>Division of Clinical Sciences, The Analytical Unit, St George's University of London, London, UK; <sup>5</sup>Division of Psychology, School of Social Sciences, Nottingham Trent University, Nottingham, UK

The main ingredient in cannabis,  $\Delta^9$ -tetrahydrocannabinol (THC), can elicit acute psychotic reactions in healthy individuals and precipitate relapse in schizophrenic patients. However, the neural mechanism of this is unknown. We tested the hypothesis that THC psychopathology is related to changes in electroencephalography (EEG) power or inter-regional coherence. In a within-subjects design, participants ( $n = 16$ ) were given intravenous THC (1.25 mg) or placebo under double-blind conditions, during EEG recordings. Using fast-Fourier transform, EEG data were analyzed for power and coherence in the delta (1–3.5 Hz), theta (3.5–7 Hz), alpha (8–13 Hz), beta (14–25 Hz), low-gamma (30–40 Hz), and high-gamma (60–70 Hz) bands during engagement in the n-back test of working memory (WM). Compared with placebo, THC evoked positive and negative psychotic symptoms, as measured by the positive and negative syndrome scale ( $p < 0.001$ ) and slowed WM performance ( $p < 0.05$ ). Under THC, theta power was specifically reduced, ( $p < 0.001$ ) regardless of WM load; however, the reduction showed no relationship with psychotic symptoms or WM impairment. Coherence between bi-frontal electrodes in the theta band was also reduced by THC ( $p < 0.05$ ) and these reductions correlated with the change in positive psychotic symptoms ( $\rho = 0.79$ ,  $p < 0.001$ ). Bi-frontal specificity was suggested by the absence of a relationship between psychotic symptoms and fronto-parietal coherence. The results reveal that the pro-psychotic effects of THC might be related to impaired network dynamics with impaired communication between the right and left frontal lobes.

*Neuropsychopharmacology* (2011) **36**, 827–836; doi:10.1038/npp.2010.222; published online 8 December 2010

**Keywords:**  $\Delta^9$ -tetrahydrocannabinol; EEG; psychosis; theta

## INTRODUCTION

There has been a renewed interest in the cannabis-model of acute psychosis, driven in part by epidemiological studies, which have demonstrated that the use of cannabis is a risk factor for the development of schizophrenia (Arseneault *et al*, 2004; Moore *et al*, 2007). The major psychoactive effects of cannabis stem from the action of  $\Delta^9$ -tetrahydrocannabinol (THC) at central CB<sub>1</sub> receptors (CB<sub>1</sub>Rs; Howlett *et al*, 2002; Mechoulam *et al*, 1970). Recent laboratory studies have confirmed earlier reports that used plant-derived preparations by showing that pure intravenous (IV) THC elicits acute schizophrenia-like

symptoms and cognitive impairments in healthy volunteers (D'Souza *et al*, 2004; Morrison *et al*, 2009). Similarly, schizophrenic patients can experience a sudden and transient relapse of psychotic symptoms following IV THC despite having been previously well on dopamine-based anti-psychotic medication (D'Souza *et al*, 2005).

At present, the neurophysiological mechanism responsible for the pro-psychotic properties of THC is unknown. The CB<sub>1</sub>R is found at high density in the prefrontal and association cortices, the anterior, mediodorsal, and intralaminar thalamic nuclei, the hippocampal complex, amygdala, entorhinal cortex, basal ganglia, substantia-nigra pars-reticulata, and cerebellum (Eggen and Lewis, 2007; Glass *et al*, 1997; Herkenham *et al*, 1991). Typically, CB<sub>1</sub>Rs are localized at the presynaptic terminals of glutamate and GABA-ergic neurons (Bodor *et al*, 2005; Eggen *et al*, 2010; Hill *et al*, 2007). Their endogenous transmitters (endocannabinoids, eCBs) are released from dendritic spines and function as retrograde signalling molecules (meaning that

\*Correspondence: Dr PD Morrison, The Biomedical Research Centre, Institute of Psychiatry, King's College London, De Crespigny Park, Denmark Hill, London SE5 8AF, UK; Tel: +44 208 391 5947, E-mail: paul.morrison@iop.kcl.ac.uk

Received 4 August 2010; revised 15 October 2010; accepted 3 November 2010

neurochemical 'information' is passed from dendrite to axon terminal; Piomelli, 2003). At the synaptic level, the eCBs inhibit GABA and glutamate release from nerve endings, over short and sustained durations, whereas at the psychological level eCBs are vital for learning and memory (Chevalleyre *et al*, 2006; Freund *et al*, 2003). Exogenous cannabinoids such as THC probably do not capture the subtleties of eCB signalling (which involves tightly regulated local release and re-uptake), and hence, are associated with disruption of learning and memory performance, and presumably their underlying neural correlates (Murray *et al*, 2007; Ranganathan and D'Souza, 2006).

In the last two decades, it has become clear that neural oscillations are intrinsic to higher CNS functions (Buzsaki and Draguhn, 2004; Uhlhaas *et al*, 2009; Varela *et al*, 2001). Oscillations arise from the synchronized firing of large numbers of neurons. In turn, the precise timing of spikes from individual neurons is constrained by ongoing rhythms within the network. Oscillations are believed to be essential for rapid, dynamic integration within and between brain regions. Synchronized gamma (30–200 Hz) rhythms 'bind' local assemblies, whereas lower frequencies (theta, alpha, and beta) sub-serve long-distance communication between brain areas (Kopell *et al*, 2000; Rodriguez *et al*, 1999; von Stein *et al*, 2000). Studies in animals have begun to unravel the effects of THC on such oscillations. Robbe *et al* (2006) showed that THC decreased the power of theta, gamma, and ripple oscillations in the rat hippocampus, effects that could be blocked by CB<sub>1</sub> antagonists. Theta and gamma rhythms are believed to be essential for working memory (WM) and the encoding of episodic memories, whereas ripples are involved in the transfer of memory to cortical stores. In agreement, Hajos *et al* (2008) found that CB<sub>1</sub> agonists disrupted theta and gamma oscillations within the septo-hippocampal system in rats, and disrupted auditory-gating; effects that were inhibited by CB<sub>1</sub> antagonists. In humans, there have been several recent reports of the effects of cannabis on neuronal oscillations, recorded using electroencephalography (EEG). A study by Ilan *et al* (2004) analyzed EEG power in 10 subjects, during the performance of cognitive tasks. Working and episodic memory performance was poorer following inhalation of marijuana (3.5% THC) and the principal EEG findings were decreased global theta power and reduced alpha band reactivity. Similarly, in a study of inhaled marijuana (0, 29, 49, and 69 mg) in 16 participants, Bocker *et al* (2010) observed a dose-dependent decrease of resting theta and beta power. Furthermore, they found the greater the decrease in theta power during a WM task, the greater the slowing of response time.

Our primary interest in this study was to characterize EEG changes linked to the pro-psychotic properties of THC. Neither of the previous EEG studies of THC had investigated psychotic symptoms and one possibility was that psychotic symptoms would be related to the reductions in theta power demonstrated in these studies. However, more recent work has highlighted the importance of brain connectivity in the generation of psychotic symptoms. In particular, reductions in EEG coherence have been linked to specific positive symptoms (auditory hallucinations; Ford *et al*, 2002). EEG coherence is a measure of the correlation of activity in different brain regions. A high coherence

indicates that EEG activity within a specific frequency band in one brain region predicts EEG activity in same frequency band in another and that the temporal relationship (phase) of the activity at the two sites is relatively constant. The implication of such amplitude and phase relationships is of cross talk and shared function between the two regions. The link between positive symptoms and reductions in EEG coherence found in schizophrenia, suggested a working hypothesis that the pro-psychotic properties of THC relates to a reduction in EEG coherence, specifically in the theta band given the animal and human data outlined above.

## METHODS

The study was approved by the Joint Institute of Psychiatry and Maudsley Hospital Ethics Committee. All subjects provided written informed consent. Safety protocols have previously been described (Morrison *et al*, 2009).

### Design

A randomized, double-blind, placebo-controlled crossover study in healthy volunteers of the effects of IV THC (1.25 mg) on WM performance, psychopathology, and concurrent EEG activity.

### Participants

A total of 20 healthy participants were recruited via the King's College e-mail lists. Inclusion criteria were: age between 21 and 50 years, previous cannabis use  $\geq 1$ ; a score of  $<15$  on the General Health Questionnaire (GHQ-12, Goldberg and Blackwell, 1970). Exclusion criteria included: current pregnancy, a history of mental illness, drug or alcohol dependence (excluding nicotine), current or past severe medical disorders, or a history of major mental illness in a first-degree family member. Previous alcohol and drug use were recorded and a urine drug screen was carried out. Participants were asked to avoid alcohol and drugs for 24 h before, and to abstain from driving for 24 h after experiments. Sessions were performed at least 2 weeks apart and started between 0900 and 1400 hours. Placebo and THC were administered under double-blind conditions, in a randomized counterbalanced order. Subjects received remuneration for their participation.

### Pharmaceuticals

Synthetic THC was supplied by THC Pharm GmbH (Frankfurt am Main, Germany) and prepared as 1 mg/ml vials for IV injection, by Bichsel Laboratories (Interlaken, Switzerland) as previously described (Naef *et al*, 2004). After dilution in normal saline, preparations for injection contained 1.25% (v/v) ethanol absolute. Sterile cannulae were inserted into veins in the antecubital fossa of both arms: one for administration of pharmaceuticals and one for plasma sampling. THC was administered in 1 ml/min pulses over a period of 5 min (total dose = 1.25 mg). Blood samples were taken at baseline and at 1, 5, 15, 60, and 120 min after dosing, for analysis of THC as previously described (Morrison *et al*, 2009). The plasma concentration

of THC following IV delivery follows a similar time course to that observed following inhalation (Naef *et al*, 2004). The dose (1.25 mg) was selected on the basis of previous studies, and roughly corresponds to one standard 'joint' (D'Souza *et al*, 2004; Morrison *et al*, 2009; Bhattacharyya *et al*, 2010).

### Psychopathological and Cognitive Measures

Psychotic symptoms were rated using the positive and negative syndrome scale (PANSS; Kay *et al*, 1987). A completely independent PANSS-trained senior psychiatrist rated 3 × 10-min periods—at baseline, at 30-min post-pharmaceutical, and finally at 90-min post-pharmaceutical. Apart from these 3 periods, the psychiatrist and participant were kept separate to minimize potential bias. The PANSS consists of a positive subscale (7 items: delusions, conceptual disorganization, hallucinations, hyperactivity, grandiosity, suspiciousness/persecution, and hostility), a negative subscale (7 items: blunted affect, emotional withdrawal, poor rapport, passive/apathetic social withdrawal, difficulty in abstract thinking, lack of spontaneity and flow of conversation, stereotyped thinking) and a general psychopathological subscale (14 items). Items are rated from 1–7 (absent–severe), thus the range of scores on the positive subscale is 7–49. It is recognized that there is wide inter-individual variation in PANSS scores following IV THC (D'Souza *et al*, 2004; Morrison *et al*, 2009). Previously, we found that investigator-rated (PANSS) and participant-rated (Community Assessment of Psychic Experiences) measures of THC-elicited positive symptoms were in agreement ( $\rho = 0.62$ ,  $p < 0.001$ ), and that both measures of positive symptoms were distinct from anxiety (Morrison *et al*, 2009). Considered as a group, however, positive symptoms following THC are modest and short-lived. Overall, in earlier studies ~35–50% of healthy participants showed changes of  $\geq 3$ –4 points on the PANSS positive subscale under THC conditions (D'Souza *et al*, 2004; Morrison *et al*, 2009).

Immediately after the psychiatric assessment at 30-min post-pharmaceutical, participants were administered a standard computerized version of the n-back task. The n-back procedure has been used extensively to measure human WM performance (Owen *et al*, 2005). Participants were required to monitor a series of letters and report when the current letter matched the letter  $n$  integers back, where  $n = 1$  (1-back) or  $n = 2$  (2-back), the latter being more difficult. The task requires continuous updating of information stores. In contrast, in the 0-back condition (which does not require manipulation of material in WM), participants responded to the appearance of a prespecified letter. Overall, the task consisted of alternating 30-s blocks of 0-back, 1-back, and 2-back conditions, and lasted 6 min in total. Within blocks, letters were displayed every 2 s for 1 s. Written instructions were read out and participants were given a practice run to demonstrate their understanding of the rules. Subjects were seated ~66 cm from a CRT monitor and instructed to report correct answers as rapidly as possible by pressing a joy-pad button with their R-index finger. Accuracy of responses and reaction times were measured and stored digitally.

### Electroencephalography

All data recording and signal processing were performed in Neuroscan 4.3. EEG activity was recorded from 63 electrode sites using a Quik-Cap system (Compumedics), with a linked mastoid reference and ground at AFz. All impedances were maintained below 10 k $\Omega$ . Additional electrodes were placed at the outer canthi to measure horizontal electrooculographic (EOG) activity (monopolar with linked mastoid reference). Vertical EOG was measured using a bipolar recording with electrodes above and below the left eye. The EEG was sampled at 2000 Hz and corrected for eye-blinks using a regression approach. The corrected EEG was epoched, using a 10% Hanning window, into 2048 ms segments (–24 to 2024 ms with respect to each n-back letter stimulus). Epochs were baseline corrected. For each of the three n-back conditions, average power within the frequency bands delta (1–3.5 Hz), theta (3.5–7 Hz), alpha (8–13 Hz), beta (14–25 Hz), low-gamma (30–40 Hz), and high-gamma (60–70 Hz) bands was calculated using Fast Fourier Transform.

For the power analysis, individual electrodes were grouped as left frontal, LF (F1, F3, F5, F7, AF3); right frontal, RF (F2, F4, F6, F8, AF4); left central, LC (C1, C3, FC1, FC3); right central, RC (C2, C4, FC2, FC4); left temporal, LT (FT7, T7, TP7, CP5, P7); right temporal, RT (FT8, T8, TP8, CP6, P8); left occipito-parietal, LOP (O1, PO5, PO3, P3, P1); and right occipito-parietal, ROP (O2, PO6, PO4, P4, P2). The mean value from each group of electrodes was used for statistical analysis. The midline electrodes FZ, CZ, and PZ were analyzed individually.

For the coherence analysis, the data were transformed to bipolar derivations. These derivations consist of pairs of neighboring electrodes at different scalp locations to eliminate the contribution of activity from a common reference to the coherence estimate. Bipolar channels were derived for left and right frontal and parietal regions (F3/F5; PO3/PO5; F4/F6; PO4/PO6). The measure of coherence used is equivalent to a Pearson's correlation performed with complex numbers. It measures the correlation (a value between 0 and 1) of EEG activity in a specific frequency band between two scalp locations. For each of the three n-back conditions, coherence measures were calculated between three prespecified inter-regions, left frontal–left parietal F3/F5–PO3/PO5, right frontal–right parietal F4/F6–PO4/PO6, and left frontal–right frontal F3/F5–F4/F6. Laplacian derivations were also derived from frontal sites over the left hemisphere (LpF3, LpF5, and LpFT7) and right hemisphere (LpF4, LpF6, and LpFT8). In Laplacian derivations, the influence of deep brain sources is minimized by referencing each site to the average of its four surrounding neighboring electrodes (see results).

### Statistical Analyses

All analyses were conducted in SPSS 15.0. Distributions were checked for normality using Kolmogorov–Smirnov statistics. Non-parametric tests were used to analyze PANSS scores, because of floor effects under placebo conditions. Thus, differences between THC and placebo sessions were assessed using Friedman's test and relationships between PANSS scores and EEG measures were analyzed using

Spearman's rho. Accuracy and speed of performance in the n-back were analyzed by repeated-measures ANOVA, with Task Difficulty (0-back, 1-back, and 2-back) and THC Treatment (placebo, THC) as within-subject factors. Relationships between accuracy/speed of processing in the most challenging (2-back) condition of the n-back and EEG measures were analyzed by Pearson's correlation coefficient.

A repeated-measures ANOVA was used to analyze EEG power in each frequency band (delta, theta, alpha, beta, low-gamma, and high-gamma). Within-subject factors were: Region (LF, RF, LC, RC, LT, RT, LOP, ROP, Fz, Cz, and Pz), Task Difficulty (0-back, 1-back, and 2-back), and THC Treatment (placebo and THC). A repeated-measures ANOVA was used to analyze EEG coherence. Factors (4) were frequency (delta, theta, alpha, beta, low-gamma, and high-gamma), inter-Region (left frontal-left parietal, right frontal-right parietal, and left frontal-right frontal), Task Difficulty (0-back, 1-back, and 2-back) and THC Treatment (placebo and THC). Separate ANOVAs were also conducted for each frequency band (delta to high-gamma), in which factors were inter-Region, Task Difficulty, and THC Treatment. Where sphericity assumptions were violated, Huynh-Feldt corrected statistics were used. *Post hoc t*-tests were carried out where appropriate.

Correlations between psychological outcomes and EEG measures were Bonferroni corrected to adjust for multiple comparisons. Otherwise significance was accepted at  $p < 0.05$ . All analyses were two-tailed.

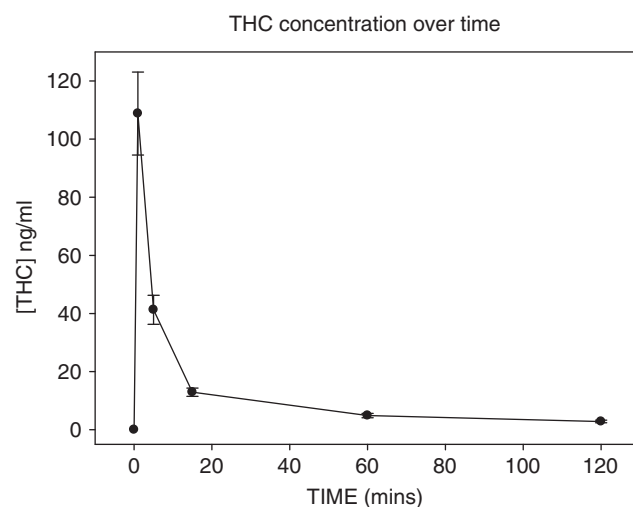
## RESULTS

Overall, 16 of 20 participants (7 males and 9 females) completed both sessions of the study. Two participants were lost to follow-up. One subject discontinued her involvement and one subject experienced short-lived panic and the session was stopped prematurely. Mean age was  $26 \pm 6$  years. Before experimental sessions, all urine drug screens were negative. Previous use of cannabis ranged from 2 to ~1000 occasions (median = 40). With regard to other drugs, 11 (of 16) had previously taken stimulants (cocaine/amphetamines), 6 had taken ecstasy, 6 had taken psychedelics (psilocybin/LSD), and there was a single case each of previous ketamine and gamma-hydroxybutyric acid. Plasma concentrations of THC over the course over the experiment are summarized in Figure 1.

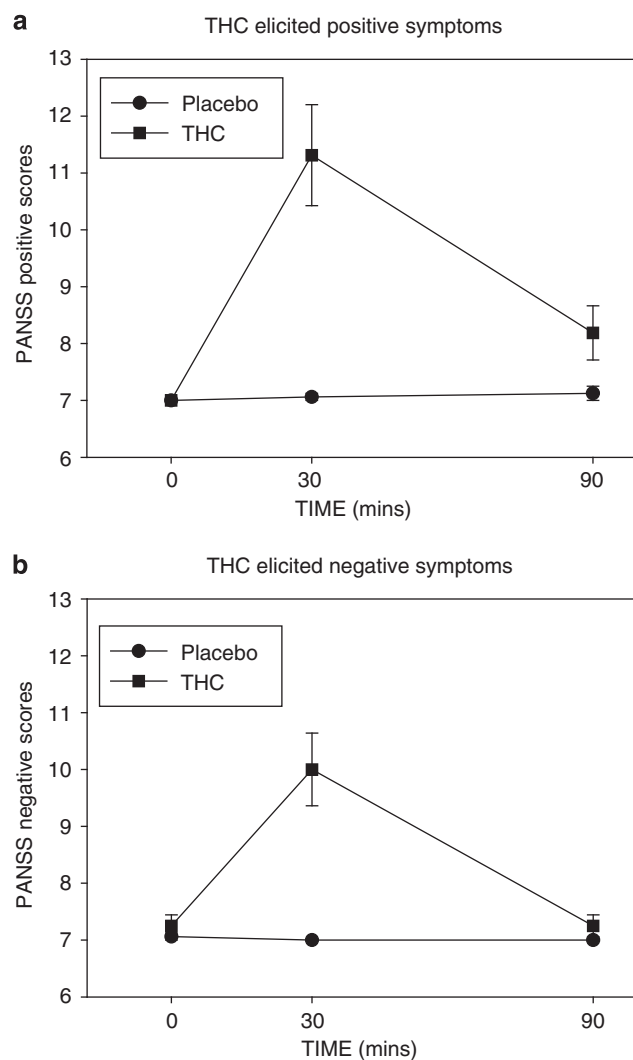
### Psychopathology and Cognitive Performance

Compared with placebo, THC increased positive (Friedman's  $\chi^2 = 63.7$ ,  $p < 0.001$ ), negative (Friedman's  $\chi^2 = 56.0$ ,  $p < 0.001$ ), and general PANSS scores (Friedman's  $\chi^2 = 36.1$ ,  $p < 0.001$ ). Increases were most pronounced at the 30-min assessment point and tended back toward baseline by 90-min (Figure 2a and b). Overall, 40% of participants showed increases in PANSS positive symptom scores of  $> 4$  points at 30-min post-injection.

There was a trend toward reduced accuracy in the n-back task following treatment with THC ( $F = 2.95$ ,  $p = 0.11$ ). Accuracy was robustly affected by Task Difficulty ( $F = 5.38$ ,  $p < 0.005$ ), with poorer performance in the 2-back condition



**Figure 1** Plasma concentrations of THC (mean  $\pm$  SEM) following the intravenous injection of THC (1.25 mg).

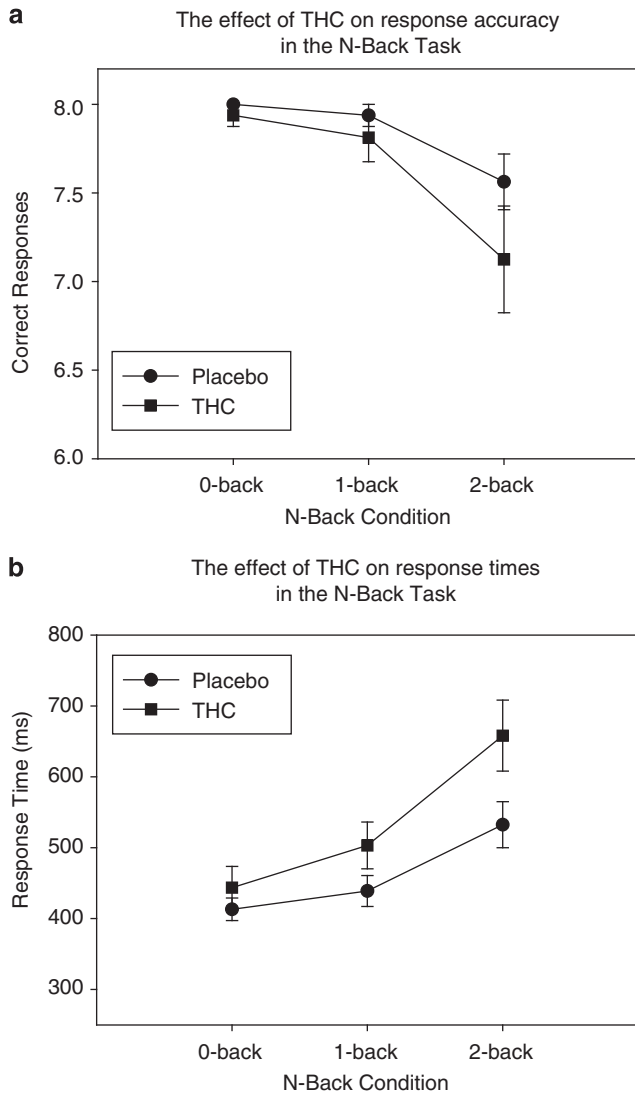


**Figure 2** (a) Positive and (b) negative psychotic symptoms (mean  $\pm$  SEM) as measured by the PANSS scale were increased from baseline (time 0 min) following the administration of intravenous THC (1.25 mg).



compared with both the 1-back ( $p < 0.05$ ) and 0-back ( $p < 0.01$ ) conditions (Figure 3a). In terms of accuracy, there was no THC Treatment  $\times$  Task Difficulty interaction.

Response times in the n-back task were slower under THC vs placebo conditions ( $F = 6.8$ ,  $p < 0.05$ ), and as Task Difficulty increased ( $F = 32.3$ ,  $p < 0.001$ ). There was an interaction between THC Treatment  $\times$  Task Difficulty, in that the effect of THC was significantly greater as the n-back became more challenging ( $F = 7.74$ ,  $p < 0.005$ ; Figure 3b).

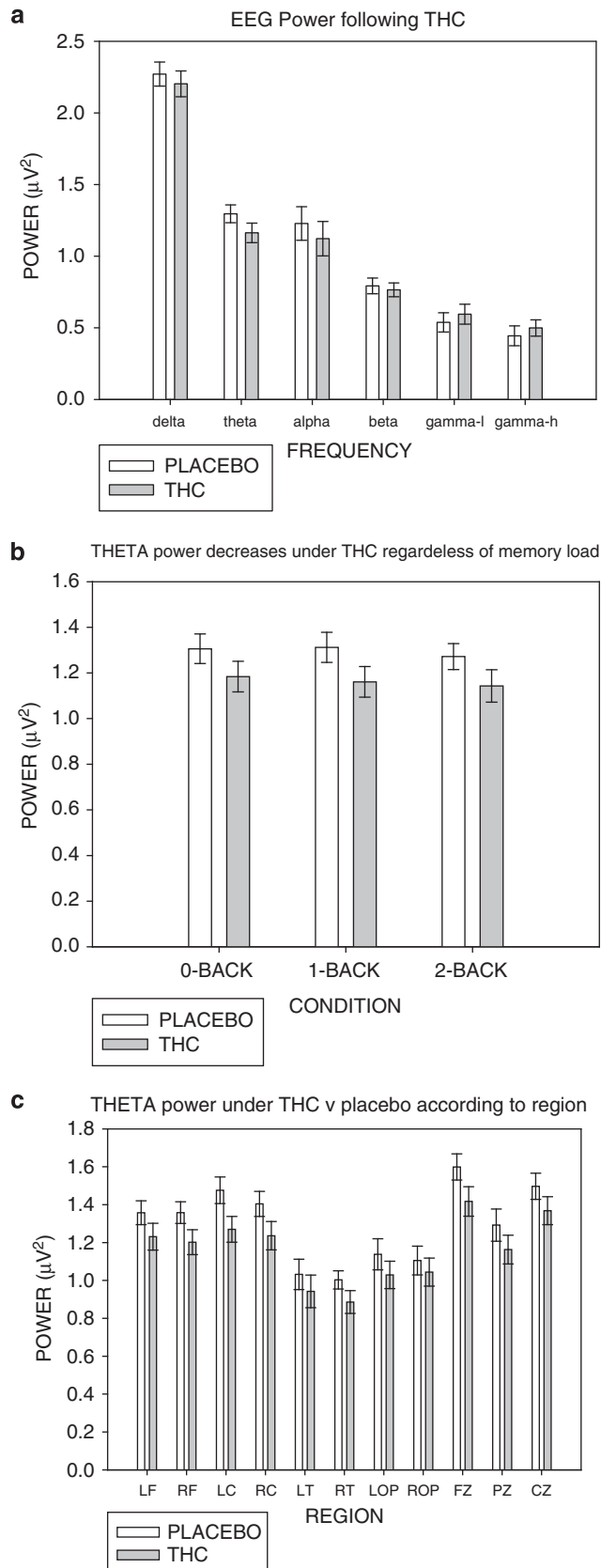


**Figure 3** (a) Accuracy and (b) reaction time in the n-back task (mean  $\pm$  SEM) under THC vs placebo conditions. (a) THC had no effect on accuracy. (b) Performance was slower under THC conditions ( $p < 0.05$ ) and showed an interaction with Task Difficulty ( $p < 0.005$ ).

**Figure 4** (a) The effect of THC at each frequency band. Compared with placebo, theta power (mean  $\pm$  SEM) was decreased by THC ( $p < 0.001$ ). Decreases or increases under THC in other frequency bands are not significant. Theta power was reduced regardless of Task Difficulty (b) or recording site (c). Left frontal, LF; right frontal, RF; left central, LC; right central, RC; left temporal, LT; right temporal, RT; left occipitoparietal, LOP; right occipitoparietal, ROP; midline frontal, FZ; midline parietal, PZ; midline central, CZ.

## Electroencephalography

**Power.** The effect of THC at each frequency band is shown in Figure 4a. THC decreased theta power ( $F = 23.5$ ,



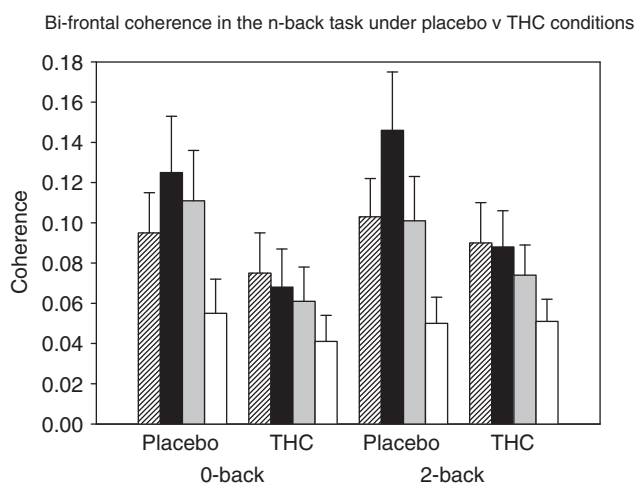
$p < 0.001$ ), regardless of Task Difficulty or Region (Figure 4b and c). There was also a trend toward decreased alpha power under THC ( $F = 3.74$ ,  $p = 0.07$ ), with no THC Treatment  $\times$  Task Difficulty or THC Treatment  $\times$  Region interactions. Power in the delta and beta bands also reduced under THC, whereas that in the low-gamma and high-gamma bands increased, although none of these effects were significant: beta ( $p = 0.45$ ), delta ( $p = 0.34$ ), low-gamma ( $p = 0.21$ ), and high-gamma ( $p = 0.21$ ).

**EEG Coherence.** There were overall effects of Region ( $F = 9.8$ ,  $p < 0.01$ ), frequency ( $F = 16.6$ ,  $p < 0.001$ ), Task Difficulty ( $F = 24.3$ ,  $p < 0.001$ ), and THC ( $F = 6.1$ ,  $p < 0.05$ ). EEG coherence was greater between bi-frontal electrodes compared with L-fronto-parietal ( $p < 0.05$ ) and R-fronto-parietal ( $p < 0.05$ ) electrode pairs. Compared with the 0-back condition, overall coherence increased under the 1-back ( $p < 0.001$ ) and 2-back conditions ( $p < 0.005$ ).

Interactive effects were region  $\times$  frequency ( $F = 4.0$ ,  $p = 0.01$ ) and frequency  $\times$  THC ( $F = 3.1$ ,  $p < 0.05$ ). There was a trend toward a three-way interaction between region, frequency, and THC Treatment ( $F = 2.0$ ,  $p = 0.09$ ).

Under placebo, bi-frontal coherence was largest in the theta band and theta coherence was greater between bi-frontal region compared with both the left ( $p = 0.01$ ) and right ( $p < 0.005$ ) fronto-parietal regions. THC selectively decreased bi-frontal coherence in the theta ( $p < 0.05$ ) and alpha ( $p < 0.05$ ) bands (Figure 5).

The observed decrease in theta coherence between bi-frontal electrodes under THC could reflect a decrease in connectivity between frontal regions in both hemispheres. However, another interpretation might be that it reflects a decrease in activity of a deep prefrontal source detected by both frontal regions. To explore this issue further, we examined theta coherence in Laplacian derivations over the left and right hemispheres to minimize the contribution from deep sources. Coherence under placebo conditions ( $0.18 \pm 0.02$ ; mean  $\pm$  SEM averaged over three frontal Laplacian sites) was reduced by



**Figure 5** Coherence between left and right prefrontal regions, under THC vs placebo, in the control (0-back) and most challenging (2-back) levels of the n-back task. Bars show coherence (mean  $\pm$  SEM) by frequency. (Diagonal stripes, delta; black, theta; grey, alpha; White, beta.) THC treatment selectively decreased coherence in the theta ( $p < 0.05$ ) and alpha ( $p < 0.05$ ) bands.

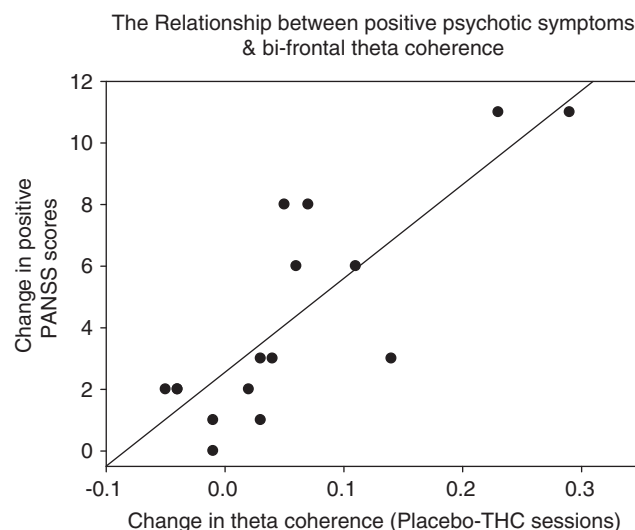
THC ( $0.11 \pm 0.02$ ) and differences emerged at the level of a strong trend ( $F = 4.0$ ,  $p = 0.08$ ). This suggests the coherence changes do not relate to activity in a deep source, but reflect true changes in bi-frontal connectivity.

## Correlations

**EEG Power and Psychopathology.** Overall, there was no correlation between change-in theta power, either globally or specifically at electrode Fz, and (1) change-in reaction time in the most challenging (2-back) level of the n-back task, (2) change-in positive PANSS scores (THC—placebo at 30 min), and (3) change-in negative PANSS scores (THC—placebo at 30 min).

**EEG Coherence and Psychopathology.** We investigated possible relationships between change-in theta and alpha coherence and (1) change-in reaction time in the most challenging (2-back) level of the n-back task, (2) change-in positive PANSS scores (THC—placebo at 30 min), and (3) change-in negative PANSS scores (THC—placebo at 30 min). As there were six comparisons in total, Bonferroni-corrected statistical significance was set at  $p < 0.008$ .

The change-in theta coherence (averaged over bi-frontal, and left and right fronto-parietal) under THC conditions was strongly associated with the change-in positive PANSS scores ( $\rho = 0.75$ ,  $p = 0.001$ ), but neither change-in negative symptoms nor change-in reaction time. The relationship between theta coherence and positive symptoms was specific for the bi-frontal region ( $\rho = 0.79$ ,  $p < 0.001$ ). Neither change-in left or change-in right fronto-parietal theta coherence was related to positive symptoms. The larger the reduction in bi-frontal theta coherence, the larger the increase in positive symptoms on the PANSS. Reduced bi-frontal theta coherence occurred at all levels of the n-back and the correlation between the decrease in theta and increase in positive symptoms survived the removal of two potential outliers ( $\rho = 0.69$ ,  $p = 0.006$ ; Figure 6).



**Figure 6** Reductions in theta coherence between left and right prefrontal regions under THC was correlated with positive psychotic symptoms ( $\rho = 0.79$ ,  $p < 0.001$ ), and survived the removal of two potential outliers ( $\rho = 0.69$ ,  $p = 0.006$ ).

There was a weaker relationship between the change-in alpha coherence and the change-in negative symptoms (averaged  $\rho = 0.57$ ,  $p = 0.02$ ), which was insufficiently robust to survive correction for multiple testing, and no relationship with positive symptoms or reaction time in the n-back.

## DISCUSSION

The major finding of the present study is that THC decreased theta coherence between bi-frontal brain regions compared with the placebo day and that the reduction in coherence was strongly associated with positive psychotic symptoms. Additional effects of THC—transient psychosis as reflected in the PANSS score, slower WM performance, and global suppression of power in the theta band—are consistent with previous reports.

### Methodological Issues—Coherence

Our measure of coherence is influenced by both the amplitude and phase of EEG activity. A high-theta coherence value indicates a linear relationship between theta amplitude in left frontal and right frontal cortices across sequential WM epochs and a consistent phase relationship. The reduction in coherence under THC indicates that the theta amplitude relationship between the two frontal sites is weaker or that theta phase varies from trial to trial. Our coherence measure does not disambiguate these two possibilities; however, a reduction in either amplitude or phase relationship points to a weakening of shared function or cross talk between the frontal sites. The coherence seems to be driven by activity in the lateral frontal cortex and not from a deep source (for example, on the medial surface of the frontal lobes), as the reduction in coherence under THC is preserved in the Laplacian data, which is sensitive to local sources but not deeper ones. The THC effects in the Laplacian data are less significant than those in the bipolar montage analysis, suggesting either that the Laplacian electrodes used were not directly above the cortical regions involved in the cross talk or that large regions of frontal cortex are involved as this reduces the sensitivity of Laplacian data.

### THC, Theta Coherence, and Psychosis

Previously there has been speculation that the pro-psychotic effects of THC stem from disruption of synchronized neural rhythms (Hajos *et al*, 2008; Sewell *et al*, 2009). The major finding here provides the first experimental support for this idea. It may be that THC elicits a 'lesion', at the molecular level that can 'push' an otherwise healthy nervous system toward acute psychosis, hastens the onset of psychotic-breakdown in those destined to develop schizophrenia and provokes acute relapse in established cases (Kuepper *et al*, 2010). The precise nature (and location) of the molecular lesion, downstream of CB<sub>1</sub>Rs is unknown. But the most likely scenario is that THC disrupts the intricacies of fast amino-acid-based neurotransmission; and in doing so, disrupts network oscillations that depend, in-part, on reciprocal glutamate and GABA-ergic connections (Buzsaki,

2006; Ford and Mathalon, 2008; Hajos *et al*, 2008; Robbe *et al*, 2006; Uhlhaas *et al*, 2008).

The findings point to the prefrontal cortex and implicate the theta band in the generation of psychotic symptoms. Reduced bi-frontal (but not fronto-parietal) coherence from placebo day levels was strongly associated with positive psychotic symptoms. This was not the case for theta power. The simplest interpretation is that acute THC-psychosis is associated with disruption in long-distance synchrony (reflected in coherence), but not with disruption of local theta rhythms (reflected in power). There is a consensus that theta oscillations are important for long-distance 'cross-talk' between brain regions (Uhlhaas and Singer, 2010; Varela *et al*, 2001). The findings here are broadly in keeping with the disconnection hypothesis of schizophrenia, in which impaired functional connectivity between brain regions underlies psychotic symptoms (Stephan *et al*, 2009). Some caution is required in attributing the pro-psychotic effects of THC to a direct action within the frontal cortices. It is likely that, in the present study, theta oscillations within limbic regions were also disrupted by THC (Hajos *et al*, 2008; Robbe *et al*, 2006). Thus, an apparent cortical lesion might only be a marker for a cortico-limbic lesion, which is 'closer' to the pathophysiology of THC. For example, Df(16)A<sup>+/-</sup> mice (which mimic one of the largest genetic risk-factors for schizophrenia, a microdeletion on human chromosome 22q11.2), show reduced phase-locking of prefrontal cells to hippocampal theta rhythms and reduced coherence of prefrontal and hippocampal local field potentials (Sigurdsson *et al*, 2010).

It is unclear whether the link between positive psychotic symptoms and decreased bi-frontal theta coherence reported here is specific to THC and WM tasks or constitutes a more generally applicable biomarker for positive psychotic symptoms whatever their context. We did not find a robust association between EEG coherence and negative symptoms, suggesting that these symptoms may be related to a different mechanism or disconnection between different areas.

The link between positive symptoms and coherence was specific to the theta band. It is possible that the gamma band would also have been linked to psychotic symptoms. It is known that gamma oscillations 'nest' within slower oscillations; thus, the power of gamma rhythms rises and falls on a slower theta oscillation (Canolty *et al*, 2006). However, clear separation of neural and muscle-derived gamma in the human scalp-recorded EEG can be difficult, although algorithms have been developed to permit identification of neural gamma in humans (Nottage, 2010). It is possible that changes in the gamma band in addition to theta will be detected using these novel methods. Studies in schizophrenic patients have reported decreased power of frontal theta oscillations during performance of WM tasks (Haenschel *et al*, 2009; Schmiedt *et al*, 2005). Ford *et al* (2002) compared the EEG of speech production vs listening, in patients and controls. Speech production was associated with increased coherence across classical left hemisphere language regions within the theta band, in healthy controls but not in schizophrenic patients. The authors concluded that reduced fronto-temporal functional connectivity in schizophrenia could lead to the attribution of self-generated speech to an external source, auditory

hallucinations. Our subjects did not experience auditory hallucinations and our findings suggest that other classes of psychotic symptom might be linked to reductions in bi-frontal coherence.

### THC, Theta Oscillations, and Cognition

Under THC, there were decreases in theta power and theta coherence regardless of the level of difficulty in the n-back task. The reduction in theta power is unlikely to relate to a non-specific decrease in arousal as drowsiness and the transition to sleep has the opposite effect, increasing theta activity. All three n-back levels differed from the 'at-rest' state in placing explicit demands on attention. Generally, the impact of THC on n-back performance was relatively subtle. As demands on WM increased, performance was significantly slower, but accuracy was maintained. Indeed, the majority of participants continued to 'achieve' 100% success, even on the most challenging level. In agreement with previous findings, THC-elicited deficits in WM showed no relationship with acute psychosis (Morrison *et al*, 2009). Additionally, in the present data set, we found no relationship between WM deficits and the decreases in EEG power. The latter finding is in contrast with the recent report of Bocker *et al* (2010), who found greater the reduction in theta power under THC, greater the slowing of responses (but not reduction in accuracy) in a WM task (Bocker *et al*, 2010). It also has been reported that fronto-parietal coherence (specifically within the theta band) increases during WM performance (Sarnthein *et al*, 1998). This effect was not observed in the present study. One possibility is that the n-back task used here was insufficiently challenging.

### The Neurophysiology of THC

Recently, cannabinoid agonists have emerged as a 'tool' for the study of brain network dynamics and for the study of psychotic mental states (Buzsaki, 2006; Sewell *et al*, 2009). In the former case, CB<sub>1</sub> agonists are unique in that they can disrupt network synchrony while preserving the firing-rates of individual pyramidal and GABA-ergic interneurons (Buzsaki, 2006; Robbe *et al*, 2006). Comparing different drug-models of psychosis, CB<sub>1</sub> agonists can elicit a psychotic reaction in otherwise healthy controls after a single exposure, in contrast to stimulants (amphetamine/cocaine) where repeated use is a prerequisite. And repeated use of cannabis (especially forms high in THC-content) is a risk factor for the genesis of schizophrenia, in contrast to ketamine where no association has as yet been found.

The eCBs are key components in plasticity and a rapidly developing field is the overlap between neural oscillations and plasticity. The role of theta oscillations in the generation of hippocampal long-term potentiation has long been appreciated (Huerta and Lisman, 1993). But more recently it has become apparent that gamma rhythms and spike-timing dependent plasticity occur within the same, critical time-frame (tens of milliseconds) suggestive of mechanistic links between the two phenomena (Buzsaki, 2006; Uhlhaas and Singer, 2010). Spike-timing dependent long-term depression in the cortex is implemented by

retrograde eCB signalling (Chevalleyre *et al*, 2006). And animal work has shown that THC disrupts network oscillations and network plasticity simultaneously (Robbe *et al*, 2006). Potentially, this could offer insight into how THC can precipitate an acute, reversible psychosis (disruption of oscillations) and a chronic psychotic illness (additional disruption of plasticity).

### Strengths and Limitations

A weakness of the current study is that only one dose of THC was used. The sample size is also small for teasing out interactions, but typical for studies of this type. There are two main strengths. Experimentally induced psychoses permit the testing of healthy participants before, during, and after administration of a pro-psychotic drug, and intra-individual comparisons. We also took advantage of pure synthetic preparations of THC. Plant derived material contains further cannabinoid molecules such as cannabidiol, which counteracts the pro-psychotic effects of THC (Bhattacharyya *et al*, 2010) and tetrahydrocannabivarin, an antagonist at CB<sub>1</sub>Rs (Pertwee *et al*, 2008).

### Conclusion

Global theta power was reduced by THC—without any manifest psychopathological consequences. In contrast, there was a strong and specific association between THC-induced positive psychotic symptoms and reduced bi-frontal theta coherence. Impaired functional 'cross-talk' between the frontal lobes in the theta band might account for the pro-psychotic effects of THC/cannabis. Whether this is also true of psychotic symptoms more generally is a question for further study.

### ACKNOWLEDGEMENTS

This study was supported by the MRC (UK) and the Beckley Foundation.

### DISCLOSURE

The authors declare no conflict of interest.

### REFERENCES

- Arseneault L, Cannon M, Witton J, Murray RM (2004). Causal association between cannabis and psychosis: examination of the evidence. *Br J Psychiatry* 184: 110–117.
- Bocker KB, Hunault CC, Gerritsen J, Kruidenier M, Mensinga TT, Kenemans JL (2010). Cannabinoid modulations of resting state EEG theta power and working memory are correlated in humans. *J Cogn Neurosci* 22: 1906–1916.
- Bodor AL, Katona I, Nyiri G, Mackie K, Ledent C, Hajos N *et al* (2005). Endocannabinoid signaling in rat somatosensory cortex: laminar differences and involvement of specific interneuron types. *J Neurosci* 25: 6845–6856.
- Bhattacharyya S, Morrison PD, Fusar-Poli P, Martin-Santos R, Borgwardt S, Winton-Brown T *et al* (2010). Opposite effects of delta-9-tetrahydrocannabinol and cannabidiol on human brain function and psychopathology. *Neuropsychopharmacology* 35: 764–774.



- Buzsaki G (2006). *Rhythms of The Brain*. Oxford University Press: New York.
- Buzsaki G, Draguhn A (2004). Neuronal oscillations in cortical networks. *Science* **304**: 1926–1929.
- Canolty RT, Edwards E, Dalal SS, Soltani M, Nagarajan SS, Kirsch HE et al (2006). High gamma power is phase-locked to theta oscillations in human neocortex. *Science* **313**: 1626–1628.
- Chevalere V, Takahashi KA, Castillo PE (2006). Endocannabinoid-mediated synaptic plasticity in the CNS. *Annu Rev Neurosci* **29**: 37–76.
- D'Souza DC, Abi-Saab WM, Madonick S, Forselius-Bielen K, Doersch A, Braley G et al (2005). Delta-9-tetrahydrocannabinol effects in schizophrenia: implications for cognition, psychosis, and addiction. *Biol Psychiatry* **57**: 594–608.
- D'Souza DC, Perry E, MacDougall L, Ammerman Y, Cooper T, Wu YT et al (2004). The psychotomimetic effects of intravenous delta-9-tetrahydrocannabinol in healthy individuals: implications for psychosis. *Neuropsychopharmacology* **29**: 1558–1572.
- Egan SM, Lewis DA (2007). Immunocytochemical distribution of the cannabinoid CB1 receptor in the primate neocortex: a regional and laminar analysis. *Cereb Cortex* **17**: 175–191.
- Egan SM, Melchitzky DS, Sesack SR, Fish KN, Lewis DA (2010). Relationship of cannabinoid CB1 receptor and cholecystokinin immunoreactivity in monkey dorsolateral prefrontal cortex. *Neuroscience* **169**: 1651–1661.
- Ford JM, Mathalon DH (2008). Neural synchrony in schizophrenia. *Schizophr Bull* **34**: 904–906.
- Ford JM, Mathalon DH, Whitfield S, Faustman WO, Roth WT (2002). Reduced communication between frontal and temporal lobes during talking in schizophrenia. *Biol Psychiatry* **21**: 485–492.
- Freund TF, Katona I, Piomelli D (2003). Role of endogenous cannabinoids in synaptic signaling. *Physiol Rev* **83**: 1017–1066.
- Glass M, Dragunow M, Faull RL (1997). Cannabinoid receptors in the human brain: a detailed anatomical and quantitative autoradiographic study in the fetal, neonatal and adult human brain. *Neuroscience* **77**: 299–318.
- Goldberg DP, Blackwell B (1970). Psychiatric illness in general practice. A detailed study using a new method of case identification. *BMJ* **1**: 439–443.
- Haenschel C, Bittner RA, Waltz J, Haertling F, Wibral M, Singer W et al (2009). Cortical oscillatory activity is critical for working memory as revealed by deficits in early-onset schizophrenia. *J Neurosci* **29**: 9481–9489.
- Hajos M, Hoffmann WE, Kocsis B (2008). Activation of cannabinoid-1 receptors disrupts sensory gating and neuronal oscillation: relevance to schizophrenia. *Biol Psychiatry* **63**: 1075–1083.
- Herkenham M, Lynn AB, Johnson MR, Melvin LS, de Costa BR, Rice KC (1991). Characterization and localization of cannabinoid receptors in rat brain: a quantitative *in vitro* autoradiographic study. *J Neurosci* **11**: 563–583.
- Hill EL, Gallopin T, Ferezou I, Cauli B, Rossier J, Schweitzer P et al (2007). Functional CB1 receptors are broadly expressed in neocortical GABAergic and glutamatergic neurons. *J Neurophysiol* **97**: 2580–2589.
- Howlett AC, Barth F, Bonner TI, Cabral G, Casellas P, Devane WA et al (2002). International union of pharmacology. XXVII. Classification of cannabinoid receptors. *Pharmacol Rev* **54**: 161–202.
- Huerta PT, Lisman JE (1993). Heightened synaptic plasticity of hippocampal CA1 neurons during a cholinergically induced rhythmic state. *Nature* **364**: 723–725.
- Ilan AB, Smith ME, Gevins A (2004). Effects of marijuana on neurophysiological signals of working and episodic memory. *Psychopharmacology (Berl)* **176**: 214–222.
- Kay SR, Fiszbein A, Opler LA (1987). The positive and negative syndrome scale (PANSS) for schizophrenia. *Schizophr Bull* **13**: 261–276.
- Kopell N, Ermentrout GB, Whittington MA, Traub RD (2000). Gamma rhythms and beta rhythms have different synchronization properties. *Proc Natl Acad Sci USA* **97**: 1867–1872.
- Kuepper R, Morrison PD, van Os J, Murray RM, Kenis G, Henquet C (2010). Does dopamine mediate the psychosis-inducing effects of cannabis? A review and integration of findings across disciplines. *Schizophr Res* **121**: 107–117.
- Mechoulam R, Shani A, Edery H, Grunfeld Y (1970). Chemical basis of hashish activity. *Science* **169**: 611–612.
- Moore TH, Zammit S, Lingford-Hughes A, Barnes TR, Jones PB, Burke M et al (2007). Cannabis use and risk of psychotic or affective mental health outcomes: a systematic review. *Lancet* **370**: 319–328.
- Morrison PD, Zois V, McKeown DA, Lee TD, Holt DW, Powell JF et al (2009). The acute effects of synthetic intravenous Delta9-tetrahydrocannabinol on psychosis, mood and cognitive functioning. *Psychol Med* **39**: 1607–1616.
- Murray RM, Morrison PD, Henquet C, Di Forti M (2007). Cannabis, the mind and society: the hash realities. *Nat Rev Neurosci* **8**: 885–895.
- Naef M, Russmann S, Petersen-Felix S, Brenneisen R (2004). Development and pharmacokinetic characterization of pulmonary and intravenous delta-9-tetrahydrocannabinol (THC) in humans. *J Pharm Sci* **93**: 1176–1184.
- Nottage JF (2010). Uncovering gamma in visual tasks. *Brain Topogr* **23**: 58–71.
- Owen AM, McMillan KM, Laird AR, Bullmore E (2005). N-back working memory paradigm: a meta-analysis of normative functional neuroimaging studies. *Hum Brain Mapp* **25**: 46–59.
- Pertwee RG (2008). The diverse CB1 and CB2 receptor pharmacology of three plant cannabinoids: delta9-tetrahydrocannabinol, cannabidiol and delta9-tetrahydrocannabivarin. *Br J Pharmacol* **153**: 199–215.
- Piomelli D (2003). The molecular logic of endocannabinoid signalling. *Nat Rev Neurosci* **4**: 873–884.
- Ranganathan M, D'Souza DC (2006). The acute effects of cannabinoids on memory in humans: a review. *Psychopharmacology (Berl)* **188**: 425–444.
- Robbe D, Montgomery SM, Thome A, Rueda-Orozco PE, McNaughton BL, Buzsaki G (2006). Cannabinoids reveal importance of spike timing coordination in hippocampal function. *Nat Neurosci* **9**: 1526–1533.
- Rodriguez E, George N, Lachaux JP, Martinerie J, Renault B, Varela FJ (1999). Perception's shadow: long-distance synchronization of human brain activity. *Nature* **397**: 430–433.
- Sarnthein J, Petsche H, Rappelsberger P, Shaw GL, von Stein A (1998). Synchronization between prefrontal and posterior association cortex during human working memory. *Proc Natl Acad Sci USA* **95**: 7092–7096.
- Schmiedt C, Brand A, Hildebrandt H, Basar-Eroglu C (2005). Event-related theta oscillations during working memory tasks in patients with schizophrenia and healthy controls. *Brain Res Cogn Brain Res* **25**: 936–947.
- Sewell RA, Ranganathan M, D'Souza DC (2009). Cannabinoids and psychosis. *Int Rev Psychiatry* **21**: 152–162.
- Sigurdsson T, Stark KL, Karayiorgou M, Gogos JA, Gordon JA (2010). Impaired hippocampal-prefrontal synchrony in a genetic mouse model of schizophrenia. *Nature* **464**: 763–767.
- Stephan KE, Friston KJ, Frith CD (2009). Dysconnection in schizophrenia: from abnormal synaptic plasticity to failures of self-monitoring. *Schizophr Bull* **35**: 509–527.
- Uhlhaas PJ, Haenschel C, Nikolic D, Singer W (2008). The role of oscillations and synchrony in cortical networks and their putative relevance for the pathophysiology of schizophrenia. *Schizophr Bull* **34**: 927–943.

- Uhlhaas PJ, Pipa G, Lima B, Melloni L, Neuenschwander S, Nikolic D *et al* (2009). Neural synchrony in cortical networks: history, concept and current status. *Front Integr Neurosci* 3: 17.
- Uhlhaas PJ, Singer W (2010). Abnormal neural oscillations and synchrony in schizophrenia. *Nat Rev Neurosci* 11: 100–113.
- Varela F, Lachaux JP, Rodriguez E, Martinerie J (2001). The brainweb: phase synchronization and large-scale integration. *Nat Rev Neurosci* 2: 229–239.
- von Stein A, Chiang C, Konig P (2000). Top-down processing mediated by interareal synchronization. *Proc Natl Acad Sci USA* 97: 14748–14753.