

CORRIGENDUM **OPEN**

Corrigendum: Pathway on demand: automated reconstruction of human signaling networks

Anna Ritz, Christopher L Poirel, Allison N Tegge, Nicholas Sharp, Kelsey Simmons, Allison Powell, Shiv D Kale and TM Murali

npj Systems Biology and Applications (2016) **2**, 16026; doi:10.1038/npjsba.2016.26; published online 17 November 2016

Correction to: *npj Systems Biology and Applications* (2016) **2**, 16002; doi:10.1038/npjsba.2016.2; published online 3 March 2016

After online publication of this article, the authors noticed an error in the input files used for running the Prize Collecting Steiner Forest algorithm for Figure 2 (panels 2(a) and 2(b)) and Supplementary Figure S1 in the Supplementary Information. Consequently, one sentence in the

Supplementary Information in section 2 (Algorithms for Comparison) needs to be altered.

With publication of this corrigendum, rectified Supplementary Information including corrected Supplementary Figure S1 has now been published, whereas the corrected version of Figure 2 is provided here. The authors apologize for any inconvenience caused.

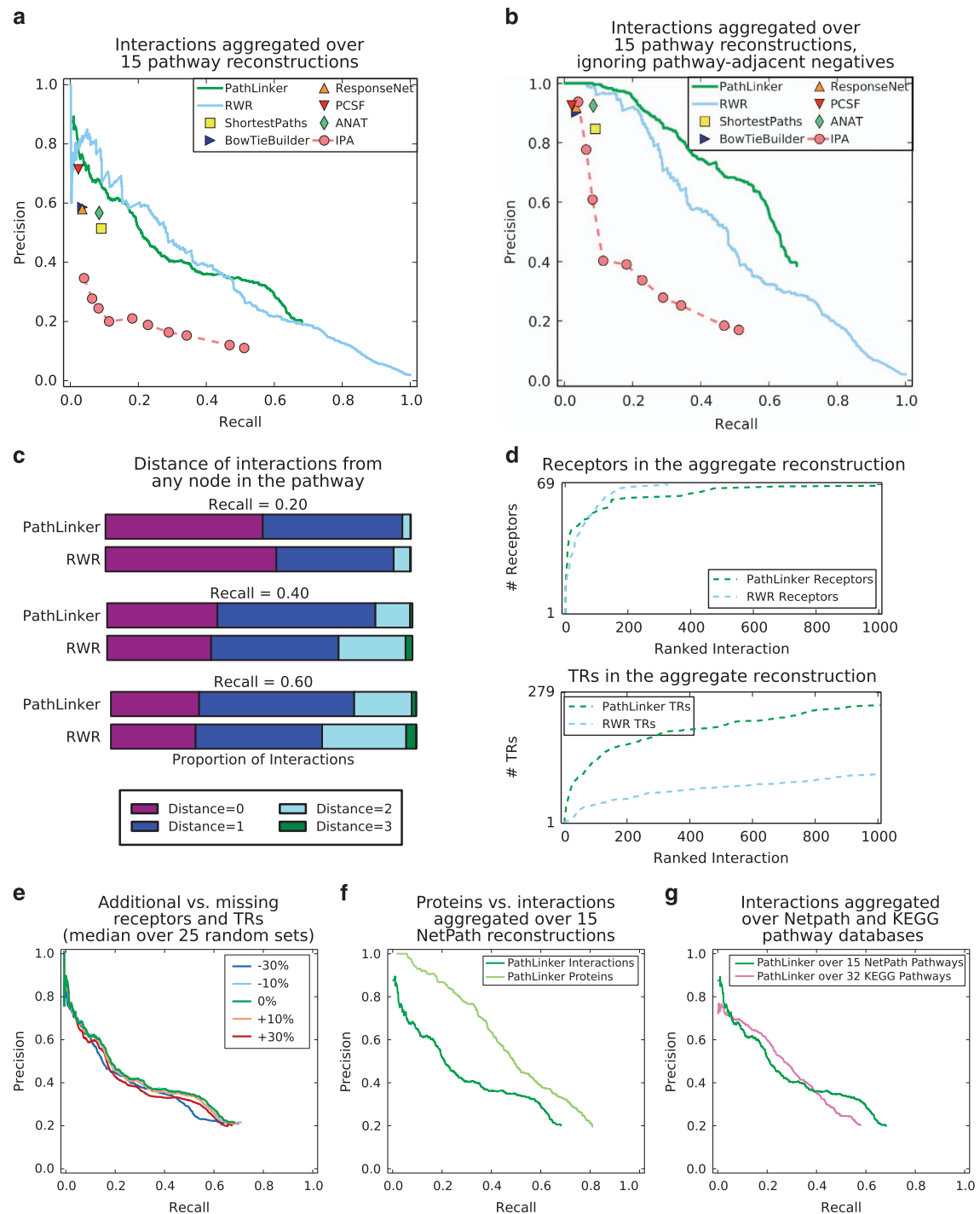


Figure 2



This work is licensed under a Creative Commons Attribution 4.0 International License. The images or other third party material in this article are included in the article's Creative Commons license, unless indicated otherwise in the credit line; if the material is not included under the Creative Commons license, users will need to obtain permission from the license holder to reproduce the material. To view a copy of this license, visit <http://creativecommons.org/licenses/by/4.0/>