

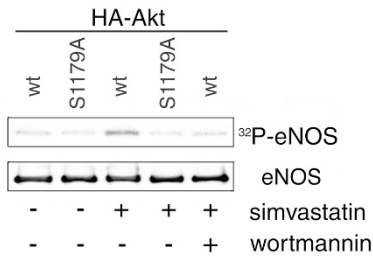
## ERRATA

**The HMG-CoA reductase inhibitor simvastatin activates the protein kinase Akt and promotes angiogenesis in normocholesterolemic animals.**

YASUKO KUREISHI, ZHENGYU LUO, ICHIRO SHIOJIMA, ANN BIALIK, DAVID FULTON, DAVID J. LEFER, WILLIAM C. SESSA &amp; KENNETH WALSH

*Nature Med.* **6**, 1004-1010 (2000).

On page 1006, the labeling for Fig. 3c was incorrect. The correct labeling for Fig. 3c is presented here.



We regret this error.

**Efficient detection and immunomagnetic sorting of specific T cells using MHC class I/peptide multimers with reduced CD8 binding.**

MARIE BODINIER, MARIE-ALIX PEYRAT, CLAIRE TOURNAY, FRANCOIS DAVODEAU, FRANCOIS ROMAGNE, MARC BONNEVILLE &amp; FRANCOIS LANG

*Nature Med.* **6**, 707-710 (2000).

The pp65 epitope was described as the decamer NLVPMVATVQ when in fact the nonamer NLVPMVATV was used to make the tetramer and test the sorted populations.

We regret this error.

## CORRECTION

**Induction of a non-encephalitogenic type 2 T helper-cell autoimmune response in multiple sclerosis after administration of an altered peptide ligand in a placebo-controlled, randomized phase II trial.**

LUDWIG KAPPOS, GIANCARLO COMI, HILLEL PANITCH, JOEL OGER, JACK ANTEL, PAUL CONLON, LAWRENCE STEINMAN &amp; THE ALTERED PEPTIDE LIGAND IN RELAPSING MS STUDY GROUP\*

*Nature Med.* **6**, 1176-1182 (2000)

The following individuals were inadvertently excluded from the list of authors in the Altered Peptide Ligand in Relapsing MS Study Group

CHRISTIAN CONFAVREUX, SANDRINE BLANC &amp; JEAN-CLAUDE FROMENT

Hopital Neurologique, Service de Neurologie A, BP Lyon Montchat, 69394 LYON Cedex 3.