

ARTICLE

Received 11 Sep 2014 | Accepted 27 Mar 2015 | Published 7 May 2015

DOI: 10.1038/ncomms8068

I κ B β enhances the generation of the low-affinity NF κ B/RelA homodimer

Rachel Tsui^{1,2,3}, Jeffrey D. Kearns^{1,3,†}, Candace Lynch^{1,3,†}, Don Vu³, Kim A. Ngo^{1,2,3}, Soumen Basak^{1,3,†}, Gourisankar Ghosh³ & Alexander Hoffmann^{1,2,3,4}

The NF κ B family of dimeric transcription factors regulate inflammatory and immune responses. While the dynamic control of NF κ B dimer activity via the I κ B–NF κ B signalling module is well understood, there is little information on how specific dimer repertoires are generated from Rel family polypeptides. Here we report the iterative construction—guided by *in vitro* and *in vivo* experimentation—of a mathematical model of the Rel–NF κ B generation module. Our study reveals that I κ B β has essential functions within the Rel–NF κ B generation module, specifically for the RelA:RelA homodimer, which controls a subset of NF κ B target genes. Our findings revise the current dogma of the three classical, functionally related I κ B proteins by distinguishing between a positive ‘licensing’ factor (I κ B β) that contributes to determining the available NF κ B dimer repertoire in a cell’s steady state, and negative feedback regulators (I κ B α and - ϵ) that determine the duration and dynamics of the cellular response to an inflammatory stimulus.

¹Signaling Systems Laboratory, University of California, San Diego, 9500 Gilman Dr M/C 0375, La Jolla, California, 92093-0375. ²The San Diego Center for Systems Biology, University of California, San Diego, 9500 Gilman Dr M/C 0375, La Jolla, California, 92093-0375. ³Department of Chemistry and Biochemistry, University of California, San Diego, 9500 Gilman Dr M/C 0375, La Jolla, California, 92093-0375. ⁴Department of Microbiology, Immunology and Molecular Genetics (MIMG), Institute for Quantitative and Computational Biosciences (QCB), University of California, Los Angeles, California, 90095. [†]Present address: Merrimack Pharmaceuticals, Cambridge, MA 02139 (J.D.K.); The Scripps Research Institute, La Jolla, California 92037, USA (C.L.); Systems Immunology Laboratory, National Institute of Immunology, Aruna Asaf Ali Marg, New Delhi 110067, India (S.B.). Correspondence and requests for materials should be addressed to A.H. (email: ahoffmann@ucla.edu).

The NF κ B family of dimeric transcription factors are known to control the development, maturation and responses of the immune system comprising diverse cell types. Resting, unstimulated cells contain a latent pool of NF κ B dimers in the cytosol that are stoichiometrically associated with their inhibitors, the I κ Bs^{1,2}. NF κ B transcription factors are produced by homo- or heterodimerization from a pool of five Rel homology domain-containing proteins (RelA, RelB, cRel, p50 and p52). The I κ B family comprises several isoforms including the classical I κ B α , I κ B β , I κ B ϵ proteins and the I κ B γ and I κ B δ activities contained within the higher molecular weight I κ Bsome³. Combinatorial dimerization and I κ B–NF κ B interactions are hallmarks of the I κ B–NF κ B signalling system.

The coordinated functions of I κ B proteins in controlling the dynamics of NF κ B activity have been studied systematically using a combined experimental and mathematical modelling approach. Specifically, mathematical modelling recapitulates the key mechanisms, such as stimulus-responsive, I κ B kinase (IKK)-dependent degradation of I κ Bs, release of nuclear NF κ B DNA-binding activity, as well as subsequent attenuation via the negative feedback regulators I κ B α , I κ B ϵ , A20 and I κ B δ (ref. 4). Interestingly, these studies did not identify a critical function for I κ B β , and I κ B β -deficient mice and cells show attenuated, not increased inflammatory responses⁵.

In contrast, little recent progress has been reported on how NF κ B dimers are generated. Early studies led to an appreciation that the NF κ B transcription factor family consists of up to 15 possible dimers, and that different dimers are detectable in different cell types¹. In fact, the NF κ B dimer repertoire changes dramatically during cell differentiation; for example, B-cell lines with early lineage markers contain primarily RelA:p50, while those with later lineage markers contain primarily cRel:p50 dimers⁶. In murine embryonic fibroblasts (MEFs), the RelA:p50 heterodimer and the RelA:RelA homodimer have been observed and shown to be responsible for the expression of distinct target genes⁷. Indeed, despite its much lower abundance in fibroblasts, the RelA:RelA homodimer was shown to have nonredundant functions for a subset of NF κ B target genes, with the specificity being mediated by κ B-site DNA sequences as well as transcriptional co-activators⁸. However, surprisingly little is known about the mechanisms that control the formation of these distinct NF κ B dimers that are critical for mediating gene-specific expression control. Indeed, we presently lack a quantitative understanding of the most fundamental processes of monomer synthesis and subsequent dimer formation.

Here we have employed mathematical modelling and experimental approaches iteratively to study the mechanisms that control the fibroblast-specific NF κ B dimer repertoire. Guided by a model based on first principles of protein–protein interactions, and using *in vitro* biophysical interaction measurement, we found that we can only account for the *in vivo* observations of low-affinity dimers when we considered additional mechanisms. Specifically, combined experimental and computational studies revealed that I κ B β functions as a positive regulator within the Rel–NF κ B dimer generation module, and is essential for the formation of RelA:RelA homodimers. In contrast, I κ B α is the key regulator of the dynamics of NF κ B activity, not only of RelA:p50 but also of RelA:RelA. We conclude that the classical I κ Bs actually fall into two classes; whereas I κ B α and ϵ primarily function within the I κ B–NF κ B signalling module that is responsive to inflammatory stimuli, I κ B β primarily functions within the Rel–NF κ B dimer generation module. The resulting model not only recapitulates experimental observations, but also explains the contrasting phenotypes of mice deficient for each of the classical I κ Bs.

Results

NF κ B dimerization affinities and monomer competition. To address the molecular basis for the generation of a MEF-specific repertoire of NF κ B dimers within the so-called ‘Rel–NF κ B dimer generation module’, we first considered the fundamental principles pertaining to the generation of homo- and heterodimers from the classical NF κ B proteins p50 (50) and RelA (A), which are present in all differentiated human cells, and which show distinct gene-expression specificities^{7,8}. Dimer abundance may be thought of as a function of monomer synthesis (m_1 , m_2) and degradation (m_{-1} , m_{-2}), and combinatorial dimer association (d_1 , d_2 , d_3) and dissociation (d_{-1} , d_{-2} , d_{-3}) rate constants (Fig. 1a, Supplementary Table 1, Supplementary Note 1). As RNAseq data show very similar absolute abundances of the RelA and p50-encoding mRNAs in wild-type MEFs (Supplementary Fig. 1a), the synthesis rates of the protein monomers are assumed to be equal in the model. As Rel proteins are obligate dimers, monomers are incompletely folded and more rapidly degraded *in vivo* than when dimerized (dd_{-1} , dd_{-2} , dd_{-3})^{9,10}.

Dimerization affinities are the key determinants of cellular homo- and heterodimer abundances. We simulated the abundance of RelA:RelA (A:A) and RelA:p50 (A:50) dimer as a function of those dimer affinities keeping the p50:p50 dimer affinity constant at 30 nM (Fig. 1b), 3 and 300 nM (Supplementary Fig. 1b). Whereas p50:p50 dimerization affinity did not affect A:A or A:50 abundances over that range, the simulations do illustrate an interdependence between A:A and A:50 formation, whereby p50 competes for RelA monomers and may thus inhibit A:A generation. To test whether monomer competition occurs in cells, we compared *nfkbl*^{-/-} (which lack p50) and wild-type MEFs and found an increase in the abundance of the A:A homodimers. These data support the concept that monomer competition is physiologically relevant and tends to diminish the abundances of weaker affinity dimers (Fig. 1c–e).

To parameterize the model, we next measured dimer affinities with biophysical techniques. Homodimer affinities were measured by analytical ultracentrifugation using purified recombinant RelA and p50 dimerization domains (Supplementary Fig. 1c). The heterodimer affinity was deduced from quantitative gel filtration experiments that provided the ratios of dimer abundances (Supplementary Fig. 1d–f). We found remarkably disparate affinities: whereas the interactions by p50 proteins were found within the expected range (5–40 nM), the A:A homodimer affinity was in the μ M range (Fig. 2a). Employing these rate constants in the kinetic model resulted in the prediction that the A:A homodimers would have exceedingly low abundance (<4% of total RelA-containing dimers) because of a weak A:A affinity and the above-described monomer competition. However, testing this prediction experimentally, we found that A:A homodimers were readily detectable in cells amounting to about a quarter of tumour-necrosis factor (TNF)-inducible NF κ B activities (Fig. 2b). Thus, the mismatch between model prediction and experimental results suggested that there might be additional mechanisms controlling dimer abundance that are not included in this version of the kinetic model.

Interaction affinities between I κ B isoforms and NF κ B dimers.

Given that I κ Bs associate along a large dimerization interface¹¹, and NF κ Bs interacting with I κ Bs protect the latter from degradation^{12–14}, we considered the possibility that I κ Bs may stabilize RelA-containing NF κ B dimers. (Classical I κ Bs do not interact with p50:p50 (ref. 15).) To test this idea, we extended the mathematical model by including I κ B synthesis (i_i) and degradation (i_{-i}) and its interaction with A:A homodimers and

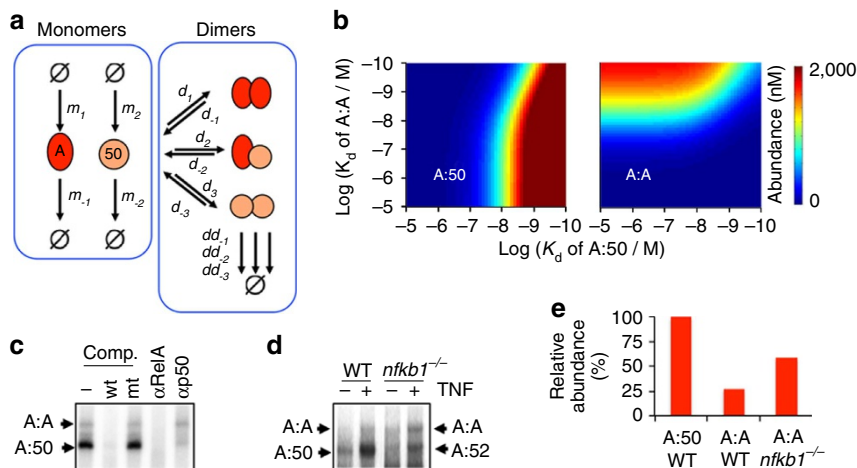


Figure 1 | Monomer competition reduces the abundance of the RelA homodimer. (a) A schematic of a simple model depicting the dimerization of NFκB RelA and p50 polypeptides. m_1 and m_2 are synthesis rate constants, m_{-1} and m_{-2} are degradation rate constants. d_1 , d_2 and d_3 are dimer association rate constants, while d_{-1} , d_{-2} and d_{-3} are dimer dissociation rate constants. dd_{-1} , dd_{-2} and dd_{-3} are dimer degradation rate constants. (b) Heat maps of protein abundances of A:A and A:50 dimers computationally simulated as a function of the dimer affinities (Kd). These were generated by the model schematized in a. (c) Electrophoretic mobility shift assays (EMSA) with nuclear extracts prepared from TNF-stimulated (30 min) wild-type MEFs. The identity of the indicated DNA-protein complexes were confirmed using competition (comp.) with a 100-fold excess of unlabelled double-stranded oligonucleotide that either contains the wild-type (wt) or mutant (mt) κB site sequence. The RelA and p50 antibodies (α-RelA and α-p50) are used in shift-ablation studies to confirm that the identity of the A:A-DNA and A:50-DNA complexes. (d) EMSA with nuclear extracts prepared from TNF-stimulated (30 min) wild-type and *nfκb1*^{-/-} MEFs. (e) Bar graph comparison of the abundances of A:A NFκB dimers wild-type and *nfκb1*^{-/-} relative to the wild-type A:50 bands (100%) from d.

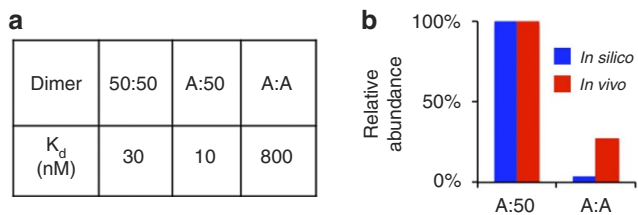


Figure 2 | Biophysical kinetic model underestimates the abundance of the RelA homodimer. (a) Summary table of dimer affinities as measured with AUC and quantitative gel-filtration analysis of purified recombinant proteins (Supplementary Fig. 1b-e). The A:A homodimer affinity is lower than those of p50-containing dimers. (b) The bar graph is a quantitation from Fig. 1 showing a comparison of model predicted (blue) and experimentally measured (red) relative abundances of A:A and A:50 dimers.

A:50 heterodimers (di_1 , di_{-1} , di_2 , di_{-2} ; Fig. 3a, Supplementary Table 2, Supplementary Note 2). In the resulting model, NFκB dimer abundances are then also a function of IκB abundances and the interaction affinities between NFκB dimers and IκB proteins. These interactions are thought to be tight;^{12,16,17} however, systematic measurements using biophysical methods are hampered by the challenge of expressing and purifying full-length recombinant proteins that are not fully folded in the apo-form and have a tendency to aggregate.

To address this challenge, we developed an approach to derive *in vivo* IκB-NFκB affinities. The fact that IκBα, IκBβ and IκBε protein abundances in MEFs deficient in classical NFκB dimers (*rela*^{-/-} *crel*^{-/-} *nfκb1*^{-/-}) were much more reduced than their corresponding mRNA levels (Fig. 3b) indicated the degree to which the interaction with NFκB stabilized the half-life of the three classical IκBs as established by previous reports^{12,14}. We reasoned that measurements of relative abundances of IκB proteins in mutant cells with alternate NFκB dimer repertoires could be used to infer *in vivo* IκB-NFκB dimer affinities.

To distinguish IκB interaction affinities for the A:50 and A:A dimers, we produced composite NFκB knockout MEFs (*relb*^{-/-} *nfκb2*^{-/-} *nfκb1*^{-/-} *crel*^{-/-}) in which RelA is the sole NFκB protein family member, and RelA-deficient MEFs, which do not contain A:A homodimers but contain the partially compensating cRel:p50 heterodimer in place of A:50 (refs 7,18; Supplementary Fig. 2a,b). Using these cells, the experimentally determined IκBα/IκBβ abundance ratios (Fig. 3c) constrained the acceptable ranges of IκB-NFκB affinities via model parameter fitting procedures (Fig. 4a). For example, in A:50-deficient cells, the IκBα abundance was reduced to 35 ± 8% of that in wild-type cells, constraining the IκBα-A:A and IκBα-A:50 affinity to a narrow band within the two-dimensional parameter space (top left panel). In contrast, IκBβ abundance was hardly affected (76 ± 24% of the wild-type cells) and provided less constraint on the acceptable affinities of IκBβ-A:A and IκBβ-A:50 interactions on the basis of the particular parameter landscape (top right panel). Similarly, IκBα and IκBβ abundance measurements in A:A-deficient cells provided additional constraints (bottom panels). The overlap of these acceptable ranges for each IκB in both NFκB knockout conditions determined not a single parameter set, but rather a narrower range of parameters that can account for all available experimental data.

As the NFκB dimer affinity and IκB abundance measurements are associated with experimental error, we sought to characterize the resulting uncertainty about the true IκB-NFκB affinities. To do so, we calculated a probability for each IκB abundance on the basis of a twofold variance around the mean of NFκB affinity measurements. Then, we compared these values to the experimentally determined distributions (defined by mean and s.d.) of IκB abundances. This allowed us to determine the likelihood that a given pair of IκB-A:A and IκB-A:50 affinities is true based on all available experimental data along with its associated uncertainty (Fig. 4b). This analysis allowed us to define the ranges of probable IκB-dimer affinities and it demonstrated that IκBβ was consistently predicted to have a clear preference for A:A over A:50 (>100-fold). We chose seven parameter sets as

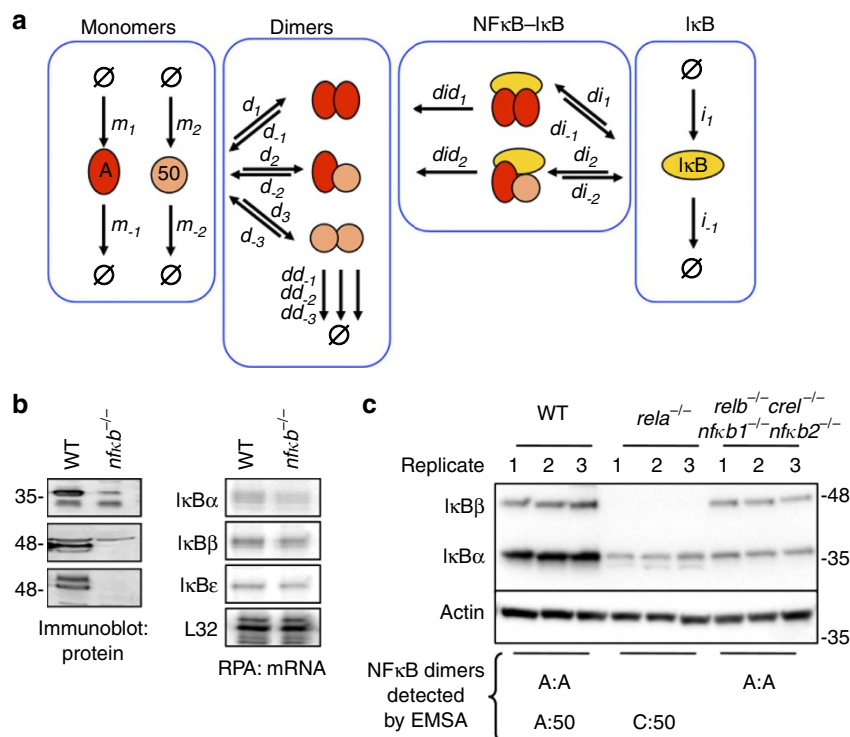


Figure 3 | Differential interaction affinities for IκB and NFκB family members. (a) A model schematic of the Rel-NFκB dimer generation module. It depicts the dimerization of RelA and p50 NFκB polypeptides as in Fig. 1a, with the addition of a prototypical inhibitor of NFκB (IκB). m_1 and m_2 are RelA and p50 synthesis rate constants, m_{-1} and m_{-2} are RelA and p50 degradation rate constants, respectively. d_1 , d_2 and d_3 are dimer association rate constants, while d_{-1} , d_{-2} and d_{-3} are A:A, A:p50 and p50:p50 dimer dissociation rate constants, respectively. dd_{-1} , dd_{-2} and dd_{-3} are A:A, A:p50 and p50:p50 dimer degradation rate constants, respectively. i_1 is the IκB synthesis rate constant, i_{-1} is the IκB degradation rate constant. di_1 and di_2 are the IκB-NFκB association rate constants. di_{-1} and di_{-2} are the IκB-NFκB dissociation rate constants. did_1 and did_2 are the IκB-NFκB degradation rate constants of (RelA, cRel and p50) using antibodies against the indicated proteins (IκBα, IκBβ and IκBε). (b) Immunoblot (left panel) of whole-cell extracts of wild-type MEFs and MEFs deficient in canonical NFκB genes (RelA, cRel and p50) using antibodies against the indicated proteins (IκBα, IκBβ and IκBε). RNAse protection assay (RPA, right panel) of previous extracts to measure transcript levels of the indicated genes (IκBα, IκBβ, IκBε and L32). Immunoblot and RPA data are representative of more than three independent experiments that consistently show a deep reduction IκB protein levels without a corresponding reduction in transcript levels. (c) Immunoblot of indicated IκBs in indicated NFκB dimer compound knockout MEFs as compared to wild type MEFs, with the indicated NFκB dimers below. The blot is a representative of three independent experiments that consistently showed that presence of RelA is required and sufficient for the detection of IκBβ protein. Quantitation of this data is shown as bar graphs in Fig. 4a.

representatives of the probable and improbable parameter spaces governing IκBα and IκBβ interactions (Fig. 4b, Supplementary Table 5) in order to ascertain their likelihood in further cell biological assays.

Testing the model of IκBβ controlling the RelA homodimer.

Using the combination of probable and improbable parameter sets (Supplementary Table 5) for IκB-NFκB dimer affinities within the experimentally determined ranges, we parameterized a mathematical model to account for the generation of distinct RelA dimers (Fig. 5a, Supplementary Table 3, Supplementary Note 3). We developed three predictions that depend on high IκBβ preference for the A:A homodimer and tested them experimentally. First, we used the model to calculate the basal abundance of RelA protein in cells containing only RelA (*relb*^{-/-} *nfkβ2*^{-/-} *nfkβ1*^{-/-} *crel*^{-/-}) under two regimes, probable and improbable affinity predictions (Supplementary Table 5). We found that most probable affinity sets predicted a lower decrease (~1.5- to 2-fold) in RelA protein levels than most improbable affinity sets (Fig. 5b). Indeed, immunoblot analysis showed only a small decrease (~1.5-fold) in RelA protein (Fig. 5c).

Second, we used the model to simulate the steady-state abundances of IκB-bound NFκB dimers in wild-type cells; this

resulted in the prediction that the majority of A:A homodimers are associated with IκBβ for the probable, but not the improbable affinity sets (Fig. 5d). Further, the majority of A:50 dimers were predicted to be associated with IκBα, but in some, the primary interaction partner was IκBβ (Fig. 5d). To test this prediction we prepared cytoplasmic extracts from unstimulated MEFs that contain latent IκB-NFκB complexes. The ionic detergent deoxycholate is known to disrupt IκB-NFκB interactions while leaving the dimer intact and capable of binding DNA¹⁹, thereby revealing both latent RelA homo- and heterodimers (Fig. 5e, lane 2). By prior immunodepleting IκBα or IκBβ, we found that IκBβ (>50%) is indeed the primary interaction partner for the A:A homodimer (lane 6), whereas IκBα depletion left the A:A homodimer largely intact (lane 4). In addition, we found that IκBα is the primary interaction partner (>50%) for the A:50 heterodimer (lane 4), although some A:50 is bound to IκBβ as well (lane 6). On the basis of these data, we were able to narrow the probable parameter range by excluding parameter sets that did not satisfy the experimentally determined IκB-NFκB interactions (Supplementary Table 5).

Finally, we asked whether IκBβ is in fact required for A:A homodimer generation. Computational simulations with the probable affinity sets predicted a dramatic decrease (<20% of wild type) in A:A homodimer abundance in IκBβ-deficient but

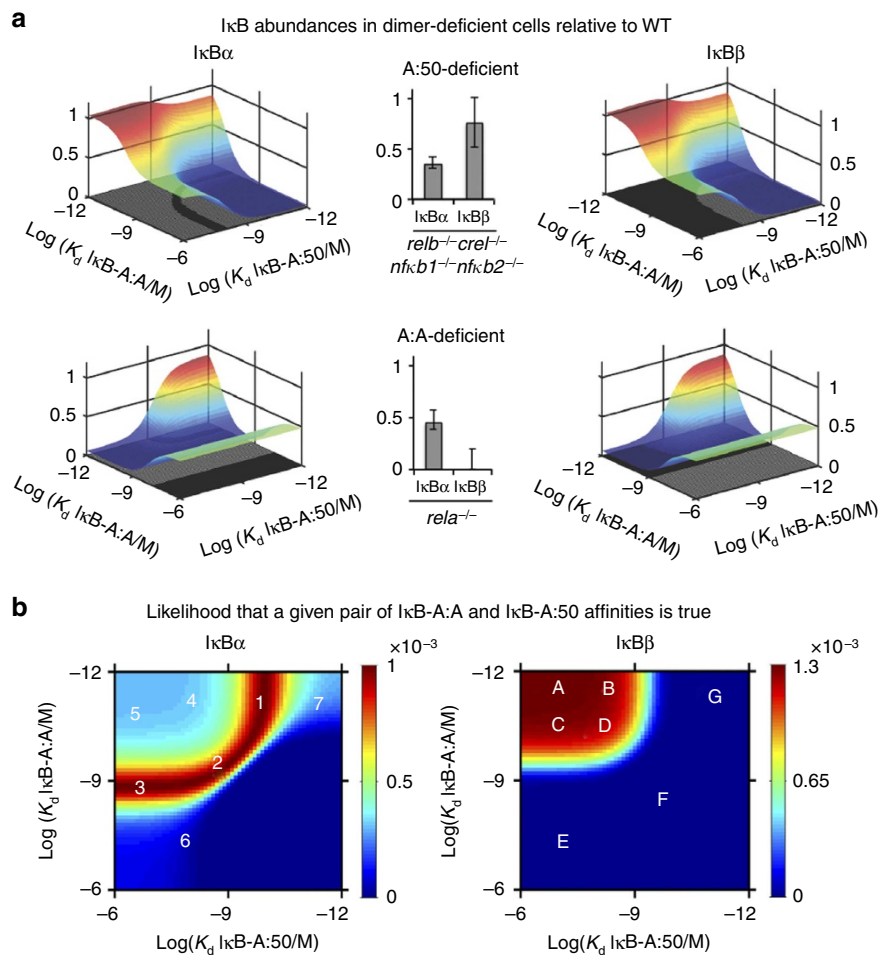


Figure 4 | Deriving probable IκB-NFκB interaction affinities from experimental data. (a) Surface plots of indicated IκB abundances ($-\alpha$ or $-\beta$) in cells deficient for the indicated NFκB dimer (RelA:p50 heterodimer-deficient, top; RelA:RelA homodimer-deficient, bottom) over the indicated ranges of IκB-NFκB affinities, as predicted by the model schematized in Fig. 3a. Middle, bar graphs of the experimentally IκB abundances in the indicated NFκB dimer-deficient cells relative to WT. (A representative data figure is shown in Fig. 3c.) Experimentally determined abundances constrained the range of allowable IκB-NFκB affinities in the surface plots, indicated by shadows on the xy plane. (b) Heat maps of probable IκB-NFκB affinities. Probabilities (indicated in the colour scale) were calculated using the distribution experimental measurements, defined by the mean and s.d. (Figs 2a, 3c and 4a); they describe the relative likelihood that an indicate parameter set if correct based on available experimental data. The most probable IκB-NFκB affinities are in red, while the least probable affinities are in dark blue. Selected probable and improbable parameter values are indicated (white letters and numbers, listed in Supplementary Table 5), and were used for model predictions in Fig. 5.

not in IκB α -deficient cells (Fig. 5f). Improbable parameter affinity sets yielded variable amounts of A:A homodimer abundance in the three genotypes. Our experimental analysis supported the probable affinity sets' predictions: IκB β -deficient cells showed a dramatic drop (<2% of wild type) in the A:A homodimer abundance as revealed by deoxycholate treatment of cytoplasmic extracts, whereas IκB α deficiency did not appear to alter the A:A homodimer repertoire (>97% of wild type; Fig. 5g). We then determined which of the parameter sets passed the above three tests. Remarkably, none of the improbable parameters allowed for correct predictions, while two parameter sets from the initially determined probable range did (Supplementary Table 5). These three model-directed experimental studies thus support the notion that a high affinity for the A:A homodimer endows IκB β with a stabilizing role in the abundance of the A:A homodimer. Interestingly, two NFκB target genes (*MIP-2* and *TNF α*), whose expression was found to be mediated by RelA:RelA homodimers, showed a marked reduction in IκB β -deficient cells (particularly at late time points), whereas expression of RelA:p50 target genes was not reduced but elevated instead (Supplementary Fig. 3).

IκB β counters monomer competition and rescues RelA homodimer. Our work thus far has identified two system properties that control the RelA:RelA abundance: monomer competition and IκB β -mediated stabilization. These mechanisms have opposing effects on RelA:RelA homodimer abundance, and so we examined their relationship to each other by simulating the effect of IκB β deficiency in the context of p50-containing or p50-deficient cells. In p50-deficient cells, compensation by p52 is observed but remains incomplete⁷; in our simulations we account for that with a 30-fold reduction in p50 synthesis rates (qualitatively similar results were obtained with a range of synthesis rates; Fig. 6a). We find that loss of IκB β in p50-deficient cells result in lower A:A abundance, although the A:A homodimer remains detectable in contrast to results in p50-containing cells, in which A:A abundance was more IκB β -dependent (Fig. 5f,g).

To test the validity of this model prediction, we generated p50/IκB β -doubly-deficient MEFs and compared relative abundances of RelA homodimers as determined using electrophoretic mobility shift assays (EMSA; Figs 1c and 6b). We found that in good agreement with the model predictions, IκB β deficiency

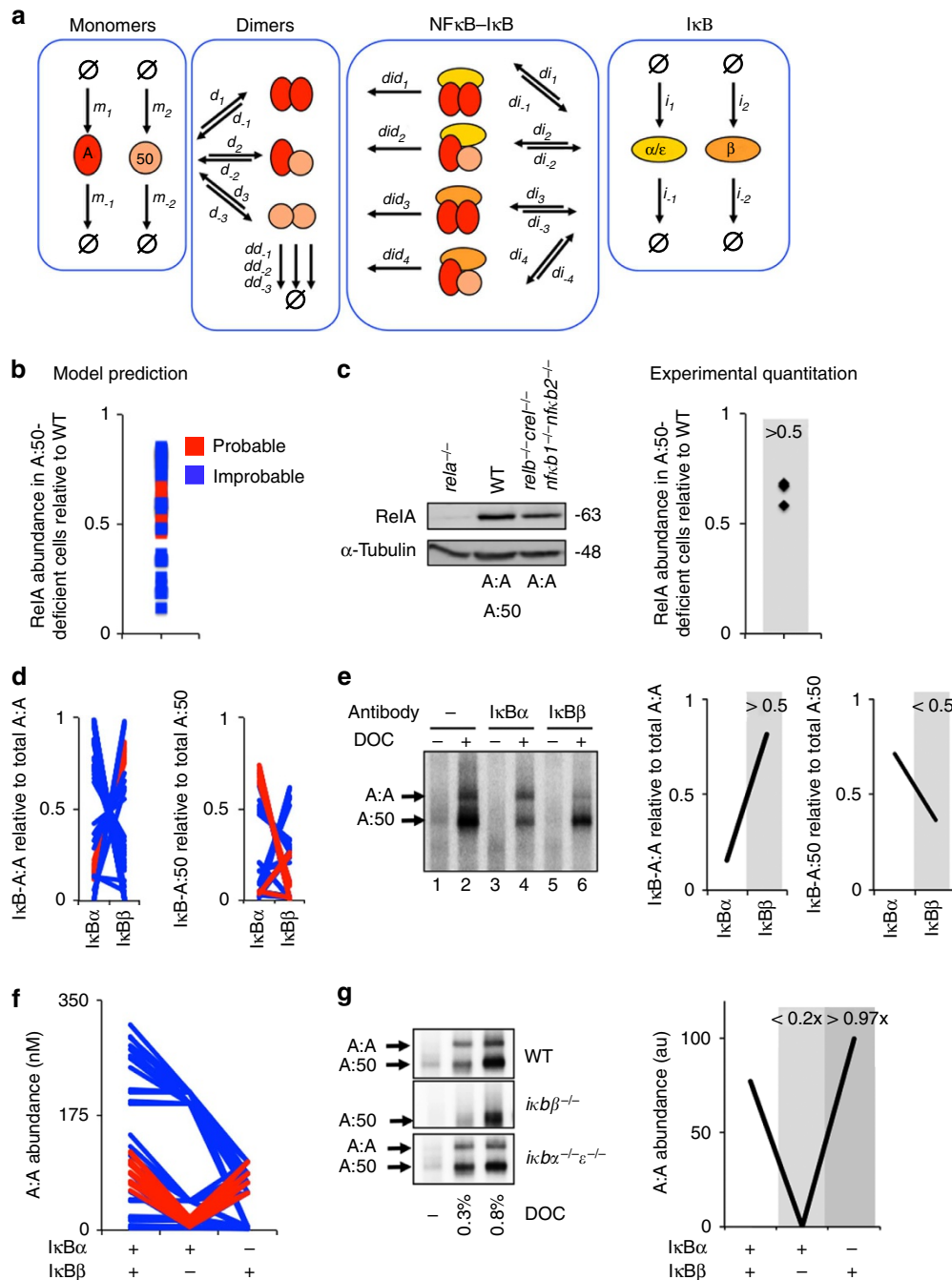


Figure 5 | Iterative testing and refinement of the IκBβ-RelA homodimer preference model. (a) A model schematic of the Rel-NFκB dimer generation module, as in Fig. 3a but with two IκBs, IκBα and IκBβ, necessitating i_1 and i_2 synthesis rate constants, i_{-1} and i_{-2} degradation rate constants, di_1, di_2, di_3 and di_4 IκB-NFκB association rate constants. $di_{-1}, di_{-2}, di_{-3}$ and di_{-4} IκB-NFκB dissociation rate constants, and did_1, did_2, did_3 and did_4 IκB-NFκB degradation rate constants of IκB to release NFκB. (b) Computational prediction of RelA protein abundance in A:50-deficient cells (relative to wild-type cells), using probable (red) and improbable (blue) affinities shown in Fig. 4b and listed in Supplementary Table 5. (c) Immunoblot against RelA of whole-cell extracts from RelA-deficient, wild type and RelA-only MEFs. The right panel shows the quantitation of three independent experiments. These consistently showed values of >0.5 . (d) Computational predictions of the abundances of NFκB dimers RelA:RelA (left) and RelA:p50 (right) bound to either IκBα or IκBβ as indicated. These calculations used probable (red) and improbable affinities (blue) as in b. (e) EMSA of DOC-treated cytoplasmic extracts (which results in the separation of NFκB dimers from IκBs) to quantitate IκB-bound NFκB dimer abundance. Prior immunodepletion of the extracts with antibodies against IκBα or IκBβ allows quantitation of NFκB bound to the remaining IκB isoform. Data shown are representative of three independent experiments, and the right panel shows the corresponding quantitation. (f) Computational predictions of the basal abundances of the RelA:RelA homodimer in wild-type, IκBβ-deficient and IκBα-deficient MEFs using probable (red) and improbable (blue) affinities as in b. (g) EMSAs (left panel) of DOC-treated cytoplasmic extracts of wild-type, IκBβ-deficient and IκBα/ε-deficient MEFs. Shown is a representative result of three independent experiments, and the right panel shows the corresponding quantitation.

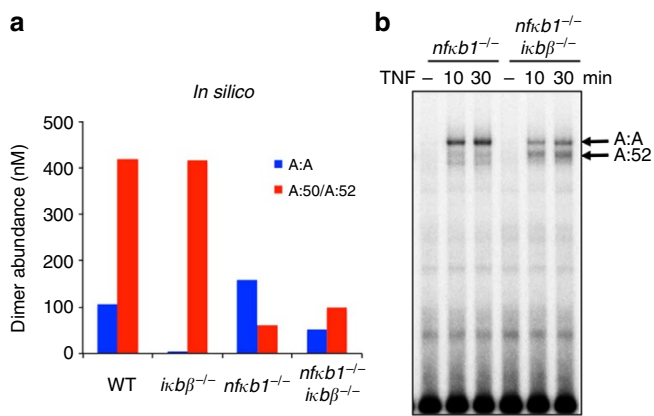


Figure 6 | IκBβ is important in RelA homodimer formation. (a) Bar graph depicting the simulation results of NFκB dimer abundances in wild-type, IκBβ-deficient, p50-deficient and IκBβ/p50 doubly deficient MEFs. Compensation by p52 in p50-deficient cells was simulated by allowing for synthesis of a p50-like molecular species. (b) EMSA of nuclear extracts prepared from p50-deficient and p50/IκBβ-deficient MEFs treated with TNF at 10 and 30 min. In the absence of p50-mediated monomer competition, the RelA:RelA homodimer is highly abundant, even in the absence of IκBβ. Data shown are representative of three independent experiments.

results in a lower A:A abundance, but that detectable levels of A:A homodimer remained. Thus, both our modelling and experimental results support the notion that IκBβ controls A:A abundance, and further suggest that IκBβ plays a key role in neutralizing the effect of monomer competition on the abundance of the low-affinity A:A homodimer.

IκBα controls the dynamics of both RelA-containing dimers.

The described mathematical model recapitulates the functions of the Rel-NFκB dimer generation module in generating the latent NFκB dimer repertoire in unstimulated fibroblasts. To study stimulus-induced dynamic regulation of the generation, activation and inactivation of RelA homo- and heterodimers, we connected this model with a well-tested model of the IκB-NFκB signalling module²⁰ to generate Model 4 (Fig. 7a, Supplementary Fig. 4a, Supplementary Table 4, Supplementary Table 5, Supplementary Table 6, Supplementary Note 4).

A hallmark of NFκB signalling is negative feedback control mediated by IκBα that ensures post-induction repression of RelA:p50 activity following transient exposure to inflammatory cytokines^{20,21}. To test whether the resulting model recapitulates the signalling dynamics of two NFκB dimers, we simulated TNF-induced signalling. Model simulations showed transient activation of both dimers in wild-type cells with relative abundances that are supported by experimental measurements of both dimers. Post-induction repression was mediated by IκBα, as *IκBα*^{-/-} MEFs showed sustained activity in both computational (Fig. 7b) and experimental studies (Fig. 7c), not only of the A:50 heterodimer, but also of the A:A homodimer. The sustained A:A homodimer activity in *IκBα*^{-/-} MEFs is not due to an increase in IκBβ protein levels (Supplementary Fig. 4b), but rather arises from the loss of negative feedback regulation of IκBα. While previous work has demonstrated the critical role of IκBα in the dynamic control of RelA:p50, our simulation and experimental results provide evidence that IκBα plays a role in the dynamic control of RelA:RelA activity as well.

We were curious how it could be possible that IκBα is the key dynamic regulator of A:A activity but does not contribute substantially to A:A homodimer generation. We investigated

these two roles as a function of the affinity between IκBα and the A:A homodimer. We simulated both the basal abundance of the A:A homodimer and the duration of A:A homodimer activity above the threshold of a 50% of maximum activity (Supplementary Fig. 4c) as a function of IκBα-A:A homodimer affinities over a thousandfold range (Fig. 7d). We found that lowering the IκBα-A:A affinity would prolong A:A homodimer activity following transient stimulation, but have little impact on A:A abundance; however, increasing the affinity would increase the basal abundance of the A:A homodimer. We thus conclude that the IκBα affinity for the A:A homodimer is tuned to be low enough that IκBα does not function within the Rel-NFκB dimer generation module, but high enough so that it functions within the IκB-NFκB signalling module to control the dynamics of A:A activity.

Discussion

The described work reveals a novel and specific function for IκBβ. IκBs are named ‘inhibitors of NFκB’ because they are capable of inhibiting NFκB DNA-binding activity in cell-free *in vitro* assays¹⁹, and IκBβ was identified in that same manner²². However, we show here that *in vivo* IκBβ functions primarily as a positive regulator of NFκB dimer generation. Whereas the RelA:p50 dimers can readily form, owing to a high dimerization affinity, RelA:RelA homodimer formation requires the stabilizing influence of IκBβ. These distinct functions of IκBβ and other IκBs explain the phenotypes observed in knockout mice.

Previous studies of the IκB-NFκB signalling module revealed that negative feedback by IκBα, IκBε and IκBδ shape the dynamics of NFκB activity in response to stimuli^{12,20,21,23–25}. Indeed, prolonged NFκB activity leads to a severe hyperinflammatory phenotype in IκBα-deficient mice, and to hyperproliferation in B cells lacking IκBε (ref. 26) or IκBδ (ref. 36). However, IκBβ-deficient mice were recently reported to have hypoinflammatory responses, reduced expression of TNF and resistant to endotoxic shock and collagen-induced arthritis^{5,27}. We show here that IκBβ-deficient fibroblasts lack one member of the NFκB dimer family, namely the homodimer of the potent activator RelA (Fig. 3). Similar resultant RelA:RelA and RelA:cRel deficiency has been observed in *IκBβ*^{-/-} macrophages⁵.

Previously established mathematical models of the IκB-NFκB signalling module are unable to account for this phenotype. These models assume a constant amount of NFκB dimer as a given quantity, and calculate the control of its subcellular localization and DNA-binding activity as a function of dynamically regulated IκB degradation and re-synthesis. Here we have constructed a model for the Rel-NFκB dimer generation module and parameterized based on biophysical measurements of recombinant proteins and a series of iterative cycles of prediction and *in vivo* measurements. Our work reveals that IκBβ is critical for NFκB RelA:RelA homodimers in MEFs, whose spontaneous generation is challenged not only by poor intrinsic dimer affinities, but also by competition with the high-affinity heterodimerization partner p50.

A key feature of IκBβ function is an unusually high affinity for RelA:RelA homodimers (3.2 pM). As recombinant IκBβ is not monodispersed in cell-free systems, this model-aided interpretation of cellular measurements cannot be tested directly. While subnanomolar dissociation constants have previously been reported for other protein-protein interactions²⁸, it may be prudent to reconsider the simplifying assumption of the coarse-grained model formulation, in which IκBβ interacts only with the pre-formed dimer. Instead, IκBβ might be able to bind monomers sequentially (Supplementary Fig. 5a), in which case IκBβ may be considered a bona fide chaperone for RelA:RelA

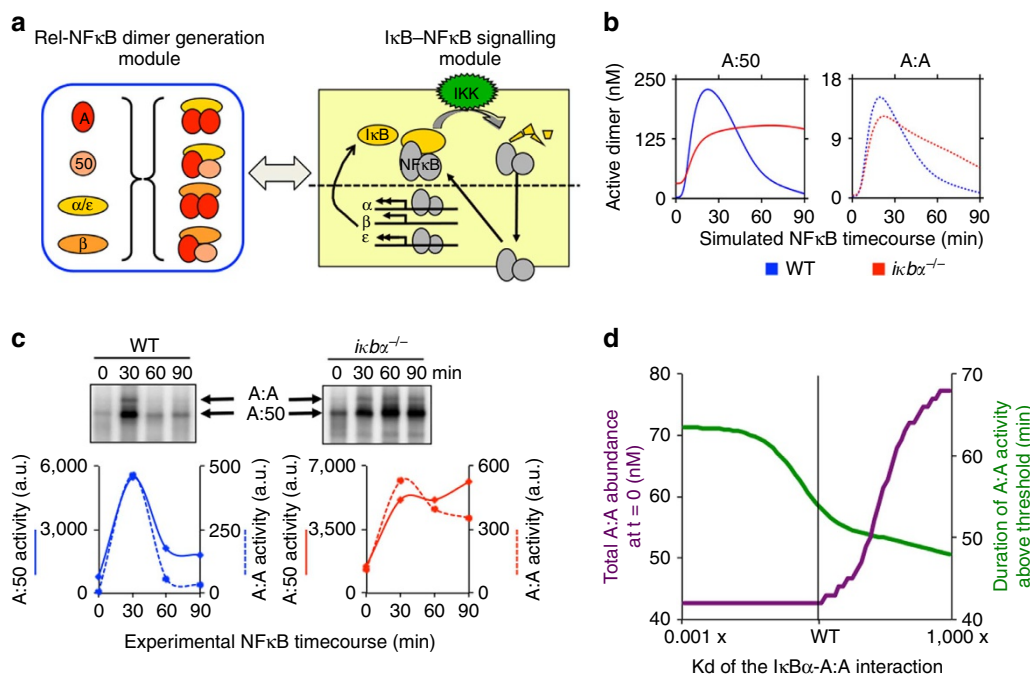


Figure 7 | While IκBβ regulates NFκB-RelA homodimer generation, IκBα regulates its signalling. (a) A schematic showing the linking of the Rel-NFκB dimer generation module and the IκB-NFκB signalling module²⁰ to simulate stimulus-induced activation of multiple NFκB dimers. IκBα, IκBβ and IκBε interact with A:A and A:50 dimers as described in Fig. 5a. A detailed model schematic is shown in Supplementary Fig. 5a. (b) Computational time course simulations of TNF-stimulated nuclear DNA-binding activity of the indicated NFκB dimers A:50 (left, solid lines) and A:A (right, dashed lines) in wild-type (blue) and IκBα-deficient (red) MEFs. Both dimer activities exhibit post-induction repression mediated by IκBα. (c) EMSAs (top panels) of nuclear extracts of wild-type and IκBα-deficient MEFs prepared from TNF-stimulated cells at 30, 60 and 90 min. Quantitation (bottom panels) of the A:50 (solid lines) A:A and A:50 (dashed lines) NFκB dimers show prolonged activation in IκBα-deficient (right, red) as compared with wild-type (left, blue) MEFs. Shown is a representative of at least three independent experiments. (d) Computational simulations of A:A abundance (green) and duration of TNF-induced A:A activity (purple) as a function of the interaction affinity between IκBα and the A:A. These simulations were performed with the integrated model described in a, and they show that a lower K_d would allow IκBα to contribute to A:A generation, while a higher K_d would reduce IκBα's ability to terminate TNF-induced A:A activity.

homodimer formation. Whereas the single-step reaction scheme in the original model is $A + B \leftrightarrow A_2 + B \leftrightarrow A_2B$, defining dissociation constants as $Kd_1 = \frac{[A]^2}{[A_2]}$ and $Kd_2 = \frac{[A_2][B]}{[A_2B]}$, the two-step reaction scheme would be $A + B \leftrightarrow AB + A \leftrightarrow A_2B$, defining dissociation constants $Kd_3 = \frac{[A][B]}{[AB]}$, $Kd_4 = \frac{[AB][A]}{[A_2B]}$ and $Kd_5 = \frac{Kd_1 Kd_2}{Kd_3}$. Whereas Kd_1 and Kd_2 were determined to be 800 nM and 3.2×10^{-3} nM, respectively, in the two-step model, Kd_3 is inversely proportional to Kd_4 (Supplementary Fig. 5b). Thus, a two-step model would yield interaction constants in the micro- and nanomolar ranges that are more commonly observed within bimolecular interactions.

In addition to IκBβ's described role within the Rel-NFκB dimer generation module, a hypophosphorylated IκBβ has also been shown to have nuclear functions in macrophages in protecting promoter-bound NFκB from IκBα-mediated negative feedback²⁹. Resistance to negative feedback may be imparted particularly to those NFκB dimers (for example, A:A and RelA:cRel) that show high affinity for IκBβ (refs 5,27). As such, both the proposed nuclear function and the here-described chaperone function are a consequence of the high affinity for specific dimers revealed through our iterative experimental and computational study.

The parameterization of computational models is a recognized challenge of systems biology. Whereas strategies have been developed to parameterize mathematical synthesis and degradation expressions, as well as those describing enzymatic functions within cells, the interactions between proteins are rarely quantitatively addressed. *Ex vivo*, affinity and kinetic rate

constants can be determined for the interaction of recombinant proteins; however, the *in vivo* relevance of such constants is limited by the difficulties of producing recombinant full-length proteins with appropriate post-translational modifications. Here we exploited the fact the IκB abundance is a function of its interaction with NFκB (ref. 12; Fig. 2b) and employed computational modelling in order to derive *in vivo* interaction affinities from immunoblot quantifications. Interestingly, it was previously observed that RelA deficiency results in IκBβ deficiency^{30,31}, and such obligate interactions are not rare^{32,33}, suggesting that our model parameterization strategy may be employed for other biological systems.

We described the Rel-NFκB dimer generation module and the IκB-NFκB signalling module as distinct but there are of course numerous interactions. At a minimum, we may consider that IκBβ, within the Rel-NFκB dimer generation module, functions as a 'licensing factor' for subsequent dynamic control by IκBα. The distinct functions by these structurally homologous proteins are on the basis of both their specific protein-interaction constants, and on their distinct dynamic degradation and synthesis control. Indeed, the regulatory utility of such 'hand-off' or 'relay control' network motifs, based on kinetic differences between family members, may be a driver of the expansion of protein families.

Methods

Computational modelling. Four computational models were constructed for this study. Models 1–3 (Supplementary Note 1–3) address how NFκB dimers are generated from RelA and p50 NFκB monomers and how interactions with two IκB

isoforms may affect the abundance of these dimers; model 4 addresses how nuclear localization of these NF κ B dimers is induced and regulated following TNF-induced IKK activation.

Model 1 (Fig. 1a, Supplementary Note 1) contains RelA and p50, which form three NF κ B dimers: RelA:A, RelA:p50 and p50:p50. The rate constants for the parameters in these equations are found in Supplementary Table 1.

Model 2 (Fig. 3a, Supplementary Note 2) is based on model 1 above. A generic I κ B can complex with RelA:A and RelA:p50. The p50:p50 dimer has not been demonstrated to bind to I κ B, so that interaction is excluded from this model. We assume no degradation of the I κ B–NF κ B complex or the NF κ B dimer from the complex; the dimer may dissociate or I κ B may be degraded and release the NF κ B dimer. The rate constants for the parameters in these equations are found in Supplementary Table 2.

Model 3 (Fig. 5a, Supplementary Note 3) is based on Model 2. I κ B α / ϵ and I κ B β are the specific I κ Bs in the model, which can complex with RelA:A and RelA:p50. For simplicity, I κ B α and I κ B ϵ are assumed to have the same molecular interaction characteristics and are treated as a single I κ B species. The rate constants for the parameters in these equations are found in Supplementary Table 3. Parameterization of the model required exploration of the parameter space for I κ B–NF κ B affinities and determining the likelihood of each set of parameter values (see results Fig. 4b). Further parameterization involved additional experimental data (Fig. 5) in order to eliminate nonconforming parameter sets (see Supplementary Table 5).

Model 4 (Fig. 7a, Supplementary Table 4) appends previously published I κ B–NF κ B signalling models^{25,34} with the reactions that govern NF κ B dimer generation and dimer–I κ B interactions as described in model 3; however, I κ B α and I κ B β are explicitly enumerated. The complete new model contains 40 species and 110 reactions governed by 65 parameters (Supplementary Table 4). I κ B–NF κ B affinities were determined based on a series of experimental data that had to be satisfied (see Supplementary Table 5); parameterization included basal protein abundance measurements (Supplementary Table 6).

The model ODEs were solved numerically using MATLAB version R2013a (The MathWorks Inc.) with subroutine *ode15s*, a variable order, multistep solver. The system was allowed to equilibrate from starting conditions to a steady state, defined as showing no concentration changes greater than 1% over a period of 4,000 min. Stimulus-induced perturbation from the steady state of Model 4 was accomplished by direct modulation of IKK activity via a numerical input curve representing TNF stimulation (adapted from ref. 20).

Code Availability. MATLAB code files are available on request.

Deriving I κ B–NF κ B affinities. Model 2 was used to calculate the I κ B abundances in RelA:p50-deficient and RelA:RelA-deficient cells using NF κ B dimerization affinities (determined by 31 sets of d parameters for homodimers and 31 sets of heterodimers) and I κ B–NF κ B interaction affinities (determined by 61 sets of di parameters for I κ B α and 61 for I κ B β). NF κ B dimerization affinities were measured with an assumed variance of twofold, and so each I κ B abundance in each cell could be associated with a probability. These were intersected with the experimentally determined distributions of I κ B abundances (defined by mean and s.d.), allowing us to determine the probability (based on available experimental data) that a specific set of the 3,575,881 possible parameter sets is correct. The probabilities for I κ B–NF κ B interaction affinities are shown in Fig. 4b. Specific sets of probable and improbable parameter combinations were further tested in Fig. 5 against various experimentally determined outcomes to narrow down the most probably parameter sets.

Cell culture. Immortalized MEFs were prepared and cultured as previously described^{21,23}. Briefly, cells were grown to confluence in Dulbecco's Modified Eagle's Medium supplemented with 10% bovine calf serum, 1% penicillin–streptomycin and 1% L-Glutamine. Stimulations were performed using 1 ng ml⁻¹ TNF (Roche). The cell lines used were as follows: wild-type (ref. 21), *ikb β* ^{-/-} (ref. 23), *ikb α* ^{-/-} *ikb ϵ* ^{-/-} (ref. 21), *ikb α* ^{-/-} *ikb β* ^{-/-} *ikb ϵ* ^{-/-} (ref. 12), *rela*^{-/-} (ref. 7), *rela*^{-/-} *crel*^{-/-} *nfk1*^{-/-} (ref. 12), *nfk1*^{-/-} *nfk2*^{-/-} (ref. 7), *crel*^{-/-} *relb*^{-/-} *nfk1*^{-/-} *nfk2*^{-/-} knockouts were generated from E12.5–14.5 embryos and immortalized following the 3T3 protocol.

Biochemistry. EMSA²¹, deoxycholate (DOC) + EMSA²⁴, EMSA supershift³⁵, wild-type + mutant oligo competition EMSA⁷, immunodepletion, RNase Protection Assay²³ and immunoblotting²¹ were performed as previously described. Briefly, for EMSA, nuclei were collected by hypotonic lysis and resuspended in 30 μ l NE buffer (250 mM Tris pH 7.8, 60 mM KCl, 1 mM EDTA, with freshly added 1 mM dithiothreitol, 1 mM phenylmethylsulfonyl fluoride (PMSF)) and lysed by three freeze-thaw cycles. Nuclear lysates were cleared by 14,000g centrifugation and adjusted to 1 μ g μ l⁻¹ total protein concentration. Total nuclear protein (2 μ g) was incubated at room temperature for 15 min with 0.1 pmoles of P32-labelled 34 bp double-stranded oligonucleotide containing a consensus κ B site (5'-AGCTTGCTACAAGGGACTTCCGCTGTCTACTTT-3') in 3 μ l binding buffer (10 mM Tris-Cl pH 7.5, 50 mM NaCl, 10% glycerol, 1% NP-40, 1 mM EDTA, 0.1 μ g μ l⁻¹ polydIdC). Complexes were resolved on a nondenaturing gel

and visualized using a Typhoon Scanner (GE Healthcare Life Sciences). For DOC sensitivity, 2 μ g of nuclear extract was treated with DOC to a final concentration of 0.8% for 30 min and subsequently subjected to EMSA analysis. For supershifts, nuclear extracts were incubated with indicated antibody cocktails for 20 min on ice before probe incubation followed by resolution on nondenaturing gel. For wt-mutant competition EMSA, nuclear extracts were incubated with 100-fold molar excess of wt and mutant κ B probes and resolved as before. For RNase Protection assay, total RNA was made from confluent serum-starved fibroblasts using Trizol-Reagent (Ambion by Life Technologies). RNase Protection assay was performed with 5 μ g RNA using Riboquant probe set mCK-5 (Pharmingen) according to the manufacturer's instructions. For whole-cell western blots, cells were lysed within six-well plates using SDS-PAGE sample buffer, resolved on acrylamide gels, transferred to polyvinylidene difluoride membranes and probed with specified antibodies.

I κ B α (sc-371, 1:5,000), I κ B β (sc-946, 1:5,000 for immunoblot and sc-969, 1:20, for immunodepletion), RelA (sc-372, 1:5,000) antibodies were provided by Santa Cruz Biotechnology. p50 N-terminal antisera (1:10,000) was a generous gift from Nancy Rice.

References

- Hoffmann, A., Natoli, G. & Ghosh, G. Transcriptional regulation via the NF-kappaB signaling module. *Oncogene* **25**, 6706–6716 (2006).
- Ghosh, S. & Hayden, M. S. New regulators of NF-kappaB in inflammation. *Nat. Rev. Immunol.* **8**, 837–848 (2008).
- Savinova, O. V., Hoffmann, A. & Ghosh, G. The Nfkb1 and Nfkb2 proteins p105 and p100 function as the core of high-molecular-weight heterogeneous complexes. *Mol. Cell* **34**, 591–602 (2009).
- Basak, S., Behar, M. & Hoffmann, A. Lessons from mathematically modeling the NF-kB pathway. *Immunol. Rev.* **246**, 221–238 (2012).
- Rao, P. *et al.* I κ B β acts to inhibit and activate gene expression during the inflammatory response. *Nature* **466**, 1115–1119 (2010).
- Liou, H. C., Sha, W. C., Scott, M. L. & Baltimore, D. Sequential induction of NF-kappa B/Rel family proteins during B-cell terminal differentiation. *Mol. Cell Biol.* **14**, 5349–5359 (1994).
- Hoffmann, A., Leung, T. H. & Baltimore, D. Genetic analysis of NF-kappaB/Rel transcription factors defines functional specificities. *EMBO J.* **22**, 5530–5539 (2003).
- Leung, T. H., Hoffmann, A. & Baltimore, D. One nucleotide in a kappaB site can determine cofactor specificity for NF-kappaB dimers. *Cell* **118**, 453–464 (2004).
- Fusco, A. J. *et al.* Stabilization of RelB requires multidomain interactions with p100/p52. *J. Biol. Chem.* **283**, 12324–12332 (2008).
- Maine, G. N., Mao, X., Komarck, C. M. & Burstein, E. COMMD1 promotes the ubiquitination of NF-kappaB subunits through a cullin-containing ubiquitin ligase. *EMBO J.* **26**, 436–447 (2007).
- Huxford, T., Huang, D. B., Malek, S. & Ghosh, G. The crystal structure of the IkappaBalpha/NF-kappaB complex reveals mechanisms of NF-kappaB inactivation. *Cell* **95**, 759–770 (1998).
- O'Dea, E. L. *et al.* A homeostatic model of I[kappa]B metabolism to control constitutive NF-[kappa]B activity. *Mol. Syst. Biol.* **3** (2007).
- Scott, M. L., Fujita, T., Liou, H. C., Nolan, G. P. & Baltimore, D. The p65 subunit of NF-kappa B regulates I kappa B by two distinct mechanisms. *Genes Dev.* **7**, 1266–1276 (1993).
- Pando, M. P. & Verma, I. M. Signal-dependent and -independent degradation of Free and NF-kB-bound I κ B α . *J. Biol. Chem.* **275**, 21278–21286 (2000).
- Ishikawa, H. *et al.* Chronic inflammation and susceptibility to bacterial infections in mice lacking the polypeptide (p)105 precursor (NF- κ B1) but expressing p50. *J. Exp. Med.* **187**, 985–996 (1998).
- Phelps, C. B., Sengchanthalangsy, L. L., Huxford, T. & Ghosh, G. Mechanism of I κ B α Binding to NF- κ B Dimers. *J. Biol. Chem.* **275**, 29840–29846 (2000).
- Bergqvist, S. *et al.* Kinetic enhancement of NF- κ B · DNA dissociation by I κ B α . *Proc. Natl Acad. Sci. USA* **106**, 19328–19333 (2009).
- Gapuzan, M.-E. R., Schmah, O., Pollock, A. D., Hoffmann, A. & Gilmore, T. D. Immortalized fibroblasts from NF- κ B RelA knockout mice show phenotypic heterogeneity and maintain increased sensitivity to tumor necrosis factor α after transformation by v-Ras. *Oncogene* **24**, 6574–6583 (2005).
- Baeuerle, P. A. & Baltimore, D. I kappa B: a specific inhibitor of the NF-kappa B transcription factor. *Science* **242**, 540–546 (1988).
- Werner, S. L. *et al.* Encoding NF- κ B temporal control in response to TNF: distinct roles for the negative regulators I κ B α and A20. *Genes Dev.* **22**, 2093–2101 (2008).
- Hoffmann, A., Levchenko, A., Scott, M. L. & Baltimore, D. The Ikappa B-NF-kappa B signaling module: temporal control and selective gene activation. *Science* **298**, 1241–1245 (2002).
- Zabel, U. & Baeuerle, P. A. Purified human I kappa B can rapidly dissociate the complex of the NF-kappa B transcription factor with its cognate DNA. *Cell* **61**, 255–265 (1990).

23. Kearns, J. D., Basak, S., Werner, S. L., Huang, C. S. & Hoffmann, A. I κ B ϵ provides negative feedback to control NF- κ B oscillations, signaling dynamics, and inflammatory gene expression. *J. Cell Biol.* **173**, 659–664 (2006).
24. Basak, S. *et al.* A fourth I κ B protein within the NF- κ B signaling module. *Cell* **128**, 369–381 (2007).
25. Shih, V. F.-S. *et al.* Kinetic control of negative feedback regulators of NF- κ B/RelA determines their pathogen- and cytokine-receptor signaling specificity. *Proc. Natl Acad. Sci. USA* **106**, 9619–9624 (2009).
26. Alves, B. N. *et al.* I κ B $\{\nu\}$ is a key regulator of B cell expansion by providing negative feedback on cRel and RelA in a stimulus-specific manner. *J. Immunol.* **192**, 3121–3132 (2014).
27. Scheibel, M. *et al.* I κ B β is an essential co-activator for LPS-induced IL-1 β transcription *in vivo*. *J. Exp. Med.* **207**, 2621–2630 (2010).
28. Salimi-Moosavi, H., Rathanaswami, P., Rajendran, S., Toupikov, M. & Hill, J. Rapid affinity measurement of protein–protein interactions in a microfluidic platform. *Anal. Biochem.* **426**, 134–141 (2012).
29. Suyang, H., Phillips, R., Douglas, I. & Ghosh, S. Role of unphosphorylated, newly synthesized I kappa B beta in persistent activation of NF-kappa B. *Mol. Cell Biol.* **16**, 5444–5449 (1996).
30. Hertlein, E., Wang, J., Ladner, K. J., Bakkar, N. & Guttridge, D. C. RelA/p65 regulation of I κ B β . *Mol. Cell Biol.* **25**, 4956–4968 (2005).
31. Valovka, T. & Hottiger, M. O. p65 controls NF- κ B activity by regulating cellular localization of I κ B β . *Biochem. J.* **434**, 253–263 (2011).
32. Jones, S. & Thornton, J. M. Principles of protein-protein interactions. *Proc. Natl Acad. Sci. USA* **93**, 13–20 (1996).
33. Mintseris, J. & Weng, Z. Structure, function, and evolution of transient and obligate protein–protein interactions. *Proc. Natl Acad. Sci. USA* **102**, 10930–10935 (2005).
34. Shih, V. F.-S. *et al.* Control of RelB during dendritic cell activation integrates canonical and noncanonical NF- κ B pathways. *Nat. Immunol.* **13**, 1162–1170 (2012).
35. Basak, S., Shih, V. F.-S. & Hoffmann, A. Generation and activation of multiple dimeric transcription factors within the NF- κ B signaling system. *Mol. Cell Biol.* **28**, 3139–3150 (2008).
36. Almaden, J. *et al.* A Pathway switch directs BAFF signaling to distinct NF κ B transcription factors in maturing and proliferating B cells. *Cell Reports* **9**, 2098–2111 (2014).

Acknowledgements

We thank E. Komives and G. Ghosh (UCSD) for insightful discussions concerning I κ B–NF κ B interactions and NF κ B dimer association kinetics, and J.D. Vargas for critical reading and editing. This study was supported by the National Institutes of Health grant R01AI083463 (A.H.), P50 GM085763 (A.H.) and P01 GM071862 (A.H. and G.G.). R.T. was supported by the National Science Foundation Graduate Fellowship. J.D.K. was supported by an American Heart Association Predoctoral Fellowship.

Author contributions

Computational modelling work was performed by R.T. and J.D.K., and experimental work by C.L., K.N., S.B., R.T., D.V., K.N. and J.D.K., with supervision from A.H. and G.G. R.T. and A.H. wrote the manuscript, based on an early draft by J.D.K. A.H. planned and oversaw the project.

Additional information

Supplementary Information accompanies this paper at <http://www.nature.com/naturecommunications>

Competing financial interests: The authors declare no competing financial interests.

Reprints and permission information is available online at <http://npg.nature.com/reprintsandpermissions/>

How to cite this article: Tsui, R. *et al.* I κ B β enhances the generation of the low-affinity NF κ B/RelA homodimer. *Nat. Commun.* **6**:7068 doi: 10.1038/ncomms8068 (2015).