

ARTICLE

Received 16 Jun 2014 | Accepted 8 Oct 2014 | Published 19 Nov 2014

DOI: 10.1038/ncomms6508

Superconductivity in the vicinity of antiferromagnetic order in CrAs

Wei Wu^{1,*}, Jinguang Cheng^{1,2,*}, Kazuyuki Matsubayashi², Panpan Kong¹, Fukun Lin¹, Changqing Jin^{1,3}, Nanlin Wang^{1,3,4}, Yoshiya Uwatoko² & Jianlin Luo^{1,3}

One of the common features of unconventional superconducting systems such as the heavy-fermion, high transition-temperature cuprate and iron-pnictide superconductors is that the superconductivity emerges in the vicinity of long-range antiferromagnetically ordered state. In addition to doping charge carriers, the application of external pressure is an effective and clean approach to induce unconventional superconductivity near a magnetic quantum critical point. Here we report on the discovery of superconductivity on the verge of antiferromagnetic order in CrAs via the application of external pressure. Bulk superconductivity with $T_c \approx 2$ K emerges at the critical pressure $P_c \approx 8$ kbar, where the first-order antiferromagnetic transition at $T_N \approx 265$ K under ambient pressure is completely suppressed. The close proximity of superconductivity to an antiferromagnetic order suggests an unconventional pairing mechanism for CrAs. The present finding opens a new avenue for searching novel superconductors in the Cr and other transition metal-based systems.

¹Beijing National Laboratory for Condensed Matter Physics and Institute of Physics, Chinese Academy of Sciences, Beijing 100190, China. ²Institute for Solid State Physics, University of Tokyo, 5-1-5 Kashiwanoha, Kashiwa, Chiba 277-8581, Japan. ³Collaborative Innovation Center of Quantum Matter, Beijing, China. ⁴International Center for Quantum Materials, School of Physics, Peking University, Beijing 100871, China. * These authors contributed equally to this work. Correspondence and requests for materials should be addressed to J.C. (email: jgcheng@iphy.ac.cn) or to Y.U. (email: uwatoko@issp.u-tokyo.ac.jp) or to J.L. (email: jlluo@iphy.ac.cn).

Transition-metal oxides or pnictides are rich in novel and intriguing electronic behaviours due to multiple quantum orders and competing phenomena. Among the different electronic states, the emergence of superconductivity in the vicinity of other quantum orders is at the heart of the exotic physics. Superconductivity has been observed in a majority of 3d transition-metal compounds except for the Cr- or Mn-based compounds in the sense that the low-lying states near Fermi level are dominated by their 3d electrons. It is thus of high interest to explore possible superconductivity in these systems.

CrAs belongs to the large family of transition-metal pnictides with a general formula MX (M = transition metal, X = P, As, Sb), which form in either hexagonal NiAs-type ($B8_1$) or orthorhombic MnP-type ($B31$) structure (for review, see ref. 1 and references therein). At ambient conditions, CrAs adopts the MnP-type structure (inset of Fig. 1) with unit-cell parameters $a = 5.649$ Å, $b = 3.463$ Å and $c = 6.2084$ Å. Its crystallographic and magnetic properties have been extensively investigated during 1970s due to the observation at $T_N = 270 \pm 10$ K of a first-order antiferromagnetic transition^{1–4}, which is accompanied by discontinuous changes of lattice parameters. The most dramatic change is a sudden expansion of lattice constant b by $\sim 4\%$ below T_N ⁵. Neutron diffraction measurements established a double-helical magnetic structure propagating along the orthorhombic c axis with the Cr moment of $1.7 \mu_B$ lying essentially within the ab plane^{3,4}. The acquisition of large Cr moment below T_N has been rationalized as an itinerant to localized electron transition as a consequence of the sudden elongation of Cr–Cr separation along the b direction². Previous studies have demonstrated a close relationship between the Cr magnetism and orthorhombic b axis length in the CrX series; with decrease in the size of X atom and thus the b axis, the Cr moment decreases from the full moment of $3 \mu_B$ per Cr for CrSb to $1.7 \mu_B$ per Cr for CrAs, and finally to nonmagnetic for CrP¹. It seems that the magnetism of Cr in CrAs is located very close to the boundary of localized- to itinerant-electron transition. The coupled structural, magnetic and electronic degrees of freedom at T_N in CrAs make external pressure a very effective knob in fine tuning its ground-state

properties. Indeed, earlier high pressure studies have shown that the antiferromagnetic transition at T_N can be readily suppressed by pressure and vanishes completely at $P \sim 5$ kbar (ref. 6). Since exotic phenomena such as the unconventional superconductivity are frequently observed in the vicinity of a magnetic quantum critical point, we are motivated to explore in great detail the physical properties of antiferromagnetic CrAs as T_N is suppressed progressively under hydrostatic pressure.

Here, we show that bulk superconductivity with $T_c \approx 2$ K emerges at the critical pressure $P_c \approx 8$ kbar, where the first-order antiferromagnetic transition at T_N is completely suppressed. The close proximity of superconductivity to an antiferromagnetic order suggests an unconventional pairing mechanism for CrAs. As previous studies have shown that T_N of CrAs can be suppressed by chemical substitutions at either Cr or As site¹, our present work should open a new avenue for searching novel superconductors in the Cr and other transition metal-based systems.

Results

High-pressure resistivity. We measured the resistivity $\rho(T)$ of a number of CrAs single crystals under various hydrostatic pressures up to 21.4 kbar in a wide temperature range from 300 K down to 70 mK. The $\rho(T)$ data of one represented sample shown in Fig. 1a illustrated the variation of T_N with pressure (See the Methods section about how the pressure values at T_N are estimated). As seen in Fig. 1a, the first-order antiferromagnetic transition is manifested as a sudden drop of resistivity at $T_N = 264$ K upon cooling at ambient pressure. As indicated by the arrows, T_N decreases progressively with increasing pressure; the resistivity anomaly at T_N changes from a sudden drop for $P < 3$ kbar to a smoothly varied kink whose magnitude is also diminished gradually within the pressure range $3 < P < 7$ kbar. Such an evolution of the resistivity anomaly at T_N suggests a gradual crossover from strong to weak first-order transition, especially near the critical pressure where T_N vanishes. It should be noted that in the previous high pressure study on a

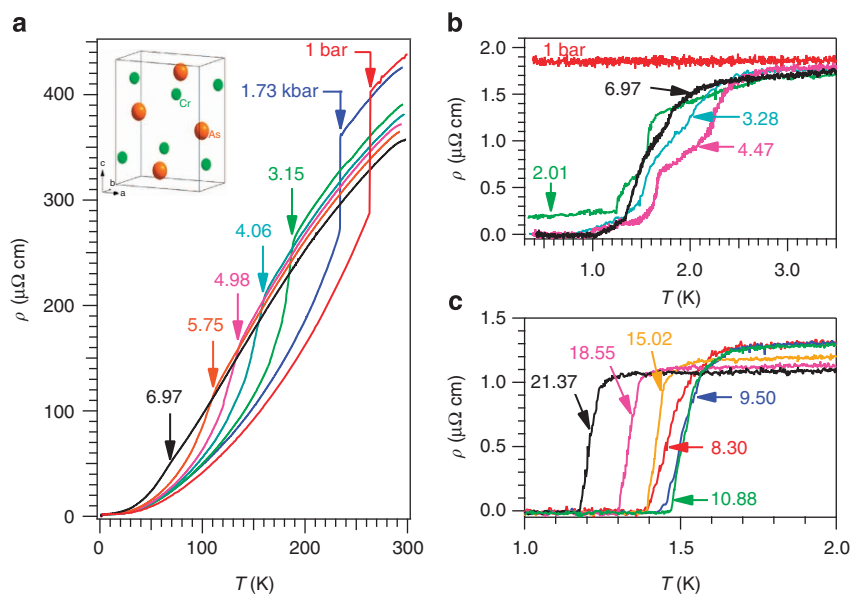


Figure 1 | High-pressure resistivity data. (a) Resistivity $\rho(T)$ of the CrAs single crystal under various hydrostatic pressures up to $P = 6.97$ kbar in the whole temperature range highlighting the variation with pressure of the antiferromagnetic transition temperature T_N indicated by the arrows. (b,c) $\rho(T)$ data at low temperatures in the whole investigated pressure range highlighting the evolution with pressure of the superconducting transition. The pressure values listed in a are the estimated pressure at T_N , see Methods for details. The pressure values given in b and c are determined directly from the superconducting transition of Pb. A schematic crystal structure of orthorhombic MnP-type CrAs is displayed in the inset of a.

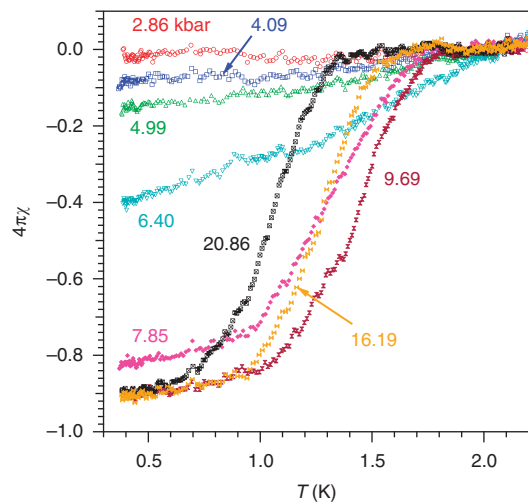


Figure 2 | AC magnetic susceptibility. Temperature dependence of the AC magnetic susceptibility $4\pi\chi$ of a CrAs single crystal under various hydrostatic pressures. The pressure values shown in the figure are determined directly from the superconducting transition of Pb.

polycrystalline sample T_N terminated at ~ 150 K under 5 kbar (ref. 6), whereas our measurements on a high-quality single-crystalline sample enabled us to track T_N down to 70 K at $P = 6.97$ kbar. Above this pressure, no anomaly can be discerned in resistivity at $T > 3$ K.

Our key finding of this study is the observation of superconductivity in CrAs with the application of high pressure. The $\rho(T)$ data shown in Fig. 1b,c depict explicitly how the superconductivity emerges and then evolves with pressure at low temperatures. Below T_N , $\rho(T)$ measured outside the pressure cell does not show any anomaly down to 350 mK, thus confirming the absence of superconductivity in CrAs at ambient pressure. Interestingly, when the sample was subjected to a minute pressure < 3 kbar, $\rho(T)$ starts to decrease below ~ 2.5 K and displays multi-step drops before reaching a constant, non-zero value near 1 K. The amplitude of resistivity drop grows progressively with pressure, and eventually reaches zero resistivity near 1 K at $P \approx 3$ kbar, signalling the occurrence of superconductivity. Upon further increasing the pressure in the range $3 < P < 7$ kbar where T_N remains finite, the superconducting transition is featured by similar multi-step drops; the onset temperature first increases and then decreases with pressure, while the zero-resistivity temperature $T_c^0 \approx 1$ K remains nearly constant. The multi-step feature fades away with further increasing pressure, and is finally changed to a single transition for $P > 8$ kbar where T_N vanishes completely. This indicated that the multi-step drop of resistivity at $P < 8$ kbar should be caused by the two-phase coexistence as confirmed below by the AC magnetic susceptibility. As seen in Fig. 1c, T_c^0 first increases and reaches a maximum of 1.47 K at $P = 10.88$ kbar, above which it decreases gradually and reaches 1.17 K at 21.37 kbar, the maximum pressure of the present study. It should be noted that the pressure-induced superconductivity in CrAs, as well as the peculiar features of resistivity shown in Fig. 1 are well reproducible as confirmed on three independent CrAs single crystals with the residual resistivity ratio $\text{RRR} > 200$.

AC magnetic susceptibility. The above resistivity results revealed that superconducting state coexists with the antiferromagnetically ordered state within a broad pressure range < 7 kbar; the progressive development of the resistivity drop and the multi-step

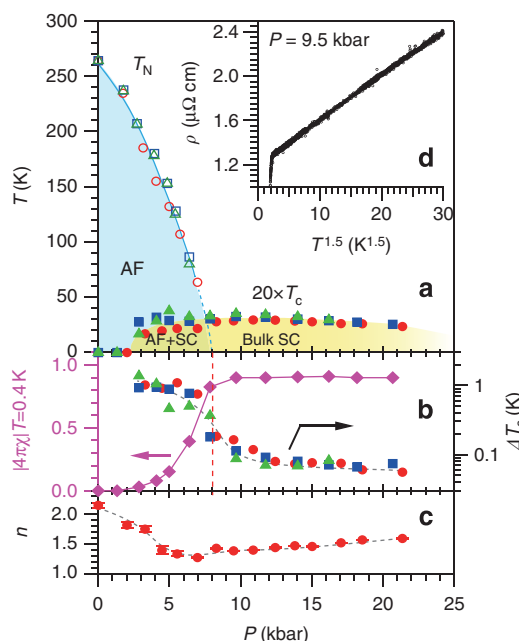


Figure 3 | Temperature–pressure phase diagram. (a) Pressure dependences of the antiferromagnetic (AF) transition temperature T_N and the superconducting (SC) transition temperature T_c for CrAs single crystals; T_c has been scaled by a factor of 20 for clarity. (b) The superconducting shielding fraction at 0.4 K, $|4\pi\chi|_{T=0.4\text{K}}$, and the superconducting transition temperature width, ΔT_c , as a function of pressure. Here ΔT_c is defined as the 10–90% superconducting transition width. (c) Pressure dependence of the low-temperature resistivity exponent, n , obtained from the power-law fitting to the normal-state resistivity below 10 K. (d) A plot of ρ versus $T^{-1.5}$ for the normal-state $\rho(T)$ curve at $P = 9.5$ kbar. The symbols of circle (red), square (blue) and triangle (green) in a–c represent three independent samples with residual resistivity ratio (RRR) = 240, 327 and 250, respectively.

feature of superconductivity transition signal the growth of superconducting state at the expense of the antiferromagnetic state. To gain insights into the competing nature of these two states and to further verify the bulk nature of the observed superconductivity, we resorted to AC magnetic susceptibility measurements that can probe the diamagnetic signal due to superconducting transition. As shown in Fig. 2, the diamagnetic signal starts to appear at $P > 3$ kbar, and the superconducting shielding fraction grows steadily with pressure, reaching $> 90\%$ of the sample volume at $P > 8$ kbar. These results thus confirmed directly the bulk nature of pressure-induced superconductivity in CrAs. In addition, the onset temperatures of the diamagnetic signal are also in excellent agreement with the $\rho(T)$ data shown in Fig. 1c.

Temperature–pressure phase diagram. On the basis of the above results, we can construct a temperature–pressure phase diagram for CrAs single crystal. As seen in Fig. 3, the first-order antiferromagnetic transition temperature $T_N = 264$ K at ambient pressure can be suppressed quickly by the application of external pressure; an extrapolation of $T_N(P)$ curve gives a critical pressure $P_c \approx 8$ kbar where T_N approaches zero temperature. At $P \geq P_c$, bulk superconductivity with shielding fraction $> 90\%$ is realized accompanied with an order of magnitude decrease of the 10–90% superconducting transition temperature width ΔT_c , as seen in Fig. 3b. In this pressure region, the superconducting transition temperature T_c exhibits a broad maximum at $P \sim 11$ kbar and

then decreases gradually with further increasing pressure. For $3 \text{ kbar} < P < P_c$, the superconducting state coexists with the anti-ferromagnetic state, and the volume fraction grows gradually at the expense of the other. It is interesting to note that the superconducting state in this pressure region is characterized by a higher onset temperature for superconductivity, Fig. 1b.

Discussion

The phase diagram of CrAs shown in Fig. 3a resembles that of many unconventional superconducting systems^{7–9}, including the heavy-fermion, high- T_c cuprate and iron-pnictide superconductors. As a universal trend in these systems, superconductivity emerges in the vicinity of a quantum critical point (QCP) where a high-temperature ordered state involving spin, charge or lattice degrees of freedom is suppressed via applying external tuning parameter δ , such as doping charge carrier, chemical or physical pressure. In addition, the superconducting transition temperature T_c always passes through a maximum value at some critical δ_c , leading to a dome-shaped T_c - δ phase diagram. The proximity of superconductivity to a QCP lends strong support for the unconventional mechanism for Cooper pairing via the critical fluctuations. Despite the first-order nature of the antiferromagnetic transition in CrAs, the following observations suggested the presence of strong antiferromagnetic fluctuations near the critical pressure P_c and the possible unconventional pairing mechanism.

First, we found that within a large pressure regime of $3 < P < 21 \text{ kbar}$ where superconductivity takes place, the normal-state $\rho(T) < 10 \text{ K}$ follows the power-law relationship: $\rho(T) = \rho_0 + AT^n$ with the exponent n falling in the range 1.5 ± 0.1 , as shown in Fig. 3c. This exponent is very close to the value predicated for incoherent scattering of quasiparticle via magnetic interactions in three-dimensional antiferromagnets^{10,11}. One of the representative $\rho(T)$ data at 9.5 kbar is plotted in the form of ρ versus $T^{1.5}$ in Fig. 3d. In our previous study¹², we have shown that $\rho(T)$ of CrAs single crystal at ambient pressure follows the Fermi liquid behaviour at $T < 10 \text{ K}$, with the Kadowaki–Woods ratio A/γ^2 falling onto the universal line of many correlated metals, where γ is the electronic specific heat coefficient. Our fitting to the ambient $\rho(T)$ confirms the previous results with $n = 2.15(4)$. The observation of $n < 2$ has been taken as a characteristic signature for non-Fermi liquid metals near a magnetic QCP¹³.

Second, the antiferromagnetic fluctuations seem to be abundant above T_N in that the magnetic susceptibility of CrAs keeps increasing with temperature up to at least 700 K under ambient pressure¹². As a matter of fact, such an increasing behaviour of magnetic susceptibility has been found to be universal in the recently discovered iron-based superconductors, and regarded as an indication for antiferromagnetic fluctuations⁹. In this sense, these spin fluctuations would be optimized near the critical pressure where the antiferromagnetic order of CrAs is suppressed completely. Therefore, the critical spin fluctuations associated with the quantum criticality could act as an important glue medium for Cooper pairing.

Last but not the least, the pressure-induced superconductivity in CrAs is found to be sensitive to the residual resistivity ρ_0 . Our initial high pressure studies on the CrAs crystals with $\rho_0 \approx 10 \mu\Omega \text{ cm}$ (residual resistivity ratio ≈ 40 –50) displayed indications of superconductivity at $T < 1 \text{ K}$, but no zero resistivity can be achieved. We finally confirmed the bulk superconductivity with higher T_c on high-quality CrAs crystals having much reduced $\rho_0 \approx 1$ –2 $\mu\Omega \text{ cm}$. Such a sensitivity of superconductivity and the associated T_c to disorders (impurities and/or defects) would imply

an unconventional pairing mechanism as found in the heavy-fermion superconductors⁷. In these cases, superconductivity is expected to be destroyed when the electron mean free path l_{mfp} is smaller than the superconducting coherent length ξ . Our rough estimations of l_{mfp} and ξ seem to verify such a scenario. We first estimated ξ near the optimal pressure from the upper critical field $\mu_0 H_{c2}$, which is determined from the $\rho(T)$ curves under different magnetic fields, Fig. 4a. Figure 4b displayed the $\mu_0 H_{c2}$ as a function of T_c at $P = 9.5 \text{ kbar}$. Here, we determined T_c as the middle point between 10 and 90% drop of resistivity. As shown in Fig. 4b, $\mu_0 H_{c2}$ versus T_c can be fitted well with the empirical formula: $\mu_0 H_{c2}(T) = \mu_0 H_{c2}(0) \{1 - [T_c/T_c(0)]^\alpha\}$, with $\mu_0 H_{c2}(0) = 0.96(2) \text{ T}$, $T_c(0) = 1.506(6) \text{ K}$ and $\alpha = 1.41(6)$, respectively. The obtained $\mu_0 H_{c2}(0)$ allows us to estimate the Ginzburg–Landau coherence length $\xi = 185 \text{ \AA}$ according to the relationship: $\mu_0 H_{c2}(0) = \Phi_0 / 2\pi\xi^2$, where $\Phi_0 = 2.067 \times 10^{-15} \text{ Web}$ is the magnetic flux quantum. On the basis of the measured Hall coefficient $|R_H| = 2.6 \times 10^{-10} \text{ m}^3 \text{ C}^{-1}$ at 5 K, on the other hand, l_{mfp} values of ~ 766 and 153 \AA are obtained for the clean ($\rho_0 = 2 \mu\Omega \text{ cm}$) and dirty ($\rho_0 = 10 \mu\Omega \text{ cm}$) samples, respectively,

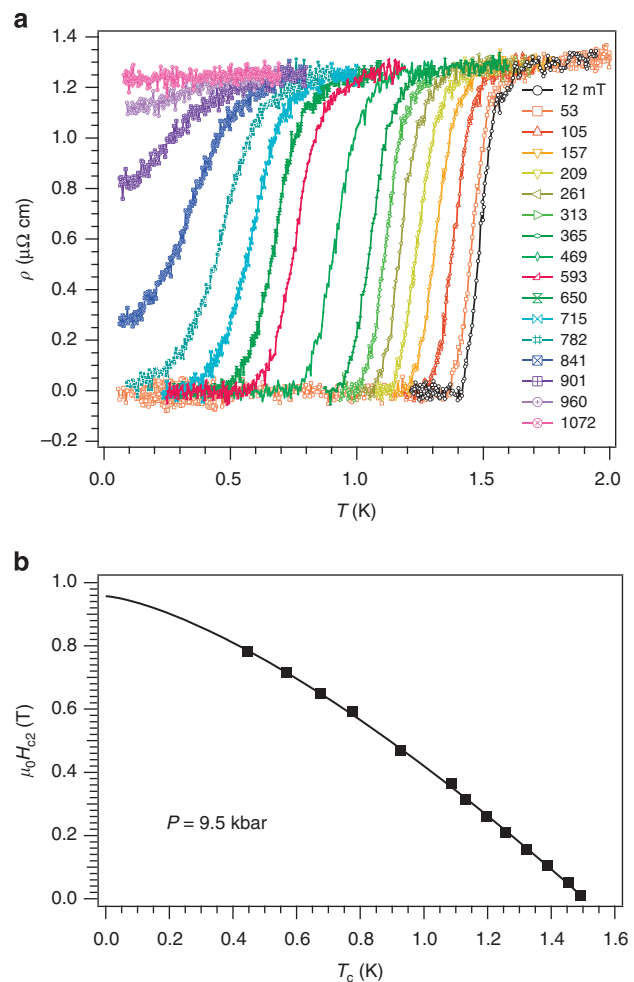


Figure 4 | Upper critical field. (a) Temperature dependence of resistivity $\rho(T)$ under different magnetic fields at $P = 9.5 \text{ kbar}$. Here T_c values at different magnetic fields are determined as the middle point between 10 and 90% resistivity drop of the superconducting transition. (b) Temperature dependence of the upper critical field $\mu_0 H_{c2}$ for CrAs single crystal at 9.5 kbar. The solid line in **b** is a fitting curve with the empirical formula: $\mu_0 H_{c2}(T) = \mu_0 H_{c2}(0) \{1 - [T_c/T_c(0)]^\alpha\}$, with $\mu_0 H_{c2}(0) = 0.96(2) \text{ T}$, $T_c(0) = 1.506(6) \text{ K}$ and $\alpha = 1.41(6)$, respectively.

by assuming a spherical Fermi surface with one kind of charge carrier. In spite of large uncertainty in the above estimations, we confirmed that bulk superconductivity can be seen only in samples with $l_{\text{mfp}} > \xi$.

Although superconductivity has been reported for some chromium alloys¹⁴, for example, Cr-Rh and Cr-Re, to the best of our knowledge, CrAs is the first superconductor among the Cr-based compounds. Unlike the alloys, most of the density of states near Fermi level for CrAs is attributed to the Cr-3d states¹⁵, which makes the magnetic degree of freedom relevant for the observed superconductivity. As a matter of fact, the itinerant-electron antiferromagnetism of chromium metal itself has been the subject of much interest for over 50 years¹⁶. To date, no unambiguous evidence of superconductivity has been observed near the QCP when the spin-density-wave antiferromagnetism of Cr is suppressed by either high pressure^{17,18} or chemical doping¹⁹. In this regard, further theoretical and experimental studies are needed to elucidate the pairing symmetry and the dominant mechanism, especially the role of magnetism, for the observed superconductivity in CrAs.

Methods

Sample preparation. CrAs single crystals were grown out of the Sn flux. Details about the crystal growth procedures and sample characterizations at ambient pressure have been given elsewhere¹².

High pressure measurements. High pressures were generated with a self-clamped piston-cylinder cell made of nonmagnetic BeCu and NiCrAl alloys²⁰. Glycerol with a room temperature solidification pressure far > 2 GPa was chosen as the pressure transmitting medium to minimize the shear stress when changing pressures at room temperature. The pressure (P) inside the piston-cylinder cell was monitored by detecting the superconducting transition temperature (T_c) of a piece of Pb according to the equation: P (kbar) = $(T_0 - T_c)/0.0365$, where $T_0 = 7.20$ K is the T_c of Pb at ambient pressure. It should be noted that the pressure inside the clamp-type pressure cell is not constant within the whole temperature range. It has been shown that the pressure drops ~ 3 kbar upon cooling down from room temperature to 4.2 K (ref. 21). Since the antiferromagnetic transition of CrAs spans over a large temperature range under pressures, we have to estimate the pressure at different temperatures properly. According to ref. 21, the pressure is nearly constant below 90 K and it increases linearly to 300 K with a slope of 0.012 kbar K^{-1} for pressure < 8 kbar. The pressure values at T_N shown in Fig. 1a are estimated by the extrapolation: $P(T_N) = P(\text{Pb}) + 0.012 (T_N - 90)$. The low temperatures down to 70 mK were reached by attaching the pressure cell to a Heliox-AC insert (Oxford Instrument) or dilution refrigerator. The resistivity was measured by the conventional four-probe method with the current applied along the orthorhombic a axis. AC magnetic susceptibility was measured with a mutual induction method at a fixed frequency of 317 Hz with a modulation field of ~ 2 Oe. The diamagnetic signal due to the superconductivity transition was estimated by comparing with the diamagnetic signal of Pb, which served as a pressure manometer, with nearly the same size as the CrAs sample.

References

- Motizuki, K., Ido, H., Itoh, T. & Morifuji, M. Electronic structure and magnetism of 3d-transition metal pnictides. *Springer Ser. Mater. Sci.* **131**, 1–142 (2009).
- Boller, H. & Kallel, A. First order crystallographic and magnetic phase transition in CrAs. *Solid State Commun.* **9**, 1699–1706 (1971).
- Selte, K., Kjekshus, A., Jamison, W. E., Andresen, A. F. & Engebretsen, J. E. Magnetic structure and properties of CrAs. *Acta Chem. Scand.* **25**, 1703–1714 (1971).
- Watanabe, H., Kazama, N., Yamaguchi, Y. & Ohashi, M. Magnetic structure of CrAs and Mn-substituted CrAs. *J. Appl. Phys.* **40**, 1128–1129 (1969).

- Kazama, N. & Watanabe, H. Magnetic properties of $\text{Cr}_{1-x}\text{Mn}_x\text{As}$ system. *J. Phys. Soc. Jpn* **30**, 1319–1329 (1971).
- Zavadskii, E. A. & Sibarova, I. A. Some features of phase transition in chromium arsenide at high pressures. *Sov. Phys. JETP* **51**, 542–547 (1980).
- Mathur, N. D. *et al.* Magnetically mediated superconductivity in heavy fermion compounds. *Nature* **394**, 39–43 (1998).
- Jin, K., Butch, N. P., Kirshenbaum, K., Paglione, J. & Greene, R. L. Link between spin fluctuations and electron pairing in copper oxide superconductors. *Nature* **476**, 73–75 (2011).
- Paglione, J. & Greedan, J. E. High-temperature superconductivity in iron-based materials. *Nat. Phys.* **6**, 645–658 (2010).
- Moriya, T. *Spin Fluctuations in Itinerant Electron Magnetism* (Springer-Verlag, 1985).
- Moriya, T. & Takimoto, T. Anomalous properties around magnetic instability in heavy-electron systems. *J. Phys. Soc. Jpn* **64**, 960–969 (1995).
- Wei, W. *et al.* Low temperature properties of pnictide CrAs single crystal. *Sci. China* **53**, 1207–1211 (2010).
- Lohneysen, H. v., Rosch, A., Vojta, M. & Wölfle, P. Fermi-liquid instabilities at magnetic quantum phase transition. *Rev. Mod. Phys.* **79**, 1015 (2007).
- Matthias, B. T., Genalle, T. H., Compton, V. B., Corenzwit, E. & Hull, J. G. W. Superconductivity of chromium alloys. *Phys. Rev.* **128**, 588–590 (1962).
- Ito, T., Ido, H. & Motizuki, K. Electronic structure and magnetic properties in CrX ($X = \text{P, As, and Sb}$). *J. Magn. Magn. Mater.* **310**, e558–e559 (2007).
- Fawcett, E. Spin-density-wave antiferromagnetism in chromium. *Rev. Mod. Phys.* **60**, 209–283 (1988).
- Jaramillo, R. *et al.* Breakdown of the Bardeen-Cooper-Schrieffer ground state at a quantum phase transition. *Nature* **459**, 405–409 (2009).
- Jaramillo, R., Feng, Y., Wang, J. & Rosenbaum, T. F. Signatures of quantum criticality in pure Cr at high pressure. *Proc. Natl Acad. Sci. USA* **107**, 13631–13635 (2010).
- Yeh, A. *et al.* Quantum phase transition in a common metal. *Nature* **419**, 459–462 (2002).
- Uwatoko, Y. Design of a piston cylinder type high-pressure cell. *Rev. High Press. Sci. Technol.* **12**, 306–311 (2002).
- Thompson, J. D. Low-temperature pressure variation in a self-clamping pressure cell. *Rev. Sci. Instrum.* **55**, 231–234 (1984).

Acknowledgements

We thank Y.P. Wang, Z. Fang, J.Q. Yan, J.S. Zhou, J.B. Goodenough, N. Mori, T. Kato, T. Kanomata, M. Matsuda, F. Steglich, Q. Si, P. J. Sun, G. M. Zhang and L. Yu for fruitful discussions. Work at IOP/CAS was supported by the National Science Foundation of China (Grant Nos. 11025422, 11304371, 11220101003), the National Basic Research Program of China (Grant Nos. 2014CB921500, 2011CB921700) and the Strategic Priority Research Program of the Chinese Academy of Sciences (Grant Nos. XDB01020300, XDB07000000). Work at ISSP/UT was partially supported by Grant-in-Aid for Scientific Research, KAKENHI (Grant Nos. 23340101, 252460135), the Grant-in-Aid for Young Scientist B (No. 24740220) from the Ministry of Education, Culture, Sports, Science and Technology and the JSPS fellowship for foreign researchers (Grant No. 12F02023).

Author contributions

W.W., J.L. and N.W. synthesized the high-quality CrAs single crystals and initiated the present study; J.C. and K.M. measured the resistivity and AC magnetic susceptibility under high pressure with piston-cylinder cell and confirmed the bulk superconductivity; F.L. performed the resistivity, DC magnetic susceptibility and Hall coefficient measurements at ambient pressure; P.K. and C.J. carried out the initial high-pressure resistivity measurements with diamond anvil cell; J.C. and J.L. wrote the paper with contributions from all the authors. J.L. and Y.U. supervised the project.

Additional information

Competing financial interests: The authors declare no competing financial interests.

Reprints and permission information is available online at <http://npg.nature.com/reprintsandpermissions/>

How to cite this article: Wu, W. *et al.* Superconductivity in the vicinity of antiferromagnetic order in CrAs. *Nat. Commun.* **5**:5508 doi: 10.1038/ncomms6508 (2014).