

ARTICLE

Received 20 Nov 2012 | Accepted 7 Feb 2013 | Published 5 Mar 2013

DOI: 10.1038/ncomms2579

A hydrothermal anvil made of graphene nanobubbles on diamond

Candy Haley Yi Xuan Lim^{1,2}, Anastassia Sorokin¹, Qiaoliang Bao¹, Ang Li³, Kai Zhang¹, Milos Nesladek⁴ & Kian Ping Loh¹

The hardness and virtual incompressibility of diamond allow it to be used in high-pressure anvil cell. Here we report a new way to generate static pressure by encapsulating single-crystal diamond with graphene membrane, the latter is well known for its superior nano-indentation strength and in-plane rigidity. Heating the diamond-graphene interface to the reconstruction temperature of diamond ($\sim 1,275$ K) produces a high density of graphene nanobubbles that can trap water. At high temperature, chemical bonding between graphene and diamond is robust enough to allow the hybrid interface to act as a hydrothermal anvil cell due to the impermeability of graphene. Superheated water trapped within the pressurized graphene nanobubbles is observed to etch the diamond surface to produce a high density of square-shaped voids. The molecular structure of superheated water trapped in the bubble is probed using vibrational spectroscopy and dynamic changes in the hydrogen-bonding environment are observed.

¹Department of Chemistry, Graphene Research Centre, National University of Singapore, 3 Science Drive 3, Singapore 117543, Singapore. ²NUS Graduate School for Integrative Sciences and Engineering, 28 Medical Drive #05-01, Singapore 117597, Singapore. ³Bruker Singapore, 11 Biopolis Way #10-10 Helios, Singapore 138667, Singapore. ⁴IMOMEC, Hasselt University Wetenschapspark, Diepenbeek B 3590, Belgium. Correspondence and requests for materials should be addressed to K.P.L. (email: chmlohkp@nus.edu.sg).

Graphene is commonly thought of as a two-dimensional carbon flatland. This ideal picture, however, is valid only in special cases like suspended graphene^{1–3}, graphene grown epitaxially on SiC⁴ or supported on low-surface energy substrate like hexagonal boron nitride^{5,6}. In fact, monolayer graphene is inclined towards deformation in the third dimension because of its large ratio of in-plane rigidity to bending rigidity. In most cases, the substrate supporting graphene induces buckling under compression and creates ripples and blisters, which sets a limit on the mobility of its charge carriers due to flexural phonons. A recent study by Pan *et al.*⁷ observed sub-micron bubbles due to the biaxial compressive strain in the graphene/hexagonal boron nitride heterostructure after thermal cycling. Compressive strain between the lattice-mismatched Ru and graphene creates a buckling instability, which manifests as periodic blistering (Moire humps) on the sheet^{8,9}; these blisters can be sintered to produce geometrically shaped bubbles on the metal¹⁰, giving rise to electrodynamics that are coupled to the strain texture. Although the strain properties of the bubbles have been studied using spectroscopic methods, the physical properties of trapped species inside the bubble have not been investigated. One interesting possibility, which has not been considered thus far, is the reactivity of the trapped fluid in the impermeable graphene bubble. The ability of graphene to seal the interface between itself and the supporting platform ensures the mechanical stability of these bubbles and provides a unique anvil cell for probing the dynamics of fluids trapped within this impermeable membrane, at conditions beyond the critical point of the fluid.

In almost all reported cases to date, the occurrence of the bubbles is sporadic over the graphene surface^{11,12}. To record sufficient signal strength when probing the molecular structure of water trapped within each bubble, a high areal density of nanobubbles is needed. The diamond–graphene interface is selected to meet this requirement. First, the lattice mismatch between diamond and graphene will produce interfacial stress, which induces periodic rippling on graphene. Second, covalent

bonding between the two phases can occur when the surface of diamond is reconstructed thermally. Although the phases of diamond and graphite are known to coexist in surface-graphitized nanodiamond particles or during the initial nucleation stages of diamond growth^{13–16}, there is no clear insight into how graphene interfaces with diamond both structurally and electronically. The metallic-sp² and dielectric-sp³ interface offers the perfect environment for studying the complex interplay between electronic and lattice degrees of freedom for the creation of new functionalities. Here we transfer a chemical vapour deposited (CVD)-grown graphene monolayer onto single-crystal diamond (100) and thermally anneal the interface to the reconstruction temperature of diamond to study the morphological evolution at the interface. We show that interfacial bonding results in the growth of high-density nanobubbles across the graphene sheet. The resultant nanobubble ‘mat’ has a distinct topographical and electronic landscape. Most interestingly, each graphene nanobubble (GNB) that interfaces with diamond acts as a hydrothermal anvil cell: the water entrapped is transformed into compressed, hot water (supercritical) that is highly corrosive to even one of the hardest known materials, diamond.

Results

GNBs on diamond. A consequence of graphene being a soft membrane is that it can be strain-engineered to become highly corrugated by modifying its adhesion to the substrate. A CVD-grown graphene monolayer sheet was transferred onto a diamond (100) crystal. After annealing the graphene–diamond interface at 1,275 K for 45 min in ultrahigh vacuum, GNBs with a density of $\sim 8 \times 10^{10} \text{ cm}^{-2}$ (Fig. 1) appear. Each GNB measures about $\sim 2 \text{ nm}$ in height and has diameters that range from 5 to 30 nm (Fig. 1c,d). The annealing temperature of 1,275 K causes the dehydrogenation of the hydrogen-terminated diamond (100). Dangling bonds, which are created during dehydrogenation, bond instantaneously with graphene sheet, and the non-bonded part of the graphene sheet buckles to relieve the compressive stress

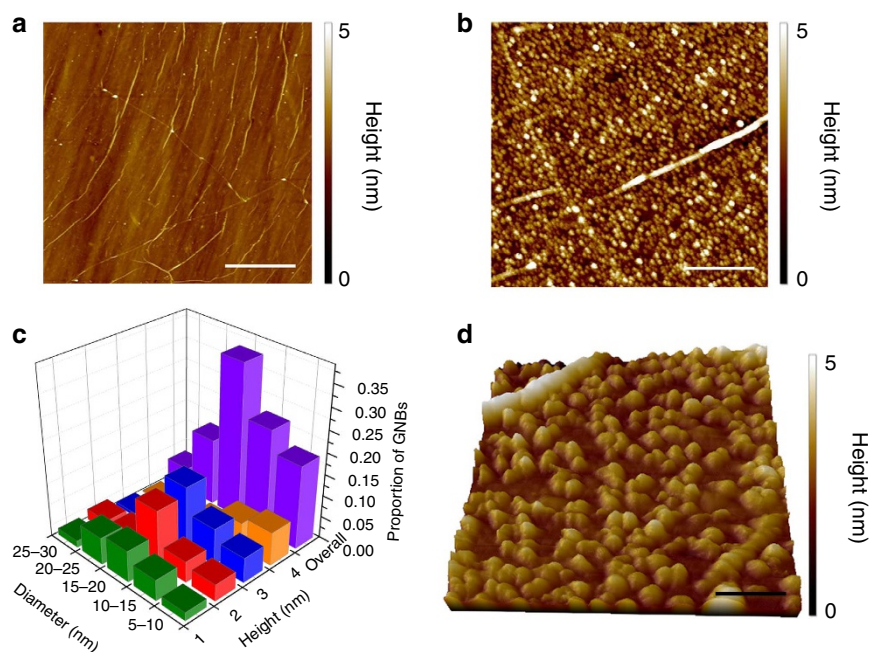


Figure 1 | AFM images of GNBs. (a) Topography of G on diamond after transfer. (b) Topography of GNBs on diamond. Scale bar, 500 nm (a and b). (c) Histogram of the diameter and height distribution of GNBs and (d) High-resolution three-dimensional topography representation of GNBs on diamond. Scale bar, 100 nm.

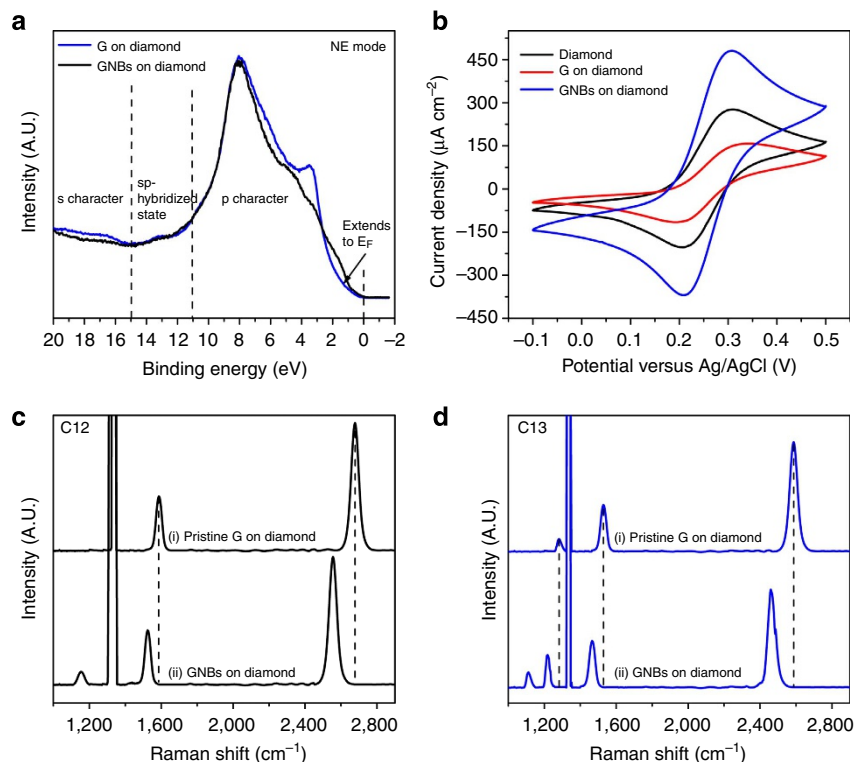


Figure 2 | Probing the electronic structure and properties before and after the formation of GNBs. (a) Valence bands of flat G and GNB on diamond. (b) Electrochemical cyclic voltammetry of diamond, graphene-on-diamond and GNBs-on-diamond using 1.0 mM Fe(CN)₆^{3-/4-} in 1 M KCl. (c) C12 Raman spectra of (i) flat graphene-on-diamond before GNB formation, (ii) GNBs on diamond and (d) C13 Raman spectra of (i) flat graphene-on-diamond before GNB formation and (ii) GNBs on diamond.

arising from the interfacial bonding. This reconstruction process happens spontaneously once the interface is activated thermally, as can be seen from the molecular dynamic (MD) simulations presented later (Fig. 4). We have carried out control studies on mechanically exfoliated graphene and found that GNBs of similar size and density can be generated for wet-transferred exfoliated graphene sheet on diamond, thus the bubble formation is not specifically influenced by the grain boundaries because the sizes of crystalline domains are expected to be quite different in CVD and exfoliated graphene (Supplementary Fig. S1). Valence band spectroscopy in Fig. 2a revealed that the intensity of the characteristic *p* orbital peak in graphene was reduced with the formation of GNBs; we deduce that this is due to partial re-hybridization of its molecular orbitals following interfacial bonding with diamond.

Strained GNBs. Strain, which affects the phonon frequency and which depends on the anharmonicity of the interatomic potentials, can be studied using Raman spectroscopy¹². *Sp*²-hybridized CVD graphene layer is characterized by its G, D and 2D (second-order D peak) peaks, which reside at 1,580, 1,360 and 2,680 cm⁻¹, respectively¹⁷. G peak corresponds to the doubly degenerated E_{2g} phonon at the Brillouin zone centre. The 2D peak originates from a scattering process where momentum conservation is obtained by the participation of two phonons with opposite wavevectors (*q* and $-q$). The D peak is usually selection-rule forbidden but is activated by lattice defects. Raman spectrum was recorded using a scanning atomic force microscope (AFM)-Raman probe so that the Raman features collected from a region that is covered densely by the GNB can be contrasted with another region where the graphene is relatively flat. Figure 2c shows that the Raman spectrum collected from the GNB-covered

region is red-shifted as compared with spectrum recorded at the flat regions. This can be explained by the elongation of C–C bonds in the tensile strained GNB. In particular, the G-peak position decreases from 1,586 to 1,525 cm⁻¹, whereas the 2D band shifts from 2,678 to 2,553 cm⁻¹ when moving from the flat to curved regions. The full-width at half-maximum of the 2D peak remains unchanged at about 30 cm⁻¹. These observations suggest that the lattice of graphene is biaxially strained¹⁸. Using $d\omega/d\varepsilon$, where ω is the Raman frequency and ε is the % strain applied to CVD graphene¹⁹, the Grüneisen parameter γ was calculated to be $\gamma = 1.30$ using the equation²⁰ $\gamma = -1/\omega_0(d\omega/d\varepsilon)$, where ω_0 is the Raman frequency with no applied strain. The strain value experienced by GNBs is then calculated to be $\sim 1.5\%$. However, the strain value probed by Raman spectroscopy here is underestimated because of the large laser spot size of the Raman probe relative to individual nanobubbles. Alternatively, the strain quantification of each individual GNB can be judged from its physical parameters. Because $\sigma = pr^2/2th$, strain is related to stress by $\varepsilon = (1 - \nu^2)/E\sigma$, where σ is the stress experienced at the apex of the graphene bubble, P is the differential pressure across the membrane responsible for the magnitude of deflection, r is the radius of the GNB, t is the thickness of graphene and h is the height of GNB. Using AFM to determine the mean r and h of the bubbles, ε was estimated to be $\sim 6\%$ for the GNB.

Besides the commonly observed G and 2D bands in pristine graphene, an unusual peak residing at $\sim 1,150$ cm⁻¹ is observed to emerge upon the formation of GNBs (Fig. 2c). This peak is often recognized as the fingerprint band of nanocrystalline diamond crystals. Ferrari *et al.*²¹ assigned it to mixed *sp*³–*sp*² bonded phases and trans-polyacetylene groups present on the surface and grain boundaries of nanocrystalline diamond. One possibility is the bonding of diamond to graphene breaks the honeycomb sheet into mixed *sp*³–*sp*² bonded phases, and

trans-polyacetylene domains appear on the modified graphene, which is bonded to diamond. At the same time, a widening of the full-width at half-maximum of the $1,332\text{ cm}^{-1}$ peak (Fig. 2c) is observed with the growth of GNBs, and this can be attributed to the increased density of defects following interfacial bonding. To

avoid the overlap between the defect peak of graphene and the first-order phonon peak of single-crystal diamond (situated at $1,332\text{ cm}^{-1}$), the Raman spectrum of C13-enriched graphene was recorded. The D peak of graphene, which is defect-related, is observed to increase with the formation of GNBs (Fig. 2d) and similar downshifting of the G and 2D peaks is also observed for the curved regions of the GNBs.

Table 1 | Calculated apparent heterogeneous electron-transfer rate constants and capacitances.

Electrode	ΔE_p (mV)	Rate constant k (cm s^{-1})	Capacitance at 0.3 V ($\mu\text{F cm}^{-2}$)
Diamond	105	0.0740	207.7
G on diamond	146	0.00277	34.27
GNBs on diamond	89	0.0909	397.4

Unique properties of GNBs. Pristine graphene shows excellent in-plane electrical conductivity. However, because of the anisotropic nature of its electron delocalization, it is known to be electrochemically sluggish for charge transfer in the direction normal to its basal plane²². An exception is found, however, in the case of GNB, because its strained surfaces means that the flat-lying $2p$ orbitals are distorted, and midgap states will be created to

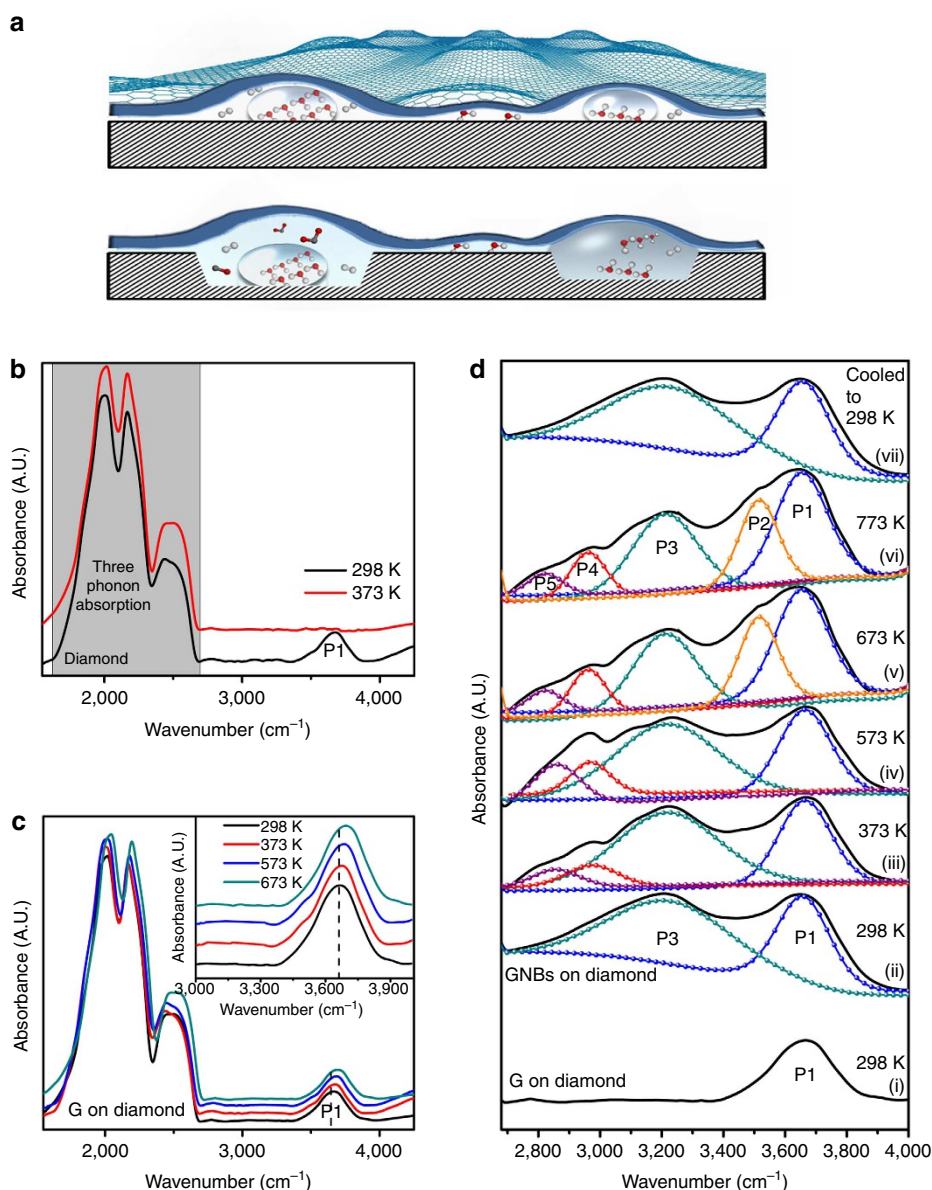


Figure 3 | Schematic diagram and vibrational spectroscopy of graphene and diamond. (a) Schematic representation showing water cluster in GNB and weakly interacted water molecules underneath flat G graphene on diamond (top panel). Etching of diamond by supercritical water (bottom panel). FTIR spectra showing OH-stretching peak of water measured on (b) diamond, where raising temperature to 373 K results in the desorption of water (c) Flat G on diamond showing peak at $3,650\text{ cm}^{-1}$ due to the presence of trapped, weakly bonded water molecules; (d) (i) Flat G on diamond; (ii)-(vi) After formation of GNBs on diamond and heating the GNB at a range of temperatures and (vii) Cooling down to room temperature.

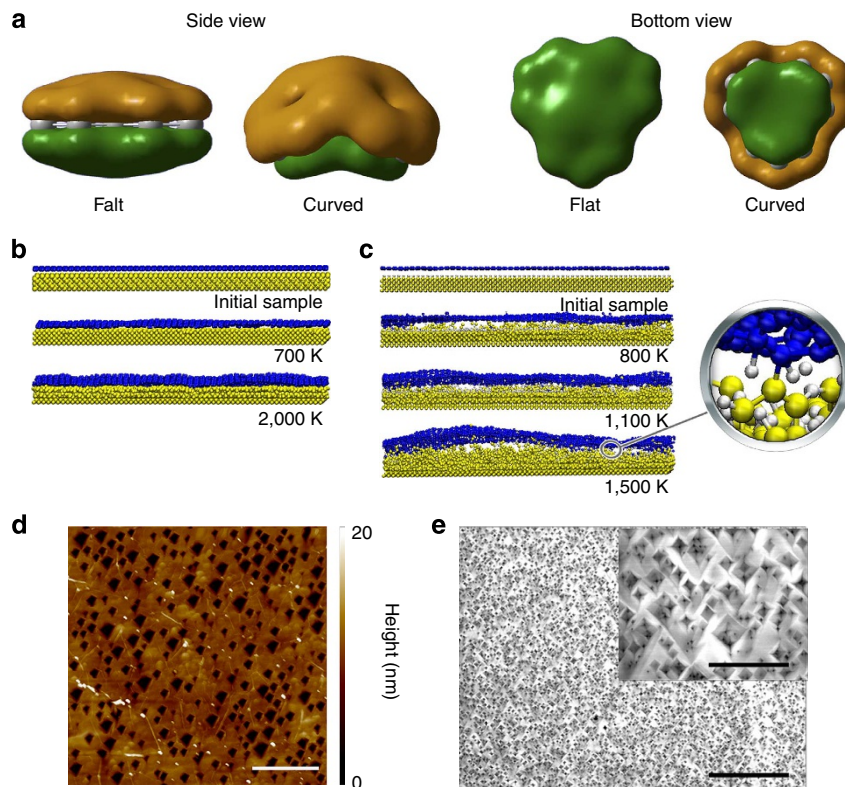


Figure 4 | GNB formation, growth and void generation on diamond. (a) Density functional theory simulation of ground electronic states of flat and curved graphene at B3LYP/6-31G* level. (b,c) MD simulation of the buckling of graphene on diamond (b) Graphene on C(100) – (2 × 1). (c) Graphene on dihydride-terminated diamond (denoted as 2H C(100) – (2 × 1), where bubble formation can be seen after heating. (d) AFM topography image of voids generated on diamond and (e) Scanning electron microscope image of etched diamond, inset is image zoomed in by 20 times. Scale bar, 0.3, 1 and 0.05 μm (d,e and inset of e, respectively).

which enhanced charge transfer can occur. The curvature in GNB also causes an asymmetric distribution of π electrons outside and inside graphene sheet²³, bestowing greater electrochemical reactivity on its exterior. Cyclic voltammetry of $\text{Fe}(\text{CN})_6^{3-/4-}$ redox couple was selected to examine the heterogenous charge-transfer mechanism before and after the formation of GNBs. In this case, the graphene sheet is transferred to a conducting, boron-doped diamond crystal. Using an inner sphere redox couple, which is sensitive to both the density of electronic states and surface microstructure, charge-transfer kinetics can be calculated from the peak-to-peak separation in the voltammograms (Fig. 2b). The results show that the charge-transfer rate follows the order of: GNBs on diamond > diamond > flat G on diamond, as summarized in Table 1. The cathodic and anodic currents of GNBs on boron-doped diamond electrode (Supplementary Fig. S2) show a linear relationship with the square root of the scan rate ranging from 25 to 125 mV s^{-1} , which is in good agreement with the Randles Sevcik equation describing reversible reactions controlled by semi-infinite linear diffusion. Boron-doped diamond is known to be a good electrode for electrochemistry, but what is striking here is the enhanced electrochemical response when its surface is modified by GNBs.

Insights into the formation of GNBs. The GNB-on-diamond sample was introduced into a Fourier transform infrared spectroscopy (FTIR) *in-situ* cell evacuated to 1×10^{-4} Torr. FTIR measurements reveal that residual water from the graphene-transfer process is trapped at the GNB–diamond interface because of the impermeability of graphene²⁴ (Fig. 3d).

Surface-physisorbed water typically desorbs readily in vacuum once the sample is heated slightly due to its weak adsorption energies on hydrophobic surface. However, we observed that the water-related OH vibrational bands persist up to the highest heating temperature in GNB-on-diamond (>773 K); this is possible only if the water molecules are trapped at the GNB–diamond interface. The observation of trapped water echoes a recent study that demonstrated the imaging of trapped water between two graphene membranes using high-resolution transmission electron microscopy²⁵. It is worth mentioning that the impermeability of the graphene membrane to atoms and molecules has been predicted by Leenaerts *et al.*²⁶ using first-principles density functional theory investigation.

The OH stretch of water presents an extremely broad band between 3,000 and 3,700 cm^{-1} , which is usually described by the four state model²⁷ in terms of the strength of hydrogen bonding. The intra-molecular OH stretch is highly dependent on the hydrogen-bond coordination of the proton²⁸. A strong hydrogen bonding results in a weakening of the OH oscillator, a red shift in energy and a broadening of the spectral peak. As shown in Fig. 3d, a relatively sharp peak labelled as P1 at $\sim 3,650 \text{ cm}^{-1}$, which is characteristic of free OH bond of water molecules, is observed at the bare diamond surface but this peak vanishes upon slight heating, and only the intrinsic 3 phonon absorption peaks of diamond²⁹ (Fig. 3b) remain. Thus, we can conclude that physisorbed water desorbs completely from the surface at elevated temperatures. Peak P1 is also observed at diamond surface encapsulated by flat graphene sheet (Fig. 3c), but in this case, it survives even after high-temperature annealing, suggesting that the water is trapped at the graphene–diamond interface.

The persistence of P1 as temperature increases suggests that a large body of water molecules adsorbing on hydrophobic surface have weak hydrogen-bonding interactions. For GNB–diamond, it is noteworthy that in addition to P1, a red-shifted broad band (P3) at $\sim 3,220\text{ cm}^{-1}$, which is characteristic of strong hydrogen bonding, is present at room temperature. P3 can be assigned to the condensation of water inside the bubbles. When the GNB–diamond sample is heated to increasingly higher temperature, another red-shifted P4 peak at $2,967\text{ cm}^{-1}$ emerges, which is indicative of increased clustering. At 673 K, the intensity of the $3,220\text{ cm}^{-1}$ peak is observed to weaken, and a blue shifted sharp peak P2 appears at $3,510\text{ cm}^{-1}$. At this point, the weakening of the hydrogen bonding can be interpreted as the emergence of supercritical phase in some of the bubbles^{30–32}. Previously, Tassaing *et al.*³¹ observed a broadening of vibrational bands, leading to a broad band with two maxima at about $3,650$ and $3,550\text{ cm}^{-1}$ and a shoulder at $3,250\text{ cm}^{-1}$ as water approaches critical conditions. The critical temperature of water is 647 K, and the properties of water $>674\text{ K}$ and at pressures higher than 2.21 MPa (critical pressure) differ significantly from those of ambient water. Supercritical water has a density between that of water vapour and liquid at standard conditions, reduced intermolecular bonding and exhibits high gas-like diffusion rates along with high liquid-like collision rates. A significantly reduced dielectric constant³³ (~ 20) allows it to act as an aggressive solvent for organic material. From the infrared spectra, it can be inferred that the trapped water molecules are rather inhomogeneous in its bonding environment; some water molecules trapped in the bubble undergoes clustering as pressure (temperature) increases, as reflected from increasingly stronger hydrogen-bonding environment (P4 and P5), whereas other water molecules, possibly trapped under flat part of the graphene sheet, do not cluster, as judged from the persistence of peak P1. It must be pointed out that peaks P2, P4 and P5 are dynamic features that are observed only at high temperatures; they decrease in intensities once the sample is cooled to room temperature (Fig. 3d (vii)).

GNBs as high-pressure reactors for etching of diamond. After heating the GNB–diamond sample over 1 h at 1,375 K, numerous nanometer-sized square voids appear on the diamond surface with a density of $9 \times 10^9\text{ cm}^{-2}$. Figure 4e shows the scanning electron microscope image of these nanovoids, which have an average width of $\sim 40\text{ nm}$. The square etched pits follow the crystallographic expectation of the 100-faceted diamond. The occurrence of etched pits is intriguing as vigorous chemical or physical treatments, in the presence of transition metal catalysts, are usually needed to etch diamond. Control studies where the diamond crystal was heated alone in air or in vacuum at the same temperature failed to reproduce the etched pits that were observed when the diamond crystal was encapsulated by graphene membrane. At elevated temperatures, GNBs can be transformed into a hydrothermal reactor because of its impermeability^{21,34}. Trapped water molecules inside can be transformed into supercritical fluid, which is highly corrosive to organic medium. For example, supercritical water has been used in the oxidation of methane to produce CO and CO₂ at 25 MPa and temperature $>773\text{ K}$ ³⁵.

The pressure inside a GNB can be estimated from its deformation from a flat membrane using Hencky's solution for the geometrically nonlinear response of an isotropic elastic membrane subjected to a pressure difference Δp across the membrane. This solution provides the membrane profile in the form of an infinite series in radial position, and also the relationship between the pressure difference and bubble height,

$\Delta p = K(\nu) (E t h^3)/r^4$. Here E is the Young's modulus, ν is Poisson ratio, t is the membrane thickness, r is the radius of the bubble and $K(\nu)$ is the coefficient that is dependent on the Poisson ratio. For graphene, we take $\nu = 0.16$, and so $K(\nu = 0.16) = 3.09$ (ref. 36). The mean h and r values derived from AFM imaging are employed for estimation of pressure difference across a typical GNB. The pressure that is built up in a typical GNB of 2 nm in height and 10 nm in radius is calculated to be approximately 1 GPa. Alternatively, by considering a monolayer of water adsorbed on the surface of diamond and trapped within the GNB, the pressure estimated in the bubble using ideal gas law also arrived at a value of *ca.* 1 GPa. This value obtained lies within the pressure–temperature regime where etching of diamond is possible³⁷. The etching of diamond octahedrons at 1,375 K and 10^9 Pa has been previously reported with water and oxygen acting as etchants^{37,38}. Inside the bubbles, the superheated water is known to have enhanced solubility for non-polar organic materials.

It is interesting to reflect on the chemical robustness of the GNB relative to the diamond that is encapsulating. Figure 4a shows the p_z orbital isosurface wavefunction (isoval = 0.02 A.U.) of flat and curved graphene calculated using density functional theory (at B3LYP/6-31G*). In contrast to the evenly distributed electronic density of a flat graphene plane, the curvature in GNB produces an asymmetric distribution of π electrons on its outer and inner surface. Outward rotation of orbitals enhances local density of states and bestows higher reactivity on the outer surface of the GNB. In contrast, orbitals at the inner surface of the GNB (Fig. 4a) are rotated inwards to result in a diminished electron cloud, thus resulting in reduced reactivity of concaved graphene surface³⁹.

With increasing temperature, the GNB bursts finally, and remnants of the torn graphene sheets can be observed using AFM imaging (Fig. 4d). Raman spectroscopy of the surface at this point reveals poly-acetylene-like fragments on the pit-covered diamond (Supplementary Fig. S3).

To obtain an atomistic insight into the formation mechanism of GNBs on diamond, we carried out classical MD simulations using reactive empirical bond-order potential^{40,41} and reactive force field⁴². Diamond (100) slab with an atom density of $1.56 \times 10^{15}\text{ cm}^{-2}$ atoms and a size of $35 \times 35 \times 0.45\text{ nm}^2$ was built by six layers of atoms, each containing 20 000 atoms. Graphene (C(0001) sheet with a surface atom density of $3.65 \times 10^{15}\text{ atoms cm}^{-2}$ and containing 48 720 atoms was placed $Z = 2.5\text{ \AA}$ away from the surface of diamond to ensure that graphene and diamond are not covalently bonded at first.

We first test the possibility of bonding interactions between graphene and a bare diamond surface. The bare diamond surface is a reconstructed $(100) - (2 \times 1)$ surface truncated by dimer row formation. No interfacial bonding between diamond and graphene is observed when the system is heated to 700 K, and only a minor rippling of graphene is observed (see Fig. 4b at 700 K). The reason of the rippling is the lattice mismatch between diamond (100) and graphene. The amplitude of rippling increases with the heating temperature; however, even at 2000 K, the height of the ripples does not exceed 5 \AA (Fig. 4b at 2,000 K).

A different situation exists when a dihydride-terminated (denoted as 2H: C(100) – (2×1)) diamond surface interacts with graphene (Fig. 4c). Upon desorption of hydrogen atoms at 1,100 K, our MD simulation shows clearly that graphene–diamond bonding occurs instantaneously (Fig. 4c). The graphene–diamond bonding produces ripples on graphene sheet. At $\geq 1,500\text{ K}$, part of graphene sheet erupts into bubbles (Fig. 4c at 1,500 K) due to pressure created by desorbing hydrogen molecules. At even higher temperature, breakage of interfacial C–C bonds between graphene and diamond resulted in the delamination of GNB from diamond surface.

Discussion

These simulations confirm that the formation of GNB on the diamond surface is initiated by the interfacial bonding between diamond and graphene. Interfacial bonding seals the edges and prevents the graphene sheet from delaminating from diamond, thus desorbed gaseous species are trapped effectively within the bubbles. Gasification of surface-adsorbed species like hydrogen and water create pressure inside the bubble because of impermeability of graphene membrane. It can be appreciated that the size of the bubble will scale with the amount of trapped water molecules, which is confirmed by our experiments on oxygenated diamond surfaces, which are hydrophilic and trapped a greater volume of water (Supplementary Fig. S4, Supplementary Table S1 and Supplementary Note 1). The ability of graphene to undergo out-of-plane bonding with diamond is essential for sealing the edges of the bubble, otherwise on non-bonding substrate, a decohesion of the graphene membrane occurs and no bubble formation occurs (refer to Supplementary Fig. S4).

The technological implication of the present work extends to supercritical fluid-assisted etching of solid surfaces, as well as fabricating new types of high-pressure anvil cell using graphene membrane. Because of the transparency and high thermal conductivity of graphene, it can serve as an optical window for laser-assisted etching where exponential increase in etch rates can be brought about by the synergistic effects of photoexcitation and ultrahigh pressure. Finally, the encapsulation of fluids between graphene bubbles and diamond allow supercritical fluids to be probed spectroscopically using a wide range of radiation ranging from X-ray, infrared light to gamma rays.

In conclusion, the graphene–diamond interface undergoes bonding at high temperature to transform the graphene layer on top of the diamond into an undulating sheet of nanobubbles. There are several important outcomes. First, the GNBs-coated diamond surface shows enhanced electrochemical activity compared with the surface encapsulated by a flat graphene sheet, due to the highly strained structure of the former. Second, the GNBs can trap fluid within and act as hydrothermal anvil cells when the diamond–graphene interface is heated to high temperatures. Interestingly, we discover that superheated water trapped inside the nanobubbles is highly corrosive and etches diamond. This work shows the first example of using an impermeable atomic membrane for trapping fluid at supercritical conditions, where the hydrogen-bonding dynamics of water molecules at high temperature and pressure can be studied using *in situ* FTIR. Thus, the graphene–diamond hydrothermal anvil can serve as a useful bench-top construct for investigating the dynamic chemistry of supercritical phases in fluids.

Methods

CVD growth and transfer of graphene. The graphene sheets used in this study were grown by CVD following previous reported procedures⁴³. The process was carried out in a quartz tube at reduced pressure with copper as a catalyst for G growth. The copper foil (thickness of 25 μm , purity of 99.8%) was heated at 1,275 K under a 10-sccm flow of H_2 (~ 400 mTorr) to reduce the oxide present, increase the grain size and ensure a smooth surface for growth. Next, CH_4 was introduced into the chamber for growth. CH_4 (10 sccm) and H_2 (10 sccm) was maintained at ~ 750 mTorr for 30 min. Following that, the grown sheet was cooled in an atmosphere of H_2 to room temperature. The graphene on copper foil samples were coated with poly (methyl methacrylate) (PMMA) and transferred onto desired substrates.

Surface preparation of single-crystal diamond, quartz and sapphire. Type IIa CVD single-crystal diamonds (100) were purchased from Element Six and mechanically polished to give rms $< \sim 0.2$ nm before use. Acid cleaning and hydrogen-plasma cleaning of diamond were used for all diamond samples. Metallic impurities were first dissolved in hot aqua regia ($\text{HNO}_3\text{:HCl}$ 1:3), followed by removing organic impurities from the diamond samples by hot ‘piranha’ solution ($\text{H}_2\text{O}_2\text{:H}_2\text{SO}_4$ 1:3) at 375 K for 1 h. H termination of diamond samples was

performed by microwave hydrogen-plasma treatment using 800 W microwave power and 300 sccm of hydrogen gas flow for 15 min. Quartz (Photonics) and sapphire (MTI corporation) substrates of < 0.1 nm were sequentially rinsed and sonicated in acetone, isopropyl alcohol and Nanopure water, and then dried under N_2 stream before they were used.

Annealing for formation of GNB. The samples were mounted on a Mo sample plate, transferred into an ultrahigh vacuum chamber with a base pressure of $< 10^{-10}$ Torr. Annealing was conducted at 1,275 K for 45 min by e-beam heating (SPECS GmbH, Germany). Throughout the entire annealing process, it was ensured that the pressure did not rise beyond 10^{-8} Torr.

Atomic force microscopy. A Dimension ICON using Nanoscope V controller (Bruker, Santa Barbara, CA) equipped with a diamond probe (DNISP; Bruker AFM Probes, Camarillo, CA) was operated in Peakforce Quantitative Nanomechanical mode for simultaneous topography imaging and Young’s modulus mapping of the graphene bubbles. In Peakforce Quantitative Nanomechanical mode, the tip is oscillated at a fixed frequency of about 2 kHz and continuously indents into the sample at a small depth of about 1–2 nm while scanning over the surface. From each indentation force curve, different physical properties such as Young’s modulus can be measured simultaneously with topography at each pixel with the same spatial and temporal resolutions (Supplementary Fig. S5).

Ultraviolet photoelectron emission spectroscopy. The electronic structures of graphene–diamond were monitored using ultraviolet photoelectron spectroscopy. Measurements were carried out in an ultrahigh vacuum chamber (base pressure of 1×10^{-10} Torr). The spectra were calibrated and referenced to the Fermi level gold. No charging effect was observed for all samples. During the mapping of valence band, a -5 V bias is applied to the sample to overcome the workfunction of the analyser (~ 4.4 eV).

Raman spectroscopy. Raman spectra were obtained with NEOS-SENTERRA (Bruker) AFM-Raman spectrometer at room temperature, with an excitation laser source of 532 nm. The laser power was always kept < 0.1 mW to prevent heating of the sample.

FTIR to probe the interaction of water molecules. FTIR of graphene and diamond samples were performed in the reflection mode by using an OPUS/IR PS15 spectrometer (Bruker). The sample was loaded into a high-temperature high-pressure FTIR cell evacuated to 1×10^{-4} Torr. The spectra were the results of 32 coadded interferograms at 4 cm^{-1} resolution between 400 and $6,000\text{ cm}^{-1}$ with collection times of approximately 2 min. Each sample was analysed at least three times and results obtained were reproducible.

MD simulations. MD simulations were carried out with the reactive empirical bond-order potential potential^{40,41} for the models containing only carbon and hydrogen atoms and with reactive force field⁴² for the models containing oxygen atoms, respectively. Both methods were implemented with LAMMPS (large-scale atomic/molecular massively parallel simulation package⁴⁴). Periodic boundary conditions were applied in all three directions, and the MD step was 0.5 fs. Structures obtained by this procedure were visualized with the VMD package⁴⁵.

References

- Bao, W. *et al.* Controlled ripple texturing of suspended graphene and ultrathin graphite membranes. *Nat. Nanotechnol.* **4**, 562–566 (2009).
- Bolotin, K. I., Sikes, K. J., Hone, J., Stormer, H. L. & Kim, P. Temperature-dependent transport in suspended graphene. *Phys. Rev. Lett.* **101**, 096802 (2008).
- Meyer, J. C. *et al.* The structure of suspended graphene sheets. *Nature* **446**, 60–63 (2007).
- Berger, C. *et al.* Electronic confinement and coherence in patterned epitaxial graphene. *Science* **312**, 1191–1196 (2006).
- Xue, J. *et al.* Scanning tunnelling microscopy and spectroscopy of ultra-flat graphene on hexagonal boron nitride. *Nat. Mater.* **10**, 282–285 (2011).
- Dean, C. R. *et al.* Boron nitride substrates for high-quality graphene electronics. *Nat. Nanotechnol.* **5**, 722–726 (2010).
- Pan, W. *et al.* Biaxial compressive strain engineering in graphene/boron nitride heterostructures. *Sci. Rep.* **2**, 893 (2012).
- Marchini, S., Günther, S. & Wintterlin, J. Scanning tunneling microscopy of graphene on Ru(0001). *Phys. Rev. B: Condens. Matter Mater. Phys.* **76**, 075429 (2007).
- Vázquez De Parga, A. L. *et al.* Periodically rippled graphene: growth and spatially resolved electronic structure. *Phys. Rev. Lett.* **100**, 056807 (2008).
- Lu, J., Neto, A. H. C. & Loh, K. P. Transforming moiré blisters into geometric graphene nano-bubbles. *Nat. Commun.* **3**, 823 (2012).

11. Stolyarova, E. *et al.* Observation of graphene bubbles and effective mass transport under graphene films. *Nano Lett.* **9**, 332–337 (2009).
12. Zabel, J. *et al.* Raman spectroscopy of graphene and bilayer under biaxial strain: bubbles and balloons. *Nano Lett.* **12**, 617–621 (2012).
13. Bundy, F. P. Direct conversion of graphite to diamond in static pressure apparatus. *Science* **137**, 1057–1058 (1962).
14. Irfune, T., Kurio, A., Sakamoto, S., Inoue, T. & Sumiya, H. Materials: ultrahard polycrystalline diamond from graphite. *Nature* **421**, 599–600 (2003).
15. Khaliullin, R. Z., Eshet, H., Kühne, T. D., Behler, J. & Parrinello, M. Nucleation mechanism for the direct graphite-to-diamond phase transition. *Nat. Mater.* **10**, 693–697 (2011).
16. Ohfujii, H. & Kuroki, K. Origin of unique microstructures in nano-polycrystalline diamond synthesized by direct conversion of graphite at static high pressure. *J. Miner. Petrol. Sci.* **104**, 307–312 (2009).
17. Ferrari, A. C. & Robertson, J. Resonant raman spectroscopy of disordered, amorphous, and diamondlike carbon. *Phys. Rev. B: Condens. Matter Mater. Phys.* **64**, 75414 (2001).
18. Ni, Z. H. *et al.* Tunable stress and controlled thickness modification in graphene by annealing. *ACS Nano* **2**, 1033–1039 (2008).
19. Bissett, M. A., Izumida, W., Saito, R. & Ago, H. Effect of domain boundaries on the Raman spectra of mechanically strained graphene. *ACS Nano* **6**, 10229–10238 (2012).
20. Mohiuddin, T. M. G. *et al.* Uniaxial strain in graphene by Raman spectroscopy: G peak splitting, Grüneisen parameters, and sample orientation. *Phys. Rev. B: Condens. Matter Mater. Phys.* **79**, 205433 (2009).
21. Ferrari, A. C. & Robertson, J. Origin of the 1150 cm⁻¹ raman mode in nanocrystalline diamond. *Phys. Rev. B: Condens. Matter Mater. Phys.* **63**, 1214051 (2001).
22. Lim, C. X., Hoh, H. Y., Ang, P. K. & Loh, K. P. Direct voltammetric detection of DNA and pH sensing on epitaxial graphene: an insight into the role of oxygenated defects. *Anal. Chem.* **82**, 7387–7393 (2010).
23. Yuan, Q. *et al.* Upright standing graphene formation on substrates. *J. Am. Chem. Soc.* **133**, 16072–16079 (2011).
24. Bunch, J. S. *et al.* Impermeable atomic membranes from graphene sheets. *Nano Lett.* **8**, 2458–2462 (2008).
25. Yuk, J. M. *et al.* High-resolution EM of colloidal nanocrystal growth using graphene liquid cells. *Science* **335**, 61–64 (2012).
26. Leenaerts, O., Partoens, B. & Peeters, F. M. Graphene: A perfect nanoballoon. *Appl. Phys. Lett.* **93**, 193107 (2008).
27. Lasagabaster, A., Abad, M. J., Barral, L. & Ares, A. FTIR study on the nature of water sorbed in polypropylene (PP)/ethylene alcohol vinyl (EVOH) films. *Eur. Polym. J.* **42**, 3121–3132 (2006).
28. Loparo, J. J., Roberts, S. T. & Tokmakoff, A. Multidimensional infrared spectroscopy of water. II. Hydrogen bond switching dynamics. *J. Chem. Phys.* **125**, 194522 (2006).
29. Charles, S. J. *et al.* Characterization of nitrogen doped chemical vapor deposited single crystal diamond before and after high pressure, high temperature annealing. *Phys. Status Solidi A* **201**, 2473–2485 (2004).
30. Jin, Y. & Ikawa, S. I. Near-infrared spectroscopic study of water at high temperatures and pressures. *J. Chem. Phys.* **119**, 12432–12438 (2003).
31. Tassaing, T., Garrain, P. A., Bgú, D. & Baraille, I. On the cluster composition of supercritical water combining molecular modeling and vibrational spectroscopic data. *J. Chem. Phys.* **133**, 034103 (2010).
32. Marcus, Y. Supercritical water: Relationships of certain measured properties to the extent of hydrogen bonding obtained from a semi-empirical model. *Phys. Chem. Chem. Phys.* **2**, 1465–1472 (2000).
33. Yoshii, N., Miura, S. & Okazaki, S. A molecular dynamics study of dielectric constant of water from ambient to sub- and supercritical conditions using a fluctuating-charge potential model. *Chem. Phys. Lett.* **345**, 195–200 (2001).
34. Xu, K., Cao, P. & Heath, J. R. Graphene visualizes the first water adlayers on mica at ambient conditions. *Science* **329**, 1188–1191 (2010).
35. Webley, P. A. & Tester, J. W. Fundamental kinetics of methane oxidation in supercritical water. *Energy Fuels* **5**, 411–419 (1991).
36. Koenig, S. P., Boddeti, N. G., Dunn, M. L. & Bunch, J. S. Ultrastrong adhesion of graphene membranes. *Nat. Nanotechnol.* **6**, 543–546 (2011).
37. Yamaoka, S., Kanda, H. & Setaka, N. Etching of diamond octahedrons at high temperatures and pressure with controlled oxygen partial pressure. *J. Mater. Sci.* **15**, 332–336 (1980).
38. Kanda, H., Yamaoka, S., Setaka, N. & Komatsu, H. Etching of diamond octahedrons by high pressure water. *J. Cryst. Growth* **38**, 1–7 (1977).
39. Cortijo, A. & Vozmediano, M. A. H. Electronic properties of curved graphene sheets. *Europhys. Lett.* **77**, 47002 (2007).
40. Brenner, D. W. Empirical potential for hydrocarbons for use in simulating the chemical vapor deposition of diamond films. *Phys. Rev. B* **42**, 9458–9471 (1990).
41. Brenner, D. W. Erratum: empirical potential for hydrocarbons for use in simulating the chemical vapor deposition of diamond films. *Phys. Rev. B* **46**, 1948–1948 (1992).
42. Van Duin, A. C. T., Dasgupta, S., Lorant, F. & Goddard Iii, W. A. ReaxFF: a reactive force field for hydrocarbons. *J. Phys. Chem. A* **105**, 9396–9409 (2001).
43. Li, X. *et al.* Large-area synthesis of high-quality and uniform graphene films on copper foils. *Science* **324**, 1312–1314 (2009).
44. Plimpton, S. Fast parallel algorithms for short-range molecular dynamics. *J. Comput. Phys.* **117**, 1–19 (1995).
45. Humphrey, W., Dalke, A. & Schulten, K. VMD: visual molecular dynamics. *J. Mol. Graphics* **14**, 33–38 (1996).

Acknowledgements

We thank Professor Antonio H. Castro Neto (National University of Singapore) for discussion and Professor Özyilmaz Barbaros's group for assistance with mechanically exfoliated graphene. K.P.L. would like to thank for the financial support by MOE Tier 2 Fund R-143-000-493-112 'From in-situ observation to the growth scaling of graphene quantum dots'. Q.B. acknowledges financial support from the Lee Kuan Yew post-doctoral fellowship.

Author contributions

K.P.L. and C.H.Y.X.L. conceived the idea. K.P.L. supervised the project. C.H.Y.X.L. designed, planned and performed the experiments. A.S. performed molecular dynamics simulation. Q.B. helped in Raman measurements and figure presentation. A.L. assisted in mechanical indentation and Raman measurements. K.Z. provided CVD graphene samples. M.N. aided in the growth and polishing of diamond crystals. C.H.Y.X.L. and K.P.L. analysed the data and wrote the manuscript. All authors discussed and commented on the manuscript.

Additional information

Supplementary Information accompanies this paper at <http://www.nature.com/naturecommunications>

Competing financial interests: The authors declare no competing financial interests.

Reprints and permission information is available online at <http://npg.nature.com/reprintsandpermissions/>

How to cite this article: Lim, CHYX *et al.* A hydrothermal anvil made of graphene nanobubbles on diamond. *Nat. Commun.* **4**:1556 doi: 10.1038/ncomms2579 (2013).