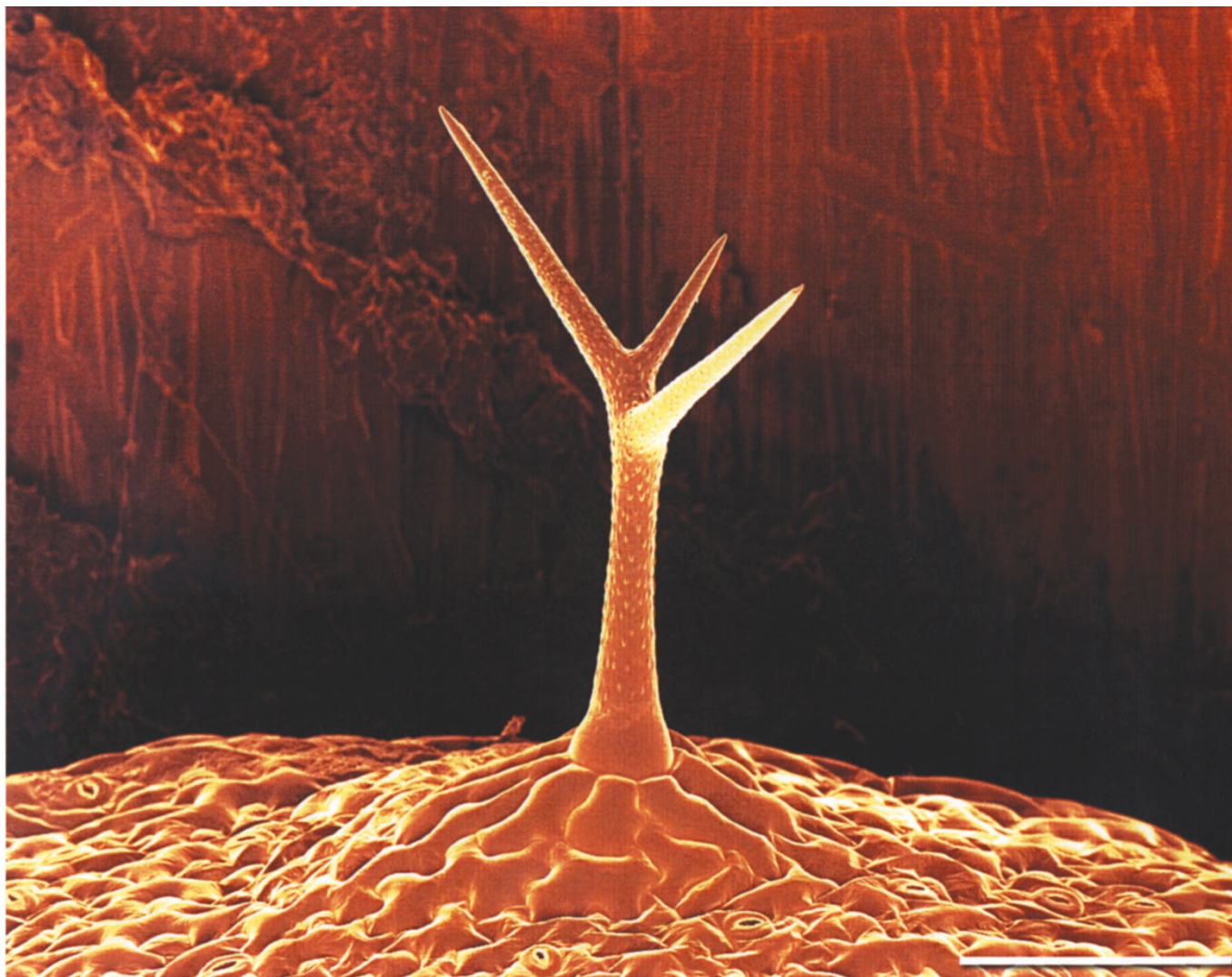


## A trichome on an *Arabidopsis thaliana* leaf

Jaap Nijse, Wageningen University, Wageningen, The Netherlands, jaap.nijse@wur.nl



The image shows a plant hair cell (trichome) on a leaf of *Arabidopsis thaliana*. The image was obtained using cryo-fixation techniques and a field-emission scanning electron microscope (JEOL 6300F). Bar, 100  $\mu\text{m}$ .

The winner would like to acknowledge the help of T. Ritsema (University of Basel, Switzerland).