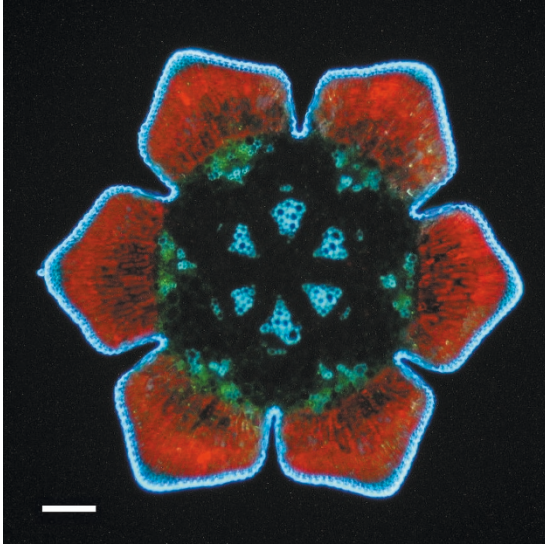


cell of the month

Allocauarina verticillata shoots expressing GFP.

Sergio Svistonoff, Sergio_Svistonoff@mpl.ird.fr



legend Green fluorescent protein (GFP) under the control of the 35S promoter is expressed in the phloem cells. The chloroplasts of the mesophyll cells appear in red, whereas the lignified cells of the epidermis and xylem vessels appear in light blue. Transverse shoot sections were viewed under blue-UV light using a Leica-DMR microscope with an epifluorescence filter A. Scale bar, 100 μ m.

advisors Ariel Ruiz i Altaba (Developmental Genetics Program, New York University Medical Center, NY) & Lelio Orci (Department of Morphology, University Medical Center, Geneva, Switzerland).