

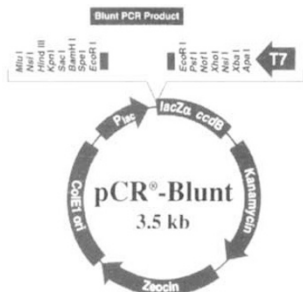
VECTORS AND EXPRESSION SYSTEMS



**Mini plasmid prep kit**

The UltraClean Mini Plasmid Prep Kit from Mo Bio Laboratories (Solana Beach, CA) is based on alkaline lysis with a specially developed neutralizer that compacts the SDS precipitate into a tight pellet that does not need to be filtered. The plasmid DNA is then bound directly to a unique silica membrane spin-filter, washed once, then pure plasmid DNA is recovered in water or Tris. No messy silica matrix is used, and all reagents are ready to use. UltraClean DNA can be used for automated sequencing, transfections, restriction digests, labeling, PCR, and ligations.

Tel: +1 619 944 7190  
 Fax: +1 619 944 7134  
 RSN 979



**Cloning vector**

Invitrogen's (Leek, The Netherlands) new Zero Blunt PCR cloning kit clones blunt-ended PCR products generated from thermostable polymerases such as Vent or Pfu in one hour without post-PCR cleanup or enzymatic modifications. Zero Blunt uses positive selection, so that 95% of colonies will be true recombinants. The Zero Blunt PCR cloning kit includes linearized pCR-Blunt vector, reagents, competent cells, and controls.

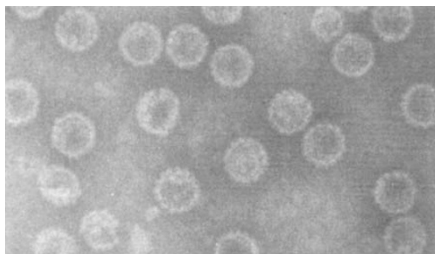
Tel: +31 594 515 175  
 Fax: +31 594 515 312  
 RSN 980

**Reporter assay system**

The Dual-Luciferase Reporter Assay System from Promega (Madison, WI) combines the benefits of the firefly luciferase assay with an assay for sea pansy (*Renilla reniformis*)

luciferase, to provide a single-tube, dual-reporter assay for internal normalization of gene expression measurements. Both assays can be completed in about 30 seconds. The system contains sufficient cell lysis and assay reagents to perform 100 Dual-Luciferase assays, which can be performed in standard luminometers without need of reagent injectors. The included Passive Lysis Buffer is ideally suited for generating complete lysates of cells cultured in 96-well plates.

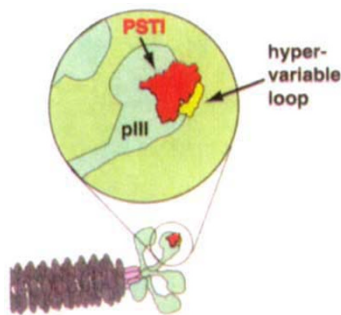
Tel: +1 608 274 4330  
 Fax: +1 608 277 2601  
 RSN 981



**Cell transfection vector**

The Pseudofect mammalian transfection system from Biovation (Aberdeen, UK) avoids the introduction of unwanted viral DNA by using polyoma pseudocapsid particles to transfer and integrate exogenous DNA into a wide range of mammalian cell types in vitro. DNA is added to the self-assembling particles at an optimal ratio in the presence of polylysine. The Pseudofect transfection kit contains pseudocapsid particles, polylysine, and a control plasmid.

Tel: +44 1224 273 406  
 Fax: +44 1224 273 408  
 RSN 982



**pSKAN Phagemid**

Display Systems Biotech (Los Angeles, CA) introduces the new pSKAN Phagemid display system as an alternative to antibodies or immunoglobulin domain-presenting phagemids. Animals or tissue cultures for the production of antibodies become needless. Since the pSKAN phagemid displays a small and

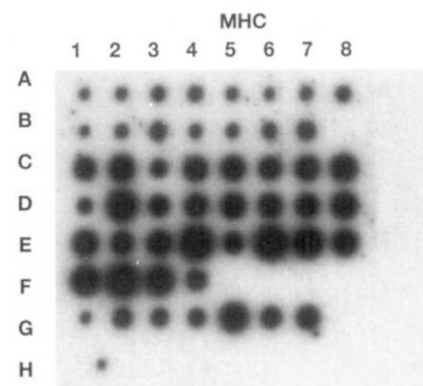
constrained hypervariable amino acid loop, more than 3 x 10<sup>7</sup> variants can be tested for specific binding to a target molecule of interest. The sequence of the binding domain can easily be determined by DNA sequencing. Three different pSKAN phagemid libraries within *Escherichia coli* are conveniently supplied, along with a detailed handbook including all protocols.

Tel: +1 800 697 1111  
 Fax: +1 213 656 0894  
 RSN 983

**Expression vector**

The pBBR122 expression vector from MoBiTec (Göttingen, Germany) replicates stably in a broad range of Gram-negative organisms, allowing expression of genes in bacteria other than *Escherichia coli*. pBBR122 replicates at high copy numbers, has a small size (5304 bp), and is compatible with other broad host range vectors, as it does not belong to any of the incompatibility groups IncP, IncQ, or IncW.

Tel: +49 551 37 10 62  
 Fax: +49 551 34 98 7  
 RSN 984



**RNA dot blot**

CLONTECH Laboratories (Palo Alto, CA) offers Master Blot, the only premade poly A+ RNA dot blot on the market. The blot contains RNA from 50 hard-to-obtain human adult and fetal tissues, allowing researchers to generate a tissue-specific expression profile in one fast, simple hybridization experiment. Master Blot is carefully normalized to the mRNA expression levels of 8 housekeeping genes for accurate assessment of target gene expression. Master Blot uses the same high-quality poly A+ RNAs used for CLONTECH's popular MTN (Multiple Tissue Northern) blots.

Tel: +1 800 662 CLON  
 Fax: +1 800 424 1350  
 RSN 985