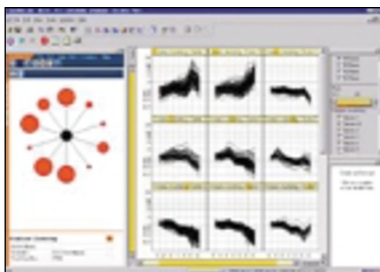


## NEW PRODUCTS

## Software

**Decision analytics**

Spotfire Array Explorer 3.0 is the latest version of Spotfire's (Cambridge, MA) gene expression analysis software. It is fully integrated with the Spotfire.net Web-based decision analytics platform, and provides researchers with four types of capabilities that are key to effective gene expression analysis: links to internal genomics data sources and those of key content and instrumentation providers, powerful software for gene expression analysis, a Web environment, and the ability to collaborate with colleagues in the discovery process.

<http://www.spotfire.com>

RIN: 14

**Image analysis**

ImaGene Version 4.0, from BioDiscovery (Los Angeles, CA), has been completely redesigned to offer unprecedented flexibility and standardization in the analysis of DNA microarray images. ImaGene can operate with any array image—whether slides or membranes—from any manufacturer, scanned by any scanner. Accuracy in quantitation is assured by an interactive image segmentation tool, and for ease of use, predefined templates for many of the popular commercial arrays are integrated.

<http://www.biodiscovery.com>

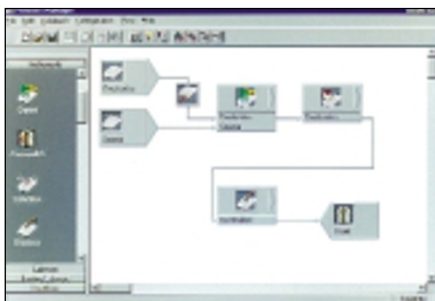
RIN: 16

**Culture flasks**

Iwaki tissue culture flasks, available from Bibby Sterilin (Stone, UK), promote excellent cell growth. A special surface treatment ensures optimum attachment of anchorage-dependent cells, whereas nontreated flasks are available for suspension culture. Flasks range in volume capacity from 60–900 ml, providing surface areas of 25–225 cm<sup>2</sup>.

<http://www.bibby-sterilin.com>

RIN: 19

**Cell & tissue culture****Flexible thinking**

Researchers will find Tecan's (Hombrechtikon, Switzerland) Flexible Assay Composer and Task Scheduler (FACTS) software, version 4.7, invaluable for screening, compound discovery and logistics, assay development, and genomics applications. It combines the flexibility of its predecessor with a new interface. New features include a process manager with an Outlook-style toolbar for easy set-up and system configuration, and the prescheduler allows users to simulate processes and to optimize system performance before committing precious samples to a real run.

<http://www.tecan.com>

RIN: 15

**Antibody production**

High-yield antibody concentrations, comparable to the ascites method, are achieved when BD Cell Mab medium is used in combination with the CELLLine flask, both from BD (Sparks, MD). After a 14 day incubation, antibody yields average between 30 and 150 mg, with no manipulation of the culture. In other cultures, BD Cell Mab medium also reduces media consumption by up to 80%, for significant labor and cost savings.

<http://www.bd.com>

RIN:18

**Bioreactor**

With the introduction of the Wave Biotech (Bedminster, NJ) Bioreactor System 200, users can handle culture volumes from 10 to 100 liters in a proven cell culture design. Features include a disposable pre-sterile culture bag, temperature control for stand-alone operation, and microprocessor control of rocking speed and angle. The Wave Bioreactor is ideal for a wide range of cell culture applications, including animal, insect, plant, and virus cultures, in suspension and on carriers.

<http://www.wavebiotech.com>

RIN: 17