

CORRIGENDUM

doi:10.1038/nature16181

Corrigendum: Identification of the pollen self-incompatibility determinant in *Papaver rhoeas*

Michael J. Wheeler, Barend H. J. de Graaf, Natalie Hadjiosif, Ruth M. Perry, Natalie S. Poulter, Kim Osman, Sabina Vatovec, Andrea Harper, F. Christopher, H. Franklin & Veronica E. Franklin-Tong

Nature **459**, 992–995 (2009); doi:10.1038/nature08027

Recently, it has come to our attention that in the left panel of Fig. 2b of this Letter, the lanes labelled S₂S₄ and S₆S₁₇ were duplicated. We have reviewed the original data. It seems likely that a duplicated part of the blot was placed over lane S₆S₁₇ to aid alignment of molecular mass markers and inadvertently left there. We have now removed the duplicated lane and show the whole western blot (Fig. 1). Our conclusions are unaffected.

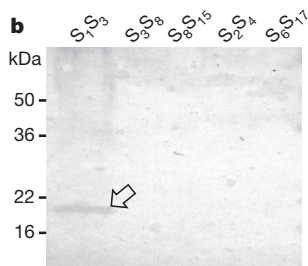


Figure 1 | This is the corrected left panel of Fig. 2b. The right panel showing the Coomassie staining is not shown.