

## CORRIGENDUM

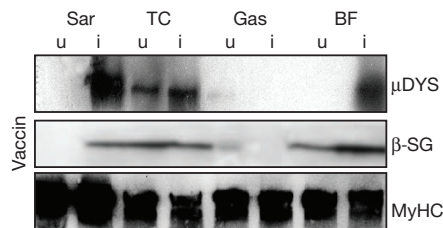
doi:10.1038/nature11976

### Corrigendum: Mesoangioblast stem cells ameliorate muscle function in dystrophic dogs

Maurilio Sampaolesi, Stephane Blot, Giuseppe D'Antona, Nicolas Granger, Rossana Tonlorenzi, Anna Innocenzi, Paolo Mognol, Jean-Lauren Thibaud, Beatriz G. Galvez, Ines Barthélémy, Laura Perani, Sara Mantero, Maria Guttinger, Orietta Pansarasa, Chiara Rinaldi, M. Gabriella Cusella De Angelis, Yvan Torrente, Claudio Bordignon, Roberto Bottinelli & Giulio Cossu

*Nature* **444**, 574–579 (2006), doi:10.1038/nature05282

In Fig. 4b of this Article, the gel for the loading control MyHC for the dog Vaccin was an unintentional duplication of the loading control for the dog Vampire (which is correct). The correct gel is shown below in Fig. 1. The error does not affect any of our results. Figure 4 has been corrected in the original Article's HTML and PDF online.



**Figure 1** | This is the corrected lower-right panel of Fig. 4b of the original Article.

## CORRIGENDUM

doi:10.1038/nature13143

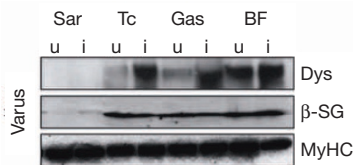
### Corrigendum: Mesoangioblast stem cells ameliorate muscle function in dystrophic dogs

Maurilio Sampaolesi, Stephane Blot, Giuseppe D'Antona, Nicolas Granger, Rossana Tonlorenzi, Anna Innocenzi, Paolo Mognol, Jean-Lauren Thibaud, Beatriz G. Galvez, Ines Barthélémy, Laura Perani, Sara Mantero, Maria Guttinger, Orietta Pansarasa, Chiara Rinaldi, M. Gabriella Cusella De Angelis, Yvan Torrente, Claudio Bordignon, Roberto Bottinelli & Giulio Cossu

*Nature* **444**, 574–579 (2006), doi:10.1038/nature05282 and corrigendum *Nature* **494**, 506 (2013); doi:10.1038/nature11976

In Fig. 4b of this Article, the gel for the loading control MyHC for the dog Varus was an unintentional duplication of the loading controls for the dog Vampire (which is correct). The correct gel is shown below in Fig. 1. The error does not affect any of our results and a University College London (UCL) committee appointed by the Vice Provost for Research has investigated the data presented in this Article and is satisfied of its authenticity.

Correspondence should be addressed to G.C. (giulio.cossu@manchester.ac.uk).



**Figure 1** | This is the corrected lower-left panel of Fig. 4b of the original Article.