

CORRIGENDUM

doi:10.1038/nature10410

Tumour vascularization via endothelial differentiation of glioblastoma stem-like cells

Lucia Ricci-Vitiani, Roberto Pallini, Mauro Biffoni, Matilde Todaro, Gloria Invernici, Tonia Cenci, Giulio Maira, Eugenio Agostino Parati, Giorgio Stassi, Luigi Maria Larocca & Ruggero De Maria

Nature **468**, 824–828 (2010)

The figures and Supplementary figures of this Letter are affected by errors and improper editing. The correct figures are now provided, with an explanation of the variations. The original Letter has not been corrected online. We apologise for the confusion that our errors could have produced. We admit our negligence in the supervision of technical activity. We acknowledge that image manipulation is not acceptable and that any image modification must be clearly described. None of the alterations have any direct impact on the validity of our conclusions, which were also substantially confirmed in papers published by other independent groups^{1,2}.

In Fig. 1b, the left panel was generated by joining different fields acquired from several pictures in which the density of nuclei was very low. This was not apparent in the original figure because no border limits the individual acquisitions. This does not affect the interpretation of the results, which was based on the direct observation of a large number of cell nuclei by a senior investigator that gave the frequency of euploid versus aneuploid cells in each case preparation. The figure is only intended to show the appearance of different patterns. The same

correction has been made in the right panel. Figure 1b, now showing the eight separate images, is corrected below. The master pictures of the figure are available as Supplementary Figs 1 and 2 of this Corrigendum. In Fig. 1c, two parts of the same picture were cut, flipped and moved closer to save space in the figure. However, the upper and lower panels of Fig. 1c partially overlapped. In Fig. 2b, the panel showing the uptake of LDL by HMVEC (bottom image only) erroneously showed a duplication of the GBM patient panel. The HMVEC panel of Fig. 2b is corrected below.

Further errors in the Supplementary Information of the original Letter are described and corrected in the Supplementary Information of this Corrigendum.

Supplementary Information is linked to the online version of the Corrigendum at www.nature.com/nature.

1. Wang, R. *et al.* Glioblastoma stem-like cells give rise to tumour endothelium. *Nature* **468**, 829–833 (2010).
2. Soda, Y. *et al.* Transdifferentiation of glioblastoma cells into vascular endothelial cells. *Proc. Natl Acad. Sci. USA* **108**, 4274–4280 (2011).

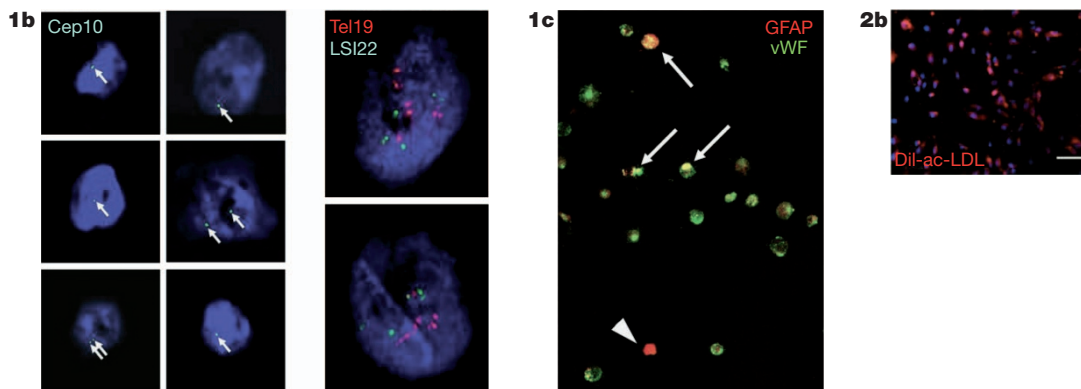


Figure 1 | Corrected left panel of original Fig. 1b, corrected original Fig. 1c, and corrected HMVEC panel in original Fig. 2b.