

Images of the month: July 2014

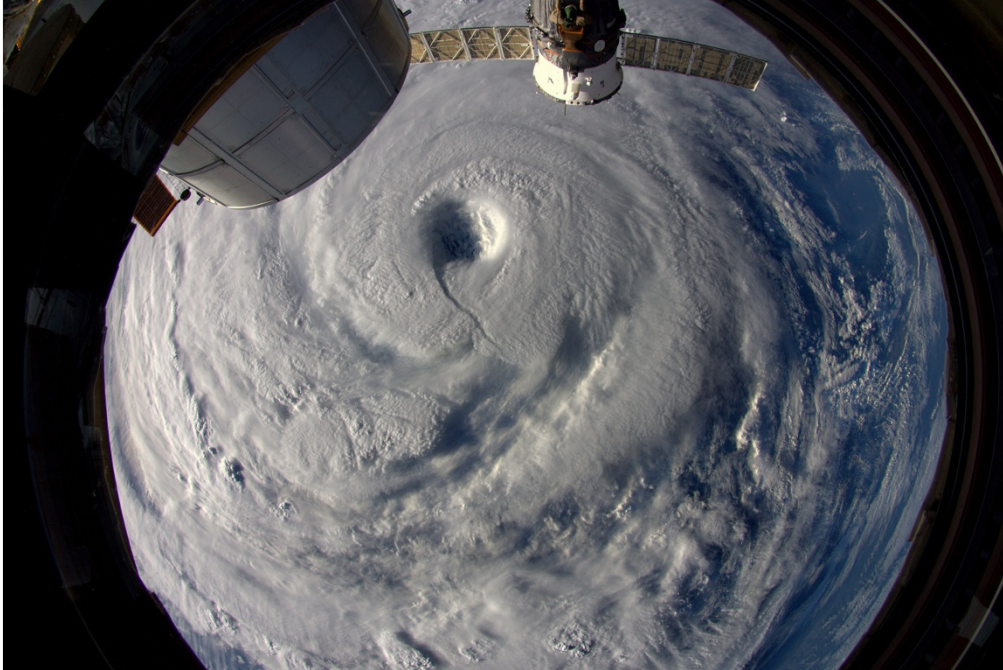
Pictures from the world of science, selected by *Nature's* art team.

Daniel Cressey

01 August 2014

Typhoons, a skeletal mammoth and iron claws all feature in this month's rather scary image collection. And to satisfy those gentler readers, we've also included some colourful flamingos, particle-physics art and a bonsai tree drifting on the edge of space. Please enjoy.

Supertyphoon from space



ESA/NASA

Sometime between 4 July and 7 July, tropical cyclone Neoguri turned into a supertyphoon over the western Pacific Ocean, with winds exceeding 240 kilometres an hour. This picture was taken from the International Space Station by German astronaut Alexander Gerst, who wrote: "Just went right above Supertyphoon Neoguri. It is ENORMOUS. Watch out, Japan!"

Taking stock of flamingos



Jorge Guerrero/AFP/Getty

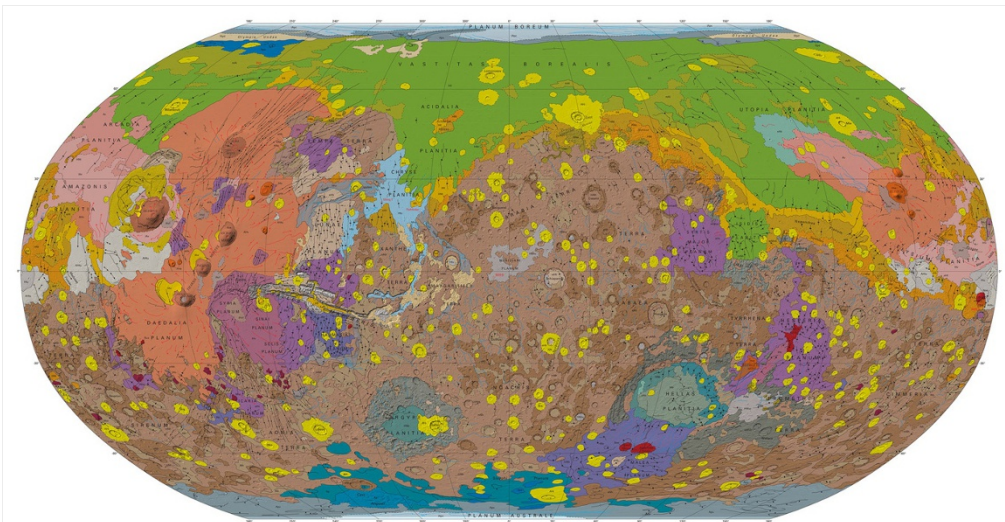
Flamingos flock to Fuente de Piedra lake in Spain to breed. This picture was taken on 19 July as researchers tagged chicks at the nature reserve.

Flower power

Michael Hoch

In *The GodParticleHuntingMachine_3.1 /Poppy#1* by Michael Hoch, a physicist at CERN, Europe's particle physics centre near Geneva, Switzerland, a picture of poppies is interlaced with one of the facility's Compact Muon Solenoid detector. The image was one of a number of Hoch's works on display at the International Conference on High Energy Physics in Valencia, Spain, this month.

Mapping Mars



USGS

A map of Mars, unveiled by cartographer Ken Tanaka of the US Geological Survey on 14 July. The image is "a culmination of more than a decade of probing the red planet's geology and history with orbiters and rovers", [reported Nature's Alexandra Witze](#).

Trees in space



Darwin's library



Siberian scan

Lyuba's skeleton

The baby mammoth Lyuba was probably just one or two months old when it perished in what is now Siberia more than 40,000 years ago. Now, Daniel Fisher, a palaeontologist at the University of Michigan in Ann Arbor, and his colleagues have used a computed-tomography scanner to produce this haunting animation of the mummified animal.

Claws for thought



Luis Alvares/PERU/Reuters/Corbis

These terrifying metal claws were unearthed from a pre-Incan tomb in northern Peru earlier this year. They are thought to have been created by Moche civilization around 1,500 years ago.

Creating divisions

Reconstructing an animal's development cell by cell

The rapid development of zebrafish embryos is captured in this video from researchers at the Janelia Research Campus in Ashburn, Virginia. Cells' colours indicate their origin as they migrate over a 13-hour period and divide. The two sides of the video show the two hemispheres of the embryo as it develops.

Credit: *Fernando Amat, Kristin Branson, Yinan Wan & Philipp Keller, Janelia Farm Research Campus, HHMI*

