

EMBARGOED UNTIL 2:00 PM US ET, THURSDAY, 12 SEPTEMBER 2013

Distinguishable Epidemics of Multidrug-Resistant *Salmonella* Typhimurium DT104 in Different Hosts

A. E. Mather,¹ S. W. J. Reid,²† D. J. Maskell,³ J. Parkhill,¹ M. C. Fookes,¹ S. R. Harris,¹ D. J. Brown,⁴ J. E. Coia,⁴ M. R. Mulvey,⁵ M. W. Gilmour,^{5*} L. Petrovska,⁶ E. de Pinna,⁷ M. Kuroda,⁸ M. Akiba,⁹ H. Izumiya,¹⁰ T. R. Connor,¹† M. A. Suchard,¹¹ P. Lemey,¹² D. J. Mellor,¹³ D. T. Haydon,¹³ N. R. Thomson¹‡

¹Wellcome Trust Sanger Institute, Wellcome Trust Genome Campus, Hinxton CB10 1SA, UK. ²Royal Veterinary College, North Mymms, Hatfield AL9 7TA, UK. ³Department of Veterinary Medicine, University of Cambridge, Cambridge CB3 0ES, UK. ⁴Scottish *Salmonella Shigella* and *Clostridium difficile* Reference Laboratory, Stobhill Hospital, Glasgow G21 3UW, UK. ⁵National Microbiology Laboratory, Public Health Agency of Canada, Winnipeg, R3E 3R2, Canada. ⁶Animal Health and Veterinary Laboratories Agency, Weybridge, KT15 3NB, UK. ⁷Gastrointestinal Bacteria Reference Unit, Public Health England, Colindale, London NW9 5EQ, UK. ⁸Pathogen Genomics Center, National Institute of Infectious Diseases, Tokyo 162-8640, Japan. ⁹Bacterial and Parasitic Disease Research Division, National Institute of Animal Health, Ibaraki 305-0856, Japan. ¹⁰Department of Bacteriology I, National Institute of Infectious Diseases, Tokyo 162-8640, Japan. ¹¹Departments of Biomathematics and Human Genetics, David Geffen School of Medicine at UCLA, and Department of Biostatistics, UCLA Fielding School of Public Health, University of California, Los Angeles, CA 90095, USA. ¹²Department of Microbiology and Immunology, Rega Institute, KU Leuven, 3000 Leuven, Belgium. ¹³Boyd Orr Centre for Population and Ecosystem Health, College of Medical, Veterinary and Life Sciences, University of Glasgow, Glasgow G12 8QQ, UK. *Present address: Diagnostic Services Manitoba, Winnipeg, R3A 1R9, Canada.

†Present address: Cardiff School of Biosciences, Cardiff University, Cardiff CF10 3AX, UK.

‡Corresponding author. E-mail: swjreid@rvc.ac.uk (S.W.J.R.); nrt@sanger.ac.uk (N.R.T.)

The global epidemic of multidrug-resistant *Salmonella* Typhimurium DT104 provides an important example, both in terms of the agent and its resistance, of a widely disseminated zoonotic pathogen. Here, with an unprecedented national collection of isolates collected contemporaneously from humans and animals and including a sample of internationally derived isolates, we have used whole-genome sequencing to dissect the phylogenetic relations of the bacterium and its antimicrobial resistance genes through the course of an epidemic. Contrary to current tenets supporting a single homogeneous epidemic, we demonstrate that the bacterium and its resistance genes were largely maintained within animal and human populations separately and that there was limited transmission, in either direction. We also show considerable variation in the resistance profiles, in contrast to the largely stable bacterial core genome, which emphasizes the critical importance of integrated genotypic data sets in understanding the ecology of bacterial zoonoses and antimicrobial resistance.

Salmonella enterica subspecies *enterica* is one of the most common bacterial pathogens of humans and other animals (1, 2). The global burden of disease caused by *Salmonella* infections is substantial, with more than 90 million human cases of gastroenteritis alone occurring each year (3). The annual cost of these infections is estimated to be about €3 billion in the European Union (4) and about \$2.7 billion in the United States (5). The public health impact is exacerbated by antimicrobial resistance (AMR), which leads to increased morbidity, mortality, and treatment costs (6, 7). In our study, the interrelated epidemiologies of *Salmonella* and AMR were examined at the level of the genome. Our results challenge the established view that the human and animal epidemics are synonymous (8–11) and show that the phylogenetic relations both within and between the resistance determinants and the host bacteria are different.

Throughout the 1990s, there was a global epidemic of multidrug-

resistant *S. Typhimurium* definitive type 104 (DT104) in animals and humans (12, 13). The DT104 epidemic was important because of its widespread prevalence and perceived zoonotic nature, as well as the high frequency of resistance to a wide range of commonly used antimicrobials, particularly ampicillin, chloramphenicol, streptomycin, sulfonamides, and tetracycline. The primary source of human DT104 infections is thought to be the animal population, particularly local animals, through both direct contact and food-borne transmission (9, 10, 14). Using whole-genome sequencing, we have studied the course of the epidemic in Scotland, a restricted geographical location that has a well-characterized collection of DT104 bacteria isolated from both humans and other animals over a 22-year period. By interrogating isolates collected from sympatric and contemporaneous hosts and using isolates from geographically diverse hosts from other countries to put them in phylogenetic context, we have an unprecedented opportunity to profile the evolution and spread of a local epidemic of this globally important zoonotic pathogen.

To investigate the evolutionary changes that characterize the long-term epidemic and to assess the roles of animals and humans in the spread of both the bacterium and AMR, we sequenced 142 isolates from humans and 120 isolates from other animals in Scotland sampled from 1990 to 2011. To set the Scottish isolates within a broader international context, 111 isolates were included from other locations around the world (table S1). Sequence reads were mapped against our reference chromosome of DT104 and its virulence plasmid, and genomes were assembled de novo to identify unique regions (15). Maximum likelihood methods were used to produce a phylogenetic tree based on single-nucleotide polymorphisms (SNPs) in the core genome (15). In this tree, we identified a main clade of related DT104 isolates (29 to 123 SNPs compared with the reference core genome) and a separate subset of 14 atypical isolates (620 to 709 SNPs compared with the reference core genome) (fig. S1). Within the main clade, there were 2765 variable sites across the 359 isolates, with pairwise differences between isolates ranging from 0 to 167 SNPs (Fig. 1). Most SNPs were sporadically distributed in the core genome throughout the phylogenetic tree, with relatively few genes showing nonsynonymous SNPs in >5 isolates (fig. S2). These data indicate that the rate of change within the core genome over the 22-year epidemic period, 3.4×10^{-7} substitutions per site per year [95% highest posterior density (HPD) interval: 3.1×10^{-7} to 3.7×10^{-7}], is in line with that seen in other *S. Typhimurium* (16). Although confirmed phenotypically as DT104 by standard phage typing, the 14 atypical iso-

lates are more similar genetically to the non-DT104 *S. Typhimurium* reference strain LT2, which demonstrates the lack of resolution of traditional typing techniques. Isolates from all geographical locations can be found near the root of the tree, consistent with the rapid global spread of DT104 (12). However, many of these isolates, particularly those from England and Wales, can also be found interspersed with Scottish isolates throughout the rest of the tree. The most deeply rooted are primarily derived from humans and do not have *Salmonella* genomic island 1 (SGI1), a 43-kb genomic island with a 13-kb multiple-drug resistance region (17) that is characteristic of the epidemic strain.

To evaluate interspecies transmission and how DT104 circulated in Scotland, Bayesian phylogenetic diffusion models (18, 19) were used to reconstruct the host population of each branch of the phylogenetic tree (Fig. 2A), using the 135 human and 113 animal Scottish DT104 isolates. The most recent common ancestor of DT104 in Scotland is predicted to date to 1968 (95% HPD interval: 1962 to 1976), consistent with reports of antimicrobial-susceptible DT104 strains isolated from human cases of infection since the 1960s in England and Wales (13), with the first report of multidrug-resistant DT104 in Scotland in the mid 1980s (13). What can be observed in Figs. 1 and 2A is that, although there are isolates from a single host population that cluster together, isolates from animals and humans are also interspersed throughout the tree. However, quantification of the association between phylogeny and host population shows that the clustering is not fully randomized (15). Furthermore, similar to the maximum likelihood tree (Fig. 1), the most deeply rooted branches are estimated to be human (Fig. 2A), but it is difficult to infer with certainty the direction of transmission from these observations alone. Overall, the reconstructed host populations of the branches within the tree suggest that there were relatively few animal-to-human or human-to-animal transitions (Fig. 2B). Using Markov jumps to estimate the number of unobserved human-to-animal and animal-to-human transitions along each branch (15), we show the overall numbers of animal-to-human and human-to-animal transitions were similar, which indicates that the majority of human infections in Scotland were unlikely to have been sourced from the local animal population. Markov rewards, from which inferences may be made with respect to which populations might act as sources and which might act as sinks, showed that, although the human isolates represented just 54% of the sample, 62% (666 years, 95% HPD: 545 to 771) of the total phylogenetic tree length was in the human state (15). Conversely, 38% (400 years, 95% HPD: 318 to 521) of the total tree length was spent in the animal state. Our conclusions are consistent when we perform these analyses on animal isolates by species and with only cattle isolates, the main animal reservoir (15, 20). These results support two novel hypotheses: (i) DT104 was predominantly circulating separately within each population in Scotland, with a low frequency of spillover in both directions, and/or (ii) that animals and humans were each sinks for a different and separate source of infection, also with a low level of spillover. Scotland is a net importer of food (21); for example, by value, 58% of all red meat and 38% of raw beef are of non-Scottish origin (22). However, given a lack of surveillance data on food, attribution to this potential source cannot be quantified. Given the likely importance of imported food to the disease burden in humans, the greater global mobility of the human population, and the recognition of this as a risk factor for bacterial infections (23, 24), we suggest that, although these two hypotheses are not mutually exclusive, the second scenario is the more likely.

Our results show that the ecological diversity of AMR, at the level of the genome, is greater in the isolates from the human population than in those from animals and is not tightly coupled to the bacterial evolutionary history. Examining the distribution of the phenotypic AMR profiles throughout the molecular phylogenetic tree (fig. S3) (15) allowed us to investigate the degree to which the evolutionary history of the organism is linked to that of the resistance determinants it carries, regardless of

whether they are genes or SNPs known to confer resistance. We show that isolates demonstrating the same phenotypic resistance profile, even those putatively conferred by SGI1 (17) (fig. S3A), do not cluster together exclusively.

The diversity of AMR was assessed further by interrogating the presence or absence of resistance determinants and profiles in the 147 Scottish isolates selected to cover the range of phenotypic resistance profiles observed in the epidemic period (Fig. 3) (15). A greater number of both resistance determinants and genotypic-resistance profiles are found in the human isolates. As demonstrated by rarefaction analysis (Fig. 3D), these results cannot be accounted for by differential sampling intensity. Multiple, independent recombination events in the multidrug-resistance region occurred, as variants of SGI1 (25), are found throughout the tree (fig. S4). Similarly, although there are some clades with a single AMR gene profile, in many instances, profiles can be found in multiple clades and may be due to the gain or loss by horizontal gene transfer of accessory AMR determinants and their plasmid vectors (tables S2 to S5). Although the propensity for horizontal transmission is well recognized (26), these results provide both a unique insight into the genetic flux occurring across a defined 22-year epidemic and a baseline for the concomitant genetic flux in the DT104 core genome. In contrast to the relatively stable core genome with an expected substitution rate, the AMR features of these isolates varied appreciably throughout the time period.

Most transmission of DT104 has hitherto been considered to be from animals to humans (27–29), but this view has been based primarily on outbreak investigations. However, on the basis of whole-genome sequence analysis, we provide a historical perspective on the epidemic that leads to a different inference. This is the largest study of its kind, utilizing tools with the finest resolution available to investigate the relations of *Salmonella* Typhimurium DT104 and AMR between and within collocated human and animal populations, and has enabled us to address two separate issues with this data set, those of the origins and dissemination of AMR and also of *Salmonella*. First, the greater diversity of AMR genes and profiles in the human DT104 isolates suggests that there were other sources contributing to the diversity of the human resistance burden than the local animals; it is noteworthy that this analysis of molecular data leads to identical conclusions to those based on phenotype (11). Second, we show that a large proportion of transmission of the bacterium appears to have occurred within each host population, and/or that there were separate sources of DT104 for the humans and local animals, with a small degree of spillover in both directions. If the majority of human infections were obtained from locally produced food or direct contact with animals, the human isolates should be a subset of the animal isolates, but we do not observe this.

With humans having a more diverse source of infections than the local animal population, it is probable that imported food, foreign travel, and environmental reservoirs are significant sources of *Salmonella* and AMR in humans in our study (23, 30), but surveillance data simply do not exist in any coherent form locally, nor consistently across the international community, to quantify the importance of these different sources. If we are to address this deficit, there is an urgent need to construct relevant, robust, and harmonized surveillance protocols to capture this information. Similarly, although the Scottish isolates are similar to those from other countries, this investigation needs to be conducted in other organisms and environments to determine the generality of our conclusions across different agricultural, political, and sociological conditions. This study challenges current views on the contribution of the local animal reservoir as a source of *Salmonella* and AMR in humans. It demonstrates the critical importance of acquiring targeted genotypic data sets integrated across the veterinary and public health sectors in order to understand the ecology of bacterial zoonoses, identify the sources of AMR, and formulate responsible evidence-based control strategies.

References and Notes

- H. Herikstad, Y. Motarjemi, R. V. Tauxe, *Salmonella* surveillance: A global survey of public health serotyping. *Epidemiol. Infect.* **129**, 1–8 (2002). doi:10.1017/S0950268802006842 [Medline](#)
- T. S. Wallis, P. A. Barrow, in *EcoSal—Escherichia coli and Salmonella: Cellular and Molecular Biology*, G. Dougan, Ed. (ASM Press, Washington, DC, 2005).
- S. E. Majowicz, J. Musto, E. Scallan, F. J. Angulo, M. Kirk, S. J. O'Brien, T. F. Jones, A. Fazil, R. M. Hoekstra, The global burden of nontyphoidal *Salmonella* gastroenteritis. *Clin. Infect. Dis.* **50**, 882–889 (2010). doi:10.1086/650733 [Medline](#)
- European Food Safety Authority (EFSA), *Salmonella* (2011); www.efsa.europa.eu/en/topics/topic/salmonella.htm.
- U.S. Department of Agriculture, Foodborne Illness Cost Calculator (2011); http://webarchives.cdlib.org/sw1rf5mh0k/http://www.ers.usda.gov/Data/FoodborneIllness/.
- J. J. Engemann, Y. Carmeli, S. E. Cosgrove, V. G. Fowler, M. Z. Bronstein, S. L. Trivette, J. P. Briggs, D. J. Sexton, K. S. Kaye, Adverse clinical and economic outcomes attributable to methicillin resistance among patients with *Staphylococcus aureus* surgical site infection. *Clin. Infect. Dis.* **36**, 592–598 (2003). doi:10.1086/367653 [Medline](#)
- S. C. Davies, “Annual Report of the Chief Medical Officer; volume two, 2011: Infections and the rise of antimicrobial resistance” (Department of Health, London, 2013)
- M. K. Glynn, C. Bopp, W. Dewitt, P. Dabney, M. Mokhtar, F. J. Angulo, Emergence of multidrug-resistant *Salmonella enterica* serotype Typhimurium DT104 infections in the United States. *N. Engl. J. Med.* **338**, 1333–1339 (1998). doi:10.1056/NEJM199805073381901 [Medline](#)
- P. G. Wall, D. Morgan, K. Lamden, M. Griffin, E. J. Threlfall, L. R. Ward, B. Rowe, Transmission of multi-resistant strains of *Salmonella typhimurium* from cattle to man. *Vet. Rec.* **136**, 591–592 (1995). doi:10.1136/vr.136.23.591 [Medline](#)
- A. M. Dechet, E. Scallan, K. Gensheimer, R. Hoekstra, J. Gunderman-King, J. Lockett, D. Wrigley, W. Chege, J. Sobel, Outbreak of multidrug-resistant *Salmonella enterica* serotype Typhimurium Definitive Type 104 infection linked to commercial ground beef, northeastern United States, 2003–2004. *Clin. Infect. Dis.* **42**, 747–752 (2006). doi:10.1086/500320 [Medline](#)
- A. E. Mather, L. Matthews, D. J. Mellor, R. Reeve, M. J. Denwood, P. Boerlin, R. J. Reid-Smith, D. J. Brown, J. E. Coia, L. M. Browning, D. T. Haydon, S. W. Reid, An ecological approach to assessing the epidemiology of antimicrobial resistance in animal and human populations. *Proc. Biol. Sci.* **279**, 1630–1639 (2012). doi:10.1098/rspb.2011.1975 [Medline](#)
- M. Helms, S. Ethelberg, K. Mølbak, International *Salmonella* Typhimurium DT104 infections, 1992–2001. *Emerg. Infect. Dis.* **11**, 859–867 (2005). doi:10.3201/eid1106.041017 [Medline](#)
- E. J. Threlfall, Epidemic *Salmonella typhimurium* DT 104—a truly international multiresistant clone. *J. Antimicrob. Chemother.* **46**, 7–10 (2000). doi:10.1093/jac/46.1.7 [Medline](#)
- T. E. Besser, M. Goldoft, L. C. Pritchett, R. Khakhria, D. D. Hancock, D. H. Rice, J. M. Gay, W. Johnson, C. C. Gay, Multiresistant *Salmonella* Typhimurium DT104 infections of humans and domestic animals in the Pacific Northwest of the United States. *Epidemiol. Infect.* **124**, 193–200 (2000). doi:10.1017/S0950268899003283 [Medline](#)
- Materials and methods are available as supplementary materials on *Science* online.
- C. K. Okoro, R. A. Kingsley, T. R. Connor, S. R. Harris, C. M. Parry, M. N. Al-Mashhadani, S. Kariuki, C. L. Msefula, M. A. Gordon, E. de Pinna, J. Wain, R. S. Heyderman, S. Obaro, P. L. Alonso, I. Mandomando, C. A. MacLennan, M. D. Tapia, M. M. Levine, S. M. Tennant, J. Parkhill, G. Dougan, Intracontinental spread of human invasive *Salmonella* Typhimurium pathovariants in sub-Saharan Africa. *Nat. Genet.* **44**, 1215–1221 (2012). doi:10.1038/ng.2423 [Medline](#)
- D. Boyd, G. A. Peters, A. Cloeckaert, K. S. Boumedine, E. Chaslus-Dancla, H. Imberechts, M. R. Mulvey, Complete nucleotide sequence of a 43-kilobase genomic island associated with the multidrug resistance region of *Salmonella enterica* serovar Typhimurium DT104 and its identification in phage type DT120 and serovar Agona. *J. Bacteriol.* **183**, 5725–5732 (2001). doi:10.1128/JB.183.19.5725-5732.2001 [Medline](#)
- A. J. Drummond, M. A. Suchard, D. Xie, A. Rambaut, Bayesian phylogenetics with BEAUti and the BEAST 1.7. *Mol. Biol. Evol.* **29**, 1969–1973 (2012). doi:10.1093/molbev/mss075 [Medline](#)
- P. Lemey, A. Rambaut, A. J. Drummond, M. A. Suchard, Bayesian phylogeography finds its roots. *PLOS Comput. Biol.* **5**, e1000520 (2009). doi:10.1371/journal.pcbi.1000520 [Medline](#)
- N. Calvert, W. C. Stewart, W. J. Reilly, *Salmonella typhimurium* DT104 infection in people and animals in Scotland: A collaborative epidemiological study 1993–96. *Vet. Rec.* **143**, 351–354 (1998). doi:10.1136/vr.143.13.351 [Medline](#)
- “Food and drink in Scotland: Key facts 2012” (Scottish Government, Edinburgh, 2012); www.scotland.gov.uk/Resource/0038/00389160.pdf.
- C. Revoredo-Giha, W. Wrieden, B. Kupiec-Teahan, P. Leat, A. Fearne, L. Cacciolatti, “Analysis of red and processed meat purchases in Scotland using representative supermarket panel data” (Food Standards Agency in Scotland, Aberdeen, 2009); www.foodbase.org.uk/admintools/reportdocuments/338-1-594_S14046.pdf.
- M. A. Davis, D. D. Hancock, T. E. Besser, Multiresistant clones of *Salmonella enterica*: The importance of dissemination. *J. Lab. Clin. Med.* **140**, 135–141 (2002). doi:10.1067/mlc.2002.126411 [Medline](#)
- L. Skjøl-Rasmussen, S. Ethelberg, H. D. Emborg, Y. Agersø, L. S. Larsen, S. Nordentoft, S. S. Olsen, T. Ejlersen, H. Holt, E. M. Nielsen, A. M. Hammer, Trends in occurrence of antimicrobial resistance in *Campylobacter jejuni* isolates from broiler chickens, broiler chicken meat, and human domestically acquired cases and travel associated cases in Denmark. *Int. J. Food Microbiol.* **131**, 277–279 (2009). doi:10.1016/j.ijfoodmicro.2009.03.006 [Medline](#)
- M. R. Mulvey, D. A. Boyd, A. B. Olson, B. Doublet, A. Cloeckaert, The genetics of *Salmonella* genomic island 1. *Microbes Infect.* **8**, 1915–1922 (2006). doi:10.1016/j.micinf.2005.12.028 [Medline](#)
- A. O. Summers, Genetic linkage and horizontal gene transfer, the roots of the antibiotic multi-resistance problem. *Anim. Biotechnol.* **17**, 125–135 (2006). doi:10.1080/10495390600957217 [Medline](#)
- K. Mølbak, D. L. Baggesen, F. M. Aarestrup, J. M. Ebbesen, J. Engberg, K. Frydendahl, P. Gerner-Smidt, A. M. Petersen, H. C. Wegener, An outbreak of multidrug-resistant, quinolone-resistant *Salmonella enterica* serotype Typhimurium DT104. *N. Engl. J. Med.* **341**, 1420–1425 (1999). doi:10.1056/NEJM199911043411902 [Medline](#)
- D. L. Fone, R. M. Barker, Associations between human and farm animal infections with *Salmonella typhimurium* DT104 in Herefordshire. *Commun. Dis. Rep. CDR Rev.* **4**, R136–R140 (1994). [Medline](#)
- F. J. Angulo, K. R. Johnson, R. V. Tauxe, M. L. Cohen, Origins and consequences of antimicrobial-resistant nontyphoidal *Salmonella*: Implications for the use of fluoroquinolones in food animals. *Microb. Drug Resist.* **6**, 77–83 (2000). doi:10.1089/mdr.2000.6.77 [Medline](#)
- S. Zhao, P. F. McDermott, S. Friedman, S. Qaiyumi, J. Abbott, C. Kiessling, S. Ayers, R. Singh, S. Hubert, J. Sofos, D. G. White, Characterization of antimicrobial-resistant *Salmonella* isolated from imported foods. *J. Food Prot.* **69**, 500–507 (2006). [Medline](#)
- S. Evans, R. Davies, Case control study of multiple-resistant *Salmonella typhimurium* DT104 infection of cattle in Great Britain. *Vet. Rec.* **139**, 557–558 (1996). [Medline](#)
- J. Parkhill, G. Dougan, K. D. James, N. R. Thomson, D. Pickard, J. Wain, C. Churcher, K. L. Mungall, S. D. Bentley, M. T. Holden, M. Sebahia, S. Baker, D. Basham, K. Brooks, T. Chillingworth, P. Connor, A. Cronin, P. Davis, R. M. Davies, L. Dowd, N. White, J. Farrar, T. Feltwell, N. Hamlin, A. Haque, T. T. Hien, S. Holroyd, K. Jagels, A. Krogh, T. S. Larsen, S. Leather, S. Moule, P. O'Gaora, C. Parry, M. Quail, K. Rutherford, M. Simmonds, J. Skelton, K. Stevens, S. Whitehead, B. G. Barrell, Complete genome sequence of a multiple drug resistant *Salmonella enterica* serovar Typhi CT18. *Nature* **413**, 848–852 (2001). doi:10.1038/35101607 [Medline](#)
- L. Le Minor, in *Bergey's Manual of Systematic Bacteriology*, volume 1, N. R. Krieg, J. G. Holt, Eds. (Williams and Wilkins, Baltimore, 1984), pp. 427–458.
- B. R. Callow, A new phage-typing scheme for *Salmonella typhi-murium*. *J. Hyg. (London)* **57**, 346–359 (1959). doi:10.1017/S0022172400020209 [Medline](#)
- L. R. Ward, J. D. H. de Sa, B. Rowe, A phage-typing scheme for *Salmonella enteritidis*. *Epidemiol. Infect.* **99**, 291–294 (1987). doi:10.1017/S0950268800067765 [Medline](#)
- L. M. Browning, D. J. Brown, J. E. Coia, J. M. Cowden, H. Mather,

- Antimicrobial resistance of *Salmonella* in Scotland, 2005 (excluding *S. Typhi* and *S. Paratyphi*). *HPS Weekly Rep.* **41**, 172 (2007).
37. Clinical and Laboratory Standards Institute (CLSI), "Performance standards for antimicrobial disk susceptibility tests" (CLSI document M02-A10, CLSI, Wayne, PA, ed. 11, 2011)
 38. CLSI, "Performance standards for antimicrobial susceptibility testing: 21st information supplement M100-S21" (CLSI, Wayne, PA, 2011)
 39. Canadian Integrated Program for Antimicrobial Resistance Surveillance (CIPARS), (2007); www.phac-aspc.gc.ca/cipars-picra/index-eng.php.
 40. M. R. Mulvey, D. A. Boyd, R. Finley, K. Fakharuddin, S. Langner, V. Allen, L. Ang, S. Bekal, S. El Bailey, D. Haldane, L. Hoang, G. Horsman, M. Louis, L. Robberts, J. Wylie, Ciprofloxacin-resistant *Salmonella enterica* serovar Kentucky in Canada. *Emerg. Infect. Dis.* **19**, 999–1001 (2013). [doi:10.3201/eid1906.121351](https://doi.org/10.3201/eid1906.121351) [Medline](#)
 41. CLSI, "Performance standards for antimicrobial susceptibility testing: Eighteenth informational supplement. CLSI document M100-S18" (Clinical and Laboratory Standards Institute, Wayne, PA, 2008)
 42. Animal Health and Veterinary Laboratories Agency (AHVLA), in Antimicrobial sensitivity in *Salmonella*" (Animal Health and Veterinary Laboratories Agency, Addlestone, Surrey, 2011), chap. 12; www.defra.gov.uk/ahvla-en/files/pub-salm11-chp12.pdf.
 43. J. A. Frost, in *Methods in Practical Laboratory Bacteriology*, H. Chart, Ed. (CRC Press, New York, 1994), pp. 73–82.
 44. Wellcome Trust Sanger Institute (WTSI), "SMALT: Pairwise sequence alignment program" (WTSI, Hinxton, UK, 2013); www.sanger.ac.uk/resources/software/smalt/.
 45. F. J. Cooke, J. Wain, M. Fookes, A. Ivens, N. Thomson, D. J. Brown, E. J. Threlfall, G. Gunn, G. Foster, G. Dougan, Prophage sequences defining hot spots of genome variation in *Salmonella enterica* serovar Typhimurium can be used to discriminate between field isolates. *J. Clin. Microbiol.* **45**, 2590–2598 (2007). [doi:10.1128/JCM.00729-07](https://doi.org/10.1128/JCM.00729-07) [Medline](#)
 46. F. J. Cooke, D. J. Brown, M. Fookes, D. Pickard, A. Ivens, J. Wain, M. Roberts, R. A. Kingsley, N. R. Thomson, G. Dougan, Characterization of the genomes of a diverse collection of *Salmonella enterica* serovar Typhimurium definitive phage type 104. *J. Bacteriol.* **190**, 8155–8162 (2008). [doi:10.1128/JB.00636-08](https://doi.org/10.1128/JB.00636-08) [Medline](#)
 47. S. R. Harris, E. J. Feil, M. T. Holden, M. A. Quail, E. K. Nickerson, N. Chantratita, S. Gardete, A. Tavares, N. Day, J. A. Lindsay, J. D. Edgeworth, H. de Lencastre, J. Parkhill, S. J. Peacock, S. D. Bentley, Evolution of MRSA during hospital transmission and intercontinental spread. *Science* **327**, 469–474 (2010). [doi:10.1126/science.1182395](https://doi.org/10.1126/science.1182395) [Medline](#)
 48. N. J. Croucher, S. R. Harris, C. Fraser, M. A. Quail, J. Burton, M. van der Linden, L. McGee, A. von Gottberg, J. H. Song, K. S. Ko, B. Pichon, S. Baker, C. M. Parry, L. M. Lambertsen, D. Shahinas, D. R. Pillai, T. J. Mitchell, G. Dougan, A. Tomasz, K. P. Klugman, J. Parkhill, W. P. Hanage, S. D. Bentley, Rapid pneumococcal evolution in response to clinical interventions. *Science* **331**, 430–434 (2011). [doi:10.1126/science.1198545](https://doi.org/10.1126/science.1198545) [Medline](#)
 49. A. Stamatakis, RAxML-VI-HPC: Maximum likelihood-based phylogenetic analyses with thousands of taxa and mixed models. *Bioinformatics* **22**, 2688–2690 (2006). [doi:10.1093/bioinformatics/btl446](https://doi.org/10.1093/bioinformatics/btl446) [Medline](#)
 50. I. Letunic, P. Bork, Interactive Tree Of Life (iTOL): An online tool for phylogenetic tree display and annotation. *Bioinformatics* **23**, 127–128 (2007). [doi:10.1093/bioinformatics/btl529](https://doi.org/10.1093/bioinformatics/btl529) [Medline](#)
 51. I. Letunic, P. Bork, Interactive Tree Of Life v2: Online annotation and display of phylogenetic trees made easy. *Nucleic Acids Res.* **39**(suppl.), W475–W478 (2011). [doi:10.1093/nar/gkr201](https://doi.org/10.1093/nar/gkr201) [Medline](#)
 52. A. J. Drummond, S. Y. Ho, M. J. Phillips, A. Rambaut, Relaxed phylogenetics and dating with confidence. *PLoS Biol.* **4**, e88 (2006). [doi:10.1371/journal.pbio.0040088](https://doi.org/10.1371/journal.pbio.0040088) [Medline](#)
 53. R. C. Griffiths, S. Tavaré, Sampling theory for neutral alleles in a varying environment. *Philos. Trans. R. Soc. London B Biol. Sci.* **344**, 403–410 (1994). [doi:10.1098/rstb.1994.0079](https://doi.org/10.1098/rstb.1994.0079) [Medline](#)
 54. A. J. Drummond, G. K. Nicholls, A. G. Rodrigo, W. Solomon, Estimating mutation parameters, population history and genealogy simultaneously from temporally spaced sequence data. *Genetics* **161**, 1307–1320 (2002). [Medline](#)
 55. D. R. Zerbino, E. Birney, Velvet: Algorithms for *de novo* short read assembly using de Bruijn graphs. *Genome Res.* **18**, 821–829 (2008). [doi:10.1101/gr.074492.107](https://doi.org/10.1101/gr.074492.107) [Medline](#)
 56. D. Boyd, A. Cloeckeaert, E. Chalus-Dancla, M. R. Mulvey, Characterization of variant *Salmonella* genomic island 1 multidrug resistance regions from serovars Typhimurium DT104 and Agona. *Antimicrob. Agents Chemother.* **46**, 1714–1722 (2002). [doi:10.1128/AAC.46.6.1714-1722.2002](https://doi.org/10.1128/AAC.46.6.1714-1722.2002) [Medline](#)
 57. A. T. T. Vo, E. van Duijkeren, A. C. Fluit, W. Gaastra, A novel *Salmonella* genomic island 1 and rare integron types in *Salmonella* Typhimurium isolates from horses in The Netherlands. *J. Antimicrob. Chemother.* **59**, 594–599 (2007). [doi:10.1093/jac/dk1531](https://doi.org/10.1093/jac/dk1531) [Medline](#)
 58. H. Targant, B. Doublet, F. M. Aarestrup, A. Cloeckeaert, J.-Y. Madec, IS6100-mediated genetic rearrangement within the complex class 1 integron In104 of the *Salmonella* genomic island 1. *J. Antimicrob. Chemother.* **65**, 1543–1545 (2010). [doi:10.1093/jac/dkq163](https://doi.org/10.1093/jac/dkq163) [Medline](#)
 59. G. B. Michael, P. Butaye, A. Cloeckeaert, S. Schwarz, Genes and mutations conferring antimicrobial resistance in *Salmonella*: An update. *Microbes Infect.* **8**, 1898–1914 (2006). [doi:10.1016/j.micinf.2005.12.019](https://doi.org/10.1016/j.micinf.2005.12.019) [Medline](#)
 60. A. Moura, M. Soares, C. Pereira, N. Leitão, I. Henriques, A. Correia, INTEGRALL: A database and search engine for integrons, integrases and gene cassettes. *Bioinformatics* **25**, 1096–1098 (2009). [doi:10.1093/bioinformatics/btp105](https://doi.org/10.1093/bioinformatics/btp105) [Medline](#)
 61. H. Chen, VennDiagram: Generate high-resolution Venn and Euler plots. 1.6.0 (R Foundation for Statistical Computing, Vienna, 2013).
 62. R Foundation for Statistical Computing, *R: A Language and Environment for Statistical Computing 3.0.0* (R Foundation for Statistical Computing, Vienna, 2013).
 63. J. Oksanen *et al.*, *VEGAN: Community Ecology Package.2.0-7* (R Foundation for Statistical Computing, Vienna, 2013).
 64. G. Baele, P. Lemey, T. Bedford, A. Rambaut, M. A. Suchard, A. V. Alekseyenko, Improving the accuracy of demographic and molecular clock model comparison while accommodating phylogenetic uncertainty. *Mol. Biol. Evol.* **29**, 2157–2167 (2012). [doi:10.1093/molbev/mss084](https://doi.org/10.1093/molbev/mss084) [Medline](#)
 65. M. A. R. Ferreira, M. A. Suchard, Bayesian analysis of elapsed times in continuous-time Markov chains. *Can. J. Stat.* **36**, 355–368 (2008). [doi:10.1002/cjs.5550360302](https://doi.org/10.1002/cjs.5550360302)
 66. V. N. Minin, M. A. Suchard, Counting labeled transitions in continuous-time Markov models of evolution. *J. Math. Biol.* **56**, 391–412 (2008). [doi:10.1007/s00285-007-0120-8](https://doi.org/10.1007/s00285-007-0120-8) [Medline](#)
 67. V. N. Minin, M. A. Suchard, Fast, accurate and simulation-free stochastic mapping. *Philos. Trans. R. Soc. London B Biol. Sci.* **363**, 3985–3995 (2008). [doi:10.1098/rstb.2008.0176](https://doi.org/10.1098/rstb.2008.0176) [Medline](#)
 68. M. Pagel, A. Meade, D. Barker, Bayesian estimation of ancestral character states on phylogenies. *Syst. Biol.* **53**, 673–684 (2004). [doi:10.1080/10635150490522232](https://doi.org/10.1080/10635150490522232) [Medline](#)
 69. D. L. Ayres, A. Darling, D. J. Zwickl, P. Beerli, M. T. Holder, P. O. Lewis, J. P. Huelsenbeck, F. Ronquist, D. L. Swofford, M. P. Cummings, A. Rambaut, M. A. Suchard, BEAGLE: An application programming interface and high-performance computing library for statistical phylogenetics. *Syst. Biol.* **61**, 170–173 (2012). [doi:10.1093/sysbio/syr100](https://doi.org/10.1093/sysbio/syr100) [Medline](#)
 70. T. H. Wang, Y. K. Donaldson, R. P. Brettell, J. E. Bell, P. Simmonds, Identification of shared populations of human immunodeficiency virus type 1 infecting microglia and tissue macrophages outside the central nervous system. *J. Virol.* **75**, 11686–11699 (2001). [doi:10.1128/JVI.75.23.11686-11699.2001](https://doi.org/10.1128/JVI.75.23.11686-11699.2001) [Medline](#)
- Acknowledgments:** A.E.M. was funded by the William Stewart Fellowship while at the University of Glasgow. A.E.M., S.R.H., M.C.F., T.R.C., J.P., and N.R.T. are supported by Wellcome Trust grant 098051. P.L. and M.A.S. acknowledge funding from the European Union Seventh Framework Programme (FP7/2007-2013) under European Research Council Grant agreement no. 260864. M.A.S. is supported in part by NIH R01 grants A1107034 and HG006139 and NSF grant DMS-1264153. The authors would like to thank J. Cotton (Wellcome Trust Sanger Institute) for helpful discussions and assistance. Genome sequences are deposited with the European Nucleotide Archive (study accessions ERP000244, ERP000270, ERP000994) and DNA Data Bank of Japan (accession DRA000942). The finished chromosome and plasmid for *Salmonella* Typhimurium DT104 are submitted to the European Molecular Biology Laboratory, accessions HF937208 and HF937209, respectively.
- Supplementary Materials**
www.sciencemag.org/cgi/content/full/science.1240578/DC1

EMBARGOED UNTIL 2:00 PM US ET, THURSDAY, 12 SEPTEMBER 2013

Materials and Methods

Figs. S1 to S7

Tables S1 to S12

References (31–70)

15 May 2013; accepted 16 August 2013

Published online 12 September 2013

10.1126/science.1240578

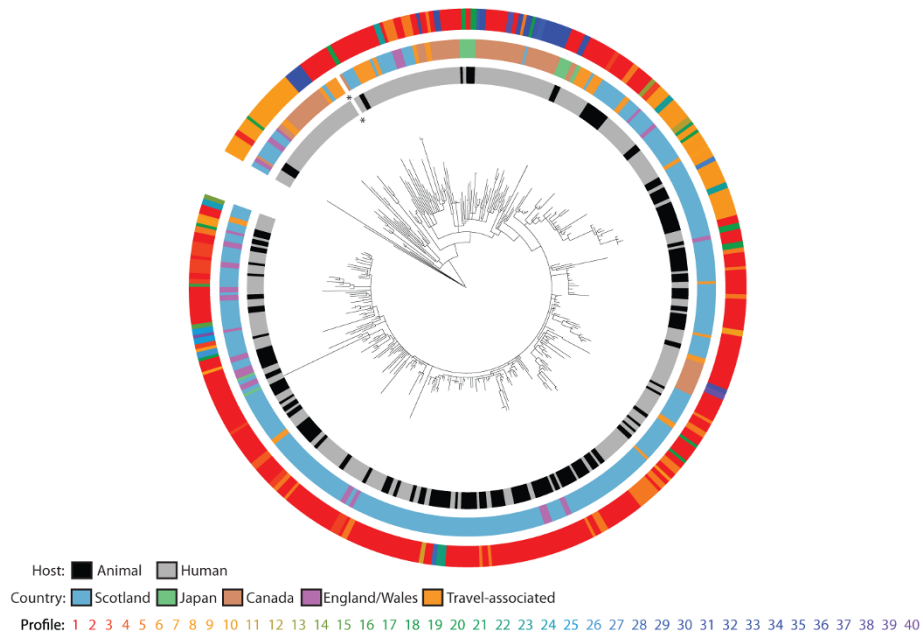


Fig. 1. Phylogeny of Scottish and global *S. Typhimurium* DT104, rooted on *S. Typhimurium* SL1344. Colored rings indicate, from the center out, the host and country of origin, and the unique genotypic AMR profile of each isolate (table S6); the asterisk indicates the location of the reference isolate HF937208. The same tree with bootstrap values added is shown in fig. S5.

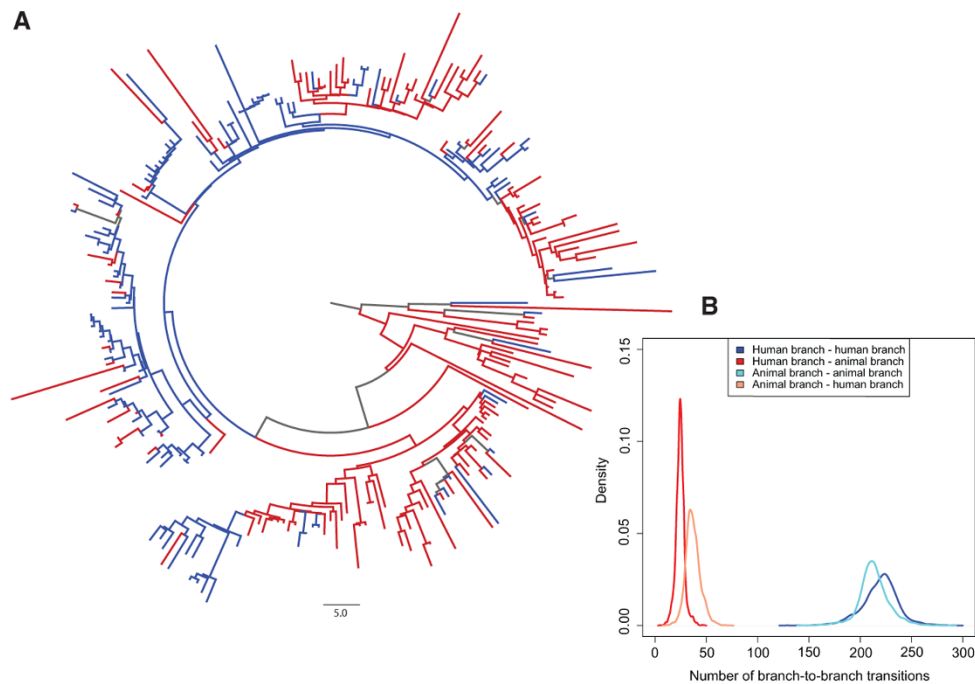


Fig. 2. Bayesian maximum clade credibility phylogenetic tree and most probable ancestral state reconstruction of host population for *S. Typhimurium* DT104 in Scotland. (A) Branches with a reconstructed state (host population) posterior probability of >0.75 are colored red for human, blue for animal; branches with a state probability of <0.75 are colored gray. The same tree is shown in fig. S6 with branch width scaled by the posterior probabilities. (B) Posterior density plot of the numbers of human branches ancestral to human branches, human branches ancestral to animal branches, animal branches ancestral to human branches, and animal branches ancestral to animal branches integrated over the subsample of 3600 phylogenetic trees with reconstructed host population states along branches obtained by using BEAST. These results suggest (i) circulation of DT104 predominantly within animals and humans separately, with only a low frequency of spillover in both directions, and/or (ii) animals and humans were each sinks for different and separate sources of infection, with only a low frequency of spillover in both directions.

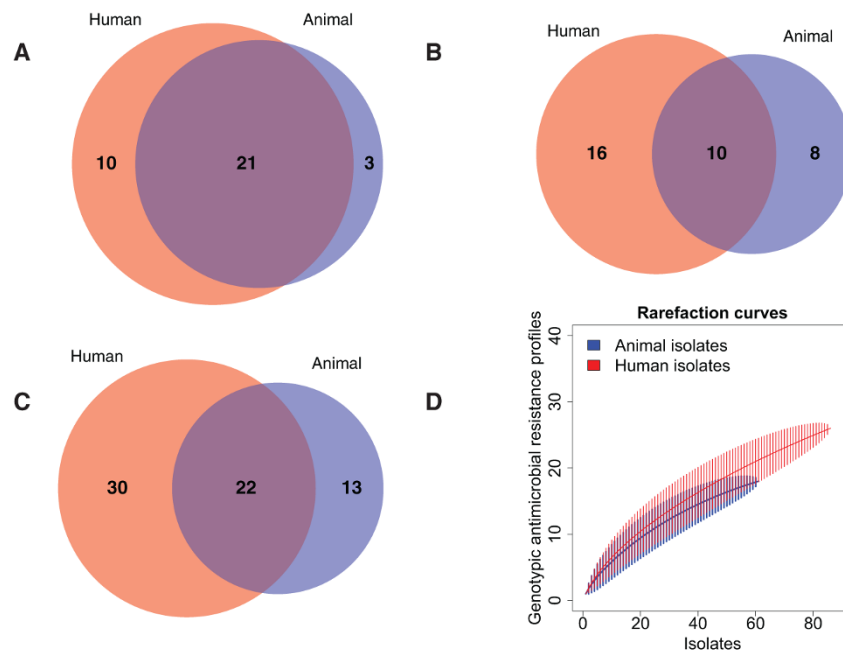


Fig. 3. Venn diagrams demonstrating the degree of overlap in AMR between the human and animal populations of *S. Typhimurium* DT104. (A) The numbers of shared and unique AMR determinants (acquired resistance genes or SNPs known to confer resistance) in the 147 Scottish human and animal DT104 isolates investigated for AMR diversity; **(B)** the numbers of shared and unique AMR profiles (unique combinations of AMR determinants) in the 147 isolates; **(C)** the numbers of shared and unique AMR phenotypic profiles (unique combinations of AMR phenotypes) in the original 5200 surveillance isolates of DT104, 1990–2004, Scotland (11). **(D)** Rarefaction curves, with 95% confidence intervals (vertical lines), of the number of genotypic AMR profiles in the 147 isolates investigated for AMR diversity, demonstrating similar sampling intensity.