

Social stress-enhanced severity of *Citrobacter rodentium*-induced colitis is CCL2-dependent and attenuated by probiotic *Lactobacillus reuteri*

AR Mackos^{1,7}, JD Galley^{1,7}, TD Eubank², RS Easterling³, NM Parry⁴, JG Fox⁴, M Lyte⁵ and MT Bailey^{3,6}

Psychological stressors are known to affect colonic diseases but the mechanisms by which this occurs, and whether probiotics can prevent stressor effects, are not understood. Because inflammatory monocytes that traffic into the colon can exacerbate colitis, we tested whether CCL2, a chemokine involved in monocyte recruitment, was necessary for stressor-induced exacerbation of infectious colitis. Mice were exposed to a social disruption stressor that entails repeated social defeat. During stressor exposure, mice were orally challenged with *Citrobacter rodentium* to induce a colonic inflammatory response. Exposure to the stressor during challenge resulted in significantly higher colonic pathogen levels, translocation to the spleen, increases in colonic macrophages, and increases in inflammatory cytokines and chemokines. The stressor-enhanced severity of *C. rodentium*-induced colitis was not evident in CCL2^{-/-} mice, indicating the effects of the stressor are CCL2-dependent. In addition, we tested whether probiotic intervention could attenuate stressor-enhanced infectious colitis by reducing monocyte/macrophage accumulation. Treating mice with probiotic *Lactobacillus reuteri* reduced CCL2 mRNA levels in the colon and attenuated stressor-enhanced infectious colitis. These data demonstrate that probiotic *L. reuteri* can prevent the exacerbating effects of stressor exposure on pathogen-induced colitis, and suggest that one mechanism by which this occurs is through downregulation of the chemokine CCL2.

INTRODUCTION

Chronic idiopathic inflammatory bowel diseases (IBD), including Crohn's disease and ulcerative colitis, affect millions of Americans.^{1,2} The exact etiology of IBD is unknown, but evidence from laboratory animals, as well as human patients, indicate that IBD involves disrupted homeostatic interactions between the microbiota and the mucosal immune system as a result of multiple genetic and environmental signals.³ One environmental factor that contributes to the severity of IBD is psychosocial stress. In animal models, a variety of different types of stressors, ranging from acute restraint to water avoidance stress, have been shown to exacerbate chemically

induced,⁴ spontaneous,⁵ and pathogen-induced colitis.^{6,7} Moreover, multiple studies involving human participants indicate that perceived life stress is associated with increased disease severity as well as frequency of relapses.⁸⁻¹¹ The mechanisms linking the physiological stress response to disease exacerbation, however, are not yet understood.

Macrophages in the large intestine are important contributors to diverse physiological processes, including maintenance of mucosal homeostasis, removal of pathogens, and development of tissue-damaging inflammatory responses.^{12,13} These cells are continuously replenished by recruiting monocytes from the bone marrow through chemokine production.¹²

¹Biosciences, College of Dentistry, The Ohio State University, Columbus, Ohio, USA. ²Division of Pulmonary, Allergy, Critical Care, and Sleep Medicine, Wexner Medical Center, The Ohio State University, Columbus, Ohio, USA. ³Institute for Behavioral Medicine Research, College of Medicine, The Ohio State University, Columbus, Ohio, USA. ⁴Department of Comparative Medicine, Massachusetts Institute of Technology, Cambridge, Massachusetts, USA. ⁵Department of Veterinary Microbiology and Preventative Medicine, College of Veterinary Medicine, Iowa State University, Ames, Iowa, USA and ⁶Center for Microbial Pathogenesis, The Research Institute at Nationwide Children's Hospital, Columbus, Ohio, USA. Correspondence: MT Bailey (Michael.Bailey2@nationwidechildrens.org)

⁷These authors contributed equally to this work.

Received 17 December 2014; accepted 1 August 2015; published online 30 September 2015. doi:10.1038/mi.2015.81

During periods of quiescence CX₃CR1^{hi}Ly6C^{lo} “patrolling” monocytes can migrate to the colon where they differentiate into CX₃CR1^{hi}Ly6C^{lo} resident macrophages that have high phagocytic capacity, but are not prolific producers of inflammatory cytokines.¹⁴ A second subset of monocytes, i.e., CX₃CR1^{lo}Ly6C^{hi} inflammatory monocytes, also traffic into the intestines. In the absence of inflammation, these cells differentiate into resident macrophages.¹⁴ However, during periods of colitis, CCR2 expression on CX₃CR1^{lo}Ly6C⁺ inflammatory monocytes is necessary for recruitment from the bone marrow by the chemokine CCL2.¹⁵ During pathogen-induced colitis, these CCR2⁺CX₃CR1^{lo}Ly6C^{hi} cells are necessary for clearance of the pathogen, but are also known to be prolific producers of inflammatory cytokines like tumor necrosis factor (TNF)- α .¹⁶ We have previously shown that exposure to a chronic stressor, namely prolonged restraint, resulted in significant increases in colonic TNF- α upon oral challenge with *C. rodentium*.⁷ Because of the ability of CCR2⁺CX₃CR1^{lo}Ly6C^{hi} cells to produce TNF- α , this study determined whether stressor-enhanced severity of *C. rodentium*-induced colitis were CCL2-dependent.

Recently, we have employed the more ethologically relevant stressor known as social disruption (SDR), which involves repeated social defeat by an aggressive intruder. Exposure to SDR results in an increase in the number of CD11b⁺Ly6C^{hi} monocytes in the bone marrow, circulation, and spleen.^{17,18} Transcriptomic analysis indicates that these cells have an increased capacity to produce inflammatory cytokines, including TNF- α .¹⁹ This is consistent with previous findings demonstrating that exposure to SDR primes splenic CD11b⁺ cells for enhanced reactivity to microbial stimulation.¹⁹ It is not yet known, however, whether exposure to SDR will enhance the ability of these cells to traffic to the colon in response to CCL2 during pathogen challenge. Thus, mice were exposed to the SDR stressor during oral challenge with the colonic pathogen *Citrobacter rodentium*.

C. rodentium is a natural murine colonic pathogen, which induces a colonic inflammatory response resembling colonic inflammation in human IBD patients^{20,21} and includes infiltration of leukocytes, including inflammatory monocytes, production of inflammatory cytokines, such as TNF- α , and mediators, such as iNOS, and disruptions to the epithelial barrier. Interestingly, commensal probiotic microbes, including bacteria in the genus *Lactobacillus*, have the capacity to modify the progression of *C. rodentium*-induced colitis.^{7,22} Our previous studies demonstrate that exposing animals to different types of stressors significantly disrupts the structure of the intestinal microbiota, with the most consistent finding being reductions in lactobacilli levels.^{6,23–25} During exposure to a SDR stressor, the absolute abundance of colonic *Lactobacillus reuteri* was found to be significantly reduced.²⁶ Because *L. reuteri* potently suppresses inflammatory responses,²⁷ it is possible that the loss of this protective bacteria may contribute to stressor-enhanced infectious colitis. Therefore, we hypothesized that administering *L. reuteri* during stressor exposure would prevent the exacerbating effects of stress on *C. rodentium*-induced colitis.

RESULTS

Stressor-induced increases in *C. rodentium* levels are not affected by *L. reuteri*

Exposure to SDR significantly increased the number of *C. rodentium* shed from the intestines over the 24-day experiment ($P < 0.01$; **Figure 1a**). This was noted primarily by increased *C. rodentium* colony-forming units (CFU's) on Days 6 and 12 post challenge ($P < 0.05$). Importantly, treating mice with *L. reuteri* did not significantly impact fecal *C. rodentium* levels in SDR-exposed or non-stressed control mice (**Figure 1a**).

L. reuteri attenuates the stressor-induced increase in colonic pathology

In addition to elevating *C. rodentium* levels, SDR-exposure during oral challenge with *C. rodentium* significantly increased colon mass on Days 6, 12, and 24 post challenge ($P < 0.05$; **Figure 1b**). In mice treated with *L. reuteri*, however, SDR-exposure did not affect colon weight until Day 24 post challenge ($P < 0.05$; **Figure 1b**). In addition to increasing colon weight, SDR-exposure during *C. rodentium* challenge increased *C. rodentium*-induced colitis in vehicle-treated mice (**Figure 1c and d**). This was a main effect for stressor exposure ($P < 0.05$), indicating that in general, mice exposed to the stressor had a higher colitis score during the 24 days post challenge. Protected *t*-tests were conducted on Days 6 and 12 post challenge to test the *a priori* hypothesis that stressor exposure would enhance colitis during time points across the peak of infection. As predicted, *C. rodentium*-infected, vehicle-treated mice exposed to SDR had significantly higher colitis scores on Days 6 and 12 post challenge ($P < 0.05$; **Figure 1c and d**). These effects were not as evident in *L. reuteri*-treated mice (**Figure 1c and d**), although stressor exposure still resulted in a significant main effect for this group ($P < 0.05$). In this case, however, protected *t*-tests indicated that there was no difference between colitis scores in non-stressed home cage control (HCC Control) and SDR-exposed mice on Day 6 post challenge, and only a trend toward a significant difference on Day 12 post challenge ($P = 0.08$; **Figure 1c**).

L. reuteri attenuates stressor-induced increases in colonic F4/80⁺ macrophages during *C. rodentium* challenge

Stressor exposure during challenge with *C. rodentium* significantly increased CCL2 mRNA levels in the colons of both vehicle-treated mice ($P < 0.05$; **Figure 2a**) and *L. reuteri*-treated mice ($P < 0.05$; **Figure 2a**). Exposing vehicle-treated mice to SDR increased CCL2 mRNA on Days 6 and 12 post challenge ($P < 0.05$), whereas exposing *L. reuteri*-treated mice to SDR only resulted in increased mRNA on Day 24 post challenge ($P < 0.05$; **Figure 2a**).

Exposing vehicle-treated mice to SDR resulted in significantly increased F4/80 staining across the 24 days post challenge with *C. rodentium* ($P < 0.05$; **Figure 2b and c**), with differences occurring on Day 12 post challenge ($P < 0.05$). Exposing *L. reuteri*-treated mice to SDR also increased F4/80⁺ staining across the 24-day period ($P < 0.05$) with differences between stressed and control mice occurring on Days 12 and 24 ($P < 0.05$; **Figure 2b and c**). Although stressor exposure increased F4/80 staining in both vehicle-treated and

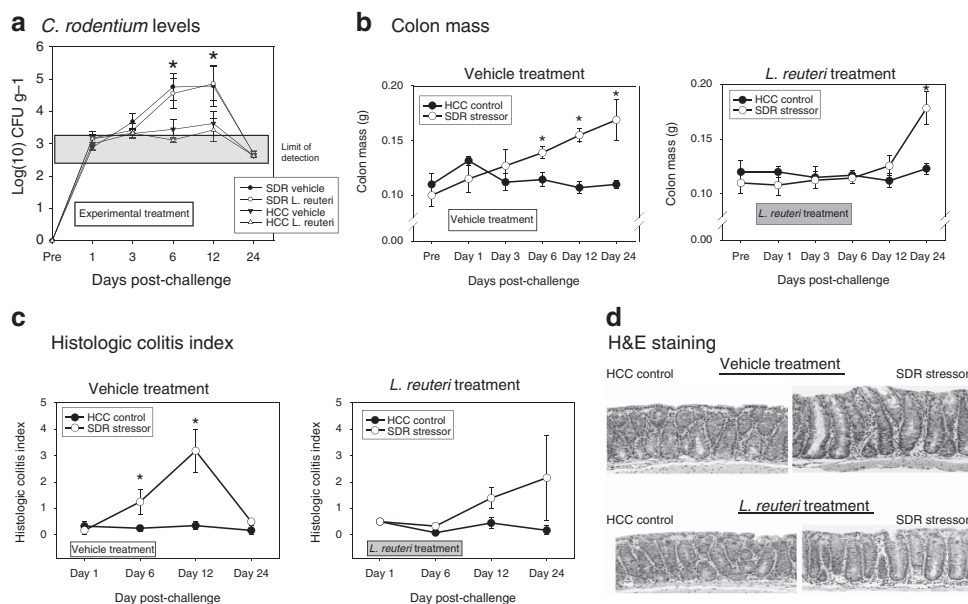


Figure 1 Exposure to the SDR stressor significantly changed *C. rodentium* colonization, pathogen-induced increases in colon mass, and histopathology. Mice were exposed to the SDR stressor during oral challenge with $3\text{--}5 \times 10^6$ colony-forming unit (CFU) of *C. rodentium*. (a) Exposure to the SDR stressor led to increased levels of *C. rodentium* that could be cultured from the stool during the first 24 days post challenge. Treatment with *L. reuteri* did not affect the stressor-induced increase in pathogen challenge. (b) Colon mass was significantly increased in mice exposed to the SDR stressor during oral challenge with *C. rodentium*. This increase did not occur in mice treated with *L. reuteri* until Day 24 post challenge. (c) Colonic histopathology was significantly increased in mice exposed to the SDR stressor during oral challenge with *C. rodentium*. This increase was not evident in mice treated with *L. reuteri*. (d) Representative images of H&E-stained colonic sections (magnification = $20\times$). In all cases, the data are the mean \pm s.e. *indicates $P < 0.05$ vs. non-stressed home cage control (HCC control) mice at the same time point.

L. reuteri-treated mice, overall F4/80 staining was lower in *L. reuteri*-treated mice than it was in vehicle-treated mice ($P < 0.05$; **Figure 2b** and c).

L. reuteri treatment reduces the elevated levels of CD11b⁺Ly6C^{hi}CCR2⁺ cells in the blood and the colonic lamina propria of stressor exposed, *C. rodentium*-challenged mice

To determine whether SDR-exposure increases inflammatory monocyte trafficking to the colon in *C. rodentium*-challenged mice and if probiotic *L. reuteri* was capable of abrogating these changes, CD11b⁺Ly6C^{hi}CCR2⁺ cells were identified in the colonic lamina propria, as well as the blood, via flow cytometry. Stressor exposed, *C. rodentium*-challenged mice had significant increases in the proportion of CD11b⁺ cells that were Ly6C^{hi}CCR2⁺ in the blood at 12 days post infection ($P < 0.05$; **Figure 3a**). This stressor-induced increase in inflammatory monocytes in the blood was not evident in mice treated with probiotic *L. reuteri* (**Figure 3a**). Likewise, SDR enhanced the *C. rodentium*-induced increases in CD11b⁺Ly6C^{hi}CCR2⁺ inflammatory monocytes within the colonic lamina propria on Day 12 post infection ($P < .05$; **Figure 3b** and c); this effect was not evident in mice gavaged with *L. reuteri* (**Figure 3c** and d).

Exposure to SDR during oral challenge with *C. rodentium* increases colonic TNF- α and iNOS: *L. reuteri* reduces the stressor effects

During the 3 weeks post *C. rodentium* challenge, gene expression for both TNF- α ($P < 0.001$; **Figure 4a**) and iNOS ($P < 0.001$;

Figure 4b) were significantly increased in vehicle-treated, SDR-exposed mice. *Post hoc* testing indicated that *C. rodentium*-induced colonic TNF- α and iNOS mRNA levels were significantly higher in SDR-exposed mice on Days 3, 6, and 12 post challenge ($P < 0.05$ for each), but were back to baseline levels by Day 24 post challenge. Although treating mice with *L. reuteri* reduced both TNF- α ($P < 0.05$; **Figure 4a**) and iNOS ($P < 0.01$; **Figure 4b**) expression across the 24 days, *L. reuteri*-treated mice exposed to the SDR stressor still had elevated pathogen-induced TNF- α ($P < 0.01$) and iNOS ($P < 0.01$) when compared with non-stressed controls. But, in this case, differences in TNF- α were due to a significant stressor-induced increase in gene expression on Day 24 post challenge ($P < 0.05$). In *L. reuteri*-treated mice exposed to the SDR stressor, pathogen-induced iNOS expression was elevated on Days 6, 12, and 24 although the mean level of gene expression on Days 6 and 12 was only a twofold increase over non-stressed controls (compared with an approximately fivefold increase in vehicle-treated mice exposed to SDR) (**Figure 4a** and b). Interleukin-1 β was not significantly increased in the stressor-exposed mice treated with vehicle on any day post *C. rodentium* challenge (**Figure 4c**). However, colonic interleukin-1 β mRNA was increased on Day 24 post *C. rodentium* challenge in the mice treated with *L. reuteri* during stressor exposure ($P < 0.05$; **Figure 4c**).

In vitro pretreatment with live *L. reuteri*, or conditioned supernatants, can reduce *C. rodentium*-enhanced gene expression in colonic epithelial cells

Colonic epithelial cell (CMT-93) mRNA expression was determined after a 1 h pretreatment of live *L. reuteri* followed

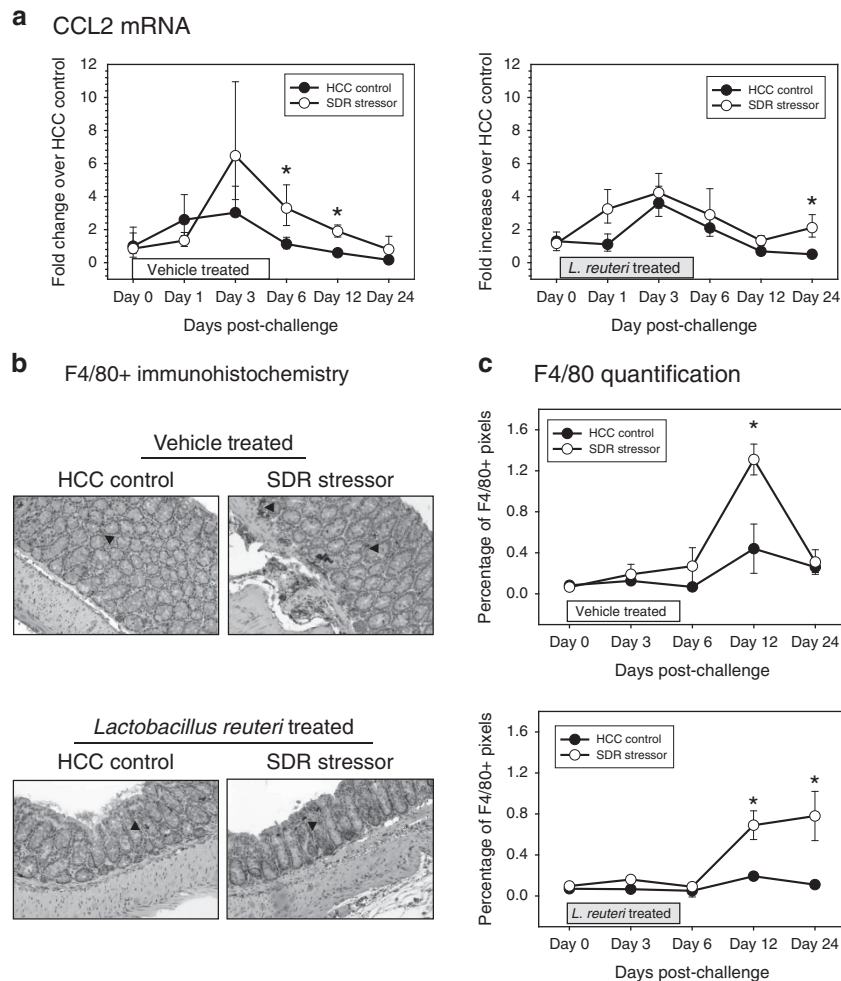


Figure 2 *Lactobacillus reuteri* treatment attenuated the effects of SDR stressor exposure during oral challenge with *C. rodentium* on F4/80-positive cells in the colon. **(a)** mRNA expression for the chemokine CCL2 was significantly increased in mice exposed to the SDR stressor during oral challenge with *C. rodentium*. This increase, however, did not occur in mice treated with *L. reuteri* until Day 24 post challenge. **(b)** Representative images of F4/80⁺ immunoreactivity. Arrows indicate F4/80⁺ cells. Magnification = 20 \times . **(c)** Mice exposed to the SDR stressor during oral challenge with *C. rodentium* had more F4/80 staining in the colon. Although treatment with *L. reuteri* reduced F4/80 staining, mice exposed to the SDR stressor still had more F4/80⁺ cells in the colon than did non-stressed control mice. Data are the mean \pm s.e. *indicates $P < 0.05$ vs. home cage control (HCC control) mice at the same time point.

by a 2 h *C. rodentium* challenge. Epithelial cells treated with live *L. reuteri* alone did not produce a significant amount of CCL2 as compared with vehicle-treated control cells at any concentration tested (data not shown). There was, however, a significant increase in CCL2 mRNA expression after *C. rodentium* challenge ($P < 0.005$) (**Figure 5a**). This *C. rodentium*-induced expression of CCL2 was significantly reduced by pretreatment with live *L. reuteri* at concentrations of 300:1 ($P < 0.005$) and 50:1 ($P < 0.0001$). Live *L. reuteri* treatment caused a threefold increase in TNF- α mRNA expression in CMT-93 cells in only the 300:1 group (data not shown), whereas stimulation with *C. rodentium* caused a 14-fold increase in TNF- α mRNA expression compared with vehicle (VEH)-treated cells ($P < 0.005$). When CMT-93 cells were pretreated with live *L. reuteri* prior to challenge with *C. rodentium*, pathogen-induced TNF- α gene expression was significantly reduced at concentrations of 300:1 ($P < 0.005$) and 50:1 ($P < 0.05$).

Cell-free, pH-adjusted supernatants (5% v/v) from overnight cultures of *L. reuteri* were used to modulate *C. rodentium*-induced gene expression. Conditioned supernatants of *L. reuteri* did not change CMT-93 CCL2 or TNF- α gene expression over that of the vehicle-treated control cells (**Figure 5b**); however, pretreatment with conditioned supernatants were able to significantly reduce both *C. rodentium*-enhanced CCL2 ($P < 0.005$) and TNF- α ($P < 0.005$).

Live *L. reuteri* or conditioned supernatants do not attenuate *C. rodentium*-enhanced gene expression in RAW 264.7 macrophages

Stimulation with either live *L. reuteri* or *C. rodentium* caused a significant increase in CCL2 gene expression ($P < 0.05$, **Figure 5c**). Pretreatment of RAW 264.7 cells with live *L. reuteri* prior to challenge with *C. rodentium* failed to reduce *C. rodentium*-induced CCL2 expression. Similar to

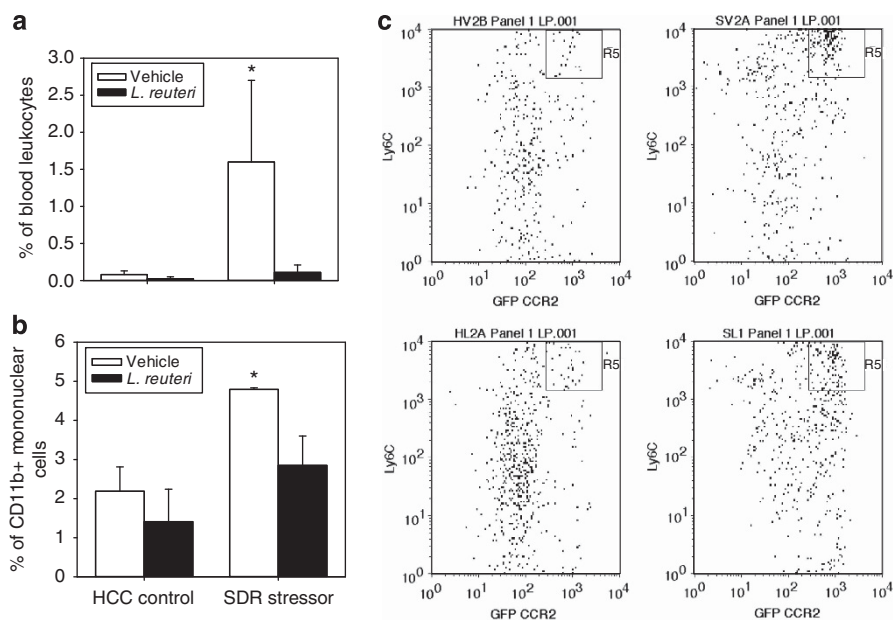


Figure 3 *Lactobacillus reuteri* treatment modulates SDR Stressor-induced increases in inflammatory monocytes in the blood and lamina propria at 12 days post infection with *C. rodentium*. (a) Mice exposed to the SDR Stressor had an increased level of inflammatory monocytes in the blood as compared with home cage control (HCC Control). This was reduced in *L. reuteri*-treated mice. Data are expressed as the mean (\pm s.e.) percentage of blood cells that were CD11b⁺CCR2⁺Ly6C^{hi}. (b) SDR Stressor-exposed mice challenged with *C. rodentium* had significantly higher levels of lamina propria CD11b⁺ cells that were also CCR2⁺Ly6C^{hi} on day 12 post challenge. Treatment with *L. reuteri* prevented the stressor-induced increase in CD11b⁺CCR2⁺Ly6C^{hi} cells in the lamina propria. (c, d) Representative dot plots showing Ly6C and CCR2 staining on cells that were gated based on positive CD11b staining. Representative dot plots from vehicle-treated mice are shown in c, whereas representative dot plots from *L. reuteri*-treated mice are shown in d. * $P < 0.05$ vs. all other groups.

CCL2 expression, TNF- α mRNA expression was significantly enhanced by stimulation with live *L. reuteri* ($P < 0.001$) and *C. rodentium* ($P < 0.001$). There was no change in TNF- α gene expression when *C. rodentium*-challenged macrophages were pretreated with live *L. reuteri*. Treatment with *L. reuteri*-conditioned supernatants alone was enough to significantly enhance CCL2 mRNA expression in RAW 264.7 macrophages to near similar levels as pathogen stimulation ($P < 0.0001$, **Figure 5d**). Pretreatment of macrophages with *L. reuteri*-conditioned supernatants prior to challenge with *C. rodentium* did not reduce CCL2 gene expression as it did in CMT-93 cells. There was a significant increase in TNF- α mRNA gene expression in macrophages treated with *L. reuteri* supernatants only ($P < 0.0001$), however this increase was significantly lower than that of pathogen-induced TNF- α expression. There was no change in *C. rodentium*-induced TNF- α mRNA expression when macrophages were pretreated with conditioned supernatants of *L. reuteri*. Stressor exposed, ccl2-deficient mice have reduced colonic histopathology despite increases in pathogen burden. Both C57BL/6 wild-type (WT) and CCL2-deficient (CCL2^{-/-}) mice were exposed to SDR and challenged with *C. rodentium*. There was a significant increase in *C. rodentium* burden in stressor exposed WT and CCL2^{-/-} mice over their non-stressed counterparts on Day 12 post challenge ($P < 0.05$; **Figure 6a**). Colonic histopathology in *C. rodentium*-challenged mice was significantly increased in SDR-exposed, WT mice on

Day 12 post challenge ($P < 0.05$; **Figure 6b**); this effect was not evident in CCL2^{-/-} mice (**Figure 6b**).

Stressor-enhanced, *C. rodentium*-induced colonic macrophage accumulation is reduced in CCL2^{-/-} mice

The colons of SDR-exposed, WT mice had a significant increase in macrophage accumulation on Day 12 post *C. rodentium* challenge ($P < 0.05$; **Figure 7a**). This stressor-enhanced effect on colonic macrophage accumulation was not apparent in CCL2^{-/-} mice exposed to the SDR stressor during *C. rodentium* challenge (**Figure 7b**).

Stressor-enhanced, *C. rodentium*-induced colonic inflammatory mediator gene expression is negated in CCL2^{-/-} mice

On Day 12 post *C. rodentium* challenge, there was a significant increase in CCL2 mRNA expression in SDR-exposed WT mice ($P < 0.001$; **Figure 8a**). Colonic CCL2 gene expression was not detected in CCL2^{-/-} mice. Colonic TNF- α mRNA expression was also significantly increased on Day 12 post *C. rodentium* challenge in SDR-exposed mice ($P < 0.001$; **Figure 8b**); however, TNF- α mRNA levels were higher in WT mice compared with CCL2^{-/-} mice ($P < 0.005$; **Figure 8b**). Similar to previous data, iNOS mRNA expression was also significantly increased in SDR-exposed WT mice on Day 12 post *C. rodentium* challenge ($P < 0.01$; **Figure 8c**). This stressor-enhanced severity of *C. rodentium*-induced iNOS expression was diminished in CCL2^{-/-} mice (**Figure 8c**).

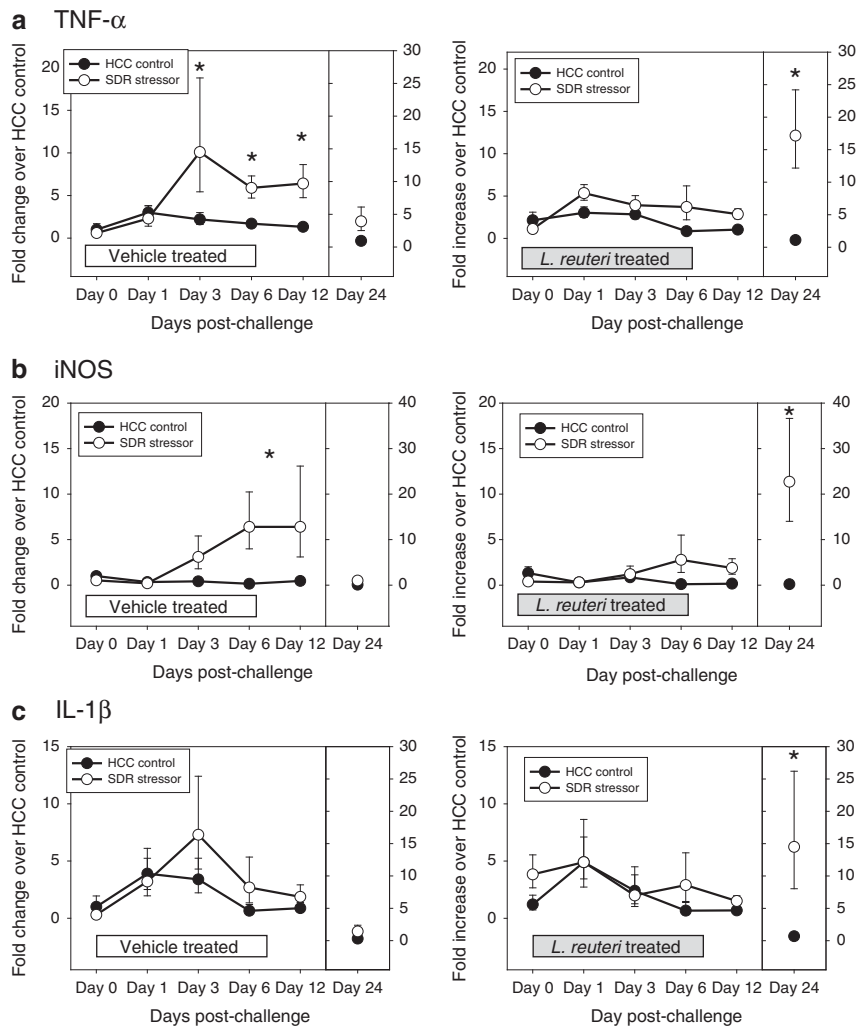


Figure 4 *Lactobacillus reuteri* treatment abrogated the SDR stressor-induced increase in inflammatory cytokine and chemokine mRNA levels in the colon after *C. rodentium* challenge. (a) Exposing mice to the SDR stressor during oral challenge with *C. rodentium* significantly increased TNF- α mRNA levels. Treating mice with *L. reuteri* prevented the increase in TNF- α until Day 24 post challenge. (b) Exposure to the SDR stressor during *C. rodentium* challenge increased iNOS mRNA levels. *L. reuteri* reduced iNOS mRNA, but stressor exposure still resulted in significant increases in iNOS. (c) Exposure to the stressor during *C. rodentium* challenge did not increase IL-1 β mRNA levels in the colon. However, mice treated with *L. reuteri* during exposure to the SDR stressor had elevated levels of IL-1 β on Day 24 post challenge. Data are expressed as a fold increase over uninfected (i.e., Day 0) vehicle-treated home cage control (HCC control) mice and are the mean \pm s.e. *indicates $P < 0.05$ vs. HCC control on each individual day.

Stressor-induced increases in *C. rodentium* translocation are reduced by *L. reuteri*

In vehicle-treated non-stressed control mice, *C. rodentium* was rarely found in the spleen. In fact, across the 24-day experiment, only one of the non-stressed control mice had detectable levels of *C. rodentium* in the spleen (Table 1). In contrast, on Day 6 ($P < 0.05$) and Day 12 ($P < 0.05$) post *C. rodentium* challenge, there were significant increases in the occurrence of *C. rodentium* in the spleens stressor-exposed mice (Table 1). Fifty percent of stressor-exposed mice had detectable levels of *C. rodentium* on Day 6 post challenge, and 62.5% had detectable levels of *C. rodentium* on Day 12 post challenge. As with previous measures, treating mice with *L. reuteri* reduced stressor-enhanced translocation of *C. rodentium* to the spleen with only 33% of stressor-exposed mice having detectable levels on Day 6 and 12.5% having detectable levels on Day 12.

Although stressor exposure increased the likelihood that *C. rodentium* would translocate from the colon and be isolated from the spleen, all mice that were found to have *C. rodentium* in the spleen had similar levels of *C. rodentium* per gram of spleen mass (Table 1).

Stressor-enhanced pathogen translocation to the spleen is diminished in CCL2^{-/-} mice

Stressor-exposed WT mice had a significant increase in spleen mass during *C. rodentium* challenge ($P < 0.05$; Table 2), a phenomenon that was negated in SDR-exposed CCL2^{-/-} mice. The significant increase in spleen mass in SDR-exposed WT mice coincided with a significant increase in the likelihood of detecting *C. rodentium* in the spleen. Stressor exposure failed to increase *C. rodentium* translocation in CCL2^{-/-} mice.

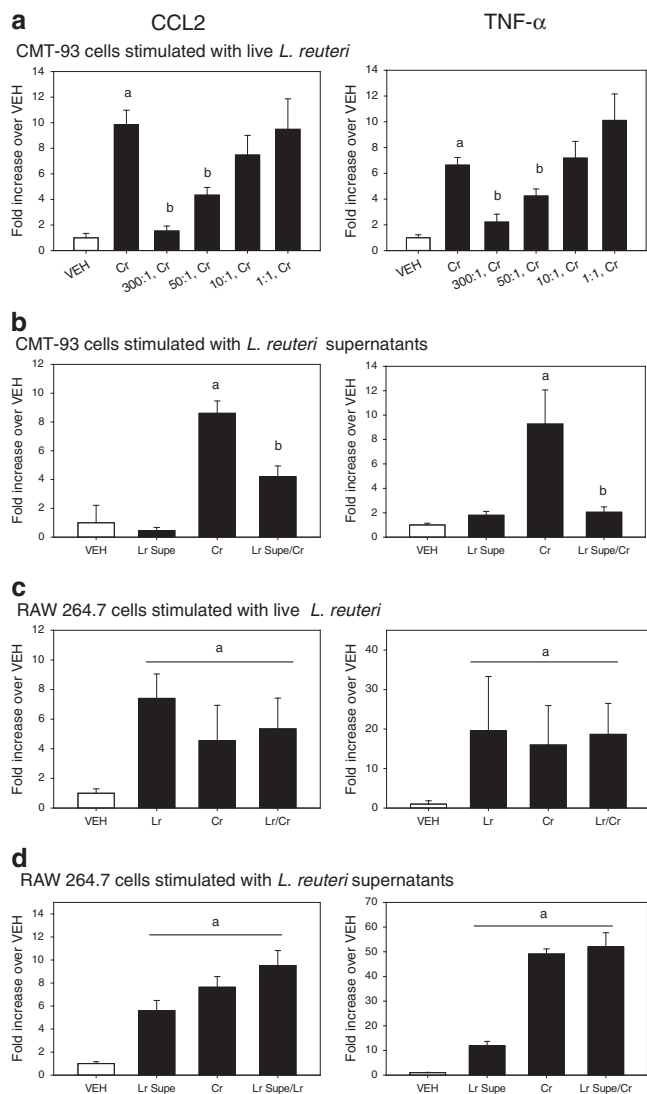


Figure 5 *Citrobacter rodentium*-induced inflammatory mediator gene expression is modulated by pretreatment with live *L. reuteri* or its conditioned supernatants in intestinal epithelial cells, but not macrophages, *in vitro*. The colonic epithelial cell line, CMT-93, or RAW 264.7 macrophages were pretreated with either live, intact *L. reuteri* or pH-adjusted, filter-sterilized *L. reuteri* supernatants for 1 h prior to challenge with *C. rodentium*. At the end of the 2 h pathogen challenge, total RNA was isolated to quantify mRNA expression by real-time PCR. (a) Epithelial CCL2 and TNF- α gene expression was significantly increased by 2 h of *C. rodentium* challenge as compared with vehicle (PBS) control. Pretreatment with live *L. reuteri* significantly reduced *C. rodentium*-induced CCL2 and TNF- α mRNA expression at ratios of 300:1 and 50:1 (*L. reuteri*:CMT-93). a = treatment vs. vehicle (VEH), $P < 0.005$. b = Lr/Cr vs. Cr, $P < 0.05$. (b) Conditioned supernatants from *L. reuteri* significantly reduce CCL2 and TNF- α mRNA expression in CMT-93 epithelial cells. a = treatment vs. VEH, $P < 0.05$. b = Lr/Cr vs. Cr, $P < 0.005$. (c) Live *L. reuteri*, *C. rodentium*, and *L. reuteri* pretreatment prior to pathogen challenge significantly enhances both CCL2 and TNF- α mRNA expression in RAW 264.7 macrophages. a = treatment vs. VEH, $P < 0.05$. (d) Conditioned supernatants also significantly enhance CCL2 and TNF- α mRNA expression in RAW 264.7 macrophages and fail to reduce *C. rodentium*-induced mRNA expression. a = treatment vs. VEH, $P < 0.001$. Lr, *L. reuteri* treatment alone. Cr, *C. rodentium* treatment alone. Lr/Cr, *L. reuteri* pretreatment prior to *C. rodentium* challenge. Lr Supe, cell-free, pH adjusted *L. reuteri* supernatant (5% v/v). $n = 8$ /treatment. Data are the mean \pm standard error.

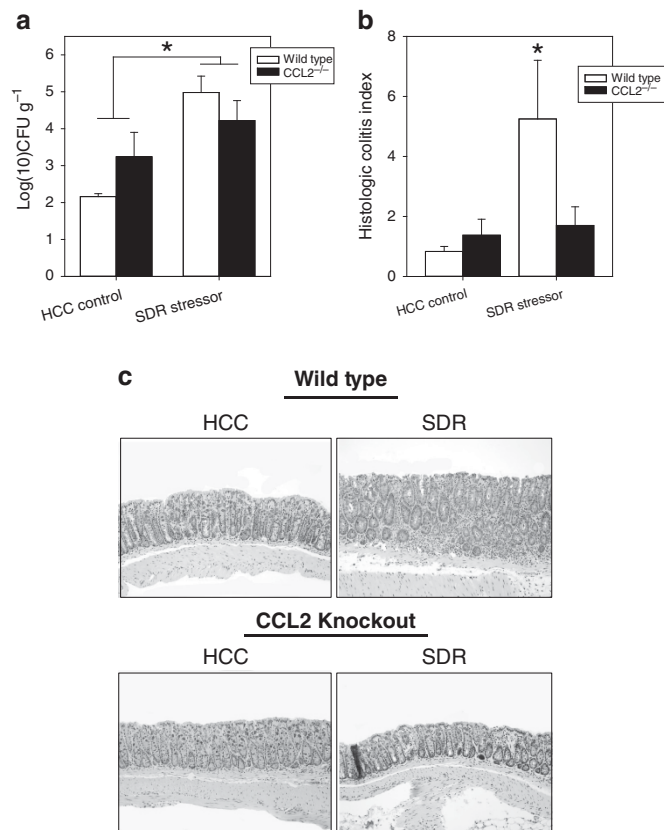


Figure 6 Stressor-enhanced, *C. rodentium*-induced infectious colitis is negated in CCL2^{-/-} mice. Wild-type (WT) and CCL2^{-/-} mice were orally challenged with 3×10^6 colony-forming unit (CFU) of *C. rodentium* during exposure to the SDR stressor. Social disruption continued for 5 days post infection. (a) Exposure to the SDR stressor significantly increased *C. rodentium* colonization in WT and CCL2^{-/-} mice. * $P < 0.05$ home cage control (HCC) vs. SDR. (b) Stressor exposure significantly increased total pathology on Day 12 post challenge. * $P < 0.001$ SDR WT vs. HCC WT. (c) Representative images of H&E-stained colonic sections (magnification = 20 \times). In all cases, the data are the mean \pm s.e.

DISCUSSION

Murine infection with *C. rodentium* results in colonic inflammation that resembles intestinal inflammation found in patients with IBD.^{20,28} In IBD patients, psychological stress may increase symptom flares or cause relapse from remission.²⁹ Despite this realization, the mechanisms by which this occurs, and whether probiotic microbes may ameliorate stressor-induced exacerbation, are not yet known. In our study, infecting mice with a lower dose of *C. rodentium* resulted in low pathogen colonization, and little evidence of colonic inflammation. However, exposing mice to a social stressor significantly increased the colonic inflammatory response to *C. rodentium*, demonstrating the relevance of the model system to the observation that psychosocial stress in humans can increase the severity of IBD.⁹⁻¹¹ The overall histologic colitis index was significantly increased on Days 6 and 12 post challenge in stressor-exposed mice.

Mice, as well as humans, exposed to social stress have an increase in bone marrow-derived Ly6C^{hi}CD11b⁺ monocytes

in circulation.³⁰ Both gene expression profiling and *ex vivo* assays demonstrate that these cells have an increased capacity to produce inflammatory cytokines (e.g., TNF- α) and reactive oxygen and nitrogen intermediates (e.g., iNOS and peroxynitrite) upon stimulation with microbial antigen.^{30,31} During infection, innate immune cells, such as CD11b⁺Ly6C^{hi} inflammatory monocytes are recruited from the bone marrow in part by chemokines, such as CCL2.¹⁵ This chemokine was significantly elevated in the stressor-exposed mice on Days 3, 6, and 12 post *C. rodentium* challenge. Consistent with these data, F4/80⁺ macrophages and CD11b⁺Ly6C^{hi}CCR2⁺ cells were increased in the colon during the first 2 weeks post challenge. This finding is important, because previous studies have shown that newly recruited Ly6C^{hi}CCR2⁺ inflammatory monocytes can differentiate into proinflammatory macrophages, which are the primary producers of TNF- α ,^{16,32} and other mediators, such as iNOS, during *C. rodentium* challenge.³³ It is well recognized that production of TNF- α or reactive nitrogen intermediates (produced as a result of expressing the iNOS enzyme) helps to control microbial pathogen levels in the

colon.^{34,35} However, excessive production results in tissue damage in both experimental colitis and in humans with inflammatory bowel diseases.^{34,35}

The exacerbating effects of stressor exposure on the severity of pathogen-induced colitis were not apparent in CCL2^{-/-} mice. These mice had low levels of F4/80⁺ macrophages in the colon at the peak of *C. rodentium* challenge. In addition, the ability of the stressor to exacerbate TNF- α and iNOS mRNA was prevented in CCL2^{-/-} mice, further demonstrating the importance of CCL2 in stressor-induced exacerbation

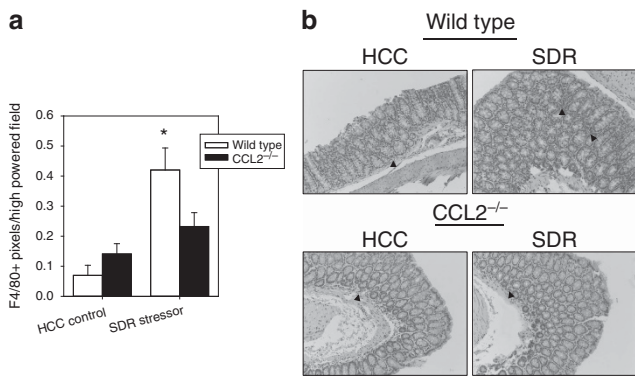


Figure 7 Stressor exposure enhances pathogen-induced colonic macrophage accumulation in wild-type mice. (a) Colons of SDR-exposed WT mice had a significant increase in F4/80⁺ cells on day 12 post challenge. This effect was reduced in CCL2^{-/-}, stressor exposed mice. (b) Representative images of F4/80⁺ immunoreactivity. Arrows indicate F4/80⁺ cells. Magnification = 20 \times . Data are the mean \pm standard error. **P* < 0.05 SDR WT vs. home cage control (HCC) WT.

Table 1 *Citrobacter rodentium* levels in the spleen

	Days post challenge				
	Pre	1	6	12	24
Vehicle treatment					
<i>HCC control</i>					
Pathogen prevalence	0	0	0	12.5% (1/8)	0
Colonization	ND	ND	ND	3.46	ND
<i>SDR stressor</i>					
Pathogen prevalence	0	0	50% (3/6)*	62.5% (5/8)*	0
Colonization	ND	ND	3.68 \pm 0.16 ^a	4.03 \pm 0.44 ^b	ND
<i>L. reuteri</i> treatment					
<i>HCC control</i>					
Pathogen prevalence	0	0	0	12.5% (1/8)	0
Colonization	ND	ND	ND	3.35	ND
<i>SDR stressor</i>					
Pathogen prevalence	0	0	33% (2/6)	12.5% (1/8)	0
Colonization	ND	ND	3.72 \pm 0.42 ^c	3.65	ND

Abbreviations: CFU, colony-forming unit; HCC, home cage control; ND, no detectable colonies. All data are LOG(10) CFU/g spleen mass.

**P* < 0.05 vs. HCC control.

^ais mean \pm s.e. from three mice

^bis mean \pm s.e. from five mice

^cis mean \pm range from two mice.

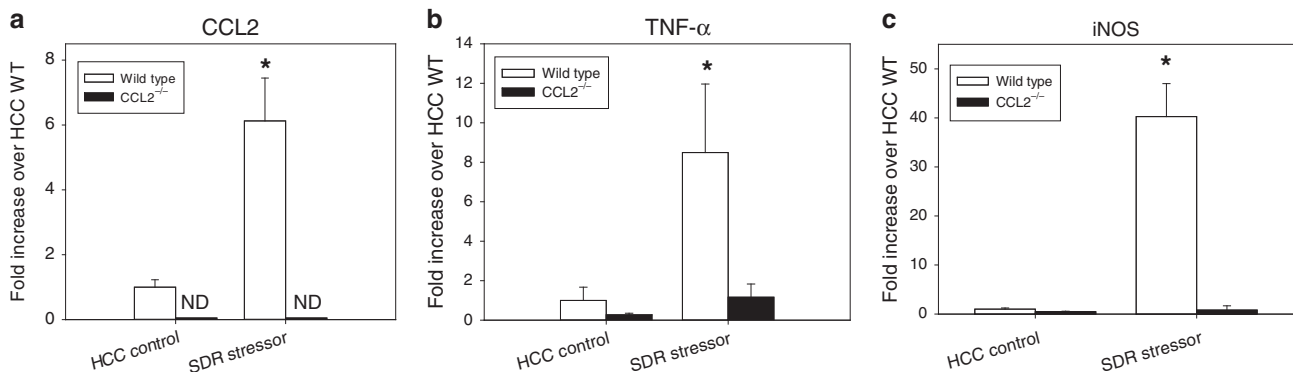


Figure 8 Social disruption enhances *C. rodentium*-induced colonic gene expression in mice with intact CCL2. Stressor exposure significantly increased colonic mRNA expression of (a) CCL2, (b) TNF- α , and (c) iNOS as compared with non-stressed controls on Day 12 post challenge, which was ablated in CCL2^{-/-} mice. ND = not detectable. **P* < 0.01 SDR WT vs. HCC WT. In TNF- α figure, a = home cage control (HCC) vs. SDR, *P* < 0.001. Data are the mean \pm standard error.

Table 2 *Citrobacter rodentium* levels in the spleens of CCL2^{-/-} mice

	Spleen mass (g)	Prevalence (%)	Colonization
<i>Wild-type</i>			
HCC control	0.079 ± 0.006	0 (0/3)	ND
SDR stressor	0.138 ± 0.018*	67 (4/6)*	6133 ± 5800
<i>CCL2-deficient</i>			
HCC control	0.061 ± 0.005	25 (1/4)	150 ± 50
SDR stressor	0.072 ± 0.007	17 (1/6)	100 ± 50

Abbreviations: CFU, colony-forming unit; ND, no detectable colonies. Colonization data are CFU/spleen. **P* < 0.05 vs. HCC control.

of pathogen-induced colitis. The production of CCL2 can be influenced by probiotic microbes, and our data demonstrated that *L. reuteri* (strain ATCC 23272) reduces the ability of murine colonic epithelial cells to produce CCL2. Although other strains of *L. reuteri* are able to reduce cytokine and chemokine production from monocytic cells³⁶ the strain of *L. reuteri* used in the current study was unable to prevent cytokine and chemokine production by RAW 264.7 macrophage cell line or by primary splenic CD11b⁺ monocytes/macrophages (data not shown).

The ability of *L. reuteri* to reduce colonic cytokine and chemokine production was also evident *in vivo*. Administering *L. reuteri* on each day of stressor-exposure significantly reduced the effects of the stressor on the severity of *C. rodentium*-induced colitis. Overall colitis scores were significantly reduced, as were the accumulation of macrophages and the elevated TNF- α and iNOS mRNA. We hypothesize that *L. reuteri*-secreted factors are able to stabilize colonic epithelial cells from overexpressing proinflammatory cytokines and chemokines following stressor-exposure during *C. rodentium* challenge. In previous studies, it was demonstrated that a cocktail of two rat (R2LC and JCM 5869) and two human (ATCC PTA 4659 and ATCC 55730) *L. reuteri* isolates were able to reduce chemically induced colitis via the reduction of P-selectin-associated leukocyte-endothelial cell interactions.³⁷ Thus, it is possible that the reduction of these adhesion molecules, coupled with the reduction of colonic CCL2, contributes to the reduction of stressor-enhanced colonic macrophage accumulation, thereby reducing stressor-exacerbated colitis.

Stressor exposure during *C. rodentium* challenge increased the ability of *C. rodentium* to translocate from the lumen of the intestines to abdominal organs. *C. rodentium* does not possess the pathogenicity factors necessary to invade across epithelial cells.^{38,39} Thus, paracellular permeability of the epithelial barrier must be enhanced for the pathogen to migrate from the colon to the interior of the body. Stressor-exposed mice during *C. rodentium* challenge were more likely to have detectable levels of *C. rodentium* in the spleen, indicating that epithelial permeability had been increased in stressor-exposed mice. Mice treated with *L. reuteri* during exposure to the SDR stressor did not have an increase in *C. rodentium* in the spleen after oral

challenge. Although it has been documented that *L. reuteri* can enhance epithelial barrier integrity even when not reducing cytokine production,^{7,40} it is likely that the increased barrier permeability in stressor-exposed mice was related to colonic inflammation. There was no evidence that stressor exposure enhanced barrier permeability in CCL2^{-/-} mice, suggesting that leukocyte recruitment was involved in the disruption of the epithelial barrier.

The beneficial effects of *L. reuteri* occurred even though *L. reuteri* did not significantly change *C. rodentium* levels in the colon. This is important, because, *L. reuteri* can produce a compound in the presence of glycerol, called reuterin, which kill enteric pathogens *in vitro*.^{41,42} The results of this study indicate that the anti-inflammatory effects of *L. reuteri* are not due to decreases in colonic *C. rodentium* levels. As reuterin production by *L. reuteri* was not induced within our studies we do not currently believe this is the mechanism by which stressor-enhanced infectious colitis is reduced. Rather, the results indicate that *L. reuteri* has a more direct effect on the colonic inflammatory response. Our results are consistent with previous studies indicating that *L. reuteri* attenuates colitis in germ-free mice challenged with the closely related pathogen, enterohemorrhagic *Escherichia coli*, even though pathogen levels were not reduced until 3 weeks post challenge.²⁷

The effects of *L. reuteri* were not permanent. In this study, probiotic *L. reuteri* was only given through Day 5 post challenge (i.e., through the last day of stressor exposure) to test the hypothesis that lactobacilli could prevent stressor effects. However, by Day 24 post challenge, which is 19 days after terminating *L. reuteri* treatment, stressor exposed, *C. rodentium*-challenged mice that were treated with *L. reuteri* had more pathology in the colon than did mice in any other group, including vehicle-treated, stressor-exposed mice. It is not clear why pathology was higher in these mice, but others have demonstrated that probiotic lactobacilli, including *L. reuteri*, do not colonize the host for long periods of time.^{43,44} This may be partly dependent upon host factors, because human isolates of *L. reuteri* (such as the currently used ATCC 23272) do not adhere to murine colonic tissue.⁴⁵ It is possible that rodent lactobacilli isolates that colonize the murine gastrointestinal tract⁴⁶ would persist for longer periods of time and prevent the observed increase in colitis even after probiotic termination. This hypothesis will be tested in future studies.

Stressor exposure is recognized to exacerbate gastrointestinal illnesses, but the mechanisms by which this occurs are not well understood. The use of well-defined animal stressors and pathogen challenge to induce infectious colitis offers a means to begin understanding how stress can impact gastrointestinal illness. When considered together, this study indicates that stressor exposure leads to increased production of CCL2 in the colon, which is needed to recruit inflammatory monocytes from the bone marrow.¹⁵ In the colon, these inflammatory monocytes are prolific producers of inflammatory cytokines and mediators, like TNF- α and iNOS, which are recognized to have both protective and tissue-damaging effects in the colon. This increased production of CCL2 can be reduced by probiotic

L. reuteri, which also prevents stressor-induced exacerbation of the severity of *C. rodentium* colitis. Although it is not clear how *L. reuteri* prevents the effects of stressor exposure on the severity of colonic inflammation, it is interesting to note that stressor exposure reduces commensal *L. reuteri* levels in the colonic mucosa.²⁶ If providing probiotic *L. reuteri* prevents this stressor-induced reduction in commensal lactobacilli, it would suggest that commensal microbes have a role in stressor-induced exacerbation of colonic inflammation, and would provide for a mechanism by which probiotics exert their beneficial effects.

METHODS

Animals. Male C57BL/6 mice, 6–8 week of age, were purchased from Charles River Laboratories (Wilmington, MA). Genetically modified, CCL2-deficient mice (strain name: B6.129S4-Ccl2^{tm1Roi/J}) were obtained from Jackson Laboratories (Bar Harbor, ME) and bred in our facility. CCR2-GFP mice were a gift from Eric Pamer.⁴⁷ All mice were allowed to acclimate for 1 week prior to experimentation. Mice were housed in groups of three per cage and kept on a 12 h light:dark schedule with lights on at 0600. Food and water were available *ad libitum*. Experiments consisted of three mice per group per condition, and data from three replicate experiments were used in the analyses for a final sample size of $n = 9$ per group per time point unless otherwise stated. All experimental procedures were approved by The Ohio State University's Animal Care and Use Committee.

SDR. SDR occurred over a 2-h period between 1630 and 1830. SDR was initiated by placing an aggressive male mouse into the home cage of the resident mice as previously reported.³¹ Agonistic behavior between the aggressor and residents were observed to ensure that the aggressor attacked and defeated all residents. After fighting was initiated, aggressors were left in the cages for 2 h. At the end of the 2 h period, the aggressor was removed and resident mice were left undisturbed until the following day when SDR was repeated. The resident mice were exposed to a total of six, 2-h cycles of SDR.

Infection. *C. rodentium* strain DBS120 (pCRP1::Tn5)⁴⁸ was grown in Lennox LB Broth overnight at 37 °C. Mice were inoculated via oral gavage with 100 μ l of bacteria (i.e., $1\text{--}3 \times 10^6$ CFU) in phosphate-buffered saline, and deprived of food and water for 2 h after challenge. Fecal shedding of *C. rodentium* was determined every 3 days by plating feces from infected mice on MacConkey lactose agar (Becton Dickinson, Franklin Lakes, NJ) supplemented with kanamycin ($40 \mu\text{g ml}^{-1}$). Pathogen levels were also determined in spleen homogenates plated in the same fashion as stool samples.⁷

Probiotic. *L. reuteri* was purchased from the American Type Culture Collection (ATCC 23272) and grown in Difco Lactobacilli MRS Broth (Becton Dickinson) for ~24 h at 37 °C with 5% CO₂. The probiotic was washed with phosphate-buffered saline, adjusted to 1×10^9 CFU ml⁻¹, and 100 μ l was administered to mice via oral gavage (i.e., 1×10^8 CFU). Mice were given the probiotic after each exposure to the SDR stressor. Vehicle-treated mice were dosed orally with phosphate-buffered saline as a control for the daily handling and repeated gavages.

Lamina propria lymphocyte isolation. Colons were extracted from CCR2-GFP mice. Blood was collected for flow cytometry analysis. For colonic tissue, the Lamina Propria Dissociation Kit (Miltenyi-Biotec, San Diego, CA) protocol was followed for lamina propria lymphocyte (LPL) isolation. In brief, tissue was excised, rinsed, cut into 0.5 cm pieces and placed in 20 ml of predigestion solution. Samples were incubated for 20 min at 37 °C with rotation. After rinsing, tissue pieces were placed in the gentleMACS C tube with Lamina Propria Dissociation Enzyme Mix, and placed in the gentleMACS Dissociator (Miltenyi-Biotec). Dissociated cells were centrifuged, filtered, and

resuspended in Rosewell Park Memorial Institute medium/10% fetal bovine serum at 5×10^6 cells ml⁻¹.

Immunohistochemistry. The entire colon was excised and transected longitudinally. One section was used for semiquantitative real-time PCR, with the remaining section formalin fixed in 10% neutral buffered saline. These fixed tissues were processed routinely, paraffin embedded, sectioned at 5 μ m, and stained with hematoxylin and eosin. Sections were scored by a board-certified veterinary pathologist (Dr Nicola Parry) who was blinded to experimental groups. Inflammation, hyperplasia, dysplasia, edema, and epithelial defects within intestinal tissue sections were graded on a scale of 0–4 at 0.5 intervals as described previously.⁴⁹ These scores were summed to provide a colonic histological index that was used for statistical analyses. In addition to hematoxylin and eosin staining, adjacent sections were stained for F4/80⁺ macrophages using published protocols.⁵⁰ Total cell influx was analyzed by digital images of every 5th field of view for the entire length of the colon and quantified using histogram analysis in Adobe Photoshop CS2 software (F4/80⁺ pixelation).⁵⁰

Cell culture. The murine colonic epithelial cell line, CMT-93 (ATCC CCL-223), and murine macrophage cell line, RAW 264.7 (ATCC TIB-71), were used to determine the effects of *L. reuteri* on *C. rodentium*-induced gene transcription. CMT-93 epithelial cells and RAW 264.7 macrophages were cultured separately according to manufacturer's guidelines. Cells were allowed to adhere overnight in 6-well tissue culture treated plates at 1×10^6 cells per well prior to stimulation. To test the ability of *L. reuteri*, or its conditioned supernatant, to modulate *C. rodentium*-induced gene expression, two separate experiments were performed in each cell line. Initially, intact *L. reuteri* was added to either the CMT-93 or RAW 264.7 monolayer at concentrations ranging from 300:1 to 1:1 (*L. reuteri*:cell line) for 1 h prior to *C. rodentium* challenge. Second, conditioned supernatants of *L. reuteri* were pH-adjusted to 7.0, filter-sterilized, and added to cells lines for 1 h prior to challenge at a concentration of 5% (v/v). After the 1 h pre-stimulation, cells were challenged with *C. rodentium* at a concentration of 100:1 of *C. rodentium*:cell line for 2 h. At the end of *C. rodentium* challenge total RNA was harvested for mRNA analysis by semiquantitative real-time PCR.

Semiquantitative real-time PCR. Total RNA was isolated from colonic tissue and *in vitro* cell lines using Trizol reagent as per manufacturer's instructions (Invitrogen, Carlsbad, CA), and RNA was reverse transcribed to make complimentary DNA using a commercially available kit (Promega, Madison, WI). Real-time PCR primers and probes were synthesized by Applied Biosystems (Grand Island, NY) and the 5'–3' sequences are found in **Table 1**. Real-time PCR reactions were performed and analyzed as previously reported.⁶ In all cases, 18S was used as a housekeeping gene, and the relative amount of transcript was determined using the comparative cycle threshold (C_t) method as described by the manufacturer.

Flow cytometry. Whole blood and isolated colonic lamina propria lymphocyte cells from CCR2-GFP mice were stained with Phycoerythrin (PE)-conjugated Ly6C (Clone-AL/21) and APC-conjugated CD11b + (Clone- M1/70) (BD Pharmingen, San Jose, CA) at 4 °C for 45 min. FACS Lysing Solution (BD Pharmingen) was added to the cells after incubation for 10 min, then a single rinse/spin cycle (400 g for 5 min) was performed with fluorescence-activated cell sorting buffer. Samples were analyzed with the BD FACSCalibur dual-laser flow cytometer (BD Immunocytometry Systems, San Jose, CA) with CellQuest Pro. Cells were gated based on forward and side-scatter and CD11b expression and classified based on Ly6C and GFP-CCR2 expression levels.

Statistical analyses. Differences between SDR Stressor and HCC Control mice for all dependent variables were determined using a two-factor analysis of variance with group (i.e., SDR vs. HCC) and days post challenge as the independent factors. To facilitate data interpretation, vehicle-treated mice were assessed independently of *L. reuteri*-treated

mice. Protected *t*-tests using the modified Bonferroni correction factor were used for *post-hoc* analyses. χ^2 -tests were performed on pathogen prevalence in the spleen. For all analyses, the level of statistical significance was set at $P < 0.05$. SPSS for Windows version 19 (SPSS, Chicago, IL) was used for all analyses.

ACKNOWLEDGMENTS

Supported by NIH grant AT006552-01A1 (M.T.B), P30-ES002109 (J.G.F), P30-CA016058, and T32-DE014320.

DISCLOSURE

The authors declare no conflict of interest.

© 2016 Society for Mucosal Immunology

REFERENCES

- Farrell, D. & Savage, E. Symptom burden: a forgotten area of measurement in inflammatory bowel disease. *Int. J. Nurs. Pract.* **18**, 497–500 (2012).
- Sicilia, B., Vicente, R. & Gomollon, F. [Epidemiology of inflammatory bowel disease: controversies in classical epidemiology]. *Acta Gastroenterol. Latinoam.* **39**, 135–145 (2009).
- Sartor, R.B. Microbial influences in inflammatory bowel diseases. *Gastroenterology* **134**, 577–594 (2008).
- Reber, S.O., Obermeier, F., Straub, R.H., Falk, W. & Neumann, I.D. Chronic intermittent psychosocial stress (social defeat/overcrowding) in mice increases the severity of an acute DSS-induced colitis and impairs regeneration. *Endocrinology* **147**, 4968–4976 (2006).
- Savignac, H.M., Hyland, N.P., Dinan, T.G. & Cryan, J.F. The effects of repeated social interaction stress on behavioural and physiological parameters in a stress-sensitive mouse strain. *Behav. Brain Res.* **216**, 576–584 (2011).
- Bailey, M.T., Dowd, S.E., Parry, N.M., Galley, J.D., Schauer, D.B. & Lyte, M. Stressor exposure disrupts commensal microbial populations in the intestines and leads to increased colonization by *Citrobacter rodentium*. *Infect. Immun.* **78**, 1509–1519 (2010).
- Mackos, A.R., Eubank, T.D., Parry, N.M. & Bailey, M.T. Probiotic *Lactobacillus reuteri* attenuates the stressor-enhanced severity of *Citrobacter rodentium* infection. *Infect. Immun.* **81**, 3253–3263 (2013).
- Mackner, L.M. & Crandall, W.V. Psychological factors affecting pediatric inflammatory bowel disease. *Curr. Opin. Pediatr.* **19**, 548–552 (2007).
- Mackner, L.M., Clough-Paabo, E., Pajer, K., Lourie, A. & Crandall, W.V. Psychoneuroimmunologic factors in inflammatory bowel disease. *Inflamm. Bowel Dis.* **17**, 849–857 (2011).
- Sajadinejad, M.S., Asgari, K., Molavi, H., Kalantari, M. & Adibi, P. Psychological issues in inflammatory bowel disease: an overview. *Gastroenterol. Res. Pract.* **2012**, 106502 (2012).
- Mardini, H.E., Kip, K.E. & Wilson, J.W. Crohn's disease: a two-year prospective study of the association between psychological distress and disease activity. *Dig. Dis. Sci.* **49**, 492–497 (2004).
- Mowat, A.M. & Bain, C.C. Mucosal macrophages in intestinal homeostasis and inflammation. *J. Innate Immun.* **3**, 550–564 (2011).
- Sagaert, X., Tousseyn, T., De Hertogh, G. & Geboes, K. Macrophage-related diseases of the gut: a pathologist's perspective. *Virchows Archiv* **460**, 555–567 (2012).
- Bain, C.C. *et al.* Resident and pro-inflammatory macrophages in the colon represent alternative context-dependent fates of the same Ly6Chi monocyte precursors. *Mucosal Immunol.* **6**, 498–510 (2013).
- Serbina, N.V., Shi, C. & Pamer, E.G. Monocyte-mediated immune defense against murine *Listeria monocytogenes* infection. *Adv. Immunol.* **113**, 119–134 (2012).
- Platt, A.M., Bain, C.C., Bordon, Y., Sester, D.P. & Mowat, A.M. An independent subset of TLR expressing CCR2-dependent macrophages promotes colonic inflammation. *J. Immunol.* **184**, 6843–6854 (2010).
- Wohleb, E.S., Powell, N.D., Godbout, J.P. & Sheridan, J.F. Stress-induced recruitment of bone marrow-derived monocytes to the brain promotes anxiety-like behavior. *J. Neurosci.* **33**, 13820–13833 (2013).
- Stark, J.L., Avitsur, R., Padgett, D.A., Campbell, K.A., Beck, F.M. & Sheridan, J.F. Social stress induces glucocorticoid resistance in macrophages. *Am. J. Physiol. Regul. Integr. Comp. Physiol.* **280**, R1799–R1805 (2001).
- Bailey, M.T., Engler, H., Powell, N.D., Padgett, D.A. & Sheridan, J.F. Repeated social defeat increases the bactericidal activity of splenic macrophages through a Toll-like receptor-dependent pathway. *Am. J. Physiol. Regul. Integr. Comp. Physiol.* **293**, R1180–R1190 (2007).
- Mundy, R., MacDonald, T.T., Dougan, G., Frankel, G. & Wiles, S. *Citrobacter rodentium* of mice and man. *Cell Microbiol.* **7**, 1697–1706 (2005).
- Eckmann, L. Animal models of inflammatory bowel disease: lessons from enteric infections. *Ann. NY Acad. Sci.* **1072**, 28–38 (2006).
- Rodrigues, D.M., Sousa, A.J., Johnson-Henry, K.C., Sherman, P.M. & Gareau, M.G. Probiotics are effective for the prevention and treatment of *Citrobacter rodentium*-induced colitis in mice. *J. Infect. Dis.* **206**, 99–109 (2012).
- Bailey, M.T. & Coe, C.L. Maternal separation disrupts the integrity of the intestinal microflora in infant rhesus monkeys. *Dev. Psychobiol.* **35**, 146–155 (1999).
- Bailey, M.T., Lubach, G.R. & Coe, C.L. Prenatal stress alters bacterial colonization of the gut in infant monkeys. *J. Pediatr. Gastroenterol. Nutr.* **38**, 414–421 (2004).
- Bailey, M.T. Psychological stress, immunity, and the effects on the indigenous microflora. In: (Lyte, M. & Freestone, P.P., eds *Microbial Endocrinol.*, pp) 191–212 (Springer, New York, 2010).
- Galley, J.D. *et al.* Exposure to a social stressor disrupts the community structure of the colonic mucosa-associated microbiota. *BMC Microbiol.*, 14–189 (2014).
- Eaton, K.A., Honkala, A., Auchtung, T.A. & Britton, R.A. Probiotic *Lactobacillus reuteri* ameliorates disease due to enterohemorrhagic *Escherichia coli* in germfree mice. *Infect. Immun.* **79**, 185–191 (2011).
- Borenshtein, D., McBee, M.E. & Schauer, D.B. Utility of the *Citrobacter rodentium* infection model in laboratory mice. *Curr. Opin. Gastroenterol.* **24**, 32–37 (2008).
- Bernstein, C.N., Singh, S., Graff, L.A., Walker, J.R., Miller, N. & Cheang, M. A prospective population-based study of triggers of symptomatic flares in IBD. *Am. J. Gastroenterol.* **105**, 1994–2002 (2010).
- Powell, N.D. *et al.* Social stress up-regulates inflammatory gene expression in the leukocyte transcriptome via beta-adrenergic induction of myelopoiesis. *Proc. Natl Acad. Sci. USA* **110**, 16574–16579 (2013).
- Allen, R.G. *et al.* Stressor-induced increase in microbicidal activity of splenic macrophages is dependent upon peroxynitrite production. *Infect. Immun.* **80**, 3429–3437 (2012).
- Zuo, L. *et al.* Targeting delivery of anti-TNF α oligonucleotide into activated colonic macrophages protects against experimental colitis. *Gut* **59**, 470–479 (2010).
- Vallance, B.A., Deng, W., De Grado, M., Chan, C., Jacobson, K. & Finlay, B.B. Modulation of inducible nitric oxide synthase expression by the attaching and effacing bacterial pathogen *Citrobacter rodentium* in infected mice. *Infect. Immun.* **70**, 6424–6435 (2002).
- Goncalves, N.S. *et al.* Critical role for tumor necrosis factor alpha in controlling the number of luminal pathogenic bacteria and immunopathology in infectious colitis. *Infect. Immun.* **69**, 6651–6659 (2001).
- Lebeis, S.L., Sherman, M.A. & Kalman, D. Protective and destructive innate immune responses to enteropathogenic *Escherichia coli* and related A/E pathogens. *Future Microbiol.* **3**, 315–328 (2008).
- Lin, Y.P., Thibodeaux, C.H., Pena, J.A., Ferry, G.D. & Versalovic, J. Probiotic *Lactobacillus reuteri* suppress proinflammatory cytokines via c-Jun. *Inflamm. Bowel Dis.* **14**, 1068–1083 (2008).
- Schreiber, O., Petersson, J., Phillipson, M., Perry, M., Roos, S. & Holm, L. *Lactobacillus reuteri* prevents colitis by reducing P-selectin-associated leukocyte- and platelet-endothelial cell interactions. *Am. J. Physiol. Gastrointest. Liver Physiol.* **296**, G534–G542 (2009).
- Luperchio, S.A. & Schauer, D.B. Molecular pathogenesis of *Citrobacter rodentium* and transmissible murine colonic hyperplasia. *Microbes Infect.* **3**, 333–340 (2001).
- Wiles, S. *et al.* Organ specificity, colonization and clearance dynamics in vivo following oral challenges with the murine pathogen *Citrobacter rodentium*. *Cell Microbiol.* **2004**, 963–972.
- Dicksved, J. *et al.* *Lactobacillus reuteri* maintains a functional mucosal barrier during DSS treatment despite mucus layer dysfunction. *PLoS One* **7**, e46399 (2012).

41. Schaefer, L., Auchtung, T.A., Hermans, K.E., Whitehead, D., Borhan, B. & Britton, R.A. The antimicrobial compound reuterin (3-hydroxypropionaldehyde) induces oxidative stress via interaction with thiol groups. *Microbiology* **156** (Pt 6), 1589–1599 (2010).
42. Spinler, J.K., Taweechoatipatr, M., Rognerud, C.L., Ou, C.N., Tumwasorn, S. & Versalovic, J. Human-derived probiotic *Lactobacillus reuteri* demonstrate antimicrobial activities targeting diverse enteric bacterial pathogens. *Anaerobe* **14**, 166–171 (2008).
43. Preidis, G.A. *et al.* Probiotics stimulate enterocyte migration and microbial diversity in the neonatal mouse intestine. *FASEB J.* **26**, 1960–1969 (2012).
44. Saxami, G., Ypsilantis, P., Sidira, M., Simopoulos, C., Kourkoutas, Y. & Galanis, A. Distinct adhesion of probiotic strain *Lactobacillus casei* ATCC 393 to rat intestinal mucosa. *Anaerobe* **18**, 417–420 (2012).
45. Frese, S.A. *et al.* The evolution of host specialization in the vertebrate gut symbiont *Lactobacillus reuteri*. *PLoS Genet.* **7**, e1001314 (2011).
46. Hoffmann, M. *et al.* *Lactobacillus reuteri* 100-23 transiently activates intestinal epithelial cells of mice that have a complex microbiota during early stages of colonization. *J. Nutr.* **138**, 1684–1691 (2008).
47. Serbina, N.V., Hohl, T.M., Cherny, M. & Pamer, E.G. Selective expansion of the monocytic lineage directed by bacterial infection. *J. Immunol.* **183**, 1900–1910 (2009).
48. Schauer, D.B. & Falkow, S. The *eae* gene of *Citrobacter freundii* biotype 4280 is necessary for colonization in transmissible murine colonic hyperplasia. *Infect. Immun.* **61**, 4654–4661 (1993).
49. Borenshtein, D. *et al.* Decreased expression of colonic Slc26a3 and carbonic anhydrase iv as a cause of fatal infectious diarrhea in mice. *Infect. Immun.* **77**, 3639–3650 (2009).
50. Eubank, T.D. *et al.* Granulocyte macrophage colony-stimulating factor inhibits breast cancer growth and metastasis by invoking an anti-angiogenic program in tumor-educated macrophages. *Cancer Res.* **69**, 2133–2140 (2009).