

## CORRIGENDUM

**The combination of bortezomib, melphalan, dexamethasone and intermittent thalidomide is an effective regimen for relapsed/refractory myeloma and is associated with improvement of abnormal bone metabolism and angiogenesis**

E Terpos, E Kastritis, M Roussou, D Heath, D Christoulas, N Anagnostopoulos, E Eleftherakis-Papaiakovou, K Tsimos, P Croucher and MA Dimopoulos

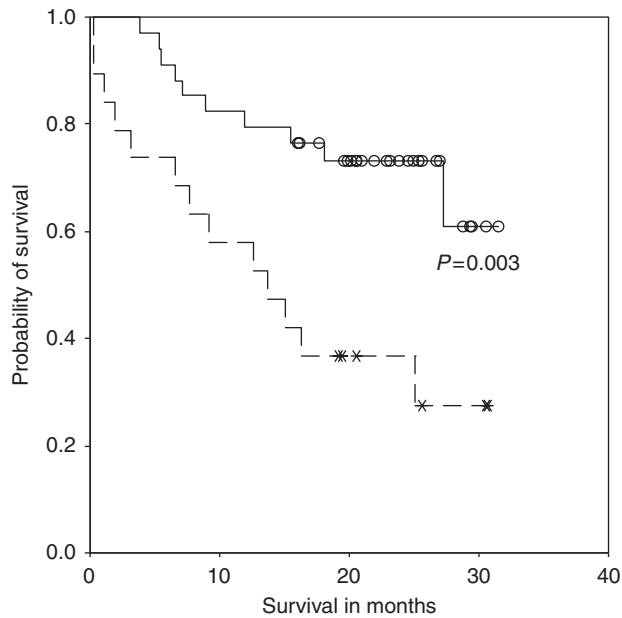
*Leukemia* (2008) **22**, 2292; doi:10.1038/leu.2008.288

**Correction to:** *Leukemia* (2008) **22**, 2247–2256; doi:10.1038/leu.2008.235; published online 4 September 2008

Since the publication of the above article, the authors have identified an error in the legend of Figure 4.

The correct figure and legend are shown here.

The authors apologize for any inconvenience caused.



**Figure 4** Survival according to soluble receptor activator of nuclear factor- $\kappa$ B ligand/osteoprotegerin (sRANKL/OPG ratio; —, above median; —, below median).