

ORIGINAL ARTICLE

Exploitation of interspecific diversity for monocot crop improvement

J King¹, I Armstead², J Harper², L Ramsey³, J Snape⁴, R Waugh³, C James², A Thomas², D Gasior², R Kelly², L Roberts², P Gustafson⁵ and I King¹

In many cultivated crop species there is limited genetic variation available for the development of new higher yielding varieties adapted to climate change and sustainable farming practises. The distant relatives of crop species provide a vast and largely untapped reservoir of genetic variation for a wide range of agronomically important traits that can be exploited by breeders for crop improvement. In this paper, in what we believe to be the largest introgression programme undertaken in the monocots, we describe the transfer of the entire genome of *Festuca pratensis* into *Lolium perenne* in overlapping chromosome segments. The *L. perenne*/*F. pratensis* introgressions were identified and characterised via 131 simple sequence repeats and 1612 SNPs anchored to the rice genome. Comparative analyses were undertaken to determine the syntenic relationship between *L. perenne*/*F. pratensis* and rice, wheat, barley, sorghum and *Brachypodium distachyon*. Analyses comparing recombination frequency and gene distribution indicated that a large proportion of the genes within the genome are located in the proximal regions of chromosomes which undergo low/very low frequencies of recombination. Thus, it is proposed that past breeding efforts to produce improved varieties have centred on the subset of genes located in the distal regions of chromosomes where recombination is highest. The use of alien introgression for crop improvement is important for meeting the challenges of global food supply and the monocots such as the forage grasses and cereals, together with recent technological advances in molecular biology, can help meet these challenges.

Heredity (2013) **110**, 475–483; doi:10.1038/hdy.2012.116; published online 16 January 2013

Keywords: Introgression mapping; comparative mapping; recombination; interspecific diversity; monocots; SNP markers

INTRODUCTION

Global population levels are set to increase from 6 to 9 billion by 2050 with the result that we need to increase food production by 70% just to maintain our present nutrition levels, which already includes one billion severely malnourished and a further 100 million at near starvation level (Gustafson *et al.*, 2010). It takes 7–10 years to breed a new forage grass or wheat variety, that is, the crosses that will lead to the development of varieties in 2020 have already been made. Furthermore, although we need to increase yield in many countries, food production has levelled out either due to climate change, for example, increased temperature, etc, or, in crops such as wheat, a lack of sufficient genetic variation, thus limiting the ability of breeders to develop higher yielding plant varieties. The identification and exploitation of genetic variation for the development of superior high yielding varieties adapted to the changing environment is therefore of critical importance to meet the challenges of global food security.

The transfer of genetic variation from the near and distant relatives of our key crop species, so called alien introgression, provides a vast and virtually untapped reservoir of genetic variation for agronomically important traits that can be utilised by plant breeders for the development of superior high yielding adapted crops. In the monocots, alien introgression has already had a significant impact on

agricultural production. Examples of previous introgressions from alien species in the forage grasses includes genes that confer resistance to disease and tolerance to abiotic stress, etc. (for example, Roderick *et al.*, 2003; Humphreys *et al.*, 2005; Armstead *et al.*, 2006b). In addition, hybrids between the world's major temperate forage grass *Lolium perenne* (high yielding, highly digestible) and *Festuca* species (low digestibility, but highly tolerant to abiotic and biotic stresses) such as *Festuca pratensis* are being directly exploited commercially. In wheat, examples of key introgressions include those from *Aegilops umbellulata* (which saved US wheat production from catastrophic failure in 1960; Sears, 1956, 1972); resistance to a range of diseases, tolerance to acid soils, increased yield advantage and stability from rye (in the late 90s a 1B/1R translocation was present in the majority of world wheat varieties and a number of the present global top varieties, for example, 'Rialto', still carry it; Ammar *et al.*, 2004); a gene from *Ae. ventricosa* conferring resistance to eyespot has been exploited in breeding programmes (Garcia-Olmedo *et al.*, 1977); many of the top wheat varieties in Europe, for example, 'Robigus', are derived from unknown introgressions from *Triticum dicoccoides*; 30% of all wheat varieties produced at International Maize and Wheat Improvement Center are derived from crosses between normal wheat and 'synthetic' wheat (synthetic wheat is derived from crosses between

¹Division of Plant and Crop Sciences, School of Biosciences, The University of Nottingham, Sutton Bonington Campus, Loughborough, UK; ²The Institute of Biological, Environmental and Rural Science, Aberystwyth University, Gogerddan, Aberystwyth, UK; ³The James Hutton Institute, Invergowrie, Dundee, UK; ⁴John Innes Centre, Norwich Research Park, Colney, Norwich, UK and ⁵Department of Agronomy, University of Missouri, Columbia, MO, USA
Correspondence: Dr J King, Division of Plant and Crop Sciences, School of Biosciences, The University of Nottingham, Sutton Bonington Campus, Loughborough LE12 5RD, UK.
E-mail: j.king@nottingham.ac.uk

Received 18 May 2012; revised 14 September 2012; accepted 15 November 2012; published online 16 January 2013

Ae. squarrosa, DD genome, and tetraploid wheat, AABB genomes followed by chromosome doubling via colchicine; Dreisigacker *et al.*, 2008).

Alien introgression, in its simplest form, involves the sexual hybridisation of different species to form an inter-specific F1 hybrid. Alien introgression occurs in the F1 hybrid (or its derivatives) when related, that is, homoeologous, chromosomes from the two parental species (that is, chromosomes that carry orthologous genes in essentially the same order) recombine at meiosis resulting in the generation of inter-specific recombinant chromosomes. These recombinant chromosomes are then transmitted to the next generation through the gametes. The repeated backcrossing of the F1 hybrid, or its derived amphiploid, to one of the parental genotypes results in the generation of lines which carry the majority of the genome of one species but also carry one or more chromosome segments from the other parental species.

Although the value of genetic variation from alien species has been clearly demonstrated, only a fraction of their full potential in breeding has so far been exploited in breeding programmes. In the past, this has been as a direct result of the lack of robust high throughput screening procedures that enable the rapid identification and characterisation of introgressed chromosome segments. However, recent advances in conventional and next generation sequencing platforms and technology in combination with the sequencing of the crop and model plant genomes, for example, rice and Brachypodium (Febrer *et al.*, 2010), are now enabling the development of strategies to fully exploit the potential of alien species for crop improvement, for example, (Griffiths *et al.*, 2006).

The forage grasses are one example where modern technology is being exploited to introgress interspecific genetic variation into an important crop species, that is, the *L. perenne*/*F. pratensis* introgression system (King *et al.*, 1998, 1999, 2002a,b; Moore *et al.*, 2005; Armstead *et al.*, 2006a,b; King *et al.*, 2007; Armstead *et al.*, 2007a; Harper *et al.*, 2011). The Lolium/Festuca introgression system is based on a series of seven monosomic substitution lines. In each of these seven lines one of the chromosomes of *L. perenne* ($2n = 2x = 14$; DNA content = 2034 Mbp; Bennett and Smith, 1976), has been replaced by its equivalent (homoeologous) chromosome from *F. pratensis* ($2n = 2x = 14$; DNA content = 2181 Mbp; Bennett *et al.*, 1982). The monosomic substitution line carrying *F. pratensis* chromosome 3 was selected and backcrossed to the normal *L. perenne* parental genotype. Recombination occurred between *F. pratensis* chromosome 3 and its *L. perenne* group 3 homoeologous partner during meiosis in the monosomic substitution. The resulting progeny from the cross therefore carried a range of different size *F. pratensis* chromosome 3 segments. The *F. pratensis* chromosome segments in each of the progeny were then identified and characterised using genetic markers and genomic *in situ* hybridisation. Thus, as a result a series of lines carrying overlapping *F. pratensis* chromosome segments were developed for *F. pratensis* chromosome 3, that is, an introgression series (King *et al.*, 2007). Further characterisation of the *L. perenne*/*F. pratensis* introgressions was achieved via the bin mapping of sequences derived from functionally annotated gene models on circa every 5th–10th BAC/PAC clone (BP) from rice chromosome 1 minimum tiling path (MTP), that is, thus providing a means of establishing the syntenic relationship between *L. perenne*/*F. pratensis* chromosome 3 and the sequenced rice chromosome 1 pseudomolecule (PM).

In this paper, we describe the exploitation of genomic strategies to transfer the entire genome of *F. pratensis* into *L. perenne* in overlapping segments. In addition, we describe the relationship between

recombination frequency throughout the genome relative to gene content and describe the relationship between key monocot relatives and *L. perenne* and *F. pratensis*. The availability of these genetic stocks and their relationship to other species has major implications for food production and security in the monocots.

MATERIALS AND METHODS

Plant material

Seven *L. perenne*/*F. pratensis* monosomic substitution lines were developed with *L. perenne* as the recipient and *F. pratensis* as the donor (as previously described in King *et al.*, 2002a,b; King *et al.*, 2007; Harper *et al.*, 2011). Thus, each monosomic substitution was diploid carrying 13 *L. perenne* chromosomes and 1 *F. pratensis* chromosome (each substitution line containing a *F. pratensis* chromosome from a different linkage group). Each substitution line was backcrossed (as both the male and female parent) to the diploid *L. perenne* parent to produce BC₂ mapping populations (King *et al.*, 2002a,b; King *et al.*, 2007). During meiosis in the monosomic substitution lines recombination occurs between the *F. pratensis* chromosome and its *L. perenne* homoeologue. As a result of this homoeologous recombination, a proportion of individuals making up the seven BC₂ mapping populations were expected to carry *L. perenne*/*F. pratensis* recombinant chromosomes, (the size and position of the *F. pratensis* chromosome segment in each BC₂ individual being determined by the site of homoeologous recombination at meiosis in the gametes of the monosomic substitution).

Development of introgression maps

The BC₂ populations were genetically mapped using simple sequence repeats generated by Vialactia Biosciences, Auckland, New Zealand (Gill *et al.*, 2006), the Institute of Grassland and Environmental Research (King *et al.*, 2008) and those available in the public domain. The genetic profiles of each of the substitution lines were used to select recombinant genotypes where recombination between *L. perenne* and the *F. pratensis* had occurred at different locations along the chromosomes. Mitotic root tip preparations of the selected genotypes were then analysed using genomic *in situ* hybridisation and the *F. pratensis* segments measured as in King *et al.* (2002a) except slides were analysed using a Leica DM5500B epifluorescence microscope (Leica Microsystems (UK) Ltd, Milton Keynes, UK), photographs were taken using a Leica DFC 350FX digital camera (Leica Microsystems (UK) Ltd) and images analysed and measured using the ImageJ package (<http://rsbweb.nih.gov/ij/>). The measured Festuca segments were used to produce introgression maps of all seven Festuca linkage groups (Figure 1) as described in King *et al.* (2002a).

DNA extraction, PCR and purification

Genomic DNA was extracted using an AutoGen 740 (AutoGen, Holliston, MA, USA).

All PCR amplifications carried out in this work were performed using Faststart TAQ DNA polymerase and the manufacturer's buffer system (Roche, Lewes, UK) in ABI9700 thermocyclers (Applied Biosystems, Warrington, UK). Thermo cycling was performed beginning with 5 min at 96 °C; followed by 10 cycles of 1 min at 95 °C, 1 min at 60 °C (with the temperature reduced by 0.5 °C per cycle), 3 min at 72 °C; followed by 30 cycles of 1 min at 95 °C, 1 min at 55 °C and 3 min at 72 °C; and a final extension step of 7 min at 72 °C. For a small number of primers the initial annealing temperature was either raised to 65 °C (dropping to 60 °C over the course of the first 10 cycles) or dropped to 55 °C (dropping to 50 °C over the course of the first 10 cycles).

DNA was purified either directly from the PCR amplification using the QIAquick PCR Purification Kit (Qiagen, Crawley, UK) or from an agarose gel using the QIAquick Gel Extraction Kit (Qiagen).

Single nucleotide polymorphism marker (SNP) development

Primers were developed from conserved orthologous gene sequences of rice. Primers were designed using the Primer 3 software (<http://primer3.sourceforge.net>) following the strategies outlined in; (King *et al.*, 2007) and incorporating Festuca expressed sequence tag sequences available in public databases. The latter were used in BLAST searches against rice coding sequences to identify potential high confidence orthologs between Lolium/Festuca and rice.

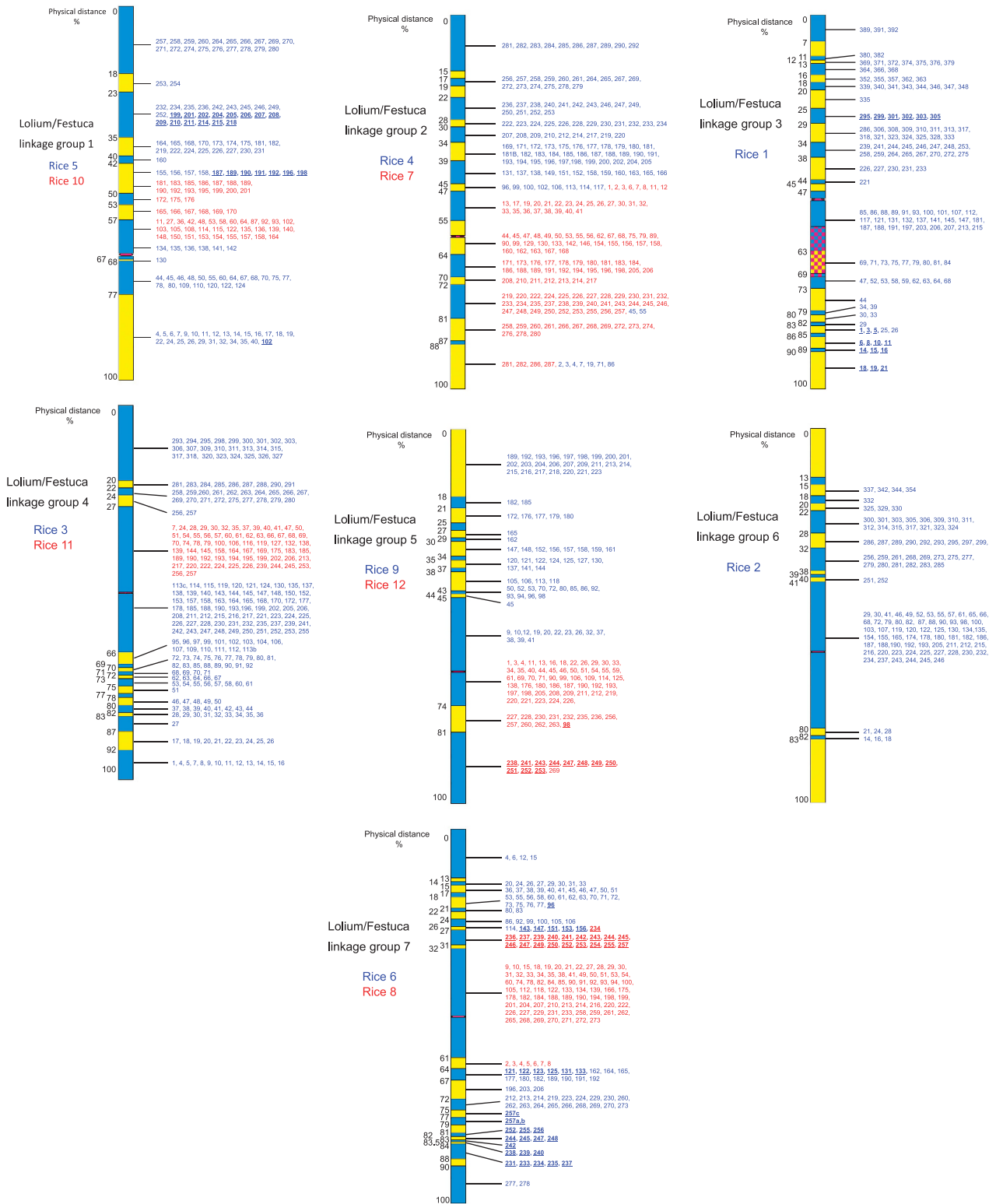


Figure 1 Introgression maps of *L. perenne*/*F. pratensis* linkage groups 1–7. Physical distances are shown on the left. Alternating blue and yellow colours are used to show the points of recombination between *Lolium* and *Festuca* delineating the physical bins. Centromeres are drawn in red. Bin allocation of rice BPs is shown on the right of each diagram (GenBank accession numbers for each clone can be found in Supplementary Data). Where two rice PMs map to one *Lolium*/*Festuca* linkage group the BPs from the different rice groups are shown in red or blue. BPs in bold and underlined map out of order as compared with rice. The chequered area on linkage group 3 represents the NOR (King *et al.*, 2002a).

All primers were initially tested by the PCR amplification of genomic DNA from the plants involved in the production of the monosomic substitution lines (*F. pratensis*, *L. perenne*-diploid, *L. perenne*-tetraploid, *F. pratensis*/*L. perenne*/*L. perenne* triploid) and the monosomic substitution lines themselves with the amplification products run on a 1% agarose gel. The amplified bands were cut from the gel, cleaned and sequenced using an ABI 3100 (Applied Biosystems). The sequences obtained were aligned using Genedoc (<http://www.psc.edu/biomed/genedoc>). The aligned sequences were then characterised for polymorphisms between the parental *F. pratensis* genotype and the two *L. perenne* genotypes. The presence of SNP markers between *Festuca* and *Lolium* were confirmed by their presence in the sequences of the triploid hybrid and the relevant substitution line. Primers flanking SNPs distinguishing the *Lolium* and *Festuca* backgrounds on different linkage groups were used to assign the SNP markers to a bin on the relevant linkage group (Figure 1).

The BPs on each rice PM were numbered 1 to x according to the MTP from the MSU Rice Genome Annotation Project at the start of the project, that is, April 2007. This numbering is used in all figures. Supplementary Information Supplementary Table 1–12 give the GenBank accession number for each BP, the locus identifier of the functionally annotated gene model used and full primer details.

Introgression mapping of SNPs

Having established the presence of a SNP between *F. pratensis* and *L. perenne* in any specific substitution line, the primers were used to amplify the genomic DNA of the derived BC₂ genotypes. Screening for the presence or absence of these SNPs in the BC₂ genotypes allowed each SNP to be assigned to a bin on the appropriate introgression map. The sequence data from *F. pratensis* was BLASTN searched back against the rice genome to confirm that the products were orthologous to the original sequence obtained from rice.

Determination of the distribution of recombination frequency throughout the genome relative to gene content

In order to determine the relationship between physical distance (as determined via introgression mapping) and genetic distance, bin mapped SNPs were used to genetically map a *L. perenne* × *L. perenne* mapping population. The F₂ mapping population used was derived from a cross between the varieties Perma and Aurora which has already been extensively mapped with a variety of other genetic markers, for example, restriction fragment length polymorphisms (RFLPs), simple sequence repeats, etc. (Turner *et al.*, 2006). The selection of primer pairs from the bin mapped SNPs for use in the genetic mapping was achieved as follows. Primer pairs of each bin mapped SNP were used to generate amplicons using pooled DNA from 96 genotypes of the F₂ mapping family. Where sequencing of these amplicons identified potential SNPs, the surrounding sequence was used for primer design for the KASPar SNP genotyping platform (KBioscience, unit 7 Maple Park, Hoddesdon, Herts, England; <http://www.kbioscience.co.uk>); 96 genotypes from the F₂ mapping family were subsequently scored for segregation of SNP markers. (The genetic mapping data for the bin mapped SNPs segregating in the Aurora × Perma *L. perenne* × *L. perenne* mapping population is available in Supplementary Table 13 of the Supplementary Information.)

Comparative mapping

For the comparisons with rice, *Brachypodium distachyon* and *Sorghum bicolor*, where *L. perenne*/*F. pratensis* sequences had been generated for mapped markers in this study (for example, the SNP markers) or were already published (many restriction fragment length polymorphism markers), these sequences were aligned with the complete PM assemblies for rice (Rice Genome Annotation Project; <http://rice.plantbiology.msu.edu/>; version_6.1; all.con.gz), *Brachypodium distachyon* (Phytozome; <http://www.phytozome.net/>, *B.distachyon_114.fa*) and *Sorghum* (Phytozome; *S.bicolor_79.fa*) using BLAST-generated sequence alignments (cut-off threshold $e = <1e-005$). In each case, only the most significant BLAST alignment was used to assign putative orthology between the *L. perenne*/*F. pratensis* marker sequences and the PM sequences for rice, *Brachypodium* and *Sorghum*. The comparative relationships were described as plots of the genetic positions (cM) of sequenced

markers on the *L. perenne*/*F. pratensis* linkage groups against the physical positions (bp) of the putative orthologues on the rice, *Brachypodium* and *Sorghum* PMs. In all cases, the genetic and physical positions were expressed as percentages of the total genetic distance of the linkage group or the complete PM length.

For the comparisons with barley and wheat, wheat expressed sequence tag and bin map positions were obtained from GrainGenes (http://wheat.pw.usda.gov/cgi-bin/westsqll/map_locus.cgi) and barley sequence and genetic map information was obtained from (Close *et al.* 2009). The comparative relationships were described in terms of the introgression (*L. perenne*/*F. pratensis*), genetic (*L. perenne* and barley) or deletion bin (wheat) positions on each chromosome of mapped, sequenced, markers relative to the position (bp) of each marker's most significant BLAST alignment on the rice PMs.

RESULTS

Introgression map development

131 polymorphic simple sequence repeats were used to screen the seven BC₂ populations derived by inter-crossing the seven monosomic substitutions with the diploid *L. perenne* parent. In total, 2784 BC₂ individuals were screened, that is, 204, 218, 126, 548, 188, 1335 and 165 from monosomic substitution lines 1, 2, 3, 4, 5, 6 and 7, respectively (this does not include the BC₂ plants used to generate the initial introgression map for *L. perenne*/*F. pratensis* linkage group 3 (King *et al.*, 2007)). Cytogenetic analysis enabled introgression maps to be generated for the remaining six linkage groups, that is, linkage groups 1, 2, 4, 5, 6 and 7, which were divided into 12 (11 BC₂ genotypes), 18 (16 BC₂ genotypes), 19 (18 BC₂ genotypes), 16 (15 BC₂ genotypes), 15 (14 BC₂ genotypes) and 27 bins (25 BC₂ genotypes), respectively. The previously published introgression map of linkage group 3 (King *et al.*, 2002a, 2007) was increased in resolution from 18–26 bins (using a total of 22 BC₂ genotypes) (Figure 1).

SNP development and bin mapping

Four thousand three hundred and thirty three new primer pairs were designed and tested for the production of amplification products from all three parental genotypes (primers designed and tested for the initial introgression mapping of *L. perenne*/*F. pratensis* linkage group 3 (King *et al.*, 2007) are not included). The frequency of successful amplification varied slightly between rice PMs but, in all cases, at least 90% (usually greater than 95%) could be taken forward to the sequencing stage (Table 1). Thirty five per cent of the primers designed were successful in mapping a SNP to a bin on the introgression maps. However, the success rate varied depending on the rice PM origin of the target sequences (rice PMs 1–12 gave success rates of 28%, 31%, 45%, 38%, 39%, 35%, 42%, 35%, 32%, 26%, 31% and 33%, respectively). Hence, the lowest success rate was with the primers designed from PM 10 (26%) and the highest success rate was with primers designed from PM 3 (45%) (Table 1). Rice PM 1 showed a relatively low level of success (28%). This could be directly attributed to the difficulty in designing primers which spanned *Lolium*/*Festuca* polymorphisms from two specific regions of this PM. Between BACs 108 and 191 on rice PM 1, 27 pairs of primers were designed of which only three were successful in bin mapping a SNP; a success rate of 11%. In a second region (between BACs 275 and 301) 25 pairs of primers were designed, of which again, only three were successful; a success rate of 12%. Although the success rate of mapping a SNP marker to a bin was lowest with primers designed from rice PM 10, the lowest percentage of BPs represented on the bin maps were from rice PMs 10 (27% of total BPs mapped), 11 (27% of total BPs mapped) and 12 (29% of total BPs mapped) (Table 1). This result is consistent with our previously published results on heat maps between *Lolium*/*Festuca* and rice (Armstead *et al.*, 2007b) which

showed a lower level of synteny between rice PMs 10, 11 and 12 and Lolium/Festuca.

Over the course of the programme, a number of the primers were tested in other systems, for example, *Lolium temulentum*/*Festuca pratensis* hybrids, *Lolium multiflorum*/*Festuca glaucescens* hybrids, bread wheat (*Triticum aestivum*) and some wheat wild relatives including *Thinopyrum bessarabicum*, *Aegilops* sp., *Triticum urartu*, rye (*Secale cereale*), etc. In the other grass hybrids, generally over 90% of the primers tested, produced amplification products and in *L. temulentum*/*F. pratensis* hybrids 95% gave SNP polymorphisms. In wheat and its wild relatives 75% and 63%, respectively, of the primers tested produced amplification products. Circa 45% of the primers tested identified polymorphisms between *T. aestivum* and the wild species with which it was being compared (data not shown).

Table 1 The number of primers designed from sequences from each of the rice linkage groups and their success rate in amplifying products in all the parental genotypes, bin mapping SNPs and bin mapping individual rice BPs on the seven Lolium/Festuca introgression maps

Rice linkage group	Number of primers designed	Number of primers giving amplification products (%)	Number of SNPs mapped (%)	Number of BACs mapped (% total BACs mapped)
1	314	307 (98)	87 (28)	76 (19)
2	426	398 (94)	131 (31)	119 (33)
3	603	590 (98)	274 (45)	221 (68)
4	407	397 (98)	156 (38)	123 (42)
5	364	357 (98)	140 (39)	127 (44)
6	377	338 (90)	131 (35)	109 (39)
7	373	366 (98)	155 (42)	141 (49)
8	341	331 (97)	120 (35)	105 (38)
9	296	282 (95)	94 (32)	83 (37)
10	239	230 (96)	63 (26)	55 (27)
11	273	264 (97)	85 (31)	69 (27)
12	320	318 (99)	107 (33)	79 (29)

Abbreviations: BACs, bacterial artificial chromosome; SNPs, single-nucleotide polymorphisms. (The numbers shown for rice PM 1 do not include primers and mapped SNPs already published—King *et al.*, 2007).

One thousand six hundred and twelve SNPs were bin mapped on the seven *L. perenne*/*F. pratensis* introgression lines derived from 1376 BPs from the rice MTP (Figure 1). Table 1 shows the rice-anchored markers which map to each *L. perenne*/*F. pratensis* linkage group. Only *L. perenne*/*F. pratensis* linkage groups 3 and 6 were mapped with SNPs anchored to just one rice PM (PMs 1 and 2, respectively). All other *L. perenne*/*F. pratensis* linkage groups were mapped with SNPs anchored to two rice PMs. Where SNPs anchored to two different rice PMs were bin mapped to the same *L. perenne*/*F. pratensis* linkage group, it was common to find the SNPs anchored to one of the rice PMs inserted into the middle of the SNPs anchored to the other rice PM. The exception to this is Lolium/Festuca linkage group 5 where one end is syntenic to rice PM 9 and the other end to rice PM 12.

Comparative relationship between the forage grasses and rice

The data obtained enabled the determination of the macro-syntenic relationships between the rice PMs and the *L. perenne*/*F. pratensis* genomes. It should be noted that bin mapping only places a gene from a BP within a bin; the relative order within each bin is derived according to the BP order in the rice MTP for that rice PM (Figure 1). For simplicity, the order and identity of orthologous genes from rice, which have been mapped into Lolium/Festuca bins is described in terms of the BP order in the MTP; that is, BP 1, a rice gene(s) present on the first BP in the MTP for that rice PM.

The results show that five of the Lolium/Festuca linkage groups are composed of regions syntenic to two rice PMs (thus accommodating the difference in the number of linkage groups between the two species while maintaining a high level of synteny at the macro level). In the four cases, one rice PM has been translocated into another rice PM, that is, *L. perenne*/*F. pratensis* linkage groups 1, 2, 4, 7, and in a further case one rice PM has been translocated on to the end of another linkage group, that is, *L. perenne*/*F. pratensis* linkage group 5 (Figures 1 and 2).

The bin map order of genes on *L. perenne*/*F. pratensis* linkage groups 4 and 6 was consistent with the order of their orthologues on the rice PMs that is, there were no obvious chromosomal inversions at this level of resolution. In contrast, when compared with their order on the syntenic rice PMs, the bin map order of genes on the introgression maps of *L. perenne*/*F. pratensis* linkage groups 1, 2, 3, 5 and 7 showed at least one disruption in macro-colinearity (Figure 1).

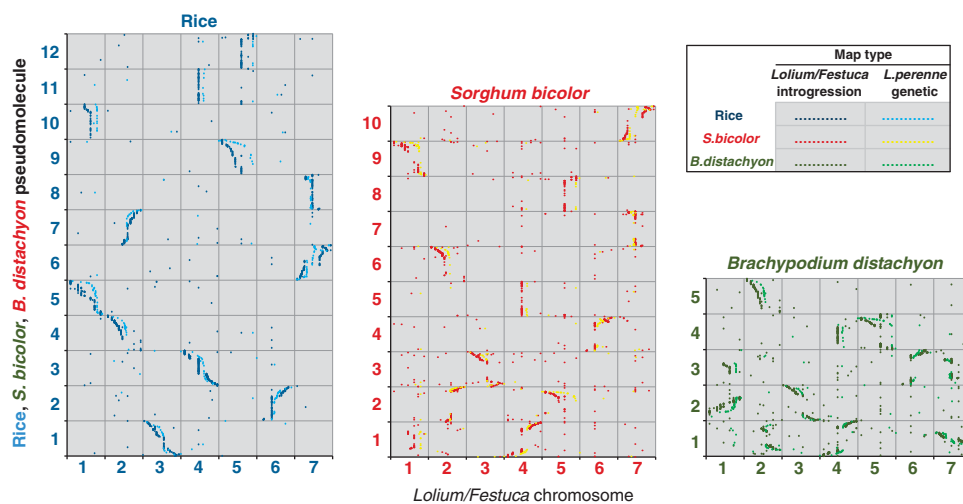


Figure 2 Conserved syntenic relationships between Lolium/Festuca, *L. perenne* and rice, *S. bicolor* and *B. distachyon*. The x axes represent the introgression (Lolium/Festuca) or genetic (*L. perenne*) positions on each chromosome of mapped, sequenced, markers relative to the position (bp) of each marker's most significant BLAST alignment on the rice, *S. bicolor* or *B. distachyon* PMs (y axes).

Lolium/Festuca linkage group 1 (rice PMs 5 and 10)

There are three disruptions in macro-colinearity between rice PM 5 and *L. perenne*/*F. pratensis* linkage group 1 (as determined by the linear order of the BPs from rice PM 5 relative to their bin mapped position in the *L. perenne*/*F. pratensis* introgression map of linkage group 1). No disruptions were found in macro-colinearity between rice PM 10 and *L. perenne*/*F. pratensis* linkage group 1.

Lolium/Festuca linkage group 2 (rice PMs 4 and 7)

This linkage group exhibits only one disruption in macro-colinearity relative to rice involving BPs from rice PM 4.

Lolium/Festuca linkage group 3 (rice PM 1)

The two disruptions to the linear order of the rice 1 BPs on *L. perenne*/*F. pratensis* linkage group 3 were reported in our last paper (King *et al.*, 2007). However, the first of these linkages was originally thought to comprise only BPs 1–5 in a small inversion. The increased resolution of the linkage group 3 introgression map now shows that this disruption actually involves an inversion of all BPs at the end of the chromosome, that is, BPs 1–21.

Lolium/Festuca linkage group 5 (rice PMs 9, 11 and 12)

The introgression map of *L. perenne*/*F. pratensis* linkage group 5 shows no disruption to the linear order of the BPs from rice PM 9 but two disruptions to the linear order of the BPs from rice PM 12.

Lolium/Festuca linkage group 7 (rice PMs 6 and 8)

The linear order of the BPs from rice PM 6 is disrupted three times while that from rice PM 8 is disrupted once. The first disruption to the BPs from rice PM 6 is the only disruption to clearly precede the fusion of the two rice PMs making up Lolium/Festuca linkage

group 7. Rice 6 BPs 121–156 have been inverted and rice PM 8 has then inserted into the middle of this inversion between BPs 133 and 143. (Supplementary Table 14 in the supplementary Information gives a summary of the disruptions to macro-colinearity found between rice PMs 1–12 and *L. perenne*/*F. pratensis* linkage groups 1–7.)

As stated, the linear order of the BPs from rice PM 2 remain in the expected order on *L. perenne*/*F. pratensis* linkage group 6. It is interesting to note, however, that no BPs from rice PM 2 mapped to either end of the chromosome (15% of the physical distance of the chromosome at one end of the chromosome and 17% of the physical distance of the chromosome at the other end). These bins remain ‘empty’ of SNP markers as no BPs from any of the other rice PMs are physically mapped to them. We did, however, map one microsatellite marker to the end bin covering 15% of the physical distance and two microsatellite markers plus five DArT markers to the other end bin (data not shown). Hence, all the markers we have mapped to the end two bins were from genomic libraries.

Comparative relationships between *L. perenne*/*F. pratensis*, *B. distachyon*, *S. bicolor*, barley and wheat

Initial analyses were also made of the syntenic relationships between *L. perenne*/*F. pratensis* and *S. bicolor*, *B. distachyon*, wheat and barley (Figures 2 and 3). For both *S. bicolor* and *B. distachyon* there are clearly strongly conserved blocks of genomic synteny with *L. perenne*/*F. pratensis* distributed across the 10 (*S. bicolor*) and 5 (*B. distachyon*) linkage groups of the two species. The patterns of conserved synteny observed between *L. perenne*/*F. pratensis*, *S. bicolor* and *B. distachyon* are very similar to those reported by (Mayer *et al.* 2011) for the conserved syntenic relationships between barley, *S. bicolor* and *B. distachyon*, indicating the close evolutionary distance between *L. perenne*/*F. pratensis* and barley. This close relationship is also

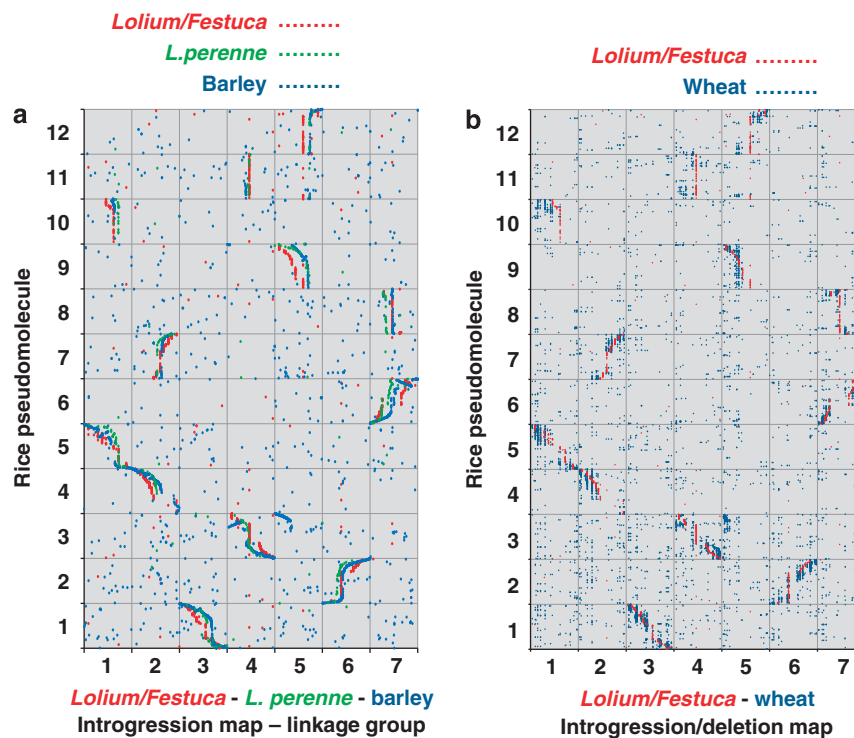


Figure 3 Conserved syntenic relationships between (a) Lolium/Festuca, *L. perenne*, barley and rice, and (b) Lolium/Festuca, wheat and rice. The x axes represent the introgression (Lolium/Festuca), genetic (*L. perenne* and barley) or deletion bin (wheat) positions on each chromosome of mapped, sequenced, markers relative to the position (bp) of each marker's most significant BLAST alignment on the rice, *S. bicolor* or *B. distachyon* PMs (y axes).

illustrated by the comparisons of *L. perenne*/*F. pratensis* with wheat and barley (Figure 3). The one major exception to this conserved synteny occurs on linkage groups 4 and 5. *L. perenne*/*F. pratensis* linkage group 4 contains all the mapped BPs from rice PM 3. However, in barley and wheat, one end of rice PM 3 has been translocated to the end of linkage group 5 in these species. Thus, wheat and barley show a chromosome 4/5 translocation relative to *L. perenne*/*F. pratensis*.

Determination of the frequency of meiotic recombination throughout the genome relative to gene content

Two hundred and eighty-three bin mapped primer pairs spanned SNPs that segregated in the Perma × Aurora mapping population. With very few exceptions, the position of SNPs determined by genetic mapping was the same as that determined via bin mapping. (Supplementary Information Supplementary Table 13 shows the genetic mapping data for the 283 bin mapped SNPs that segregate in the Perma × Aurora mapping population.) The main exceptions observed were as follows: SNPs 364 and 392 from rice PM 1 both bin mapped to *L. perenne*/*F. pratensis* linkage group 3. On the genetic map, however, SNP 364 was located on *L. perenne*/*F. pratensis* linkage group 6 and SNP 392 on linkage group 5. SNP 41 from rice PM 6 bin mapped to *L. perenne*/*F. pratensis* linkage group 7 but on the genetic map was located on linkage group 1. SNP 138 from rice PM 11 also genetically mapped to *L. perenne*/*F. pratensis* linkage group 1 but bin mapped to linkage group 4. Finally, we bin mapped two SNPs from the same putative gene locus on rice PM 9. One of the SNPs bin mapped to *L. perenne*/*F. pratensis* linkage group 5 as expected but the other SNP bin mapped to linkage group 6. Only the second SNP segregated in the Perma × Aurora mapping population. In this case the genetic mapping confirmed the bin mapping by placing this SNP on linkage group 6.

Figure 4 estimates the relationship between the physical positions of bin mapped SNPs relative to their genetic positions as determined from the Perma × Aurora mapping family. The highest levels of recombination were observed at the two distal regions of each chromosome. Low to very low levels of recombination were observed in the proximal regions of the chromosomes. The exception to this was chromosome 5, which showed a peak of recombination in only one of the two distal regions.

Although regions of high and low recombination were observed, the cumulative frequency of SNP markers is reasonably evenly

distributed, physically, along the length of each chromosome. Hence, recombination does not reflect SNP (mapped gene) content; that is, while some genes lie in regions of high recombination, a significant proportion of genes in the *L. perenne*/*F. pratensis* genome lie in regions of low/very low recombination frequency.

The syntenic relationship between *L. perenne*/*F. pratensis* and rice is such that four *L. perenne*/*F. pratensis* linkage groups carry a region syntenic to a rice PM in a proximal region (Figures 1 and 2). Three of the proximal regions in *L. perenne*/*F. pratensis* that are syntenic to rice PMs 10, 11 and 8 (*L. perenne*/*F. pratensis* linkage groups 1, 4 and 7, respectively) undergo very low frequencies of recombination. *L. perenne*/*F. pratensis* linkage group 2 is composed of two distal regions, which are syntenic to rice PM 4 and a region syntenic to rice PM 7 between the two rice PM 4 regions. Part of the region syntenic to rice PM 7 does undergo a higher frequency of recombination. However, while this region covers the proximal part of *L. perenne*/*F. pratensis* linkage group 2, it also extends into the distal region of one arm with only a relatively small region of genes syntenic to rice 4 located terminally to it.

Similar patterns are observed in the comparisons between *L. perenne*/*F. pratensis* and *S. bicolor* (Figure 2). The highest frequencies of recombination occur distally with the lowest occurring proximally. Furthermore, proximal regions of *L. perenne*/*F. pratensis* syntenic with complete *S. bicolor* PMs undergo a very low frequency of recombination. An analysis of the relationship of recombination between *L. perenne*/*F. pratensis* and *B. distachyon* again revealed that higher recombination is observed in the distal regions of the chromosomes and low frequencies of recombination occur at the proximal regions (Figure 2).

DISCUSSION

This paper describes the transfer of the entire genome of *F. pratensis* in overlapping chromosome segments into *L. perenne* and also the development of 1612 bin mapped SNP markers anchored to the rice genome. It has also demonstrated that the primers developed are of value for genetic mapping of SNPs in the Aurora × Perma *L. perenne* × *L. perenne* mapping population. In addition, many of the primers developed, amplify and identify SNPs in wheat and its wild and cultivated relatives (data not shown). These are presently being exploited in a wheat/alien introgression programme.

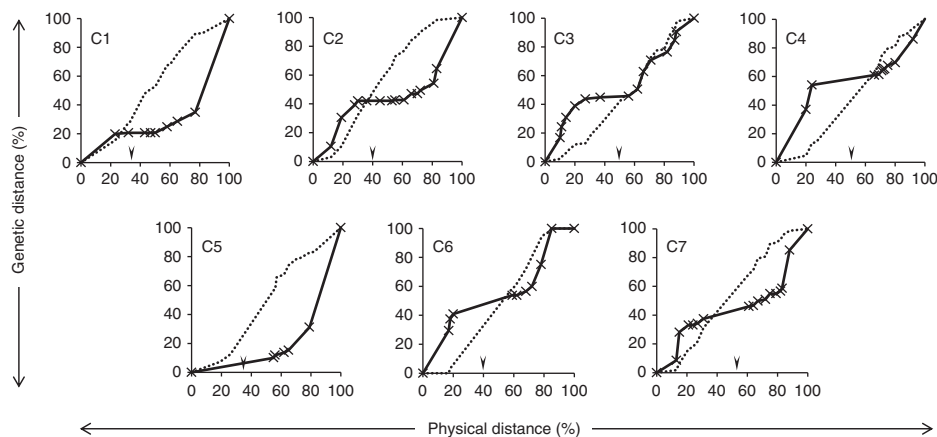


Figure 4 Estimates of the relationship between physical/cytogenetic and genetic distance (black line) for *L. perenne*/*F. pratensis* chromosomes (C) 1–7. Physical/cytogenetic distances (horizontal axis) were derived from the *L. perenne*/*F. pratensis* introgression mapping population and genetic distances (vertical axis) from a *L. perenne* F2 genetic mapping population; both types of distances are expressed as % of the total observed for each chromosome. The cumulative % total of rice-anchored markers mapped in each physical bin for *L. perenne*/*F. pratensis* chromosomes 1–7 is indicated by the dotted line. The vertical arrowhead above each x axis indicates the approximate positions of the centromere for each chromosome.

Exploitation of *Lolium/Festuca* introgression lines

Determination of the genetic control of target traits. The *F. pratensis* introgressions generated, provide a new and important source of genetic variation for agronomically important target traits within the grasses for the development of new varieties and fundamental research. The strategy for utilising this resource for the identification and determination of the genetic control of target traits leading to exploitation in breeding programmes is as follows: (1) The seven monosomic substitution lines (and the four parental genotypes) will be screened for variation for a target trait. (2) Once a substitution line(s) that shows variation for the target trait has been identified the overlapping recombinant series derived from it will be screened for the presence or absence of the trait thus enabling the gene(s) responsible to be mapped to a specific bin. The SNPs that map within the bin will then be used to transfer the gene into elite breeding material and also provide a platform from which the gene can be isolated (for example, Armstead *et al.*, 2006a, 2007a).

Comparative analysis between *Lolium/Festuca* and other monocots. The bin mapping of the BPs from rice showed that *L. perenne/F. pratensis* linkage groups 3 and 6 were collinear with rice PMS1 and 2, respectively. The remaining *L. perenne/F. pratensis* linkage groups, that is, 1, 2, 4, 5 and 7, were each collinear with two rice PMs (LF1, R5+R10, LF2, R4+R7, LF4, R3+R11, LF5, R9+R12, LF7, R6+R8). Analogous macro-syntenic relationships have previously been reported between rice and the Triticeae (initially by Moore, 1995; Moore *et al.*, 1995). *L. perenne/F. pratensis* linkage groups 1, 2, 4 and 7 are composed of two colinear rice PMs, where one rice PM has been inserted into another PM. The insertion of one rice chromosome into the middle of the second, leading to a reduction in chromosome number, is also consistent with previous findings from other Poaceae species, for example barley—(Korzun and Künzel, 1996); finger millet—(Srinivasachary *et al.*, 2007); wheat—(Salse *et al.*, 2008); (Luo *et al.*, 2009).

The presence of a chromosome 4/5 translocation (confirming the previous observation by Alm *et al.*, 2003) in wheat and barley demonstrated one example where synteny at the macro level had broken down between these species and *L. perenne/F. pratensis*. A possible further break down in synteny between these species has been reported, that is, a putative insertion of wheat/barley linkage group 2 at one end of *Lolium/Festuca* linkage group 6 (Alm *et al.*, 2003). However, it was not possible to confirm this as no SNPs were bin mapped to the ends of *Lolium/Festuca* linkage group 6.

It has been postulated that the progenitor of the monocots had five chromosomes, which then underwent an increase in chromosome number to 12, as seen in rice, followed by a reduction in chromosome number to seven in the Poaeae, Triticeae and Aveneae grasses (Murat *et al.*, 2010). The fact that: (1) with one exception, all the inversions observed in *Lolium/Festuca* relative to rice were observed in a single rice PM and (2) that the macro synteny in *L. perenne, F. pratensis*, wheat and barley has largely been maintained indicates that the inversions observed relative to rice occurred in the 12 chromosome progenitor of the Poaceae.

The centromeric positions have been established for the 12 rice PMs (web site) (Rice Genome Annotation Project—Ouyang *et al.*, 2007, rice.plantbiology.msu.edu/) and with the resolution of the introgression maps it is possible to compare the location of the 12 rice centromeres with those of the seven *Lolium/Festuca* centromeres. In *L. perenne/F. pratensis*, linkage groups 3 and 6, which showed synteny to only one rice PM, the bin containing the physical location of the *Lolium/Festuca* centromere, also contains BPs surrounding the

relevant rice centromere. For example, the rice genome annotation project gives the centromeric position of rice PM 1 centromere as BP B1061G08 (BP 157 as described in this paper). BPs on either side of 157, that is, 147 and 181, have been mapped to the bin located between 47 and 53% of the physical distance along the chromosome, which also contains the *L. perenne/F. pratensis* linkage group 1 centromere. The same occurs in *L. perenne/F. pratensis* linkage group 6 although the bin containing the centromere covers a much larger physical distance, that is, from 41–80%.

In the *L. perenne/F. pratensis* linkage groups showing synteny to two rice PMs, the 'functional' rice centromeric location maps to the bin containing the *L. perenne/F. pratensis* centromere. In *L. perenne/F. pratensis* linkage group 1 the rice 10 centromeric position is located in the same bin as the *L. perenne/F. pratensis* centromere with the centromeric position of rice PM 5 being located two bins away. The rice PM 7 centromere is located in the same bin as the *L. perenne/F. pratensis* linkage group 2 centromere. In *L. perenne/F. pratensis* linkage group 7 the position of the centromere from rice PM 8 is located to the same bin as the *L. perenne/F. pratensis* centromere. However, in *L. perenne/F. pratensis* linkage groups 4 and 5 the centromeric position of both syntenic rice PMs is located to the bins containing the *L. perenne/F. pratensis* centromeres.

The distribution of recombination along the *L. perenne/F. pratensis* chromosomes. A comparison of recombination along the length of each of the seven *L. perenne/F. pratensis* chromosomes revealed that the distal regions showed the highest frequencies of recombination while the proximal regions showed the lowest frequencies of recombination. SNP analysis indicated that genes were distributed both proximally and distally along each of the seven *L. perenne/F. pratensis* chromosomes, that is, in areas of both high and low recombination frequency. This data is in agreement with previous data that showed (1) that genes were distributed throughout the length of *L. perenne/F. pratensis* chromosome 3 and (2) that a large proportion of genes on chromosome 3 (c. 75%) were located in regions of the genome that showed low/very low frequencies of recombination (King *et al.*, 2007). Furthermore, *L. perenne/F. pratensis* linkage groups 1, 4 and 7 (and to a lesser extent linkage group 2) carry regions of DNA syntenic to whole rice linkage groups. Although in rice these linkage groups recombine normally, in the Poaceae they are proximally located, and thus undergo a reduced frequency of recombination. It has previously been postulated that recombination was localised to the distal regions of the genome because these were the regions that were thought to be gene rich while proximal regions of chromosomes were thought to be gene poor (Akhunov *et al.*, 2003). However, it appears more likely that the reduction in recombination may result from physical restraints of the proximal location of DNA in large monocot chromosomes as seen in wheat, *L. perenne* and *F. pratensis*, barley and rye as compared with smaller genome monocots such as rice.

Plant breeders require novel genetic variation to develop new superior plant varieties. This variation is derived from new allelic combinations that are generated via recombination at meiosis in breeding material. In *Lolium/Festuca*, where only very low frequencies of recombination occur at proximal regions of the chromosomes, the majority of new allelic combinations will be generated from the distal regions of the chromosomes. Thus, due to very low frequencies of recombination among a large proportion of the genes that are located in the proximal regions of the genomes of *Lolium/Festuca* and are being under-utilised to generate novel allelic combinations. Therefore, plant breeders are not able to fully exploit a large proportion of the

potential genetic variation available for variety development. Low frequencies of recombination in proximal regions in chromosomes are not restricted to *L. perenne* and *F. pratensis*. Wheat and barley have a similar syntenic arrangement relative to *L. perenne* and *F. pratensis* at the macro level, with the exception of the 4/5 translocation described. Both of these species have also been shown to have distally located chiasmata (Lukaszewski and Curtis, 1993; Künzel *et al.*, 2000; Akhunov *et al.*, 2003).

There has been considerable interest in the exploitation of genetic variation from distant relatives of crop species for many years. However, only limited use of this enormous source of genetic variation in strategic plant breeding programmes has been possible up to now. In this paper we have described how marker technology can be used to introgress small chromosome segments into crops for exploitation in plant improvement programmes. This approach is now being applied in plant improvement programmes for both cereal and forage grass species.

DATA ARCHIVING

Data have been deposited at Dryad: doi:10.5061/dryad.90hc5.

CONFLICT OF INTEREST

The authors declare no conflict of interest.

ACKNOWLEDGEMENTS

We thank Mark Sorrells for the critical reading of this manuscript. This work was supported by the Biotechnology and Biological Sciences Research Council (Grant—BB/E00654X/1).

Akhunov ED, Goodyear AW, Geng S, Qi L-L, Echalié B, Gill BS *et al.* (2003). The organisation and rate of evolution of the wheat genomes are correlated with recombination rates along chromosome arms. *Genome Res* **13**: 753–763.

Alm V, Fang C, Busso CS, Devos KM, Vollan K, Grieg Z *et al.* (2003). A linkage map of meadow fescue (*Festuca pratensis* Huds.) and comparative mapping with other Poaceae species. *Theor Appl Genet* **108**: 25–40.

Ammar K, Mergoum M, Rajoram S (2004). The history and evolution of triticale. In Megoum M, Gomez-Macpherson H (eds). *Triticale improvement and production. FAO Plant Production and Protection series NO. 179*. FAO: Rome, Italy, pp 1–11.

Armstead IP, Donnison IS, Aubry S, Harper JA, Hortensteiner S, James CL *et al.* (2006a). From crop to model to crop: identifying the genetic basis of the staygreen mutation in the *Lolium/Festuca* forage and amenity grasses. *New Phytol* **172**: 592–597.

Armstead IP, Harper JA, Turner LB, Skot L, King IP, Humphreys MO *et al.* (2006b). Introgression of crown rust (*Puccinia coronata*) resistance from meadow fescue (*Festuca pratensis*) into Italian ryegrass (*Lolium multiflorum*): genetic mapping and identification of associated molecular markers. *Plant Pathol* **55**: 62–67.

Armstead IP, Donnison IS, Aubry S, Harper JA, Hortensteiner S, James CL *et al.* (2007a). Cross-species identification of Mendel's *I* locus. *Science* **315**: 73.

Armstead IP, Thomas H, Ougham H, Huang L, King J, King IP (2007b). Rice pseudomolecule-anchored cross-species DNA sequence alignments indicate regional genomic variation in expressed sequence conservation. *BMC Genomics* **8**: 283–329.

Bennett M, Smith JB (1976). Nuclear DNA amounts in angiosperms. *Philos Trans R Soc Lond B Biol Sci* **274**: 227–274.

Bennett MD, Smith JB, Heslop-Harrison JC (1982). Nuclear DNA amounts in angiosperms. *Proc R Soc Lond B* **216**: 179–199.

Close TJ, Bhat PR, Lonardi S, Wu Y, Rostoks N, Ramsay L *et al.* (2009). Development and implementation of high-throughput SNP genotyping in barley. *Bmc Genomics* **10**: 582.

Dreisigacker S, Kishii M, Lage J, Warburton M (2008). Use of synthetic hexaploid wheat to increase diversity for CIMMYT bread wheat improvement. *Austral J Agri Res* **59**: 413–420.

Febrer M, Goicoechea JL, Wright J, McKenzie N, Song XA, Lin JK *et al.* (2010). An integrated physical, genetic and cytogenetic map of *Brachypodium distachyon*, a model system for grass research. *PLoS ONE* **5**: e13461.

García-Olmedo F, Delibes A, Sanchez-Monge R (1977). Transfer of resistance to eyespot disease from *Aegilops ventricosa* to wheat. *Proceedings of the 8th Congress of Eucarpia* 91–97.

Gill GP, Wilcox PL, Whittaker DJ, Winz RA, Bickerstaff P, Echt CE (2006). A framework linkage map of perennial ryegrass based on SSR markers. *Genome* **49**: 354–364.

Gustafson JP, Borlaug NE, Raven PH (2010). World food supply and biodiversity. *World Agriculture* **1**: 37–41.

Griffiths S, Sharp R, Foote TN, Bertin I, Wanous M, Reader S (2006). Molecular characterisation of *PH1* as a major chromosome pairing locus in polyploidy wheat. *Nature* **439**: 749–752.

Harper JA, Armstead IP, Thomas A, James C, Gasior D, Bisaga M *et al.* (2011). Alien introgression in the grasses *Lolium perenne* (perennial rye grass) and *Festuca pratensis* (meadow fescue)—the development of seven monosomic substitution lines and their molecular and cytological characterisation. *Ann Bot* **107**: 1313–1321.

Humphreys J, Harper JA, Armstead IP, Humphreys MW (2005). Introgression mapping of genes for drought resistance transferred from *Festuca arundinacea* var. *glaucescens* into *Lolium multiflorum*. *Theor Appl Genet* **110**: 579–587.

King IP, Morgan WG, Armstead IP, Harper JA, Hayward MD, Bollard A *et al.* (1998). Introgression mapping in the grasses I. Introgression of *Festuca pratensis* chromosomes and chromosome segments into *Lolium perenne*. *Heredity* **81**: 462–467.

King IP, Morgan WG, Harper JA, Thomas HM (1999). Introgression mapping in the grasses. II. Meiotic analysis of the *Lolium perenne/Festuca pratensis* triploid hybrid. *Heredity* **82**: 107–112.

King J, Armstead IP, Donnison IS, Thomas HM, Jones RN, Kearsey MJ *et al.* (2002a). Physical and genetic mapping in the grasses *Lolium perenne* and *Festuca pratensis*. *Genetics* **161**: 315–324.

King J, Roberts LA, Kearsey MJ, Thomas HM, Jones RN, Huang L *et al.* (2002b). A demonstration of a 1:1 correspondence between chiasma frequency and recombination using a *Lolium perenne/Festuca pratensis* substitution. *Genetics* **161**: 307–314.

King J, Armstead IP, Donnison SI, Roberts LA, Harper JA, Skøt K *et al.* (2007). Comparative analyses between *Lolium/Festuca* introgression lines and rice reveal the major fraction of functional annotated gene models are located in recombination poor/very poor regions of the genome. *Genetics* **177**: 597–606.

King J, Thorogood D, Edwards KJ, Armstead IP, Roberts LA, Skøt K *et al.* (2008). Development of a genomic microsatellite library in perennial ryegrass (*Lolium perenne*) and its use in trait mapping. *Ann Bot* **101**: 845–853.

Korzun L, Künzel G (1996). The physical relationship of barley chromosome 5 (1H) to the linkage groups of rice chromosomes 5 and 10. *Mol Gen Genet* **252**: 225–231.

Künzel G, Korzun L, Meister A (2000). Cytologically integrated physical restriction fragment length polymorphism maps of the barley genome based on translocation breakpoints. *Genetics* **154**: 397–412.

Lukaszewski AJ, Curtis CA (1993). Physical distribution of recombination in B-genome chromosomes of tetraploid wheat. *Theor Appl Genet* **84**: 121–127.

Luo MC, Deal KR, Akhunov ED, Akhunova A, Anderson OD, Anderson JA *et al.* (2009). Genome comparisons reveal a dominant mechanism of chromosome number reduction in grasses and accelerated genome evolution in Triticeae. *Proc Natl Acad Sci USA* **106**: 15780–15785.

Mayer KFX, Martis M, Hedley PE, Simkova H, Liu H, Morris JA *et al.* (2011). Unlocking the barley genome by chromosomal and comparative genomics. *Plant Cell* **23**: 1249–1263.

Moore BJ, Donnison SI, Harper JA, Armstead IP, King J, Thomas H *et al.* (2005). Molecular tagging of a senescence gene by introgression mapping of a mutant staygreen locus from *Festuca pratensis*. *New Phytol* **165**: 801–806.

Moore G (1995). Cereal genome evolution—pastoral pursuits with lego genomes. *Curr Opin Genet Dev* **5**: 717–724.

Moore G, Devos KM, Wang Z, Gale MD (1995). Cereal genome evolution—grasses, line up and form a circle. *Curr Biol* **5**: 737–739.

Murat F, Xu JH, Tannier E, Abrouk M, Guihot N, Pont C *et al.* (2010). Ancestral grass karyotype reconstruction unravels new mechanisms of genome shuffling as a source of plant evolution. *Genome Res* **20**: 1545–1557.

Ouyang S, Zhu W, Hamilton J, Lin H, Campbell M, Childs K *et al.* (2007). The TIGR Rice Genome Annotation resource—improvements and new features. *Nucl Acid Res* **35**: D883–D887.

Roderick HW, Morgan WG, Harper JA, Thomas HM (2003). Introgression of crown rust (*Puccinia coronata*) resistance from meadow fescue (*Festuca pratensis*) into Italian ryegrass (*Lolium multiflorum*) and physical mapping of the locus. *Heredity* **91**: 396–400.

Salse J, Bolot S, Throude M, Jouffe V, Piegou B, Quraishi UM *et al.* (2008). Identification and characterisation of shared duplications between rice and wheat provide new insight into grass genome evolution. *Plant Cell* **20**: 11–24.

Sears ER (1956). The transfer of leaf rust resistance from *Aegilops umbellulata* to wheat. *Brookhaven Symposium Biology* **9**: 1–22.

Sears ER (1972). Chromosome engineering in wheat. *Stadler Symposium* **4**: 23–38.

Srinivasachary, Dida MM, Gale MD, Devos KM (2007). Comparative analyses reveal high levels of conserved colinearity between the finger millet and rice genomes. *Theor Appl Genet* **115**: 489–499.

Turner LM, Cairns AJ, Armstead IP, Ashton J, Skøt K, Whittaker D *et al.* (2006). Dissecting the regulation of fructan metabolism in perennial ryegrass (*Lolium perenne*) with quantitative trait locus mapping. *New Phytol* **169**: 45–57.