

Circulating hematopoietic stem cells in patients with choroidal neovascularisation secondary to pathologic myopia

M Sasahara, A Otani, Y Yodoi, N Gotoh, T Kameda
and N Yoshimura

Eye (2009) 23, 746; doi:10.1038/eye.2008.331;
published online 17 October 2008

Since the publication of the above article, the
authors have noticed that Figure 1 is incorrect.

Correction to: *Eye* (2009) 23, 715–723; doi:10.1038/
eye.2008.192; published online 20 June 2008

The correct Figure 1 is show here.
The authors apologise for this mistake.

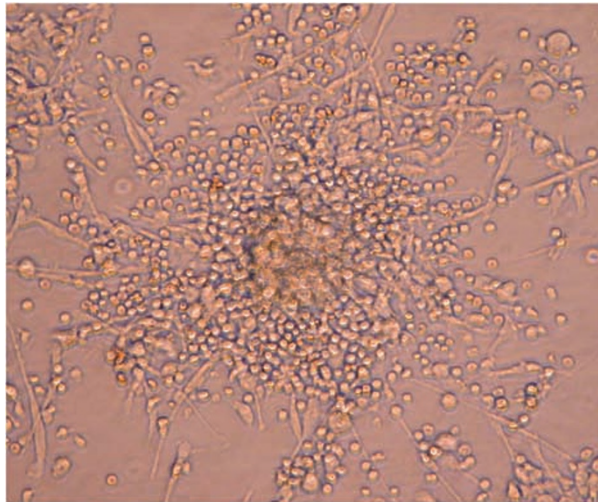


Figure 1 Endothelial colony derived from circulating hematopoietic stem cells.