

ARTICLE

GluD1 is a common altered player in neuronal differentiation from both *MECP2*-mutated and *CDKL5*-mutated iPS cells

Gabriella Livide¹, Tommaso Patriarchi^{1,2}, Mariangela Amenduni¹, Sonia Amabile¹, Dag Yasui³, Eleonora Calcagno⁴, Caterina Lo Rizzo¹, Giulia De Falco⁵, Cristina Ulivieri⁶, Francesca Ariani¹, Francesca Mari^{1,7}, Maria Antonietta Mencarelli^{1,7}, Johannes Wilhelm Hell², Alessandra Renieri^{*,1,7} and Ilaria Meloni¹

Rett syndrome is a monogenic disease due to *de novo* mutations in either *MECP2* or *CDKL5* genes. In spite of their involvement in the same disease, a functional interaction between the two genes has not been proven. MeCP2 is a transcriptional regulator; *CDKL5* encodes for a kinase protein that might be involved in the regulation of gene expression. Therefore, we hypothesized that mutations affecting the two genes may lead to similar phenotypes by dysregulating the expression of common genes. To test this hypothesis we used induced pluripotent stem (iPS) cells derived from fibroblasts of one Rett patient with a *MECP2* mutation (p.Arg306Cys) and two patients with mutations in *CDKL5* (p.Gln347Ter and p.Thr288Ile). Expression profiling was performed in *CDKL5*-mutated cells and genes of interest were confirmed by real-time RT-PCR in both *CDKL5*- and *MECP2*-mutated cells. The only major change in gene expression common to *MECP2*- and *CDKL5*-mutated cells was for *GRID1*, encoding for glutamate D1 receptor (GluD1), a member of the δ -family of ionotropic glutamate receptors. GluD1 does not form AMPA or NMDA glutamate receptors. It acts like an adhesion molecule by linking the postsynaptic and presynaptic compartments, preferentially inducing the inhibitory presynaptic differentiation of cortical neurons. Our results demonstrate that *GRID1* expression is downregulated in both *MECP2*- and *CDKL5*-mutated iPS cells and upregulated in neuronal precursors and mature neurons. These data provide novel insights into disease pathophysiology and identify possible new targets for therapeutic treatment of Rett syndrome.

European Journal of Human Genetics (2015) 23, 195–201; doi:10.1038/ejhg.2014.81; published online 11 June 2014

INTRODUCTION

Rett syndrome (RTT, OMIM #312750) is a monogenic disorder that affects normal brain development during early childhood with an incidence of 1 in 10 000–15 000 live female births.^{1,2} Patients with the classic form of RTT show apparently normal development until 6–18 months after birth when clinical signs of a mental regression start to become apparent. These include loss of speech and purposeful hand use, stereotypic hand movements, appearance of postnatal microcephaly, autistic features, ataxia, and hand apraxia.^{2,3} Other clinical hallmarks include spasticity, respiratory abnormalities, and autonomic dysfunctions.⁴ Depending on disease severity, some variants such as Z-RTT (previously known as Preserved Speech Variant (PSV)), 'forme fruste', congenital form, and early-onset seizures variant have been described in addition to classic RTT.^{2,5}

Mutations in *MECP2* gene, located in Xq28, are responsible for ~90% of classical RTT cases and a lower percentage of variant patients.^{6,7} *MECP2* encodes for a transcriptional regulator and epigenetic modifier. MeCP2 protein is widely expressed and its relatively higher expression in brain is spatially and developmentally regulated: its levels are low during embryogenesis and increase during postnatal neuronal maturation.^{8,9} A very small number of MeCP2

target genes have been identified so far and the several transcriptional profiling studies performed on various tissues (brain from mouse models, fibroblasts and lymphocytes derived from mutated patients, and autaptic brain tissue) resulted in sets of de-regulated genes that differed for each study.^{10–12} Notably, analysis of postmortem brain tissue from patients carrying *MECP2* mutations showed reduction in the mRNA and protein levels of many synaptic markers and a decreased number of dendritic spines in distinct cortical areas.^{13,14} A significant alteration of NMDA, AMPA, and GABA receptors was demonstrated in the cortex and basal ganglia of patients, indicating that RTT is associated with abnormalities in the expression of molecules crucial for both excitatory and inhibitory synaptic transmission.^{15,16}

Mutations in another X-linked gene, *CDKL5* (*cyclin dependent kinase like 5*), are responsible for the early-onset seizures variant of RTT.^{17,18} Cdkl5 is a ubiquitous protein kinase particularly expressed in the brain.^{19,20} It shuttles between the cytoplasm and the nucleus;²¹ in neurons, the shuttling is regulated by the activation of extrasynaptic NMDA receptors that induce protein relocalization from nucleus to cytoplasm, and also regulate its degradation by the proteasome.²² Moreover, neuronal Cdkl5 is enriched on the

¹Medical Genetics, University of Siena, Siena, Italy; ²Department of Pharmacology, School of Medicine, University of California, Davis, Davis, CA, USA; ³Department of Medical Microbiology and Immunology, University of California, Davis, Davis, USA; ⁴Department of Neuroscience, University of Torino, Torino, Italy; ⁵Department of Medical Biotechnology, University of Siena, Siena, Italy; ⁶Department of Life Sciences, University of Siena, Siena, Italy; ⁷Genetica Medica, Azienda Ospedaliera Universitaria Senese, Siena, Italy

*Correspondence: Professor A Renieri, Medical Genetics, Department of Medical Biotechnology, University of Siena, Siena, Italy. Tel: +39 0577 233303; Fax: +39 0577 233325; E-mail: alessandra.renieri@unisi.it

Received 17 October 2013; revised 17 March 2014; accepted 4 April 2014; published online 11 June 2014

postsynaptic site of excitatory synapses where it seems to be involved in the establishment of correct spine morphology and function.²³ A direct interaction of Cdkl5 with Dnmt1 has been reported, suggesting that it might also be involved in the regulation of DNA methylation and thus gene expression.²⁴ Transcriptome analysis has been recently performed on fibroblasts from *CDKL5*-mutant patients revealing alterations in a few genes involved in differentiation and oxidative stress.²⁵

The overlapping phenotype of *MECP2*- and *CDKL5*-mutated patients, the similar expression pattern during postnatal mouse brain development, and the interaction of both proteins with Dnmt1 suggest that Cdkl5 and MeCP2 might participate in a common neuronal pathway.²⁴ Studies investigating the possibility of a direct functional interaction between the two proteins gave conflicting results. Mari *et al*²⁶ suggested that: (1) *CDKL5* binds and phosphorylates MeCP2 *in vitro* and *in vivo*; (2) *CDKL5* is able to autophosphorylate itself and to phosphorylate MeCP2 *in vitro*; and (3) this capability is lost in mutant MeCP2 proteins.²⁷ Opposite results were obtained by Lin *et al*²⁰ who showed that MeCP2 binds *CDKL5* but is not a direct target of its phosphorylation. More recently, a role for MeCP2 in the regulation of *CDKL5* expression levels in brain has been demonstrated.²⁸

A revolutionary approach for the creation of patient-specific human cellular models for neurologic and neurodevelopmental disorders has been developed in 2007 when Yamanaka and colleagues²⁹ demonstrated that adult somatic cells can be reverted to induced pluripotent stem (iPS) cells, an immature status analogous to embryonic stem cells. The iPS cells are similar to human embryonic stem cells (hESCs) for gene expression, morphology, proliferation, and pluripotency.^{29,30} Thanks to the capacity of these cells to differentiate into neurons, many neurodegenerative (amyotrophic lateral sclerosis (ALS), spinal muscular atrophy (SMA), Huntington's disease (HD), familial dysautonomia (FD), Parkinson's disease (PD), Alzheimer's disease (AD)) and neurodevelopmental diseases (Fragile X syndrome (FXS), schizophrenia (SCZD), Prader-Willi/Angelman's syndrome (PW/AS)) have been modeled with patient-specific iPS cells.^{31–33} This technology has also been employed for the study of RTT. In particular, different groups generated *MECP2*-mutated iPS lines and characterized the resulting neurons reporting morphological and electrophysiological defects corresponding to those found in both mouse brain and patient autoptic material.^{34–36} In 2010, we generated iPS lines from two patients with *CDKL5* mutations, one female and one male.³⁷ For the female patient, isogenic clones expressing either the wild-type or the mutant *CDKL5* allele were obtained. In order to test whether *CDKL5* could be involved in the regulation of gene expression and to define the molecular mechanisms involved in *CDKL5*-associated disease, we now searched for alterations in global gene expression profiles in *CDKL5*-mutant iPS cells. This analysis identified six dysregulated genes of which *GRID1* was dysregulated in both *MECP2*-mutated and *CDKL5*-mutated iPS cells.

MATERIALS AND METHODS

See Supplementary Online Data for full methods.

iPS clones

Previously characterized fully reprogrammed iPS clones derived from one male and one female *CDKL5*-mutated patient were used.³⁷ The female patient harbors a truncating mutation c.1039C>T (p.(Gln347Ter)), whereas the male patient has a missense change c.863C>T (p.(Thr288Ile)). For the female patient, three iPS clones differing for *CDKL5* allelic expression were used: clone 20 that exclusively expresses the wild-type *CDKL5* allele and clone 46 and clone

33 with exclusive expression of the mutated *CDKL5* allele. For the male patient, one clone was used (clone 58) and a clone derived from normal male fibroblasts (BJ) was used as control. One *MECP2* mutant clone c.916C>T (p.(Arg306Cys)) and BJ control clone were obtained from James Ellis laboratory (Toronto, ON, Canada).³⁸ Mutation numbering is based on the following reference sequences: NM_004992.3 for *MECP2* and NM_003159.2 for *CDKL5*.

Clones maintenance and neuronal differentiation

The iPS cells were maintained and differentiated as previously described (see Supplementary Data).³⁷ At day 18, neural precursor cells (NPCs) were isolated using Anti-PSA-NCAM MicroBeads (30-092-966, Miltenyi Biotec, Bologna, Italy) according to the manufacturer's protocol. Sorted cells were fluorescently stained with an anti-IgM antibody conjugated with PE dye (130-095-908; Miltenyi Biotec) and analysed by flow cytometry using a GUAVA EasyCyte 6-2L instrument (Merk-Millipore group, Billerica, MA, USA) to assess purity of the recovered population. Unlabelled cells were used as negative control. Cultures were harvested at day 70 for analysis of mature neurons. To obtain a more pure population of neurons for qRT-PCR, mature cultures were sorted using a CD24 MicroBead Kit (130-095-951, Miltenyi Biotec).³⁹ Sorted neurons were plated on poly-ornithine and laminin-coated slides and allowed to attach for 48 h before being stained for β -III-Tubulin (Chemicon; Merk-Millipore group) to confirm their identity.

RNA isolation

Total RNA was extracted from iPS clones with RNeasy mini kit (Qiagen, Milano, Italy). For clones derived from the female patient, the exclusive expression of only one *CDKL5* allele was confirmed as previously reported.³⁷

Microarray analysis

Agilent Two-Color Microarray-Based gene expression analysis (Quick Amp Labeling, Agilent Technologies, Torino, Italy) protocol was used for global gene expression analysis. For each clone, four technical replicates were performed to control technical bias. Microarray raw data were analysed by Agilent Feature Extraction Software v9.5 for quality assessment. Gene Spring GX software v11.5 (Agilent Technologies) was used for data processing and analysis. Data for each mutant/control pair were analysed independently. Significantly modulated genes were defined as those with absolute fold change (FC) of > 1.5. The lists of deregulated genes obtained for the two mutant/control pairs were compared in order to identify common entries. Microarray data are available in the ArrayExpress database (www.ebi.ac.uk/arrayexpress) under accession number E-MTAB-2223.

Real-time qRT-PCR

Quantitation was performed using commercial TaqMan probes from Applied Biosystem (Life Technologies, Monza, Italy) (*GRID1* assay id: Hs00324946_m1; *LST1* assay id: Hs00938298_g1; *RESPI8* assay id: Hs01563187_m1; *ODF4* assay id: Hs00537806_m1). The *Cyclophilin* (*CYCLO*) gene was used as a reference (assay id: Hs01565700_g1). Student's *t*-test with a significance level of 95% was used for the identification of statistically significant differences in expression levels among different clones.

Immunoblotting

Proteins from neuronal cell pellets were extracted with a 10-fold excess of RIPA buffer, cleared with an ultracentrifugation step, and analysed by western blot.

Immunoprecipitation

Proteins were immunoprecipitated from mouse brain lysate by incubation with Protein A-covered beads and the specific antibody, before being washed three times and being analysed in western blot.⁴⁰

Chromatin immunoprecipitation (ChIP)

Chromatin was prepared from human SH-SY5Y neuroblastoma cells as described previously.⁴¹ ChIP-isolated chromatin was subjected to quantitative PCR with primers targeting the *GRID1* promoter region (*GRID1*_For: 5'-ATG

AGCCAGCAAGGTGACTT-3'; *GRID1*_Rev: 5'-GGGTGGGTCAGGTTTCACTA-3'). PCR was performed in triplicate. Statistical evaluation was performed using a two-tailed *t*-test, assuming unequal variance.

RESULTS

Microarray analysis of iPS cells

Expression profiling was performed on iPS clones from two patients (one female and one male) with *CDKL5* mutations.³⁷ For the female patient (*CDKL5* mutation c.1039C>T, p.(Gln347Ter)) we compared one clone expressing the mutant *CDKL5* allele (46) to another clone from the same patient that expresses the wild-type allele (20). Maintenance of X-chromosome inactivation and the resulting monoallelic expression of *CDKL5* were confirmed by androgen receptor assay and direct sequencing of *CDKL5* mRNA. The clone derived from the male patient (58; *CDKL5* mutation c.863C>T, p.(Thr288Ile)) was compared with a clone derived from a normal newborn male (BJ).³⁸ For each mutant/control pair, four technical replicates were performed for a total of eight chip hybridizations. Differences in gene expression between wild-type and mutant clones for each patient were calculated using the FC cutoff of 1.5 and $P < 0.05$. From the first comparison (46 *versus* 20) we obtained 137 dysregulated genes, whereas for the second comparison (58 *versus* BJ) 190 genes with altered expression were identified (Supplementary Tables 1 and 2). None of these genes passed the Benjamini and Hochberg correction for FDR, probably because of the very low number of genes with altered expression. We decided, however, to compare the two gene lists to check whether common genes were present and we identified six common genes; four genes were consistently dysregulated in the same direction in both cases, one with decreased levels and the others with increased expression (Table 1). To confirm the dysregulation, real-time RT-PCR analysis was performed on an independent preparation of RNA from the same clones. RNA derived from a second clone from the female patient expressing mutant *CDKL5* allele (clone 33) and from an *MECP2*-mutated iPS clone (15; MeCP2 mutation c.916C>T, p.(Arg306Cys)) were also included. A downregulation (~50%) of *GRID1* gene was confirmed in the *CDKL5*-mutated clones; intriguingly, a similar reduction was also observed in the clone with *MECP2* mutation (Figure 1). *GRID1* expression in clone 20 (expressing wild-type *CDKL5* allele) was comparable to that observed in BJ control (Figure 1), strongly suggesting that the reduction in expression is a specific consequence of *CDKL5* or *MECP2* mutation.

GRID1 expression in NPCs and neurons

GRID1 encodes GluD1, a member of the orphan δ -glutamate ionotropic receptor family. We thus decided to validate our results on NPCs and mature neurons. To reduce the potentially confounding effect of genetic background, for *CDKL5* mutations only the clones derived from the female patient were used. The iPSCs were

differentiated toward a neuronal fate and NPCs were isolated from differentiating cultures using a MicroBeads-conjugated antibody that recognizes PSA-NCAM⁴² (Figure 2a). Flow cytometry analysis on purified NPCs confirmed the efficiency of enrichment (Figure 2b). *GRID1* expression in NPCs appears more variable with significantly different expression between BJ control and clone 20 (Figure 2c). Surprisingly, a significant overexpression was observed in NPCs from both clone15 (*MECP2* mutation) and clones 46 and 33 (*CDKL5* mutation c.1039C>T, p.(Gln347Ter)). Neurons were isolated from mature cultures using a MicroBeads-conjugated anti-CD24 antibody³⁹ (Figure 2a). Immunofluorescence staining with β -III-Tubulin confirmed the neuronal identity of the sorted cells (Supplementary Figure 1). Analysis of mature neurons confirmed *GRID1* overexpression, although the difference did not reach statistical significance for the *MECP2*-mutated clone (Figure 2d). To verify whether the increased mRNA levels were accompanied by alterations in protein levels, GluD1 protein was quantitated in extracts from mature neurons differentiated with the same protocol. Because of the difficulty of isolating sufficient amounts of protein from sorted neurons, the analysis was performed on nonsorted cultures. The analysis confirmed a significant increase in protein levels in extracts obtained from both *CDKL5*-mutated and *MECP2*-mutated clones (Figure 3).

Considering the role of MeCP2 as a transcriptional regulator, we wondered whether the alteration in *GRID1* expression in the *MECP2*-mutated clone might indicate that MeCP2 protein directly binds to the *GRID1* promoter to regulate its expression. To answer this question, ChIP experiments with an anti-MeCP2 antibody were performed in SHSY-5Y neurons. The analysis indeed demonstrated a modest but statistically significant binding of MeCP2 protein to the *GRID1* promoter (Figure 4).

DISCUSSION

RTT is a monogenic disease due to *de novo* mutations in either *MECP2* (classic and Zappella variant) or *CDKL5* (early-onset seizures variant) genes on the X chromosome. The overlapping phenotype observed in patients with mutations in the two genes suggests that they might act, at least in part, on common pathways. MeCP2 is a transcriptional regulator involved in both activation and repression of gene expression.⁴³ *CDKL5* encodes for a kinase protein that exerts multiple functions inside the cell.^{23,24,44,45} It directly interacts with Dnmt1 and mediates its phosphorylation and it is involved in the structural organization and dynamics of nuclear speckles, suggesting that, like MeCP2, it might be implicated in the regulation of gene expression.^{24,45} We thus hypothesized that mutations in the two genes may lead to similar phenotypes by dysregulating the expression of common genes. To test this hypothesis, we used iPS cells derived from patients mutated in *MECP2* and *CDKL5*. Expression profiling in *CDKL5*-mutated iPS cells from two patients with different mutations

Table 1 Common deregulated genes

Gene symbol	Gene name	Accession number	Fold change 58/BJ	Fold change 46/20
<i>GRID1</i>	Glutamate receptor, ionotropic, δ -1	NM_017551	-2.1036077	-1.6889609
<i>LST1</i>	Leukocyte-specific transcript 1	NM_007161	3.537233	1.5218107
<i>SLC23A3</i>	Solute carrier family 23 (nucleobase transporters), member 3	AK055730	2.0275977	3.1108685
<i>RESP18</i>	Regulated endocrine-specific protein 18	NM_001007089	2.1038992	2.5666316
<i>HLA-DQA2^a</i>	Major histocompatibility complex, class II, DQ α 2	NM_020056	-1.5860842	1.5345135
<i>GUSBP3^a</i>	Glucuronidase, β pseudogene 3	NR_027386	-2.231126	1.6598059

^aThese genes have been excluded from RT-PCR validation because of the opposite values of fold change observed in the two sample pairs.

resulted in six common genes and a larger number of clone-specific alterations. None of these genes is present among those recently reported by Nectoux *et al*⁴⁶ in fibroblasts from three patients with

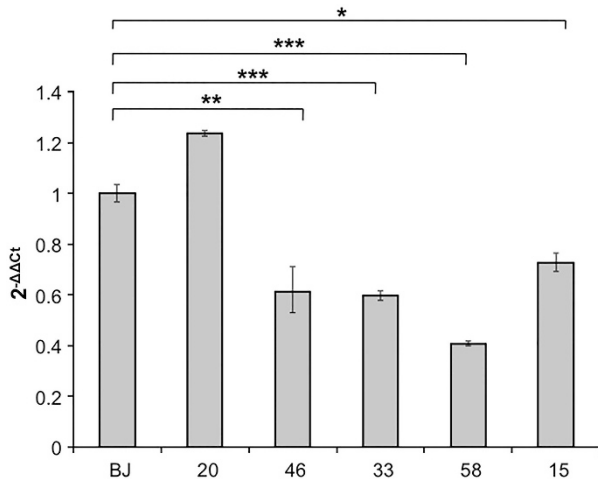


Figure 1 Real-time RT-PCR analysis of *GRID1* mRNA levels in iPS clones. *CDKL5* (33, 46, and 58)- and *MECP2* (15)-mutated clones were analysed. BJ is a control clone derived from a healthy newborn male and clone 20 is a clone harbouring the *CDKL5* mutation in one X chromosome but expressing the wild-type allele from the other X chromosome because of X-chromosome inactivation. The y axis shows $2^{-\Delta\Delta Ct}$ values (\pm SD). * $P \leq 0.01$; ** $P \leq 0.05$; *** $P \leq 0.001$.

frameshift *CDKL5* mutations. This is not an unexpected finding, considering the different cell types analysed (iPS *versus* fibroblasts). Moreover, very limited overlap is usually present among dysregulated genes resulting from different expression profiling analyses, as widely documented from studies on *MECP2*.^{11,14,47} Validation of the six common genes demonstrated that *GRID1* was consistently downregulated in both *CDKL5*-mutated and *MECP2*-mutated iPS cells (Figure 1). Analysis of neuronal precursors derived from these clones demonstrated that the absence of a functional MeCP2 or *CDKL5* protein resulted in a significant upregulation of *GRID1* mRNA in these cells (Figure 2). The upregulation persists in mature neurons.

GRID1 encodes the orphan δ -glutamate receptor subunit-1 (GluD1) and, together with *GRID2*, constitutes the δ -family of ionotropic glutamate receptors.⁴⁸ However, no channel function has been presently demonstrated either alone or in combination with other receptor subunits, and available data point to a role in synapse development rather than functioning.^{49–51} In particular, the postsynaptic GluD1 binds to presynaptic neurexin through cerebellin (Cbln) to induce presynaptic differentiation. Depending on the specific brain region, this can result in the formation of glutamatergic (cerebellum and hippocampus) or GABAergic (cortex and hippocampus) synapses, although GABAergic differentiation seems to be the prevalent outcome.^{51–53} Our experiments show that GluD1 is overexpressed in mature neurons derived from both *MECP2*- and *CDKL5*-mutated iPS cells. ChIP analysis in SHSY-5Y neurons indicate that MeCP2 binds to the *GRID1* promoter, suggesting that the increased expression might arise from the

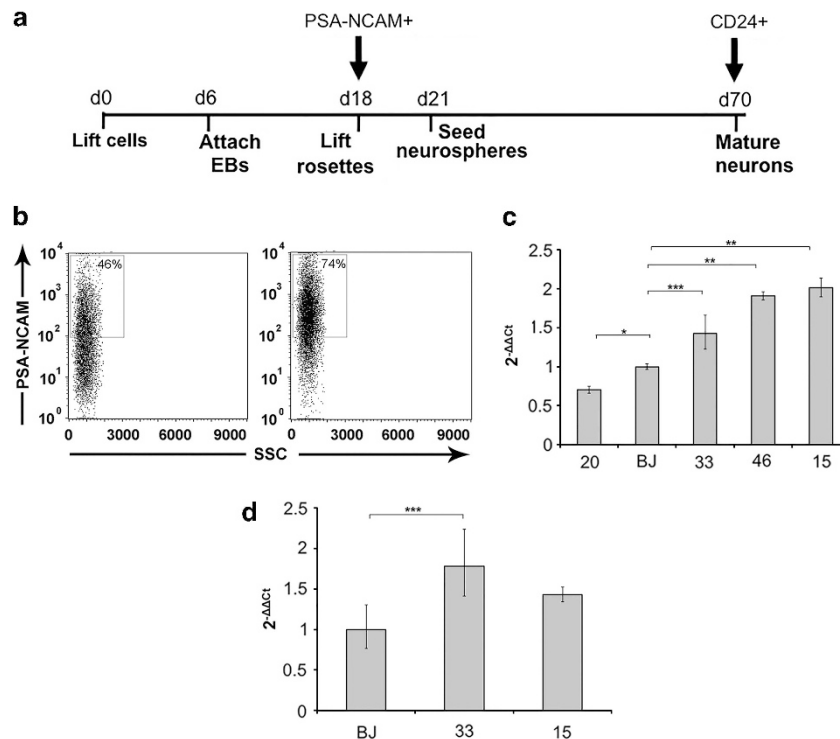


Figure 2 (a) Overview of the neuronal differentiation protocol showing the timing of specific passages expressed in days respect to day 0 (d0) defined as the first day of the protocol. The arrows indicate the day at which neuronal precursors (PSA-NCAM+) or neurons (CD24+) were sorted for expression analysis. (b) FACS analysis of differentiating cultures before sorting (left) and after sorting with anti-PSA-NCAM microbeads (right) showing a significant enrichment in positive cells. The x axis shows SSC (side scatter), and the y axis shows fluorescence intensity. (c) *GRID1* expression analysis in PSA-NCAM+ NPCs (day 18) mRNA derived from neuronal differentiation of *CDKL5* (20, 46, and 33)- and *MECP2* (15)-mutated clones (for clone identification see Figure 1 legend). (d) Expression analysis in mature neurons at day 70 of differentiation protocol sorted with anti-CD24 microbeads. The y axis in (c) and (d) shows $2^{-\Delta\Delta Ct}$ values (\pm SD). * $P \leq 0.01$; ** $P \leq 0.0001$; *** $P \leq 0.05$.

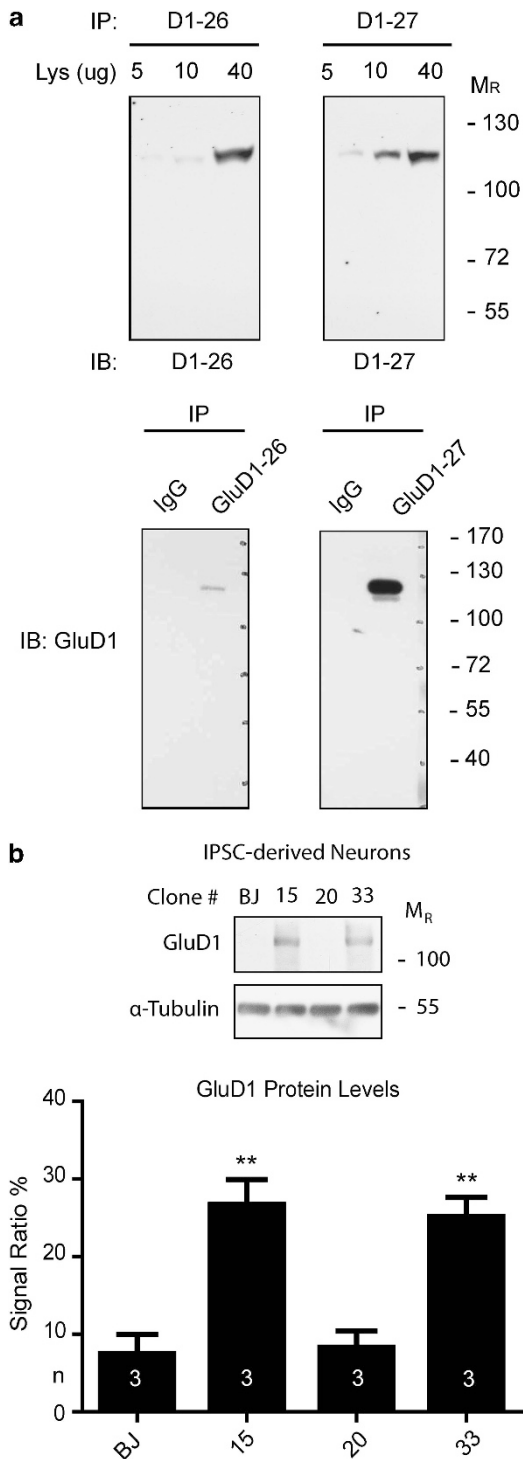


Figure 3 (a) Anti-GluD1 antibody characterization. Different amounts of mouse brain lysate as well as immunoprecipitates (with mouse nonspecific IgG as control) were loaded and probed for two different antibody batches (26 and 27) to double-proof the identity of the recognized epitope. (b) GluD1 expression in iPSC-derived neurons. Each lane was loaded with 30 μ g of total protein. Experiments were performed in triplicate ($n=3$). Immunosignals were detected using autoradiographic films, and glutamate- δ -1 receptor levels were quantified using Photoshop CS3 software (Adobe Systems, San Jose, CA, USA) and normalized against α -tubulin levels (** $P<0.01$, Student's t -test).

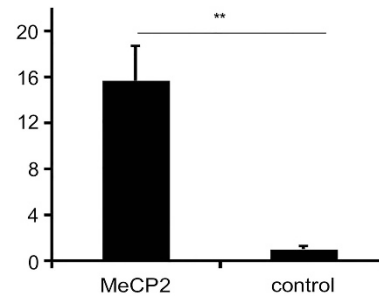


Figure 4 Chromatin immunoprecipitation with anti-MeCP2 and control antibodies shows MeCP2 binding to the *GRID1* promoter in SHSY-5Y neuroblastoma cells. The graph shows fold enrichment of target DNA isolated by ChIP using MeCP2 NH2 antibody normalized to a control preimmune antibody. Error bars show SEM. ** $P=0.0048$ by two-tailed t -test, assuming unequal variance.

absence of a direct repression by MeCP2. In *Mecp2*-mutant mice, a significant reduction in dendritic spine number has been reported, suggesting decreased excitatory synapse capacity.^{54,55} Accordingly, *MECP2*-null neurons have a significant reduction in VGLUT/PSD-95 puncta and excitatory postsynaptic current (EPSC) amplitude, whereas MeCP2 overexpression results in the opposite effects, suggesting that MeCP2 might regulate the excitation/inhibition balance in the CNS by controlling the number of excitatory synapses.^{56,57} A similar impairment has been reported in both *CDKL5*-silenced mouse hippocampal neurons and patient iPSC-derived neurons.²³ Considering the ability of GluD1 to induce the maturation of GABAergic synapses in telencephalic neurons, it can be hypothesized that its overexpression in the absence of both MeCP2 and CDKL5 might contribute to the reduction in excitatory synapses number by causing a shift toward differentiation of inhibitory synapses. Although no such alteration has been evidenced in the above-mentioned studies, analyses on *Mecp2* mouse models have demonstrated extensive region-specific variation in synaptic defects.^{51,58–60} Additional studies will thus be necessary to verify whether an increased GABAergic differentiation is indeed present in our culture conditions and to possibly characterize the identity of the neuronal population involved.

Although available data point to a role for *GRID1* in neuronal maturation, we already detected alteration of *GRID1* expression in NPCs. No data are presently available on what could be the function of GluD1 in these cells. However, both glutamate and GABA ionotropic receptor subunits and functional receptor channels are expressed very early during brain development in proliferating neuroepithelial cells and are considered important for events such as precursor proliferation, migration, differentiation, and survival.^{61–63} It is thus possible that an alteration of GluD1 levels in precursor cells might influence one of these processes and result in alteration of subsequent brain development.

Apart from the six common dysregulated genes, independent analysis of expression profiling results for the two *CDKL5*-mutated clones identified more than 300 clone-specific genes. The easiest explanation for this very limited overlap is the presence of different *CDKL5* mutations that might have different consequences on protein functionality: the female patient has a truncating mutation (p.Gln347Ter) that leads to a protein lacking the domains responsible for the interaction with MeCP2 and DNMT1 and the nuclear export signal, whereas the male patient has a missense change (p.Thr288Ile) in an highly conserved amino acid inside the catalytic kinase domain

that might result in a protein with altered kinase activity.³⁷ This scenario is consistent with the phenotypic differences observed between the two patients. In fact, the female patient has been diagnosed as having an early-onset seizures variant of RTT, whereas the male has X-linked epileptic encephalopathy. Although we are conscious that comparing cells from patients with different phenotypes might reduce the number of common genes identified, we selected this strategy as it might lead to the identification of those genes that represent the basal targets of *CDKL5*. In support of our hypothesis, a similar mutation-specific effect has also been reported by Nectoux et al⁴⁶ in *CDKL5*-mutated fibroblasts. Finally, we cannot exclude that some of the clone-specific alterations might be a nonspecific consequence of the integration site of reprogramming virus rather than a consequence of *CDKL5* absence.

The finding that GluD1 expression is altered in the presence of a mutation in *MECP2* or *CDKL5* appears particularly intriguing as mutations in GluD1 presynaptic partner are associated with Pitt-Hopkins-like syndrome 1 (OMIM #610042) that shares phenotypic features with RTT.^{64,65} The other gene mutated in this syndrome is *CNTNAP2* (also known as *NRXN4*), another member of Neurexin gene family. Data recently obtained from our group indicate that *CNTNAP2* might be involved in the modulation of the phenotype arising from mutations in *MECP2*.⁶⁶ In light of these results, it seems likely that all these genes act on the regulation of common processes and thus the alteration of one or more of them results in overlapping phenotypic outcomes. If this is the case, we would expect that alterations in *GRID1* might also cause a neurological phenotype. Indeed, linkage and association studies have established *GRID1* as a strong candidate gene for schizophrenia, major depressive disorder, and autism spectrum disorders (ASD).^{67–70} Moreover, *GRID1*-null mice present aberrant social and emotional behaviours, further stressing the importance of this gene for normal cognition.⁷¹

In conclusion, our results demonstrate that *GRID1* gene expression is downregulated in both *MECP2*- and *CDKL5*-mutant iPSC cells and upregulated in neuronal precursors and mature neurons. Our data provide the first potential functional link between *MECP2* and *CDKL5* genes. These data provide novel insights into disease pathophysiology and identify possible new targets for therapeutic treatments of RTT.

CONFLICT OF INTEREST

The authors declare no conflict of interest.

ACKNOWLEDGEMENTS

We are grateful to A Bartolini for help with culture maintenance and differentiation. The work was partially funded by Telethon grant (GGP11110A), by Italian Health Ministry 'Ricerca finalizzata 2008' (RF-TOS-2008_1225570) and 'Ricerca finalizzata 2010' (RF-2010-2317597) grants, and by AIRETT (Associazione Italiana Rett) 2011 grant to AR. The 'Cell lines and DNA bank of Rett Syndrome, X-linked mental retardation and other genetic diseases', member of the Telethon Network of Genetic Biobanks (project no. GTB12001), funded by Telethon Italy, and of the EuroBioBank network, provided us with specimens.

- Rett A: Ueber ein eigenartiges hirnatrophisches Syndrom bei Hyperammonaemie im Kindesalter. *Wien Med Wochenschrift* 1966; **116**: 723–726.
- Chahrouh M, Zoghbi HY: The story of Rett syndrome: from clinic to neurobiology. *Neuron* 2007; **56**: 422–437.
- Hagberg B, Aicardi J, Dias K, Ramos O: A progressive syndrome of autism, dementia, ataxia, and loss of purposeful hand use in girls: Rett's syndrome: report of 35 cases. *Ann Neurol* 1983; **14**: 471–479.

- Williamson SL, Christodoulou J: Rett syndrome: new clinical and molecular insights. *Eur J Hum Genet* 2006; **14**: 896–903.
- Arturo R: Early-onset seizure variant of Rett syndrome: definition of the clinical diagnostic criteria. *Brain Dev* 2010; **32**: 17–24.
- Neul J, Kaufmann W, Glaze D et al: Rett syndrome: revised diagnostic criteria and nomenclature. *Ann Neurol* 2010; **68**: 944–950.
- Amir RE, Zoghbi HY: Rett syndrome: methyl-CpG-binding protein 2 mutations and phenotype-genotype correlations. *Am J Med Genet* 2000; **97**: 147–152.
- LaSalle JM, Goldstine J, Balmer D, Greco CM: Quantitative localization of heterogeneous methyl-CpG-binding protein 2 (MeCP2) expression phenotypes in normal and Rett syndrome brain by laser scanning cytometry. *Hum Mol Genet* 2001; **10**: 1729–1740.
- Shahbazian MD, Antalffy B, Armstrong DL, Zoghbi HY: Insight into Rett syndrome: MeCP2 dosage alters axonal transport through the Huntingtin/Hap1 pathway. *Hum Mol Genet* 2002; **11**: 115–124.
- Jordan C, Li HH, Kwan HC, Francke U: Cerebellar gene expression profiles of mouse models for Rett syndrome reveal novel MeCP2 targets. *BMC Med Genet* 2007; **8**: 36.
- Tudor M, Akbarian S, Chen RZ, Jaenisch R: Transcriptional profiling of a mouse model for Rett syndrome reveals subtle transcriptional changes in the brain. *Proc Natl Acad Sci USA* 2002; **99**: 15536–15541.
- Roux JC, Zala D, Panayotis N, Borges-Correia A, Saudou F, Villard L: Modification of MeCP2 dosage alters axonal transport through the Huntingtin/Hap1 pathway. *Neurobiol Dis* 2012; **45**: 786–795.
- Belichenko PV, Oldfors A, Hagberg B, Dahlstrom A: Rett syndrome: 3-D confocal microscopy of cortical pyramidal dendrites and afferents. *Neuroreport* 1994; **5**: 1509–1513.
- Colantuoni C, Jeon OH, Hyder K et al: Gene expression profiling in postmortem Rett Syndrome brain: differential gene expression and patient classification. *Neurobiol Dis* 2001; **8**: 847–865.
- Blue ME, Naidu S, Johnston MV: Altered development of glutamate and GABA receptors in the basal ganglia of girls with Rett syndrome. *Exp Neurol* 1999; **156**: 345–352.
- Johnston MV, Blue ME, Naidu S: Rett syndrome and neuronal development. *J Child Neurol* 2005; **20**: 759–763.
- Evans J, Archer H, Colley J et al: Early onset seizures and Rett-like features associated with mutations in *CDKL5*. *Eur J Hum Genet* 2005; **13**: 1113–1120.
- Scala E, Ariani F, Mari F et al: *CDKL5/STK9* is mutated in Rett syndrome variant with infantile spasms. *J Med Genet* 2005; **42**: 103–107.
- Montini E, Andolfi G, Caruso A et al: Identification and characterization of a novel serine-threonine kinase gene from the Xp22 region. *Genomics* 1998; **51**: 427–433.
- Lin C, Franco B, Rosner MR: *CDKL5/STK9* kinase inactivation is associated with neuronal developmental disorders. *Hum Mol Genet* 2005; **14**: 3775–3786.
- Rusconi L, Salvatoni L, Giudici L et al: *CDKL5* expression is modulated during neuronal development and its subcellular distribution is tightly regulated by the C-terminal tail. *J Biol Chem* 2008; **283**: 30101–30111.
- Rusconi L, Kilstrup-Nielsen C, Landsberger N: Extrasynaptic N-methyl-D-aspartate (NMDA) receptor stimulation induces cytoplasmic translocation of the *CDKL5* kinase and its proteasomal degradation. *J Biol Chem* 2011; **286**: 36550–36558.
- Ricciardi S, Ungaro F, Hambrock M et al: *CDKL5* ensures excitatory synapse stability by reinforcing NGL-1-PSD95 interaction in the postsynaptic compartment and is impaired in patient iPSC-derived neurons. *Nat Cell Biol* 2012; **14**: 911–923.
- Kameshita I, Sekiguchi M, Hamasaki D et al: Cyclin-dependent kinase-like 5 binds and phosphorylates DNA methyltransferase 1. *Biochem Biophys Res Commun* 2008; **377**: 1162–1167.
- Nectoux J, Fichou Y, Rosas-Vargas H et al: Cell cloning-based transcriptome analysis in Rett patients: relevance to the pathogenesis of Rett syndrome of new human MeCP2 target genes. *J Cell Mol Med* 2010; **14**: 1962–1974.
- Mari F, Azimonti S, Bertani I et al: *CDKL5* belongs to the same molecular pathway of MeCP2 and it is responsible for the early-onset seizure variant of Rett syndrome. *Hum Mol Genet* 2005; **14**: 1935–1946.
- Bertani I, Rusconi L, Bolognese F et al: Functional consequences of mutations in *CDKL5*, an X-linked gene involved in infantile spasms and mental retardation. *J Biol Chem* 2006; **281**: 32048–32056.
- Carouge D, Host L, Aunis D, Zwiller J, Anglard P: *CDKL5* is a brain MeCP2 target gene regulated by DNA methylation. *Neurobiol Dis* 2010; **38**: 414–424.
- Takahashi K, Tanabe K, Ohnuki M et al: Induction of pluripotent stem cells from adult human fibroblasts by defined factors. *Cell* 2007; **131**: 861–872.
- Lowry WE, Richter L: Signaling in adult stem cells. *Front Biosci* 2007; **12**: 3911–3927.
- Marchetto MC, Brennand KJ, Boyer LF, Gage FH: Induced pluripotent stem cells (iPSCs) and neurological disease modeling: progress and promises. *Hum Mol Genet* 2011; **20**: R109–R115.
- Urbach A, Bar-Nur O, Daley GQ, Benvenisty N: Differential modeling of fragile X syndrome by human embryonic stem cells and induced pluripotent stem cells. *Cell Stem Cell* 2010; **6**: 407–411.
- Chamberlain SJ, Chen PF, Ng KY et al: Induced pluripotent stem cell models of the genomic imprinting disorders Angelman and Prader-Willi syndromes. *Proc Natl Acad Sci U S A* 2010; **107**: 17668–17673.
- Marchetto MC, Carrouge C, Acab A et al: A model for neural development and treatment of Rett syndrome using human induced pluripotent stem cells. *Cell* 2010; **143**: 527–539.

- 35 Cheung AY, Horvath LM, Grafodatskaya D *et al*: Isolation of MECP2-null Rett Syndrome patient hiPS cells and isogenic controls through X-chromosome inactivation. *Hum Mol Genet* 2011; **20**: 2103–2115.
- 36 Ananiev G, Williams EC, Li H, Chang Q: Isogenic pairs of wild type and mutant induced pluripotent stem cell (iPSC) lines from Rett syndrome patients as *in vitro* disease model. *PLoS One* 2011; **6**: e25255.
- 37 Amenduni M, De Filippis R, Cheung AY *et al*: iPS cells to model CDKL5-related disorders. *Eur J Hum Genet* 2011; **19**: 1246–1255.
- 38 Hotta A, Cheung AY, Farra N *et al*: Isolation of human iPS cells using EOS lentiviral vectors to select for pluripotency. *Nat Methods* 2009; **6**: 370–376.
- 39 Yuan SH, Martin J, Elia J *et al*: Cell-surface marker signatures for the isolation of neural stem cells, glia and neurons derived from human pluripotent stem cells. *PLoS One* 2011; **6**: e17540.
- 40 Safieddine S, Wenthold RJ: The glutamate receptor subunit delta1 is highly expressed in hair cells of the auditory and vestibular systems. *J Neurosci* 1997; **17**: 7523–7531.
- 41 Yasui DH, Peddada S, Bieda MC *et al*: Integrated epigenomic analyses of neuronal MeCP2 reveal a role for long-range interaction with active genes. *Proc Natl Acad Sci USA* 2007; **104**: 19416–19421.
- 42 Pennartz S, Belvindrah R, Tomiuk S *et al*: Purification of neuronal precursors from the adult mouse brain: comprehensive gene expression analysis provides new insights into the control of cell migration, differentiation, and homeostasis. *Mol Cell Neurosci* 2004; **25**: 692–706.
- 43 Chahrouh M, Jung SY, Shaw C *et al*: MeCP2, a key contributor to neurological disease, activates and represses transcription. *Science* 2008; **320**: 1224–1229.
- 44 Chen Q, Zhu YC, Yu J *et al*: CDKL5, a protein associated with Rett syndrome, regulates neuronal morphogenesis via Rac1 signaling. *J Neurosci* 2010; **30**: 12777–12786.
- 45 Ricciardi S, Kilstrup-Nielsen C, Bienvenu T, Jacqueline A, Landsberger N, Broccoli V: CDKL5 influences RNA splicing activity by its association to the nuclear speckle molecular machinery. *Hum Mol Genet* 2009; **18**: 4590–4602.
- 46 Nectoux J, Fichou Y, Cagnard N *et al*: Cell cloning-based transcriptome analysis in cyclin-dependent kinase-like 5 mutation patients with severe epileptic encephalopathy. *J Mol Med (Berl)* 2011; **89**: 193–202.
- 47 Traynor J, Agarwal P, Lazzeroni L, Francke U: Gene expression patterns vary in clonal cell cultures from Rett syndrome females with eight different MECP2 mutations. *BMC Med Genet* 2002; **3**: 12.
- 48 Yamazaki M, Araki K, Shibata A, Mishina M: Molecular cloning of a cDNA encoding a novel member of the mouse glutamate receptor channel family. *Biochem Biophys Res Commun* 1992; **183**: 886–892.
- 49 Lomeli H, Sprengel R, Laurie DJ *et al*: The rat delta-1 and delta-2 subunits extend the excitatory amino acid receptor family. *FEBS Lett* 1993; **315**: 318–322.
- 50 Mayat E, Petralia RS, Wang YX, Wenthold RJ: Immunoprecipitation, immunoblotting, and immunocytochemistry studies suggest that glutamate receptor delta subunits form novel postsynaptic receptor complexes. *J Neurosci* 1995; **15**: 2533–2546.
- 51 Yasumura M, Yoshida T, Lee SJ, Uemura T, Joo JY, Mishina M: Glutamate receptor delta1 induces preferentially inhibitory presynaptic differentiation of cortical neurons by interacting with neurexins through cerebellin precursor protein subtypes. *J Neurochem* 2012; **121**: 705–716.
- 52 Kuroyanagi T, Yokoyama M, Hirano T: Postsynaptic glutamate receptor delta family contributes to presynaptic terminal differentiation and establishment of synaptic transmission. *Proc Natl Acad Sci USA* 2009; **106**: 4912–4916.
- 53 Ryu K, Yokoyama M, Yamashita M, Hirano T: Induction of excitatory and inhibitory presynaptic differentiation by GluD1. *Biochem Biophys Res Commun* 2012; **417**: 157–161.
- 54 Belichenko PV, Wright EE, Belichenko NP *et al*: Widespread changes in dendritic and axonal morphology in MeCP2-mutant mouse models of Rett syndrome: evidence for disruption of neuronal networks. *J Comp Neurol* 2009; **514**: 240–258.
- 55 Chapleau CA, Calfa GD, Lane MC *et al*: Dendritic spine pathologies in hippocampal pyramidal neurons from Rett syndrome brain and after expression of Rett-associated MECP2 mutations. *Neurobiol Dis* 2009; **35**: 219–233.
- 56 Chao HT, Zoghbi HY, Rosenmund C: MeCP2 controls excitatory synaptic strength by regulating glutamatergic synapse number. *Neuron* 2007; **56**: 58–65.
- 57 Gatto CL, Brodie K: Genetic controls balancing excitatory and inhibitory synaptogenesis in neurodevelopmental disorder models. *Front Synaptic Neurosci* 2010; **2**: 4.
- 58 Dani VS, Chang Q, Maffei A, Turrigiano GG, Jaenisch R, Nelson SB: Reduced cortical activity due to a shift in the balance between excitation and inhibition in a mouse model of Rett syndrome. *Proc Natl Acad Sci USA* 2005; **102**: 12560–12565.
- 59 Medrihan L, Tantalaki E, Aramuni G *et al*: Early defects of GABAergic synapses in the brain stem of a MeCP2 mouse model of Rett syndrome. *J Neurophysiol* 2008; **99**: 112–121.
- 60 Zhang ZW, Zak JD, Liu H: MeCP2 is required for normal development of GABAergic circuits in the thalamus. *J Neurophysiol* 2010; **103**: 2470–2481.
- 61 Nguyen L, Rigo JM, Rocher V *et al*: Neurotransmitters as early signals for central nervous system development. *Cell Tissue Res* 2001; **305**: 187–202.
- 62 Manent JB, Represa A: Neurotransmitters and brain maturation: early paracrine actions of GABA and glutamate modulate neuronal migration. *Neuroscientist* 2007; **13**: 268–279.
- 63 Aronica E, Crino PB: Inflammation in epilepsy: clinical observations. *Epilepsia* 2011; **52**(Suppl 3): 26–32.
- 64 Zweier C, de Jong EK, Zweier M *et al*: CNTNAP2 and NRXN1 are mutated in autosomal-recessive Pitt-Hopkins-like mental retardation and determine the level of a common synaptic protein in *Drosophila*. *Am J Hum Genet* 2009; **85**: 655–666.
- 65 Marangi G, Ricciardi S, Orteschi D *et al*: Proposal of a clinical score for the molecular test for Pitt-Hopkins syndrome. *Am J Med Genet A* 2012; **158A**: 1604–1611.
- 66 Grillo E, Lo Rizzo C, Bianciardi L *et al*: Revealing the complexity of a monogenic disease: Rett syndrome exome sequencing. *PLoS One* 2013; **8**: e56599.
- 67 Fallin MD, Lasseter VK, Avramopoulos D *et al*: Bipolar I disorder and schizophrenia: a 440-single-nucleotide polymorphism screen of 64 candidate genes among Ashkenazi Jewish case-parent trios. *Am J Hum Genet* 2005; **77**: 918–936.
- 68 Glessner JT, Hakonarson H: Common variants in polygenic schizophrenia. *Genome Biol* 2009; **10**: 236.
- 69 Guo SZ, Huang K, Shi YY *et al*: A case-control association study between the GRID1 gene and schizophrenia in the Chinese Northern Han population. *Schizophr Res* 2007; **93**: 385–390.
- 70 Treutlein J, Muhleisen TW, Frank J *et al*: Dissection of phenotype reveals possible association between schizophrenia and Glutamate Receptor Delta 1 (GRID1) gene promoter. *Schizophr Res* 2009; **111**: 123–130.
- 71 Yadav R, Gupta SC, Hillman BG, Bhatt JM, Stairs DJ, Dravid SM: Deletion of glutamate delta-1 receptor in mouse leads to aberrant emotional and social behaviors. *PLoS One* 2012; **7**: e32969.

Supplementary Information accompanies this paper on European Journal of Human Genetics website (<http://www.nature.com/ejhg>)