

NF-YB1-regulated expression of sucrose transporters in aleurone facilitates sugar loading to rice endosperm

Cell Research (2016) 26:384–388. doi:10.1038/cr.2015.116; published online 25 September 2015

Dear Editor,

Cereal endosperms, which consist of an outer aleurone layer and an inner starchy endosperm, provide over 70% staple food for human [www.fao.org]. Rice endosperm development occurs in the caryopsis of a grain. During the grain filling stage, sucrose produced in photosynthetic leaves is transported to grains via the phloem [1, 2]. It has been proposed that sucrose, upon arrival in the caryopsis through the phloem located at the dorsal vascular bundle, is partially hydrolyzed by cell wall invertases (CINs) into glucose and fructose [3, 4]. Since endosperm is symplastically isolated from maternal tissues, it is assumed that these sugars are delivered to the endosperm actively through an apoplastic pathway by sugar transporters located in aleurone [5, 6]. However, the exact role of aleurone in regulating sugar transport remains unknown.

In this study, microarray analyses were performed in rice (*Oryza sativa* L., Zhonghua 11) to identify transcription factors (TFs) differentially expressed between starchy endosperm and aleurone in caryopses collected at 11 to 14 days after pollination (DAP), a stage when grain filling is active. Out of 949 TFs that were differentially expressed, 505 were up-regulated in the aleurone. Real-time PCR was performed to examine their expression patterns further. *Os02g0725900* encoding Nuclear Factor Y B1 (NF-YB1) was shown to be expressed in caryopses from 4 to 21 DAP (c4 to c21), similar to the result published recently [7], while no expression was detected in vegetative tissues examined (Figure 1A). Within caryopses, abundant *NF-YB1* expression was detected in mixed aleurone-testa sample (a+t), but not in starchy endosperm (se; Figure 1A).

NF-YB1 belongs to NF-Y family TFs that are conserved in all eukaryotic organisms. NF-Ys usually form trimers with one NF-YA, one NF-YB and one NF-YC, and bind to CCAAT-containing regulatory elements [8]. Ten *NF-YAs*, eleven *NF-YBs* and seven *NF-YCs* are present in the rice genome, which could potentially produce over 700 heterotrimeric complexes [8].

In situ hybridization showed that, during caryopsis development, expression of *NF-YB1* was first detected at the

periphery of coenocytic endosperms at 4 DAP, and confined to dorsal aleurone (adjacent to the primary vascular bundle and nucellar projection) at 5 DAP, and then expanded to the whole aleurone at 7, 9 and 11 DAP (stronger at the dorsal side). No expression was observed in maternal tissues such as the dorsal vascular bundle and the nucellar projection (Figure 1B and Supplementary information, Figure S1A). The expression correlated with the rapid increase of fresh caryopsis weight during this period (Supplementary information, Figure S1B). GUS staining in transgenic plants carrying 3 018 base pairs (bp) of *NF-YB1* 5' upstream sequence fused to β -*Glucuronidase* (*GUS*) confirmed the expression pattern, and revealed no *GUS* expression in any other tissues examined (Supplementary information, Figure S1C). These results together suggest *NF-YB1* is specifically expressed in aleurone.

Two CRISPR-Cas9 constructs expressing guide RNAs targeting different regions of the second exon of *NF-YB1* were made and used to transform into rice (Zhonghua 11). Sequencing of PCR-amplified *NF-YB1* genomic DNA from transgenic plants allowed us to identify two knockout mutants: *nfyb1-1* with an adenine insertion and *nfyb1-2* with a thymine insertion into the second exon (Figure 1C and Supplementary information, Figure S2A), predicted to produce truncated polypeptides with only 16 and 34 amino acids (AA) identical to NF-YB1 in *nfyb1-1* and *nfyb1-2*, respectively (Supplementary information, Figure S2B). Although no visible phenotype was observed during vegetative growth, grains produced from homozygous *nfyb1-1* and *nfyb1-2* plants showed a chalky endosperm phenotype, suggesting a defect in grain filling (Figure 1D). Additionally, an RNA interference (RNAi) construct with a 350-bp fragment targeting the second exon of *NF-YB1*, expressed under the control of maize *Ubiquitin 1* promoter, was made and transformed into rice (Zhonghua 11). Caryopses excised from 3 independent transgenic lines showed reduced *NF-YB1* expression (Supplementary information, Figure S2C) and a similar chalky endosperm phenotype as *nfyb1-1* and *nfyb1-2* (Supplementary information, Figure S2D). These data together suggest that *NF-YB1* plays an important role in rice grain filling.

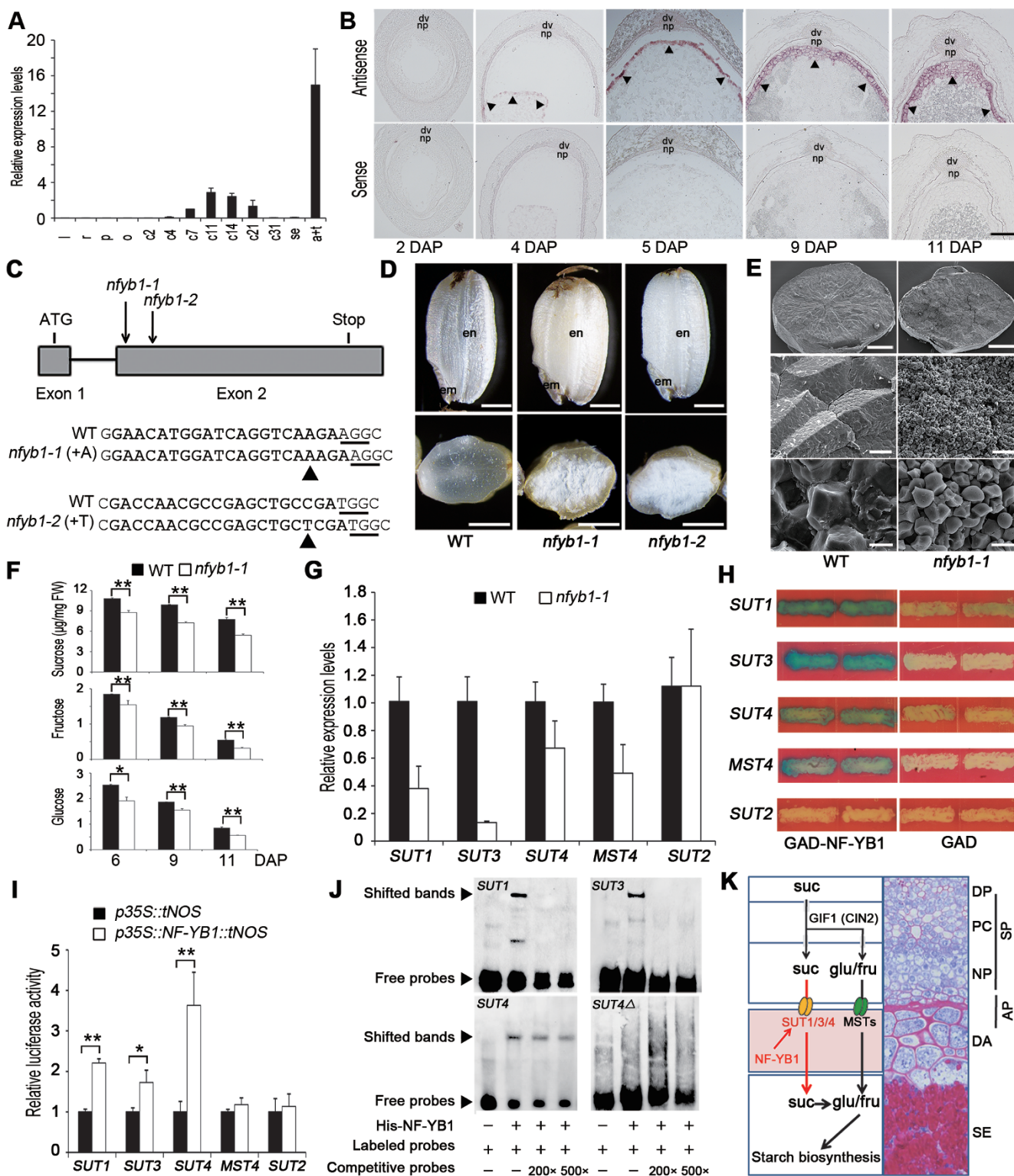


Figure 1 NF-YB1-regulated expression of three sucrose transporters facilitates grain filling in rice. **(A)** Real-time PCR analysis showing that *NF-YB1* is expressed in caryopses at 4, 7, 11, 14 and 21 DAP; and in caryopses collected at 11 DAP, *NF-YB1* is highly expressed in mixed aleurone and testa tissues. l, leaves; r, roots; p, panicles; o, ovaries; c2 to c31, caryopses collected at 2 to 31 DAP; se and a+t, starchy endosperm and mixed aleurone and testa samples collected at 11 DAP, respectively. Data are shown as means \pm SD ($n = 3$). **(B)** *In situ* hybridization in sectioned caryopses collected at 2, 4, 5, 9 and 11 DAP using antisense (upper panel) and sense probes (lower panel), showing that *NF-YB1* is strongly expressed in aleurone

Since *nfyb1-1* and *nfyb1-2* showed indistinguishable phenotype, *nfyb1-1* was thus used in subsequent experiments. The mature *nfyb1-1* caryopsis showed 18% reduction in dry weight (Supplementary information, Figure S2E). Scanning electron microscopy examinations revealed that endosperms in *nfyb1-1* carried small and loosely packed starch granules, which differed markedly from the large and tightly packed starch granules in the wildtype (WT; Figure 1E). The average length of *nfyb1-1* starch granules along the long axes was $4.4 \pm 0.6 \mu\text{m}$, as compared with $7.8 \pm 1.0 \mu\text{m}$ in the WT (Supplementary information, Figure S2F). Gas chromatography triple quadrupole mass spectrometry (GC-QQQ-MS/MS) analyses showed that contents of sucrose, fructose and glucose in *nfyb1-1* caryopses collected at 6, 9 and 11 DAP were significantly reduced as compared to those in the WT (Figure 1F). These data suggest that the chalky endosperm phenotype in *nfyb1-1* might be caused by compromised sugar delivery.

We then examined expression patterns of genes involved in sugar loading in *nfyb1-1*. All five *Sucrose Transporters* (*SUTs*, 1 to 5) in the rice genome, *CIN2* and *Monosaccharide Transporter 4* (*MST4*) are known to be expressed at different stages of rice caryopses [9, 4, 10]. Real-time PCR performed in caryopses collected at 5 DAP showed that levels of *SUT1*, *SUT3*, *SUT4* and *MST4* expression were re-

duced in *nfyb1-1*, while no evident reduction was observed for *SUT2* (Figure 1G), suggesting that *SUT1*, *SUT3*, *SUT4* and *MST4* may be regulated by NF-YB1.

To address if NF-YB1 can bind to regulatory elements of these sugar transporter genes, yeast one-hybrid experiment was performed using NF-YB1 fused with GAL4 transcriptional activation domain as prey, and 5' upstream sequences of *SUT1*, *SUT3*, *SUT4*, *MST4* or *SUT2* fused to *LacZ* as baits. After co-transformation of the prey with individual baits into yeast, we observed that NF-YB1 is able to activate *LacZ* expression when *SUT1*, *SUT3*, *SUT4* or *MST4* 5' sequences were used, while no activation was detected for *SUT2* (Figure 1H).

To further address if NF-YB1 is able to activate expression of these sugar transporters in plants, luciferase (*LUC*) assay was performed *in vitro* using protoplasts isolated from etiolated rice seedlings by co-transformation of *p35S::NF-YB1::tNOS* with either *pSUT1::LUC*, *pSUT3::LUC*, *pSUT4::LUC*, *pMST4::LUC* or *pSUT2::LUC*. As showed in Figure 1I, significantly elevated *LUC* activities were detected when *pSUT1::LUC*, *pSUT3::LUC* and *pSUT4::LUC* were used, while no significant elevation was observed for *pMST4::LUC* and *pSUT2::LUC*, indicating *MST4* and *SUT2* might not be direct targets of NF-YB1.

Several putative CCAAT boxes were identified in 5'

(arrowheads), but not in maternal tissues, or in starchy endosperm. dv, dorsal vascular bundle; np, nucellar projection. Bar = 100 μm . **(C)** *nfyb1-1* and *nfyb1-2* knockout mutants generated by CRISPR-Cas9. Upper panel, a gene model of *NF-YB1* to show positions of single-nucleotide insertions in *nfyb1-1* and *nfyb1-2*. Lower panel, mutation sites in *nfyb1-1* and *nfyb1-2*, as compared to WT sequences. Sequence in bold, target sites; underlined, protospacer-adjacent motif sequences (PAMs). Arrowheads indicate inserted single nucleotides. **(D)** Mature grains of *nfyb1-1* and *nfyb1-2*, showing the chalky endosperm phenotype as compared to the semi-transparent endosperm in WT. Upper panel, side views of intact caryopses; lower panel, surface views of cracked caryopses. en, endosperm; em, embryo. Bars = 1 mm. **(E)** Scanning electron microscopy images of cracked mature WT and *nfyb1-1* caryopses at different magnifications, showing smaller and loosely packed starch grains in *nfyb1-1*, as compared to large and tightly packed ones in the WT. Scale bars: 500 μm (top), 25 μm (middle), 5 μm (bottom). **(F)** Sucrose, fructose, and glucose contents (μg in mg fresh weight) in developing caryopses collected at 6, 9 and 11 DAP, showing significantly reduced accumulation of all these sugars in *nfyb1-1*, as compared to that in the WT caryopses at the same stage. Data shown as means \pm SD ($n = 3$; * $P < 0.05$, ** $P < 0.01$, based on Student's *t*-test). **(G)** Expression levels of *SUT1*, *SUT3*, *SUT4* and *MST4* were reduced in *nfyb1-1* caryopses collected at 5 DAP, as compared to those in WT. Expression levels of these genes in the WT were normalized to 1. No significant reduction was observed for *SUT2*. Data shown as means \pm SD ($n = 3$). **(H)** Yeast one-hybrid assay to show bindings of NF-YB1 to *SUT1*, *SUT3*, *SUT4* and *MST4* regulatory elements. NF-YB1 fused to GAL4 transcriptional activation domain (GAD-NF-YB1) was used as prey; 5' regulatory sequences of *SUT1*, *SUT3*, *SUT4*, *MST4* and *SUT2* fused to *LacZ* as baits. Yeast cells co-transformed with GAD-NF-YB1 (left) or empty vector (GAD, right) and one of these baits were grown on a synthetic dropout medium without tryptophan and uracil. Note no activation was detected for *SUT2*. **(I)** *LUC* assays performed in rice protoplasts to show NF-YB1 activated *SUT1*, *SUT3* and *SUT4* promoters. *LUC* activities in protoplasts co-transfected with *p35S::tNOS* and reporter constructs (*pSUT1::LUC*, *pSUT3::LUC*, *pSUT4::LUC*, *pMST4::LUC* or *pSUT2::LUC*) were normalized to 1, and *LUC* activities in protoplasts co-transfected with *p35S::NF-YB1::tNOS* and these reporter constructs were relative to this value. Data shown as means \pm SD ($n = 3$; * $P < 0.05$, ** $P < 0.01$, based on Student's *t*-test). **(J)** EMSA assays to show His-tagged NF-YB1 bound directly to CCAAT box-containing 5' upstream sequences of *SUT1*, *SUT3* and *SUT4*. *SUT4 Δ* , *SUT4* with a mutated CCAAT box was used as a negative control. **(K)** A working model, illustrating the role of *NF-YB1* in regulating sucrose loading to developing rice endosperms by activating three sucrose transporters in aleurone, while glucose and fructose are loaded to endosperms through an independently regulated route. DP, dorsal phloem; PC, parenchyma cells in the vascular bundle; NP, nucellar projection; DA, dorsal aleurone; SE, starchy endosperm; SP, symplastic; AP, apoplastic; suc, sucrose; glu, glucose; fru, fructose.

upstream sequences of *SUT1*, *SUT3* and *SUT4* (Supplementary information, Data S1). To elucidate if NF-YB1 is able to bind to these boxes, electrophoretic mobility shift assay (EMSA) was performed using His-NF-YB1 produced in *E. coli* (Supplementary information, Data S1). As shown in Figure 1J, bands with retarded migrations were observed when *SUT1*, *SUT3* or *SUT4* upstream sequences were incubated with His-NF-YB1. The bands disappeared (*SUT1* and *SUT3*) or became significantly weakened (*SUT4*) when excess competitive probes were added. These results together suggest that NF-YB1 is able to bind to CCAAT boxes of *SUT1*, *SUT3* and *SUT4*.

Previous studies have shown that *SUT1* is expressed in aleurone, dorsal vascular bundle, nucellar projection and nucellar epidermis [11], and *SUT4* in aleurone and the embryo [12]. *In situ* hybridization performed in this study showed that *SUT3* was expressed specifically in the dorsal aleurone. No expression was detected in maternal pericarp and testa tissues, nor in the starchy endosperm (Supplementary information, Figure S2G). Co-expression of *NF-YB1* with *SUT1*, *SUT3* and *SUT4* in aleurone is consistent with the possibility that they form part of a regulatory module.

In summary, the aleurone-specific *NF-YB1*, with stronger expression at the dorsal side, plays an important role in regulating rice grain filling through activating the expression of *SUT1*, *SUT3* and *SUT4*. It has been shown in several cereal crops that phloem in the dorsal vascular bundle, to which the dorsal aleurone and nucellar projection adjoin, is the primary route for sucrose delivery from leaves to developing endosperms [13, 14]. Current hypothesis suggests that sucrose is partially hydrolyzed to glucose and fructose by *CINs* expressed in the dorsal vascular bundle region, and move first symplastically through maternal phloem parenchyma and nucellar projection through plasmadesmata, and then apoplastically to the filial endosperm by sugar transporters located in aleurone transfer cells [2, 5, 6]. Results provided in this study showed that the expression of *SUT1*, *SUT3* and *SUT4* in rice aleurone is regulated in concert by NF-YB1. Knockout or down-regulation of *NF-YB1* led to defective grains with chalky endosperms. Similar grain-filling phenotype has been observed in rice when *CIN2/GIF1* or *SUT1* is mutated or down-regulated [4, 15]. We showed further using yeast one-hybrid, LUC assay and EMSA experiments that NF-YB1 binds specifically to 5' regulatory sequences of *SUT1*, *SUT3* and *SUT4*. As expected, expression of these genes was down-regulated in *nfyb1-1* caryopses. It is noted that *SUT1* and *SUT4* are expressed in a much broader pattern than *NF-YB1*. We reckon that the aleurone-specifically expressed NF-YB1 may form a trimeric complex with an unknown NF-FA and NF-YC to regulate the expression of these three *SUTs* in aleurone, while the expression of these *SUTs* in other tissues could be regulated

by different NF-Y complexes, or other families of TFs. A model is thus proposed to illustrate the role of rice *NF-YB1* in regulating sucrose loading to the developing endosperm for starch biosynthesis through transcriptional activation of *SUT1*, *SUT3* and *SUT4* in aleurone (Figure 1K). This route may act in parallel with the glucose and fructose loadings that are mediated by *CINs* and *MSTs*. Further studies on this molecular module may deepen our understanding of cereal grain filling in general, and could potentially contribute to improving crop yield.

Acknowledgments

We thank Rongcheng Lin for providing yeast one-hybrid and LUC assay vectors, Zhen Xue for performing GC-QQQ-MS/MS analyses, and Wenhao Zhang for critical reading of the manuscript. This work was funded by the CAS-CSIRO Cooperation Research Program (GJHZ1406), 863 National High-Tech R&D Program of China (2012AA02A707) and the National Transgenic Science and Technology Program (2014ZX08009-003-005).

Ai-Ning Bai^{1,2}, Xiao-Duo Lu¹, Dong-Qi Li^{1,2},
Jin-Xin Liu¹, Chun-Ming Liu¹

¹Key Laboratory of Plant Molecular Physiology, Institute of Botany, Chinese Academy of Sciences, Nanxincun 20, Fragrant Hill, Beijing 100093, China; ²University of Chinese Academy of Sciences, 19A Yuquan Road, Beijing 100049, China

Correspondence: Chun-Ming Liu

Tel: 86-010-6283-6663

E-mail: cmliu@ibcas.ac.cn

References

- 1 Lucas WJ, Groover A, Lichtenberger R, et al. *J Integr Plant Biol* 2013; **55**:294-388.
- 2 Braun DM, Wang L, Ruan YL. *J Exp Bot* 2014; **65**:1713-1735.
- 3 Lim JD, Cho J, Park Y, et al. *Physiol Plant* 2006; **126**:572-584.
- 4 Wang ET, Wang JJ, Zhu XD, et al. *Nat Genet* 2008; **40**:1370-1374.
- 5 Patrick JW, Offler CE. *J Exp Bot* 2001; **52**:551-564.
- 6 Weschke W, Panitz R, Sauer N, et al. *Plant J* 2000; **21**:455-467.
- 7 Sun XC, Ling S, Lu ZH, et al. *Gene* 2014; **551**:214-221.
- 8 Petroni K, Kumimoto RW, Gnesutta N, et al. *Plant Cell* 2012; **24**:4777-4792.
- 9 Aoki N, Hirose T, Scofield GN, et al. *Plant Cell Physiol* 2003; **44**:223-232.
- 10 Wang YQ, Xu HL, Wei XL, et al. *Plant Mol Biol* 2007; **65**:439-451.
- 11 Furbank RT, Scofield GN, Hirose T, et al. *Aust J Plant Physiol* 2001; **28**:1187-1196.
- 12 Chung P, Hsiao HH, Chen HJ, et al. *Acta Physiol Plant* 2014; **36**:217-229.
- 13 Oparka KJ, Gates P. *Planta* 1981; **152**:388-396.
- 14 Radchuk V, Borisjuk L. *Front Plant Sci* 2014; **5**:510.
- 15 Scofield GN, Hirose T, Gaudron JA, et al. *Funct Plant Biol* 2002; **29**:815-826.

(Supplementary information is linked to the online version of the paper on the *Cell Research* website.)



This work is licensed under a Creative Commons Attribution-NonCommercial-NoDerivs 4.0 Unported License. The images or other third party material in this article are included in the article's Creative Commons license, unless indicated otherwise in the credit line; if the material is not included under the Creative Commons license, users will need to obtain permission from the license holder to reproduce the material. To view a copy of this license, visit <http://creativecommons.org/licenses/by-nc-nd/4.0/>