

Keywords: elderly; renal cell carcinoma; sorafenib; targeted therapies; tyrosine kinase inhibitors

Sorafenib tolerability in elderly patients with advanced renal cell carcinoma: results from a large pooled analysis

G Procopio^{*1}, J Bellmunt², J Dutcher³, S Bracarda⁴, J Knox⁵, A Brueckner⁶, I Molnar⁷, B Escudier⁸ and T E Hutson⁹

¹Department of Medical Oncology 1, Fondazione IRCCS 'Istituto Nazionale Tumori', Milan, Italy; ²Department of Solid Tumor Oncology (Genitourinary and Gastrointestinal), University Hospital del Mar-IMIM, Barcelona, Spain; ³St Luke's Roosevelt Hospital Center, Beth Israel Medical Center, Continuum Cancer Centers, New York, NY, USA; ⁴Department of Medical Oncology, Ospedale San Donato-USL8, Arezzo, Italy; ⁵Department of Medical Oncology and Hematology, Princess Margaret Hospital, Toronto, ON, Canada; ⁶Bayer HealthCare, Leverkusen, Germany; ⁷Bayer HealthCare Pharmaceuticals Inc, Montville, NJ, USA; ⁸Department of Cancer Medicine, Institute of Gustave-Roussy, Villejuif, France and ⁹Texas Oncology at Baylor Charles A. Sammons Cancer Center, Dallas, TX, USA

Background: Elderly patients tend to be underrepresented in renal cell carcinoma (RCC) clinical trials. The Sorafenib RCC Integrated Database includes data from six clinical trials and two expanded-access studies evaluating sorafenib monotherapy in >4600 patients with RCC. Using this database, sorafenib tolerability and treatment patterns were analysed according to age group (<55, 55–<65, 65–<75, or ≥75 years).

Methods: Dosing patterns, and incidence, prevalence and cumulative incidence of drug-related adverse events (DRAEs) and fatal DRAEs were assessed.

Results: Overall, 4684 patients were evaluable (<55 years, $n=1126$; 55–<65, $n=1579$; 65–<75, $n=1382$; ≥75, $n=559$). Treatment patterns were generally similar across subgroups, although sorafenib treatment duration was ~30% shorter in the ≥75-years subgroup. There were no substantial differences in any-grade DRAEs with sorafenib between subgroups. Drug-related adverse events and dose modifications due to DRAEs tended to occur in months 0–3 and declined thereafter; there was no evidence of cumulative toxicity. Fatal DRAEs were rare (0.7% overall; 95% confidence interval, 0.5–1.0%).

Conclusion: Sorafenib was well tolerated regardless of age in a heterogeneous population of RCC patients.

The incidence of cancer and cancer-related mortality increases with age (Altekruse *et al*, 2011). For renal cell carcinoma (RCC), median age at diagnosis is ~64 years, with >25% of patients aged >75 years (based on data for the United States (Altekruse *et al*, 2011)). Outcomes appear to be worse in older patients; mortality related to RCC was seven-fold higher in nephrectomized patients aged ≥75 years vs those aged 50–75 years (Karakiewicz *et al*, 2008). Additionally, overall survival in RCC patients correlates negatively with the severity and number of

comorbidities (Berger *et al*, 2008); comorbidity prevalence increases with age (Coebergh *et al*, 1999). Despite these observations, older patients are generally underrepresented in clinical trials (Lewis *et al*, 2003; Surbone, 2011). A major reason for this seems to be strict exclusion criteria based on organ-system abnormalities and functional status limitations (Lewis *et al*, 2003). The advent of targeted therapies has revolutionized RCC treatment, but pivotal registration trials have tended to enrol small proportions of patients aged >65 years (Escudier *et al*,

*Correspondence: Dr G Procopio, E-mail: Giuseppe.Procopio@istitutotumori.mi.it

Received 20 July 2012; revised 8 November 2012; accepted 10 November 2012; published online 15 January 2013

© 2013 Cancer Research UK. All rights reserved 0007–0920/13



2007a,b; Hudes *et al*, 2007; Motzer *et al*, 2007, 2008; Rini *et al*, 2008, 2011; Sternberg *et al*, 2010). The consequence is a lack of evidence-based recommendations for the treatment of elderly patients with RCC.

Sorafenib is an antiangiogenic, antiproliferative vascular endothelial growth factor receptor tyrosine kinase inhibitor (VEGFR-TKI) first approved for treatment of advanced RCC (Escudier *et al*, 2007a, 2009a; Stadler *et al*, 2010; Beck *et al*, 2011). Age subgroup analyses suggest that sorafenib is well tolerated and effective across age groups, but the proportions of elderly patients have tended to be small, and not reflective of real-world patient populations (Eisen *et al*, 2008b; Bukowski *et al*, 2010; Stadler *et al*, 2010; Beck *et al*, 2011; Procopio, 2011). The Sorafenib-RCC (Sor-RCC) Integrated Database includes safety data from >4600 patients enrolled in eight company-sponsored sorafenib monotherapy clinical studies. The large number of patients in the database, >40% of whom are ≥ 65 years old, allowed a retrospective examination of baseline demographics, treatment patterns, and sorafenib tolerability within age subsets, with a particular focus on the oldest patients (≥ 75 years).

PATIENTS AND METHODS

Patients and database. Clinical data from patients with RCC treated with sorafenib monotherapy in company-sponsored trials were pooled into the Sor-RCC Integrated Database. Trial data were included if patients received only sorafenib monotherapy, and adverse events (AEs) were measured using National Cancer Institute Common Terminology Criteria for Adverse Events version 3.0. Eight Phase I, II, and III trials met these criteria ($n = 4684$; Supplementary Table 1): six were clinical development trials ($n = 1008$); two were part of the expanded-access programme ($n = 3676$) (Akaza *et al*, 2007; Escudier *et al*, 2007a, 2009b; Stadler *et al*, 2010; Beck *et al*, 2011; Tolcher *et al*, 2011). All studies have completed; some patients remain in follow-up. The present analysis includes data collected from November 2003 to January 2009.

The starting dose of sorafenib in all trials was 400 mg twice daily. In the first-line study of sorafenib vs interferon, the protocol allowed dose escalation to 600 mg twice daily in patients with disease progression. The 44 patients who received at least one dose at this level were included in the integrated database at both 400 and 600 mg twice daily. In all studies, the per protocol dose modification schedule, if required, was reduction to 400 mg once daily, followed by additional dose reduction to a single 400 mg dose every other day, if necessary.

Subgroup analyses. Analyses were conducted in patient subgroups defined by age at study entry: <55 years, 55–<65 years, 65–<75 years, and ≥ 75 years. Incidence of a drug-related AE (DRAE) was defined as the number of patients with a DRAE starting or worsening during treatment, or within 7 days after treatment end, divided by the number of patients at risk. Drug-related adverse event prevalence was defined as the total number of DRAEs in the population occurring (new or continuing) in a given time interval, divided by the number of patients at risk during that interval. Drug-related serious AEs (DRSAEs) were DRAEs that were life-threatening or that led to hospitalisation, death, persistent or significant disability, or birth defects.

Statistical analysis. Descriptive safety analyses (means, medians, ranges) and frequency tables were used to analyse baseline characteristics, incidence and prevalence of DRAEs and DRSAEs, and concurrent medications for the patients in each subpopulation.

RESULTS

Patients. The Sor-RCC Integrated Database includes individual data from 4684 patients enrolled in eight company-sponsored clinical trials and expanded-access programmes (Supplementary Table 1). Most patients (78%) were from the expanded-access programmes and received open-label sorafenib in community-based practice settings. Four age subgroups were defined: <55 years ($n = 1126$; 24%), 55–<65 years ($n = 1579$; 34%), 65–<75 years ($n = 1382$; 30%), and ≥ 75 years ($n = 559$; 12%). Although the ≥ 75 -year-old subgroup was proportionally the smallest, it is the largest RCC population of advanced age to be studied to date. Patients were predominantly male, with clear-cell histology and a pattern of metastases typical for advanced RCC (i.e., lung, liver, lymph nodes, and bone) (Table 1). The proportion of patients with brain metastases (2.1%) was low, consistent with such patients generally being excluded from clinical trials; in the expanded-access programmes, patients with stable brain metastases were allowed. The percentage of nephrectomized patients was slightly lower in patients aged ≥ 75 years (81%) than in the younger age subgroups (range 87–90%). The proportion of the oldest patients who had received cytokines was somewhat lower than in the other groups (36% vs 51–59%).

Clinical comorbidities tended to increase with age. For example, the proportion of patients aged <55 years with cardiovascular risk factors or diabetes mellitus was approximately half that in the other groups (Table 1). Similarly, the concomitant medications received suggested more cardiovascular comorbidities in the older age groups: use of anti-angiotensin agents, calcium-channel blockers, β -blockers, diuretics, and lipid-reducing agents in the youngest subgroup was approximately half that in the oldest patients (Supplementary Table 2).

Treatment duration. Treatment duration was similar among patients aged <55, 55–<65, and 65–<75 years (mean, 6.5–6.7 months; median, 4.0–4.2 months; Table 2). In the oldest patients, treatment duration (mean: 4.5 months; median: 3.1 months) was about 30% shorter than in the three younger subgroups. Sorafenib therapy continued for ≥ 12 months in a notable proportion of patients in each subgroup, including older patients: 15% of patients aged <55 years, 16% of patients 55–<65 years, 17% of patients 65–<75 years, and 8% of patients ≥ 75 years.

Safety

DRAE incidence. The incidence of DRAEs of any grade appeared to be constant or decreased slightly with age (Table 3). Grade 3/4 DRAE incidence increased modestly with age: 33% of the youngest patients experienced ≥ 1 grade 3/4 DRAE while on treatment compared with 41% of the oldest patients. The most common any-grade DRAEs were hand-foot skin reaction (HFSR), diarrhoea, rash/desquamation, alopecia, and fatigue; incidence did not differ markedly between age groups, with the possible exception of grade 3/4 fatigue in the ≥ 75 -year-old subgroup (Table 3). The incidence of treatment-emergent hypertension was low and predominantly grade 1/2.

DRAE prevalence. Changes in the safety profile of sorafenib over time (prevalence) were examined by assessing the occurrence of any DRAE (grades 1–4) in 3-month intervals (Figure 1). The percentage of patients experiencing any DRAE was fairly constant over time, and generally showed a similar distribution across the age groups (Figure 1A). The prevalence of any grade 4 DRAE was low and never exceeded 5% in any interval. Grade 3 DRAEs occurred most frequently in months 0–3; prevalence decreased thereafter with a concurrent trend for an increase in the prevalence of grade 1/2 DRAEs.

Table 1. Baseline characteristics by age

Characteristics	Total patient population (N = 4684)	Patients <55 years of age (n = 1126)	Patients 55–<65 years of age (n = 1579)	Patients 65–<75 years of age (n = 1382)	Patients ≥75 years of age (n = 559)
Male, %	70.8	72.0	74.0	68.7	65.8
Median age, years (range)	62 (13–100)	49 (13–54)	59 (55–64)	69 (65–74)	78 (75–100)
ECOG PS, %					
0	21.8	26.1	23.1	21.4	12.3
1	20.1	21.6	20.5	20.9	15.6
2	3.8	5.3	3.5	3.4	2.5
Missing ^a	54.3	47.0	53.0	54.3	69.6
Metastatic sites, %					
Bone	27.9	30.6	30.1	26.2	21.1
Brain	2.1	2.8	2.0	1.8	1.6
Liver	24.4	25.8	25.5	23.6	21.1
Lung	72.4	74.0	72.2	72.6	71.6
Lymph nodes	27.9	32.8	29.3	25.1	22.2
Histology subtypes, %					
Clear cell	82.2	79.7	83.7	84.4	79.6
Predominantly clear cell	15.6	18.5	14.3	13.2	19.5
Other	0.7	0.9	0.6	0.8	0.4
Prior treatment, %					
Nephrectomy	86.8	89.8	86.6	87.6	81.2
Cytokine	52.4	59.4	55.5	50.7	35.6
Antineoplastic agent	28.4	30.0	32.1	27.6	17.2
Medical history, %					
Hypertension ^b	48.0	28.2	46.5	59.5	63.5
Ischaemic coronary artery disorders	4.4	1.9	3.8	5.9	7.5
Anaemia ^c	10.5	10.6	10.7	10.3	11.1
Diabetes mellitus	15.1	8.7	15.9	19.0	16.5
High cholesterol ^d	14.5	7.5	14.3	18.7	18.6

Abbreviations: ECOG PS = Eastern Cooperative Oncology Group performance status; MedDRA = Medical Dictionary for Regulatory Activities; NEC = not elsewhere classified. MedDRA[®] is a registered trademark of the International Federation of Pharmaceutical Manufacturers and Associations (IFPMA).

^aPerformance status values were missing in a large number of patients because they were not captured in the expanded-access studies.

^bPer MedDRA terminology, vascular hypertensive disorders NEC.

^cPer MedDRA terminology, anaemia NEC.

^dPer MedDRA terminology, elevated cholesterol, elevated triglycerides, and hyperlipidaemias NEC.

The prevalence of the grade 3/4 DRAEs that had the highest incidence was examined in more detail (Figures 1B–F). Prevalence patterns for these DRAEs were broadly consistent with those for any DRAE. Grade 3 HFSR, and grade 3/4 rash/desquamation and fatigue tended to occur most frequently in the first 3 months and decreased in later intervals; this pattern was observed across the age subgroups. Compared with younger patients, a slightly higher proportion of patients aged ≥75 years exhibited grade 3/4 fatigue and a lower proportion exhibited grade 3 HFSR. Hypertension prevalence at each grade was fairly equal across age groups, although there was a slight trend towards increased grade 1/2 hypertension in patients aged <55 years. Diarrhoea prevalence followed a slightly different pattern to the other DRAEs. Grade 1/2 diarrhoea was least frequent in the first 3 months in all age groups, and tended to increase over time. Importantly, the prevalence of grade 3 diarrhoea was low throughout, and there were no instances of grade 4 diarrhoea.

DRSAE incidence and prevalence. The incidence and prevalence of DRSAEs followed a similar pattern to those for DRAEs (Supplementary Table 3). The overall incidence of DRSAEs increased somewhat with age, from 11.3% in the youngest group to 19.9% in the oldest. The incidence of any grade 3/4 DRSAE was slightly higher in the oldest group (14%) than in the younger groups (8–11%). The most common specific DRSAEs (incidence ≥0.5%) were hypertension, fatigue, HFSR, rash, and diarrhoea. The incidence of all grade DRSAEs exceeded 2% only for fatigue and rash, and only in the ≥75-year-old subgroup.

The prevalence of grade 3/4 DRSAEs was highest in the first 3 months of treatment, and then dropped by 50% or more later in treatment. Patients aged ≥75 years experienced somewhat higher levels of DRSAEs in the first 6 months than patients in the other groups.

There were 34 (0.7%; 95% CI, 0.5–1.0%) grade 5 DRAEs during the study; the overall incidence was broadly similar across age

Table 2. Sorafenib treatment by age

	Total population (N = 4684)	Patients <55 years (n = 1126)	Patients 55–<65 years (n = 1579)	Patients 65–<75 years (n = 1382)	Patients ≥75 years (n = 559)
Duration of therapy					
Mean, months	6.3	6.7	6.5	6.6	4.5
Median (range) ^a , months	3.9 (0–51.2)	4.2 (0–51.2)	4.0 (0–47.4)	4.0 (0–44.1)	3.1 (0–37.5)
Per 3- or 6-month interval, n (%)					
<3 months	1820 (38.9)	402 (35.7)	612 (38.8)	518 (37.5)	265 (47.7)
3–<6 months	1349 (28.8)	328 (29.1)	439 (27.8)	400 (28.9)	171 (30.6)
6–<12 months	808 (17.3)	224 (19.9)	275 (17.4)	226 (16.4)	80 (14.3)
12–<18 months	323 (6.9)	75 (6.7)	103 (6.5)	124 (9.0)	21 (3.8)
18–<24 months	224 (4.8)	53 (4.7)	97 (6.1)	56 (4.1)	17 (3.0)
≥24 months	160 (3.4)	44 (3.9)	53 (3.4)	58 (4.2)	5 (0.9)
Dosing					
Median, mg per day (range)	792 (55.2–1600)	797 (156–1121)	796 (55–1335)	768 (73–1600)	768 (167–1600)
Mean (s.d.)	676 (171.2)	694 (159.7)	688 (163.0)	660 (180.0)	650 (186.6)
Patients receiving ≥90% planned dose, n/n (%)	2515/4199 (59.9)	627/978 (64.1)	900/1417 (63.5)	687/1250 (55.0)	281/517 (54.4)
^a The mean dose of sorafenib was calculated for each patient, and the median of these means was calculated for each subgroup.					

Table 3. Incidence of DRAEs occurring in ≥10% of patients by age

Grade, % of patients	Total population (N = 4684)		Patients <55 years (n = 1126)		Patients 55–<65 years (n = 1579)		Patients 65–<75 years (n = 1382)		Patients ≥75 years (n = 559)	
	Any	3–4	Any	3–4	Any	3–4	Any	3–4	Any	3–4
Any DRAE	82.3	37.6	79.5	33.3	83.3	37.5	84.7	39.6	81.0	41.4
Hand-foot skin reaction	36.2	9.7	39.3	10.0	37.5	9.6	36.0	10.1	28.3	8.4
Diarrhoea	35.4	4.0	32.2	3.3	39.7	4.6	36.8	4.4	27.0	2.9
Rash/desquamation	30.2	4.3	30.6	4.1	30.2	3.6	30.6	5.0	29.3	5.0
Alopecia	21.5	<0.1	24.2	0.1	22.0	0	21.6	0	15.0	0.2
Fatigue	24.7	4.8	21.1	3.8	23.9	3.6	26.5	5.5	30.4	9.0
Nausea	13.7	1.2	16.3	1.3	13.4	1.3	12.5	0.9	12.0	1.4
Hypertension	17.4	5.0	15.9	3.6	18.6	5.4	14.5	5.9	13.2	5.2
Anorexia	14.8	1.4	13.2	1.2	13.4	1.2	16.4	1.7	18.6	2.0
Pruritus	9.2	0.4	10.7	0.5	9.7	0.3	8.4	0.3	6.8	0.4
Oral mucositis, clinical examination	9.6	0.8	10.4	0.7	8.9	1.1	10.1	0.6	9.3	0.9
Abbreviation: DRAEs = drug-related adverse events. National Cancer Institute Common Terminology Criteria for Adverse Events (CTCAE) version 3 and worst CTCAE grade.										

subgroups (0.4–1.0%; Table 4). Most events occurred within months 0–3 (Table 4). Grade 5 DRAEs occurring in ≥2 patients were haemorrhage/bleeding events (n = 6, bleeding sites differed between patients), renal failure (n = 5), cardiac ischaemia/infarction (n = 3), perforation of the colon (n = 2), and perforation of the small bowel (n = 2).

Dosing patterns. The median/mean daily dose of sorafenib was consistent across age groups. The proportion of patients receiving at least 90% of planned doses was slightly higher in patients aged <55 years or 55–<65 years than in those aged 65–<75 years or ≥75 years (Table 2).

The incidence of dose modifications (reductions or interruptions) due to any AE was also generally similar between age groups. In each age group, most patients (>50%) did not require any dose modification owing to AEs; the proportion of patients requiring

two or more dose modifications was low (20–23%; Figure 2A). Most patients (>98%) initiated treatment at the standard dose (400 mg twice daily; Figure 2B). Compared with younger patients, there was a trend for older patients to be dose interrupted or dose reduced to 400 mg once daily due to AEs (Figure 2B). For patients whose dose was reduced or interrupted, there was also a trend for older patients not to be re-escalated to full dose, compared with younger patients, with a concurrent trend for older patients to remain at 400 mg once daily (Figure 2B). The prevalence of dose modifications owing to DRAEs (Supplementary Figure 1) was generally consistent with the prevalence data for DRAEs (Figure 1). In the oldest patients, the prevalence of dose modifications owing to DRAEs tended to be higher than in younger patients; however, the relatively small number of patients in the oldest group after month 12 precludes meaningful conclusions.

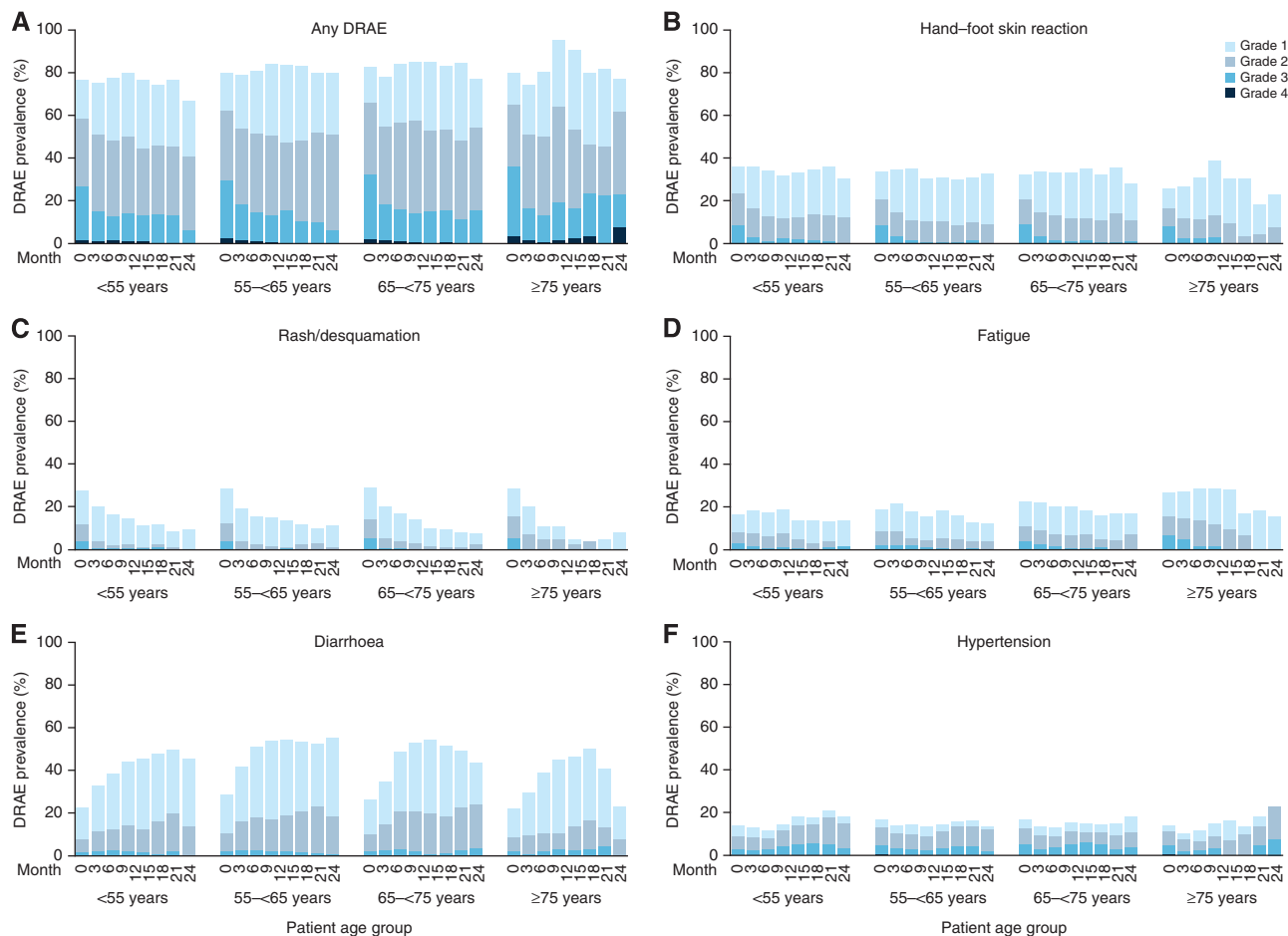


Figure 1. Prevalence of selected DRAEs by grade and time (3-month intervals over 24 months). (A) Any DRAE; (B–F) DRAEs with the highest grade 3/4 incidence: (B) HFSR, (C) rash/desquamation, (D) fatigue, (E) diarrhoea, and (F) hypertension. For the selected DRAEs, the prevalence of grade 4 DRAEs was ≤0.4% at any time point and in any age subgroup. No patient had grade 4 HFSR or diarrhoea. No patient had grade 4 fatigue, hypertension or rash/desquamation after months 0–3, except fatigue in one patient aged 55–<65 years and two patients aged 65–<75 years, during months 3–6; and in one patient aged 65–<75 years, during months 6–9. DRAE = drug-related adverse event; HFSR = hand-foot skin reaction.

Table 4. Incidence and prevalence of grade 5 (fatal) DRAEs

Interval, months	Total population (N = 4684)	Patients <55 years (n = 1126)	Patients 55–<65 years (n = 1579)	Patients 65–<75 years (n = 1382)	Patients ≥75 years (n = 559)
Grade 5 DRAEs at any time, n/n (%; 95% CI)^a					
	34/4684 (0.7; 0.5–1.0)	7/1126 (0.6; 0.3–1.3)	11/1579 (0.7; 0.3–1.2)	14/1382 (1.0; 0.6–1.7)	2/559 (0.4; 0.04–1.3)
Grade 5 DRAEs per 3-month interval, n/n (%)					
<3	20/4684 (0.4)	2/1126 (0.2)	7/1579 (0.4)	9/1382 (0.7)	2/559 (0.4)
3–6	5/2864 (0.2)	2/724 (0.3)	1/967 (0.1)	2/864 (0.2)	0/294 (0)
6–9	2/1515 (0.1)	1/396 (0.3)	1/528 (0.2)	0/464 (0)	0/123 (0)
9–12	3/993 (0.3)	1/254 (0.4)	1/349 (0.3)	1/321 (0.3)	0/67 (0)
12–15	2/707 (0.3)	1/172 (0.6)	0/253 (0)	1/238 (0.4)	0/43 (0)
15–18	0/507 (0)	0/124 (0)	0/191 (0)	0/161 (0)	0/30 (0)
18–21	0/384 (0)	0/97 (0)	0/150 (0)	0/114 (0)	0/22 (0)
21–24	0/260 (0)	0/66 (0)	0/98 (0)	0/83 (0)	0/13 (0)

Abbreviations: CI = confidence interval; DRAEs = drug-related adverse events.

^aNumber of fatal DRAEs occurring during the entire observation period.

National Cancer Institute Common Terminology Criteria for Adverse Events (CTCAE) version 3 and worst CTCAE grade.

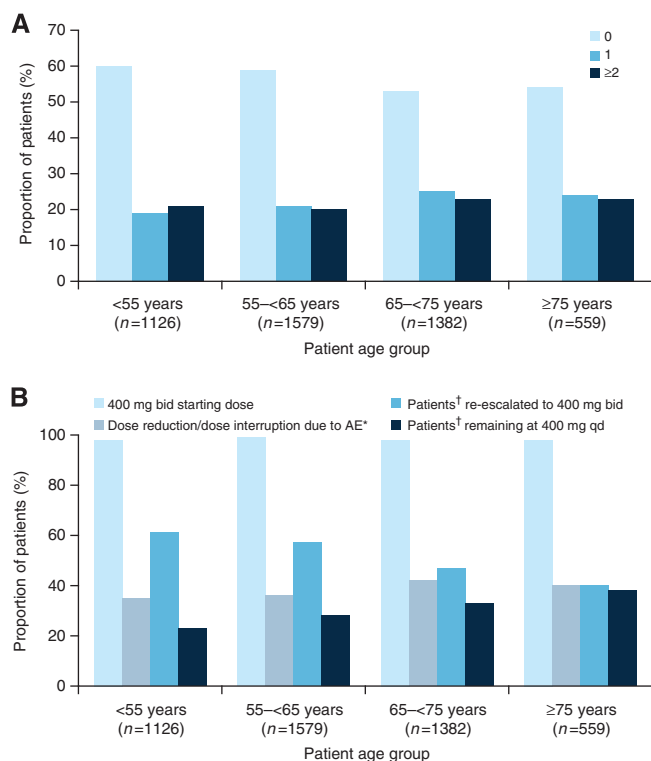


Figure 2. Dosing patterns for patients experiencing AEs. (A) Proportion of patients requiring 0, 1, or ≥ 2 dose reductions or interruptions due to an AE; (B) Proportion of patients initiated at 400 mg bid and dose reduced or dose interrupted, followed by re-escalation, or continuation at the lower dose of 400 mg once daily. *Of those patients who received sorafenib 400 mg bid as the starting dose. †Of those patients with a dose reduction/dose interruption from 400 mg bid. AE = adverse event; bid = twice daily; qd = once daily.

DISCUSSION

The Sor-RCC Integrated Database is a valuable resource for assessing tolerability and treatment patterns in >4600 patients with RCC who received sorafenib in clinical trials or expanded-access programmes. Both incidence and prevalence of AEs can be ascertained from the database. The prevalence of AEs at specific points in time gives an indication of whether the pattern of AEs changes with time – for example, do new AEs appear in patients receiving long-term therapy? Additionally, the database includes a large number of elderly patients, with 1382 (30% of the database) aged 65–<75 years at baseline and 559 patients aged ≥ 75 years. Although the latter group is only 12% of the database, and this relatively small proportion is undoubtedly a limitation, it nevertheless represents (to our knowledge) the largest group of RCC patients aged ≥ 75 years whose treatment patterns have been systematically studied. This is important because patients aged >65 years (and, even more so, those aged ≥ 75) are generally underrepresented in clinical trials (Lewis *et al*, 2003; Surbone, 2011). We therefore used the Sor-RCC Integrated Database to evaluate dosing patterns, and the incidence and prevalence of DRAEs in patients with RCC receiving sorafenib treatment, including subanalyses according to age.

The Sor-RCC Integrated Database included patients from randomized clinical trials, which have strict inclusion criteria, but 78% were from expanded-access programmes. Inclusion criteria for such programmes are less strict than those for RCTs; however, patients are prospectively accrued according to

set protocols. This raises the possibility that patients with poorer performance status and major comorbidities will still be under-represented relative to unselected patients. However, the demographics and baseline characteristics of our population were broadly consistent with those in the general population with RCC. The ratio of men:women was $\sim 2:1$ and median age was 62 years, consistent with cancer statistics for the United States (2004–2007; Altekruse *et al*, 2011). In addition, a medical history of cardiovascular comorbidities was more frequent in older patients than younger patient in our database, consistent with previous observations (Coebergh *et al*, 1999). Together, these results suggest that the patient population in our database is generally representative of patients in clinical practice, including those with comorbidities.

Our analyses were not controlled for prognostic risk group, and the possible confounding effects of this variable cannot be excluded. However, while acknowledging this possible limitation, we conclude that sorafenib was generally well tolerated regardless of age. There were no substantial differences in the incidence of specific any-grade or grade 3/4 DRAEs between age groups. The higher frequency of comorbidities in older patients than in younger patients did not appear to result in more DRAEs with sorafenib. For example, the incidence and severity of hypertension as a DRAE was not substantially different between age subgroups despite the numerically higher incidence of comorbid hypertension in older patients than in younger patients. Notably, sorafenib was generally well tolerated regardless of presence or absence of baseline cardiovascular comorbidities in a subgroup analysis of the EU-ARCCS expanded-access study (Eisen *et al*, 2008a).

Analysis of DRAE prevalence did not indicate cumulative toxicity with long-term sorafenib therapy. Across age subgroups, the prevalence of grade 3/4 DRAEs tended to decrease over the course of therapy, with a concurrent trend for increasing prevalence of grade 1/2 DRAEs, suggesting a shift to less-severe toxicity with continued sorafenib treatment. This could reflect successful management of DRAEs during long-term therapy; it has been suggested that effective monitoring and management of AEs is key to optimising sorafenib duration of therapy (Hutson *et al*, 2010; Edmonds *et al*, 2012).

Fatal DRAEs were rare across age subgroups in this analysis. This is important, as two meta-analyses previously concluded that VEGFR-TKIs were associated with an increased risk of fatal AEs compared with placebo/control (Schutz *et al*, 2012; Sivendran *et al*, 2012). Schutz and coworkers reported an overall incidence of fatal DRAEs of 1.5% with sunitinib, sorafenib or pazopanib, and suggested that their meta-analysis may have actually underestimated the incidence of fatal AEs associated with these agents, as patients in clinical trials tend to have better performance status than those in clinical practice. Sivendran and coworkers reported a fatal AE rate of 3.68% for patients receiving sunitinib, sorafenib or pazopanib for RCC compared with 2.27% for patients receiving control. A subgroup analysis of the three sorafenib studies evaluated (two in RCC and one in HCC) suggested a higher rate of fatal events for sorafenib (3.21%) compared with control (2.15%). However, for each meta-analysis, some important caveats should be considered. The meta-analysis from Schutz and coworkers included patients with various malignancies, and included both monotherapy and combination therapy trials; the incidence of fatal DRAEs in patients with a particular malignancy receiving a specific therapy therefore cannot be ascertained from the meta-analysis. The report from Sivendran and coworkers considered fatal AEs regardless of causality (not specifically DRAEs). In addition, the authors acknowledge that their findings with regard to sorafenib should be considered only as hypothesis generating, as the total number of events involved was relatively few. Importantly, the Sor-RCC Integrated Database includes data for a large number of patients ($N=4684$) from monotherapy

studies in RCC only, and is thus particularly well suited for evaluating the incidence of fatal DRAEs associated with sorafenib treatment in RCC patients; our analysis in this large patient population suggests that the incidence of fatal DRAEs with sorafenib is approximately half that reported for VEGFR-TKIs by Schutz and coworkers.

There were indications in our study that patients aged ≥ 75 years were managed more conservatively than younger patients. The oldest patients were less likely to have previously received nephrectomy and/or cytokines, were treated for slightly shorter time periods, and were more likely to have received dose modifications and/or discontinuations due to DRAEs, particularly early in treatment. These patients were also more likely to remain on a lower dose after dose reduction, rather than be re-escalated to the full dose. A limitation of our data is that performance status is missing for most patients, so it is unclear whether these treatment differences reflect greater frailty in older patients or complications arising from the higher prevalence of comorbidities. Importantly, an appreciable proportion of the oldest patients (8%) were able to receive sorafenib therapy for ≥ 12 months.

CONCLUSIONS

In this large, pooled analysis of a diverse population of patients with RCC, sorafenib was well tolerated across all age subgroups, including those ≥ 75 years. These observations suggest that sorafenib is a well tolerated and effective option for the treatment of advanced RCC, regardless of patient age.

ACKNOWLEDGEMENTS

We are grateful to 7.4 Limited for providing editorial support, with unrestricted financial support from Bayer HealthCare Pharmaceuticals.

CONFLICT OF INTEREST

Giuseppe Procopio has received consulting fees and had an advisory role from Bayer HealthCare Pharmaceuticals, Pfizer and GSK. Joaquim Bellmunt has received consulting and lecture fees from Bayer HealthCare Pharmaceuticals, Novartis and Roche. Janice Dutcher has had an advisory role with Pfizer, Prometheus and Genentech; has served on speakers' bureaux for Pfizer, Prometheus, Bayer HealthCare Pharmaceuticals/Onyx, Novartis and GSK; and has received research funds from Prometheus, Exelixis, and BMS. Sergio Bracarda has served on advisory boards for Pfizer, GSK, Novartis, Bayer HealthCare Pharmaceuticals, Boehringer Ingelheim, Sanofi-Aventis and Janssen-Cilag, and has received lecture fees from Pfizer, Novartis and Sanofi-Aventis. Jennifer Knox has received research support from Bayer HealthCare Pharmaceuticals. Andreas Brueckner and Istvan Molnarg are employees of Bayer HealthCare Pharmaceuticals. Bernard Escudier has served as a consultant for Bayer HealthCare Pharmaceuticals, GSK, Pfizer, Novartis, Roche and AVEO. Thomas Hutson has received research support from, and served as a consultant and on speakers' bureaux for, Bayer HealthCare Pharmaceuticals, GSK, Pfizer, AVEO, Novartis, Genentech and OrthoBiotech.

REFERENCES

Akaza H, Tsukamoto T, Murai M, Nakajima K, Naito S (2007) Phase II study to investigate the efficacy, safety, and pharmacokinetics of sorafenib in

Japanese patients with advanced renal cell carcinoma. *Jpn J Clin Oncol* **37**: 755–762.

- Altekruse SF, Kosary CL, Krapcho M, Neyman N, Aminou R, Waldron W, Ruhl J, Howlander N, Tatalovich Z, Cho H, Mariotto A, Eisner MP, Lewis DR, Cronin K, Chen HS, Feuer EJ, Stinchcomb DG, Edwards BK (eds) (2011) *SEER Cancer Statistics Review, 1975-2007*. National Cancer Institute: Bethesda, MD. http://seer.cancer.gov/csr/1975_2007/index.html (Accessed 18 Aug. 2011).
- Beck J, Procopio G, Bajetta E, Keilholz U, Negrier S, Szczylik C, Bokemeyer C, Bracarda S, Richel DJ, Staehler M, Strauss UP, Mersmann S, Burock K, Escudier B (2011) Final results of the European Advanced Renal Cell Carcinoma Sorafenib (EU-ARCCS) expanded-access study: a large open-label study in diverse community settings. *Ann Oncol* **22**: 1812–1823.
- Berger DA, Megwalu II, Vlahiotis A, Radwan MH, Serrano MF, Humphrey PA, Piccirillo JF, Kibel AS (2008) Impact of comorbidity on overall survival in patients surgically treated for renal cell carcinoma. *Urology* **72**: 359–363.
- Bukowski RM, Stadler WM, McDermott DF, Dutcher JP, Knox JJ, Miller Jr. WH, Hainsworth JD, Henderson CA, Hajdenberg J, Kindwall-Keller TL, Ernstoff MS, Drabkin HA, Curti BD, Chu L, Ryan CW, Hotte SJ, Xia C, Cupit L, Figlin RA (2010) Safety and efficacy of sorafenib in elderly patients treated in the North American advanced renal cell carcinoma sorafenib expanded access program. *Oncology* **78**: 340–347.
- Coebergh JW, Janssen-Heijnen ML, Post PN, Razenberg PP (1999) Serious co-morbidity among unselected cancer patients newly diagnosed in the southeastern part of The Netherlands in 1993-1996. *J Clin Epidemiol* **52**: 1131–1136.
- Edmonds K, Hull D, Spencer-Shaw A, Koldenhof J, Chrysou M, Boers-Doets C, Molassiotis A (2012) Strategies for assessing and managing the adverse events of sorafenib and other targeted therapies in the treatment of renal cell and hepatocellular carcinoma: recommendations from a European nursing task group. *Eur J Oncol Nurs* **16**: 172–184.
- Eisen T, Beck J, Procopio G, Negrier S, Keilholz U, von der Maase H, Strauss UP, Burock K, Mersmann S, Escudier B (2008a) Large open-label, non-comparative phase III study of sorafenib in European patients with advanced RCC (EU-ARCCS) - subgroup analysis of patients with and without baseline clinical cardiovascular disease (CCD). *Ann Oncol* **19**: viii194 (abstract 602P).
- Eisen T, Oudard S, Szczylik C, Gravis G, Heinzer H, Middleton R, Cihon F, Anderson S, Shah S, Bukowski R, Escudier B (2008b) Sorafenib for older patients with renal cell carcinoma: subset analysis from a randomized trial. *J Natl Cancer Inst* **100**: 1454–1463.
- Escudier B, Eisen T, Stadler WM, Szczylik C, Oudard S, Siebels M, Negrier S, Chevreau C, Solska E, Desai AA, Rolland F, Demkow T, Hutson TE, Gore M, Freeman S, Schwartz B, Shan M, Simantov R, Bukowski RM (2007a) Sorafenib in advanced clear-cell renal-cell carcinoma. *N Engl J Med* **356**: 125–134.
- Escudier B, Eisen T, Stadler WM, Szczylik C, Oudard S, Staehler M, Negrier S, Chevreau C, Desai AA, Rolland F, Demkow T, Hutson TE, Gore M, Anderson S, Hofilen G, Shan M, Pena C, Lathia C, Bukowski RM (2009a) Sorafenib for treatment of renal cell carcinoma: final efficacy and safety results of the phase III treatment approaches in renal cancer global evaluation trial. *J Clin Oncol* **27**: 3312–3318.
- Escudier B, Pluzanska A, Koralewski P, Ravaud A, Bracarda S, Szczylik C, Chevreau C, Filippek M, Melichar B, Bajetta E, Gorbunova V, Bay JO, Bodrogi I, Jagiello-Gruszfeld A, Moore N (2007b) Bevacizumab plus interferon alfa-2a for treatment of metastatic renal cell carcinoma: a randomised, double-blind phase III trial. *Lancet* **370**: 2103–2111.
- Escudier B, Szczylik C, Hutson TE, Demkow T, Staehler M, Rolland F, Negrier S, Laferriere N, Scheuring UJ, Cella D, Shah S, Bukowski RM (2009b) Randomized phase II trial of first-line treatment with sorafenib versus interferon alfa-2a in patients with metastatic renal cell carcinoma. *J Clin Oncol* **27**: 1280–1289.
- Hudes G, Carducci M, Tomczak P, Dutcher J, Figlin R, Kapoor A, Staroslawska E, Sosman J, McDermott D, Bodrogi I, Kovacevic Z, Lesovoy V, Schmidt-Wolf IG, Barbarash O, Gokmen E, O'Toole T, Lustgarten S, Moore L, Motzer RJ (2007) Temsirolimus, interferon alfa, or both for advanced renal-cell carcinoma. *N Engl J Med* **356**: 2271–2281.
- Hutson TE, Bellmunt J, Porta C, Szczylik C, Staehler M, Nadel A, Anderson S, Bukowski R, Eisen T, Escudier B (2010) Long-term safety of sorafenib in advanced renal cell carcinoma: follow-up of patients from phase III TARGET. *Eur J Cancer* **46**: 2432–2440.

- Karakiewicz PI, Jeldres C, Suardi N, Hutterer GC, Perrotte P, Capitanio U, Ficarra V, Cindolo L, De La TA, Tostain J, Mulders PF, Salomon L, Zigeuner R, Schips L, Chautard D, Valeri A, Lechevallier E, Descots JL, Lang H, Mejean A, Verhoest G, Patard JJ (2008) Age at diagnosis is a determinant factor of renal cell carcinoma-specific survival in patients treated with nephrectomy. *Can Urol Assoc J* **2**: 610–617.
- Lewis JH, Kilgore ML, Goldman DP, Trimble EL, Kaplan R, Montello MJ, Housman MG, Escarce JJ (2003) Participation of patients 65 years of age or older in cancer clinical trials. *J Clin Oncol* **21**: 1383–1389.
- Motzer RJ, Escudier B, Oudard S, Hutson TE, Porta C, Bracarda S, Grunwald V, Thompson JA, Figlin RA, Hollaender N, Urbanowitz G, Berg WJ, Kay A, Lebwohl D, Ravaud A (2008) Efficacy of everolimus in advanced renal cell carcinoma: a double-blind, randomised, placebo-controlled phase III trial. *Lancet* **372**: 449–456.
- Motzer RJ, Hutson TE, Tomczak P, Michaelson MD, Bukowski RM, Rixe O, Oudard S, Negrier S, Szczylik C, Kim ST, Chen I, Bycott PW, Baum CM, Figlin RA (2007) Sunitinib versus interferon alfa in metastatic renal-cell carcinoma. *N Engl J Med* **356**: 115–124.
- Procopio G (2011) Role of sorafenib in renal cell carcinoma: focus on elderly patients. *Expert Rev Anticancer Ther* **11**: 1689–1692.
- Rini BI, Escudier B, Tomczak P, Kaprin A, Szczylik C, Hutson TE, Michaelson MD, Gorbunova VA, Gore ME, Rusakov IG, Negrier S, Ou YC, Castellano D, Lim HY, Uemura H, Tarazi J, Cella D, Chen C, Rosbrook B, Kim S, Motzer RJ (2011) Comparative effectiveness of axitinib versus sorafenib in advanced renal cell carcinoma (AXIS): a randomised phase 3 trial. *Lancet* **378**: 1931–1939.
- Rini BI, Halabi S, Rosenberg JE, Stadler WM, Vaena DA, Ou SS, Archer L, Atkins JN, Picus J, Czaykowski P, Dutcher J, Small EJ (2008) Bevacizumab plus interferon alfa compared with interferon alfa monotherapy in patients with metastatic renal cell carcinoma: CALGB 90206. *J Clin Oncol* **26**: 5422–5428.
- Schutz FA, Je Y, Richards CJ, Choueiri TK (2012) Meta-analysis of randomized controlled trials for the incidence and risk of treatment-related mortality in patients with cancer treated with vascular endothelial growth factor tyrosine kinase inhibitors. *J Clin Oncol* **30**: 871–877.
- Sivendran S, Liu Z, Portas Jr. LJ, Yu M, Hahn N, Sonpavde G, Oh WK, Galsky MD (2012) Treatment-related mortality with vascular endothelial growth factor receptor tyrosine kinase inhibitor therapy in patients with advanced solid tumors: a meta-analysis. *Cancer Treat Rev* **38**: 919–925.
- Stadler WM, Figlin RA, McDermott DF, Dutcher JP, Knox JJ, Miller Jr. WH, Hainsworth JD, Henderson CA, George JR, Hajdenberg J, Kindwall-Keller TL, Ernstoff MS, Drabkin HA, Curti BD, Chu L, Ryan CW, Hotte SJ, Xia C, Cupit L, Bukowski RM (2010) Safety and efficacy results of the advanced renal cell carcinoma sorafenib expanded access program in North America. *Cancer* **116**: 1272–1280.
- Sternberg CN, Szczylik C, Lee E, Salman PV, Mardiak J, Davis ID, Pandite L, Chen M, McCann L, Hawkins R (2010) A randomized, double-blind phase III study of pazopanib in treatment-naïve and cytokine-pretreated patients with advanced renal cell carcinoma (RCC). *J Clin Oncol* **28**: 1061–1068.
- Surbone A (2011) Ethical considerations in conducting clinical trials for elderly cancer patients. *Aging Health* **4**: 253–260.
- Tolcher AW, Appleman LJ, Shapiro GI, Mita AC, Cihon F, Mazzu A, Sundaresan PR (2011) A phase I open-label study evaluating the cardiovascular safety of sorafenib in patients with advanced cancer. *Cancer Chemother Pharmacol* **67**: 751–764.



This work is licensed under the Creative Commons Attribution-NonCommercial-Share Alike 3.0 Unported License. To view a copy of this license, visit <http://creativecommons.org/licenses/by-nc-sa/3.0/>

Supplementary Information accompanies this paper on British Journal of Cancer website (<http://www.nature.com/bjc>)