

Keywords: FOXP3; Treg; tumour immunity breast cancer; oestrogen receptor; prognosis

Tumour-infiltrating FOXP3⁺ lymphocytes are associated with cytotoxic immune responses and good clinical outcome in oestrogen receptor-negative breast cancer

N R West^{1,2}, S E Kost^{1,2}, S D Martin^{1,3}, K Milne¹, R J deLeeuw¹, B H Nelson^{1,2,4,5} and P H Watson^{*1,2,6}

¹Trev & Joyce Deeley Research Centre, British Columbia Cancer Agency, 2410 Lee Avenue, Victoria, BC V8R 6V5, Canada;

²Department of Biochemistry and Microbiology, University of Victoria, PO Box 3055, Station CSC, Victoria, BC, Canada V8W 3P6;

³Interdisciplinary Oncology Program, BC Cancer Research Centre, University of British Columbia, 675 West 10th Avenue, Vancouver, BC, Canada V5Z 1L3; ⁴Department of Biology, University of Victoria, PO Box 3020, Station CSC, Victoria, BC, Canada V8W 3N5; ⁵Department of Medical Genetics, University of British Columbia, 4500 Oak Street, Unit C201, Vancouver, BC, Canada V6H 3N1 and ⁶Department of Pathology and Laboratory Medicine, University of British Columbia, Room G227, 2211 Wesbrook Mall, Vancouver, BC, Canada V6T 2B5

⁶Department of Pathology and Laboratory Medicine, University of British Columbia, Room G227, 2211 Wesbrook Mall, Vancouver, BC, Canada V6T 2B5

⁶Department of Pathology and Laboratory Medicine, University of British Columbia, Room G227, 2211 Wesbrook Mall, Vancouver, BC, Canada V6T 2B5

⁶Department of Pathology and Laboratory Medicine, University of British Columbia, Room G227, 2211 Wesbrook Mall, Vancouver, BC, Canada V6T 2B5

⁶Department of Pathology and Laboratory Medicine, University of British Columbia, Room G227, 2211 Wesbrook Mall, Vancouver, BC, Canada V6T 2B5

Background: Regulatory T cells (Tregs) are commonly identified by expression of the transcription factor FOXP3 and are conventionally thought to promote cancer progression by suppressing anti-tumour immune responses. We examined the relationship between FOXP3⁺ tumour-infiltrating lymphocytes (TIL) and prognosis in oestrogen receptor (ER)-negative breast cancer, a tumour subtype with poor clinical outcome in which TIL are abundant.

Methods: FOXP3⁺ and CD8⁺ TIL were assessed by immunohistochemistry in a cohort of 175 ER- breast tumours. Results were confirmed in an independent data set of 78 ER- breast tumours with publically available gene expression data.

Results: High FOXP3⁺ TIL levels were strongly associated with prolonged recurrence-free survival (HR=0.461, *P*=0.0002), particularly among basal-like tumours (HR=0.280, *P*=0.0001), for which FOXP3 status was independent of standard prognostic factors. Over 75% of FOXP3⁺ TIL in triple negative breast tumours displayed a conventional CD4⁺CD25⁺ Treg phenotype. Importantly, FOXP3⁺ TIL were positively correlated with CD8⁺ (cytotoxic) T cells (*r*_s=0.76, *P*<0.0001), and were prognostically insignificant in tumours with low levels of CD8⁺ TIL. These observations were confirmed in an independent cohort.

Conclusion: In contrast with current dogma, we show for the first time that FOXP3⁺ TIL are associated with robust anti-tumour immunity and favourable prognosis in ER- breast cancer.

Tumour-infiltrating lymphocytes (TIL) are associated with patient survival in a wide variety of tumour types (Pages *et al*, 2010). In the case of breast cancer, several studies have demonstrated that gene

expression patterns indicative of high TIL content are associated with improved clinical outcome, particularly among tumours with aggressive clinical features such as high histological grade or oestrogen receptor- α (ER α)-negative status (Teschendorff *et al*, 2007; Desmedt *et al*, 2008; Schmidt *et al*, 2008; Calabro *et al*, 2009;

*Correspondence: Dr PH Watson; E-mail: pwatson@bccancer.bc.ca

Received 10 October 2012; accepted 29 October 2012; published online 20 November 2012

© 2013 Cancer Research UK. All rights reserved 0007–0920/13

Rody *et al*, 2009). Several groups have extended these observations by using immunohistochemistry (IHC) to demonstrate that high levels of CD8⁺ TIL (cytotoxic T cells (CTLs)) are associated with good outcome in breast cancer (Mahmoud *et al*, 2011a; Liu *et al*, 2012). The opposite, however, appears to be true of FOXP3⁺ TIL.

FOXP3 is a forkhead family transcription factor that is essential for the development and function of regulatory T cells. Tregs are operationally identified by expression of CD4, CD25, and FOXP3, with FOXP3 being the most commonly used single marker (Campbell and Ziegler, 2007; Sakaguchi *et al*, 2008). Under normal conditions, Tregs are essential suppressors of inappropriate immune responses and thus maintain immunological tolerance to host tissues (Sakaguchi *et al*, 2008). Their suppression of anti-tumour immunity, however, is considered to be deleterious. Indeed, the presence of FOXP3⁺ TIL has been associated with poor clinical outcome in a wide variety of cancer types, fuelling speculation that depletion of Tregs in cancer patients could have beneficial therapeutic effects (deLeeuw *et al*, 2012). Nevertheless, a growing number of studies demonstrate that FOXP3⁺ TIL can also be associated with a favourable prognosis (reviewed in deLeeuw *et al*, 2012). Although this discordance is not currently understood, it is possible that the prognostic impact of FOXP3⁺ TIL depends on the molecular characteristics of a given tumour type.

To date, several studies of breast cancer have shown a consistent association between FOXP3⁺ TIL and poor clinical outcome (Bates *et al*, 2006; Aruga *et al*, 2009; Gobert *et al*, 2009; Liu *et al*, 2011; Yan *et al*, 2011; Mahmoud *et al*, 2011b). Although none of these studies focused on specific histological or molecular subtypes of breast cancer, FOXP3⁺ TIL showed a consistent association with ER-negative (ER-) tumours, which are biologically and clinically distinct from ER+ lesions (Foulkes *et al*, 2010). Because TIL have been shown to associate with good outcome primarily in ER- tumours (Teschendorff *et al*, 2007; Desmedt *et al*, 2008; Calabro *et al*, 2009; Rody *et al*, 2009), and because FOXP3⁺ TIL are inherently associated with ER negativity (Bates *et al*, 2006; Bohling and Allison, 2008; Ghebeh *et al*, 2008; Aruga *et al*, 2009; Liu *et al*, 2011; Mahmoud *et al*, 2011b; Yan *et al*, 2011), we chose to investigate the clinical impact of FOXP3⁺ TIL in ER- breast cancer. Importantly, we found that high numbers of FOXP3⁺ TIL are associated with dense infiltrates of CD8⁺ TIL and favourable prognosis.

MATERIALS AND METHODS

Cohort and sample selection. The primary cohort in this study has been previously described (West *et al*, 2011a). Briefly, formalin-fixed paraffin-embedded (FFPE) surgical breast tumour specimens were provided by the Manitoba Breast Tumour Bank (MBTB), which operates with approval from the Research Ethics Board, Faculty of Medicine, University of Manitoba. Cases for this study were originally accrued between the years 1988 and 2000 and had a median follow-up time of 83 months. Clinical characteristics of the study cohort are summarised in Supplementary Table S1. An initial cohort of 255 ER- cases was selected on the basis of (a) ER- status defined by ligand binding analysis of <10 fmol mg⁻¹ protein, (b) invasive ductal carcinoma components occupying >20% of the tumour section, and (c) no neoadjuvant therapy. Recurrence-free survival (RFS) was defined as the time from surgery to the first instance of disease recurrence or death due to breast cancer, and disease-specific survival (DSS) was defined as the time to death due to breast cancer.

Tissue microarray construction and TIL assessment. Tissue microarray (TMA) construction and IHC was performed as described previously (Milne *et al*, 2009; West *et al*, 2011b) and

in Supplementary Methods. Scoring for each IHC marker was undertaken by an experienced breast histopathologist (PHW) who was blinded to results of other markers or case identity. Prior use and exhaustion of some tissue cores reduced the interpretable cohort size to 175. A microscope eyepiece grid was used to standardise the assessed area of each tissue section (0.56 mm² under ×20 magnification). Among duplicate tissue cores, those with an epithelial-stromal ratio closest to 1:1 were selected for further analysis. Positively stained lymphocytes (nuclear for FOXP3; cytoplasmic and/or membranous for CD8) were counted within the grid area and are expressed herein as cell numbers per mm² of tissue.

Multicolour IHC. A second cohort comprising 14 cases of triple negative breast cancer collected between 2004 and 2007 was obtained from the BC Cancer Agency Tumour Tissue Repository, which operates with approval from the University of British Columbia and BC Cancer Agency Research Ethics Board. Multicolour IHC was performed as described in Supplementary Methods. Tumour-infiltrating lymphocytes were scored manually by two independent observers (NRW and SEK), with an interobserver Spearman's correlation of $\rho > 0.7$.

Assessment of microarray data. Previously published (Prat *et al*, 2010) gene expression data from a third breast tumour cohort were downloaded from the University of North Carolina (UNC) microarray database. Only data corresponding to ER- cases were analysed. Data for selected genes were median normalised and converted to log₂ ratios before analysis. Gene expression scores for differentiated CTLs, activated dendritic cells, and inflammatory cytokines were respectively calculated as the average expression values of *CD247*, *CD8A*, *GZMB*, *IFNG*; *CD86*, *CD83*, *HLA-DRA*; and *IL18*, *IL1B*, *IL6*, *TNF*. Similarly, scores for ligands of *CCR5*, *CXCR3*, and *CCR4* were respectively calculated as the average expression of *CCL3*, *CCL4*, *CCL5*, *CCL8*; *CXCL4*, *CXCL9*, *CXCL10*, *CXCL11*; and *CCL17*, *CCL22*.

Statistical analyses. All univariate analyses were performed using Prism 5.0 (GraphPad, La Jolla, CA, USA). Multivariate Cox proportional hazards regression models were constructed using Statistics 14 (SPSS, Chicago, IL, USA). The TIL distributions showed significant skewness based on the D'Agostino and Pearson omnibus normality test ($P < 0.0001$), and non-parametric tests were thus used where appropriate. Associations between TIL and clinical/pathological parameters were evaluated using Fisher's exact tests or χ^2 tests. The TIL distributions were compared using the Mann-Whitney *U*-test and Spearman's correlation test. Univariate survival analyses were conducted using conventional Kaplan-Meier methods and log-rank tests. All tests were two-sided with significance established at $P < 0.05$.

X-Tile software (Camp *et al*, 2004) was used to identify an appropriate cutoff value for the definition of high vs low levels of FOXP3⁺ TIL. X-Tile creates equally sized training and validation cohorts with equivalent baseline hazard rates from a single data set. For a given variable, an optimal cutpoint that best discriminates good and poor clinical outcome is identified for the training cohort and subsequently tested in the validation cohort.

RESULTS

High levels of FOXP3⁺ TIL are associated with favourable clinical outcome in ER- breast cancer. FOXP3⁺ TIL were detectable in 143 of 175 (82%) assessable tumours. The median number of FOXP3⁺ TIL was 9 per mm², with respective lower and upper quartiles of 3 per mm² and 27 per mm². FOXP3⁺ lymphocytes were present throughout tumours (Figure 1A), with a tendency for stromal localisation (Figure 1B). When patients

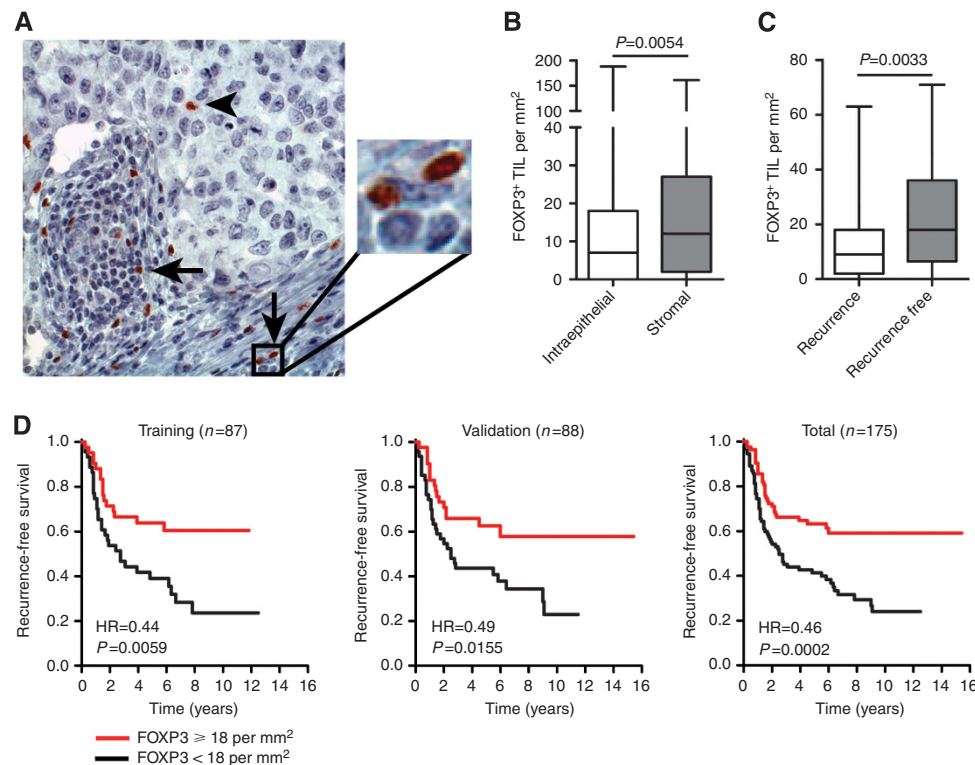


Figure 1. Association of FOXP3⁺ TIL with patient survival. (A) Representative immunohistochemical staining of FOXP3 (brown nuclei), with examples of intraepithelial (arrowhead) and stromal (arrows) FOXP3⁺ TIL. Original magnification, $\times 200$. (B) Box plots representing FOXP3⁺ TIL levels among tumour epithelia and stroma. (C) Distribution of FOXP3⁺ TIL in cases with ($n = 93$) or without ($n = 82$) disease recurrence at final follow-up. (D) Association of FOXP3⁺ TIL with RFS in the training, validation, and combined cohorts (FOXP3 high, $n = 92$; FOXP3 low, $n = 83$).

were categorised based on the presence or absence of recurrent disease at the time of final follow-up, FOXP3⁺ TIL were significantly more abundant in the disease-free subgroup ($P = 0.0033$, Figure 1C).

To establish a FOXP3 cutoff value for survival analysis, we used X-Tile software (Camp *et al*, 2004; as described in Materials and methods) and identified an optimal cutpoint of 18 FOXP3⁺ TIL per mm^2 . Cases with ≥ 18 FOXP3⁺ TIL per mm^2 had significantly prolonged RFS in both the training (HR = 0.438, 95% CI 0.244–0.789; $P = 0.0059$; Figure 1D) and validation cohorts (HR = 0.490, 95% CI 0.275–0.873; $P = 0.0155$). In the combined total cohort, the 10-year RFS rates were 59% and 24% for FOXP3-high and FOXP3-low patients, respectively (HR = 0.461, 95% CI 0.306–0.696; $P = 0.0002$). The cutoff value of 18 per mm^2 was used to define FOXP3 status in all subsequent analyses.

To confirm the association between FOXP3⁺ TIL and patient outcome, we assessed several cutoff values that centred on 18 per mm^2 (Supplementary Table S2). FOXP3⁺ TIL were significantly associated with RFS at cutoff values ranging from 5 per mm^2 to 30 per mm^2 . The pattern of stromal vs intraepithelial infiltration did not significantly influence the clinical relevance of FOXP3⁺ TIL (data not shown).

The clinical significance of FOXP3⁺ TIL is restricted to high-grade tumours. When compared with standard clinical parameters, FOXP3⁺ TIL showed significant associations with younger patient age ($P = 0.0176$), high tumour grade ($P = 0.0003$), and treatment with adjuvant chemotherapy ($P = 0.0064$; Supplementary Table S1). Given a recent report that CD8⁺ TIL are clinically relevant only in high-grade breast tumours (Baker *et al*, 2011), we assessed the importance of grade on the clinical relevance of FOXP3⁺ TIL (Supplementary Figure S2). Strikingly, FOXP3⁺ TIL failed to associate significantly with RFS in low/intermediate grade

tumours (HR = 0.703, 95% CI 0.371–1.333; $P = 0.2812$), but did so strongly in the high-grade subset (HR = 0.355, 95% CI 0.189–0.667; $P = 0.0013$).

FOXP3⁺ TIL show strong clinical significance in triple negative and basal-like breast tumours. To determine whether FOXP3⁺ TIL levels vary within different molecular subtypes, we categorised cases based on Her2 overexpression, triple negative status, or basal-like histology (Supplementary Figure S3). The levels of FOXP3⁺ TIL were similar among these subtypes ($P = 0.7235$, ANOVA). Intriguingly, FOXP3⁺ TIL were clinically irrelevant in the Her2 + subset (RFS, $P = 0.4928$; DSS, $P = 0.3131$), but were strongly associated with favourable RFS (HR = 0.371, 95% CI 0.213–0.644; $P = 0.0004$) and DSS (HR = 0.416, 95% CI 0.231–0.750; $P = 0.0036$) in triple negative tumours. This was particularly striking among basal-like tumours (RFS, HR = 0.280, 95% CI 0.148–0.532; $P = 0.0001$; and DSS, HR = 0.281, 95% CI 0.142–0.556; $P = 0.0003$; Supplementary Figure S3).

When the relative associations of standard clinical parameters with RFS were assessed in multivariate analysis, only lymph-node metastasis, tumour size, and treatment with chemotherapy emerged as significant independent prognostic parameters (Table 1). When corrected for these variables in the total cohort, FOXP3 status did not reach significance as a correlate of RFS ($P = 0.082$). However, FOXP3 status showed independent statistical significance in the triple negative ($P = 0.041$) and basal-like tumour subsets ($P = 0.010$; Table 1).

The majority of FOXP3⁺ TIL in triple negative breast tumours co-express CD4 and CD25. Our observation that FOXP3⁺ TIL are associated with good prognosis is inconsistent with the conventional assumption that they suppress anti-tumour immunity. Notably, effector T cells can transiently express low levels of FOXP3 following activation (Allan *et al*, 2007). To determine if this

Table 1. Association of FOXP3⁺ TIL with RFS in a Cox proportional hazards model

	All patients (n = 144)		TNBC (n = 82)		Basal-like (n = 65)	
	HR (95% CI)	P-value	HR (95% CI)	P-value	HR (95% CI)	P-value
Node status	2.320 (1.402–3.838)	0.001	2.359 (1.160–4.797)	0.018	2.567 (1.125–5.857)	0.025
Tumour size	1.708 (0.960–3.039)	0.068	2.866 (1.253–6.554)	0.013	2.906 (1.138–7.424)	0.026
Chemotherapy	0.377 (0.233–0.611)	<0.001	0.318 (0.164–0.617)	0.001	0.419 (0.207–0.849)	0.016
FOXP3	0.647 (0.397–1.056)	0.082	0.506 (0.263–0.972)	0.041	0.374 (0.177–0.787)	0.010

Abbreviations: CI = confidence interval; HR = hazard ratio; RFS = Recurrence-free survival; TIL = tumour-infiltrating lymphocytes; TNBC = triple negative breast cancer.

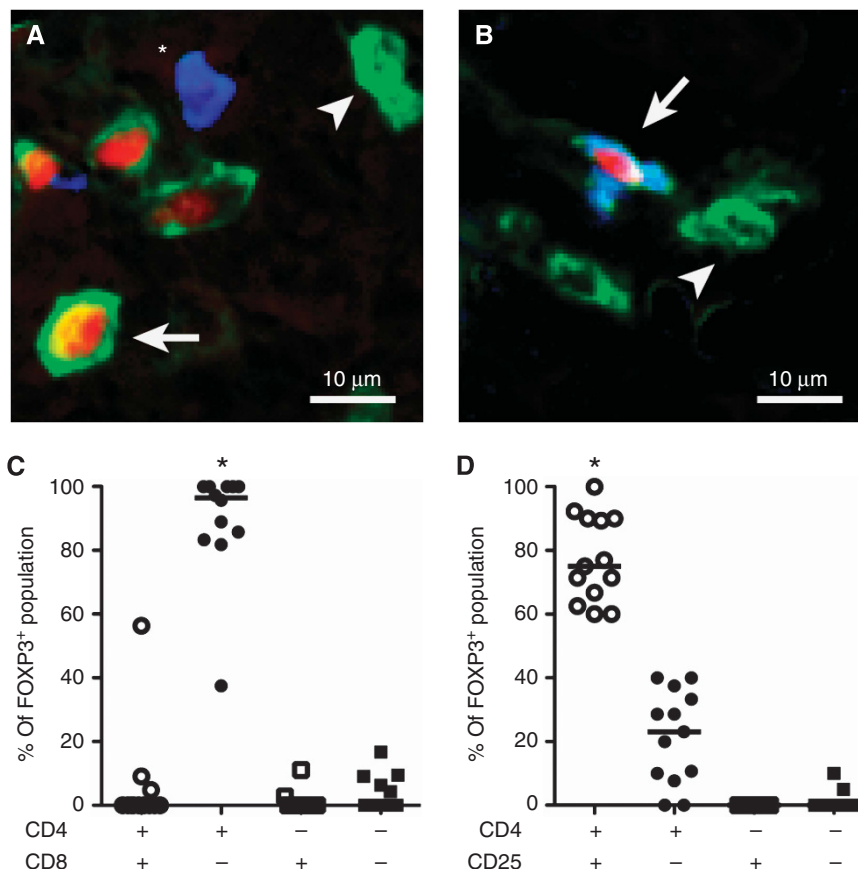


Figure 2. Expression of CD4, CD25, and CD8 among FOXP3⁺ TIL in triple negative breast tumours. (A) Representative immunohistochemical (pseudocoloured) staining for FOXP3 (red), CD4 (green), and CD8 (blue). Examples of FOXP3⁺CD4⁺ (arrow), FOXP3⁺CD4⁺ (arrowhead), and FOXP3⁺CD8⁺ (asterisk) TIL are indicated. (B) Representative staining for FOXP3 (red), CD4 (green), and CD25 (blue). Examples of FOXP3⁺CD4⁺CD25⁺ (arrow) and FOXP3⁺CD4⁺CD25⁻ (arrowhead) TIL are indicated. (C) Quantification of CD4 and CD8 expression and (D) CD4 and CD25 expression among FOXP3⁺ TIL for each tumour. Lines represent medians. **P*<0.0001 vs all other groups, Mann–Whitney *U*-test.

could explain our results, we performed multicolour IHC for detection of FOXP3, CD4, CD8, and CD25. Among a panel of 14 triple negative breast tumours, we found that, on average, 89% of FOXP3⁺ TIL expressed a CD4⁺CD8⁻ phenotype (Figures 2A and C). Moreover, an average of 77% (range 60–100%) of FOXP3⁺ TIL co-expressed CD4 and CD25 (the classic Treg phenotype; Figures 2B and D). Therefore, the vast majority of FOXP3⁺ TIL in triple negative breast tumours are CD8⁻CD4⁺CD25⁺, supporting their classification as conventional Tregs.

FOXP3⁺ TIL are associated with tumour-infiltrating CTLs. Because CD8⁺ (cytotoxic) T cells are associated with a favourable prognosis in breast cancer (Baker *et al*, 2011; Ladoire *et al*, 2011;

Liu *et al*, 2011, 2012; Mahmoud *et al*, 2011a), we hypothesised that high numbers of FOXP3⁺ lymphocytes may correlate with good outcome via an association with increased numbers of CD8⁺ TIL. Indeed, in the MBTB cohort we observed a strong correlation between FOXP3⁺ TIL and total CD8⁺ infiltrates (Spearman’s *r* = 0.7606, 95% CI 0.6796–0.8233; *P* < 0.0001; Figure 3A). This relationship was consistent regardless of whether CD8⁺ TIL were present in the tumour epithelium or stroma (Figure 3A), and was clearly evident within the basal-like subset (Spearman’s *r* = 0.7995, 95% CI 0.6894–0.8735; *P* < 0.0001). Notably, all FOXP3-high cases had detectable CD8⁺ TIL (Fisher’s exact test, *P* < 0.0001).

We have previously shown that intraepithelial (ie) CD8⁺ TIL are associated with good outcome in breast cancer (West *et al*,

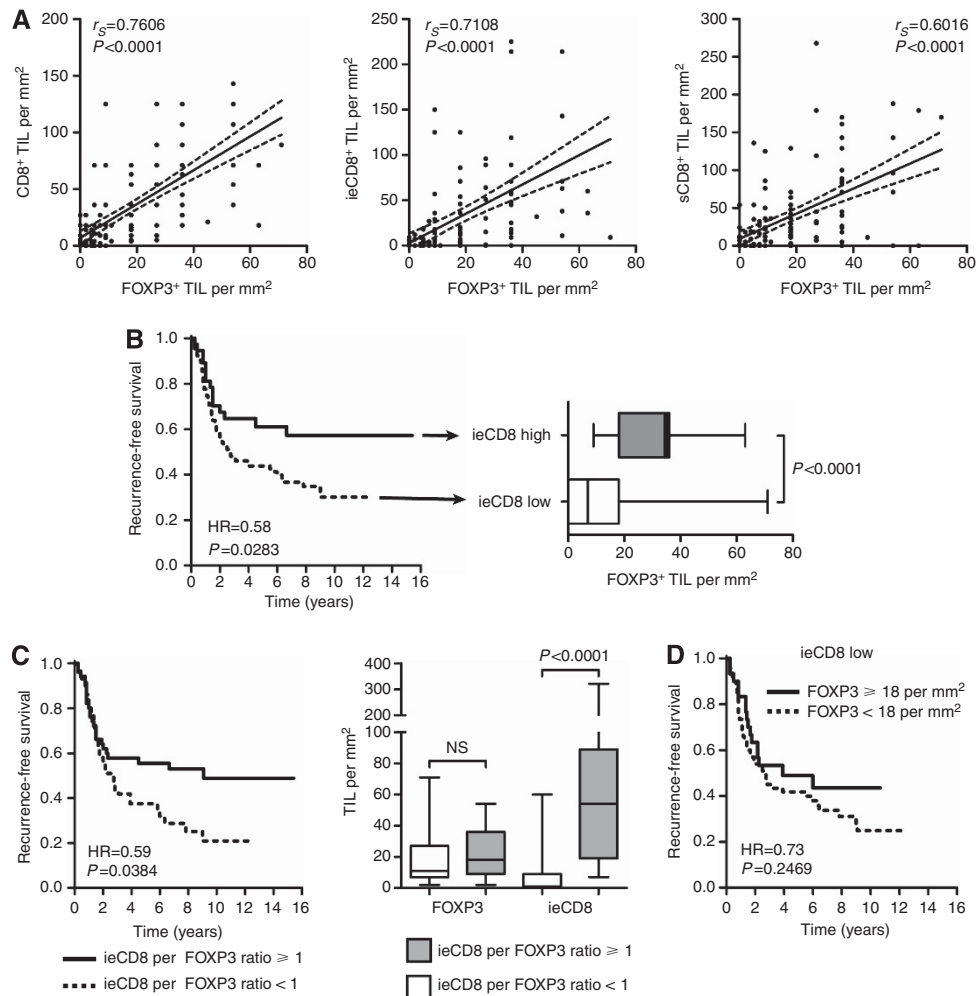


Figure 3. Relationships between FOXP3⁺ TIL, cytotoxic T cells, and patient outcome. (A) Spearman's correlation of FOXP3⁺ TIL vs total (left panel), intraepithelial (middle panel), and stromal (right panel) CD8⁺ TIL. The solid line represents the line of best fit, with 95% confidence intervals indicated as dashed lines. (B) RFS based on high (\geq upper quartile, $n=37$) or low ($n=105$) levels of intraepithelial CD8⁺ TIL (left panel), with box plots indicating FOXP3⁺ TIL levels in each group. (C, left panel) RFS among patients with high (≥ 1 , $n=51$) and low (< 1 , $n=59$) ratios of intraepithelial CD8⁺ to FOXP3⁺ TIL. Cases with no detectable FOXP3⁺ TIL were omitted. (C, right panel) Box plots representing FOXP3⁺ and intraepithelial CD8⁺ TIL levels in the indicated patient groups. (D) Association of FOXP3 (high $n=30$; low $n=70$) with RFS among patients with low levels of intraepithelial CD8⁺ TIL.

2011a). In our current study, high levels (≥ 36 per mm², upper quartile) of ieCD8⁺ TIL were similarly associated with favourable RFS (HR = 0.581, 95% CI 0.358–0.944; $P=0.0283$; Figure 3B). As we speculated, FOXP3⁺ TIL were significantly more abundant (> 3 -fold on average) in the ieCD8-high group compared with the ieCD8-low group ($P<0.0001$; Figure 3B).

In addition to high levels of CD8⁺ TIL, a high CD8⁺-to-FOXP3⁺ TIL ratio has been reported to associate with favourable prognosis in multiple tumour types (deLeeuw *et al*, 2012), including breast cancer (Ladoire *et al*, 2011; Liu *et al*, 2011). Among cases in our data set with detectable FOXP3⁺ TIL, we similarly observed that those with an ieCD8/FOXP3 ratio of ≥ 1 had significantly better RFS than those with ratios < 1 ($P=0.0384$; Figure 3C). However, while both groups had similar levels of FOXP3⁺ TIL, ieCD8⁺ TIL were significantly more abundant in the group with a high ieCD8/FOXP3 ratio ($P<0.0001$; Figure 3C). This suggests that the number of ieCD8⁺ TIL is a stronger prognostic factor than the ieCD8/FOXP3 ratio. Indeed, within the ieCD8/FOXP3-high group, the RFS of cases with low levels of ieCD8⁺ TIL (< 36 per mm²) was indistinguishable from that of the ieCD8/FOXP3-low group ($P=0.9871$, data not shown).

If the relationship between FOXP3⁺ TIL and good clinical outcome is independent of CD8⁺ TIL, then one would expect FOXP3⁺ TIL to be prognostic in the absence of cytotoxic immune responses. However, high levels of FOXP3⁺ TIL were not significantly associated with RFS in tumours that were ieCD8 low (HR = 0.728, 95% CI 0.426–1.246; $P=0.2469$; Figure 3D). Collectively, these data suggest that the association between FOXP3⁺ TIL and good prognosis in ER- breast cancer depends on the presence of CTLs.

Tregs are associated with good outcome and anti-tumour immunity in an independent data set. To test our observations in an independent cohort, we assessed gene expression data from a previously published study (Prat *et al*, 2010, UNC cohort). Because FOXP3 can be strongly expressed in epithelial cells (Merlo *et al*, 2009), we chose not to use this as an indicator of general Treg content. Rather, we used CD25, a gene that is expressed largely by lymphocytes and to a particularly strong extent by Tregs. Indeed, we found that an average of 80% of CD25⁺ lymphocytes in triple negative tumours were CD4⁺FOXP3⁺ (Supplementary Figure S4).

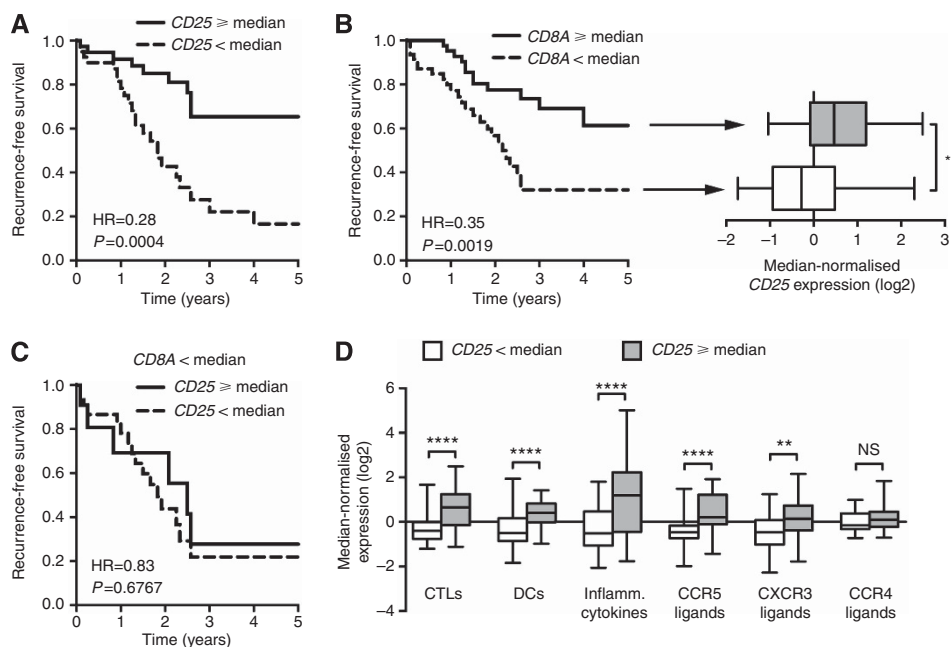


Figure 4. Association of Tregs with prognosis and immune parameters in an independent data set. (A) Five-year RFS of patients with high ($n = 38$) and low ($n = 40$) levels of $CD25$ expression. (B) Five-year RFS of patients with high ($n = 47$) and low ($n = 47$) levels of $CD8A$ expression, with corresponding box plots indicating $CD25$ expression. (C) Association of $CD25$ (high $n = 11$; low $n = 30$) with RFS among patients with low $CD8A$ expression. (D) Gene expression modules indicative of differentiated cytotoxic T cells, activated dendritic cells, inflammatory cytokines, and chemokines relative to $CD25$ status. In all panels, asterisks represent Mann–Whitney U -test significance levels as follows: **** $P < 0.0001$, *** $P = 0.001–0.01$, ** $P = 0.01–0.05$.

Among 78 ER- breast tumours, high ($>$ median) $CD25$ expression was strongly associated with prolonged RFS (HR = 0.279, 95% CI 0.135–0.550; $P = 0.0004$; Figure 4A). High $CD8A$ expression was also associated with good outcome ($P = 0.0019$) as well as high $CD25$ expression ($P = 0.0002$; Figure 4B). In the absence of high $CD8A$ expression, however, $CD25$ had no prognostic significance (Figure 4C). Intriguingly, high $CD25$ expression was strongly associated with gene expression patterns indicative of differentiated CTLs ($P < 0.0001$), activated dendritic cells ($P < 0.0001$), and a pro-inflammatory cytokine milieu ($P < 0.0001$; Figure 4D). $CD25$ -high cases also displayed strong expression of ligands for the chemokine receptors $CCR5$ ($P < 0.0001$) and $CXCR3$ ($P = 0.0012$; Figure 4D), which are crucial for peripheral tissue infiltration by CTLs, Th1 cells, and Tregs (Mantovani *et al*, 2006; Ding *et al*, 2012; Oldham *et al*, 2012; Redjimi *et al*, 2012). In contrast, $CCL17$ and $CCL22$, which mediate the selective recruitment of Tregs (Curiel *et al*, 2004; Hirahara *et al*, 2006; Gobert *et al*, 2009), were not highly expressed in $CD25$ -high tumours ($P = 0.2540$; Figure 4D). Together with our IHC-based results, these data suggest that strong infiltration of ER- breast tumours by Tregs is indicative of robust anti-tumour immunity.

DISCUSSION

While CTLs are associated with favourable clinical outcome in various tumour settings, the relationship between FOXP3⁺ TIL (putative Tregs) and prognosis is less clear. In some cancer types, such as hepatocellular carcinoma, FOXP3⁺ TIL are consistently associated with poor outcome, while in colorectal cancer the opposite is true (deLeeuw *et al*, 2012). In the case of breast cancer, six of seven studies report a relationship between FOXP3⁺ TIL and poor outcome (Bates *et al*, 2006; Aruga *et al*, 2009; Gobert *et al*, 2009; de Kruijff *et al*, 2010; Liu *et al*, 2011; Yan *et al*, 2011;

Mahmoud *et al*, 2011b). Our observation that FOXP3⁺ TIL are associated with good outcome in ER- breast cancer thus seemingly contradicts the current balance of literature. However, ours is the first study to address the relationship between FOXP3⁺ TIL and outcome specifically in ER- breast cancer.

The ER- breast tumours are biologically and clinically distinct from their ER+ counterparts (Foulkes *et al*, 2010). Tumour-infiltrating lymphocytes are notably associated with good outcome among ER- tumours, but not typically among ER+ lesions (Teschendorff *et al*, 2007; Desmedt *et al*, 2008; Schmidt *et al*, 2008; Calabro *et al*, 2009; Rody *et al*, 2009). Furthermore, ER- tumours contain higher levels of TIL than ER+ tumours (Bates *et al*, 2006; Ghebeh *et al*, 2008; Foulkes *et al*, 2010; Baker *et al*, 2011; Liu *et al*, 2011, 2012; Mahmoud *et al*, 2011a, b). Because prior studies of FOXP3⁺ TIL in breast cancer involved mixed cohorts that were largely comprised of ER+ cases, the relationship between FOXP3⁺ TIL and good prognosis in ER- disease may have been obscured by a negative prognostic relationship among ER+ tumours. For example, Bates *et al* (2006) and Mahmoud *et al* (2011b) reported that FOXP3⁺ TIL were associated with poor prognosis in ER+ breast cancer, but apparently not among ER- cases. Importantly, the FOXP3 cutoff values used in these prior studies may not have reflected clinically relevant FOXP3⁺ TIL levels within ER- tumours. For example, if the cutoff values used in the Bates or Mahmoud studies (respectively, 5 per mm² (35th percentile) and 0 per mm² (18th percentile)) are applied to our data, we obtain at best a weak discrimination of patient survival (Supplementary Table S2). By examining a strictly ER- cohort, our observations may be explained by a FOXP3 cutoff value that is more relevant to ER- tumours.

Beyond considerations of tumour subtype, we also examined the possibility that a significant proportion of FOXP3⁺ TIL in our cohort might be effector T cells undergoing transient activation-induced FOXP3 expression. This was untrue, however, as over three quarters of FOXP3⁺ TIL displayed a classic CD4⁺CD25⁺

phenotype in triple negative tumours (Figure 2). Rather, FOXP3⁺ TIL were strongly associated with CD8⁺ TIL, which are known correlates of good outcome in breast cancer (Baker *et al*, 2011; Mahmoud *et al*, 2011a; West *et al*, 2011a). Importantly, the association of FOXP3⁺ TIL with good outcome was dependent on the presence of large numbers of CD8⁺ TIL (Figure 3D). These results were confirmed in the UNC data set (using CD25 as an alternative Treg marker). Therefore, in the context of ER- breast cancer, FOXP3⁺ TIL appear to serve as markers of robust anti-tumour immunity.

Our findings could be explained by the fact that CD8⁺ T cells and Tregs infiltrate tumours using similar mechanisms (Fisher *et al*, 2006; Ley *et al*, 2007). For T-cell extravasation to occur, T cells must initiate vascular rolling by interacting with endothelial selectins via CD44, CD62L, or PSGL, which are expressed by both Tregs and activated CD8⁺ T cells (Ohmichi *et al*, 2011). Chemokines on the vascular lumen then activate lymphocyte adhesion molecules to promote extravasation (Ley *et al*, 2007). Importantly, the majority of chemokine receptors that mediate CD8⁺ T-cell extravasation (e.g., CCR5, CXCR3, and CXCR6) are also expressed by FOXP3⁺ T cells (Ding *et al*, 2012; Oldham *et al*, 2012; Redjimi *et al*, 2012). As such, it is logical that FOXP3⁺ and CD8⁺ TIL co-infiltrate breast tumours. Indeed, CD25-high tumours in the UNC data set expressed high levels of ligands for CCR5 and CXCR3 (Figure 4D), but not CCL22, which selectively recruits Tregs via CCR4 (Curiel *et al*, 2004; Gobert *et al*, 2009). Notably, some breast tumours appear to contain high endothelial venules (HEVs), blood vessels that specialise in lymphocyte recruitment and are normally found in lymphoid organs (Martinet *et al*, 2011). In human breast tumours, HEVs are strongly correlated with a wide variety of TIL types, suggesting that HEVs could serve as a shared route of infiltration for CD8⁺ and FOXP3⁺ TIL.

It is intriguing that CD8⁺ TIL are associated with good outcome in ER- breast cancer despite a large number of co-infiltrating Tregs, which are conventionally expected to suppress immunity. In general, Tregs require close contact with target cells to exert suppression (Shevach, 2009). However, in the triple negative cohort assessed in our study, fewer than 20% of CD4⁺FOXP3⁺ lymphocytes were in direct contact with CD8⁺ TIL (data not shown), suggesting that Tregs in ER- breast tumours may not exert significant suppression on CTLs. Moreover, gene expression data from the UNC cohort demonstrated that markers of dendritic cell activation, CD8⁺ T-cell cytotoxicity, and inflammatory cytokine production were enriched in CD25-high tumours, suggesting that multiple important aspects of anti-tumour immunity can be active in ER- breast tumours despite the presence of Tregs.

While this is the first report of FOXP3⁺ TIL being associated with good outcome in ER- breast cancer, this relationship has been observed in other tumour types, notably colorectal and ovarian cancer (Milne *et al*, 2009; Salama *et al*, 2009; Frey *et al*, 2010; Zlobec *et al*, 2010; Yoon *et al*, 2012). In both these settings, FOXP3⁺ TIL are strongly correlated with high levels of CD8⁺ TIL, in agreement with our own results (Milne *et al*, 2009; Salama *et al*, 2009; Yoon *et al*, 2012). In the context of colon cancer, Tregs may be capable of exerting pro-inflammatory Th17-like effects (Blatner *et al*, 2010). In addition, Tregs could conceivably suppress or eliminate innate leukocytes (such as macrophages) that are thought to promote tumour progression through the production of mitogens and angiogenic factors (DeNardo *et al*, 2008). This highlights the possibility that FOXP3⁺ TIL may have direct host-protective effects in ER- breast tumours. Alternatively, Tregs may have normal suppressive capacity, but at levels insufficient to override the anti-tumour activity of CD8⁺ TIL. In this case, eliminating Tregs from ER- breast tumours could enhance anti-tumour immunity beyond the already beneficial natural response.

To determine if Tregs in ER- breast tumours are beneficial, deleterious, or inconsequential, their phenotypic and functional qualities must be assessed more comprehensively. Given that the prognostic impact of Tregs appears to differ based on ER status, histological grade, and molecular subtype, comparing the biology of Tregs in distinct tumour phenotypes may provide valuable insights into both Treg biology and breast cancer immunology. Until we have a better understanding of the functional properties of FOXP3⁺ TIL in breast cancer, it seems premature to proceed with strategies aimed at depleting or inhibiting these cells in patients.

ACKNOWLEDGEMENTS

We thank Sindy Babinszky (BC Cancer Agency Tumour Tissue Repository) for technical assistance and members of the Deeley Research Centre for helpful discussion. This study was supported by the BC Cancer Agency Tumour Tissue Repository and the Manitoba Breast Tumour Bank, both members of the Canadian Tumour Repository Network. Funding was from the Canadian Institutes of Health Research (CIHR grant MOP-64349), the Canadian Breast Cancer Foundation, and the BC Cancer Foundation. NRW and SEK were respectively supported by training grants from the US DOD breast cancer research program (W81XWH-08-1-0781) and the Natural Sciences and Engineering Research Council of Canada.

REFERENCES

- Allan SE, Crome SQ, Crellin NK, Passerini L, Steiner TS, Bacchetta R, Roncarolo MG, Levings MK (2007) Activation-induced FOXP3 in human T effector cells does not suppress proliferation or cytokine production. *Int Immunol* **19**(4): 345–354.
- Aruga T, Suzuki E, Saji S, Horiguchi S, Horiguchi K, Sekine S, Kitagawa D, Funata N, Toi M, Sugihara K, Kuroi K (2009) A low number of tumour-infiltrating FOXP3-positive cells during primary systemic chemotherapy correlates with favourable anti-tumour response in patients with breast cancer. *Oncol Rep* **22**(2): 273–278.
- Baker K, Lachapelle J, Zlobec I, Bismar TA, Terracciano L, Foulkes WD (2011) Prognostic significance of CD8⁺ T lymphocytes in breast cancer depends upon both oestrogen receptor status and histological grade. *Histopathology* **58**(7): 1107–1116.
- Bates GJ, Fox SB, Han C, Leek RD, Garcia JF, Harris AL, Banham AH (2006) Quantification of regulatory T cells enables the identification of high-risk breast cancer patients and those at risk of late relapse. *J Clin Oncol* **24**(34): 5373–5380.
- Blatner NR, Bonertz A, Beckhove P, Cheon EC, Krantz SB, Strouch M, Weitz J, Koch M, Halverson AL, Bentrem DJ, Khazaie K (2010) In colorectal cancer mast cells contribute to systemic regulatory T-cell dysfunction. *Proc Natl Acad Sci USA* **107**(14): 6430–6435.
- Bohling SD, Allison KH (2008) Immunosuppressive regulatory T cells are associated with aggressive breast cancer phenotypes: a potential therapeutic target. *Mod Pathol* **21**(12): 1527–1532.
- Calabro A, Beissbarth T, Kuner R, Stojanov M, Benner A, Asslaber M, Ploner F, Zatloukal K, Samonigg H, Poustka A, Sultmann H (2009) Effects of infiltrating lymphocytes and oestrogen receptor on gene expression and prognosis in breast cancer. *Breast Cancer Res Treat* **116**(1): 69–77.
- Camp RL, Dolled-Filhart M, Rimm DL (2004) X-tile: a new bio-informatics tool for biomarker assessment and outcome-based cut-point optimization. *Clin Cancer Res* **10**(21): 7252–7259.
- Campbell DJ, Ziegler SF (2007) FOXP3 modifies the phenotypic and functional properties of regulatory T cells. *Nat Rev Immunol* **7**(4): 305–310.
- Curiel TJ, Coukos G, Zou L, Alvarez X, Cheng P, Mottram P, Evdemon-Hogan M, Conejo-Garcia JR, Zhang L, Burow M, Zhu Y, Wei S, Kryczek I, Daniel B, Gordon A, Myers L, Lackner A, Disis ML, Knutson KL, Chen L, Zou W (2004) Specific recruitment of regulatory T cells in ovarian carcinoma fosters immune privilege and predicts reduced survival. *Nat Med* **10**(9): 942–949.

- de Kruijf EM, van Nes JG, Sajet A, Tummers QR, Putter H, Osanto S, Speetjens FM, Smit VT, Liefers GJ, van de Velde CJ, Kuppen PJ (2010) The predictive value of HLA class I tumour cell expression and presence of intratumoural Tregs for chemotherapy in patients with early breast cancer. *Clin Cancer Res* **16**(4): 1272–1280.
- deLeeuw RJ, Kost SE, Kakal JA, Nelson BH (2012) The prognostic value of FoxP3+ tumour-infiltrating lymphocytes in cancer: a critical review of the literature. *Clin Cancer Res* **18**(11): 3022–3029.
- DeNardo DG, Johansson M, Coussens LM (2008) Immune cells as mediators of solid tumour metastasis. *Cancer Metastasis Rev* **27**(1): 11–18.
- Desmedt C, Haibe-Kains B, Wirapati P, Buyse M, Larsimont D, Bontempi G, Delorenzi M, Piccart M, Sotiriou C (2008) Biological processes associated with breast cancer clinical outcome depend on the molecular subtypes. *Clin Cancer Res* **14**(16): 5158–5165.
- Ding Y, Xu J, Bromberg JS (2012) Regulatory T cell migration during an immune response. *Trends Immunol* **33**(4): 174–180.
- Fisher DT, Chen Q, Appenheimer MM, Skitzki J, Wang WC, Odunsi K, Evans SS (2006) Hurdles to lymphocyte trafficking in the tumour microenvironment: implications for effective immunotherapy. *Immunol Invest* **35**(3–4): 251–277.
- Foulkes WD, Smith IE, Reis-Filho JS (2010) Triple-negative breast cancer. *N Engl J Med* **363**(20): 1938–1948.
- Frey DM, Droeser RA, Viehl CT, Zlobec I, Lugli A, Zingg U, Oertli D, Kettelhack C, Terracciano L, Tornillo L (2010) High frequency of tumour-infiltrating FOXP3(+) regulatory T cells predicts improved survival in mismatch repair-proficient colorectal cancer patients. *Int J Cancer* **126**(11): 2635–2643.
- Ghebeh H, Barhoush E, Tulbah A, Elkum N, Al-Tweigeri T, Dermime S (2008) FOXP3+ Tregs and B7-H1 + /PD-1 + T lymphocytes co-infiltrate the tumour tissues of high-risk breast cancer patients: Implication for immunotherapy. *BMC Cancer* **8**: 57.
- Gobert M, Treilleux I, Bendriss-Vermare N, Bachelot T, Goddard-Leon S, Arfi V, Biota C, Doffin AC, Durand I, Olive D, Perez S, Pasqual N, Faure C, Ray-Coquard I, Puisieux A, Caux C, Blay JY, Menetrier-Caux C (2009) Regulatory T cells recruited through CCL22/CCR4 are selectively activated in lymphoid infiltrates surrounding primary breast tumours and lead to an adverse clinical outcome. *Cancer Res* **69**(5): 2000–2009.
- Hirahara K, Liu L, Clark RA, Yamanaka K, Fuhlbrigge RC, Kupper TS (2006) The majority of human peripheral blood CD4+ CD25highFoxp3+ regulatory T cells bear functional skin-homing receptors. *J Immunol* **177**(7): 4488–4494.
- Ladoire S, Mignot G, Dabakuyo S, Arnould L, Apetoh L, Rebe C, Coudert B, Martin F, Bizollon MH, Vanoli A, Coutant C, Fumoleau P, Bonnetain F, Ghiringhelli F (2011) In situ immune response after neoadjuvant chemotherapy for breast cancer predicts survival. *J Pathol* **224**(3): 389–400.
- Ley K, Laudanna C, Cybulsky MI, Nourshargh S (2007) Getting to the site of inflammation: the leukocyte adhesion cascade updated. *Nat Rev Immunol* **7**(9): 678–689.
- Liu F, Lang R, Zhao J, Zhang X, Pringle GA, Fan Y, Yin D, Gu F, Yao Z, Fu L (2011) CD8(+) cytotoxic T cell and FOXP3(+) regulatory T cell infiltration in relation to breast cancer survival and molecular subtypes. *Breast Cancer Res Treat* **130**(2): 645–655.
- Liu S, Lachapelle J, Leung S, Gao D, Foulkes WD, Nielsen TO (2012) CD8+ lymphocyte infiltration is an independent favourable prognostic indicator in basal-like breast cancer. *Breast Cancer Res* **14**(2): R48.
- Mahmoud SM, Paish EC, Powe DG, Macmillan RD, Grainge MJ, Lee AH, Ellis IO, Green AR (2011a) Tumour-infiltrating CD8+ lymphocytes predict clinical outcome in breast cancer. *J Clin Oncol* **29**(15): 1949–1955.
- Mahmoud SM, Paish EC, Powe DG, Macmillan RD, Lee AH, Ellis IO, Green AR (2011b) An evaluation of the clinical significance of FOXP3+ infiltrating cells in human breast cancer. *Breast Cancer Res Treat* **127**(1): 99–108.
- Mantovani A, Bonocchi R, Locati M (2006) Tuning inflammation and immunity by chemokine sequestration: decoys and more. *Nat Rev Immunol* **6**(12): 907–918.
- Martinet L, Garrido I, Filleron T, Le Guellec S, Bellard E, Fournier JJ, Rochaix P, Girard JP (2011) Human solid tumours contain high endothelial venules: association with T- and B-lymphocyte infiltration and favourable prognosis in breast cancer. *Cancer Res* **71**(17): 5678–5687.
- Merlo A, Casalini P, Carcangiu ML, Malventano C, Triulzi T, Menard S, Tagliabue E, Balsari A (2009) FOXP3 expression and overall survival in breast cancer. *J Clin Oncol* **27**(11): 1746–1752.
- Milne K, Kobel M, Kalloger SE, Barnes RO, Gao D, Gilks CB, Watson PH, Nelson BH (2009) Systematic analysis of immune infiltrates in high-grade serous ovarian cancer reveals CD20, FoxP3 and TIA-1 as positive prognostic factors. *PLoS ONE* **4**(7): e6412.
- Ohmichi Y, Hirakawa J, Imai Y, Fukuda M, Kawashima H (2011) Essential role of peripheral node addressin in lymphocyte homing to nasal-associated lymphoid tissues and allergic immune responses. *J Exp Med* **208**(5): 1015–1025.
- Oldham KA, Parsonage G, Bhatt RI, Wallace DM, Deshmukh N, Chaudhri S, Adams DH, Lee SP (2012) T lymphocyte recruitment into renal cell carcinoma tissue: a role for chemokine receptors CXCR3, CXCR6, CCR5, and CCR6. *Eur Urol* **61**(2): 385–394.
- Pages F, Galon J, Dieu-Nosjean MC, Tartour E, Sautes-Fridman C, Fridman WH (2010) Immune infiltration in human tumours: a prognostic factor that should not be ignored. *Oncogene* **29**(8): 1093–1102.
- Prat A, Parker JS, Karginova O, Fan C, Livasy C, Herschkowitz JI, He X, Perou CM (2010) Phenotypic and molecular characterization of the claudin-low intrinsic subtype of breast cancer. *Breast Cancer Res* **12**(5): R68.
- Redjimi N, Raffin C, Raimbaud I, Pignon P, Matsuzaki J, Odunsi K, Valmori D, Ayyoub M (2012) CXCR3+ T regulatory cells selectively accumulate in human ovarian carcinomas to limit type I immunity. *Cancer Res* **72**(17): 4351–4360.
- Rody A, Holtrich U, Pusztai L, Liedtke C, Gaetje R, Ruckhaeberle E, Solbach C, Hanker L, Ahr A, Metzler D, Engels K, Karn T, Kaufmann M (2009) T-cell metagene predicts a favourable prognosis in oestrogen receptor-negative and HER2-positive breast cancers. *Breast Cancer Res* **11**(2): R15.
- Sakaguchi S, Yamaguchi T, Nomura T, Ono M (2008) Regulatory T cells and immune tolerance. *Cell* **133**(5): 775–787.
- Salama P, Phillips M, Griew F, Morris M, Zeps N, Joseph D, Platell C, Iacopetta B (2009) Tumour-infiltrating FOXP3+ T regulatory cells show strong prognostic significance in colorectal cancer. *J Clin Oncol* **27**(2): 186–192.
- Schmidt M, Bohm D, von Torne C, Steiner E, Puhl A, Pilch H, Lehr HA, Hengstler JG, Kolbl H, Gehrmann M (2008) The humoral immune system has a key prognostic impact in node-negative breast cancer. *Cancer Res* **68**(13): 5405–5413.
- Shevach EM (2009) Mechanisms of foxp3+ T regulatory cell-mediated suppression. *Immunity* **30**(5): 636–645.
- Teschendorff AE, Miremadi A, Pinder SE, Ellis IO, Caldas C (2007) An immune response gene expression module identifies a good prognosis subtype in oestrogen receptor negative breast cancer. *Genome Biol* **8**(8): R157.
- West NR, Milne K, Truong PT, Macpherson N, Nelson BH, Watson PH (2011a) Tumour-infiltrating lymphocytes predict response to anthracycline-based chemotherapy in oestrogen receptor-negative breast cancer. *Breast Cancer Res* **13**(6): R126.
- West NR, Panet-Raymond V, Truong PT, Alexander C, Babinsky S, Milne K, Ross LA, Loken S, Watson PH (2011b) Intratumoural immune responses can distinguish new primary and true recurrence types of ipsilateral breast tumour recurrences (IBTR). *Breast Cancer (Auckl)* **5**: 105–115.
- Yan M, Jene N, Byrne D, Millar EK, O'Toole SA, McNeil CM, Bates GJ, Harris AL, Banham AH, Sutherland RL, Fox SB (2011) Recruitment of regulatory T cells is correlated with hypoxia-induced CXCR4 expression, and is associated with poor prognosis in basal-like breast cancers. *Breast Cancer Res* **13**(2): R47.
- Yoon HH, Orrock JM, Foster NR, Sargent DJ, Smyrk TC, Sinicrope FA (2012) Prognostic impact of FoxP3+ regulatory t-cells in relation to CD8+ T lymphocyte density in human colon carcinomas. *PLoS ONE* **7**(8): e42274.
- Zlobec I, Karamitopoulou E, Terracciano L, Piscuoglio S, Jezzi G, Muraro MG, Spagnoli G, Baker K, Tzankov A, Lugli A (2010) TIA-1 cytotoxic granule-associated RNA binding protein improves the prognostic performance of CD8 in mismatch repair-proficient colorectal cancer. *PLoS ONE* **5**(12): e14282.

This work is published under the standard license to publish agreement. After 12 months the work will become freely available and the license terms will switch to a Creative Commons Attribution-NonCommercial-Share Alike 3.0 Unported License.

Supplementary Information accompanies this paper on British Journal of Cancer website (<http://www.nature.com/bjc>)