

Curcumin–cyclodextrin complexes potentiate gemcitabine effects in an orthotopic mouse model of lung cancer

N Rocks¹, S Bekaert¹, I Coia², G Paulissen¹, M Gueders¹, B Evrard², J-C Van Heugen³, P Chiap³, J-M Foidart¹, A Noel¹ and D Cataldo^{*,1}

¹Laboratory of Tumor and Development Biology, GIGA-Research (Groupe Interdisciplinaire de Génoprotéomique Appliquée) – GIGA-Cancer and GIGA-I³, University of Liege and CHU of Liege, Sart-Tilman, 4000 Liege, Belgium; ²Laboratory of Pharmaceutical Technology, University of Liege and CHU of Liege, Sart-Tilman, 4000 Liege, Belgium; ³Department of Analytical Pharmaceutical Chemistry, Institute of Pharmacy, University of Liege and CHU of Liege, Sart-Tilman, 4000 Liege, Belgium

BACKGROUND: Overall clinical outcome for advanced lung cancer remains very disappointing despite recent advances in treatment. Curcumin has been reported as potentially active against cancer.

METHODS: Owing to poor curcumin solubility, we have used cyclodextrins (CD) as an excipient allowing a considerable increase of aqueous solubility and bioavailability of curcumin. The effects of solubilised curcumin have been evaluated in cell cultures as well as in an *in vivo* orthotopic lung tumour mouse model.

RESULTS: Cell proliferation was reduced while apoptosis rates were increased when lung epithelial tumour cells were cultured in the presence of curcumin–CD complexes. For *in vivo* experiments, cells were grafted into lungs of C57Bl/6 mice treated by an oral administration of a non-soluble form of curcumin, CDs alone or curcumin–CD complexes, combined or not with gemcitabine. The size of orthotopically implanted lung tumours was reduced upon curcumin complex administration as compared with treatments with placebo or non-solubilised curcumin. Moreover, curcumin potentiated the gemcitabine-mediated antitumour effects.

CONCLUSION: Our data demonstrate that curcumin, when given orally in a CD-solubilised form, reduces lung tumour size *in vivo*. *In vitro* experiments show impaired tumour cell proliferation and increased cell apoptosis. Moreover, our data underline a potential additive effect of curcumin with gemcitabine thus providing an efficient therapeutic option for antilung cancer therapy.

British Journal of Cancer (2012) **107**, 1083–1092. doi:10.1038/bjc.2012.379 www.bjcancer.com

Published online 28 August 2012

© 2012 Cancer Research UK

Keywords: curcumin; cyclodextrin; lung cancer; gemcitabine; cell cycle

Lung cancer is an aggressive and progressive deadly disease with few treatment options and poor overall survival in non-surgical stages. Despite recent advances in the treatments for other cancer types, 5-year combined survival rates of patients bearing lung cancer of all stages is still only 16% (American Cancer Society, 2010). Gemcitabine is widely used as a chemotherapeutic agent and has been approved by the FDA to be administered in combination with cisplatin in first- or second-line treatments of patients with locally advanced or metastatic non-small-cell lung cancers. However, the overall response to existing treatments is very often limited and several side effects, such as fatal pulmonary toxicity, have been described for treatment regimens including gemcitabine (Binder *et al*, 2011; Nasrallah *et al*, 2012).

Some nutraceuticals derived from fruits, vegetables or spices have demonstrated to have extra health benefits. One of those agents that could have a future as a new drug for anticancer treatment is curcumin (diferuloylmethane). Curcumin, a yellow-coloured polyphenol, is the main curcuminoid of the Indian spice turmeric (*Curcuma longa*), and some analogues such as demethoxycurcumin, bisdemethoxycurcumin as well as cyclocurcumin have also been described. While this natural agent has been widely used as a spice in Indian cuisine or in ayurvedic medicine in South-East

Asiatic countries, extensive research has been conducted within the last years and has reported anti-angiogenic, anticancer and antimetastatic effects for curcumin and derived molecules in *in vivo* animal models (Chen *et al*, 2008; Kunnumakkara *et al*, 2008; Shankar *et al*, 2008; Ravindran *et al*, 2009). Moreover, curcumin has recently been found to inhibit cancer cell proliferation and to induce apoptosis of cancer cells *in vitro* (Yodkeeree *et al*, 2009; Saha *et al*, 2010; Yadav *et al*, 2010). Notably, curcumin-based treatments have not shown any significant toxic side effects.

However, natural curcumin is unstable in the gastrointestinal tract and insoluble in water leading to a very poor bioavailability. Therefore clinical studies to eventually observe beneficial effects require administering very high doses of curcumin (Kanai *et al*, 2011). To overcome this extremely poor aqueous solubility, we have developed curcumin–cyclodextrin (CD) complexes that remarkably enhance curcumin solubility. Cyclodextrins are cyclic glucose polymers that bind hydrophobic molecules and form stable hydrophilic complexes with chemicals, enhancing thereby their water solubility (Evrard *et al*, 2004). The purpose of the present study was to evaluate the *in vitro* and *in vivo* effects of a soluble form of curcumin and to investigate the molecular mechanisms of lung cancer cell sensitisation to gemcitabine upon curcumin exposure. Our results demonstrate that mice treated with gemcitabine and curcumin–CD complexes display a reduction in size of orthotopically implanted lung tumours. We also provide

*Correspondence: Dr D Cataldo; E-mail: didier.cataldo@ulg.ac.be
Revised 20 July 2012; accepted 26 July 2012; published online 28 August 2012

in vitro evidence that CD-curcumin complexes reduce cell proliferation rates and increase apoptosis rates, through a regulation of cell cycle protein production.

MATERIALS AND METHODS

Materials

Curcumin (93% purity) was purchased from Sigma-Aldrich (St Louis, MO, USA). Hydroxypropyl- γ -CD (HP γ -CD or Cavasol W8 HP) (DS: 0.6) was obtained from Wacker-Chemie GmbH (Munich, Germany). Citric acid and acetonitril were of analytical grade.

Formulation of curcumin-HP γ -CD inclusion complexes or curcumin suspension solution

Hydroxypropyl- γ -CD was dissolved in a pH 7 isotonic sodium citrate solution to obtain a concentration of 50 mM. Curcumin HP γ -CD inclusion complexes were prepared by adding an excess of curcumin into the HP γ -CD solution. The mixture, stirred overnight at ambient temperature to form water-soluble inclusion complexes, was filtered through a 0.22- μ m filter to remove curcumin excess and sterilise the solution. Filtrate aliquots of curcumin solutions were quantified by a validated HPLC method and diluted to reach 1 mM of curcumin (Evrard *et al*, 2004). The curcumin suspension was prepared by adding curcumin in aseptic conditions into a sterile isotonic sodium citrate solution.

Solutions used for cell culture were made of HP γ -CD (2.5 mM or 5 mM) or curcumin-CD complexes containing 50 μ M curcumin-2.5 mM HP γ -CD or curcumin 100 μ M-5 mM HP γ -CD. Solution used for *in vivo* injection was curcumin 1 mM-50 mM HP γ -CD.

Cell culture

Murine Lewis Lung Carcinoma cells (LLC or LL/2-luc-M38 Bioware Cell Line) stably transfected with luciferase gene were purchased from Caliper Life Sciences, Inc. (Teralfene, Belgium). The BZR cells were obtained from American Type Culture Collection (Manassas, VA, USA). Lewis Lung Carcinoma and BZR cells were grown at 37 °C, in 5% CO₂, in Dulbecco's Modified Eagle Medium (Invitrogen Corp./Life Technologies, Gent, Belgium) supplemented with 10% fetal bovine serum and 2 mmol l⁻¹ L-glutamine, penicillin-streptomycin (100 IU ml⁻¹-100 μ g ml⁻¹) (Invitrogen Corp./Life Technologies). Medium used to culture LLC cells was enriched with neomycin (G418, 0.02 mg ml⁻¹; Life Technologies, Grand Island, NY, USA).

Orthotopic implantation of lung tumour cells

Male C57Bl/6 mice (Charles River, Wilmington, MA, USA) (6-8 weeks) were used for orthotopic LLC cell injection. A final volume of 100 μ l of serum-free medium containing 2×10^6 luciferase-expressing LLC cells was instilled into the trachea of mice previously anaesthetised with a xylazine-ketamine mixture ($n = 8$ mice per treatment group). Lung tumour growth was assessed regularly using the bioluminescence *in vivo* Imaging System IVIS 200 (Xenogen Corp., Alameda, CA, USA). Twelve minutes before acquiring *in vivo* images, animals were injected intraperitoneally (i.p.) with 100 μ l of D-luciferin potassium salt solution (Promega, Leiden, The Netherlands) diluted in PBS (0.03 g ml⁻¹) and anaesthetised in a plexiglas chamber using a mixture of 2.5% isoflurane/oxygen. A digital grayscale image of the animal placed in dorsal position was first acquired followed by the acquisition of a pseudocolour image representing the detected photons emerging from luciferase activity of LLC cells. Mice were imaged on days 7, 10, 14, 18 and 21 after tracheal instillation of cells. Quantification of bioluminescence images was performed by determining 'regions of interest' (ROI) in the lung region of the animal and measuring

bioluminescence intensity using Living Image software (Caliper Life Sciences, Inc.). At the end of the experiment, animals were killed and lung tissues were resected. A first half volume of the lung tissues was fixed in 4% paraformaldehyde and embedded in paraffin for histological analysis. The other half of lung tissues was snap-frozen in liquid nitrogen until used. Experiments were approved by the animal ethical committee of the University of Liege.

Experimental protocol of treatment procedures

Mice were randomised in five following experimental groups according to the given treatment ($n = 8$ mice per group): HP γ -CD, non-soluble curcumin, gemcitabine, curcumin-HP γ -CD or curcumin-HP γ -CD combined with gemcitabine. After intratracheal lung tumour cell instillation, animals were treated with either vehicle alone (HP γ -CD) (5 days per week, oral feeding with 93 mg kg⁻¹), a non-soluble form of curcumin (NSC) (5 days per week, oral feeding with 3 mg kg⁻¹ curcumin), gemcitabine (2 days per week, i.p. injection with 40 mg kg⁻¹), curcumin-HP γ -CD complexes (5 days per week, oral feeding with 3 mg kg⁻¹ curcumin) or curcumin-HP γ -CD complexes combined with gemcitabine injections (5 days per week, oral feeding with 3 mg kg⁻¹ curcumin; 2 days per week, i.p. injection with 40 mg kg⁻¹, respectively). Treatment of mice has been performed until killing of animals. Before instillation of tumour cells, mice were pretreated for 3 days with corresponding treatments.

Mass spectrometry - extraction method

Serum levels of curcumin or its metabolites have been analysed by LC-MS. For this, curcumin and tetrahydrocurcumin were extracted from mouse serum using ethyl acetate as described before (Zhongfa *et al*, 2012). The LC-MS/MS parameters were fixed as described by Zhongfa *et al*. Serum samples of curcumin-CD- or placebo-treated mice were analysed by the multiple reaction monitoring mode (Zhongfa *et al*, 2012).

Immunohistochemistry

Immunohistochemistry was performed on 5- μ m lung tissue sections. Sections were deparaffinised, and after unmasking antigens, treated with 3% H₂O₂ in order to quench endogenous peroxidase activity. Blockade of nonspecific binding was performed by incubation with PBS/bovine serum albumin (Fraction V, Thermo Fisher Scientific, Geel, Belgium). Sections were incubated with a rat monoclonal anti-KI67 (clone MIB-1, 1:100, Dako, Glostrup, Denmark). After several washes, slides were incubated with rabbit anti-rat biotin-coupled secondary antibody (Dako, 1:400) followed by incubation with streptavidin/horseradish peroxidase (HRP) complex (Dako, 1:500). Peroxidase activity was revealed using the 3-3' diaminobenzidine hydrochloride kit (Dako). Slides were counterstained with haematoxylin and mounted.

Immunostainings were quantified using Image J program (NIH, Bethesda, MA, USA). Briefly, image RGB colours were split and grey scale intensities corresponding to KI67 staining were measured in lung tumours. Results are expressed as the ratio between the surface of KI67-positive tumour area and the total surface of tumour tissue analysed. A minimum of eight slides per animal of each treatment group was examined and used for quantification.

Lung tumour size was determined on haematoxylin-eosin paraffin sections by measuring lung tumour area and reporting it to the total size of lung tissues using Image J software.

Preparation of protein cell or tissue extracts

Cells (10⁶) were seeded in 100-mm-diameter Petri dishes (Falcon, Becton Dickinson, Lincoln Park, NJ, USA) in serum-containing medium for 24 h. Curcumin (50 μ M or 100 μ M) -CD (2.5 mM or

5 mM) complexes or vehicle alone (5 mM) were added to standard culture medium. After 24 h of culture, total protein cell extracts were prepared from cell monolayer by incubation for 15 min in radio-immune precipitation assay buffer (50 mM Tris-HCl, pH 7.4; 150 mM NaCl; 1% Nonidet P40; 1% Triton X-100; 1% sodium deoxycholate; 0.1% SDS; 5 mM iodoacetamide; 2 mM phenylmethylsulphonyl fluoride). After centrifugation, supernatants were stored at -20°C . Total proteins were extracted from tumour tissues by incubating the crushed tissue with a lysis buffer (40 mM Tris, 20% sucrose) containing 2% SDS. Protein concentrations were determined using DC protein Assay kit (Bio-Rad Laboratories, Hercules, CA, USA).

Proliferation assay

Lewis Lung Carcinoma or BZR cells were seeded in sixplicate in 96-well plates at a density of 1250 cells per well. After adhesion, cells were cultured in standard culture medium or treated with various concentrations of curcumin-CD complexes and/or gemcitabine ($1\text{--}10\text{ ng ml}^{-1}$) or with vehicle alone as control for 24 and 48 h. Cell proliferation was evaluated by measuring 5-bromo-2'-deoxyuridine incorporation during DNA synthesis, following the manufacturer's instructions (Roche Diagnostics GmbH, Mannheim, Germany). Results are expressed as incorporation of BrDU measured by chemoluminescence (absorbance A450–A690nm).

Cell cycle analysis

Lewis Lung Carcinoma cells were cultured in standard culture medium supplemented with different concentrations of curcumin ($50\ \mu\text{M}$ or $100\ \mu\text{M}$)-CD (2.5 mM or 5 mM) complexes or with the vehicle alone (5 mM) for 24 h. The epithelial layer was dissociated as described before (Rocks *et al*, 2008a) and washed twice in PBS. Cell suspension was mixed in spermine tetrahydrochloride detergent as described by the manufacturer (BD Cycletest Plus DNA Reagent Kit; BD Biosciences, Erembodegem, Belgium). An equal volume of RNase A and trypsin inhibitor was added to the samples and incubated at room temperature. Finally, cell suspensions were mixed to propidium iodide (PI), incubated at 4°C and cell cycle phases were analysed on FACS Calibur (BD Biosciences).

Flow cytometry

Lewis Lung Carcinoma cells were cultured for 24 h in standard culture medium supplemented with different concentrations of curcumin ($50\ \mu\text{M}$ or $100\ \mu\text{M}$)-CD (2.5 mM or 5 mM) complexes or with the vehicle alone (5 mM). The epithelial layer was dissociated with PBS-EDTA (5 mM) and cells were detached by scraping (Rocks *et al*, 2008a). Lewis Lung Carcinoma cells were washed with PBS and then centrifuged and resuspended in $1 \times$ Binding Buffer (FITC Annexin V Apoptosis Detection Kit I, BD Biosciences). After incubation with FITC Annexin V and PI at room temperature, cells were analysed by flow cytometry using FACS Canto II (10 000 events) (BD Biosciences).

Western blot

Samples (cell or tissue lysates) ($20\ \mu\text{g}$ of total protein extracts) were separated under reducing conditions on polyacrylamide gels and transferred on PDVF membrane (NEN, Boston, MA, USA). After blocking in phosphate-buffered saline containing 10% non-fat milk and Tween 20 (0.05%), membranes were incubated with the primary antibody: anti-poly (ADP-ribose) polymerase (PARP) rabbit monoclonal antibody, anti-cyclin B1 mouse monoclonal antibody, antiphospho-cyclin B1 rabbit polyclonal antibody and antiphospho-cdc2 (Thr161) rabbit polyclonal antibody (Cell Signaling, Leiden, The Netherlands). Immunoreactive proteins were visualised using the corresponding secondary antibody conjugated with HRP (DAKO) and the enhanced

chemiluminescence detection kit (PerkinElmer Life Sciences, Boston, MA, USA). As loading control, actin levels were determined. Results are expressed as ratio between measured protein levels and corresponding actin levels.

Statistical analysis

Statistical differences were assessed between *in vivo* or *in vitro* experimental groups using Mann-Whitney test. $*P < 0.05$, $**P < 0.01$, $***P < 0.001$.

RESULTS

Curcumin-CD complexes display antitumour activity and potentiate the activity of gemcitabine in an orthotopic lung tumour mouse model

The effects of curcumin-CD complexes alone (curcumin-HP γ -CD) or in combination with gemcitabine were examined on the growth of orthotopically implanted lung tumours *in vivo*. The experimental groups used herein included mice ($n = 8$ per group) treated with either (i) vehicle (HP γ -CD), or (ii) NSC (i.e., suspension of curcumin), or (iii) gemcitabine or (iv) curcumin complexed with HP γ -CD (curcumin-HP γ -CD), or (v) the association of curcumin-HP γ -CD with gemcitabine (curcumin-HP γ -CD + gemcitabine) (Figure 1A). After three consecutive days of pretreatment, LLC cells were orthotopically implanted into lung parenchyma and then corresponding treatments were continued during the whole experiment (for 5 days per week) (Figure 1A). Lung tumour development was monitored on days 7, 10, 14, 18 and 21 after tumour cell injection using IVIS imaging. Quantification of bioluminescence imaging pointed to a reduced lung tumour growth when mice were treated with gemcitabine or curcumin-CD complexes as compared with mice treated with vehicle alone or non-soluble curcumin ($*P < 0.05$) (Figure 1B right and left panels). Interestingly, lung tumour development was almost completely abolished when mice were treated by the association of curcumin-HP γ -CD and gemcitabine ($***P < 0.001$ vs vehicle alone or non-soluble curcumin). Tumour incidence rates were assessed in two individual experiments using bioluminescence imaging and showed that mice treated with gemcitabine and/or curcumin-CD complexes displayed lower tumour incidence rates than mice treated with vehicle alone or non-soluble curcumin (Figure 1C, day 7: $*P < 0.05$ or $**P < 0.01$ vs HP γ -CD; day 14: $*P < 0.05$ or $**P < 0.01$ vs gemcitabine or curcumin-HP γ -CD or gemcitabine-curcumin-HP γ -CD). Interestingly, on day 21, tumour incidence rates were below 45% in the group of mice treated with combined curcumin-HP γ -CD and gemcitabine, intermediate (60–70%) in mice treated with each chemotherapeutic alone, and reached 100% in groups treated with vehicle alone or non-soluble curcumin (Figure 1C, $^{\text{P}}P < 0.01$ vs gemcitabine-curcumin-HP γ -CD or $**P < 0.01$ vs gemcitabine or curcumin-HP γ -CD or gemcitabine-curcumin-HP γ -CD).

The lung area occupied by tumour cells was quantified at day 21 on eight randomly selected haematoxylin-eosin sections per animal in each experimental group (Figure 1D). Lung tumour area/total lung area ratio was significantly lower in mice treated with curcumin-HP γ -CD-gemcitabine than in those of all other groups ($^{\text{P}}P < 0.001$ vs other groups). Moreover, groups treated with curcumin-HP γ -CD or gemcitabine displayed smaller tumour surfaces than groups treated with HP γ -CD or NSC ($***P < 0.001$ vs curcumin-HP γ -CD or gemcitabine or curcumin-HP γ -CD-gemcitabine) (Figure 1E).

Analysis of pooled serum samples by mass spectrometry reveals the presence of tetrahydrocurcumin

In order to investigate whether curcumin absorption is higher when it has been complexed to CDs and to understand its higher

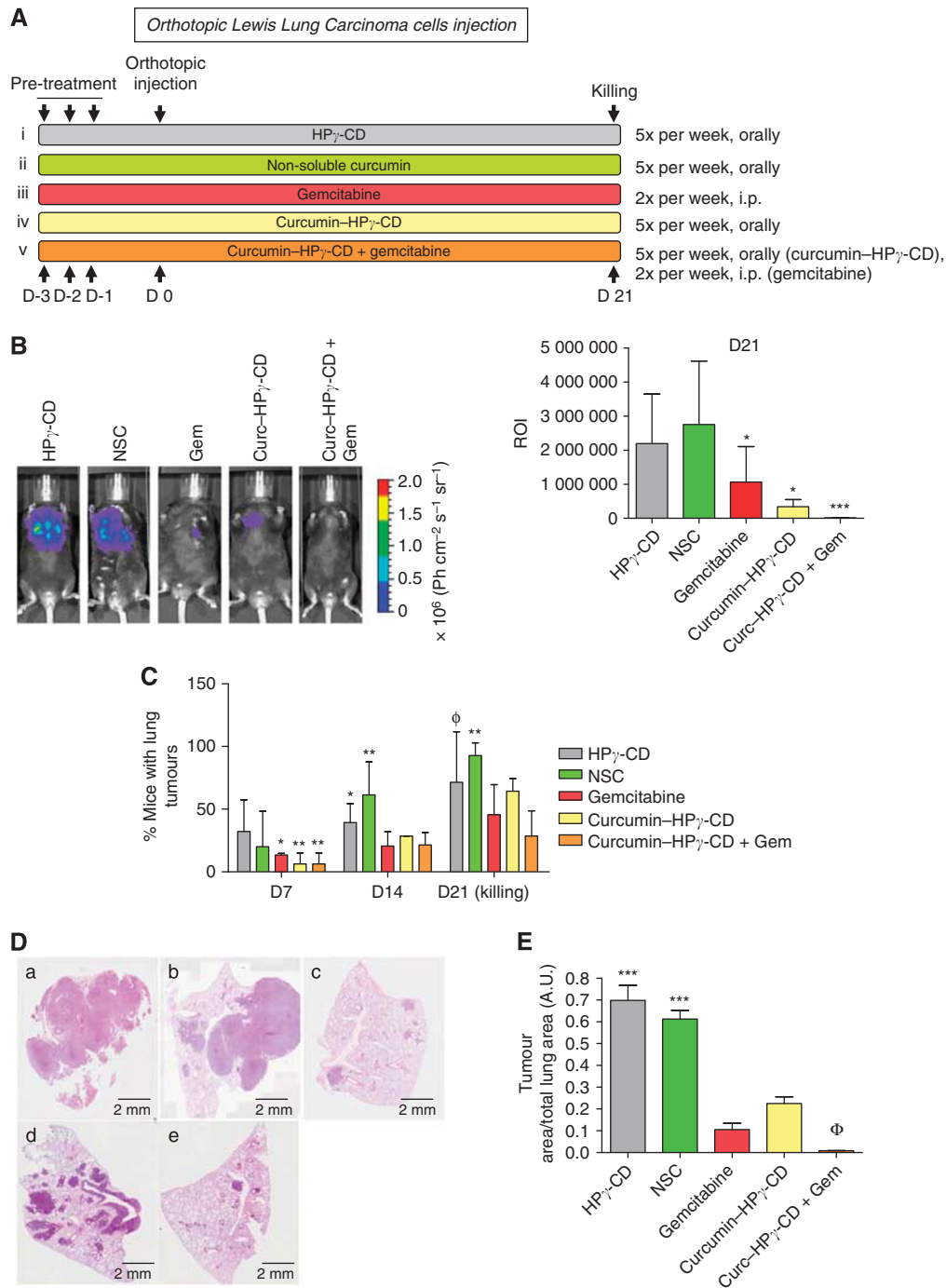


Figure 1 Curcumin-CD complexes potentiate the effects of gemcitabine and reduce growth of orthotopically implanted lung tumours in mice. **(A)** Experimental protocol used in this study. Hydroxypropyl- γ -CD (93 mg kg^{-1}), non-soluble curcumin (NSC; 3 mg kg^{-1}), curcumin-CD complexes (3 mg kg^{-1}) are given orally daily while gemcitabine is given twice per week (40 mg kg^{-1}) i.p. Treatment is started 3 days before orthotopic instillation of LLC cells (D0) and continued until killing. **(B)** Left panel: monitoring of lung tumour growth using Xenogen IVIS in animals (here: 21 days after injection of LLC cells). Right panel: bioluminescence quantification of lung tumours on whole animals by determining ROI around lung area and measuring luciferase activity in lungs. * $P < 0.05$, *** $P < 0.001$ vs HP γ -CD or non-soluble curcumin. **(C)** Incidence of lung tumours in mice. Incidence of lung tumours is reduced in mice treated with curcumin-gemcitabine combination * $P < 0.05$ vs HP γ -CD (day 7) or vs gemcitabine or curcumin-HP γ -CD (day 14); *** $P < 0.01$ vs HP γ -CD (day 7) or vs gemcitabine or curcumin-HP γ -CD or gemcitabine-curcumin-HP γ -CD (day 14 or day 21); $\phi P < 0.01$ vs curcumin-HP γ -CD-gemcitabine. **(D)** Representative haematoxylin-eosin (H-E) sections of lung tissues at autopsy. Magnification $\times 200$. **(E)** Tumour surfaces were assessed by measuring the ratio between the area of lung tumour and total lung tissue area on eight H-E sections per mouse in each treatment group. Results are expressed as the mean lung tumour area/total lung area \pm s.e.m. (a.u.) and are representative of two experiments performed individually ($n = 8$ mice per treatment group).

efficiency against lung tumour development, we performed a mass spectrometry analysis on serum samples of animals treated with curcumin-CD or native curcumin. Mass spectrometry analysis revealed the presence of tetrahydrocurcumin traces in

serum of mice treated with curcumin-CD complexes, which are barely or not detectable in non-soluble curcumin-treated mice suggesting an enhanced bioavailability of the complexed form of curcumin (Figure 2). Those results might explain the

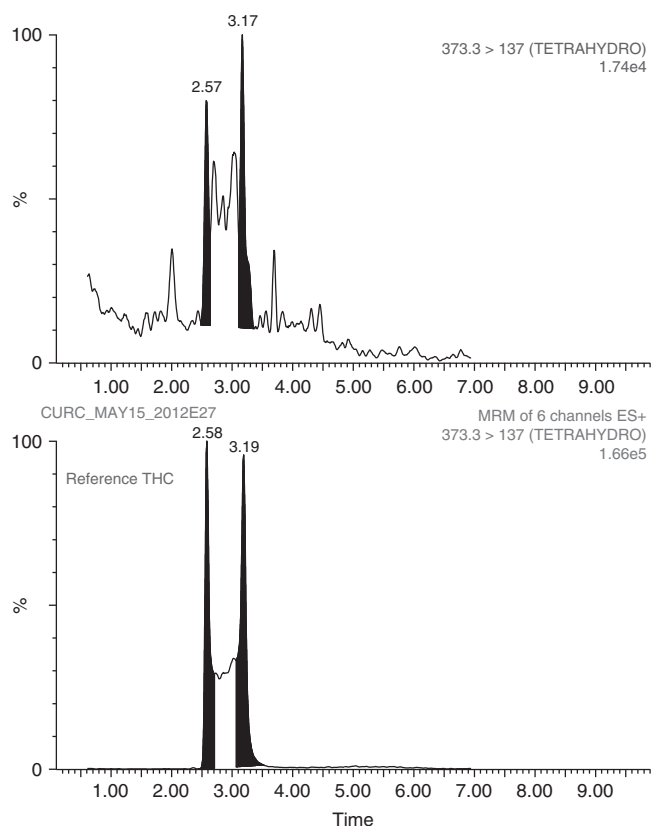


Figure 2 Representative mass spectrometry chromatograms of extracts of serum from mice that have been treated with curcumin-CD complexes. Tetrahydrocurcumin spectra measured in those sera have been compared with a spectrum emitted by native tetrahydrocurcumin.

higher efficiency of curcumin against lung tumours in the present study.

Cyclodextrin-complexed curcumin inhibits lung tumour cell proliferation *in vitro* as well as *in vivo*

In order to further investigate the mechanisms underlying the antitumoral effects of curcumin-HP γ -CD complexes, we evaluated the proliferation index in lung tumours by KI67 immunostaining on lung tissue sections (Figure 3A). The association of curcumin-HP γ -CD and gemcitabine resulted in a two-fold reduction of proliferation index in mouse lung tumours as compared with lung tumours in mice treated by vehicle only or non-soluble curcumin ($*P=0.027$ vs vehicle; $P=0.0456$ vs non-soluble curcumin) (Figure 3B). No difference was observed between groups treated with curcumin-HP γ -CD or gemcitabine alone and vehicle or non-soluble curcumin groups ($P>0.05$).

We next investigated the *in vitro* proliferation of LLC cells cultured in standard culture conditions or in the presence of different concentrations of curcumin (10, 20, 50 and 100 μM) complexed with HP γ -CD or of HP γ -CD alone (0.5, 1, 2.5 and 5 mM). A dose-dependent reduction of tumour cell proliferation was observed after 24 and 48 h of treatment with curcumin-CD complexes, but not with CD alone (HP γ -CD) ($**P<0.01$ vs corresponding control) (Figure 4A and B). Similar results have been obtained for BZR human lung epithelial tumour cells, where treatment with curcumin (10, 20 and 50 μM)-CD (0.5, 1 and 2.5 mM) complexes during 48 h reduced cell proliferation *in vitro* (data not shown). Interestingly, *in vitro* proliferation of LLC and BZR cells exposed to the combination of curcumin-CD complexes and gemcitabine (5 or 10 ng ml $^{-1}$) was significantly lower as compared

with cell proliferation when exposed to corresponding concentrations of gemcitabine or curcumin-CD ($**P<0.001$ vs corresponding concentration of gemcitabine or curcumin-CD alone) (Figure 4B).

Cell cycle progression is arrested in G2-phase when cells are treated with curcumin-CD complexes

As KI67 is a protein present in all active phases of the cell cycle, and in order to unveil which cell cycle phase is affected by curcumin treatment, we have analysed the distribution of cells in different phases of cell cycle *in vitro* using BD Cycletest Plus DNA Reagent Kit. Treatment of cells in the presence of curcumin-CD complexes significantly increased the proportion of cells in G2 phase when compared with treatment of cells with CDs alone or in standard culture medium (Figure 4C-G and H). The percentage of cells in S-phase was between 40-60% (Figure 4H).

Curcumin-CD complexes induce apoptosis of lung tumour cells *in vitro*

Tumour development is dependent on alterations in regulatory circuits that govern normal cell proliferation and apoptosis. Genes implicated in cell cycle arrest have already been largely described to be associated to apoptosis induction in cells (Pawlik and Keyomarsi, 2004). In order to investigate the putative effects of curcumin combined to CDs on regulatory cellular circuits, early or late apoptosis rates were assessed *in vitro* by flow cytometry using FITC-conjugated annexin V and PI double staining (Figure 5A-E). Treatment of cells with curcumin-HP γ -CD increased the percentage of annexin V-positive LLC cells (referring to early apoptosis) from 0.5% (control) or 0.4% (HP γ -CD) to 2.7% and 5.7% (for 50 and 100 μM curcumin, respectively) (Figure 5A-D). Moreover, the number of cells positive for both stainings (referring to late apoptosis) reached 35% when cells were cultured in the presence of higher concentrations of curcumin (100 μM) when compared with control (1.2%) or vehicle alone (8.3%) (Figure 5A, B and D). Interestingly, cell treatment with a combination of curcumin (50 μM)-CD (2.5 mM) and gemcitabine increased the percentage of cells undergoing early apoptosis (10.4%) as well as late apoptosis (68 vs 9.5% when treated with curcumin (50 μM)-HP γ -CD (2.5 mM) alone) (Figure 5E).

Poly (ADP-ribose) polymerase is a nuclear polymerase involved in DNA repair in response to environmental stress. Cleavage of PARP is performed by ICE-like caspases and results in its inactivation leading to cellular disassembly. In the present study, cleaved PARP/total PARP ratios were significantly more important in cells cultured with curcumin-HP γ -CD ($*P<0.05$ vs HP γ -CD (2.5 mM); $**P<0.01$ vs HP γ -CD (5 mM)) (Figure 5F). Interestingly, highest cleaved PARP/total PARP ratios were found when combining treatments with CD-complexed curcumin and gemcitabine ($^{\text{P}}P<0.01$ vs HP γ -CD (2.5 mM) or curcumin (50 μM)-CD (2.5 mM)) (Figure 5F). Similar results were obtained for BZR human epithelial lung tumour cells. Indeed, culture of BZR cells with increasing concentrations of curcumin-HP γ -CD complexes increased cleaved PARP/total PARP ratios in a dose-dependent way (data not shown).

Expression of genes controlling cell cycle and apoptosis is modulated in mice treated with curcumin-HP γ -CD complexes and gemcitabine

In order to confirm *in vitro* results, PARP levels were measured in lung tissues of mice bearing tumours. Interestingly, highest levels of cleaved PARP protein and consequently highest tumour cells apoptosis rates were found in lung tissues of mice treated with a combination of gemcitabine and curcumin-HP γ -CD complexes ($P<0.01$ when compared with mice treated with

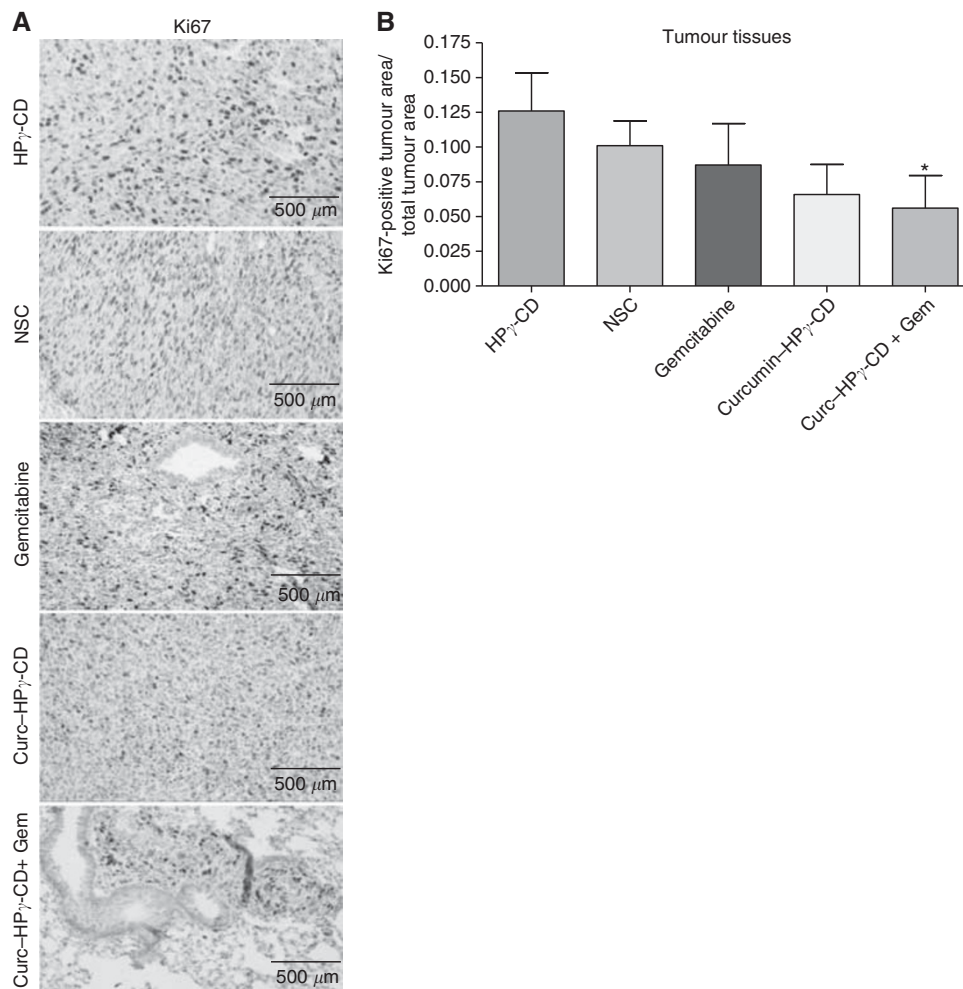


Figure 3 Curcumin-CD complexes inhibit lung tumour cell proliferation *in vivo*. **(A)** Immunohistochemical analysis of Ki67 marker in lung tumours. Magnification $\times 400$. **(B)** Quantification of Ki67 staining in lung tumours. Ki67-positive area in lung tumours is reported to total area of lung tumours. Results are expressed as mean \pm s.e.m. ($P=0.027$ for HP γ -CD vs curcumin-HP γ -CD-gemcitabine; $P=0.0456$ for non-soluble curcumin vs curcumin-HP γ -CD-gemcitabine) ($n=8$ mice per treatment group).

HP γ -CD, non-soluble curcumin or gemcitabine, $P<0.05$ when compared with mice treated with curcumin-CD complexes alone). Treatment with gemcitabine did not affect *per se* PARP cleavage in lung tissues when compared with control groups; while treatment of mice with curcumin-HP γ -CD complexes was a strong inducer of this cleavage (Figure 6A and B).

As *in vitro* treatment of lung tumour cells with curcumin-CD is linked to a dysregulation of cell cycle and induced G2/M cell cycle arrest, we studied the relationship between apoptosis induction and the expression of genes implicated in G2/M transition of cell cycle in mouse lung tissues. Interestingly, we found higher levels of phosphorylated cdc2 (threonine 161) in lungs of mice treated with HP γ -CD or non-soluble curcumin (NSC) ($*P<0.05$) when compared with mice treated with gemcitabine, curcumin or the combined treatment of curcumin-HP γ -CD and gemcitabine (Figure 6A and C). Levels of phospho-cyclin B1 were also higher in HP γ -CD and NSC-treated groups although not significant (Figure 6A and D).

DISCUSSION

Lung cancer still remains a major public health problem and treatment schemes including newly discovered drugs often do not reach expected benefits (Binder *et al*, 2011; Nasrallah *et al*, 2012).

New treatment options combining high efficacy against lung tumour cells and low toxicity against normal pulmonary tissues are therefore urgently needed.

In this work, we tested the potency of curcumin-CD complexes to affect growth of lung tumours orthotopically implanted in mice. Moreover, complementary effects of curcumin-CD complexes to those of gemcitabine, a drug widely used to treat patients bearing lung or pancreatic cancer, were also investigated in *in vivo* as well as *in vitro* experimental settings.

The present study is the first report showing that curcumin-CD complexes display significant beneficial effects on growth of lung tumours orthotopically implanted in mice. Indeed, after 21 days, lung tumours were found in 100% of animals treated with vehicle alone or with the NSC but only in about 70% of animals treated with curcumin-CD complexes or with gemcitabine and in $<45\%$ of animals treated with the association of curcumin-CD and gemcitabine. Moreover, lung tumour size was smaller in mice treated with the combination of curcumin-CD and gemcitabine as compared with all other treatment groups. These results are in accordance with the previous report of Kunnumakkara *et al* (2007) describing that curcumin potentiates the effects of gemcitabine in a murine pancreatic cancer model. It is worth noting that the results presented in our study also highlight the benefits of associating curcumin to CDs to form soluble complexes. Indeed, while most research groups were using doses reaching 1 kg^{-1} or

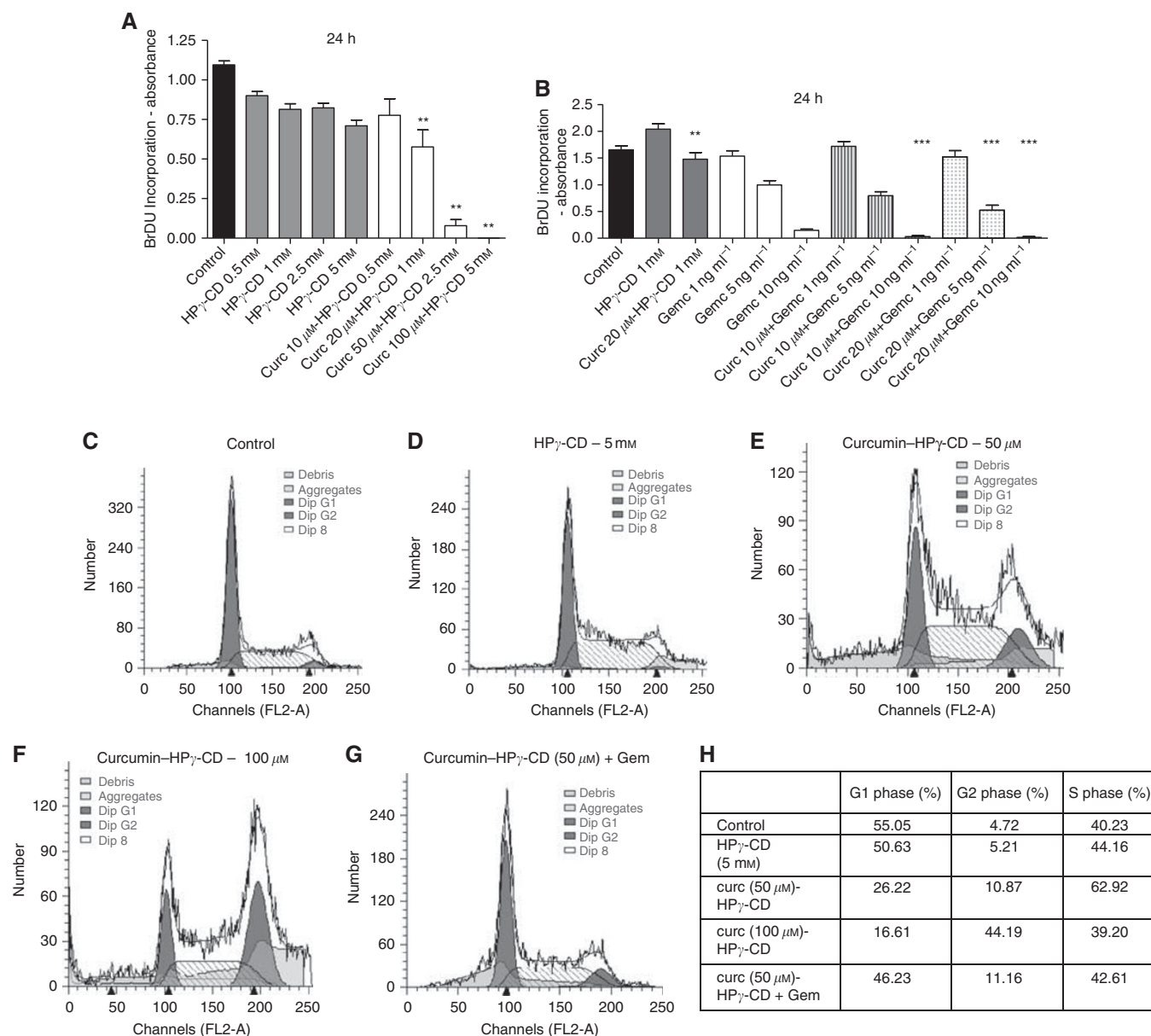


Figure 4 Curcumin-CD complexes affect lung tumour cell proliferation *in vitro* and induce cell cycle arrest in G2. **(A)** Cell proliferation assay (BrDU incorporation) showing a dose-dependent reduction of LLC cell proliferation when cells are cultured with increasing doses of curcumin-CD complexes ($P = 0.0022$ for curcumin 20, 50 and 100 μ M vs corresponding controls). These results are expressed as mean of sixplicates \pm s.e.m. and are representative of three independent experiments, where each experiment has been performed in sixplicates. **(B)** Cell proliferation assay (BrDU incorporation) showing a reduction of cell proliferation when LLC cells are cultured with curcumin-CD complexes and increasing doses of gemcitabine (** $P < 0.01$ vs HP γ -CD 1 mM; *** $P < 0.001$ vs corresponding controls). These results are expressed as mean of sixplicates \pm s.e.m. and are representative of two independent experiments, where each experiment has been performed in sixplicates. **(C-G)** Cells have been cultured with curcumin-CD alone or associated to gemcitabine for 24 h, stained with PI and cell cycle has been analysed by flow cytometry. **(H)** Table summarising percentages of cells present in G1 or G2 phases of cell cycle according to different treatment options. Results are representative of two individual experiments.

500 mg kg⁻¹ of a non-soluble curcumin (Kunnumakkara *et al*, 2007; Lin *et al*, 2007), or 40 mg kg⁻¹ or 25 mg kg⁻¹ of curcumin-liposome formulations (Wang *et al*, 2008; Sreekanth *et al*, 2011), doses of curcumin used in our study were significantly lower (3 mg kg⁻¹). These results underline the importance of solubilising curcumin by forming complexes with CDs, therefore improving the bioavailability of curcumin. Indeed, levels of tetrahydrocurcumin have been measured by mass spectrometry in sera of mice treated with curcumin-CD while those were not present in sera of mice treated with non-solubilised curcumin. As cytotoxicity of CDs previously evaluated *in vitro* and *in vivo* is poor when given orally or by inhalation (Evrard *et al*, 2004), their

use to solubilise curcumin is not expected to cause respiratory or systemic side effects that would compromise the efficacy of curcumin or other drugs used to treat lung cancer patients. Moreover, healthy mice daily fed or inhaled with curcumin-CD complexes during 4 weeks did not show any signs of toxicity or inflammation in the lung, liver or renal tissues (data not shown). Indeed, the lung, liver and kidney histology as well as blood urea measurements were strictly normal. Pulmonary functions assessed by measuring bronchial hyperresponsiveness as well bronchoalveolar lavage counts also did not display any abnormalities.

Proliferation of lung tumour cells was reduced in cohorts of mice treated with a combined therapy of curcumin-CD (given

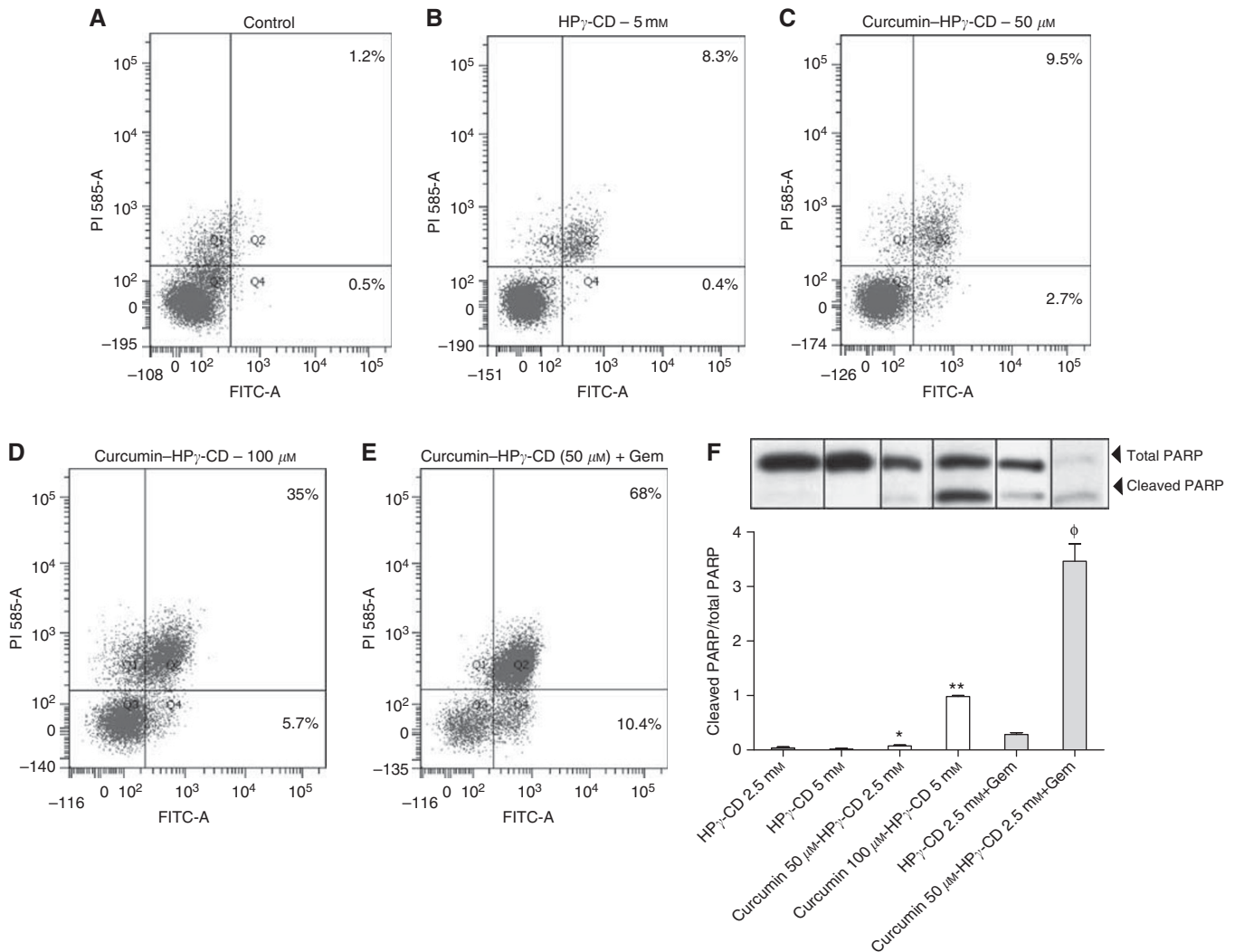


Figure 5 Induction of apoptosis by curcumin-CD. (**A–E**) Cells have been cultured in the presence of curcumin-CD alone or with gemcitabine for 24 h, stained with annexin V and PI, and apoptosis rates (%) have been evaluated by flow cytometry. Results are representative of three independent experiments. (**F**) PARP levels have been evaluated by western Blot. Lewis Lung Carcinoma cells have been cultured with various concentrations of curcumin-CD complexes alone or with gemcitabine for 24 h. Results are expressed as ratio of cleaved PARP and total PARP levels \pm s.e.m. and are representative of two independent experiments performed in duplicates.

orally) and gemcitabine (administered i.p.) when compared with HP γ -CD- and NSC-treated groups. *In vitro* proliferation of LLC cells in culture medium enriched with curcumin-CD was reduced in a dose-dependent way showing that curcumin-CD complexes were able *per se* to influence tumour cell behaviour. However, *in vivo*, the use of curcumin and gemcitabine combination was the most effective experimental condition for reducing tumour cell proliferation suggesting that if curcumin alone was not sufficient *in vivo* to significantly decrease cell proliferation, its association with cytotoxic drugs would allow reaching maximal efficiency in lung cancer treatment schemes. Many hypotheses could explain this complementary effect of soluble curcumin on gemcitabine. Indeed, *in vitro*, the experimental system is simplified as only tumour cells are used while, *in vivo*, a whole organism, composed of different cell types, blood vessels and tumour stroma, has to be considered as well as a specific tumour microenvironment (Noel *et al*, 2008; Rocks *et al*, 2008b). One has to consider production of factors that might counteract direct effects of curcumin complexes on tumour cells. As curcumin has the potency to inhibit nuclear factor κ B (Aggarwal *et al*, 2005), and taking into account that many chemotherapeutic agents induce the activation of this transcription

factor, a combined therapeutic strategy with curcumin could potentiate the effects of some chemotherapeutic agents by avoiding inappropriate activation of the NF κ B pathway (Duarte *et al*, 2010). Several reports have already pointed out the importance of such an association of curcumin with a chemotherapeutic agent to sensitise cancer cells to chemotherapy in animal xenograft models (Aggarwal *et al*, 2005; Kunnumakkara *et al*, 2007).

Regulation of cell cycle through cyclins, cyclin-dependent kinases (CDK) as well as their inhibitors is crucial for normal cell growth. In G1 and G2 phases of cell cycle, checkpoints are monitoring the accuracy of DNA synthesis and cell mitosis, respectively (Paulovich *et al*, 1997), and deregulation of cell cycle regulatory elements has been described for many tumours (Vermeulen *et al*, 2003). It has been previously reported that treatment schemes with curcumin display the potency to reduce levels of cyclin D1 or B1 and block progression of tumour cells through G1 or G2 phases with accordingly reduced proliferation and enhanced apoptosis rates (Aggarwal *et al*, 2007; Srivastava *et al*, 2007; Saha *et al*, 2010). *In vivo*, curcumin has the ability to reduce tumour cell proliferation by modulating the expression of

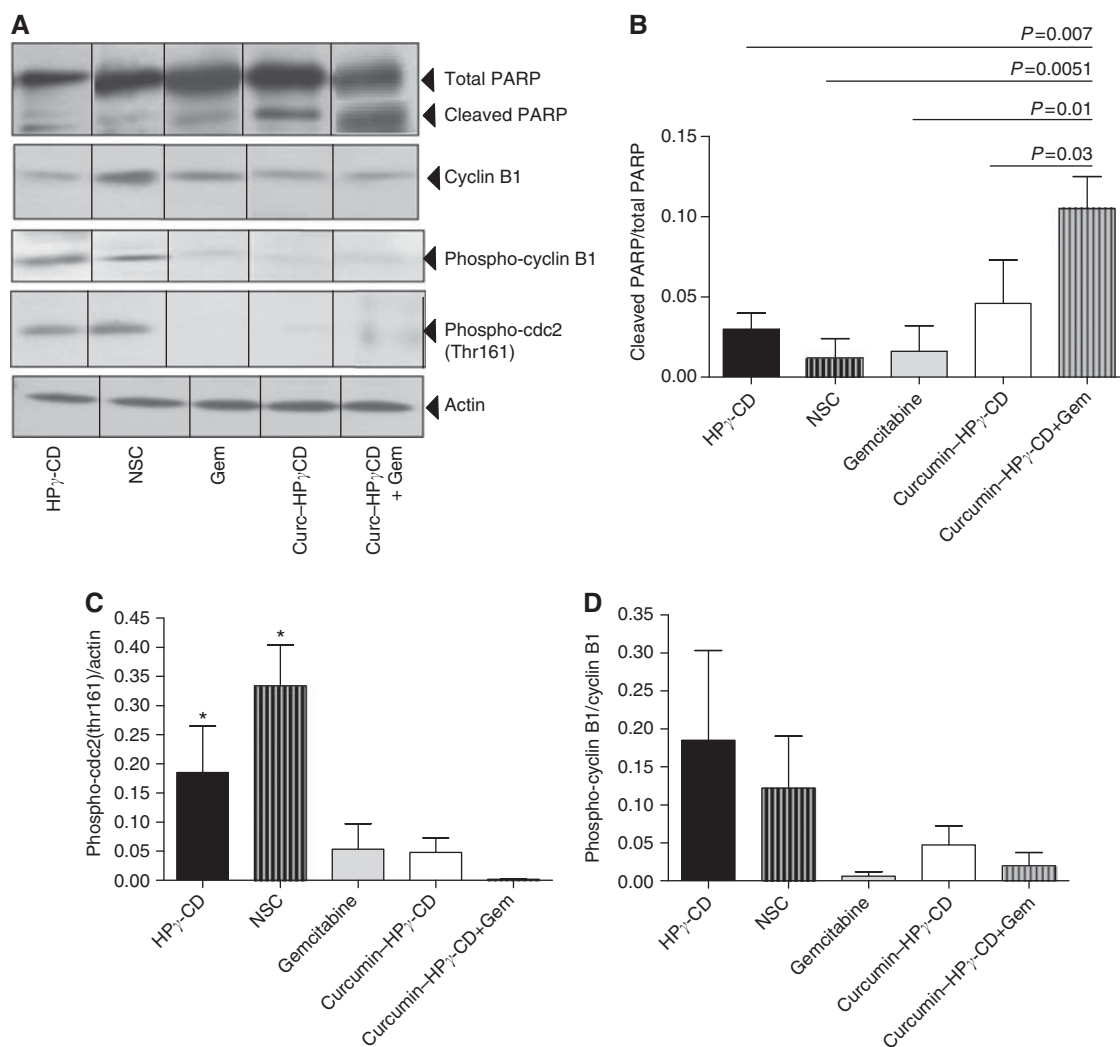


Figure 6 Curcumin-CD complexes affect the production of proteins related to apoptosis and cell cycle. **(A)** Western blot analyses have been performed to measure cleaved PARP, phospho-cyclin B1 and phospho-cdc2 levels. Actin is shown as loading control. **(B–D)** Quantification was performed by densitometric scanning. Results are expressed as mean \pm s.e.m. and are representative of two independent experiments.

transcription factors or cyclins (Lin *et al*, 2007; Shankar *et al*, 2008; Wang *et al*, 2008). In the present study, we afford the demonstration that cell cycle was arrested in G2 phase in cells treated with curcumin-CD complexes. In order to better understand which regulatory proteins are affected by curcumin treatment, we investigated the production of cell cycle-related proteins and found levels of phosphorylated cyclin B1 to be downregulated in lungs of mice treated with curcumin-CD complexes or with the association of curcumin-CD complexes and gemcitabine. In addition, levels of threonine 161-phosphorylated cdc2 (cell division control protein 2 homologue or CDK1) were reduced in curcumin-CDs-treated lungs. These results are in accordance with reduced proliferation and enhanced apoptosis rates measured in tumours of mice and suggest that alteration of cell cycle phases is responsible for reduced lung tumour development observed in these animals.

Our study provides evidence pleading for a potential new treatment strategy in lung cancer. Recent studies have described the potential usefulness of curcumin as adjuvant therapy in different types of cancer such as pancreatic, bladder or colorectal cancer (Kunnumakkara *et al*, 2007; Patel and Majumdar, 2009; Tharakan *et al*, 2010). Given our current data based on effects of curcumin-CD complexes on lung cancer development, one can hypothesise that curcumin could provide complementary effects to

conventional therapeutics in order to reach maximum treatment efficiency in patients. Its low intrinsic toxicity for non-diseased organs or cells implies that curcumin would specifically target lung tumour cells. However, association of curcumin with CD HP γ is mandatory to allow using a low-dose bioavailable curcumin that is preferable to reduce potential side effects.

ACKNOWLEDGEMENTS

This work was supported by grants from the Communauté française de Belgique (Actions de Recherches Concertées), the Fonds de la Recherche Scientifique Médicale, the Fonds National de la Recherche Scientifique (F.N.R.S., Belgium), the Fonds spéciaux de la Recherche (University of Liège), the Fondation Léon Fredericq (University of Liège), the D.G.T.R.E. from the « Région Wallonne », the Fondation against Cancer, European Union Framework Programs FP7-HEALTH-2007 (Microenvimet n°201279), the Interuniversity Attraction Poles Programme – Belgian Science Policy (Brussels, Belgium). N Rocks is a fellow of the Neoangio Programme (Région Wallonne, Belgium). We especially thank Christine Fink and Fabienne Perin for their excellent technical assistance.

REFERENCES

- Aggarwal BB, Banerjee S, Bharadwaj U, Sung B, Shishodia S, Sethi G (2007) Curcumin induces the degradation of cyclin E expression through ubiquitin-dependent pathway and up-regulates cyclin-dependent kinase inhibitors p21 and p27 in multiple human tumor cell lines. *Biochem Pharmacol* 73: 1024–1032
- Aggarwal BB, Shishodia S, Takada Y, Banerjee S, Newman RA, Bueso-Ramos CE, Price JE (2005) Curcumin suppresses the paclitaxel-induced nuclear factor-kappaB pathway in breast cancer cells and inhibits lung metastasis of human breast cancer in nude mice. *Clin Cancer Res* 11: 7490–7498
- American Cancer Society. Cancer Facts & Figures 2010. American Cancer Society: Atlanta, 2010
- Binder D, Hubner RH, Temmesfeld-Wollbruck B, Schlattmann P (2011) Pulmonary toxicity among cancer patients treated with a combination of docetaxel and gemcitabine: a meta-analysis of clinical trials. *Cancer Chemother Pharmacol* 68: 1575–1583
- Chen HW, Lee JY, Huang JY, Wang CC, Chen WJ, Su SF, Huang CW, Ho CC, Chen JJ, Tsai MF, Yu SL, Yang PC (2008) Curcumin inhibits lung cancer cell invasion and metastasis through the tumor suppressor HLJ1. *Cancer Res* 68: 7428–7438
- Duarte VM, Han E, Veena MS, Salvado A, Suh JD, Liang LJ, Faull KF, Srivatsan ES, Wang MB (2010) Curcumin enhances the effect of cisplatin in suppression of head and neck squamous cell carcinoma via inhibition of IKKbeta protein of the NFkappaB pathway. *Mol Cancer Ther* 9: 2665–2675
- Evrard B, Bertholet P, Gueders M, Flament MP, Piel G, Delattre L, Gayot A, Leterme P, Foidart JM, Cataldo D (2004) Cyclodextrins as a potential carrier in drug nebulization. *J Control Release* 96: 403–410
- Kanai M, Yoshimura K, Asada M, Imaizumi A, Suzuki C, Matsumoto S, Nishimura T, Mori Y, Masui T, Kawaguchi Y, Yanagihara K, Yazumi S, Chiba T, Guha S, Aggarwal BB (2011) A phase I/II study of gemcitabine-based chemotherapy plus curcumin for patients with gemcitabine-resistant pancreatic cancer. *Cancer Chemother Pharmacol* 68: 157–164
- Kunnumakkara AB, Anand P, Aggarwal BB (2008) Curcumin inhibits proliferation, invasion, angiogenesis and metastasis of different cancers through interaction with multiple cell signaling proteins. *Cancer Lett* 269: 199–225
- Kunnumakkara AB, Guha S, Krishnan S, Diagaradjane P, Gelovani J, Aggarwal BB (2007) Curcumin potentiates antitumor activity of gemcitabine in an orthotopic model of pancreatic cancer through suppression of proliferation, angiogenesis, and inhibition of nuclear factor-kappaB-regulated gene products. *Cancer Res* 67: 3853–3861
- Lin YG, Kunnumakkara AB, Nair A, Merritt WM, Han LY, Armaiz-Pena GN, Kamat AA, Spannuth WA, Gershenson DM, Lutgendorf SK, Aggarwal BB, Sood AK (2007) Curcumin inhibits tumor growth and angiogenesis in ovarian carcinoma by targeting the nuclear factor-kappaB pathway. *Clin Cancer Res* 13: 3423–3430
- Nasrallah H, Bar-Sela G, Haim N (2012) Fatal interstitial lung disease associated with gemcitabine and erlotinib therapy for lung cancer. *Med Oncol* 29: 212–214
- Noel A, Jost M, Maquoi E (2008) Matrix metalloproteinases at cancer tumor-host interface. *Semin Cell Dev Biol* 19: 52–60
- Patel BB, Majumdar AP (2009) Synergistic role of curcumin with current therapeutics in colorectal cancer: minireview. *Nutr Cancer* 61: 842–846
- Paulovich AG, Toczyski DP, Hartwell LH (1997) When checkpoints fail. *Cell* 88: 315–321
- Pawlik TM, Keyomarsi K (2004) Role of cell cycle in mediating sensitivity to radiotherapy. *Int J Radiat Oncol Biol Phys* 59: 928–942
- Ravindran J, Prasad S, Aggarwal BB (2009) Curcumin and cancer cells: how many ways can curry kill tumor cells selectively? *AAPS J* 11: 495–510
- Rocks N, Estrella C, Paulissen G, Quesada Calvo F, Gilles C, Gueders M, Crahay C, Foidart JM, Gosset P, Noel A, Cataldo D (2008a) The metalloproteinase ADAM-12 regulates bronchial epithelial cell proliferation and apoptosis. *Cell Prolif* 41: 988–1001
- Rocks N, Paulissen G, Quesada-Calvo F, Munaut C, Gonzalez ML, Gueders M, Hacha J, Gilles C, Foidart JM, Noel A, Cataldo DD (2008b) ADAMTS-1 metalloproteinase promotes tumor development through the induction of a stromal reaction in vivo. *Cancer Res* 68: 9541–9550
- Saha A, Kuzuhara T, Echigo N, Fujii A, Suganuma M, Fujiki H (2010) Apoptosis of human lung cancer cells by curcumin mediated through up-regulation of 'growth arrest and DNA damage inducible genes 45 and 153'. *Biol Pharm Bull* 33: 1291–1299
- Shankar S, Ganapathy S, Chen Q, Srivastava RK (2008) Curcumin sensitizes TRAIL-resistant xenografts: molecular mechanisms of apoptosis, metastasis and angiogenesis. *Mol Cancer* 7: 16
- Sreekanth CN, Bava SV, Sreekumar E, Anto RJ (2011) Molecular evidences for the chemosensitizing efficacy of liposomal curcumin in paclitaxel chemotherapy in mouse models of cervical cancer. *Oncogene* 30: 3139–3152
- Srivastava RK, Chen Q, Siddiqui I, Sarva K, Shankar S (2007) Linkage of curcumin-induced cell cycle arrest and apoptosis by cyclin-dependent kinase inhibitor p21(WAF1/CIP1). *Cell Cycle* 6: 2953–2961
- Tharakan ST, Inamoto T, Sung B, Aggarwal BB, Kamat AM (2010) Curcumin potentiates the antitumor effects of gemcitabine in an orthotopic model of human bladder cancer through suppression of proliferative and angiogenic biomarkers. *Biochem Pharmacol* 79: 218–228
- Vermeulen K, Van Bockstaele DR, Berneman ZN (2003) The cell cycle: a review of regulation, deregulation and therapeutic targets in cancer. *Cell Prolif* 36: 131–149
- Wang D, Veena MS, Stevenson K, Tang C, Ho B, Suh JD, Duarte VM, Faull KF, Mehta K, Srivatsan ES, Wang MB (2008) Liposome-encapsulated curcumin suppresses growth of head and neck squamous cell carcinoma in vitro and in xenografts through the inhibition of nuclear factor kappaB by an AKT-independent pathway. *Clin Cancer Res* 14: 6228–6236
- Yadav VR, Prasad S, Kannappan R, Ravindran J, Chaturvedi MM, Vaahtera L, Parkkinen J, Aggarwal BB (2010) Cyclodextrin-complexed curcumin exhibits anti-inflammatory and antiproliferative activities superior to those of curcumin through higher cellular uptake. *Biochem Pharmacol* 80: 1021–1032
- Yodkeeree S, Chaiwangyen W, Garbisa S, Limtrakul P (2009) Curcumin, demethoxycurcumin and bisdemethoxycurcumin differentially inhibit cancer cell invasion through the down-regulation of MMPs and uPA. *J Nutr Biochem* 20: 87–95
- Zhongfa L, Chiu M, Wang J, Chen W, Yen W, Fan-Havard P, Yee LD, Chan KK (2012) Enhancement of curcumin oral absorption and pharmacokinetics of curcuminoids and curcumin metabolites in mice. *Cancer Chemother Pharmacol* 69: 679–689

This work is published under the standard license to publish agreement. After 12 months the work will become freely available and the license terms will switch to a Creative Commons Attribution-NonCommercial-Share Alike 3.0 Unported License.