

New products and focus on endodontics

Please send trade news information and illustrations to Arveen Bajaj at the BDJ, Nature Publishing Group, The Macmillan Building, 4-6 Crinan Street, London N1 9XW.

Trade news is provided as a service to readers using text and images from the manufacturer, supplier or distributor and does not imply endorsement by the BDJ. Normal and prudent research should be exercised before purchase or use of any product mentioned.

COMFORT AND FLEXIBILITY

Ivoclar Vivadent is offering dentists a free sample of OptraDam, a new type of rubber dam that is used without metal clamps and is comfortable to wear.

OptraDam incorporates a patented anatomical shape with high flexibility. Its three-dimensional flexibility makes it comfortable to wear even during long treatment sessions. OptraDam gently

and evenly retracts the lips and cheeks around the entire circumference of the mouth, giving an enlarged working area and increasing accessibility and visibility. Simultaneous total isolation of both arches is achieved.

OptraDam is easy to place and can remain *in situ* when radiographs are taken. It is available in regular and small sizes.

Reader response number 50



NEW WEBSITE TO OFFER CPD



A new website aim aimed at the whole dental team www.sharedental.co.uk will offer preferential rates to those who register early. The first page is already up and running and the full site launches in April.

The site will provide a platform for the dental team to discuss ideas and views, as well as keeping up to date with news and new materials and equipment. It will also offer online opportunities for CPD.

Reader response number 51

UPGRADE YOUR X-RAY UNIT

DB Dental Equipment are the distributors of the DenOptix QST imaging system.

DenOptix QST enables dentists to enjoy all the benefits of digital with the simplicity of film. It displays four bitewings in under 30 seconds and a full-mouth series in as little as four seconds per image. It also significantly decreases image plate loading time, eliminates the time and cost associated with traditional film processing and reduces patient and staff waiting.

It is easy to install and offers a simple conversion to digital. Its reusable plates provide instant images with film-like easy positioning. It scans all plate sizes and configurations, including panoramic and cephalometric, without the need for intensifying screens.

Reader response number 53



EASIER CANAL SEALING AND DISINFECTION

Apexit Plus and ApexCal, from Ivoclar Vivadent, are the logical development from the tried and tested Apexit.

Apexit Plus is a non-shrinking root



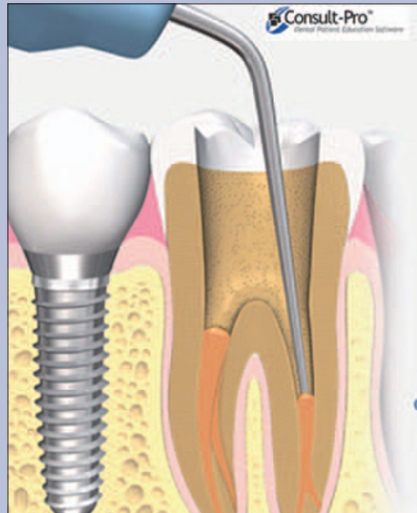
canal sealer with exceptional biocompatibility and minimal resorption. Dispensed with optimal consistency via a handy automix syringe and either a disposable fine intra-canal trip or lentulo spiral spreader, it remains usable for over three hours.

ApexitCal is the ready-to-use calcium hydroxide paste for temporary disinfectant dressing in root canal therapy. It is also recommended for both direct and indirect pulp capping. Non-setting, it is easy to remove.

Reader response number 52

HELP TO EXPLAIN ENDODONTICS

General Medical are delighted to announce that they have been appointed UK distributors for Consult-



Pro, the quick and easy way software package for promoting endodontics to your patients.

Consult-Pro consists of various suites: general dentistry, implants, periodontology, oral surgery, orthodontics and endodontics, which can be bought individually, or as a package. The endodontic suite features 3D animations and graphics to illustrate basic concepts as well as different surgical techniques and innovations. It also illustrates expected outcomes and the consequences of non-treatment.

The software package allows dentists to show patients exactly what is involved using clear graphics and descriptions. It can also be personalised by incorporating individual clinical case studies from the practice records.

Reader response number 54

INSTRUMENT RANGE EXTENDED



Minerva Dental has extended its product range with a variety of Codent endodontic instruments and accessories. These include Hedstrom files, root canal fillers, Gates Glidden drills, flexi files, colour coded paper points and colour coded Gutta Percha points.

Minerva Dental also stocks other Codent products including powder-free examination gloves, dust-free alginate, impression trays, hold adhesive, orange solvent, green ear loop and tie-on face masks, zinc polycarboxylate cement, silver-reinforced GI restorative cement, diamond and TC burs, mouthwash tablets, cotton pellets and hand instruments. The products are discounted when ordered via Mentor, Minerva's computer ordering system, or online.

Reader response number 57

ELIMINATE INFECTION RISK IN ROOT CANAL FILLING

Ivoclar Vivadent has introduced CoroSeal, an adhesive system specifically designed for sealing root canal entrances.

Bacterial contamination from the coronal end of a root canal restoration can compromise the long-term success of the entire treatment. CoroSeal is a

flowable composite specifically developed to eliminate this risk.

It provides endodontically treated teeth with long-lasting protection by creating an effective barrier against bacteria at the root canal entrance.

Supplied in an introductory kit, refills are available separately.

Reader response number 55

SIMPLIFY STORAGE FOR ROOT CANAL WORK

Highline bespoke storage solutions, from Support Chairs, incorporate a range of features to make root canal work easier and more efficient. They are composed of modules containing sets of four different drawer sizes. Some models feature an open space for storing equipment or a glass-fronted lockable cupboard with a height adjustable shelf. All are fitted with high quality wheels, offering ease of movement and hygiene. Two of the wheels are lockable.

Highline endodontic trolleys are constructed from aluminium, steel and high-quality plastics, which are resistant to most stains, including blood. Drawer fronts are available in simulated aluminium or navy metallic finish. Extra options include

drawer locks and instrument trays and draw dividers.

Reader response number 56



MECHANISED ENDODONTIC SUCCESS

SIRONiTi contra-angled endodontic handpieces are especially designed for root canal treatment using nickel-titanium files, and feature a 5-step torque limiter, which can be easily adjusted using a preselection ring on the handpiece. To enable dentists to identify easily which torque setting is appropriate for the relevant system, each handpiece is supplied with a set of torque cards.

The core of each SIRONiTi is a gold-plated magnetic coupling with a retro-rotation function. Should the selected torque limit be exceeded, the rotation of the file is automatically reversed by a quarter of a turn, until the obstruction is overcome and the file can start moving again.

Supplied with an E-fitting, SIRONiTi's ISO coupling is compatible with any electric micromotor. Once attached no additional equipment is required.

Reader response number 58

SAFE DISPENSERS FOR ENDODONTIC SOLUTIONS

Vista endodontic solutions are now available in a variety of safe dispensers.

Vista 17% EDTA solution facilitates the removal of the smear layer and dentine 'mud'. This enhances the disinfection and prepares the dentine walls for advanced adhesion of filling materials. It is supplied in 1.2 cc syringes and 120 ml or 480 ml bottles.

Vista sodium hypochlorite is supplied in pre-filled syringes containing 3% or 6% solution. This unique presentation is convenient and aseptic for irrigation, debridement and disinfection of root canals during and after instrumentation. There is also a 16 oz bottle of 3% and 6% solution.

Chlor-Xtra sodium hypochlorite is a 3% solution containing Triton-X surfactant which lowers viscosity and improves

penetration into microtubules and cracks.

Vista products are distributed by Quality Endodontic Distributors in the UK.

Reader response number 59



EASIER DIAGNOSIS

Belmont's intraoral X-ray units offer high image quality and maximum diagnostic information.

The DX-073 has an advanced technology microprocessor-controlled mAs



system. Its offset yoke and lines on the cone allow the operator to align it accurately every time for reproducible, quality images. Easy to clean and operate, it includes a smooth pictographic selection switch panel. Its light scissor arm offers flexibility, long reach, perfect positioning and stability.

The Belray 096 selects optimal exposure time based upon patient and film type, cone length and target. Its automatic voltage regulator and microprocessor controlled tube current circuit generate constant and stabilised radiation. In manual mode you personalise the film density, with 58 settings available.

Both are available from DB Dental Equipment.

Reader response number 60

NEW TRAYFORM IMPRESSION SYSTEM OFFERS CONVENIENCE AND ACCURATE RESULTS

Enlighten Research has launched a trayform impression system. The product is designed for ease of use and accuracy. Trayform metal perforated stainless steel impression trays are recommended for use with the system. The material is a super hydrophilic poly vinyl siloxane with optimised flow and compression characteristics. Setting time

is two minutes. This allows easy insertion with snap setting before the patient or operator move to distort the impressions.

The material gives high surface detail and is completely stable once set.

Enlighten Research also produces state of the art tooth whitening systems.

Reader response number 61