

Review

Active ingredients in Chinese medicines promoting blood circulation as Na⁺/K⁺-ATPase inhibitors

Ronald JY CHEN¹, Tzyy-rong JINN², Yi-ching CHEN¹, Tse-yu CHUNG¹, Wei-hung YANG^{1,2}, Jason TC TZEN^{1,2,3,*}

¹Graduate Institute of Biotechnology, National Chung Hsing University, Taichung 40227, Taiwan, China; ²School of Chinese Medicine, China Medical University, Taichung 40402, Taiwan, China; ³Agricultural Biotechnology Research Center, Academia Sinica, Taipei 11529, Taiwan, China

The positive inotropic effect of cardiac glycosides lies in their reversible inhibition on the membrane-bound Na⁺/K⁺-ATPase in human myocardium. Steroid-like compounds containing a core structure similar to cardiac glycosides are found in many Chinese medicines conventionally used for promoting blood circulation. Some of them are demonstrated to be Na⁺/K⁺-ATPase inhibitors and thus putatively responsible for their therapeutic effects via the same molecular mechanism as cardiac glycosides. On the other hand, magnesium lithospermate B of danshen is also proposed to exert its cardiac therapeutic effect by effectively inhibiting Na⁺/K⁺-ATPase. Theoretical modeling suggests that the number of hydrogen bonds and the strength of hydrophobic interaction between the effective ingredients of various medicines and residues around the binding pocket of Na⁺/K⁺-ATPase are crucial for the inhibitory potency of these active ingredients. Ginsenosides, the active ingredients in ginseng and sanqi, substantially inhibit Na⁺/K⁺-ATPase when sugar moieties are attached only to the C-3 position of their steroid-like structure, equivalent to the sugar position in cardiac glycosides. Their inhibitory potency is abolished, however, when sugar moieties are linked to C-6 or C-20 position of the steroid nucleus; presumably, these sugar attachments lead to steric hindrance for the entrance of ginsenosides into the binding pocket of Na⁺/K⁺-ATPase. Neuroprotective effects of cardiac glycosides, several steroid-like compounds, and magnesium lithospermate B against ischemic stroke have been accordingly observed in a cortical brain slice-based assay model, and cumulative data support that effective inhibitors of Na⁺/K⁺-ATPase in the brain could be potential drugs for the treatment of ischemic stroke.

Keywords: cardiac glycoside; ginsenoside; magnesium lithospermate B; neuroprotection; Na⁺/K⁺-ATPase inhibitors; blood circulation; steroid-like compound; traditional Chinese medicine

Acta Pharmacologica Sinica (2011) 32: 141–151; doi: 10.1038/aps.2010.197

Introduction

In an aging population cardiovascular diseases, such as congestive heart failure, have gradually become serious health challenges. Congestive heart failure, generally defined as incapability of the heart to supply sufficient blood flow to meet the body's needs, frequently leads to significantly adverse influences on physical and mental health, resulting in a markedly decreased quality of life and even death^[1]. While cardiac glycosides, such as digoxin, digitoxin and ouabain, have been a cornerstone of the treatment of congestive heart failure for more than two centuries, severe side effects have been reported for these steroid-like compounds^[2,3]. The narrow therapeutic index (the margin between effectiveness and toxicity) of cardiac glycosides further limits their clinical applications^[4]. The limited benefit with certain side effects of

the existing remedies has prompted investigators to search for complementary and alternative therapies and drugs.

Many traditional Chinese medicines have long been used in the treatment of various cardiovascular diseases, such as coronary heart disease, heart stroke and myocardial infarction, and some of them are effective in promoting blood circulation, removing blood stasis and supplementing vital energy^[5,6]. Although these medicines display considerable therapeutic effects with low toxicity, little is known about their primary active ingredients and detailed pharmaceutical mechanisms. Nevertheless, these traditional Chinese medicines, dating back 2000 years, have been regarded as valuable sources to screen potential drugs for the treatment of cardiovascular diseases.

With the rapid development of technology, numerous constituents in traditional Chinese medicines have been isolated and structurally determined^[7]. Abundant steroid-like compounds, structurally similar to cardiac glycoside, have been found in many Chinese medicines used for promoting blood circulation^[8,9]. It is likely that these steroid-like compounds

* To whom correspondence should be addressed.

E-mail TCTZEN@dragon.nchu.edu.tw

Received 2010-09-03 Accepted 2010-10-28

are responsible for the therapeutic effects of these medicines via the same molecular mechanism triggered by effective inhibition of Na^+/K^+ -ATPase. On the other hand, no appreciable contents of steroid-like compounds are found in danshen (*Salvia miltiorrhiza*), a well-known Chinese herb traditionally regarded as an effective medicine for promoting blood circulation^[10]. Instead, magnesium lithospermate B (MLB), the major soluble ingredient in danshen, is assumed to be responsible for the therapeutic effect by inhibiting Na^+/K^+ -ATPase in a manner comparable to that of cardiac glycosides.

This review summarizes recent research on Na^+/K^+ -ATPase inhibitory potency of some active ingredients identified in the Chinese medicines used for promoting blood circulation. Molecular modeling and docking of these compounds to Na^+/K^+ -ATPase resolve at molecular level the difference in their inhibitory potency. Potential usage of these active ingredients as inhibitors of Na^+/K^+ -ATPase in the brain for the treatment of ischemic stroke is also discussed.

Structure and function of Na^+/K^+ -ATPase

Na^+/K^+ -ATPase, a P-type ATPase also known as sodium pump, is an active transport system of sodium and potassium ions that is highly conserved in all animal cells. It commonly consumes 20%–30% of the adenosine triphosphate (ATP) energy generated in animal cells at rest to actively transport three Na^+ out of and two K^+ into cells^[11]. The X-ray crystal structure of Na^+/K^+ -ATPase recently resolved^[12–14] shows that it is composed of three subunits (α , β and γ subunits) with distinct properties^[15–17]; and the α catalytic subunit, a 112 kDa protein, contains sites important for ATP binding and phosphorylation as well as ion occlusion (Figure 1A) and an ouabain-binding site (Figure 1B), the primary binding site for many pharmacological agents, such as cardiac glycosides, that affect pump activity^[18].

Physiological functions of Na^+/K^+ -ATPase have been deduced from its role as an ion pump. Specifically, the ability of Na^+/K^+ -ATPase to establish and maintain ion gradients makes it essential for the generation and maintenance of electrical membrane potentials, which are necessary for neuronal excitability, transmission^[19] and cardiac muscle contraction^[20]. Na^+/K^+ -ATPase also generates the Na^+ gradient that is critical for the reabsorption of sodium ion and water from the glomerular filtrate in the nephron^[21] and absorption of fluid from the lungs and intestine^[22]. It can also drive secondary active co-/countertransporters, which are coupled to the gradient of extracellular to intracellular Na^+ concentration, such as the sodium glucose cotransporter and the $\text{Na}^+/\text{Ca}^{2+}$ exchanger^[23]. In addition, recent findings have suggested additional signaling modes of action of Na^+/K^+ -ATPase^[24–26], implicating its regulation of several important cellular processes and highlighting potential therapeutic roles of its inhibitors (such as cardiac glycosides) in various diseases.

Inhibition of Na^+/K^+ -ATPase by cardiac glycosides leading to a positive inotropic effect

Cardiac glycosides, such as ouabain and digoxin, are a diverse

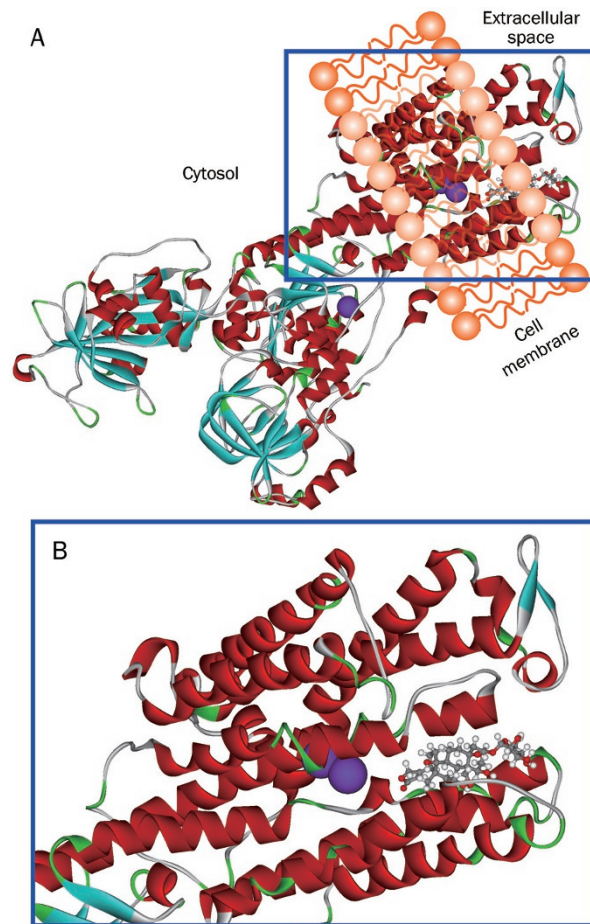


Figure 1. (A) Crystal structure of ouabain binding to the extracellular pocket of shark rectal gland Na^+/K^+ -ATPase (PDB code 3A3Y) α subunit^[17]. Amino acid residues of Na^+/K^+ -ATPase α subunit are shown in ribbon structure, and ouabain in scaled ball and stick. K^+ binding sites are shown in purple balls. (B) Enlarged diagram without the membrane bilayer shown in the blue box of (A).

family of naturally derived compounds that bind to and inhibit Na^+/K^+ -ATPase. While they show considerable structural diversity, all members of this family share a common steroidal framework, regarded as the pharmacophoric moiety responsible for the activity of these compounds^[27]. Generally, this steroid core is double-substituted with an unsaturated lactone ring at position 17 and a sugar portion at position 3; and this lactone moiety of cardiac glycosides is critical for their potent inhibition of Na^+/K^+ -ATPase. Although the sugar moiety does not greatly influence their biological activity, the addition of sugars to the steroid core affects the pharmacodynamic and pharmacokinetic profile of each glycoside^[28].

Cardiac glycosides have been in clinical use for many years for the treatment of congestive heart failure and cardiac arrhythmia, and the mechanism of their positive inotropic effect is well characterized. According to the most widely accepted molecular mechanism responsible for the therapeutic effect of cardiac glycosides, they act through reversible inhibition of Na^+/K^+ -ATPase in the membrane of heart muscle

cells^[29, 30]. In human heart, inhibition of the Na⁺/K⁺-ATPase leads to the accumulation of intracellular sodium ion, which decreases the sodium gradient across the membranes of cardiac muscle cells. This reduced sodium gradient in turn limits the activity of the Na⁺/Ca²⁺ exchanger in the cell membrane, which normally uses the sodium gradient for energy in the extrusion of calcium ion^[31]. Each cardiac action potential is thus followed by elevated levels of residual intracellular calcium ion, and the net effect of which is to strengthen successive heart contractions^[32]. In this way, inhibition of the Na⁺/K⁺-ATPase by cardiac glycosides produces beneficial effects in patients with congestive heart failure. However, severe side effects and narrow therapeutic index of cardiac glycosides have apparently limited their clinical applications^[29].

Steroid-like compounds in Chinese medicines for promoting blood circulation and their inhibitory potency on Na⁺/K⁺-ATPase

Many Chinese medicinal products traditionally used in the treatment of cardiovascular diseases seem to achieve their therapeutic effects via promotion of blood circulation. A number of steroid-like compounds, such as triterpenoids, steroids and saponins, have been found in Chinese medicinal products used for promoting blood circulation (Table 1), and regarded as the active ingredients responsible for their therapeutic effects^[33-64]. In light of the structural similarity between the core structure of these steroid-like compounds and the steroidal framework of cardiac glycosides, we propose that some of these medicines may possess therapeutic effects via inhibition of Na⁺/K⁺-ATPase by their steroid-like

compounds^[65]. Some of the steroid-like compounds listed in Table 1 are commercially available and thus subjected to Na⁺/K⁺-ATPase inhibition assay (Figure 2). The results show that all examined steroid-like compounds found in Chinese medicines for promoting blood circulation displayed more or less inhibitory potency on Na⁺/K⁺-ATPase. Among these steroid-like compounds, bufalin (structurally almost equivalent to ouabain) exhibits significantly higher inhibitory potency (IC₅₀ value around 1 μmol/L) than the others while ginsenoside Rh₂, ursolic acid and oleanolic acid are relatively moderate inhibitors of Na⁺/K⁺-ATPase with IC₅₀ values around 50-100 μmol/L. Based on the experimental observation of inhibitory potency of steroid-like compounds on Na⁺/K⁺-ATPase, the therapeutic effects of many cardiac Chinese medicines may be partly attributed to various steroid-like compounds that promote blood circulation via the same molecular mechanism triggered by cardiac glycosides, that is, accentuating the force of myocardial contraction by elevating calcium concentration via the inhibition of Na⁺/K⁺-ATPase.

Inhibition of Na⁺/K⁺-ATPase by MLB, a non-steroid compound, leading to the therapeutic effect of danshen

Danshen, the dried roots of medicinal plant *Salvia miltiorrhiza*, is one of the most popular Chinese medicines widely used in many medicinal preparations and formulae taken by people in several Asian countries. Traditionally it is regarded as an effective herb for promoting blood circulation, removing blood stasis, relieving pain, stimulating menstrual discharge, and relaxing the mind. Therefore, danshen has also been extensively used in the treatment of coronary heart disease, myocardial infarction, heart failure, menstrual disorders, and

Table 1. Steroid-like compounds in Chinese medicines used for the promotion of blood circulation.

Compound	Chinese medicinal sources	References
Bufalin	The dried venom of <i>Bufo bufo gargarizans</i> Cantor or <i>B. bufo melanostictus</i> Schneider	33, 34
Ginsenoside Rh ₂	The dry root of <i>Panax ginseng</i> or <i>P. notoginseng</i> F H Chen	35-37
Ursolic acid	Whole plant of <i>Prunella vulgaris</i> L with dry flowers	38, 39
Oleanolic acid	Whole plant of <i>Prunella vulgaris</i> L with dry flowers	38, 39
Saikosaponin A	The dry root of <i>Bupleurum chinense</i> DC or <i>B. scorzonifolium</i> Willd	40, 41
Cholic acid	The dried bile of <i>Ursus arctos</i> Linnaeus or <i>Selenarctos thibetanus</i> G Cuvier	42, 43
Sarsasapogenin	The dry root of <i>Anemarrhena asphodeloides</i> Bge	44
Polygalacic acid	The dry root of <i>Platycodon grandiflorum</i> (Jacq) A DC	45
Jujuboside B	The mature seeds of <i>Ziziphus jujube</i> Mill var <i>spinosa</i> (Bunge) Hu ex H F Chou	46
Glycyrrhizin	The root of <i>Glycyrrhiza uralensis</i> Fisch - <i>G. inflata</i> Bat or <i>G. glabra</i> L	47, 48
Astragaloside III	The dry root of <i>Astragalus membranaceus</i> (Fisch) Bge or var <i>mongholicus</i> (Bge) Hsiao	49
Betulinic acid	The dried root cortex of <i>Paeonia suffruticosa</i>	50
Inokosterone	The dry root of <i>Achyranthes bidentata</i> Blume	51
Dehydrocorydaline	The tuber of <i>Corydalis yanhusuo</i> W T Wang	52, 53
Rhynchophylline	The hook of <i>Uncaria rhynchophylla</i> (Miquel) Jacks	54, 55
Hirsutine	The hook of <i>Uncaria rhynchophylla</i> (Miquel) Jacks	56-58
Cucurbitacin D	The fruit of <i>Trichosanthes kirilowii</i> Maxim or <i>T. rosthornii</i> Harms	59, 60
β-Boswellic acid	The oleogum resin of <i>Boswellia carterii</i> Birdwood	61
Isolimonic acid	The fruit of <i>Citrus aurantium</i> L	62
β-Sitosterol	The rhizome of <i>Sparganium stoloniferum</i> Buch-Ham	63
Pachymic acid	The sclerotium of <i>Poria cocos</i> (Schw) Wolf	64

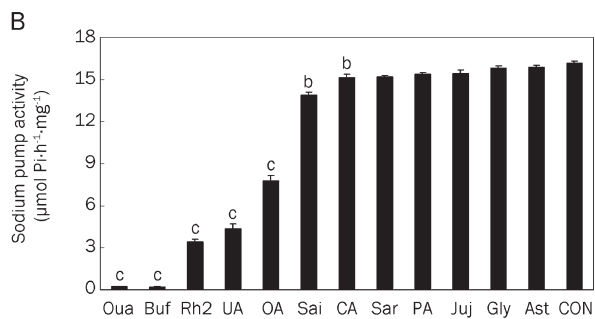
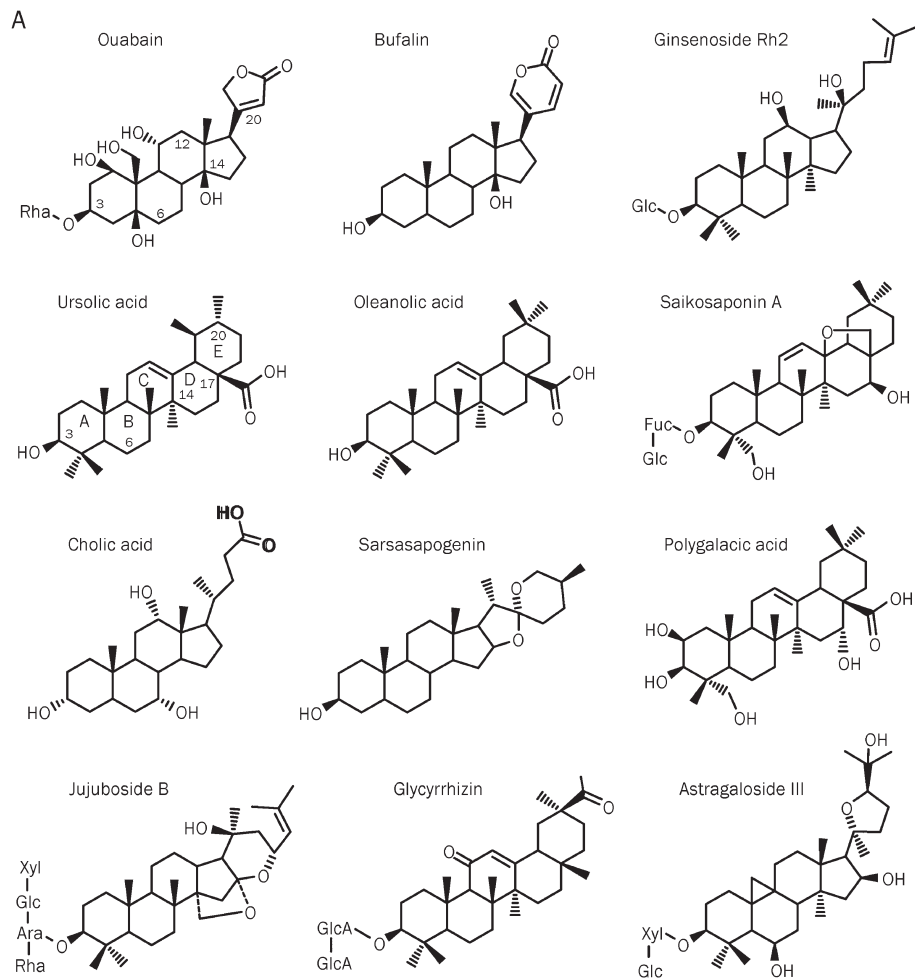


Figure 2. (A) Chemical structures of ouabain and 11 steroid-like compounds found in Chinese medicinal products used for the promotion of blood circulation. (B) Inhibition of porcine Na⁺/K⁺-ATPase by 0.1 mmol/L of ouabain and the selected 11 steroid-like compounds. Data represent mean±SEM of 5 replicates. ^b*P*<0.05, ^c*P*<0.01 vs control group (CON: deionized water only). (Adopted and modified from Figures 1 and 2 of Chen *et al*, *Acta Pharmacol Sin* 2010; 31: 696–702).

other cerebrovascular diseases^[66]. Ingredients in danshen are mainly divided into water-soluble and lipid-soluble compounds. Although some lipid-soluble constituents in this herb, such as tanshinones, have been conventionally considered the active ingredients^[67, 68], the major water-soluble component MLB, a derivative of caffeic acid tetramer, recently has also been demonstrated to possess several medicinal effects, such as vasodilating, antihypertensive, antioxidative, and free radical scavenging activities^[69–73]. MLB possesses a relatively rigid structure due to the formation of salt bridges between Mg²⁺ and the four oxygen atoms of carboxyl groups from the four caffeic acid fragments.

In spite of being a non-steroid compound, MLB possesses potent inhibition on Na⁺/K⁺-ATPase *in vitro*^[74]. The molecular organization and configuration of MLB in the 3D structure is somewhat similar to ouabain, a cardiac glycoside with a rigid steroid backbone (Figure 3A), although they are totally different compounds with distinct molecular weights (584.65 for ouabain and 740.67 for MLB). Based on experimental observation and theoretical modeling, we propose that MLB acts as the active component responsible for the cardiac therapeutic effect of danshen by the same molecular mechanism triggered by cardiac glycosides, *ie*, inhibition of Na⁺/K⁺-ATPase (Figure 3B). In agreement with this proposal, the intracellular Ca²⁺

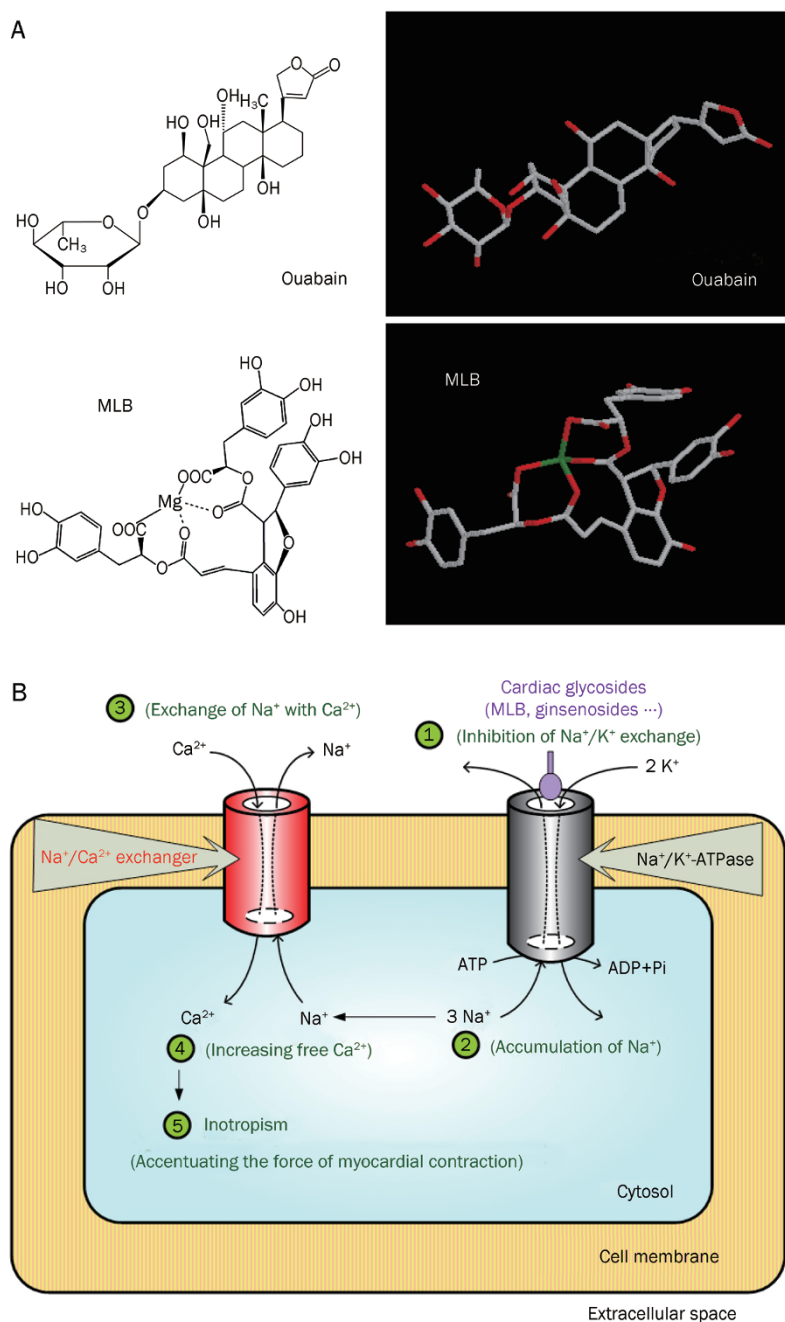


Figure 3. (A) Chemical structures of ouabain and MLB. The 3D structures of ouabain and MLB (in dark background) were displayed using RasWin Molecular Graphics Windows Version 2.6. Gray, red, and green colors represent C, O, and Mg^{2+} atoms, respectively. (B) Proposed molecular mechanism responsible for the therapeutic effects of cardiac glycosides, ginsenosides, MLB, and other steroid-like compounds in cardiac cells. Step 1: Inhibiting the cellular exchange of Na^+ and K^+ by drugs binding to Na^+/K^+ -ATPase. Step 2: Accumulation of Na^+ in the intracellular space due to the inhibition of Na^+/K^+ -ATPase activity. Step 3: Promotion of the cellular exchange of Na^+ and Ca^{2+} via the $\text{Na}^+/\text{Ca}^{2+}$ exchanger system. Step 4: Increasing the intracellular Ca^{2+} concentration owing to the activation of the $\text{Na}^+/\text{Ca}^{2+}$ exchanger system. Step 5: The elevated intracellular Ca^{2+} concentration leads to an increased inotropism and accentuates the force of myocardial contraction. (Adopted from Figure 1 and the cover page of Tzen et al, *Acta Pharmacol Sin* 2007; 28: 609–15).

levels of SH-SY5Y neuroblastoma cells treated with MLB are substantially elevated in a manner similar to that observed in cells treated with ouabain^[75]. The elevated Ca^{2+} levels seem to be supplied by both extracellular influx through the $\text{Na}^+/\text{Ca}^{2+}$ exchanger and intracellular release from endoplasmic reticulum.

Cell toxicity caused by cardiac glycosides at high concentrations has been noticed and blamed to their putative triggering of several signaling cascade responses that lead to cell death^[76]. In contrast, MLB is generally regarded as an antioxidant without notable toxicity^[74]. Similar results were found in our studies: severe cell toxicity accompanied with dendritic shrink was observed in SH-SY5Y cells treated with ouabain, but not

in those treated with MLB^[75]. Therefore, we surmise that MLB has a great potential, with extensive clinical trials, to become a safer drug than cardiac glycosides.

Molecular modeling: the binding mode of potential inhibitors to Na^+/K^+ -ATPase

Molecular modeling and docking of steroid-like compounds and MLB to the α subunit of Na^+/K^+ -ATPase revealed the observed difference in their Na^+/K^+ -ATPase inhibition at molecular level. The drastic difference observed in the inhibitory potency of these active ingredients is ascribed mainly to the number of hydrogen bonds (H-bonds) and partially to the strength of hydrophobic interaction between the com-

pounds and residues around the deep cavity close to the two K^+ binding sites of Na^+/K^+ -ATPase (Figure 4). As expected from structural similarity, the interaction of bufalin with the binding pocket of Na^+/K^+ -ATPase nearly matched to that of ouabain reported previously^[16] with the unique lactone ring penetrating deeply into the cavity close to two K^+ binding sites. For ouabain, three H-bonds are formed between the lactone ring and Ile328 and Ala330 of Na^+/K^+ -ATPase, and two H-bonds between the hydroxyl group at C-14 and Thr804 of Na^+/K^+ -ATPase. In contrast, one H-bond is formed between the lactone ring of bufalin and Ala330 of Na^+/K^+ -ATPase, and two H-bonds between the hydroxyl group at C-14 of bufalin and Thr804 of Na^+/K^+ -ATPase. Two H-bonds are formed between the hydroxyl groups at C-12 and C-20 of ginsenoside Rh2 and Asn129 and Thr804 of Na^+/K^+ -ATPase, respectively. Strong hydrophobic interaction is found between the lactone ring of ouabain or bufalin and six hydrophobic residues (Ile327, Ile328, Val329, Ile787, Phe790, and Ile807) around the deep cavity of Na^+/K^+ -ATPase. A hydrophobic interaction between the alkyl group of ginsenoside Rh2 and the same six hydrophobic residues of Na^+/K^+ -ATPase is also found. Only one H-bond is formed between the carboxyl group of ursolic acid and Ile322 of Na^+/K^+ -ATPase, and a moderate hydrophobic interaction is found between the ring E of ursolic acid and four hydrophobic residues (Ile327, Val329, Phe790, and Ile807) of Na^+/K^+ -ATPase. On the whole, no H-bond is formed between those steroid-like compounds with weak inhibitory potency and the binding pocket of Na^+/K^+ -ATPase^[65]. However, hydrophobic interaction of similar strength is observed between the hydrophobic steroidal core of all 12 steroid-like compounds examined and 8 other hydrophobic residues (Leu132, Tyr315, Ile322, Phe323, Ile325, Phe793, Ile794, and Leu802 located in the upper portions of the figures) around the binding pocket of Na^+/K^+ -ATPase.

Three H-bonds are formed between the hydroxyl group at C-4 position of MLB and Lys912 (forming two H-bonds) and Glu915 (forming one H-bond) of Na^+/K^+ -ATPase, one H-bond between the carbonyl group at C-9 position of MLB and Thr804 of Na^+/K^+ -ATPase, and one H-bond between the hydroxyl group at C-4 position of MLB and Leu110 of Na^+/K^+ -ATPase. Similar to the hydrophobic steroidal core of ouabain, the four aromatic rings of MLB form strong hydrophobic interaction with hydrophobic residues (Leu132, Tyr315, Ile322, Phe323, Ile325, Phe793, Ile794, and Leu802) around the binding pocket of Na^+/K^+ -ATPase.

Effects of different sugar attachments to ginsenosides on Na^+/K^+ -ATPase inhibitory potency

Ginsenosides are triterpenoidal saponins that have a common four ring hydrophobic steroid-like structure with various sugar moieties attached mostly at the C-3, C-6, or C-20 position (Figure 5). To date, more than 80 ginsenosides have been isolated from over ten *Panax taxa*, and most of them are derived from four types of aglycones: protopanaxadiol, protopanaxatriol, oleanolic acid, and ocotillol^[77]. Several biological activities, such as neuroprotective effects, antitumour activity, and

cardiac therapeutic effects, have been documented for many ginsenosides^[78, 79]. Ginsenosides have also been regarded as the active ingredients in many Chinese herbs, for instance, ginseng and sanqi (the roots of *Panax ginseng* and *Panax notoginseng*), two well-known traditional Chinese herbs commonly used for the treatment of coronary heart disease and cerebral vascular disease^[80-82].

Based on experimental observation and theoretical modeling, the therapeutic effects of ginseng and sanqi in promoting blood circulation should be at least partly attributed to the effective inhibition of Na^+/K^+ -ATPase by ginsenosides^[83], such as ginsenoside Rh2. However, different sugar moieties in ginsenosides affect their inhibitory potency on Na^+/K^+ -ATPase. In our study, ginsenosides with sugar moieties attached only to the C-3 position of the steroid-like structure, equivalent to the sugar position in cardiac glycosides, possess inhibitory potency on Na^+/K^+ -ATPase. However, their inhibitory potency is significantly reduced or completely abolished when a monosaccharide was linked to the C-6 or C-20 position of the steroid-like structure; the inhibitory potency is lost completely when the monosaccharide is replaced by a disaccharide molecule at either positions. Molecular modeling and docking show that sugar attachment to the C-6 or C-20 position of the steroid-like structure apparently causes steric hindrance to the entrance of ginsenosides into the extracellular binding pocket of the Na^+/K^+ -ATPase α subunit, and thus greatly reduces or completely abolishes their inhibitory potency.

Paradoxically, most ginsenosides found in ginseng and sanqi do not seem to be competent inhibitors of Na^+/K^+ -ATPase due to their sugar attachment to the C-6 or C-20 position of the steroid-like structure. Nevertheless, ginsenosides might act as prodrugs, as they tend to be metabolized to their active forms by intestinal bacterial deglycosylation after oral administration^[84]. Generally, the metabolites, easily absorbed by the intestines due to an increase of hydrophobicity after deglycosylation, might display the same or different pharmacological actions in comparison with their parent compounds^[85]. Therefore, the cardiac therapeutic effects of ginseng and sanqi could very possibly be attributed to the effective inhibition of Na^+/K^+ -ATPase by the metabolized ginsenosides, with sugar moieties attached only to the C-3 position of the steroid-like structure.

Combinational usage of danshen and sanqi for the treatment of cardiovascular diseases

In contrast with Western medicines, combinational usage of traditional Chinese medicines with similar or different therapeutic effects is a common practice. Currently, several commercial products for cardiovascular diseases comprise mainly danshen and sanqi in variable ratios, mostly with danshen as the major and sanqi the minor constituents^[86]. The active ingredients in danshen and sanqi for cardiac therapeutic effects are MLB and ginsenosides, respectively. MLB, a polyphenolic compound, is metabolized within a few hours after consumption^[87]. In contrast, it takes a couple of days to metabolize the steroid-like ginsenosides in human body^[88, 89].

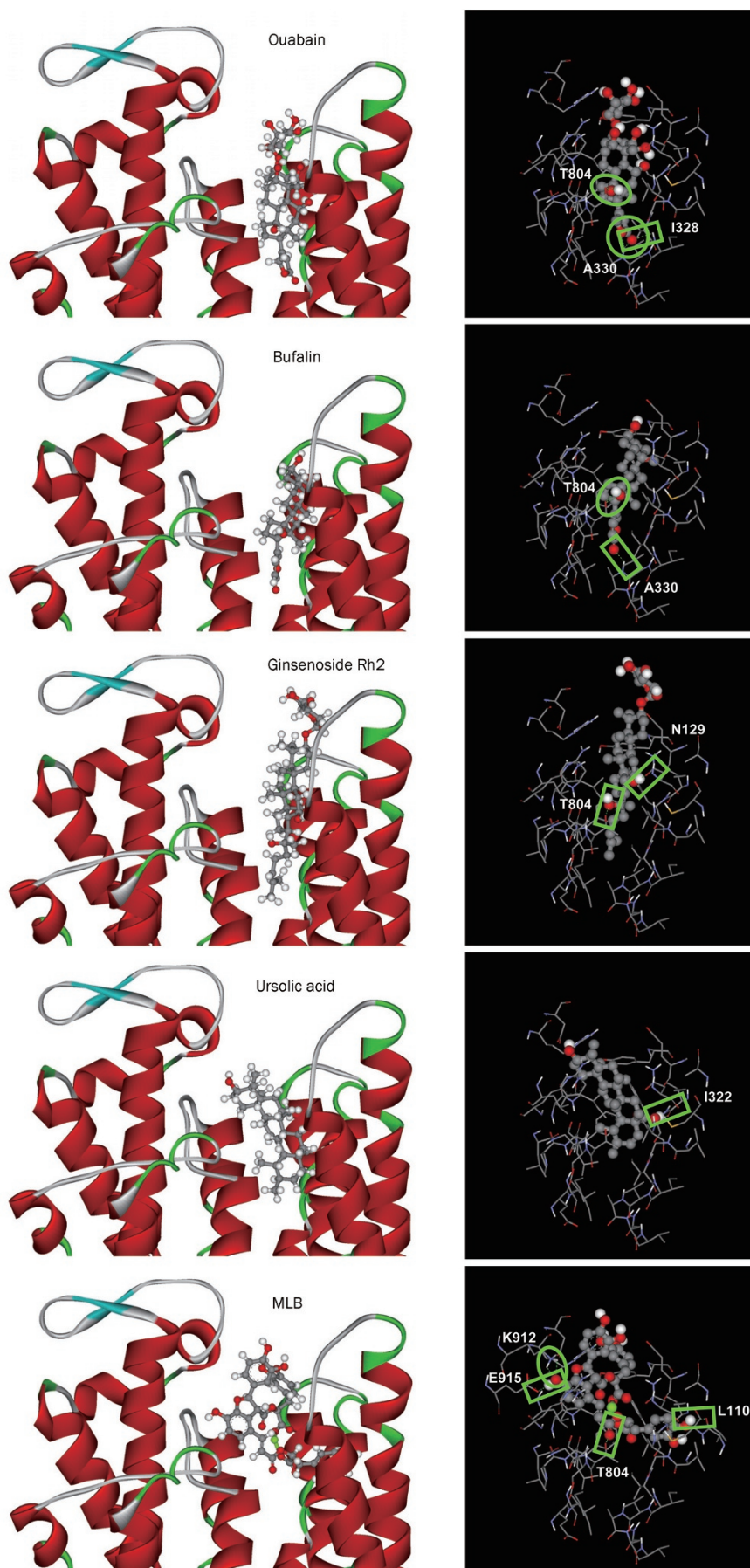


Figure 4. Detailed molecular interactions between the extracellular binding pocket of Na⁺/K⁺-ATPase and ouabain, bufalin, ginsenoside Rh2, ursolic acid, or MLB. (Left panels) Modeling is displayed for ligand compounds, ouabain, bufalin, ginsenoside Rh2, ursolic acid, and MLB binding to the extracellular pocket of Na⁺/K⁺-ATPase α subunit. Amino acid residues around the binding pocket of Na⁺/K⁺-ATPase are shown in ribbon structure, and ligand compounds in stick structure. (Right panels) Amino acid residues of Na⁺/K⁺-ATPase close to ligand compounds (ball-and-stick structure) are shown in line structure. Green box or oval represents one or two hydrogen bonds formed between Na⁺/K⁺-ATPase and ligand compounds. (Adopted and modified from Figure 6 of Chen et al, *Acta Pharmacol Sin* 2010; 31: 696–702 and Figure 5 of Chen et al, *Acta Pharmacol Sin* 2010; 31: 923–9).

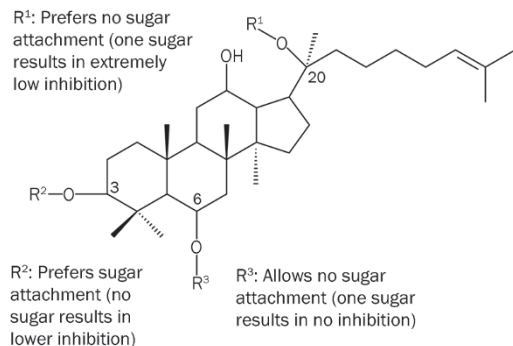


Figure 5. A summarized diagram for the effects of sugar attachments in three different positions of the steroid nucleus of ginsenosides. Detailed 3D diagrams are shown in Figures 4, 5, and 6 of Chen et al, *Acta Pharmacol Sin* 2009; 30: 61–9.

In light of our recent studies, we rationalize that the combinational usage of danshen and sanqi for the treatment of cardiovascular diseases takes the advantages of the non-toxic and yet strong Na⁺/K⁺-ATPase inhibitory potency of MLB to relieve the symptoms promptly and the moderate Na⁺/K⁺-ATPase inhibitory potency of ginsenosides to provide a relatively long-term basal therapeutic effect.

Inhibition of Na⁺/K⁺-ATPase and its potential neuroprotection

In brain cells, approximately half of all energy is spent for the active exchange of cytosolic sodium for extracellular potassium, a process carried out by Na⁺/K⁺-ATPase for the maintenance of transmembrane ionic gradients for all mammalian cells^[90–92]. As the brain's primary consumer of ATP, Na⁺/K⁺-ATPase is particularly vulnerable to ATP depletion commonly observed in ischemic stroke. This vulnerability suggests that pharmacological inhibition of the Na⁺/K⁺-ATPase in brain cells should further compromise ATP-depleted neurons. Indeed, there is accumulating evidence that inhibiting the brain Na⁺/K⁺-ATPase can actually provide neuroprotection in the context of ischemia^[93].

Cardiac glycosides, being potent inhibitors of Na⁺/K⁺-ATPase, have been demonstrated to provide neuroprotection against ischemic stroke in a cortical brain slice-based compound screening platform^[94]. Moreover, it has been hypothesized that blockade of Na⁺/K⁺-ATPase may provide neuroprotective effect in ischemia-reperfusion through ATP conservation and modulating intracellular calcium levels just as the cardiac glycosides do in the heart contraction cycle^[93]. Similar neuroprotective effects have also been documented for ginsenosides against ischemic stroke, and some of the results were observed using the same brain slice assay model^[95–99]. Oleanolic acid, a steroid-like compound and moderate inhibitor of Na⁺/K⁺-ATPase, also displayed neuroprotective effect against focal cerebral ischemic injury^[100]. Furthermore, the same phenomenon was observed when we examined the neuroprotective effect of MLB against ischemic stroke in a similar brain slice assay model^[74]. Taken together, these experimental

data support that inhibiting Na⁺/K⁺-ATPase may provide neuroprotection in the context of ischemia as well as other neurodegenerative conditions. It is more than likely that effective inhibitors of Na⁺/K⁺-ATPase in the brain are potential drugs for the treatment of ischemic stroke.

Conclusions and perspectives

With a history of at least 2000 years, traditional Chinese medicines have long been regarded as precious resources for screening new drugs. Our recent studies have shown that steroid-like compounds in many Chinese medicines used for promoting blood circulation display more or less inhibitory potency on Na⁺/K⁺-ATPase, and may thus provide the therapeutic effects of corresponding medicines via the same molecular mechanism triggered by cardiac glycosides. Except bufalin in ChanSu, steroid-like compounds in traditional Chinese medicines used for promoting blood circulation are expected to exert less severe side effects than cardiac glycosides. Nevertheless, side effects have to be expected of a continuous consumption of these steroid-like compounds for a long period of time. In contrast, MLB, the non-steroid active ingredient responsible for the cardiac therapeutic effect of danshen by effective inhibition of Na⁺/K⁺-ATPase, is generally regarded as a non-toxic antioxidant without apparent adverse effects. Therefore, we believe that MLB is of great potential to replace cardiac glycosides for the treatment of congestive heart failure, provided it undergoes necessary clinical trials. Moreover, searching from traditional Chinese medicines for additional antioxidant polyphenolic compounds possessing inhibitory potency on Na⁺/K⁺-ATPase may lead to the discovery of novel drugs for the treatment of cardiovascular diseases without side effects.

Acknowledgements

Project supported by a grant to Jason TC TZEN from the National Science Council, Taiwan, China (N₀ 96-2752-B-005-008-PAE).

We thank Prof Chih-ning SUN (Department of Entomology, National Chung Hsing University, China) for critical reading of the manuscript.

References

- Boxer R, Yang SX, Hager WD. Congestive heart failure and the elderly. *Conn Med* 2003; 67: 497–503.
- Haustein KO. Cardiotoxicity of digitalis. *Arch Toxicol Suppl* 1986; 9: 197–204.
- Koren G, Woodland C, Ito S. Toxic digoxin-drug interactions: the major role of renal P-glycoprotein. *Vet Hum Toxicol* 1998; 40: 45–6.
- Vivo RP, Krim SR, Perez J, Inklab M, Tenner T Jr, Hodgson J. Digoxin: current use and approach to toxicity. *Am J Med Sci* 2008; 336: 423–8.
- Gong X, Sucher NJ. Stroke therapy in traditional Chinese medicine (TCM): prospects for drug discovery and development. *Phytomedicine* 2002; 9: 478–84.
- Liang H, Chen S, Shen S. Clinical observation on influence of Chinese medicines for promoting blood circulation to remove blood stasis on FIB and DD in plasma of patients with cerebral thrombosis.

- J Tradit Chin Med 2002; 22: 256–9.
- 7 Yang M, Sun J, Lu Z, Chen G, Guan S, Liu X, et al. Phytochemical analysis of traditional Chinese medicine using liquid chromatography coupled with mass spectrometry. *J Chromatogr A* 2009; 1216: 2045–62.
- 8 Liu XX, Wang L, Chen XQ, Deng XT, Cao Y, Wang Q. Simultaneous quantification of both triterpenoid and steroidal saponins in various Yunnan Baiyao preparations using HPLC-UV and HPLC-MS. *J Sep Sci* 2008; 31: 3834–46.
- 9 Zhang Q, Ye M. Chemical analysis of the Chinese herbal medicine Gan-Cao (licorice). *J Chromatogr A* 2009; 1216: 1954–69.
- 10 Wang X, Morris-Natschke SL, Lee KH. New developments in the chemistry and biology of the bioactive constituents of Tanshen. *Med Res Rev* 2007; 27: 133–48.
- 11 Skou JC, Esmann M. The Na, K-ATPase. *J Bioenerg Biomembr* 1992; 24: 249–61.
- 12 Shinoda T, Ogawa H, Cornelius F, Toyoshima C. Crystal structure of the sodium-potassium pump at 2.4 Å resolution. *Nature* 2009; 459: 446–50.
- 13 Morth JP, Pedersen BP, Toustrup-Jensen MS, Sorensen TL, Petersen J, Andersen JP, et al. Crystal structure of the sodium-potassium pump. *Nature* 2007; 450: 1043–9.
- 14 Ogawa H, Shinoda T, Cornelius F, Toyoshima C. Crystal structure of the sodium-potassium pump (Na⁺, K⁺-ATPase) with bound potassium and ouabain. *Proc Natl Acad Sci USA* 2009; 106: 13742–7.
- 15 O'Brien WJ, Lingrel JB, Wallick ET. Ouabain binding kinetics of the rat alpha two and alpha three isoforms of the sodium-potassium adenosine triphosphate. *Arch Biochem Biophys* 1994; 310: 32–9.
- 16 Morris JF, Ismail-Beigi F, Butler VP, Gati I, Lichtstein D. Ouabain-sensitive Na⁺, K⁺-ATPase activity in toad brain. *Comp Biochem Physiol A Physiol* 1997; 118: 599–606.
- 17 Lebovitz RM, Takeyasu K, Fambrough DM. Molecular characterization and expression of the (Na⁺, K⁺)-ATPase alpha-subunit in *Drosophila melanogaster*. *EMBO J* 1989; 8: 193–202.
- 18 Rose AM, Valdes R Jr. Understanding the sodium pump and its relevance to disease. *Clin Chem* 1994; 40: 1674–85.
- 19 Gillis RA, Quest JA. The role of the nervous system in the cardiovascular effects of digitalis. *Pharmacol Rev* 1979; 31: 19–97.
- 20 Blanco G, Mercer RW. Isozymes of the Na-K-ATPase: heterogeneity in structure, diversity in function. *Am J Physiol* 1998; 275: F633–50.
- 21 Lingrel JB. Na, K-ATPase: isoform structure, function, and expression. *J Bioenerg Biomembr* 1992; 24: 263–70.
- 22 Lingrel JB. The physiological significance of the cardiotonic steroid/ouabain-binding site of the Na, K-ATPase. *Annu Rev Physiol* 2010; 72: 395–412.
- 23 Blaustein MP. Physiological effects of endogenous ouabain: control of intracellular Ca²⁺ stores and cell responsiveness. *Am J Physiol* 1993; 264: C1367–87.
- 24 Xie Z, Xie J. The Na/K-ATPase-mediated signal transduction as a target for new drug development. *Front Biosci* 2005; 10: 3100–9.
- 25 Xie Z, Cai T. Na⁺/K⁺-ATPase-mediated signal transduction: from protein interaction to cellular function. *Mol Interv* 2003; 3: 157–68.
- 26 Zhang L, Zhang Z, Guo H, Wang Y. Na⁺/K⁺-ATPase-mediated signal transduction and Na⁺/K⁺-ATPase regulation. *Fundam Clin Pharmacol* 2008; 22: 615–21.
- 27 Schonfeld W, Weiland J, Lindig C, Masnyk M, Kabat MM, Kurek A, et al. The lead structure in cardiac glycosides is 5 beta, 14 beta-androstane-3 beta 14-diol. *Naunyn Schmiedebergs Arch Pharmacol* 1985; 329: 414–26.
- 28 Melero CP, Medarde M, San Feliciano A. A short review on cardiotonic steroids and their aminoguanidine analogues. *Molecules* 2000; 5: 51–81.
- 29 Li-Saw-Hee FL, Lip GY. Digoxin revisited. *QJM* 1998; 91: 259–64.
- 30 Lin SC, Way EL. A high affinity Ca²⁺-ATPase in enriched nerve-ending plasma membranes. *Brain Res* 1982; 235: 387–92.
- 31 Blaustein MP. The interrelationship between sodium and calcium fluxes across cell membranes. *Rev Physiol Biochem Pharmacol* 1974; 70: 33–82.
- 32 Ferrandi M, Barassi P, Molinari I, Torielli L, Tripodi G, Minotti E, et al. Ouabain antagonists as antihypertensive agents. *Curr Pharm Des* 2005; 11: 3301–5.
- 33 Yang Z, Luo H, Wang H, Hou H. Preparative isolation of bufalin and cinobufagin from Chinese traditional medicine ChanSu. *J Chromatogr Sci* 2008; 46: 81–5.
- 34 Bick RJ, Poindexter BJ, Sweney RR, Dasgupta A. Effects of ChanSu, a traditional Chinese medicine, on the calcium transients of isolated cardiomyocytes: cardiotoxicity due to more than Na, K-ATPase blocking. *Life Sci* 2002; 72: 699–709.
- 35 Lee E, Kim S, Chung KC, Choo MK, Kim DH, Nam G, et al. 20(S)-ginsenoside Rh2, a newly identified active ingredient of ginseng, inhibits NMDA receptors in cultured rat hippocampal neurons. *Eur J Pharmacol* 2006; 536: 69–77.
- 36 Jia WW, Bu X, Philips D, Yan H, Liu G, Chen X, et al. Rh2, a compound extracted from ginseng, hypersensitizes multidrug-resistant tumor cells to chemotherapy. *Can J Physiol Pharmacol* 2004; 82: 431–7.
- 37 Chen Y, Zhan E, Chen H, Duan X, Guo L. Saponins with low sugar chain from the leaves of *Panax notoginseng* (Burk) F H Chen. *Zhong Yao Cai* 2002; 25: 176–8.
- 38 Lee IK, Kim DH, Lee SY, Kim KR, Choi SU, Hong JK, et al. Triterpenoid acids of *Prunella vulgaris* var *lilacina* and their cytotoxic activities *in vitro*. *Arch Pharm Res* 2008; 31: 1578–83.
- 39 Ryu SY, Oak MH, Yoon SK, Cho DI, Yoo GS, Kim TS, et al. Anti-allergic and anti-inflammatory triterpenes from the herb of *Prunella vulgaris*. *Planta Med* 2000; 66: 358–60.
- 40 Tan LL, Cai X, Hu ZH, Ni XL. Localization and dynamic change of saikosaponin in root of *Bupleurum chinense*. *J Integr Plant Biol* 2008; 50: 951–7.
- 41 Zhou QL, Zhang ZQ, Nagasawa T, Hiai S. The structure activity relationship of saikosaponins and glycyrrhizin derivatives for Na⁺, K⁺-ATPase inhibiting action. *Yao Xue Xue Bao* 1996; 31: 496–501.
- 42 Wang FS, Xu LX, Zhao YJ, Liu AR, Jin LZ, Zhang XQ. Determination of bile acids in bear gall drainage by thin layer chromatographic scanning. *Yao Xue Xue Bao* 1989; 24: 397–400.
- 43 Kurozumi K, Harano T, Yamasaki K, Ayaki Y. Studies on bile acids in bear bile. *J Biochem* 1973; 74: 489–95.
- 44 Liu Y, Chen W, Qiao C, Zhao N. Determination of sarsasapogenin in *Anemarrhena asphodeloides* Bunge by GC. *Zhongguo Zhong Yao Za Zhi* 1999; 24: 554–5, 75.
- 45 Fu WW, Hou WB, Dou DQ, Hua HM, Gui MH, Fu R, et al. Saponins of polygalacic acid type from *Platycodon grandiflorum*. *Yao Xue Xue Bao* 2006; 41: 358–60.
- 46 Zhang M, Zhang Y, Xie J. Simultaneous determination of jujuboside A, B and betulinic acid in semen *Ziziphi spinosae* by high performance liquid chromatography-evaporative light scattering detection. *J Pharm Biomed Anal* 2008; 48: 1467–70.
- 47 Hennell JR, Lee S, Khoo CS, Gray MJ, Bensoussan A. The determination of glycyrrhizic acid in *Glycyrrhiza uralensis* Fisch ex DC (Zhi Gan Cao) root and the dried aqueous extract by LC-DAD. *J Pharm Biomed Anal* 2008; 47: 494–500.
- 48 Sun ZR, Zhai MP, Wang WQ, Li YR. Effects of density on seedling growth and glycyrrhizic acid content in *Glycyrrhiza uralensis*. *Zhongguo Zhong Yao Za Zhi* 2007; 32: 2222–6, 81. Chinese.

- 49 Xu Q, Ma X, Liang X. Determination of astragalosides in the roots of *Astragalus spp* using liquid chromatography tandem atmospheric pressure chemical ionization mass spectrometry. *Phytochem Analysis* 2007; 18: 419–27.
- 50 Lin HC, Ding HY, Wu YC. Two novel compounds from *Paeonia suffruticosa*. *J Nat Prod* 1998; 61: 343–6.
- 51 Zhu TT, Liang H, Zhao YY, Wang B. Isolation and structure identification of C-25 epimers of inokosterone from *Achyranthes bidentata* Blume. *Yao Xue Xue Bao* 2004; 39: 913–6. Chinese.
- 52 Hu T, Zhang X, Ma S, Cheng Y, Yao X. Chemical constituents from *Corydalis yanhusuo*. *Zhongguo Zhong Yao Za Zhi* 2009; 34: 1917–20. Chinese.
- 53 Zhang J, Jin Y, Liu Y, Xiao Y, Feng J, Xue X, et al. Purification of alkaloids from *Corydalis yanhusuo* W T Wang using preparative 2-D HPLC. *J Sep Sci* 2009; 32: 1401–6.
- 54 Zhang WB, Chen CX, Sim SM, Kwan CY. *In vitro* vasodilator mechanisms of the indole alkaloids rhynchophylline and isorhynchophylline, isolated from the hook of *Uncaria rhynchophylla* (Miquel). *Naunyn Schmiedebergs Arch Pharmacol* 2004; 369: 232–8.
- 55 Shi JS, Yu JX, Chen XP, Xu RX. Pharmacological actions of *Uncaria* alkaloids, rhynchophylline and isorhynchophylline. *Acta Pharmacol Sin* 2003; 24: 97–101.
- 56 Nakazawa T, Banba K, Hata K, Nihei Y, Hoshikawa A, Ohsawa K. Metabolites of hirsuteine and hirsutine, the major indole alkaloids of *Uncaria rhynchophylla*, in rats. *Biol Pharm Bull* 2006; 29: 1671–7.
- 57 Horie S, Yano S, Aimi N, Sakai S, Watanabe K. Effects of hirsutine, an antihypertensive indole alkaloid from *Uncaria rhynchophylla*, on intracellular calcium in rat thoracic aorta. *Life Sci* 1992; 50: 491–8.
- 58 Ozaki Y. Vasodilative effects of indole alkaloids obtained from domestic plants, *Uncaria rhynchophylla* Miq and *Amsonia elliptica* Roem et Schult. *Nippon Yakurigaku Zasshi* 1990; 95: 47–54. Japanese.
- 59 Oh H, Mun YJ, Im SJ, Lee SY, Song HJ, Lee HS, et al. Cucurbitacins from *Trichosanthes kirilowii* as the inhibitory components on tyrosinase activity and melanin synthesis of B16/F10 melanoma cells. *Planta Med* 2002; 68: 832–3.
- 60 Takahashi N, Yoshida Y, Sugiura T, Matsuno K, Fujino A, Yamashita U. Cucurbitacin D isolated from *Trichosanthes kirilowii* induces apoptosis in human hepatocellular carcinoma cells *in vitro*. *Int Immunopharmacol* 2009; 9: 508–13.
- 61 Badria FA, Mikhaeil BR, Maatooq GT, Amer MM. Immunomodulatory triterpenoids from the oleogum resin of *Boswellia carterii* Birdwood. *Z Naturforsch C* 2003; 58: 505–16.
- 62 Jayaprakasha GK, Mandadi KK, Poulouse SM, Jadegoud Y, Nagana Gowda GA, Patil BS. Novel triterpenoid from *Citrus aurantium* L. possesses chemopreventive properties against human colon cancer cells. *Bioorg Med Chem* 2008; 16: 5939–51.
- 63 Zhang S. Chemical constituents of the *Sparganium stoloniferum* Buch.-Ham. *Zhongguo Zhong Yao Za Zhi* 1995; 20: 486–7. Chinese.
- 64 Zheng Y, Yang XW. Two new lanostane triterpenoids from *Poria cocos*. *J Asian Nat Prod Res* 2008; 10: 323–8.
- 65 Chen RJY, Chung TY, Li FY, Yang WH, Jinn TR, Tzen JTC. Steroid-like compounds in Chinese medicines promote blood circulation via inhibition of Na⁺/K⁺-ATPase. *Acta Pharmacol Sin* 2010; 31: 696–702.
- 66 Li XC, Yu C, Sun WK, Liu GY, Jia JY, Wang YP. Pharmacokinetics of magnesium lithospermate B after intravenous administration in beagle dogs. *Acta Pharmacol Sin* 2004; 25: 1402–7.
- 67 Shigematsu T, Tajima S, Nishikawa T, Murad S, Pinnell SR, Nishioka I. Inhibition of collagen hydroxylation by lithospermic acid magnesium salt, a novel compound isolated from *Salviae miltiorrhizae* Radix. *Biochim Biophys Acta* 1994; 1200: 79–83.
- 68 Lu Y, Foo LY. Polyphenolics of *Salvia* – a review. *Phytochemistry* 2002; 59: 117–40.
- 69 Wu XJ, Wang YP, Wang W, Sun WK, Xu YM, Xuan LJ. Free radical scavenging and inhibition of lipid peroxidation by magnesium lithospermate B. *Acta Pharmacol Sin* 2000; 21: 855–8.
- 70 Kasimu R, Tanaka K, Tezuka Y, Gong ZN, Li JX, Basnet P, et al. Comparative study of seventeen *Salvia* plants: aldose reductase inhibitory activity of water and MeOH extracts and liquid chromatography-mass spectrometry (LC-MS) analysis of water extracts. *Chem Pharm Bull* 1998; 46: 500–4.
- 71 Yokozawa T, Chung HY, Dong E, Oura H. Confirmation that magnesium lithospermate B has a hydroxyl radical-scavenging action. *Exp Toxicol Pathol* 1995; 47: 341–4.
- 72 Yokozawa T, Lee TW, Oura H, Nonaka G, Nishioka I. Effect of magnesium lithospermate B in rats with sodium-induced hypertension and renal failure. *Nephron* 1992; 60: 460–5.
- 73 O K, Lynn EG, Vazhappilly R, Au-Yeung KK, Zhu DY, Siow YL. Magnesium tanshinolate B (MTB) inhibits low density lipoprotein oxidation. *Life Sci* 2001; 68: 903–12.
- 74 Tzen JT, Jinn TR, Chen YC, Li FY, Cheng FC, Shi LS, et al. Magnesium lithospermate B possesses inhibitory activity on Na⁺,K⁺-ATPase and neuroprotective effects against ischemic stroke. *Acta Pharmacol Sin* 2007; 28: 609–15.
- 75 Chen YC, Jinn TR, Chung TY, Li FY, Fan RJ, Tzen JT. Magnesium lithospermate B extracted from *Salvia miltiorrhiza* elevates intracellular Ca²⁺ level in SH-SY5Y cells. *Acta Pharmacol Sin* 2010; 31: 923–9.
- 76 Kulikov A, Eva A, Kirch U, Boldyrev A, Scheiner-Bobis G. Ouabain activates signaling pathways associated with cell death in human neuroblastoma. *Biochim Biophys Acta* 2007; 1768: 1691–702.
- 77 Zhu S, Zou K, Cai S, Meselhy MR, Komatsu K. Simultaneous determination of triterpene saponins in ginseng drugs by high-performance liquid chromatography. *Chem Pharm Bull* 2004; 52: 995–8.
- 78 Dan M, Su MM, Gao XF, Zhao T, Zhao AH, Xie GX, et al. Metabolite profiling of *Panax notoginseng* using UPLC-ESI-MS. *Phytochemistry* 2008; 69: 2237–44.
- 79 Hasegawa H. Proof of the mysterious efficacy of ginseng: basic and clinical trials: metabolic activation of ginsenoside: deglycosylation by intestinal bacteria and esterification with fatty acid. *J Pharmacol Sci* 2004; 95: 153–7.
- 80 Sengupta S, Toh SA, Sellers LA, Skepper JN, Koolwijk P, Leung HW, et al. Modulating angiogenesis: the yin and the yang in ginseng. *Circulation* 2004; 110: 1219–25.
- 81 Lei XL, Chiou GC. Cardiovascular pharmacology of *Panax notoginseng* (Burk) F H Chen and *Salvia miltiorrhiza*. *Am J Chin Med* 1986; 14: 145–52.
- 82 Cicero AF, Vitale G, Savino G, Arletti R. *Panax notoginseng* (Burk) effects on fibrinogen and lipid plasma level in rats fed on a high-fat diet. *Phytother Res* 2003; 17: 174–8.
- 83 Chen RJY, Chung TY, Li FY, Lin NH, Tzen JTC. Effect of sugar positions in ginsenosides and their inhibitory potency on Na⁺/K⁺-ATPase activity. *Acta Pharmacol Sin* 2009; 30: 61–9.
- 84 Nah SY, Kim DH, Rhim H. Ginsenosides: are any of them candidates for drugs acting on the central nervous system? *Cns Drug Rev* 2007; 13: 381–404.
- 85 Tawab MA, Bahr U, Karas M, Wurglics M, Schubert-Zsilavecz M. Degradation of ginsenosides in humans after oral administration. *Drug Metab Dispos* 2003; 31: 1065–71.
- 86 Shang HC, Gao XM, Guo LP. The optimization of different combinations and distributions between Danshen and Sanqi along with syn-

- thetical information evaluation. *Drug Evaluation* 2005; 2: 209–11. Chinese.
- 87 Li XC, Yu C, Cai YB, Liu GY, Jia JY, Wang YP. Simultaneous determination of six phenolic constituents of danshen in human serum using liquid chromatography/tandem mass spectrometry. *J Chromatogr B* 2005; 820: 41–7.
- 88 Tawab MA, Bahr U, Karas M, Wurglics M, Schubert-Zsilavecz M. Degradation of ginsenosides in humans after oral administration. *Drug Metab Dispos* 2003; 31: 1065–71.
- 89 Oian TX, Cai ZW, Wong RNS, Jiang ZH. Liquid chromatography mass spectrometric analysis of rat samples for *in vivo* metabolism and pharmacokinetic studies of ginsenoside Rh2. *Rapid Commun Mass Sp* 2005; 19: 3549–54.
- 90 Clausen T, Van Hardeveld C, Everts ME. Significance of cation transport in control of energy metabolism and thermogenesis. *Physiol Rev* 1991; 71: 733–74.
- 91 Friberg H, Wieloch T. Mitochondrial permeability transition in acute neurodegeneration. *Biochimie* 2002; 84: 241–50.
- 92 Astrup J. Energy-requiring cell functions in the ischemic brain. Their critical supply and possible inhibition in protective therapy. *J Neurosurg* 1982; 56: 482–97.
- 93 Annunziato L, editor. *New strategies in stroke intervention*. New York: Springer; 2009.
- 94 Wang JK, Portbury S, Thomas MB, Barney S, Ricca DJ, Morris DL, *et al*. Cardiac glycosides provide neuroprotection against ischemic stroke: discovery by a brain slice-based compound screening platform. *Proc Natl Acad Sci USA* 2006; 103: 10461–6.
- 95 Zhang YG, Liu TP. Influences of ginsenosides Rb1 and Rg1 on reversible focal brain ischemia in rats. *Zhongguo Yao Li Xue Bao* 1996; 17: 44–8.
- 96 Tian J, Fu F, Geng M, Jiang Y, Yang J, Jiang W, *et al*. Neuroprotective effect of 20(S)-ginsenoside Rg3 on cerebral ischemia in rats. *Neurosci Lett* 2005; 374: 92–7.
- 97 Zhou XM, Cao YL, Dou DQ. Protective effect of ginsenoside Re against cerebral ischemia/reperfusion damage in rats. *Biol Pharm Bull* 2006; 29: 2502–5.
- 98 Yuan QL, Yang CX, Xu P, Gao XQ, Deng L, Chen P, *et al*. Neuroprotective effects of ginsenoside Rb1 on transient cerebral ischemia in rats. *Brain Res* 2007; 1167: 1–12.
- 99 Chen LM, Zhou XM, Cao YL, Hu WX. Neuroprotection of ginsenoside Re in cerebral ischemia-reperfusion injury in rats. *J Asian Nat Prod Res* 2008; 10: 439–45.
- 100 Cho SO, Ban JY, Kim JY, Ju HS, Lee IS, Song KS, *et al*. Anti-ischemic activities of *Aralia cordata* and its active component, oleanolic acid. *Arch Pharm Res* 2009; 32: 923–32.