

Original Article

Chronic ethanol consumption up-regulates protein-tyrosine phosphatase-1B (PTP1B) expression in rat skeletal muscle

Li GAO¹, Xu ZHANG¹, Fu-rong WANG³, Ming-feng CAO¹, Xiu-juan ZHANG¹, Nan-nan SUN¹, Jie ZHANG², Ling GAO², Jia-jun ZHAO¹ *

¹Department of Endocrinology, Provincial Hospital affiliated to Shandong University, Institute of Endocrinology, Shandong Academy of Clinical Medicine, Ji-nan 250021, China; ²Laboratory Center, Provincial Hospital Affiliated to Shandong University, Ji-nan 250021, China; ³Department of Pharmacology, Shandong University of Traditional Chinese Medicine, Ji-nan 250355, China

Aim: To investigate the potential effects of chronic ethanol intake on protein-tyrosine phosphatase-1B (PTP1B) and the insulin receptor signaling pathway in rat skeletal muscle.

Methods: Rats received ethanol treatment at a daily dose of 0 (control), 0.5 (group L), 2.5 (group M) or 5 g·kg⁻¹ (group H) via gastric gavage for 22 weeks. *In vivo* insulin sensitivity was measured using a hyperinsulinemic-euglycemic clamp. Expression of PTP1B in skeletal muscles was examined at both the mRNA (real-time PCR) and protein (Western blot) levels. PTP1B activity was assayed with a *p*-nitrophenol phosphate (PNPP) hydrolysis method. Changes of insulin signaling in skeletal muscle were analyzed with Western blotting.

Results: The activity and expression of PTP1B were dose-dependently elevated 1.6 and 2.0 fold in the skeletal muscle by ethanol, respectively, at the doses of 2.5 and 5 g·kg⁻¹·d⁻¹. Total IR β and IRS-1, as well as their phosphorylated forms, were decreased by ethanol at the two higher doses. Moreover, chronic ethanol consumption resulted in a significant inhibition of the association between IRS-1 and the p85 subunit of phosphatidylinositol 3-kinase, inhibition of Akt phosphorylation and reduced levels of mitogen-activated protein kinase phosphorylation.

Conclusion: Chronic ethanol intake at 2.5 and 5 g·kg⁻¹·d⁻¹ sufficient doses can down-regulate the expression of IR β , P-IR β , and IRS-1, as well as the phosphorylated forms of IRS-1 and Akt, in rat skeletal muscle, possibly through increased PTP1B activity.

Keywords: ethanol; protein-tyrosine phosphatase-1B; phosphatidylinositol 3-kinase; mitogen-activated protein kinase; insulin resistance

Acta Pharmacologica Sinica (2010) 31: 1576–1582; doi: 10.1038/aps.2010.161; published online 22 Nov 2010

Introduction

Alcohol consumption is associated with insulin resistance^[1,2]. Long-term exposure to excessive alcohol may lead to glucose intolerance^[3,4]. Insulin produces a diverse array of metabolic actions by binding to a heterotetrameric receptor protein consisting of two α and two β subunits^[5]. Phosphorylated insulin receptor (IR) binds to and activates IR substrate (IRS), which in turn leads to translocation of glucose transporters to the cell surface via a complicated cascade of signaling events that include phosphatidylinositol 3-kinase (PI3K) and Akt/protein kinase B (PKB)^[6,7].

The insulin signaling pathway is tightly regulated by the

balance of phosphorylation and dephosphorylation at several key molecules. Not surprisingly, protein-tyrosine phosphatases (PTPases) play a critical role in the regulation of carbohydrate metabolism^[8,9]. PTP1B is a member of the PTPase family^[10,11]. PTP1B can inhibit the insulin-signaling pathway by dephosphorylating IR and IRS. PTP1B has been reported to be elevated in diabetes and in insulin-resistant states^[12]. Transgenic overexpression of PTP1B decreased glucose uptake in muscle^[13]. Ablation of PTP1B, in contrast, improves glucose uptake^[14]. Mice lacking PTP1B are hyper-responsive to insulin and resistant to diet-induced obesity^[15].

Previous studies have demonstrated that ethanol may impair mitochondrial function and inhibit insulin-stimulated survival of cultured neuronal cells^[16]. Monte *et al*^[17], for example, found that increased PTP1B contributes to impaired insulin sensitivity in brain tissue. Skeletal muscle is the larg-

* To whom correspondence should be addressed.

E-mail jjzhao@medmail.com.cn

Received 2010-01-13 Accepted 2010-07-06

est organ that utilizes glucose in an insulin-dependent manner and therefore represents a key site for the pathogenesis of diabetes, regardless of the specific events that trigger glucose intolerance. The present study was designed to examine whether insulin intolerance induced by chronic ethanol exposure is correlated with PTP1B expression/activity in skeletal muscle in a rat model of chronic ethanol exposure. Molecular targets of PTP1B (eg, IR and IRS-1) and downstream molecules of the insulin signaling pathway (eg, PI3K and Akt) were also examined.

Materials and methods

Reagents and antibodies

Horseradish peroxidase (HRP)-labeled anti-rabbit and anti-mouse immunoglobulin G (IgG) antibodies were purchased from Upstate Biotechnology (Lake Placid, NY, USA). Total and phosphorylated (P) IR β , IRS-1, Akt, and mitogen-activated protein kinase (MAPK) as well as PTP1B antibodies were purchased from Santa Cruz Biotechnology (Santa Cruz, CA, USA). All other reagents were purchased from Sigma (St Louis, MO).

Animal care and feeding

Sixty adult male Wistar rats (180–200 g, provided by the Animal Research Center of Shandong University) were housed individually at 25 °C and 50% humidity under a 12:12 h light/dark cycle. The rats had unlimited access to standard rat chow and tap water.

Chronic ethanol feeding model

Rats were acclimated for one week prior to receiving daily ethanol (C, control, 0 g·kg⁻¹·d⁻¹; H, 5 g·kg⁻¹·d⁻¹; M, 2.5 g·kg⁻¹·d⁻¹; L, 0.5 g·kg⁻¹·d⁻¹ via gastric gavage; *n*=15 in each group) for 22 weeks. Distilled water or edible (50% *v/v*; Ji-nan Baotu Spring Distillery, Shandong, China) was delivered once daily at 8:00–9:00 AM. Food and water consumption as well as body weight were monitored weekly. At the end of the 22-week treatment period, food was withdrawn 12 h, and blood samples were taken for biochemical analysis. Insulin sensitivity was determined using a hyperinsulinemic-euglycemic clamp. At the completion of the clamp, rats were euthanized with sodium pentobarbital (100 mg/kg ip; Abbott Laboratories). The gastrocnemius muscle was quickly removed, washed in cold phosphate-buffered saline (PBS, pH 7.4) and stored in liquid nitrogen for subsequent *in vitro* analysis. Experimental procedures were approved by the Shandong University Institutional Animal Care and Use Committee.

Hyperinsulinemic-euglycemic clamp

Insulin sensitivity was determined using a hyperinsulinemic-euglycemic clamp^[18]. Rats were anesthetized with pentobarbital sodium administered intraperitoneally after fasting for 8 h. Insulin (Nordisk, Denmark) was infused at 8 milliunits·kg⁻¹·min⁻¹ for 2 h via the left jugular and left femoral vein. Blood glucose level was measured every 5 min via a catheter in the left jugular vein. Twenty percent glucose solution was infused via the right femoral vein. The blood glucose

concentration was maintained at 5.2±0.2 mmol/L by adjusting the rate of glucose infusion. The glucose infusion rate in the second hour of the experiment was considered to reflect insulin sensitivity.

Biochemical analysis

Plasma ethanol concentrations were measured using a commercial kit (Sigma, St Louis, MO). Blood glucose levels were determined by a glucose oxidase method after 12-h fasting. Serum insulin levels were measured by radioimmunoassay (Northern Bioengineering Institute, China). Serum concentrations of aspartate aminotransferase, alanine aminotransferase, triglyceride and cholesterol were measured using an automated biochemistry analyzer (Hitachi, Japan).

Real-time PCR

Total RNA was extracted from the gastrocnemius muscle using the standard Trizol RNA isolation method. Reverse transcription of 2 μ g of RNA was carried out using a TaKaRa RT-PCR kit. The qualities of RNA and cDNA were checked using a DU640 nucleic acid analyzer (Beckman, USA). The specific primer sequences used in the real-time PCR are: PTP1B forward: CGAGGGTGCAAAGTTCATCAT, reverse: GGTCTTCATGGGAAAGCTCCTT; GAPDH forward: TGGTGGACCTCATGGCCTAC, reverse: CAGCAACTGAGGGCCTCTCT. One hundred nanograms (ng) of cDNA was used as the template in a 25 μ L reaction volume and was amplified by real-time PCR assay using a QuantiTect SYBR Green kit (Qiagen, USA) and the ABI 7500 Prism real-time PCR instrument and software (Prism 7500; ABI, USA). GAPDH was used as the internal control. The relative quantification of gene expression was analyzed by the 2^{- $\Delta\Delta$ Ct} method^[19, 20], and the results were expressed as the level of change with respect to control values.

Western blotting

Aliquots (80 μ g protein) of gastrocnemius muscle homogenates were subjected to 7.5% SDS-PAGE and then transferred electrophoretically onto nitrocellulose membranes (Millipore, Billerica, MA). The membrane was blocked with 5% nonfat milk in 10 mmol/L Tris containing 150 mmol/L NaCl and 0.02% Tween-20 for 1 h at room temperature. The nitrocellulose blots were incubated overnight at 4 °C with a primary antibody (Santa Cruz Biotechnology; Santa Cruz, CA). Incubation with secondary antibody, horseradish peroxidase (HRP)-labeled anti-rabbit or anti-mouse IgG antibody (Upstate Biotechnology; Lake Placid, NY) lasted for 1 h. Target proteins were quantified using an enhanced chemiluminescence detection system (Amersham), followed by autoradiography with preflashed Kodak XAR films (Mannus, Amazonas-Brazil) using an Alphaimager 2200 system. All experiments included β -actin as an internal control.

PTP1B activity assay

PTP1B activity was assayed by a *p*-nitrophenol phosphate (PNPP) hydrolysis method. Briefly, gastrocnemius muscles

were removed and homogenized in a buffer containing (mmol/L): Tris 20 (pH 7.6), EDTA 5, PMSF 2, EGTA 1 and NaCl 130, with aprotinin 0.1 mg/mL and 1% Triton X-100. The lysates were centrifuged at $15000\times g$ for 25 min at 4 °C. PTP1B was immunoprecipitated with anti-PTP1B antibody (Upstate Biotechnology). The immunoprecipitates were incubated in a phosphatase reaction buffer (20 mmol/L HEPES, pH 7.4, 150 mmol/L NaCl, 5 mmol/L dithiothreitol, 1 mmol/L PNPP) for 20 min at 37 °C. The reactions were stopped with 0.2 mol/L NaOH. The absorbance was measured at 410 nm. The assay was run in triplicate.

Statistical analysis

All experiments were repeated at least five times. Values are reported as means \pm standard deviations (SD). Data were analyzed by using SPSS 13.0 software (SPSS, Chicago, IL, USA). Statistical significance was assessed by ANOVA and unpaired Student's *t*-tests. Differences were considered statistically significant when $P < 0.05$.

Results

Characterization of chronically ethanol-fed rats

Chronic ethanol treatment decreased body weight and increased serum alanine and aspartate aminotransferase levels, as well as cholesterol and triglyceride levels (Table 1).

Hyperinsulinemic-euglycemic clamps

To investigate whether rats receiving ethanol were insulin resistant, we measured the peripheral insulin sensitivity with a hyperinsulinemic-euglycemic clamp. In this technique, plasma glucose is maintained at a steady state within the euglycemic range while plasma insulin levels are elevated to a desired plateau. The higher the glucose infusion rate needed to maintain euglycemia, the greater the insulin sensitivity. The hyperinsulinemic-euglycemic clamp experiments revealed impaired insulin sensitivity (Table 1). The rates of glucose infusion needed to maintain glucose levels at 5.2 ± 0.2 mmol/L were 11.51 ± 1.32 mg \cdot kg $^{-1}\cdot$ min $^{-1}$ in the vehicle control rats and were decreased by 36% ($P < 0.05$ vs control) and 51% ($P < 0.01$ vs control) in rats receiving 2.5 and 5 g \cdot kg $^{-1}\cdot$ d $^{-1}$ ethanol, respectively. However, the lower ethanol dose of 0.5 g \cdot kg $^{-1}\cdot$ d $^{-1}$ did not affect glucose infusion rate significantly.

Ethanol up-regulates the expression of PTP1B

To investigate whether PTP1B expression changes during the decreased glucose uptake in rat skeletal muscle after chronic ethanol feeding, we measured PTP1B mRNA and protein levels using real-time PCR (Figure 1A) and Western blotting (Figure 1B). Our findings indicate that ethanol increased

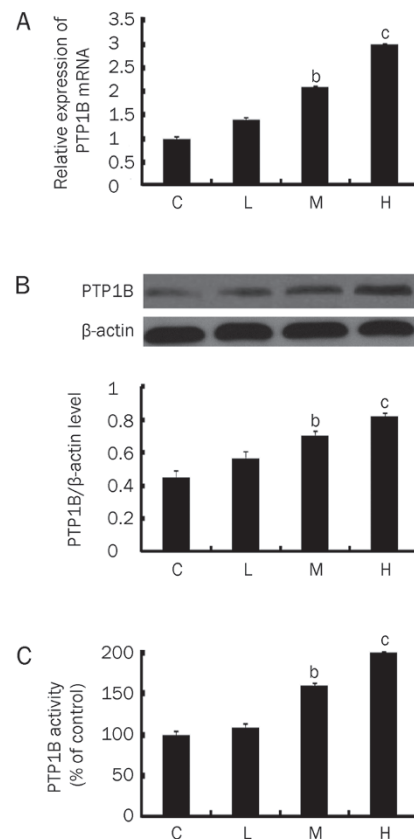


Figure 1. Effects of ethanol on PTP1B in rat skeletal muscle. (A) PTP1B mRNA levels were determined using RT-PCR. (B) PTP1B protein levels were determined by Western blot analysis. (C) PTP1B activities were assayed using PTP1B assay kit. Compared to the control group, the PTP1B levels in groups M and H increased significantly ($^bP < 0.05$, $^cP < 0.01$ vs group C). $n = 15$. Values are given as means \pm SD. C, control; H, 5 g \cdot kg $^{-1}\cdot$ d $^{-1}$ ethanol treatment; M, 2.5 g \cdot kg $^{-1}\cdot$ d $^{-1}$ ethanol treatment; and L, 0.5 g \cdot kg $^{-1}\cdot$ d $^{-1}$ ethanol treatment.

Table 1. Characterization of ethanol-fed rats and hyperinsulinemic-euglycemic clamp data. $n = 7$. Values are given as means \pm SD. $^bP < 0.05$, $^cP < 0.01$ vs group C. BW, body weight; ALT, alanine aminotransferase; AST, aspartate aminotransferase; TG, triglyceride; Tch, total cholesterol; GIR, glucose infusion rate.

Group	BW (g)	Insulin (IU/L)	ALT (nkat/L)	AST (nkat/L)	TG (mmol/L)	Tch (mmol/L)	Ethanol (mg/L)	GIR (mg \cdot kg $^{-1}\cdot$ min $^{-1}$)
C	285 \pm 14.1	46.7 \pm 12.7	675.3 \pm 76.7	3254 \pm 211.4	0.52 \pm 0.1	1.1 \pm 0.2	0	11.51 \pm 1.32
L	277 \pm 10.5	48.5 \pm 10.2	899.7 \pm 97.6 ^b	3876 \pm 173.1 ^b	0.73 \pm 0.1 ^b	1.3 \pm 0.1 ^b	111 \pm 22.8	12.39 \pm 1.66
M	262 \pm 17.3 ^c	51.2 \pm 10.6	1417.8 \pm 126.7 ^c	3973 \pm 223.9 ^b	0.76 \pm 0.1 ^b	1.6 \pm 0.3 ^b	626 \pm 11.1	7.31 \pm 1.39 ^b
H	248 \pm 12.8 ^b	54.6 \pm 9.8	1720.7 \pm 138.5 ^c	4477 \pm 312.6 ^c	0.88 \pm 0.3 ^b	2.0 \pm 0.2 ^b	958 \pm 22.9	5.65 \pm 1.83 ^c

C, control; H, 5 g \cdot kg $^{-1}\cdot$ d $^{-1}$ ethanol treatment; M, 2.5 g \cdot kg $^{-1}\cdot$ d $^{-1}$ ethanol treatment; and L, 0.5 g \cdot kg $^{-1}\cdot$ d $^{-1}$ ethanol treatment.

PTP1B protein and mRNA levels in skeletal muscles in a dose-dependent manner ($P < 0.05$ and < 0.01 for rats receiving 2.5 and 5 $\text{g}\cdot\text{kg}^{-1}\cdot\text{d}^{-1}$ ethanol, respectively, *vs* vehicle controls). The lower ethanol dose of 0.5 $\text{g}\cdot\text{kg}^{-1}\cdot\text{d}^{-1}$ did not affect the expression of PTP1B significantly.

PTP1B activity in muscles of control and ethanol-fed rats

In this study, PTP1B activities were assessed using a PTP1B assay kit (Figure 1C). Our results indicated that PTP1B activities were significantly elevated in both rats receiving 5 (2-fold, $P < 0.01$) and 2.5 $\text{g}\cdot\text{kg}^{-1}\cdot\text{d}^{-1}$ (1.6-fold, $P < 0.05$) ethanol, compared to PTP1B activities in the vehicle control rats. However, the lower dose of 0.5 $\text{g}\cdot\text{kg}^{-1}\cdot\text{d}^{-1}$ did not change PTP1B activity in the skeletal muscles significantly.

Ethanol down-regulates IR β and IRS-1 protein expression

We examined a potential dose-response effect of ethanol on IR β and IRS-1 content by Western blotting. Our results showed that IR β and IRS-1 protein levels were significantly decreased (Figure 2, 3) in rats receiving ethanol at 2.5 and 5 $\text{g}\cdot\text{kg}^{-1}\cdot\text{d}^{-1}$ but not 0.5 $\text{g}\cdot\text{kg}^{-1}\cdot\text{d}^{-1}$. The phosphorylated forms of IR β and IRS-1 (P-IR β and P-IRS-1) were also decreased by chronic ethanol in a similar manner. Furthermore, ethanol exposure caused a dose-dependent decline in the P-IR β /IR β protein ratios ($P < 0.01$, 0.05 and 0.05 for the dose of 5, 2.5, and 0.5 $\text{g}\cdot\text{kg}^{-1}\cdot\text{d}^{-1}$, respectively) and a decline in the P-IRS-1/IRS-1 protein ratios with 5 ($P < 0.01$) and 2.5 $\text{g}\cdot\text{kg}^{-1}\cdot\text{d}^{-1}$ doses ($P < 0.05$, Figure 2, 3).

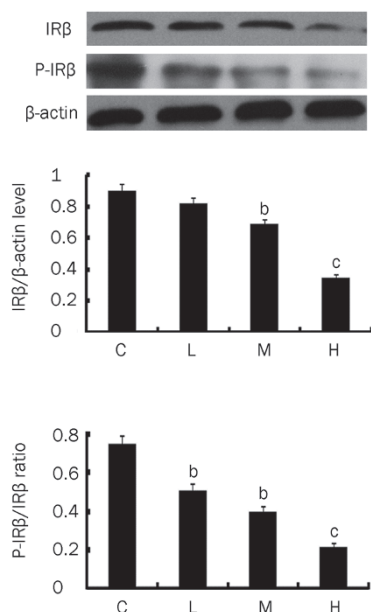


Figure 2. Expression of IR β and P-IR β protein levels in rat skeletal muscle. Levels of IR β and P-IR β protein were determined by Western blot analysis. Compared to the control group, the IR β and P-IR β proteins decreased significantly in groups M and H, while P-IR β proteins decreased significantly in all ethanol-treated groups ($^bP < 0.05$, $^cP < 0.01$ vs group C). $n = 15$. Values are given as means \pm SD.

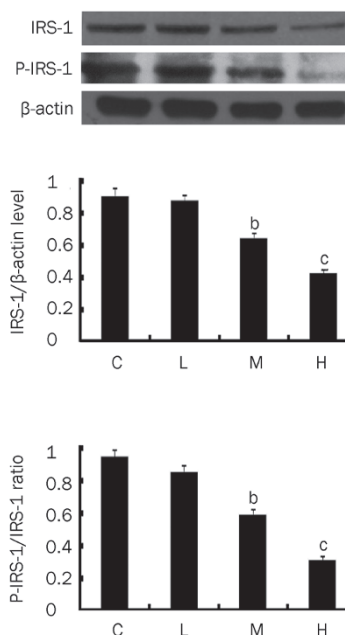


Figure 3. Expression of IRS-1 and P-IRS-1 protein levels in rat skeletal muscle. Protein levels for IRS-1 and P-IRS-1 were determined by Western blot analysis. Compared to the control group, levels in groups M and H decreased significantly ($^bP < 0.05$, $^cP < 0.01$ vs group C). $n = 15$. Values are given as means \pm SD.

Effects of ethanol on PI3K

The association between IRS-1 and the p85 subunit of PI3K in skeletal muscle was also decreased ($P < 0.05$ and $P < 0.01$ for 2.5 and 5 $\text{g}\cdot\text{kg}^{-1}\cdot\text{d}^{-1}$, respectively) by chronic ethanol treatment (Figure 4), which was consistent with changes in phosphorylation of IRS-1. In contrast, p85 protein levels were similar in control and ethanol-treated groups (Figure 4).

Effects of ethanol on Akt

We found that phosphorylation of Akt was inhibited by chronic ethanol exposure, as shown in Figure 5. This regulation was significant in rats receiving ethanol at 5 ($P < 0.01$) and 2.5 $\text{g}\cdot\text{kg}^{-1}\cdot\text{d}^{-1}$ ($P < 0.05$), but not significantly different at 0.5 $\text{g}\cdot\text{kg}^{-1}\cdot\text{d}^{-1}$ ($P > 0.05$). However, there were no differences in total Akt protein levels among the groups (Figure 5).

Effects of ethanol on MAPK

We next examined the protein expression of MAPK by western blotting. Chronic ethanol consumption resulted in significantly reduced levels of P-MAPK ($P < 0.05$ and $P < 0.01$ for 2.5 and 5 $\text{g}\cdot\text{kg}^{-1}\cdot\text{d}^{-1}$, respectively). The lower dose of 0.5 $\text{g}\cdot\text{kg}^{-1}\cdot\text{d}^{-1}$ did not affect the expression of P-MAPK (Figure 6). In contrast, the levels of MAPK proteins were similar in control and ethanol-treated groups (Figure 6).

Discussion

The Lieber-Decarli ethanol diet (where the ratio of calories supplied by ethanol is assigned as a fixed value) is more widely used in animal studies. However, this method also has

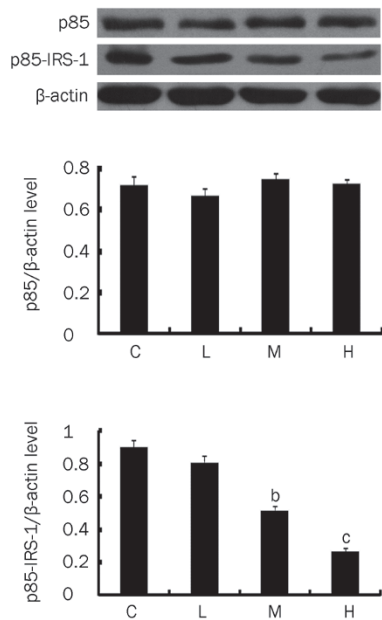


Figure 4. Expression of PI3K protein levels in rat skeletal muscle. Levels of p85 subunit of PI3K and p85-associated IRS-1 protein were determined by Western blot analysis. Compared to the control group, the p85-associated IRS-1 proteins in groups M and H decreased significantly (^b $P < 0.05$, ^c $P < 0.01$ vs group C). In contrast, p85 protein levels were similar in control and ethanol-treated groups. $n = 15$. Values are given as means \pm SD.

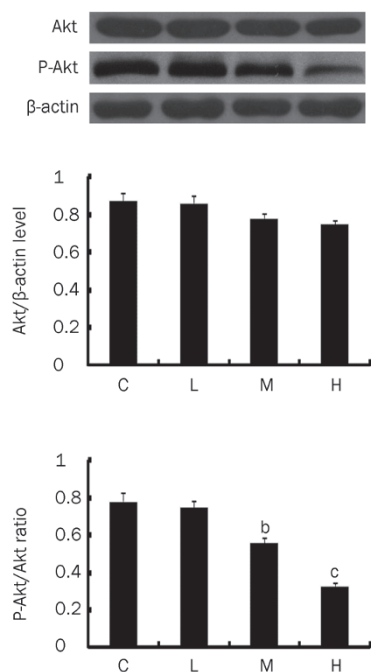


Figure 5. Expression of Akt and P-Akt protein levels in rat skeletal muscle determined by Western blot analysis. Compared to the control group, the P-Akt proteins in groups M and H decreased significantly (^b $P < 0.05$, ^c $P < 0.01$ vs group C). There were no differences in Akt protein levels among the groups. $n = 15$. Values are given as means \pm SD.

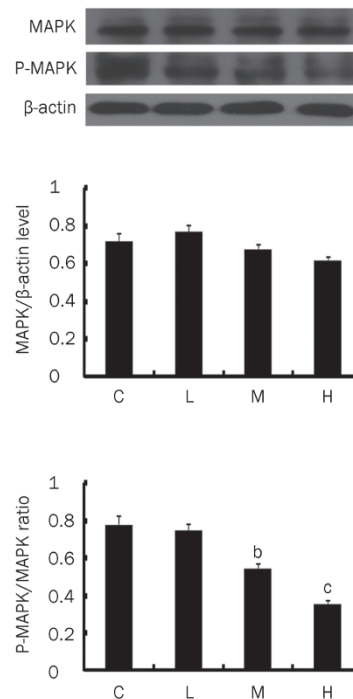


Figure 6. Expression of MAPK and P-MAPK protein levels in rat skeletal muscle were determined by Western blot analysis. Compared to the control group, the P-MAPK proteins in groups M and H decreased significantly (^b $P < 0.05$, ^c $P < 0.01$ vs group C). There were no differences in MAPK protein levels among the groups. $n = 15$. Values are given as means \pm SD.

a shortcoming that cannot be ignored – if the quantity of food consumed daily by the animals varies, there is variability in the daily quantity of ethanol consumed. In the present study, we were most concerned with standardizing the quantity of ethanol fed daily and, therefore, administered a 50% ethanol solution to each animal according to its body weight. Previous studies from our laboratory^[21] and from another group^[22] revealed compromised insulin-stimulated glucose uptake upon chronic ethanol exposure. Using hyperinsulinemic-euglycemic clamps, the current study confirmed decreased insulin sensitivity in rats receiving chronic ethanol at relatively high doses of 2.5 to 5 g·kg⁻¹·d⁻¹, but not at the lower dose of 0.5 g·kg⁻¹·d⁻¹. Consistent with the reported increase in PTP1B in diabetic patients, we found a significantly up-regulated expression of PTP1B in rats chronically exposed to high doses of ethanol, suggesting that increased PTP1B expression/activity plays an important role in the development of glucose intolerance induced by ethanol. The most compelling evidence supporting a role for PTP1B in the literature is increased insulin sensitivity and resistance to diet-induced obesity in PTP1B knockout mice^[15]. Insulin receptors in these mice are highly phosphorylated and present in large amounts in the cell membrane of skeletal muscle and liver^[15].

Onishi *et al* provided preliminary evidence suggesting that ethanol exposure impairs PI3K^[22], a key step in the signaling

cascade that mediates insulin action. Results from the current study demonstrated reduced P-IRS-1, p85-IRS-1 association, P-Akt and P-MAPK in skeletal muscle from rats chronically exposed to high doses of ethanol, indicating that the detrimental effects of ethanol on insulin sensitivity are mediated by the PI3K and MAPK pathways. Impaired signaling through IRS-2 is another candidate for mediating the IRS-dependent effects as phosphorylation of IRS-2 could activate PI3 kinase in the skeletal muscle^[23]. Potential involvement of IRS-2 in ethanol-induced glucose intolerance is currently under investigation in our laboratory.

Our results are consistent with studies showing that excessive consumption of alcohol can lead to glucose intolerance^[4,5]. These results are contrary to previous *in vitro* studies showing that regular, moderate alcohol drinkers were more insulin-sensitive than abstainers^[24]. In this study, we found that low ethanol intake cannot increase insulin sensitivity. We believe that the reason may be attributed to the different alcohol intervention time, different testing methods and tissue specificity. Thus, some compensatory mechanism(s) may exist to regulate the efficiency of signaling effectors. Further investigation is necessary to explore these possibilities.

For decades it has been argued whether alcohol exerts its toxic effects directly on skeletal muscle or indirectly through its metabolites, and the regulatory role of PTP1B activity in this process is not clear. In the past decade, several studies have documented the fact that cardiomyocyte loss is a critical factor in the development and progression of ventricular dysfunction and failure, and apoptosis of myocardial cells has been associated with the progression of cardiomyopathy^[25]. Moreover, animal experiments indicated that chronic prenatal ethanol exposure increases neuronal cell apoptosis in the hippocampus of a term fetus, which appears to occur via an intrinsic, mitochondrial-directed mechanism initiated by leakage of pro-apoptotic cytochrome *c* from mitochondria into the cytoplasm^[26]. Interestingly, both acetaldehyde and ethanol have been shown to accelerate apoptotic cell death in various cells^[27]. Therefore, apoptosis may be one of the possible mechanisms through which ethanol down-regulates gene expression. A previous study of PTP1B expression in different tissues suggested that small molecules in the body, such as NO or H₂O₂, may regulate PTP1B activity^[28]. Sreejayan *et al* demonstrated that NO could enhance PTP1B activity in smooth muscles and down-regulate insulin signal transduction^[29]. Mahadev *et al* showed that H₂O₂ could inhibit PTP1B activity in hepatoma and fat cells^[30], suggesting that redox status could affect PTP1B activity. Whether the observed action of ethanol on insulin sensitivity is attributed to its reducing properties remains to be investigated.

The results of our experiments linked chronic consumption of ethanol to aberrantly increased expression and enzymatic activity of PTP1B, which has a pivotal role in regulating PI3K-activated insulin signaling, and this effect is accompanied by down-regulation of P-IR β , P-IRS-1, P-Akt, and P-MAPK protein expression. Our results suggest a role for PTP1B specifically in mediating the IRS-1/PI3K/Akt pathway of insulin

resistance induced by excessive ethanol consumption in rat skeletal muscle. However, the mechanism by which ethanol feeding increases PTP1B expression is unclear and needs further investigation. It remains to be seen if modulating PTP1B levels via gene transfer can ameliorate the symptoms of insulin resistance in animal models of this disease. If so, this may prove to be a potential therapeutic avenue for human patients.

Acknowledgements

This work was supported by a grant from the National Natural Science Foundation of China (Grant No 30940038) and Shandong Province (Grant No Q2006C15). The Science Center of Shandong Provincial Hospital provided technical support for this study.

Author contribution

Jia-jun ZHAO and Ling GAO designed the research; Li GAO, Xu ZHANG and Ming-feng CAO performed the research; Fu-rong WANG, Nan-nan SUN and Jie ZHANG analyzed the data; Li GAO, Xiu-juan ZHANG and Ling GAO wrote the paper.

References

- 1 Fowman DT. The effect of ethanol and its metabolites on carbohydrate, protein and lipid metabolism. *Ann Clin Lab Sci* 1988; 18: 181–9.
- 2 Rimm EB, Chan J, Stampfer MJ, Colditz GA, Willett WC. Prospective study of cigarette smoking, alcohol use, and the risk of diabetes in men. *BMJ* 1995; 310: 555–9.
- 3 Dornhorst A, Ouyang A. Effect of alcohol on glucose tolerance. *Lancet* 1971; 2(7731): 957–9.
- 4 Shelmet JJ, Reichard GA, Skutches CL, Hoeldtke RD, Owen OE, Boden G, *et al*. Ethanol causes acute inhibition of carbohydrate, fat, and protein oxidation and insulin resistance. *J Clin Invest* 1988; 81: 1137–45.
- 5 Cttensmeyer FP, Beniac DR, Luo RZ. Mechanism of transmembrane signaling: insulin binding and the insulin receptor. *Biochemistry* 2000; 39: 12103–12.
- 6 Shpakov AO, Pertseva MN. Structural and functional characterization of insulin receptor substrate proteins and the molecular mechanisms of their interaction with insulin superfamily tyrosine kinase receptors and effector proteins. *Membr Cell Biol* 2000; 13: 455–84.
- 7 Lam K, Carpenter CL, Ruderman NB, Friel JC, Kelly KL. The phosphatidylinositol 3-kinase serine kinase phosphorylates IRS-1: stimulation by insulin and inhibition by wortmannin. *J Biol Chem* 1994; 269: 20648–52.
- 8 Koren S, Fantus IG. Inhibition of the protein tyrosine phosphatase PTP1B: potential therapy for obesity, insulin resistance and type-2 diabetes mellitus. *Best Pract Res Clin Endocrinol Metab* 2007; 21: 621–40.
- 9 Zhang Y, Li Y, Guo YW, Jiang HL, Shen X. A sesquiterpene quinone, dysidine, from the sponge *Dysidea villosa*, activates the insulin pathway through inhibition of PTPases. *Acta Pharmacol Sin* 2009; 30: 333–45.
- 10 Tonks NK, Diltz CD, Fischer EH. Characterization of the major protein-tyrosine phosphatase of human placenta. *J Biol Chem* 1988; 263: 6722–37.
- 11 Charbonneau H, Tonks NK, Kumar S, Diltz CD, Harrylock M, Cool DE, *et al*. Human placenta protein-tyrosine phosphatase: amino-acid

- sequence and relationship to a family of receptor-like proteins. *Proc Natl Acad Sci USA* 1989; 86: 5252–6.
- 12 Lalli CA, Pauli JR, Prada PO, Cintra DE, Ropelle ER, Velloso LA, *et al*. Statin modulates insulin signaling and insulin resistance in liver and muscle of rats fed a high-fat diet. *Metabolism* 2008; 57: 57–65.
 - 13 Zabolotny JM, Haj FG, Kim YB, Kim HJ, Shulman GI, Kim JK, *et al*. Transgenic overexpression of protein-tyrosine phosphatase 1B in muscle causes insulin resistance, but overexpression with leukocyte antigen related phosphatase does not additively impair insulin action. *J Biol Chem* 2004; 279: 24844–51.
 - 14 Delibegovic M, Bence KK, Mody N, Hong EG, Ko HJ, Kim JK, *et al*. Improved glucose homeostasis in mice with muscle-specific deletion of protein-tyrosine phosphatase 1B. *Mol Cell Biol* 2007; 27: 7727–34.
 - 15 Xu J, Li L, Qian Z, Hong J. Reduction of PTIB by RNAi upregulates the activity of insulin controlled fatty acid synthase promoter. *Biochem Biophys Res Commun* 2005; 329: 538–43
 - 16 de la Monte SM, Wands JR. Chronic gestational exposure to ethanol impairs insulin-stimulated survival and mitochondrial function in cerebellar neurons. *Cell Mol Life Sci* 2002; 59: 882–93.
 - 17 de la Monte SM, Xu J, Wands J. Ethanol inhibits insulin expression and actions in the developing brain. *Cell Mol Life Sci* 2005; 62: 1131–45.
 - 18 Margaret EG, Melissa JM, Gary WC, Kim B, Nicole B, Dennis L, *et al*. Free fatty acid-induced insulin resistance is associated with activation of protein kinase C α and alterations in the insulin signaling cascade. *Diabetes* 1999; 48: 1270–4.
 - 19 Schmittgen TD, Zakrajsek BA, Mills AG, Gorn V, Singer MJ, Reed MW. Quantitative reverse transcription-polymerase chain reaction to study mRNA decay: comparison of endpoint and real-time methods. *Anal Biochem* 2000; 285: 194–204.
 - 20 Livak KJ, Schmittgen TD. Analysis of relative gene expression data using real-time quantitative PCR and the $2^{-\Delta\Delta Ct}$ method. *Methods* 2001; 25: 402–8.
 - 21 Wan Q, Liu Y, Guan Q, Gao L, Lee KO, Zhao JJ. Ethanol feeding impairs insulin-stimulated glucose uptake in isolated rat skeletal muscle: role of Gs α and cAMP. *Alcohol Clin Exp Res* 2005; 29: 1450–6.
 - 22 Onishi M, Honda T, Oqihara T, Sakoda H, Anai M, Fujishiro M. Ethanol feeding induces insulin resistance with enhanced PI3-kinase activation. *Biochem Biophys Res Commun* 2003; 303: 788–94.
 - 23 Welham MJ, Bone H, Levings M, Learmonth L, Wang LM, Leslie KB, *et al*. Insulin receptor substrate-2 is the major 170-kDa protein phosphorylated on tyrosine in response to cytokines in murine lymphohemopoietic cells. *J Biol Chem* 1997; 272: 1377–81.
 - 24 Furuya DT, Binsack R, Machado UF. Low ethanol consumption increases insulin sensitivity in Wistar rats. *Braz J Med Biol Res* 2003; 36: 125–30.
 - 25 Narula J, Haider N, Virmani R, DiSalvo TG, Kolodgie FD, Hajjar RJ. Apoptosis in myocytes in end-stage heart failure. *N Engl J Med* 1996; 335: 1182–9.
 - 26 Green CR, Kobus SM, Ji Y, Bennett BM, Reynolds JN, Brien JF. Chronic prenatal ethanol exposure increases apoptosis in the hippocampus of the term fetal guinea pig. *Neurotoxicol Teratol* 2006; 28: 296–7.
 - 27 Baroni GS, Marucci L, Benedetti A, Mancini R, Jezequel AM, Orlandi F. Chronic ethanol feeding increases apoptosis and cell proliferation in rat liver. *J Hepatol* 1994; 20: 508–13.
 - 28 Wu X, Zhu L, Zilbering A, Mahadev K, Motoshima H, Yao J. Hyperglycemia potentiates H_2O_2 production in adipocytes and enhances insulin signal transduction: potential role for oxidative inhibition of thiol-sensitive protein tyrosine phosphatases. *Antioxid Redox Signal* 2005; 7: 526–37.
 - 29 Sreejayan N, Lin Y, Hassid A. NO attenuate insulin signaling and motility in aortic smooth muscle cells via tyrosine phosphatase1B-mediated mechanism. *Arterioscler Thromb Vasc Biol* 2002; 22: 1086–92.
 - 30 Mahadev K, Zilbering A, Zhu L, Goldstein BJ. Insulin-stimulated hydrogen peroxide reversibly inhibits protein-tyrosine phosphatase 1b *in vivo* and enhances the early insulin action cascade. *J Biol Chem* 2001; 276: 21938–42.