



Caspase-4 and caspase-5, members of the ICE/CED-3 family of cysteine proteases, are CrmA-inhibitable proteases

Shinji Kamada¹, Yoshimitsu Funahashi¹ and Yoshihide Tsujimoto^{1,2}

¹ Department of Medical Genetics, Biomedical Research Center, Osaka University Medical School, 2-2 Yamadaoka, Suita, Osaka 565, Japan

² Corresponding author: Department of Medical Genetics, Biomedical Research Center, Osaka University Medical School, 2-2 Yamadaoka, Suita, Osaka 565, Japan tel: +81-6-879-3360; fax: +81-6-879-3369
e-mail: tsujimot@gene.med.osaka-u.ac.jp

Received 12.2.97; revised 19.3.97; accepted 10.4.97

Edited by Y. Kuchino

Abstract

Proteases of the caspase family are implicated in mammalian apoptosis and constitute a protease cascade. We characterized caspase-4 (TX/ICH-2/ICE_{reII}) and caspase-5 (ICE_{reIII}/TY), which are most closely related to caspase-1 (ICE) among the caspase family. Although overexpression of caspase-4 and caspase-5 induced apoptosis, confirming previous observations, this apoptosis was not inhibited by a caspase-1-specific tetrapeptide inhibitor (Ac-YVAD-CHO), suggesting that caspase-4 and caspase-5 have different substrate specificities from caspase-1 and also that caspase-4- and caspase-5-induced apoptosis is not mediated by caspase-1. CrmA, a cowpox virus-derived caspase-1 inhibitor that prevents apoptosis induced by various stimuli, was cleaved by caspase-4 and caspase-5, and inhibited their proteolytic activity as assessed by cleavage of pro-caspase-3 (pro-CPP32/Yama/apopain). Thus, caspase-4 and caspase-5 are CrmA-inhibitable proteases like caspase-1 and might be involved in apoptosis.

Keywords: Apoptosis; cysteine protease; caspase-4; caspase-5; CrmA; baculovirus p35

Abbreviations: ICE, interleukin-1 β -converting enzyme; TNF, tumour necrosis factor; PAGE, polyacrylamide gel electrophoresis

Introduction

Apoptosis, or programmed cell death, is a fundamental process crucial to morphogenesis and the maintenance of homeostasis in both vertebrates and invertebrates. Genetic studies in the nematode *Caenorhabditis elegans* have led to the isolation of genes, including *ced-3*, *ced-4* and *ced-9*, that are involved in programmed cell death (Yuan and Horvitz,

1990; Hengartner *et al*, 1992). *ced-3* and *ced-4* are required for such cell death to occur. *ced-3* encodes a protein that is similar to interleukin-1 β (IL-1 β)-converting enzyme (ICE), a cysteine protease that cleaves the inactive 31 kDa precursor of IL-1 β to generate the active cytokine (Thornberry *et al*, 1992; Yuan *et al*, 1993). Ten proteins homologous to ICE (caspase-1) have been identified in mammals and are classified into three subfamilies, caspase-1-, caspase-3 (CPP32/Yama/apopain)-, and caspase-2 (NEDD2/ICH-1)-like proteases, based on their structures (Alnemri *et al*, 1996). The caspase-1-like subfamily includes caspase-1 (Thornberry *et al*, 1992), caspase-4 (TX/ICH-2/ICE_{reII}) (Faucheu *et al*, 1995; Kamens *et al*, 1995; Munday *et al*, 1995), and caspase-5 (ICE_{reIII}/TY) (Munday *et al*, 1995; Faucheu *et al*, 1996). The caspases have been suggested to constitute a protease cascade (Martin and Green, 1995; Enari *et al*, 1996; Shimizu *et al*, 1996). Among the caspase family, caspase-1(-like) and caspase-3(-like) proteases have been implicated in physiological cell death, based upon the inhibition of cell death by tetrapeptide inhibitors of caspase-1 and caspase-3 (Los *et al*, 1995; Milligan *et al*, 1995; Nicholson *et al*, 1995; Enari *et al*, 1996; Chen *et al*, 1996; Jacobson *et al*, 1996; Schlegel *et al*, 1996; Hasegawa *et al*, 1996; Dubrez *et al*, 1996). Studies of a shorter isoform of *caspase-2* have also revealed its involvement in cell death (Wang *et al*, 1994). However, roles of other members of this family in cell death remain to be elucidated. Since apoptosis induced by a variety of stimuli is inhibited by baculovirus p35 (Clem *et al*, 1991; Rabizadeh *et al*, 1993; Hay *et al*, 1994; Sugimoto *et al*, 1994; Beidler *et al*, 1995), which inhibits the activities of caspases (Xue and Horvitz, 1995; Bump *et al*, 1995), and by a cowpox virus-derived caspase-1 inhibitor, CrmA (Pickup *et al*, 1986; Ray *et al*, 1992; Gagliardini *et al*, 1994; Tewari and Dixit, 1995; Los *et al*, 1995; Enari *et al*, 1995; Tewari *et al*, 1995b; Smith *et al*, 1996; Li *et al*, 1996), it would be interesting to identify CrmA-inhibitable members of the caspase family.

In the present study, we characterized caspase-4 and caspase-5, which are most closely related to caspase-1 among the caspase family, and showed that these two proteases have similar substrate preferences and are both CrmA-inhibitable.

Results

Caspase-4- and caspase-5-induced apoptosis is not inhibited by Ac-YVAD-CHO

Among the caspase family, caspase-4 and caspase-5 are most closely related to caspase-1 (53% identity for caspase-4 and 51% identity for caspase-5). To study the apoptosis-inducing activity of caspase-4 and caspase-5, we employed the same transient expression system as that previously used for *caspase-1* (Miura *et al*, 1993). We fused human *caspase-4*

and *caspase-5* cDNAs in frame with the *E. coli lacZ* gene and placed the fused gene under the control of the chicken β -actin promoter in *pcas-4-lacZ* and *pcas-5-lacZ*, respectively. We also used constructs of the fusion gene of the *caspase-1* and *caspase-2_L* cDNAs with the *lacZ* gene, *pcas-1-lacZ* and *p β actH37Z* (Wang *et al*, 1994), respectively. The fusion genes were transfected into Rat-1 cells and their expression was examined with the X-Gal reaction. Most blue Rat-1 cells (X-Gal-positive) transfected with the *lacZ* gene alone were flat and well attached to the plates (data not shown). In contrast, most blue cells transfected with *pcas-4-lacZ* and *pcas-5-lacZ* contained round or small membrane-bound fragments representing apoptotic bodies, similar to those in cells transfected with *pcas-1-lacZ* and *p β actH37Z*. These results indicate that overexpression of caspase-4 and caspase-5 proteins induces Rat-1 cells to undergo apoptosis, confirming previous observations (Faucheu *et al*, 1995; Kamens *et al*, 1995; Munday *et al*, 1995). The tetrapeptide caspase-1 inhibitor Ac-YVAD-CHO (Thornberry *et al*, 1992) effectively blocked caspase-1-induced apoptosis in a concentration-dependent manner, whereas caspase-4-, caspase-5- and caspase-2_L-induced apoptosis was not significantly inhibited (Figure 1). These findings suggest that caspase-4 and caspase-5 have different substrate specificities from caspase-1 and also that caspase-4-, caspase-5-, and caspase-2_L-induced apoptosis are not mediated by caspase-1.

Caspase-4 and caspase-5 show similar substrate preferences in the *in vitro* cleavage assay

We compared the substrate preferences of caspase-4 and caspase-5 with cowpox virus CrmA, baculovirus p35, and pro-

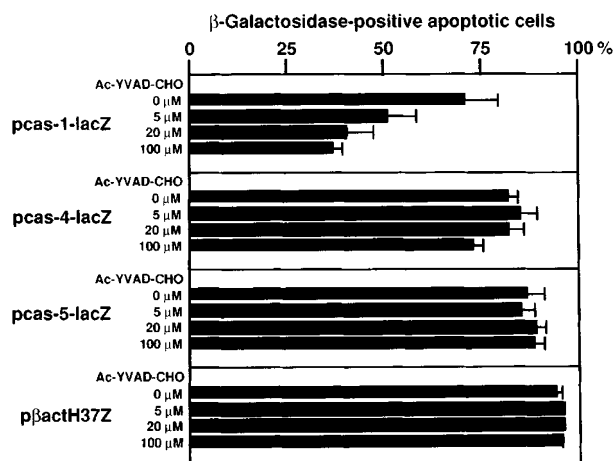


Figure 1 Effect of Ac-YVAD-CHO on caspase-1-, caspase-4-, caspase-5-, and caspase-2_L-induced apoptosis. One day after plating Rat-1 cells at a density of 2×10^5 in each well of 6-well dishes, 1.0μ g of the indicated DNA constructs was transfected. *p β actH37Z* is the caspase-2_L-expressing construct (Wang *et al*, 1994). The cells were incubated for 3 hr in serum-free medium containing DNA and lipofectamine, washed with serum-free medium, cultured in medium containing 10% FBS and the indicated concentrations of inhibitor (Ac-YVAD-CHO) for an additional 20 h and stained with X-Gal. The percentages (mean \pm S.D.) of morphologically apoptotic cells among all β -galactosidase-positive blue cells are shown. More than 500 blue cells were counted in three independent experiments.

caspase-3 as potential substrates using recombinant proteases and *in vitro* translated ³⁵S-labeled substrates. The results are summarized in Table 1. Caspase-4 and caspase-5

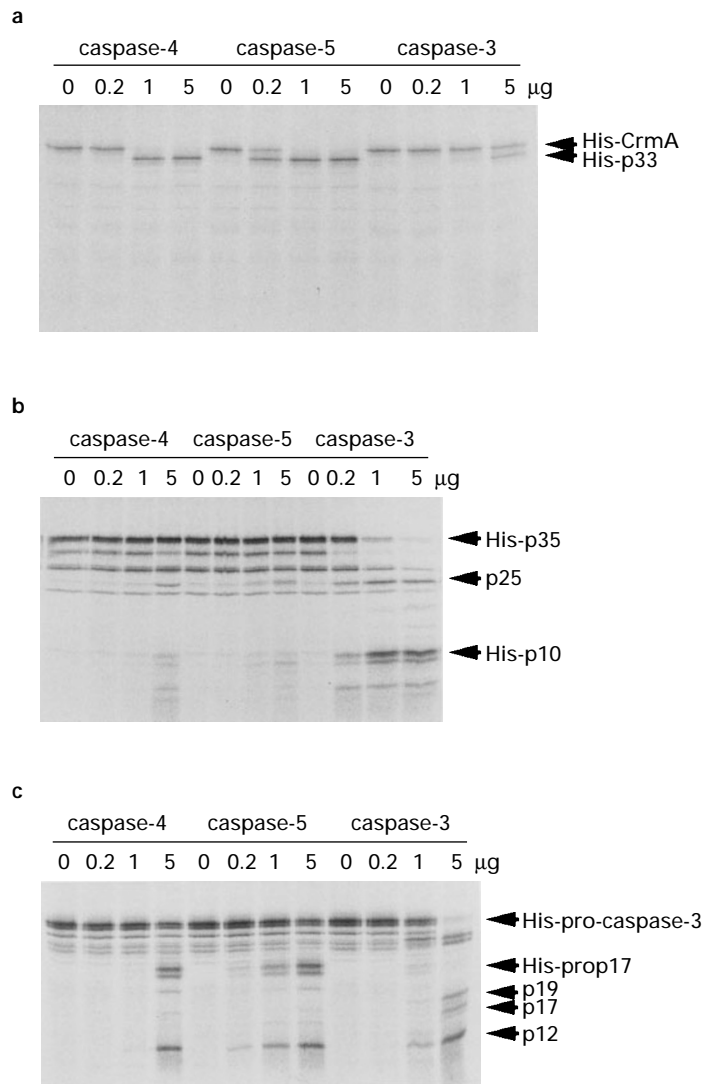


Figure 2 Substrate preferences of recombinant caspase-4 and caspase-5. (A) Cleavage of CrmA by recombinant caspase-4, caspase-5, and caspase-3. ³⁵S-labeled CrmA protein was incubated with the indicated amounts of purified caspase-4, caspase-5, or caspase-3 for 3.5 h and reaction products were analyzed by 15% SDS-PAGE. The His-p33 band corresponds to the His-tagged amino-terminal cleavage product resulting from cleavage at Asp-304. The 5 kDa carboxy-terminal cleavage product was not seen because it contains no methionine residues. (B) Cleavage of baculovirus p35 by caspase-4, caspase-5, and caspase-3. ³⁵S-labeled p35 protein was incubated with purified caspase-4, caspase-5, or caspase-3 and the reaction products were analyzed as described in (A). The p25 band corresponds to the carboxy-terminal cleavage product resulting from cleavage at Asp-87. The His-p10 bands correspond to the His-tagged amino-terminal cleavage product. (C) Cleavage of pro-caspase-3 by caspase-4, caspase-5, and caspase-3. ³⁵S-labeled mutant pro-caspase-3 protein was incubated with purified caspase-4, caspase-5, or caspase-3 and the reaction products were analyzed as described in (A). The p17 and p12 bands correspond to two subunits of active caspase-3. The His-prop17 bands may be the His-tagged prodomain with the p17 subunit resulting from cleavage at Asp-175. The p19 band may be the amino-terminal cleavage product resulting from cleavage at Asp-9 and Asp-175.

proteases showed a preference for CrmA rather than p35 as a substrate, whereas caspase-3 effectively cleaved p35 and only poorly cleaved CrmA (Figure 2a and b). As shown in Figure 2c, purified recombinant caspase-3 cleaved pro-caspase-3 bearing active site mutations at both p17 and p12 (subunits of the active enzyme) to generate p12 and p17, confirming previous observations (Wang *et al*, 1996; Xue *et al*, 1996). Purified recombinant caspase-4 and caspase-5 also cleaved pro-caspase-3 to generate p12 and pro-p17 (Figure 2c). The *in vitro* cleavage of CrmA, baculovirus p35, and mutant pro-caspase-3 by caspase-4, caspase-5, and caspase-3 was dependent on the concentration of the respective protease. Lysates of bacteria expressing the respective proteases cleaved the substrates, but not lysates of bacteria with a control vector (data not shown), indicating that cleavage was not due to contaminating bacterial proteases. These data show that caspase-4 and caspase-5 have a similar substrate preference for CrmA and p35.

CrmA inhibits cleavage of pro-caspase-3 by caspase-4 and caspase-5

Detection of the cleavage of CrmA by caspase-4 and caspase-5 led us to examine whether CrmA directly inhibits the proteolytic activities of caspase-4 and caspase-5 using the *in vitro* cleavage assay. As shown in Figure 3, CrmA effectively inhibited the cleavage of pro-caspase-3 by recombinant caspase-4 and caspase-5, indicating that caspase-4 and caspase-5 are CrmA-inhibitable proteases.

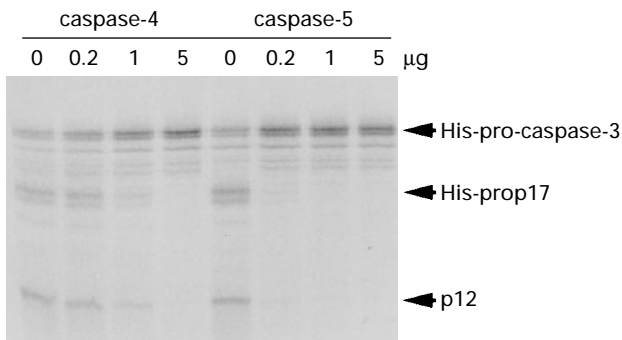


Figure 3 CrmA-mediated inhibition of the cleavage of pro-caspase-3 by caspase-4 and caspase-5. ³⁵S-labeled mutant pro-caspase-3 protein was incubated with 5 µg of purified caspase-4 and caspase-5 and the indicated amounts of purified CrmA for 3.5 h after which the reaction products were analyzed by 15% SDS-PAGE.

Table 1 Substrate preferences of caspase-3, caspase-4, and caspase-5

| Protease | Substrate |
|-----------|------------------------|
| caspase-4 | CrmA>pro-caspase-3>p35 |
| caspase-5 | CrmA>pro-caspase-3>p35 |
| caspase-3 | p35>pro-caspase-3>CrmA |

Substrate preference was assessed by the extent of cleavage of three substrates with the respective protease at fixed concentrations. Data from Figure 2 are summarized here.

Caspase-4- and caspase-5-induced apoptosis is inhibited by CrmA

To further confirm the inhibitory effect of CrmA on caspase-4 and caspase-5 *in vivo*, Rat-1 cells were cotransfected with *lacZ* fusion plasmids (*pcas-1-lacZ*, *pcas-4-lacZ*, *pcas-5-lacZ*, and *pβactH37Z*) together with a *crmA* expression construct (*pCAG-crmA*). As shown in Figure 4, apoptosis induced by overexpression of caspase-4 and caspase-5 was inhibited by CrmA as effectively as caspase-1-induced apoptosis. In contrast, caspase-2_L-induced apoptosis was not affected by CrmA, confirming the previous observation (Wang *et al*, 1994).

Discussion

The implication of caspase-1 in physiological cell death is based upon the prevention of apoptosis by inhibitors of the protease, including a tetrapeptide caspase-1 inhibitor Ac-YVAD-CHO (Los *et al*, 1995; Milligan *et al*, 1995; Enari *et al*, 1996; Chen *et al*, 1996), that was prepared based on the cleavage site in proIL-1β (Thornberry *et al*, 1992). However, it has not previously been determined whether Ac-YVAD-CHO only inhibits caspase-1. We showed that apoptosis induced by caspase-4 and caspase-5, which are most closely related to caspase-1, was not inhibited by Ac-YVAD-CHO, a finding consistent with the previous observation that caspase-4 and caspase-5 could not cleave proIL-1β (Faucheu *et al*, 1995, 1996; Munday *et al*, 1995). Although the *K_i* of caspase-1 inhibition by Ac-YVAD-CHO is <1 nM, caspase-1-induced apoptosis is only partially inhibited by 100 µM inhibitor. This is probably due to poor cell permeability of the tetrapeptide inhibitor. Thus, the available data suggest that Ac-YVAD-CHO is a quite specific inhibitor of caspase-1 itself.

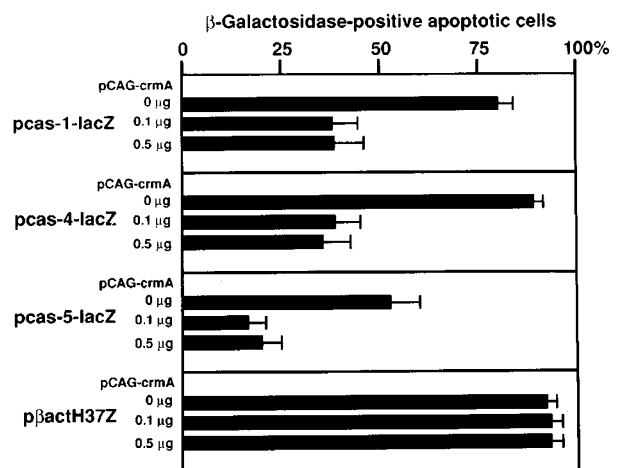


Figure 4 Effects of CrmA on caspase-1-, caspase-4-, caspase-5- and caspase-2_L-induced apoptosis. One day after plating Rat-1 cells at a density of 2×10^5 in each well of 6-well dishes, 0.1 µg of the indicated plasmids and various amount of pCAG-crmA or pUC-CAGGS were transfected in a total of 1.0 µg of DNA. The cells were incubated for 3 h in serum-free medium containing DNA and lipofectamine. Then a threefold volume of medium containing 10% FBS was added without removing the transfection mixture, and incubation was done for 22 h followed by staining with X-Gal. The data (mean ± S.D.) were analyzed as described in the legend to Figure 1.

Xue *et al.* (1996) suggested that caspases could be categorized by their ability to cleave CrmA and p35 after studying CED-3, caspase-3, caspase-1, and caspase-2; CED-3 and caspase-3 effectively cleave pro-caspase-3 and baculovirus p35 but not CrmA, caspase-1 effectively cleaves CrmA, and caspase-2 weakly cleaves only baculovirus p35. The preference of caspase-4 and caspase-5 for CrmA rather than baculovirus p35 as a substrate (Figure 2 and Table 1) suggests that these proteases are functionally related to caspase-1, consistent with the findings on structural analysis.

The cowpox virus gene product CrmA is a potent inhibitor of caspase-1 (Ray *et al.*, 1992) and has also been shown to inhibit the induction of apoptosis by various stimuli. CrmA efficiently inhibits granzyme B, but only inhibits caspase-3 and caspase-7 (Mch3/ICE-LAP3/CMH-1) at high concentrations (Quan *et al.*, 1995; Fernandes-Alnemri *et al.*, 1995). Here, we have shown that CrmA efficiently inhibits caspase-4 and caspase-5. It was recently reported that a Fas-associated caspase family protease, caspase-8 (MACH/FLICE/Mch5) (Boldin *et al.*, 1996; Muzio *et al.*, 1996; Fernandes-Alnemri *et al.*, 1996), is a CrmA-inhibitable protease (Srinivasula *et al.*, 1996). This suggests that caspase-8 is the critical target of CrmA when inhibiting Fas- and TNF-induced apoptosis, because caspase-8 appears to be a protease that is furthest upstream in the caspase cascade. It is not known whether caspase-8 is generally involved in apoptosis. However, since caspase-4 and caspase-5 are also CrmA-inhibitable protease, they may be involved in CrmA-inhibitable physiological apoptosis triggered by a variety of stimuli.

The caspase cascade is implicated in the apoptotic cell death pathway (Enari *et al.*, 1996; Shimizu *et al.*, 1996). In Fas-mediated apoptosis, caspase-1(-like) proteases seem to act downstream of caspase-8 and/or Mch-4 (caspase-10) (Srinivasula *et al.*, 1996) and upstream of caspase-3(-like) protease (Enari *et al.*, 1996). We have recently shown that a caspase-4(-like) protease is involved in Fas-mediated apoptosis, probably by transducing a death signal directly to caspase-3(-like) proteases (Kamada *et al.*, 1997). Since caspase-4 and caspase-5 cleave pro-caspase-3 to release p12 but not p17, both of which are components of active caspase-3, the generation of p17 might be mediated by other members of caspase family. Alternatively, the release of p12 might lead to auto-activation of caspase-3. *In vitro* cleavage of pro-caspase-3 by caspase-5 suggests that caspase-5 as well as caspase-1 and caspase-4 might be involved in physiological apoptotic cell death by activating caspase-3(-like) proteases. Thus, multiple protease cascade pathways might exist to activate caspase-3(-like) proteases, one of the executioner protease

Materials and Methods

Cell culture

Rat-1 cells were grown in Dulbecco's modified Eagle's medium (DMEM) supplemented with 10% fetal bovine serum (FBS). Transfection was performed using Lipofectamine (Life Technologies) according to the manufacturer's instructions. For analysis of β -

galactosidase expression, cells were rinsed once with phosphate-buffered saline (PBS), fixed with 1% glutaraldehyde for 5 min, rinsed twice with PBS, and stained in X-Gal buffer (0.5 mg/ml 5-bromo-4-chloro-3-indoxyl β -galactoside, 3 mM $K_3Fe(CN)_6$, 3 mM $K_4Fe(CN)_6 \cdot 3H_2O$, 1 mM $MgCl_2$, 10 mM KCl, 0.1% Triton X-100 in 0.1 M sodium phosphate buffer [pH 7.5]) (Miura *et al.*, 1993) at 37°C for 3 h.

Construction of plasmids

To construct expression plasmids, PCR was carried out using the cDNAs of *caspase-1*, *caspase-4*, and *caspase-5* as templates. The following PCR primers were used: for human *caspase-1*, C1-5 (5'-CGGTGCAGCCATGGCCGACAAGGTCCTG-3') and C1-3 (5'-CGGGTACCCAATGTCCTGGGAAGAGGTAGAA-3'); and for human *caspase-4*, C4-5 (5'-CGGTGCACCCCTATGGCAGAAGGCAACCAC-3') and C4-3 (5'-CGGGTACCCAATTGCCAGGAAAGAGGTAGAA-3'); and for human *caspase-5*, C5-5 (5'-CGGGTACCAGCTATGTTCAAAGTA-3') and C5-3 (5'-CGGGTACCCAATTGCCAGGAAAGAG-3'). The C1-5 and C4-5 primers had a *Sall* at the 5' end, while the C1-3, C4-3, C5-5, and C5-3 primers had a *KpnI* site at their 5' end. The amplified human *caspase-1* and *caspase-4* fragments and the *caspase-5* fragment were respectively cloned into *Sall-KpnI* sites and the *KpnI* site of *pact β Gal*, which possesses the chicken β -actin promoter (Maekawa *et al.*, 1991) to generate *pcas-1-lacZ*, *pcas-4-lacZ* and *pcas-5-lacZ*, respectively. In these constructs, the sequences coding for the proteases were joined in-frame to the amino terminal of β -galactosidase. The same fragments were also cloned into *Sall-KpnI* sites and the *KpnI* site of *pBluescript SK(-)* (Stratagene) and sequenced.

The *crmA* gene was isolated as a 1.4 kb *EcoRI* fragment by digestion of plasmid p996 (Pickup *et al.*, 1986) and was inserted into the *EcoRI* site of the pUC-CAGGS vector (Niwa *et al.*, 1991), generating pCAG-*crmA*.

Purification of recombinant His₆-tagged proteases

DNA sequences encoding the 105–377th amino acid residue of caspase-4, 122–418th amino acid residue of caspase-5 and 29–277th amino acid residue of caspase-3 were amplified by PCR and subcloned into the *E. coli* expression vector pRSET A (Invitrogen), in which the protease sequences were placed under the control of the T7 promoter and joined in-frame to sequences encoding an N-terminal fusion peptide, which includes an ATG translation initiation codon and the sequence for six successive histidine residues that function as a metal-binding domain in the translated proteins. The resultant plasmids (pHiscas4, pHiscas5 and pHiscas3) were transformed into *E. coli* strain JM109. Induction of recombinant His₆-tagged proteases was achieved according to the manufacturer's instructions. Cells were harvested and recombinant proteases were purified essentially as described elsewhere (Lippke *et al.*, 1996). Fractions showing proteolytic activity in an *in vitro* cleavage assay (described below) were pooled and dialyzed against buffer A (50 mM HEPES, 0.1 M NaCl, 10% (v/v) glycerol, pH 7.5) to remove excess imidazole and were stored at –80°C. The purity of the proteins thus obtained was greater than 80% for His-caspase-4 or His-caspase-5, and approximately 20% for His-caspase-3, as estimated by Coomassie blue staining.

Purification of His₆-tagged CrmA protein

crmA DNA containing the entire coding region was amplified by PCR using the p996 plasmid (Pickup *et al.*, 1986) as a template and two primers, HisCrm5 (5'-CGCTCGAGGAATGGATATCTTCAGG) and

HisCrm3 (5'-CGGAATCTTAATTAGTTGTTGG), encompassing the initiation and termination codons of CrmA, respectively. HisCrm5 had an *Xho*I site at the 5' end and HisCrm3 had an *Eco*RI site. The amplified fragment was subcloned into the *Xho*I-*Eco*RI sites of pRSET C to generate pHiscrma. Expression of His₆-tagged CrmA was achieved according to the manufacturer's instructions. Cells were lysed by sonication in a buffer containing 20 mM sodium phosphate (pH 7.8) and 0.5 M NaCl, after which the lysates were cleared by centrifugation. Then the supernatants containing soluble His-CrmA were loaded onto a 1 ml nickel-NTA column (Qiagen) and washed extensively with 20 mM sodium phosphate (pH 6.0) and 0.5 M NaCl. His-CrmA protein was eluted with 100–200 mM imidazole in 20 mM sodium phosphate (pH 7.8) and 0.5 M NaCl, and was found to elute at approximately 200 mM imidazole. It was dialyzed against buffer A to remove excess imidazole and stored at –80°C. The protein thus obtained showed greater than 90% purity by Coomassie blue staining.

In vitro cleavage assay

To construct an expression plasmid for His₆-tagged baculovirus p35, the 1 kb *Nde*I *p35* fragment containing entire coding region was blunt-ended and inserted into the *Pvu*II site of pRSET A, generating pHisp35. To substitute Cys 163 for Ser and Arg 207 for Glu in *caspase-3*, a PCR-based method was used. The final PCR product was cloned into the *Eco*RI site of pBluescript SK (–) and sequenced. The same fragment encoding caspase-3 containing active site mutations at both p17 and p12 subunits was subcloned into pRSET A to generate pHiscas3^{mut}. ³⁵S-methionine-labeled His₆-tagged CrmA, p35 and mutant pro-caspase-3 were prepared for *in vitro* cleavage assays using expression constructs (pHiscrma, pHisp35, and pHiscas3^{mut}) and a TNT T7 coupled *in vitro* transcription and translation system (Promega) according to the manufacturer's instructions. ³⁵S-methionine-labeled proteins were purified essentially as described elsewhere (Tewari et al, 1995a) and stored at –80°C until use. Recombinant caspase-4, caspase-5, and caspase-3 with or without His-CrmA were preincubated in 20 μl of buffer A supplemented with 20 μM dithiothreitol at room temperature for 15 min. Reactions were initiated by addition of 20 μl of ³⁵S-methionine-labeled proteins and incubation was done at 37°C for 3.5 h. The reactions were stopped by the addition of SDS–PAGE sample buffer and cleaved products were analyzed by 15% SDS–PAGE.

Acknowledgements

This work was supported in part by grants for COE Research, for Scientific Research on Priority Areas and for Scientific Research from the Ministry of Education, Science and Culture of Japan. We wish to thank Dr Jun-ichi Miyazaki for providing the pUC-CAGGS vector plasmid, Dr Junying Yuan for the p β Gal vector plasmid and p β actH37Z plasmid, Dr Vishva M Dixit for the pcDNA3/Yama plasmid, and Dr David J Pickup for the p996 plasmid containing the *crmA* gene.

References

Alnemri ES, Livingston DJ, Nicholson DW, Salvesen G, Thornberry NA, Wong WW and Yuan J (1996) Human ICE/CED-3 protease nomenclature. *Cell* 87: 171
Beidler DR, Tewari M, Friesen PD, Poirier G and Dixit VM (1995) The baculovirus p35 protein inhibits Fas- and tumor necrosis factor-induced apoptosis. *J. Biol. Chem.* 270: 16527–16528

Boldin MP, Goncharov TM, Goltsev YV and Wallach D (1996) Involvement of MACH, a novel MORT1/FADD-interacting protease, in Fas/APO-1- and TNF receptor-induced cell death. *Cell* 85: 803–815
Bump NJ, Hackett M, Hugunin M, Seshagiri S, Brady K, Chen P, Ferenz C, Franklin S, Ghayur T, Li P, Licari P, Mankovich J, Shi L, Greenberg AH, Miller LK and Wong WW (1995) Inhibition of ICE family proteases by baculovirus antiapoptotic protein p35. *Science* 269: 1885–1888
Chen Y, Smith MR, Thirumalai K and Zychlinsky A (1996) A bacterial invasin induces macrophage apoptosis by binding directly to ICE. *EMBO J.* 15: 3853–3860
Clem RJ, Fechheimer M and Miller LK (1991) Prevention of apoptosis by a baculovirus gene during infection of insect cells. *Science* 254: 1388–1390
Dubrez L, Savoy I, Hamman A and Solary E (1996) Pivotal role of a DEVD-sensitive step in etoposide-induced and Fas-mediated apoptotic pathways. *EMBO J.* 15: 5504–5512
Enari M, Hug H and Nagata S (1995) Involvement of an ICE-like protease in Fas-mediated apoptosis. *Nature* 375: 78–81
Enari M, Talianian RV, Wong WW and Nagata S (1996) Sequential activation of ICE-like and CPP32-like proteases during Fas-mediated apoptosis. *Nature* 380: 723–726
Faucheu C, Blanchet A-M, Collard-Dutilleul V, Gu Y, Lalanne J-L and Diu-Hercend A (1996) Identification of a cysteine protease closely related to interleukin-1 β -converting enzyme. *Eur. J. Biochem.* 236: 207–213
Faucheu C, Diu A, Chen AWE, Blanchet A-M, Miossec C, Herve F, Collard-Dutilleul V, Gu Y, Aldape RA, Lippke JA, Rocher C, Su MS-S, Livingston DJ, Hercend T and Lalanne J-L (1995) A novel human protease similar to the interleukin-1 β converting enzyme induces apoptosis in transfected cells. *EMBO J.* 14: 1914–1922
Fernandes-Alnemri T, Armstrong RC, Krebs J, Srinivasula SM, Wang L, Bullrich F, Fritz LC, Trapani JA, Tomaselli KJ, Litwack G and Alnemri ES (1996) *In vitro* activation of CPP32 and Mch3 by Mch4, a novel human apoptotic cysteine protease containing two FADD-like domains. *Proc. Natl. Acad. Sci. USA.* 93: 7464–7469
Fernandes-Alnemri T, Takahashi A, Armstrong R, Krebs J, Fritz L, Tomaselli KJ, Wang L, Yu Z, Croce CM, Salvesen G, Earnshaw WC, Litwack G and Alnemri ES (1995) *Mch3*, a novel human apoptotic cysteine protease highly related to CPP32. *Cancer Res.* 55: 6045–6052
Gagliardini V, Fernandez P-A, Lee RKK, Drexler HCA, Rotello R, Fishman M and Yuan J (1994) Prevention of vertebrate neuronal death by the *crmA* gene. *Science* 263: 826–828
Hasegawa J, Kamada S, Kamiike W, Shimizu S, Imazu T, Matsuda H and Tsujimoto Y (1996) Involvement of CPP32/Yama(-like) proteases in Fas-mediated apoptosis. *Cancer Res.* 56: 1713–1718
Hay BA, Wolff T and Rubin GM (1994) Expression of baculovirus p35 prevents cell death in *Drosophila*. *Development* 120: 2121–2129
Hengartner MO, Ellis RE and Horvitz HR (1992) *Caenorhabditis elegans* gene *ced-9* protects cells from programmed cell death. *Nature* 356: 494–499
Jacobson M, Weil M and Raff MC (1996) Role of Ced-3/ICE-family proteases in staurosporine-induced programmed cell death. *J. Cell Biol.* 133: 1041–1051
Kamada S, Washida M, Hasegawa J-I, Kusano H, Funahashi Y and Tsujimoto Y (1997) Involvement of caspase-4(-like) protease in Fas-mediated apoptotic pathway. *Oncogene*, in press
Kamens J, Paskind M, Hugunin M, Talianian RV, Allen H, Banach D, Bump N, Hackett M, Johnston CG, Li P, Mankovich JA, Terranova M and Ghayur T (1995) Identification and characterization of ICH-2, a novel member of the interleukin-1 β -converting enzyme family of cysteine proteases. *J. Biol. Chem.* 270: 15250–15256
Li W, Fishman MC and Yuan J (1996) Prevention of apoptosis in CNTF-dependent neurons by a mutant ICE and by viral protein CrmA but not by proto-oncogene product Bcl-2. *Cell Death Differ.* 3: 105–112
Lippke JA, Gu Y, Sarnacki C, Caron PR and Su MS-S (1996) Identification and characterization of CPP32/Mch2 homolog 1, a novel cysteine protease similar to CPP32. *J. Biol. Chem.* 271: 1825–1828
Los M, Van de Craen M, Penning LC, Shenk H, Westendorp M, Baeuerle PA, Droge W., Krammer PH, Fiers W and Schulze-Osthoff K (1995) Requirement of an ICE/CED-3 protease for Fas/APO-1-mediated apoptosis. *Nature* 375: 81–83
Maekawa T, Matsuda S, Fujisawa J, Yoshida M and Ishii S (1991) Cyclic AMP response element-binding protein, CRE-BP1, mediates the E1A-induced but not the Tax-induced *trans*-activation. *Oncogene* 6: 627–632

- Martin SJ and Green DR (1995) Protease activation during apoptosis: death by a thousand cuts? *Cell* 82: 349–352
- Milligan CE, Prevette D, Yaginuma H, Homma S, Cardwell C, Fritz LC, Tomaselli KJ, Oppenheim RW and Schwartz LM (1995) Peptide inhibitors of the ICE protease family arrest programmed cell death of motoneurons in vivo and in vitro. *Neuron* 15: 385–393
- Miura M, Zhu H, Rotello R, Hartwig EA and Yuan J (1993). Induction of apoptosis in fibroblasts by IL-1 β -converting enzyme, a mammalian homolog of the *C. elegans* cell death gene *ced-3*. *Cell* 75: 653–660
- Munday NA, Vaillancourt JP, Ali A, Casano FJ, Miller DK, Molineaux SM, Yamin T-T, Yu VL and Nicholson DW (1995) Molecular cloning and pro-apoptotic activity of ICE_{reIII} and ICE_{reIII}, members of the ICE/CED-3 family of cysteine proteases. *J. Biol. Chem.* 270: 5870–5876
- Muzio M, Chinnaiyan AM, Kischkel FC, O'Rourke K, Shevchenko A, Ni J, Scaffidi C, Bretz JD, Zhang M, Gentz R, Mann M, Krammer PH, Peter ME and Dixit VM (1996) FLICE, a novel FADD-homologous ICE/CED-3-like protease, is required to the CD95 (Fas/APO-1) death-inducing signaling complex. *Cell* 85: 817–827
- Nicholson DW, Ali A, Thornberry NA, Vaillancourt JP, Ding CK, Gallant M, Gareau Y, Griffin PR, Labelle M, Lazebnik YA, Mungay NA, Raju SM, Smulson ME, Yamin T-T, Yu YL and Miller DK (1995) Identification and inhibition of the ICE/CED-3 protease necessary for mammalian apoptosis. *Nature* 378: 37–43
- Niwa H, Yamamura K and Miyazaki J (1991) Efficient selection for high-expression transfectants with a novel eukaryotic vector. *Gene* 108: 193–200
- Pickup DJ, Ink BS, Hu W, Ray CA and Koklik WK (1986) Hemorrhage in lesions caused by cowpox virus is induced by a viral protein that is related to plasma protein inhibitors of serine proteases. *Proc. Natl. Acad. Sci. USA* 83: 7698–7701
- Quan LT, Caputo A, Bleackley RC, Pickup DJ and Salvesen GS (1995) Granzyme B is inhibited by the cowpox virus serpin cytokine response modifier A. *J. Biol. Chem.* 270: 10377–10379
- Rabizadeh S, LaCount DL, Friesen PD and Bredesen DE (1993) Expression of the baculovirus p35 gene inhibits mammalian neuronal cell death. *J. Neurochem.* 61: 2318–2321
- Ray CA, Black RA, Kronheim SR, Greenstreet TA, Sleath PR, Salvesen GS and Pickup DJ (1992) Viral inhibition of inflammation, cowpox virus encodes an inhibitor of the interleukin-1 β converting enzyme. *Cell* 69: 597–604
- Schlegel J, Peters I, Orrenius S, Miller DK, Thornberry NA, Yamin T-T and Nicholson DW (1996) CPP32/apopain is a key interleukin 1 β converting enzyme-like protease involved in Fas-mediated apoptosis. *J. Biol. Chem.* 271: 1841–1844
- Shimizu S, Eguchi Y, Kamiike W, Matsuda H and Tsujimoto Y (1996) Bcl-2 expression prevents activation of the ICE protease cascade. *Oncogene* 12: 2251–2257
- Smith KGC, Strasser A and Vaux DL (1996) CrmA expression in T lymphocytes of transgenic mICE inhibits CD95(Fas/APO-1)-transduced apoptosis, but does not cause lymphadenopathy or autoimmune disease. *EMBO J.* 15: 5167–5176
- Srinivasula SM, Ahmad M, Fernandes-Alnemri T, Litwack G and Alnemri ES (1996) Molecular ordering of the Fas-apoptotic pathway: the Fas/APO-1 protease Mch5 is a CrmA-inhibitable protease that activates multiple Ced-3/ICE-like cysteine proteases. *Proc. Natl. Acad. Sci. USA.* 93: 14486–14491
- Sugimoto A, Friesen PD and Rothman JH (1994) Baculovirus p35 prevents developmentally programmed cell death and rescues a *ced-9* mutant in the nematode *Caenorhabditis elegans*. *EMBO J.* 13: 2023–2028
- Tewari M and Dixit VM (1995) Fas- and tumor necrosis factor-induced apoptosis is inhibited by the poxvirus *crmA* gene product. *J. Biol. Chem.* 270: 3255–3260
- Tewari M, Quan LT, O'Rourke K, Desnoyers S, Zeng Z, Beidler DR, Poirier GG, Salvesen GS and Dixit VM (1995a) Yama/CPP32 β , a mammalian homolog of CED-3, is a CrmA-inhibitable protease that cleaves the death substrate poly(ADP-ribose) polymerase. *Cell* 81: 801–809
- Tewari M, Telford WG, Miller RA and Dixit VM (1995b) CrmA, a poxvirus-encoded serpin, inhibits cytotoxic T-lymphocyte-mediated apoptosis. *J. Biol. Chem.* 270: 22705–22708
- Thornberry NA, Bull HG, Calaycay JR, Chapman KT, Howard AD, Kostura MJ, Miller DK, Molineaux SM, Weigner JR, Aunins J, Elliston KO, Ayala JM, Casano FJ, Chin J, Ding GJ-F, Egger LA, Gaffney EP, Limjuco G, Palyha OC, Raju SM, Rolando AM, Salley JP, Yamin T-T, Lee TD, Shively JE, MacCross M, Mumford RA, Schmidt JA and Tocci MJ (1992) A novel heterodimeric cysteine protease is required for interleukin-1 β processing in monocytes. *Nature* 356: 768–774
- Wang L, Miura M, Bergeron L, Zhu H and Yuan J (1994) *Ich-1*, an ICE/*ced-3*-related gene, encodes both positive and negative regulators of programmed cell death. *Cell* 78: 739–750
- Wang X, Zelenski NG, Yang J, Sakai J, Brown MS and Golstein JL (1996) Cleavage of sterol regulatory element binding proteins (SREBPs) by CPP32 during apoptosis. *EMBO J.* 15: 1012–1020
- Xue D and Horvitz HR (1995) Inhibition of the *Caenorhabditis elegans* cell-death protease CED-3 by a CED-3 cleavage site in baculovirus p35 protein. *Nature* 377: 248–251
- Xue D, Shaham S and Horvitz HR (1996) The *Caenorhabditis elegans* cell-death protein CED-3 is a cysteine protease with substrate specificities similar to those of the human CPP32 protease. *Genes Dev.* 10: 1073–1083
- Yuan J and Horvitz HR (1990) Genetic mosaic analysis of *ced-3* and *ced-4*, two genes that control programmed cell death in nematode *C. elegans*. *Dev. Biol.* 138: 33–41
- Yuan J, Shaham S, Ledoux S, Ellis HM and Horvitz HR (1993) The *C. elegans* cell death gene *ced-3* encodes a protein similar to mammalian interleukin-1 β -converting enzyme. *Cell* 75: 641–652