

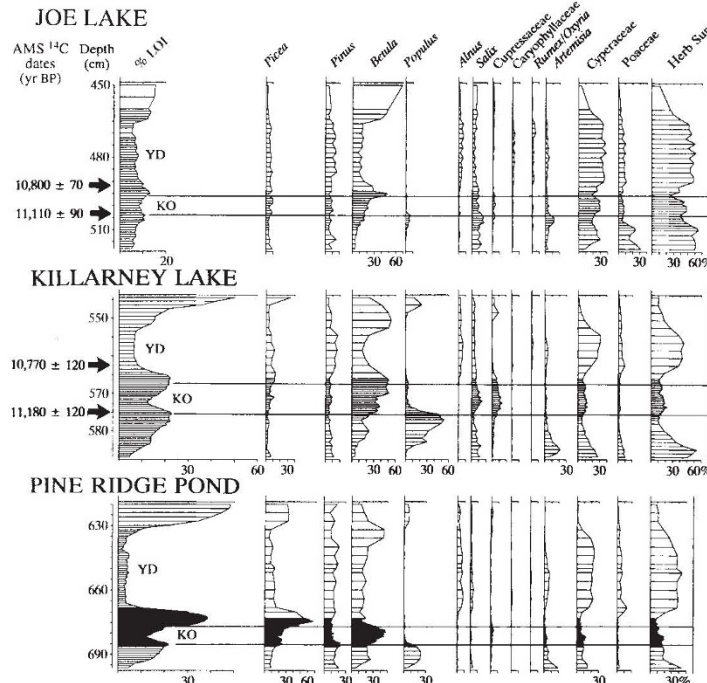
Neurological symptoms could arise from defects in *XP/ERCC/CS* genes in at least two ways. Unrepaired DNA damage might be particularly deleterious to critical gene expression in nervous tissue and lead to progressive neurological deterioration²⁴. Alternatively, developmental abnormalities might arise if an *ERCC/XP/CS* gene product functioned in both DNA repair and gene expression. This may indeed be the case for *ERCC3/XPBC/CS-C* (refs 25, 26).

Two XP groups remain for which genes have not been assigned (XP-E and XP-F), and any relationship between these and the set of ultraviolet-sensitive rodent complementation groups could be investigated by a similar approach. In this way a more complete picture can be drawn of the activities and genes involved in nucleotide excision repair which will facilitate mechanistic dissection of the process. □

Received 30 December 1992; accepted 8 March 1993.

- Keijzer, W. *et al. Mutat. Res.* **62**, 183-190 (1979).
- Arlott, C. F. *et al. Carcinogenesis* **1**, 745-751 (1980).
- Ichihashi, M., Fujiwara, Y., Uehara, Y. & Matsumoto, A. *J. Invest. Dermat.* **85**, 284-287 (1985).
- Norris, P. G., Hawk, J. L. M., Avery, J. A. & Giannelli, F. *Brit. J. Dermat.* **116**, 861-866 (1987).
- Vermuelen, W., Ossseweijer, P., de Jonge, A. J. R. & Hoeljmackers, J. H. J. *Mutation Res.* **165**, 199-206 (1986).
- Yamazumi, M., Sugano, T., Asahina, H., Okada, Y. & Uchida, T. *Proc. natn. Acad. Sci. U.S.A.* **83**, 1476-1479 (1986).
- Wood, R. D., Robins, P. & Lindahl, T. *Cell* **53**, 97-106 (1988).
- Hansson, J., Grossman, L., Lindahl, T. & Wood, R. D. *Nucleic Acids Res.* **18**, 35-40 (1990).
- Biggerstaff, M. & Wood, R. D. *J. Biol. Chem.* **267**, 6879-6885 (1992).
- Busch, D. *et al. Mutagenesis* **4**, 349-354 (1989).
- Riboni, R., Botta, E., Stefanini, M., Numata, M. & Yasui, A. *Cancer Res.* **52**, 6690-6691 (1992).
- Flejtner, W. L., McDaniel, L. D., Johns, D., Friedberg, E. C. & Schultz, R. A. *Proc. natn. Acad. Sci. U.S.A.* **89**, 261-265 (1992).
- Weeda, G. *et al. Cell* **62**, 777-791 (1990).
- Mudgett, J. S. & MacInnes, M. A. *Genomics* **8**, 623-633 (1990).
- Barbis, D. P., Schultz, R. A. & Friedberg, E. C. *Mutation Res.* **165**, 175-184 (1986).
- Klein, B., Pastink, A., Odiijk, H., Westerveld, A. & van der Eb, A. J. *Exp. Cell Res.* **191**, 256-262 (1990).
- Scherly, D. *et al. Nature* **363**, 182-185 (1993).
- Thompson, L. H. *et al. Somat. Cell molec. Genet.* **13**, 539-551 (1987).
- Warburton, D., Yu, M.-T., Richardson, C., Mudgett, J. S. & MacInnes, M. A. *Cytogenet. Cell Genet.* **58**, 1984 (1991).
- Takahashi, E., Shiomi, N. & Shiomi, T. *Jpn J. Cancer Res.* **83**, 1117-1119 (1992).
- Troelstra, C. *et al. Cell* **71**, 939-953 (1992).
- Robbins, J. H. *Hum. Genet.* **88**, 242 (1991).
- Jaeken, J. *et al. Hum. Genet.* **83**, 339-346 (1989).
- Andrews, A. D., Barrett, S. F. & Robbins, J. H. *Proc. natn. Acad. Sci. U.S.A.* **75**, 1984-1988 (1978).
- Gulyas, K. & Donahue, T. *Cell* **69**, 1031-1042 (1992).
- Mounkes, L. C., Jones, R. S., Liang, B.-C., Gelbart, W. & Fuller, M. T. *Cell* **71**, 925-937 (1992).
- Robins, P., Jones, C. J., Biggerstaff, M., Lindahl, T. & Wood, R. D. *EMBO J* **10**, 3913-3921 (1991).
- Wood, R. & Burki, H. J. *Mutation Res.* **95**, 505-514 (1992).

ACKNOWLEDGEMENTS. We thank J. Cole for blood samples; our colleagues who supplied cell lines from their collections; the ICRF Cell Production Unit for assistance; members of our laboratory for reagents and for discussion; and S. Clarkson, D. Scherly and their colleagues for discussion, advice and for antibodies.



CORRECTION

Flightless bird from the Cretaceous of Mongolia

Perle Altangerel, Mark A. Norell, Luis M. Chiappe & James M. Clark

Nature 362, 623-628 (1993)

It has been brought to our attention by Ben Creisler that the genus name *Mononychus* used to refer to a new flightless Cretaceous bird in our letter to *Nature* is preoccupied by the coleopteran *Mononychus* Schueppel 1824 (ref. 1). We therefore propose the replacement *Mononykus* for this genus whose type species is *Mononykus olecranus*.

1. Schueppel, J. F. in *Insectorum species novae aut minus cognitae, descriptionibus illustratae* Vol. 1 *Coleoptera* (ed. Germar, E. F.) (Halle, 1824).

ERRATUM

A previously unrecognized late-glacial cold event in eastern North America

André J. Levesque, Francis E. Mayle, Ian R. Walker & Les C. Wynar

Nature 361, 623-626 (1993)

IN the printed version of Fig. 2 in this letter, several of the ¹⁴C dates shown by arrows were omitted. The correct version is shown below, together with the legend.

FIG. 2 Pollen percentage diagrams from six sites in Maritime Canada. The thick continuous horizontal lines indicate the boundaries of the KO based on the LOI curves, as discussed in the text. YD, Younger Dryas. Each horizontal line of the LOI and pollen curves represents one sample.

