

CORRIGENDUM

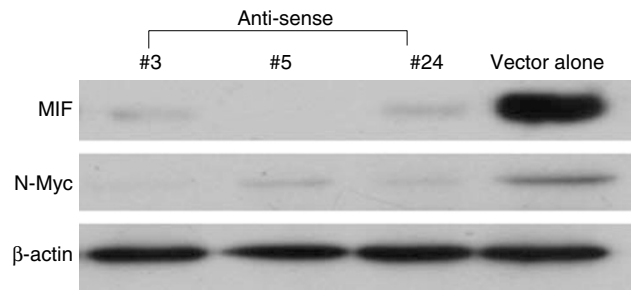
Inhibition of tumor growth and metastasis *in vitro* and *in vivo* by targeting macrophage migration inhibitory factor in human neuroblastomas

Y Ren, HM Chan, Y Xie, YX Chen, W Li, GP Jiang, Q Liu, A Meinhardt and PKH Tam

Oncogene (2006) 25, 7224. doi:10.1038/sj.onc.1210005**Correction to:***Oncogene* (2006) 25, 3501–3508. doi:10.1038/sj.onc.1209395; published online 30 January 2006

Part of Figure 1 of this paper was previously published as Figure 2a of the following paper: Fan J, Chen Y, Chan HM, Tam PKH and Ren Y. (2005). Removing intensity effects and identifying significant genes for Affymetrix arrays in macrophage migration inhibitory factor-suppressed neuroblastoma cells. *Proc Natl Acad Sci USA* 102: 17751–17756.

The authors would like to apologize for not citing this originally.



Copyright (2005) National Academy of Sciences, USA

ERRATUM

Antileukemic roles of human phospholipid scramblase 1 gene, evidence from inducible PLSCR1-expressing leukemic cells

Y Huang, Q Zhao, C-X Zhou, Z-M Gu, D Li, H-Z Xu, T Wiedmer, PJ Sims, K-W Zhao and G-Q Chen

Oncogene (2006) 25, 7224. doi:10.1038/sj.onc.1210082**Correction to:** *Oncogene* (2006) 25: 6618–6627. doi:10.1038/sj.onc.1209677

Due to a typesetting error, on page 6618 Dr T Wiedmer's name was omitted from the list of authors.

Dr Wiedmer is affiliated with the Department of Molecular and Experimental Medicine, The Scripps Research Institute, La Jolla, CA, USA.